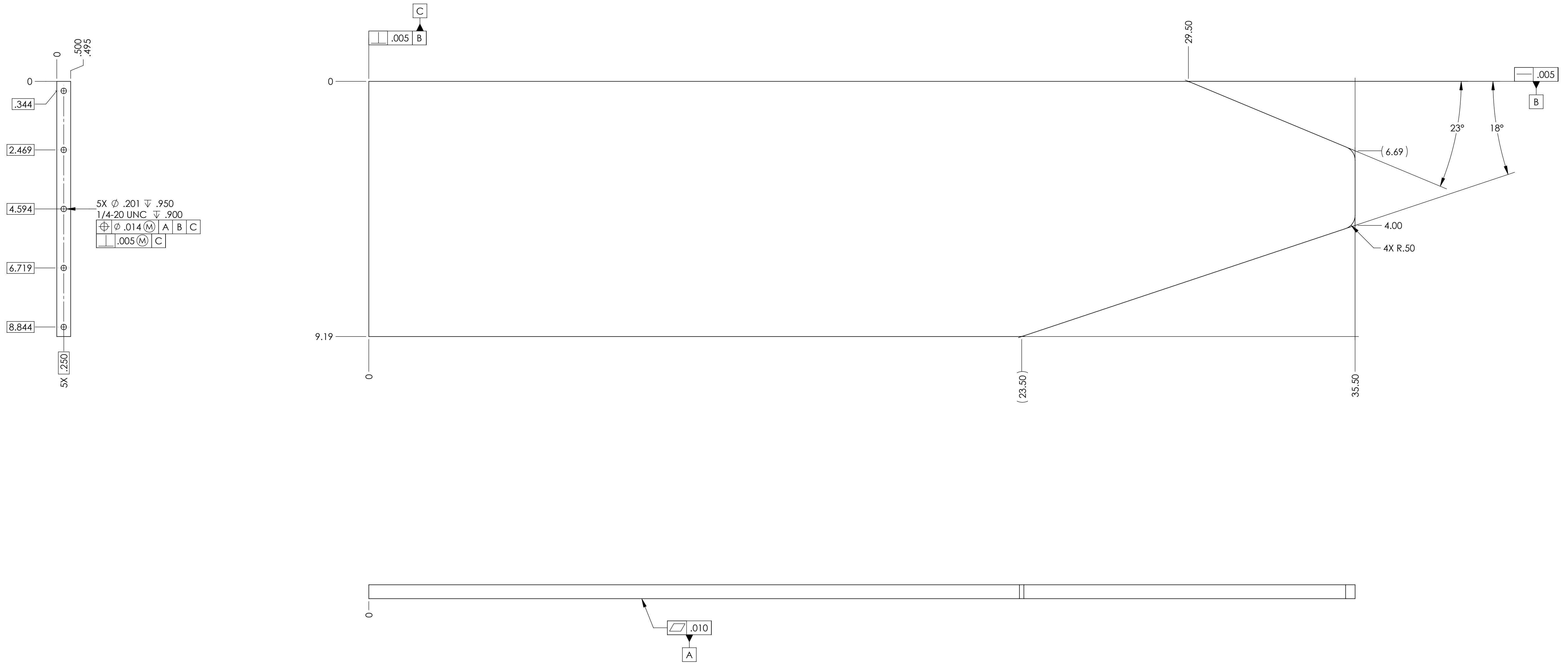


- NOTES CONTINUED:**
5. SCRIBE, ENGRAVE (A VIBRATORY TOOL MAY BE USED), LASER MARK OR MECHANICALLY STAMP (NO INKS OR DYES) DRAWING PART NUMBER, REVISION (AND VARIANT OR "TYPE" IF APPLICABLE) ON NOTED SURFACE OF PART FOLLOWED ON THE NEXT LINE WITH A THREE DIGIT SERIAL NUMBER. SERIAL NUMBERS START AT 001 FOR THE FIRST ARTICLE AND PROCEED CONSECUTIVELY. USE MINIMUM 0.12" HIGH CHARACTERS, UNLESS THE SIZE OF THE PART DICTATES SMALLER CHARACTERS. EXAMPLE: DXXXXXX-VY, TYPE-XX, S/N XXX
  6. APPROXIMATE WEIGHT = 14.86 LB. ("BLANK")
  7. MACHINE ALL SURFACES TO REMOVE OXIDES AND MILL FINISH. USE OF ABRASIVE REMOVAL TECHNIQUES IS NOT ALLOWED. REFER TO LIGO-E0900364
  8. ALL PARTS SHALL BE MANUFACTURED IN ACCORDANCE WITH LIGO SPECIFICATION E0900364.
  9. ALL MATERIAL IS TO BE VIRGIN MATERIAL (i.e. NO WELD REPAIRS, PLUGS OR RECYCLED MATERIAL); NO REPAIRS SHALL BE MADE UNLESS APPROVED IN ADVANCE, AND IN WRITING, BY LIGO LABORATORY. REFER TO LIGO-E0900364.

| TYPE | DESCRIPTION |
|------|-------------|
| -01  | X-arm       |
| -02  | Y-arm       |

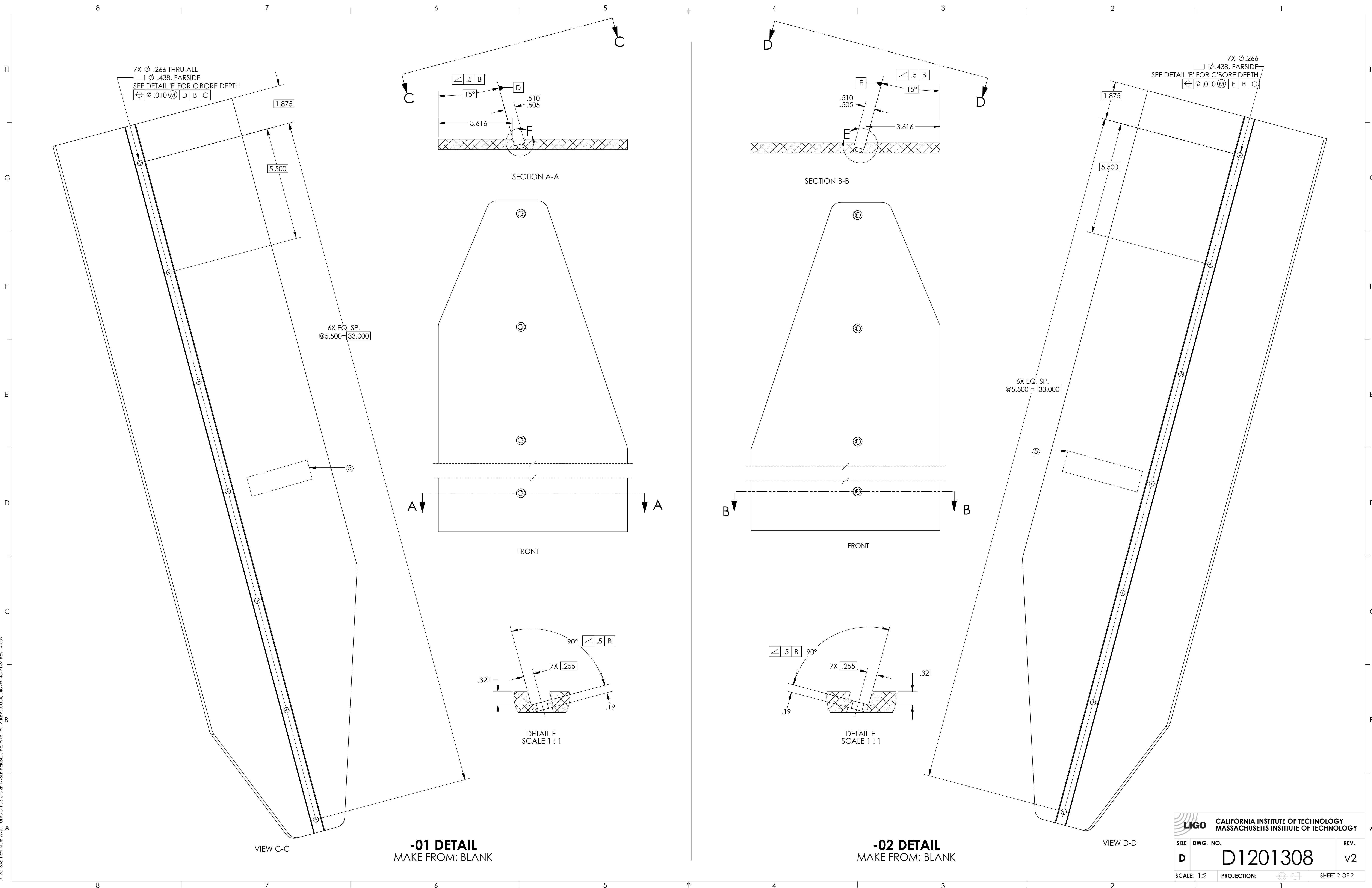
| REV. | DATE        | DCN #       | DRAWING TREE # |
|------|-------------|-------------|----------------|
| v1   | 05 NOV 2012 | E1200891-x0 | E1201007-v2    |
| v2   | 23 SEP 2013 | E1300729-x0 | E1201007-v3    |
| -    | -           | -           | -              |



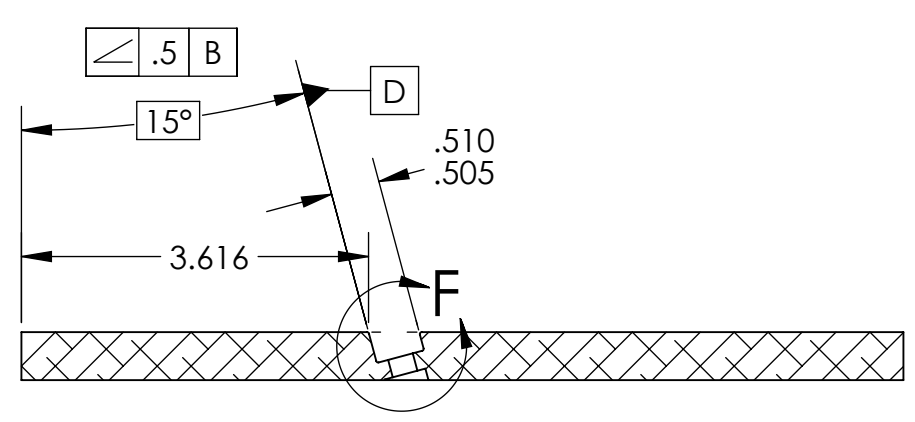
**BLANK DETAIL**  
(SEE SHEET 2 FOR FINISHED TYPE DETAIL)

|   |  |  |  |   |  |  |  |                            |  |                                |  |                            |  |                    |  |                             |  |                   |  |
|---|--|--|--|---|--|--|--|----------------------------|--|--------------------------------|--|----------------------------|--|--------------------|--|-----------------------------|--|-------------------|--|
| DIMENSIONS ARE IN INCHES                                  |  | <b>NOTES AND TOLERANCES: (UNLESS OTHERWISE SPECIFIED)</b><br>1. INTERPRET DRAWING PER ASME Y14.5-1994.<br>2. REMOVE ALL SHARP EDGES, .005-.015, FOR MACHINED PARTS. ROUND ALL EDGES APPROXIMATELY R.02.<br>3. DO NOT SCALE FROM DRAWING.<br>4. ALL MACHINING FLUIDS MUST BE FULLY SYNTHETIC, FULLY WATER SOLUBLE AND FREE OF SULFUR, SILICONE, AND CHLORINE. |  | CALIFORNIA INSTITUTE OF TECHNOLOGY<br>MASSACHUSETTS INSTITUTE OF TECHNOLOGY |  | <b>PART NAME</b><br>LEFT SIDE WALL, aLIGO TCS CO2P TABLE PERISCOPE |  |                            |  |                                |  |                            |  |                    |  |                             |  |                   |  |
| TOLERANCES:<br>.XX ± .01<br>.XXX ± .005<br>ANGULAR ± 1.0° |  | <b>MATERIAL</b><br>6061 Alloy  |  | <b>FINISH</b><br>63 μinch   |  | <b>SYSTEM</b><br>ADVANCED LIGO                                     |  | <b>SUB-SYSTEM</b><br>AOS   |  | <b>DESIGNER</b><br>M. JACOBSON |  | <b>DATE</b><br>21-AUG-2012 |  | <b>SIZE</b><br>D   |  | <b>DWG. NO.</b><br>D1201308 |  | <b>REV.</b><br>v2 |  |
|   |  |  |  | <b>NEXT ASSY</b><br>D1200953  |  | <b>CHECKER</b><br>M. JACOBSON                                      |  | <b>DATE</b><br>05 NOV 2012 |  | <b>APPROVAL</b>                |  | <b>SCALE:</b> 1:2          |  | <b>PROJECTION:</b> |  | SHEET 1 OF 2                |  |                   |  |

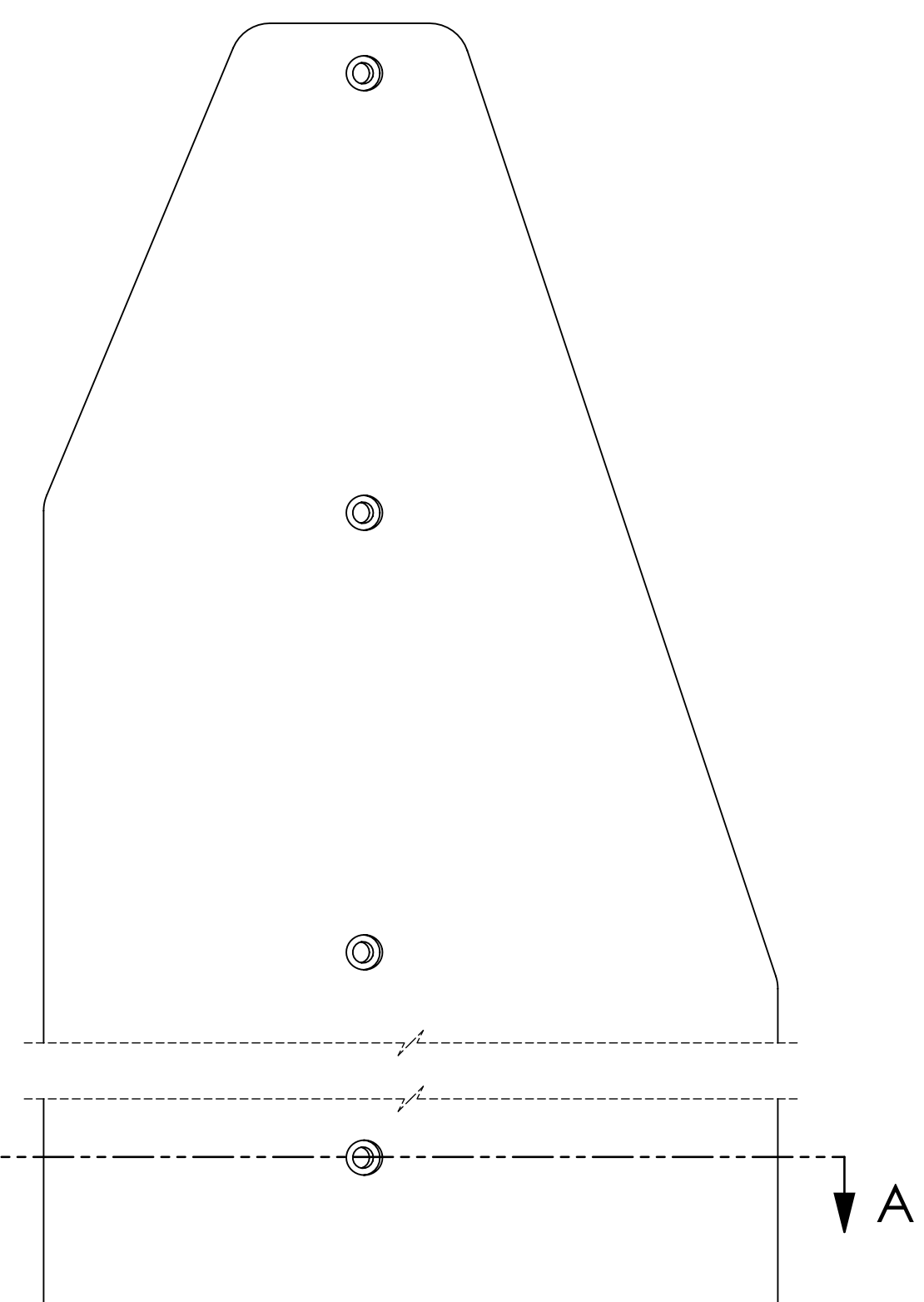
D1201308\_LEFT SIDE WALL.dwg TCS CO2P TABLE PERISCOPE PART PDM REV: X-004 DRAWING PDM REV: X-009



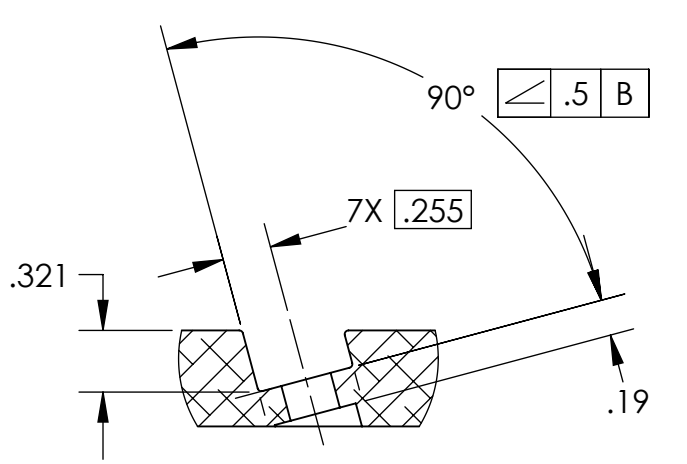
7X  $\phi$  .266 THRU ALL  
 $\square$   $\phi$  .438, FAR SIDE  
 SEE DETAIL 'F' FOR C'BORE DEPTH  
 $\oplus$   $\phi$  .010 (M) D B C



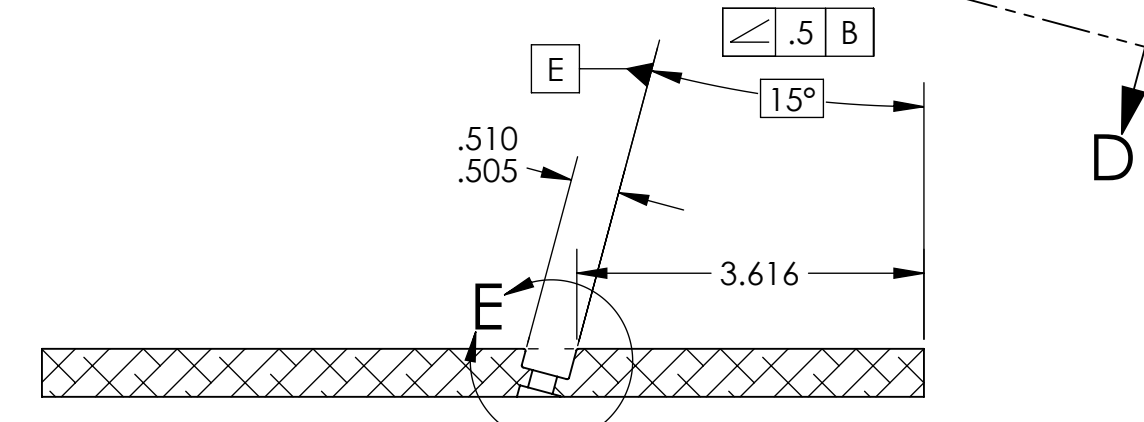
SECTION A-A



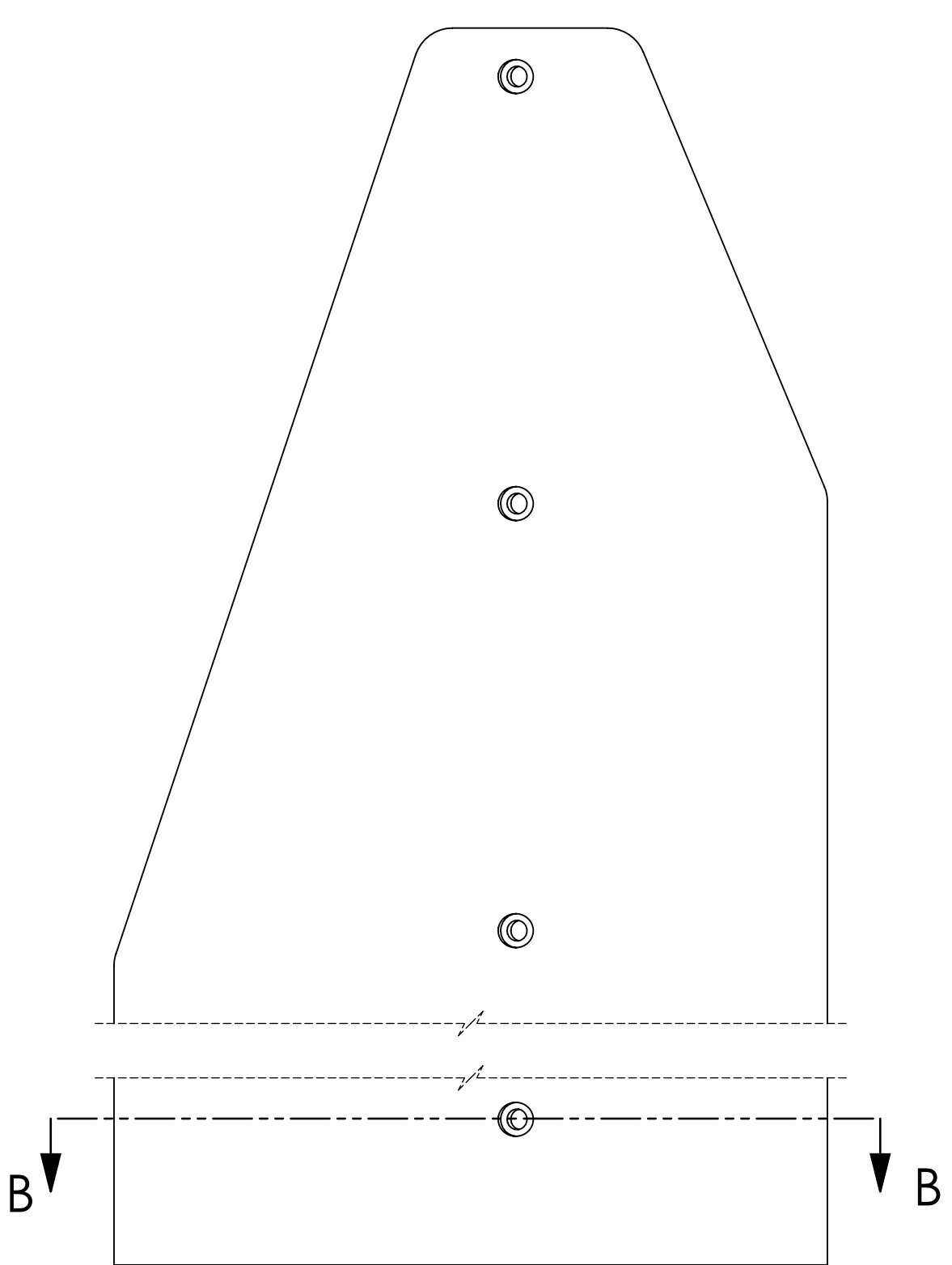
FRONT



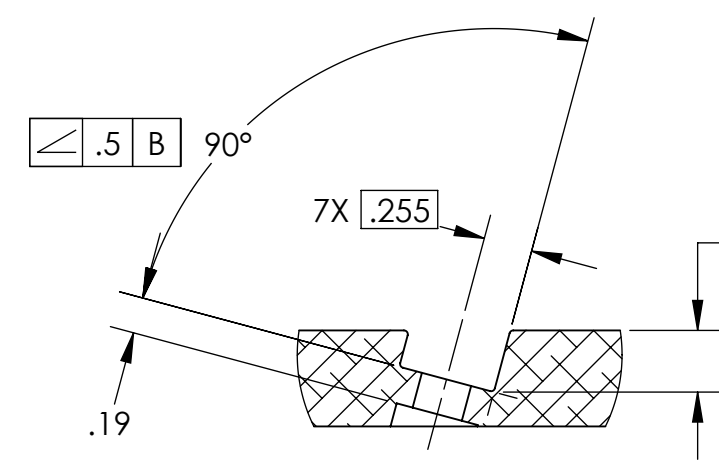
DETAIL F  
 SCALE 1 : 1



SECTION B-B



FRONT



DETAIL E  
 SCALE 1 : 1

7X  $\phi$  .266  
 $\square$   $\phi$  .438, FAR SIDE  
 SEE DETAIL 'E' FOR C'BORE DEPTH  
 $\oplus$   $\phi$  .010 (M) E B C

6X EQ. SP.  
 @ 5.500 = 33.000

6X EQ. SP.  
 @ 5.500 = 33.000

VIEW C-C

**-01 DETAIL**  
 MAKE FROM: BLANK

VIEW D-D

**-02 DETAIL**  
 MAKE FROM: BLANK

|   |              |
|---|--------------|
| CALIFORNIA INSTITUTE OF TECHNOLOGY<br>MASSACHUSETTS INSTITUTE OF TECHNOLOGY |              |
| SIZE DWG. NO.   | REV.         |
| D D1201308  | v2           |
| SCALE: 1:2  | SHEET 2 OF 2 |

D:\201308\_LEFT SIDE WALL.dwg\TCS COPT TABLE FERROCODE.PART PDM.REV.X-004.DRAWING PDM.REV.X-009