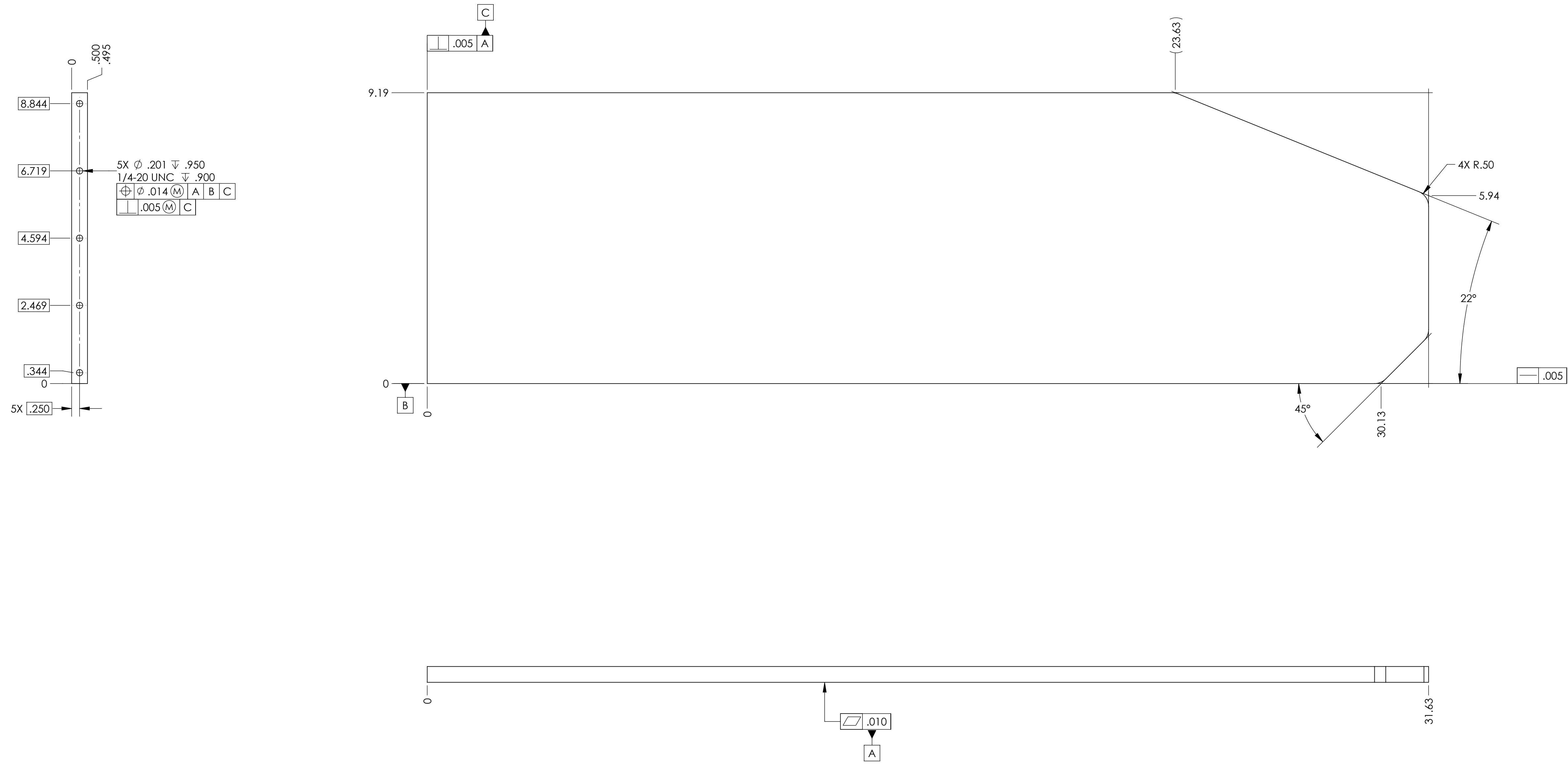


- NOTES CONTINUED:**
5. SCRIBE, ENGRAVE (A VIBRATORY TOOL MAY BE USED), LASER MARK OR MECHANICALLY STAMP (NO INKS OR DYES) DRAWING PART NUMBER, REVISION (AND VARIANT OR "TYPE" IF APPLICABLE) ON NOTED SURFACE OF PART FOLLOWED ON THE NEXT LINE WITH A THREE DIGIT SERIAL NUMBER. SERIAL NUMBERS START AT 001 FOR THE FIRST ARTICLE AND PROCEED CONSECUTIVELY. USE MINIMUM 0.12" HIGH CHARACTERS, UNLESS THE SIZE OF THE PART DICTATES SMALLER CHARACTERS. EXAMPLE: DXXXXXX-VY, TYPE-XX, S/N XXX
 6. APPROXIMATE WEIGHT = 13.47 LB. ('BLANK')
 7. MACHINE ALL SURFACES TO REMOVE OXIDES AND MILL FINISH. USE OF ABRASIVE REMOVAL TECHNIQUES IS NOT ALLOWED. REFER TO LIGO-E0900364
 8. ALL PARTS SHALL BE MANUFACTURED IN ACCORDANCE WITH LIGO SPECIFICATION E0900364.
 9. ALL MATERIAL IS TO BE VIRGIN MATERIAL (i.e. NO WELD REPAIRS, PLUGS OR RECYCLED MATERIAL). NO REPAIRS SHALL BE MADE UNLESS APPROVED IN ADVANCE, AND IN WRITING, BY LIGO LABORATORY. REFER TO LIGO-E0900364.

REV.	DATE	DCN #	DRAWING TREE #
v1	05 NOV 2012	E1200891-x0	E1201007
-	-	-	-
-	-	-	-

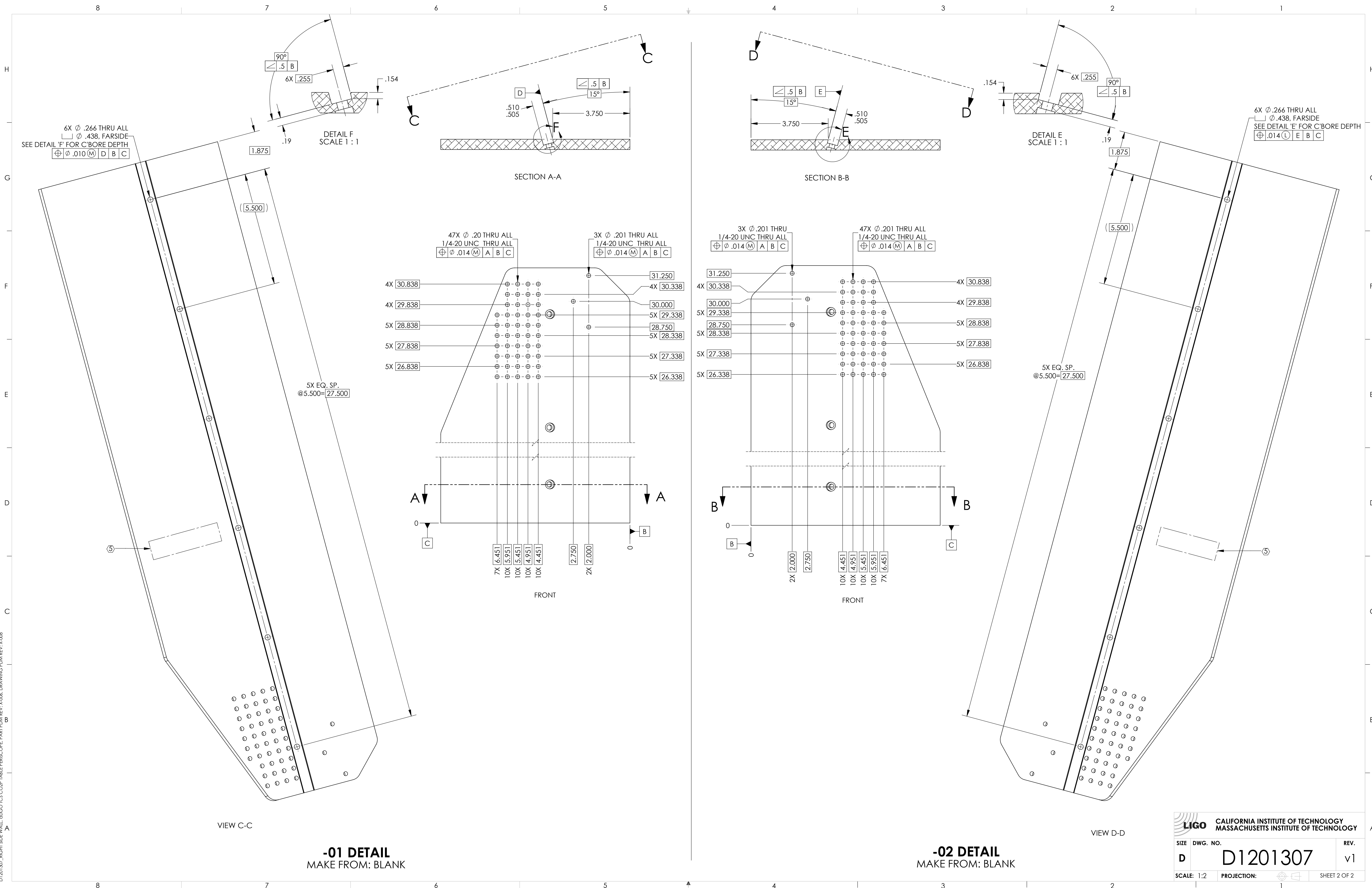
TYPE	DESCRIPTION
-01	X-arm
-02	Y-arm



BLANK DETAIL
(SEE SHEET 2 FOR FINISHED TYPE DETAIL)

DIMENSIONS ARE IN INCHES		NOTES AND TOLERANCES: (UNLESS OTHERWISE SPECIFIED)		CALIFORNIA INSTITUTE OF TECHNOLOGY MASSACHUSETTS INSTITUTE OF TECHNOLOGY		PART NAME			
TOLERANCES: .XX ± .01 .XXX ± .005		1. INTERPRET DRAWING PER ASME Y14.5-1994. 2. REMOVE ALL SHARP EDGES, .005-.015, FOR MACHINED PARTS. ROUND ALL EDGES APPROXIMATELY R.02. 3. DO NOT SCALE FROM DRAWING. 4. ALL MACHINING FLUIDS MUST BE FULLY SYNTHETIC, FULLY WATER SOLUBLE AND FREE OF SULFUR, SILICONE, AND CHLORINE.		SYSTEM ADVANCED LIGO		SUB-SYSTEM AOS		SIDE WALL, αLIGO TCS CO2P TABLE PERISCOPE	
ANGULAR ± 1.0°		MATERIAL	FINISH	NEXT ASSY	DESIGNER	CHECKER	APPROVAL	SIZE DWG. NO. D 1201307	REV.
		6061 Alloy	63 μinch	D1200953	M. JACOBSON	M. JACOBSON		v1	
					21-AUG-2012	05 NOV 2012			
					SCALE: 1:2	PROJECTION:	SHEET 1 OF 2		

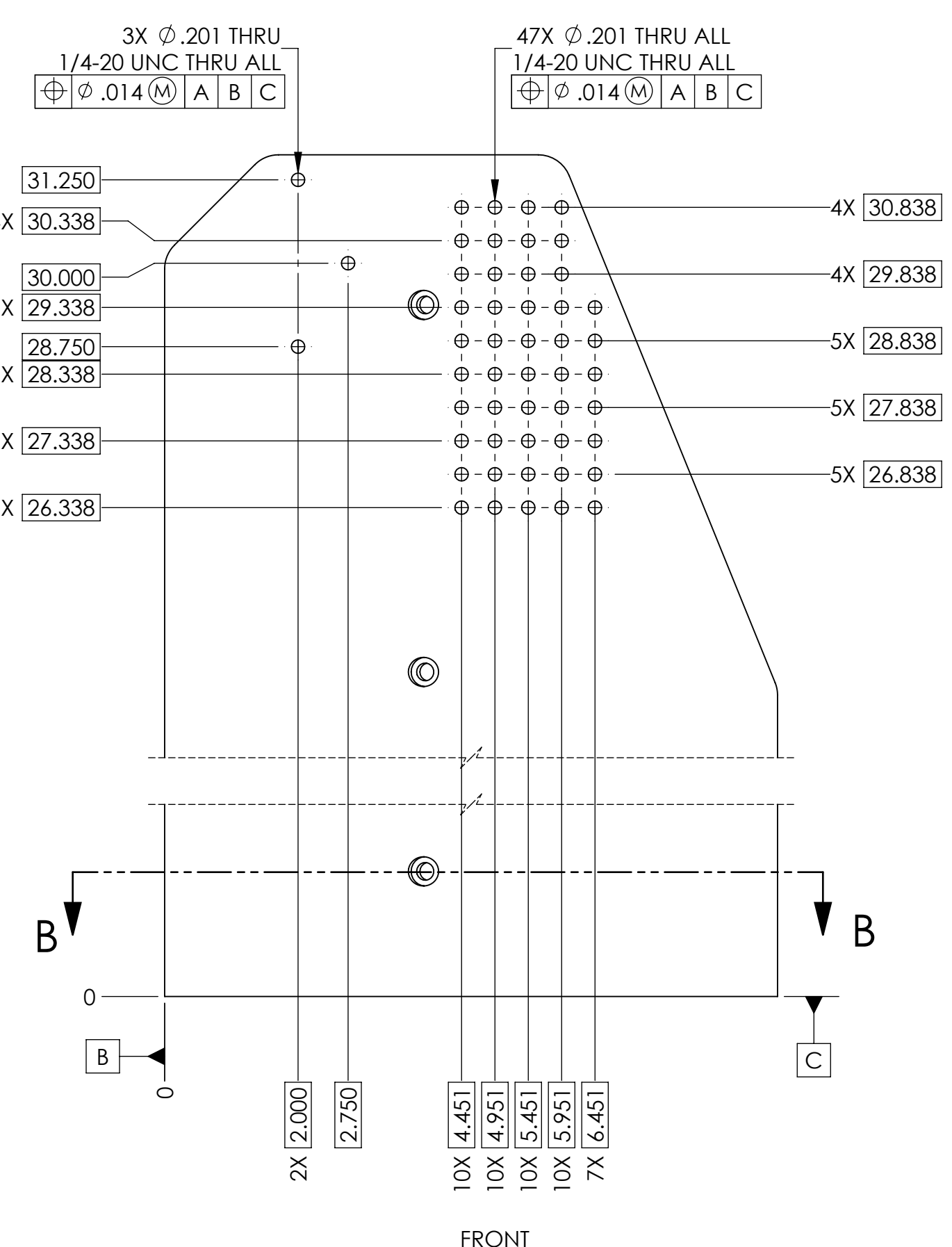
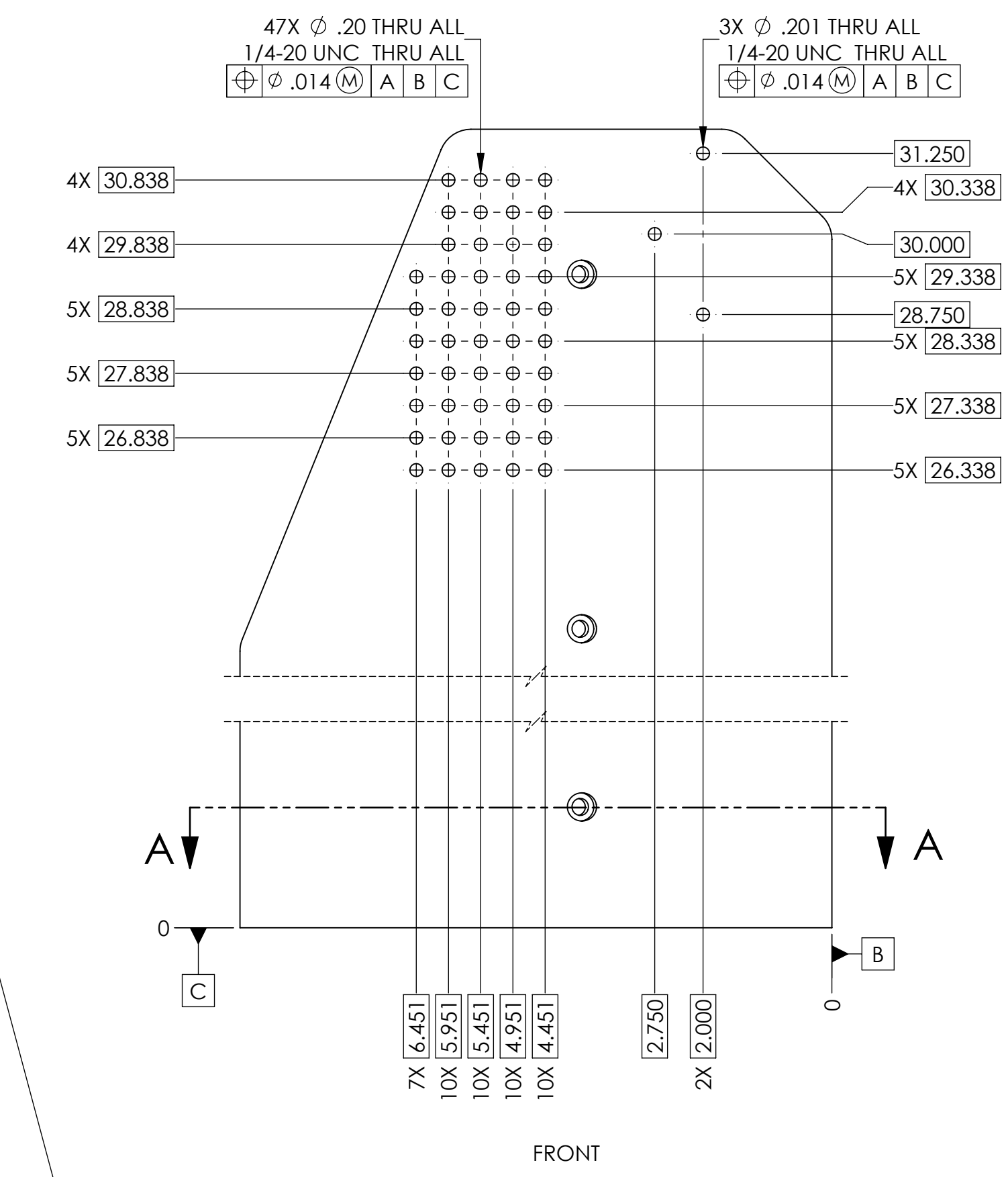
D1201307_RIGHT SIDE WALL αLIGO TCS CO2P TABLE PERISCOPE PART PDM REV: X-006 DRAWING PDM REV: X-008



6X ϕ .266 THRU ALL
 ϕ .438, FAR SIDE
 SEE DETAIL 'F' FOR C'BORE DEPTH
 ϕ .010 (M) D B C

DETAIL F
 SCALE 1 : 1

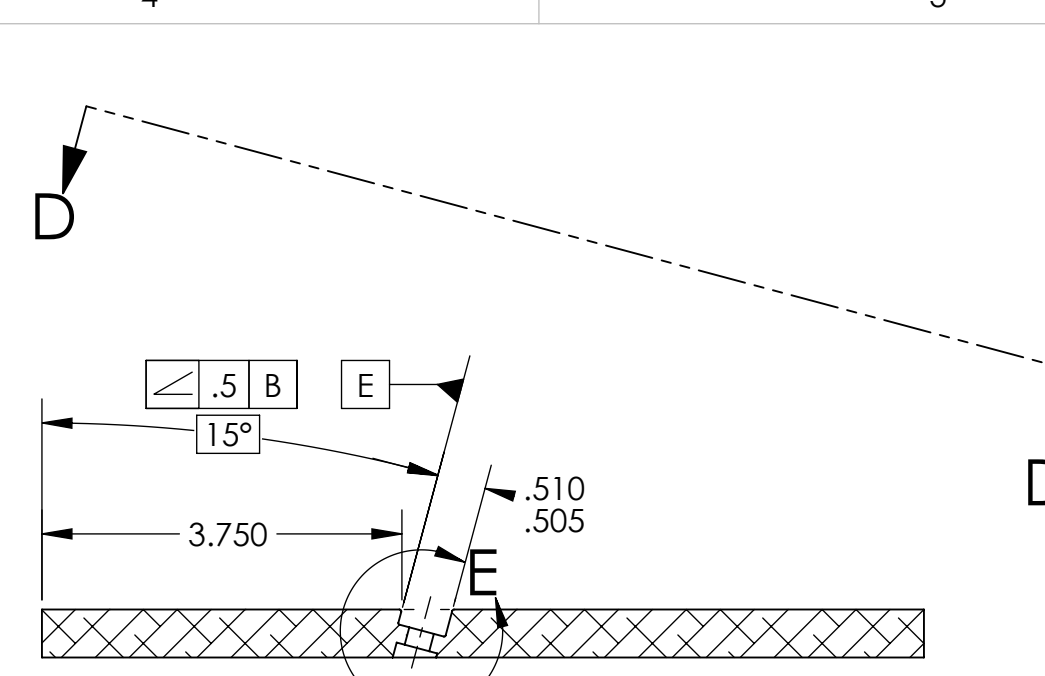
SECTION A-A



5X EQ. SP.
 @5.500=27.500

VIEW C-C

-01 DETAIL
 MAKE FROM: BLANK



DETAIL E
 SCALE 1 : 1

6X ϕ .266 THRU ALL
 ϕ .438, FAR SIDE
 SEE DETAIL 'E' FOR C'BORE DEPTH
 ϕ .014 (M) E B C

VIEW D-D

-02 DETAIL
 MAKE FROM: BLANK

LIGO CALIFORNIA INSTITUTE OF TECHNOLOGY
 MASSACHUSETTS INSTITUTE OF TECHNOLOGY

SIZE DWG. NO. **D1201307** REV. **v1**

SCALE: 1:2 PROJECTION: SHEET 2 OF 2

D1201307_RIGHT SIDE WALL_IGSO TCS CO2P TABLE FIBERSCOPE PART PDM REV: X-006 DRAWING PDM REV: X-008