

8

7

6

5

4

3

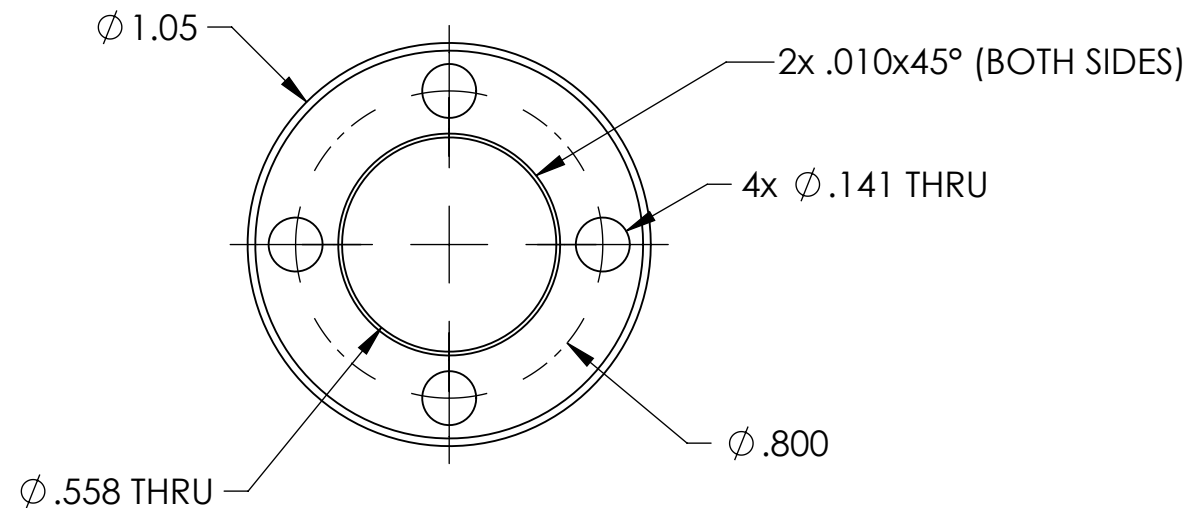
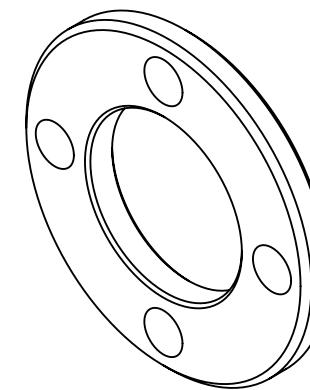
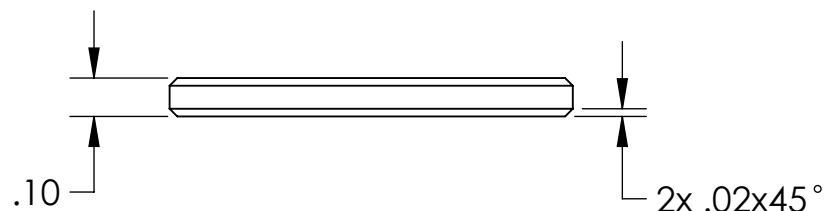
2

1

NOTES CONTINUED:

- 5. BAG AND TAG WITH PART AND SERIAL NUMBERS.
- 6. APPROXIMATE WEIGHT = 2.50 g.
- 7. MACHINE ALL SURFACES TO REMOVE OXIDES AND MILL FINISH. USE OF ABRASIVE REMOVAL TECHNIQUES IS NOT ALLOWED.
- 8. ALL PARTS SHALL BE MANUFACTURED IN ACCORDANCE WITH LIGO SPECIFICATION E0900364.

| REV. | DATE | DCN # | DRAWING TREE # |
|------|------------|-------------|----------------|
| v1 | 9 NOV 2012 | E1200997-x0 | - |
| - | - | - | - |
| - | - | - | - |



D1201281 OMC QPD FACE PLATE, PART PDM REV.: DRAWING PDM REV.:

| NOTES AND TOLERANCES: (UNLESS OTHERWISE SPECIFIED) | | | | LIGO CALIFORNIA INSTITUTE OF TECHNOLOGY MASSACHUSETTS INSTITUTE OF TECHNOLOGY | | PART NAME | | | | | | |
|--|--|---|--|---|--|------------------------------|--|---------------------------|-------------|------------------------------------|-------------|--------------|
| DIMENSIONS ARE IN | | 1. INTERPRET DRAWING PER ASME Y14.5-1994. 2. REMOVE ALL SHARP EDGES, .005-.015. 3. DO NOT SCALE FROM DRAWING. 4. ALL MACHINING FLUIDS MUST BE FULLY SYNTHETIC, FULLY WATER SOLUBLE AND FREE OF SULFUR, SILICONE, AND CHLORINE. | | SYSTEM ADVANCED LIGO | | SUB-SYSTEM ISC | | OMC QPD FACE PLATE | | | | |
| TOLERANCES: .XX ± .01 .XXX ± .005 | | MATERIAL 6061-T6 | | FINISH 63 μinch | | NEXT ASSY D1201279 | | DESIGNER J.LEWIS | 23 OCT 2012 | SIZE DWG. NO. B D1201281 | REV. v1 | |
| ANGULAR ± 1° | | | | | | | | CHECKER J.LEWIS | 23 OCT 2012 | SCALE: 4:1 | PROJECTION: | SHEET 1 OF 1 |

8

7

6

5

4

3

2

1