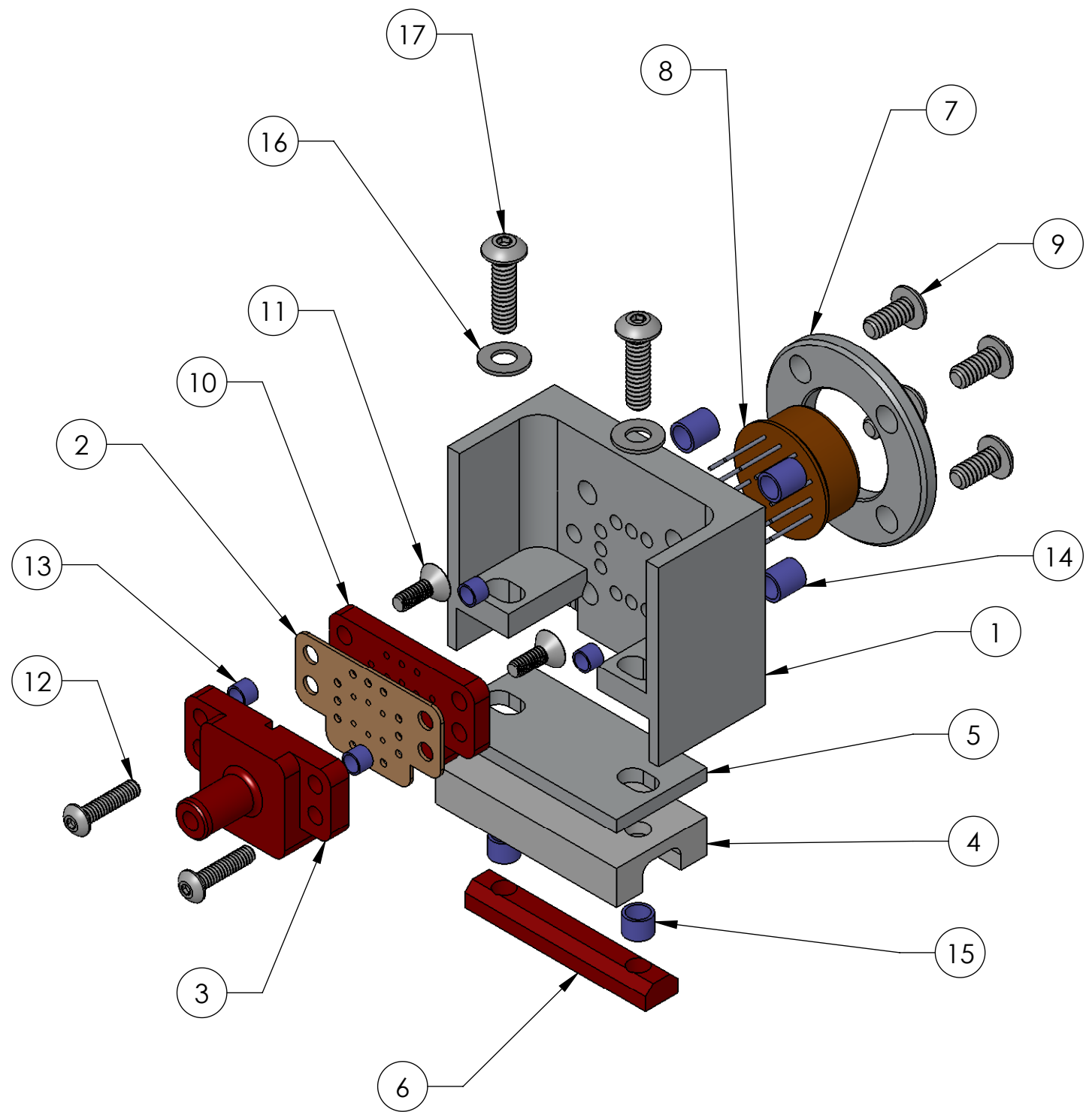


NOTES CONTINUED:

REV.	DATE	DCN #	DRAWING TREE #
v1	13 NOV 2012	E1200997-x0	-
-	-	-	-
-	-	-	-



ITEM NO.	PART NUMBER	DESCRIPTION	QTY.
1	D1201280 OMC QPD HOUSING	OMC QPD HOUSING	1
2	D1201311 OMC QPD CONNECTOR, FLEX CIRCUIT	OMC QPD CONNECTOR, FLEX CIRCUIT	1
3	D1201284 OMC QPD CONNECTOR, BACKSHELL	OMC QPD CONNECTOR, BACKSHELL	1
4	DT102211_aLIGO_OMC_Diode_Mount_Glass_Block	aLIGO OMC PD Mount Glass Block	1
5	D1201467 PD SHIM	aLIGO Output Mode Cleaner Diode Shim	1
6	D1201466 OMC PD NUT PLATE	aLIGO OMC PD Mount Nut Plate	1
7	D1201281 OMC QPD FACE PLATE	OMC QPD FACE PLATE	1
8	InGaAs-Q3000	DIODE 532 nm	1
9	92949A106	MCMASTER #4-40 x .25 BHCS	4
10	D1201282 OMC QPD CONNECTOR, FRONT	OMC QPD CONNECTOR, FRONT	1
11	92210A077	MCMASTER #2-56 x .25 FHCS	2
12	92949A079	MCMASTER #2-56 x .375" BHCS	2
13	1185-02EN086 2-56x086 Helicoil	EMHART HELI-COIL #2-56 x .086"	4
14	1185-04EN168 4-40x168 Helicoil	EMHART HELI-COIL #4-40 x .168"	4
15	1185-04EN112 4-40x112 Helicoil	EMHART HELI-COIL #4-40 x .112"	2
16	98019A309	MCMASTER #4 WASHER	2
17	92949A111	MCMASTER #4-40 x .438" BHCS	2

D1201279 OMC QPD MOUNT ASSEMBLY, PART PDM REV: X-000, DRAWING PDM REV: X-000

NOTES AND TOLERANCES: (UNLESS OTHERWISE SPECIFIED)

DIMENSIONS ARE IN ESTIMATED WEIGHT: 30.76 g

TOLERANCES:
 .XX ±
 .XXX ±
 ANGULAR ± °

MATERIAL SEE BOM FINISH N/A μinch

SCALE: 1:2 PROJECTION:

PART NAME OMC QPD MOUNT ASSEMBLY

SYSTEM ADVANCED LIGO SUB-SYSTEM ISC

DESIGNER J.LEWIS 13 NOV 2012 SIZE DWG. NO. B D1201279 REV. v1

DRAFTER J.LEWIS 13 NOV 2012

CHECKER APPROVAL

NEXT ASSY D1201439

SHEET 1 OF 1