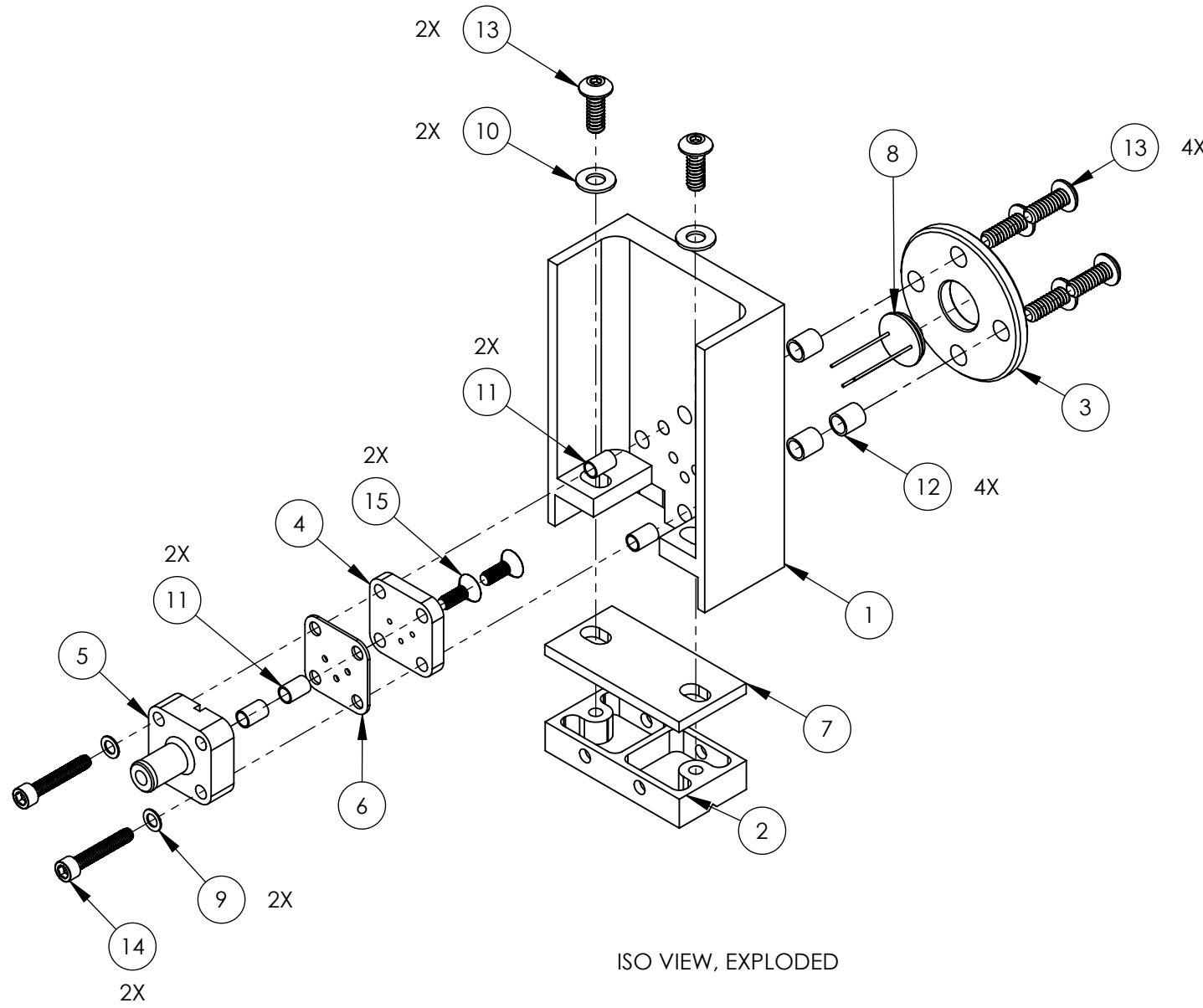
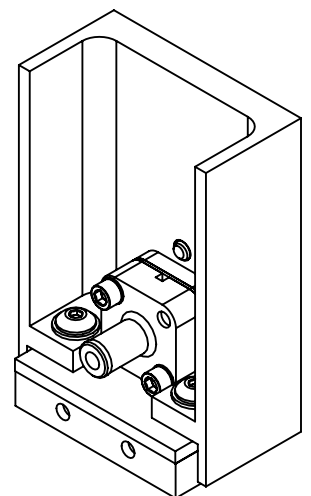


Redline Appert 20221108

REV.	DATE	DCN #	DRAWING TREE #
v1	13 NOV 2012	E1200997-X0	-
v2	18 MAR 2015	E1500181-x0	-
v3	18 MAR 2015	E1500181-x0	-



ISO VIEW, EXPLODED



ISO VIEW

Item 8 p/n  
 FHHL/Laser Components USA, Inc. IHGQEX3000  
 (CAD geometry can be the same)

ITEM NO.	PART NUMBER	DESCRIPTION	MATERIAL	Defult /RE Q
15	92210A077 McMASTER-CARR OR EQ.	SCREW, FHSC, #2-56 x .25	18-8 SSTL	2
14	92200A081 McMASTER-CARR OR EQ.	SCREW, SHC, #2-56 x .50	300 SSTL	2
13	BU-405-N UC COMPONENTS OR EQ.	SCREW, BHSC, #4-40 x .312	18-8 SSTL	6
12	1185-04EN224 EMHART OR EQ.	HELI-COIL #4-40 x .224"	6061-T6 (SS)	4
11	1185-02EN172 EMHART OR EQ.	HELI-COIL #2-56 x .172"	6061-T6 (SS)	4
10	98019A309 McMASTER-CARR OR EQ.	WASHER, FLAT, #4	300 SSTL	2
9	90945A705 McMASTER-CARR OR EQ.	WASHER, FLAT, NO. 2	300 SSTL	2
8		InGaAs-3000 QPD	-	1
7	D1201467	αLIGO Output Mode Cleaner Diode Shim	6061-T6 (SS)	1
6	D1201312	OMC DCPD CONNECTOR, FLEX CIRCUIT	-	1
5	D1201278	OMC DCPD CONNECTOR, BACKSHELL	Polyethereth erketone (PEEK)	1
4	D1201276	OMC DCPD CONNECTOR, FRONT	Polyethereth erketone (PEEK)	1
3	D1201275	OMC DCPD FACE PLATE	6061-T6 (SS)	1
2	D1300498	αLIGO OMC DIODE MOUNT BLOCK	AISI 304	1
1	D1201274	OMC DCDP HOUSING	6061-T6 (SS)	1

PARTS LIST

NOTES AND TOLERANCES: (UNLESS OTHERWISE SPECIFIED)  
 DIMENSIONS ARE IN INCHES  
 TOLERANCES:  
 .XX ± .01  
 .XXX ± .005  
 ANGULAR ± 1.0°  
 ESTIMATED WEIGHT: 49.27 g.  
 MATERIAL SEE BOM  
 FINISH N/A μinch

**LIGO** CALIFORNIA INSTITUTE OF TECHNOLOGY  
 MASSACHUSETTS INSTITUTE OF TECHNOLOGY

SYSTEM ADVANCED LIGO SUB-SYSTEM ISC  
 NEXT ASSY D1201439

PART NAME OMC DCPD MOUNT ASSEMBLY  
 DESIGNER J.LEWIS 13 NOV 2012 SIZE DWG. NO. B D1201273 REV. v3  
 DRAFTER J.LEWIS 13 NOV 2012  
 CHECKER APPROVAL  
 SCALE: 1:1 PROJECTION: SHEET 1 OF 1

D1201273 OMC DCPD MOUNT ASSEMBLY, PART PDM REV: X-016, DRAWING PDM REV: X-007