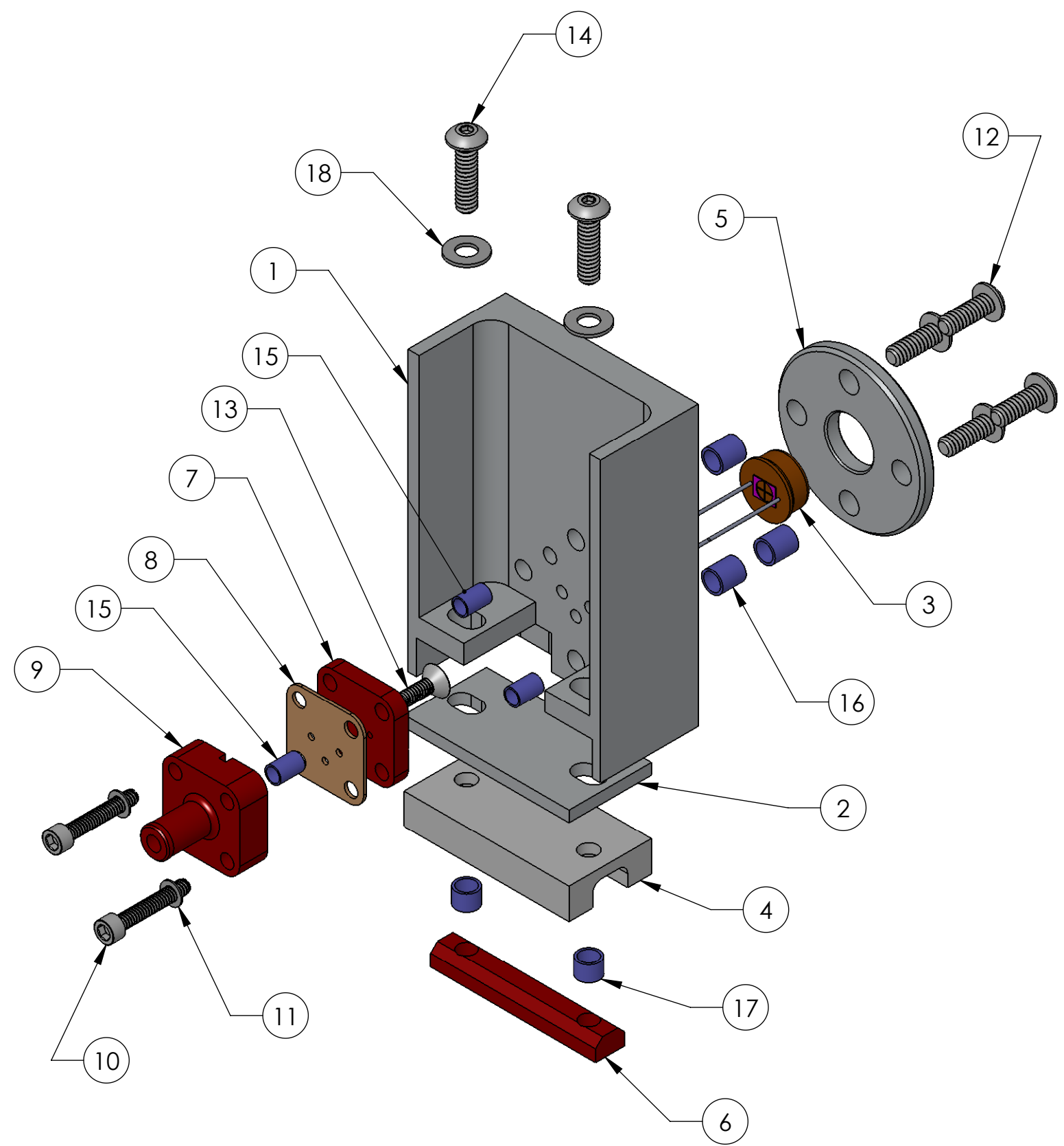


NOTES CONTINUED:

REV.	DATE	DCN #	DRAWING TREE #
v1	13 NOV 2012	E1200997-X0	-
-	-	-	-
-	-	-	-



ITEM NO.	PART NUMBER	DESCRIPTION	QTY.
1	D1201274 OMC DCPD HOUSING	OMC DCPD HOUSING	1
2	D1201467 PD SHIM	aLIGO Output Mode Cleaner Diode Shim	1
3	SWPS_LSC_AIR-VAC_v1 PD PE C30642G	InGaAs-3000 QPD	1
4	D1102211_aLIGO_OMC_Diode_Mount_Glass_Block	aLIGO OMC PD Mount Glass Block	1
5	D1201275 OMC DCPD FACE PLATE	OMC DCPD FACE PLATE	1
6	D1201466 OMC PD NUT PLATE	aLIGO OMC PD Mount Nut Plate	1
7	D1201276 OMC DCPD CONNECTOR, FRONT	OMC DCPD CONNECTOR, FRONT	1
8	D1201312 OMC DCPD CONNECTOR, FLEX CIRCUIT	OMC DCPD CONNECTOR, FLEX CIRCUIT	1
9	D1201278 OMC DCPD CONNECTOR, BACKSHELL	OMC DCPD CONNECTOR, BACKSHELL	1
10	92200A081	MCMASTER #2-56 x .50 SHCS	2
11	90945A705	MCMASTER #2 WASHER	2
12	92949A107	MCMASTER #4-40 x .312	4
13	92210A077	MCMASTER #2-56 x .25 FHCS	2
14	92949A111	MCMASTER #4-40 x .438" BHCS	2
15	1185-02ENT172 2-56x172 Helicoil	EMHART HELI-COIL #2-56 x .172"	4
16	1185-04ENT168 4-40x168 Helicoil	EMHART HELI-COIL #4-40 x .168"	4
17	1185-04ENT112 4-40x112 Helicoil	EMHART HELI-COIL #4-40 x .112"	2
18	98019A309	MCMASTER #4 WASHER	2

D1201273 OMC DCPD MOUNT ASSEMBLY, PART PDM REV: X-000, DRAWING PDM REV: X-001

NOTES AND TOLERANCES: (UNLESS OTHERWISE SPECIFIED)

DIMENSIONS ARE IN ESTIMATED WEIGHT: 43.39 g.

TOLERANCES:  
 .XX ±  
 .XXX ±  
 ANGULAR ± °

MATERIAL SEE BOM FINISH N/A μinch

**LIGO** CALIFORNIA INSTITUTE OF TECHNOLOGY MASSACHUSETTS INSTITUTE OF TECHNOLOGY

SYSTEM ADVANCED LIGO SUB-SYSTEM ISC

PART NAME OMC DCPD MOUNT ASSEMBLY

DESIGNER J.LEWIS 13 NOV 2012 SIZE DWG. NO. B D1201273 REV. v1

DRAFTER J.LEWIS 13 NOV 2012

CHECKER APPROVAL

NEXT ASSY D1201439

SCALE: 1:4 PROJECTION: SHEET 1 OF 1