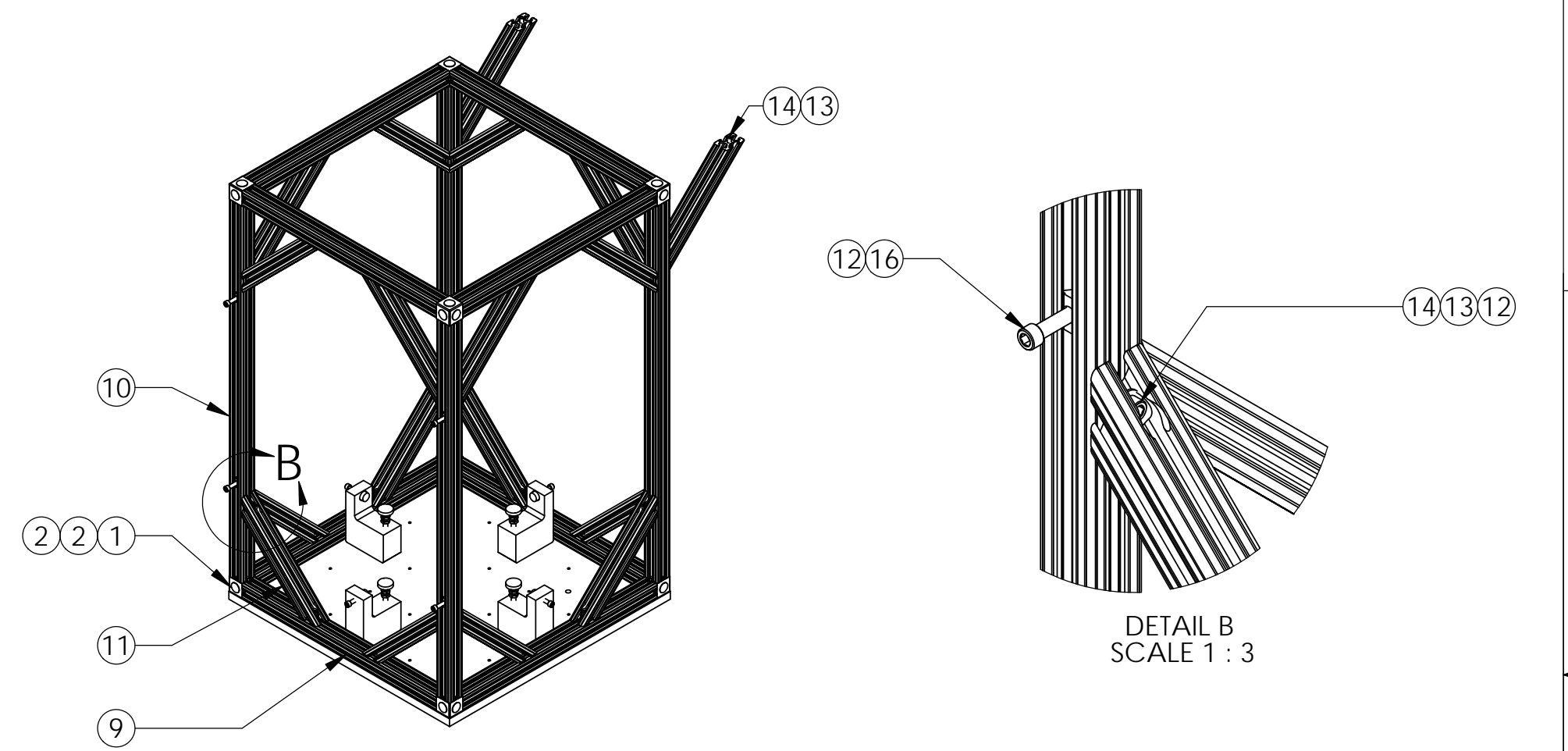
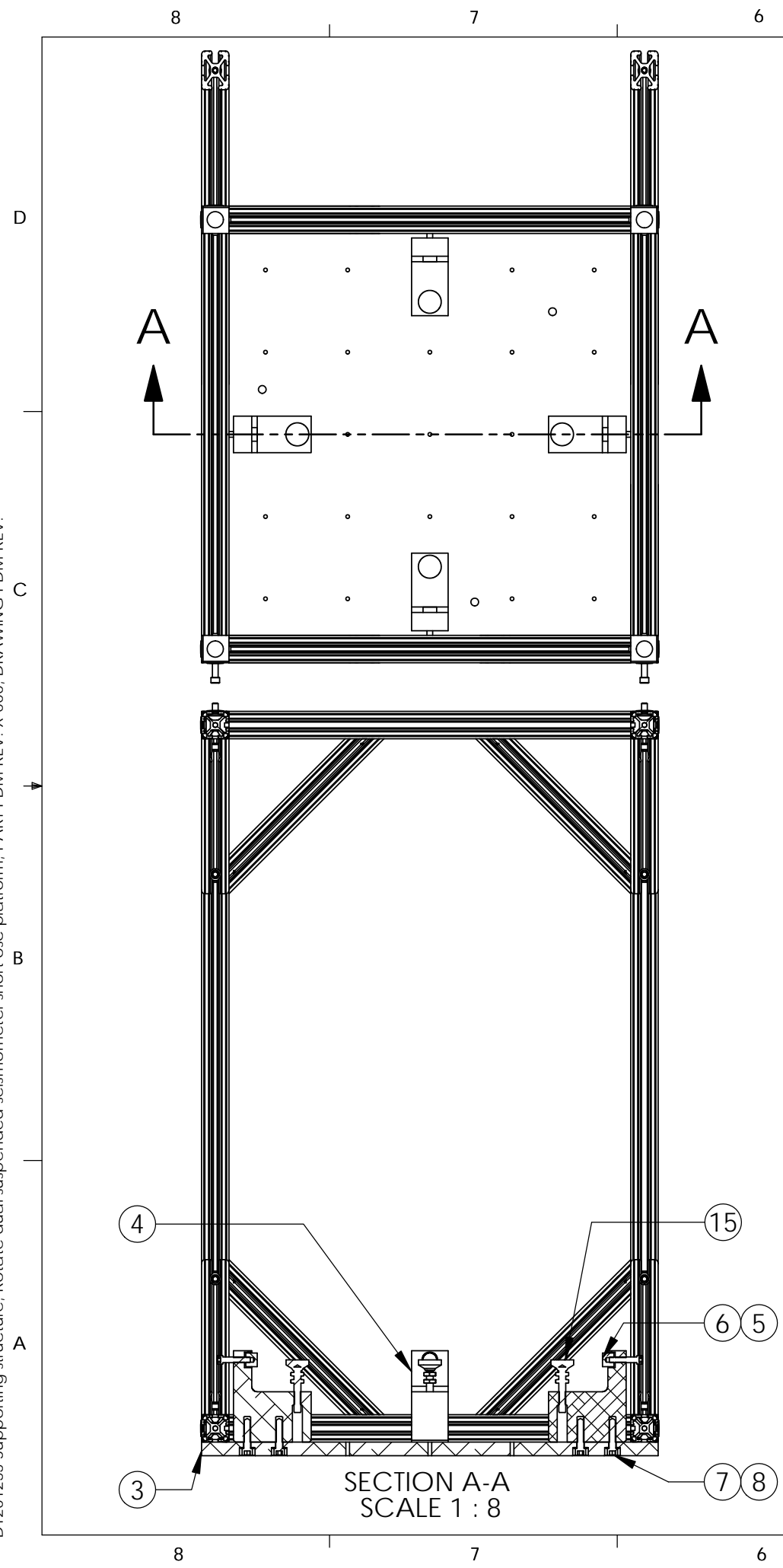


D1201255 Supporting structure, Rotate dual suspended seismometer short osc platform, PART PDM REV: X-000, DRAWING PDM REV:

REV.	DATE	DCN #	DRAWING TREE #
v1	28 SEP 2012	E1200841	-
-	-	-	-
-	-	-	-

ROTATION CONFIGURATION



ITEM NO.	PART NUMBER	DESCRIPTION	MATERIAL	REQ
16	McMaster 92185A585	SHC Screw 5/16"-18 Thread, 1-1/4" lg.		4
15	JWWinco 6T2SNT	Snap-Lock Non-Skid Leveling Mount 3/8"-16 x 2" lg.	Stainless Steel	4
14	McMaster 90128A581	SHC Screw 5/16"-18 x 3/4" lg.	Alloy Steel	44
13	McMaster 90126A030	Flat Washer 5/16" Screw Size, 11/16" OD, .05"-.08" Thick	Alloy Steel	44
12	McMaster 47065T229	Inch T-Slotted Framing System Drop-in Fastener W/Double-Spring Tab, for 1-1/2"	Aluminum	46
11	McMaster 47065T270	T-Slotted Framing System Heavy Dty 90 Deg Brace, Sngl, 2-Hole, for 1-1/2", 12" L	Aluminum	18
10	D1002807	External vertical bar	Aluminum	4
9	D1002808	External horizontal bar	Aluminum	8
8	McMaster 94744A265	Flat Washer 3/8" Screw Size, 47/64" Narrow OD, .05"-.12" Thk	Alloy Steel	8
7	McMaster 90128A630	SHC Screw 3/8"-16 x 1-3/4" lg.	Alloy Steel	8
6	McMaster 9223K5	Bumper W/ Metal Core 3/4" Diameter, 5/16"-18 Threaded Hole	POLYURETHANE	4
5	McMaster 90128A587	SHC Screw 5/16"-18 x 1-1/2" lg.	Alloy Steel	4
4	D1002466	Lower stop	6061-T6 Al	4
3	D1002441	External bottom plate	6061-T6 Al	1
2	McMaster 91255A582	Button Head Socket Cap Screw 5/16"-18 x 7/8" lg.	Alloy Steel	24
1	McMaster 47065T245	T-Slotted Framing System Corner Connector, 3-Way, for 1-1/2" Extrusion	Aluminum	8

NOTES AND TOLERANCES: (UNLESS OTHERWISE SPECIFIED)

- INTERPRET DRAWING PER ASME Y14.5-1994.
- REMOVE ALL SHARP EDGES, R.02 MIN.
- DO NOT SCALE FROM DRAWING.
- ADAPTED FROM D1002442.
- APPROXIMATE WEIGHT = 110 LB. ROTATE 170 LB. TRANSLATE

DIMENSIONS ARE IN INCHES
 TOLERANCES:
 .XX ± N/A
 .XXX ± N/A
 ANGULAR ± N/A*

PARTS LIST

MATERIAL		FINISH		NEXT ASSY		PART NAME	
N/A		N/A μinch		D1201257 / D1201268		Supporting structure	

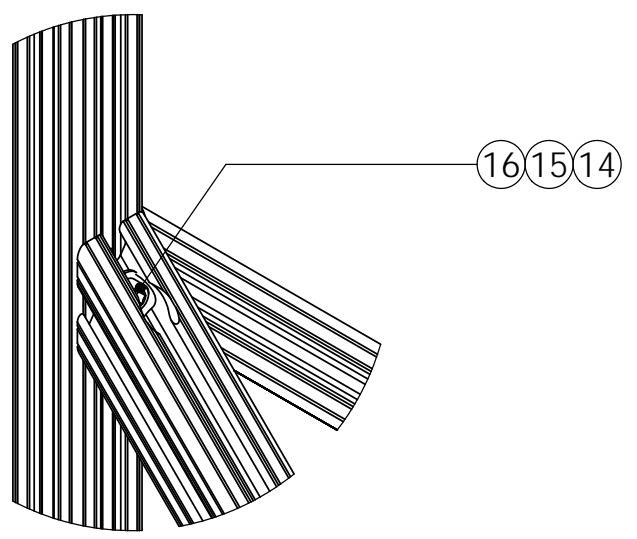
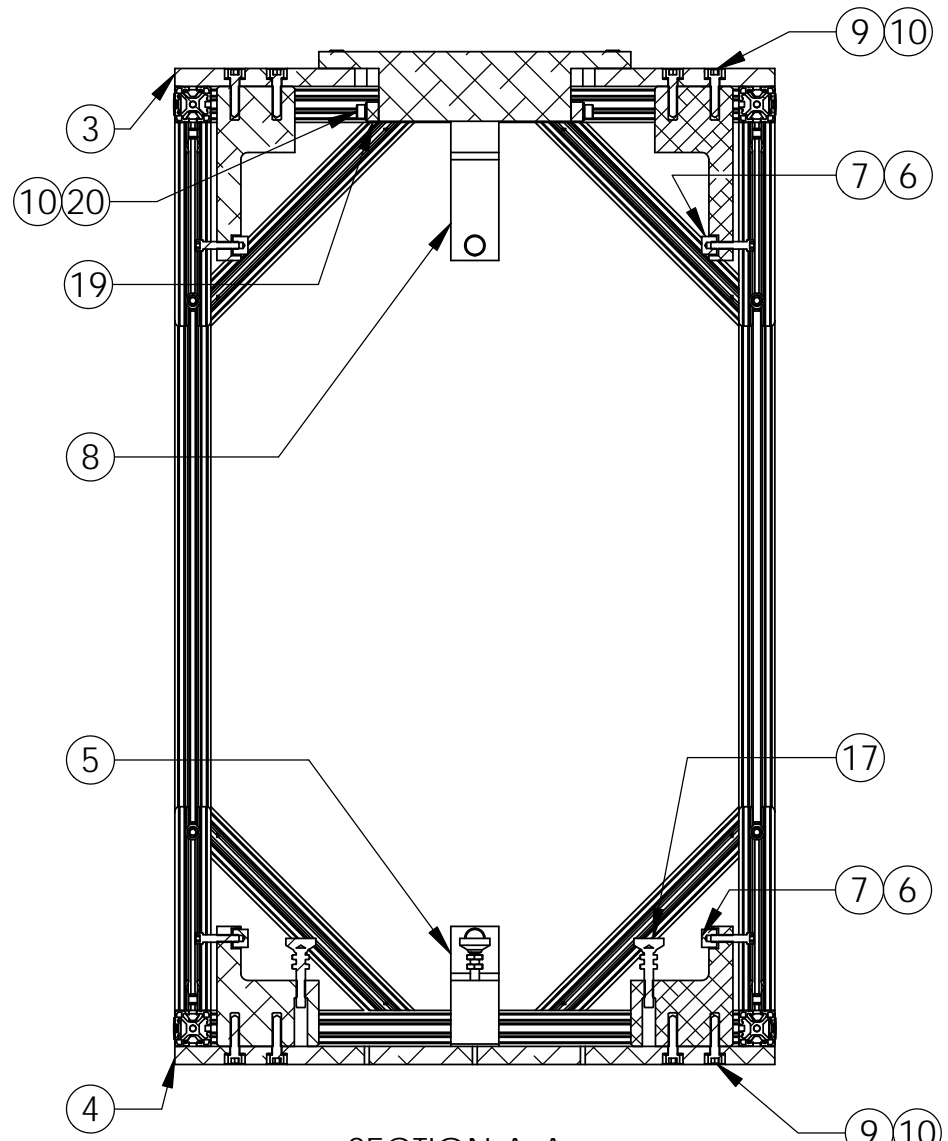
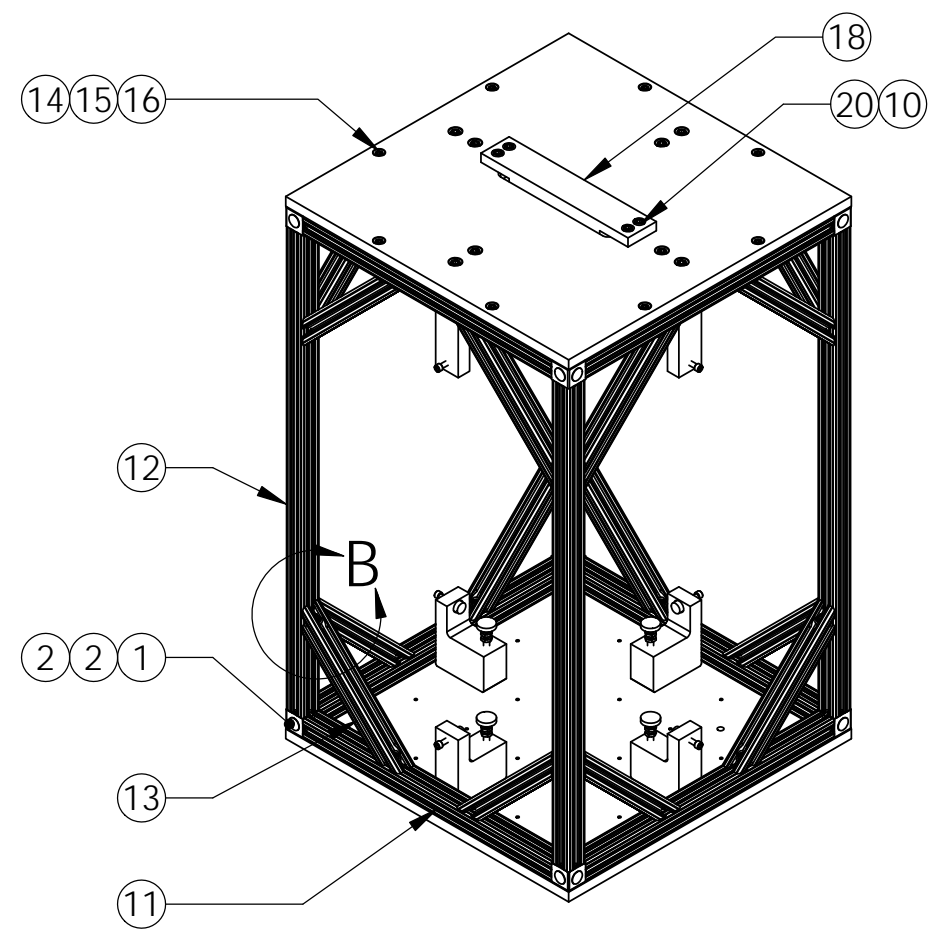
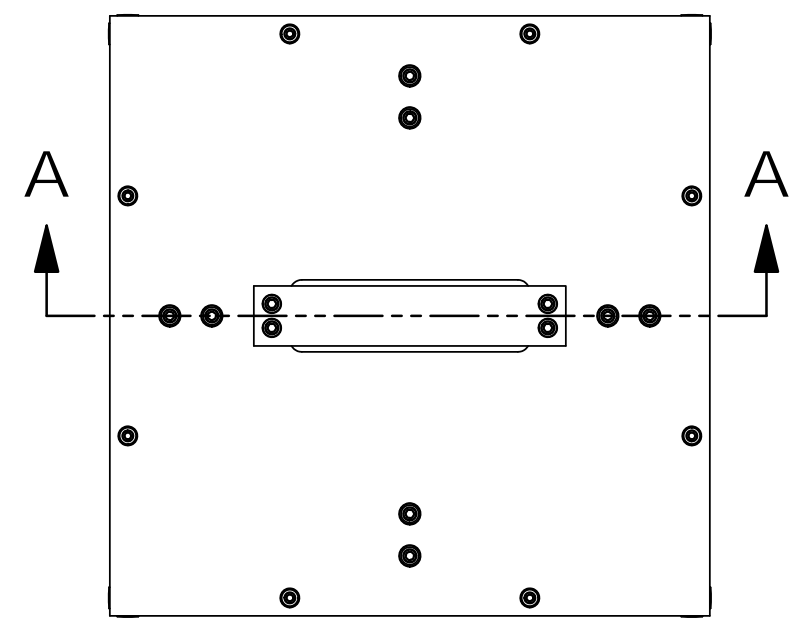
LIGO CALIFORNIA INSTITUTE OF TECHNOLOGY
 MASSACHUSETTS INSTITUTE OF TECHNOLOGY

DESIGNER	P. KNOEHE	17 SEP 2012	SIZE	DWG. NO.	REV.
DRAFTER	P. KNOEHE	17 SEP 2012	B	D1201255	v1
CHECKER	MATCHARD	28 SEP 2012	SCALE:	1:8	PROJECTION:
APPROVAL	K. MASON	28 SEP 2012	SHEET 1 OF 2		

D1201255 Supporting structure, Rotate dual suspended seismometer short osc platform, PART PDM REV: X-000, DRAWING PDM REV:

TRANSLATION CONFIGURATION

Note: Differences to rotation setup are two missing strut supports and addition of external top plate with top clamp



SECTION A-A
SCALE 1 : 8

DETAIL B
SCALE 1 : 3

20	McMaster 90128A624	SHC Screw 3/8"-16 x 1" lg.	Alloy Steel	8
19	D1201239	Side clamp element	6061-T6 Al	2
18	D1201237	Top clamp	6061-T6 Al	1
17	JWWinco 6T2SNT	Snap-Lock Non-Skid Leveling Mount 3/8"-16 x 2" lg.	Stainless Steel	4
16	McMaster 90128A581	SHC Screw 5/16"-18 x 3/4" lg.	Alloy Steel	48
15	McMaster 90126A030	Flat Washer 5/16" Screw Size, 11/16" OD, .05"-.08" Thick	Alloy Steel	48
14	McMaster 47065T229	Inch T-Slotted Framing System Drop-in Fastener W/Double-Spring Tab, for 1-1/2"	Aluminum	48
13	McMaster 47065T270	T-Slotted Framing System Heavy Dty 90 Deg Brace, Sngl, 2-Hole, for 1-1/2", 12" L	Aluminum	16
12	D1002807	External vertical bar	Aluminum	4
11	D1002808	External horizontal bar	Aluminum	8
10	McMaster 94744A265	Flat Washer 3/8" Screw Size, 47/64" Narrow OD, .05"-.12" Thk	Alloy Steel	24
9	McMaster 90128A630	SHC Screw 3/8"-16 x 1-3/4" lg.	Alloy Steel	16
8	D1002467	Upper stop	6061-T6 Al	4
7	McMaster 9223K5	Bumper W/ Metal Core 3/4" Diameter, 5/16"-18 Threaded Hole	POLYURETHANE	8
6	McMaster 90128A587	SHC Screw 5/16"-18 x 1-1/2" lg.	Alloy Steel	8
5	D1002466	Lower stop	6061-T6 Al	4
4	D1002441	External bottom plate	6061-T6 Al	1
3	D1201256	External top plate	6061-T6 Al	1
2	McMaster 91255A582	Button Head Socket Cap Screw 5/16"-18 x 7/8" lg.	Alloy Steel	24
1	McMaster 47065T245	T-Slotted Framing System Corner Connector, 3-Way, for 1-1/2" Extrusion	Aluminum	8
ITEM NO.	PART NUMBER	DESCRIPTION	MATERIAL	REQ

PARTS LIST

LIGO CALIFORNIA INSTITUTE OF TECHNOLOGY
MASSACHUSETTS INSTITUTE OF TECHNOLOGY

SIZE	DWG. NO.	REV.
B	D1201255	V1

SCALE: 1:12 PROJECTION: SHEET 2 OF 2