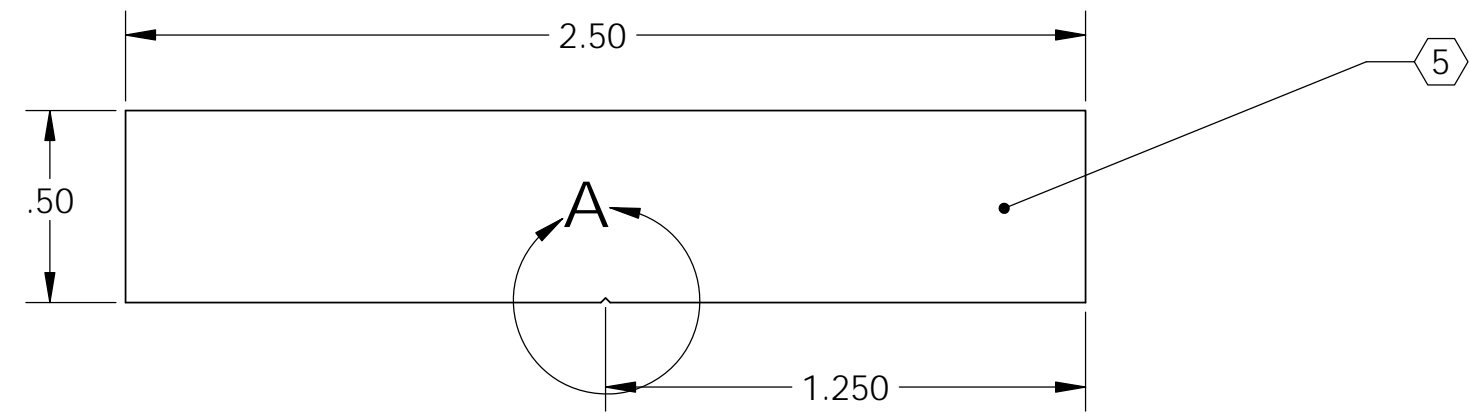
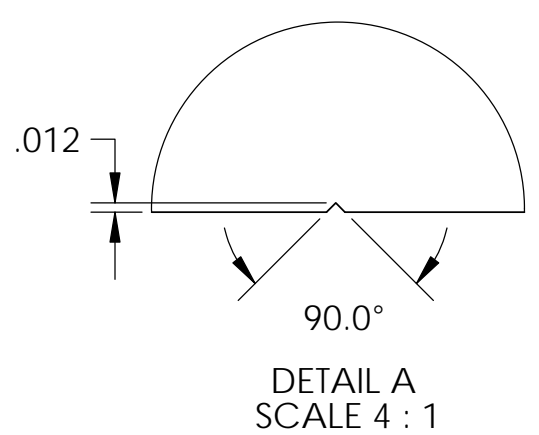
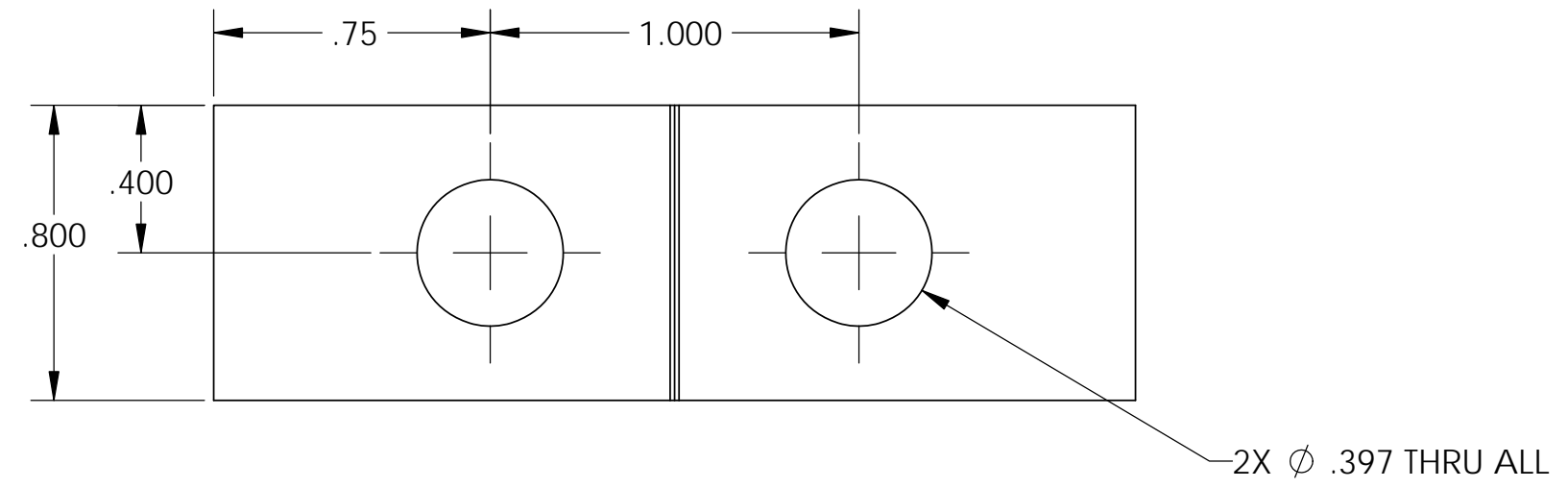


D1201239 Side clamp element, Dual suspended seismometer platform, PART PDM REV: X-000, DRAWING PDM REV:

NOTES CONTINUED:
 ⑤ SCRIBE, ENGRAVE (A VIBRATORY TOOL MAY BE USED), LASER MARK OR MECHANICALLY STAMP (NO INKS OR DYES) DRAWING PART NUMBER, REVISION (AND VARIANT OR "TYPE" IF APPLICABLE) ON NOTED SURFACE OF PART FOLLOWED ON THE NEXT LINE WITH A THREE DIGIT SERIAL NUMBER. SERIAL NUMBERS START AT 001 FOR THE FIRST ARTICLE AND PROCEED CONSECUTIVELY. USE MINIMUM 0.12" HIGH CHARACTERS, UNLESS THE SIZE OF THE PART DICTATES SMALLER CHARACTERS. EXAMPLE: DXXXXXX-VY, TYPE-XX, S/N XXX

REV.	DATE	DCN #	DRAWING TREE #
v1	28 SEP 2012	E1200841	-
-	-	-	-
-	-	-	-



NOTES AND TOLERANCES: (UNLESS OTHERWISE SPECIFIED)				LIGO CALIFORNIA INSTITUTE OF TECHNOLOGY MASSACHUSETTS INSTITUTE OF TECHNOLOGY		PART NAME	
DIMENSIONS ARE IN INCHES		1. INTERPRET DRAWING PER ASME Y14.5-1994. 2. DO NOT REMOVE SHARP EDGES. 3. DO NOT SCALE FROM DRAWING. 4. APPROXIMATE WEIGHT = 0.10 LB.		ADVANCED LIGO		Side clamp element	
TOLERANCES: .XX ± .015 .XXX ± .005		MATERIAL 6061-T6 Al		SUB-SYSTEM SEI		DESIGNER P. KNOEHE 13 SEP 2012	
ANGULAR ± 0.5°		FINISH 63 μinch		NEXT ASSY D1201254 / D1201255 / D1201271		DRAFTER P. KNOEHE 13 SEP 2012	
				APPROVAL MATICHARD 28 SEP 2012		CHECKER MATICHARD 28 SEP 2012	
						SCALE: 2:1	
						PROJECTION:	
						DWG. NO. D1201239	
						REV. v1	
						SHEET 1 OF 1	