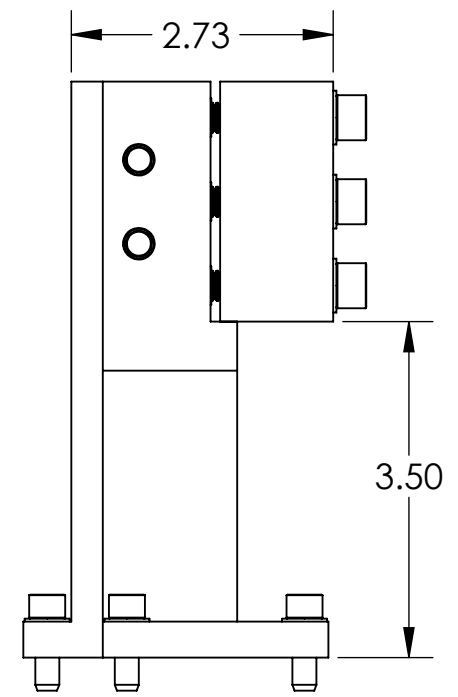
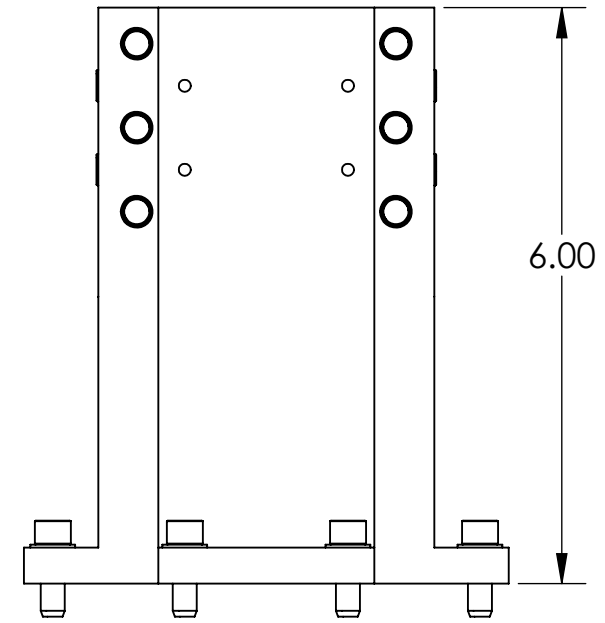
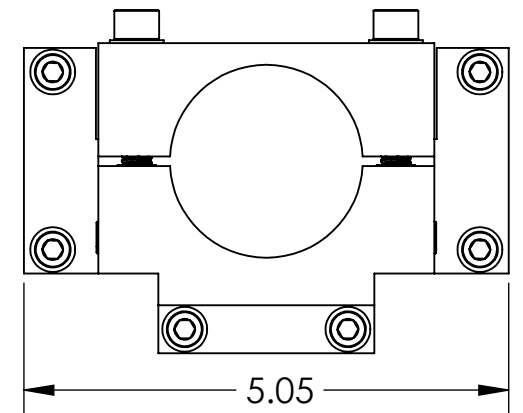
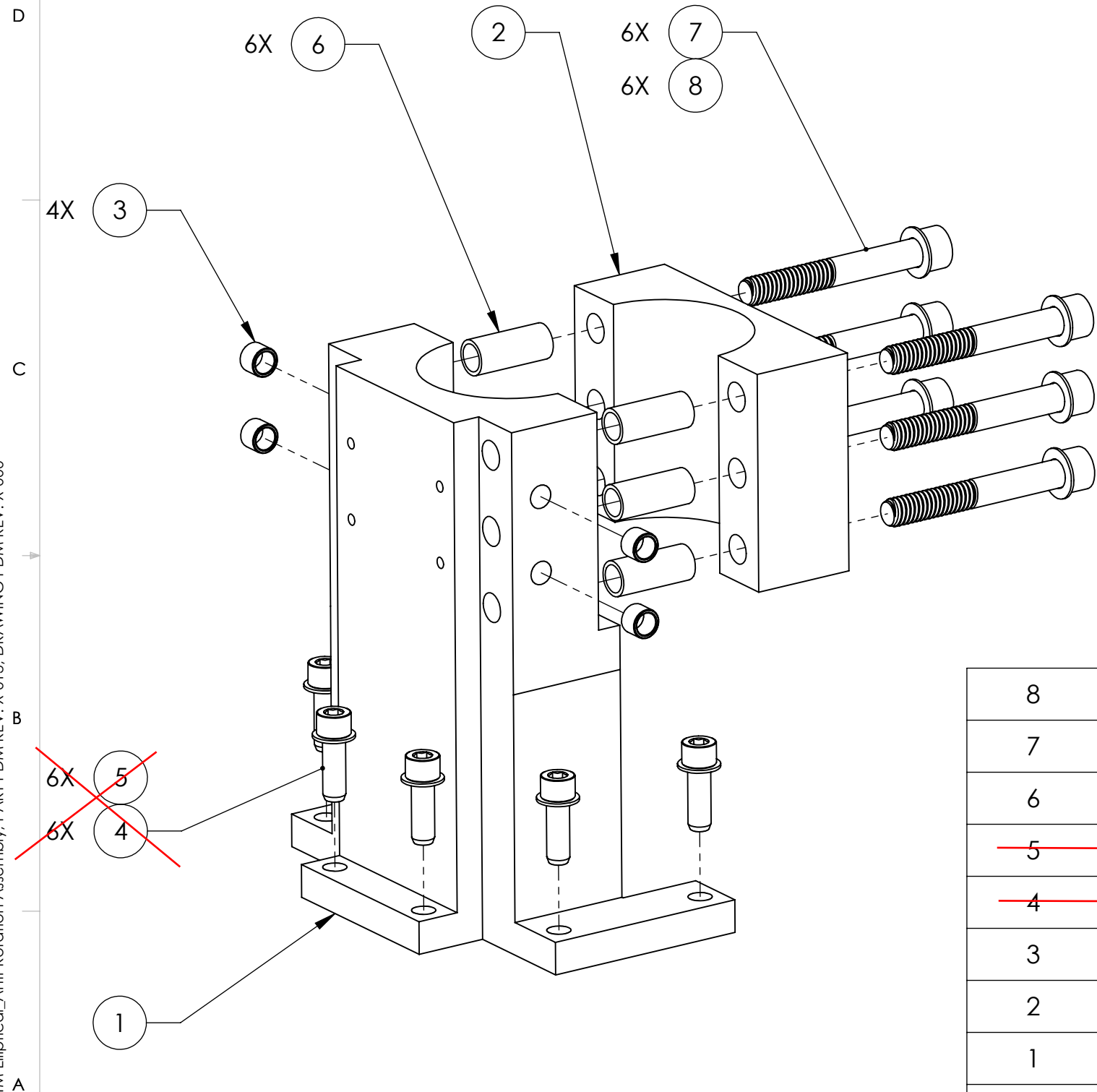


D1201228\_dLIGO\_ACB-ITM Elliptical\_Anti-Rotation Assembly, PART PDM REV: X-013, DRAWING PDM REV: X-000

NOTES CONTINUED:

REV.	DATE	DCN #	DRAWING TREE #
v1	16 OCT 2012	-	-
-	-	-	-
-	-	-	-



ITEM NO.	PART NUMBER	DESCRIPTION	MATERIAL	REQ	TOTAL
8	WF-31	FLAT WASHER, 5/16" Sz	18-8 SSTL	6	6
7	C-1832-N	SHCS-5/16-18 X 2"	300 SSTL	6	6
6	1185-5EN938	HELICOIL, 5/16-18 X 0.938 LONG	NITRONIC 60	6	6
<del>5</del>	<del>WF-25</del>	<del>FLAT WASHER 1/4 SCREW SIZE</del>	<del>18-8 SSTL</del>	<del>6</del>	<del>6</del>
<del>4</del>	<del>C-2012-N</del>	<del>1/4"-20 X 0.75" SHCS</del>	<del>18-8 SSTL</del>	<del>6</del>	<del>6</del>
3	1185-4EN250	HELI-COIL INSERT, 1/4-20 X 1/4 LG	NITRONIC 60	4	4
2	D1201199	ANTI-ROTATION CLAMP	6061-T6 Al	1	1
1	D1201198	ANTI-ROTATION BLOCK	6061-T6 Al	1	1

PARTS LIST

NOTES AND TOLERANCES: (UNLESS OTHERWISE SPECIFIED)

DIMENSIONS ARE IN INCHES

TOLERANCES:  
 .XX ± .03  
 .XXX ± .010  
 ANGULAR ± 1.0°

1. INTERPRET DRAWING PER ASME Y14.5-1994.  
 2. REMOVE ALL SHARP EDGES, .005-.015, FOR MACHINED PARTS. ROUND ALL EDGES APPROXIMATELY R.02 FOR SHEET METAL PARTS.  
 3. DO NOT SCALE FROM DRAWING.  
 4. ALL MACHINING FLUIDS MUST BE FULLY SYNTHETIC, FULLY WATER SOLUBLE AND FREE OF SULFUR, SILICONE, AND CHLORINE.

MATERIAL N/A FINISH N/A μinch

**LIGO** CALIFORNIA INSTITUTE OF TECHNOLOGY  
 MASSACHUSETTS INSTITUTE OF TECHNOLOGY

SYSTEM: ADVANCED LIGO SUB-SYSTEM: AOS

PART NAME: SLC ANTI-ROTATION ASSY

DESIGNER: J. LEWIS 24 AUG 2012  
 DRAFTER: TQ. NGUYEN 16 OCT 2012  
 CHECKER: L. AUSTIN  
 APPROVAL: M. SMITH

SIZE DWG. NO. B D1201228 REV. v2

SCALE: 1:2 PROJECTION: SHEET 1 OF 1