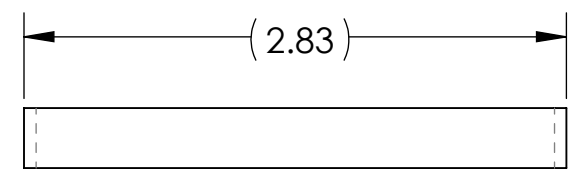


D1201142_BASE, αLIGO TCS CO2 LASER PD PREAMP ASSEMBLY, PART PDM REV: X-007, DRAWING PDM REV: X-006

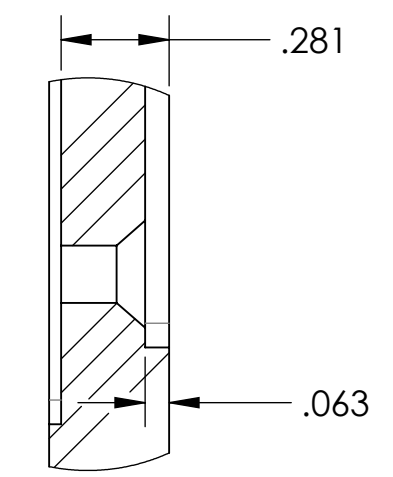
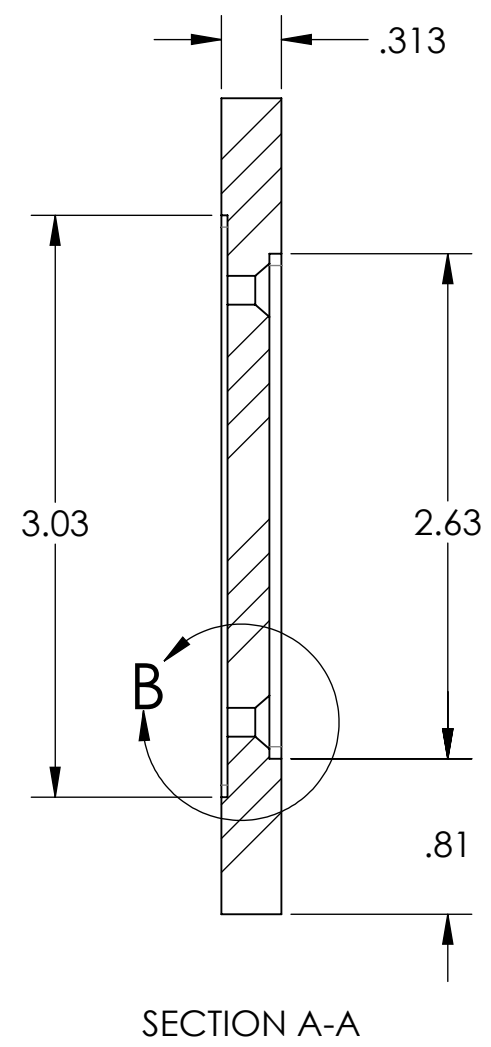
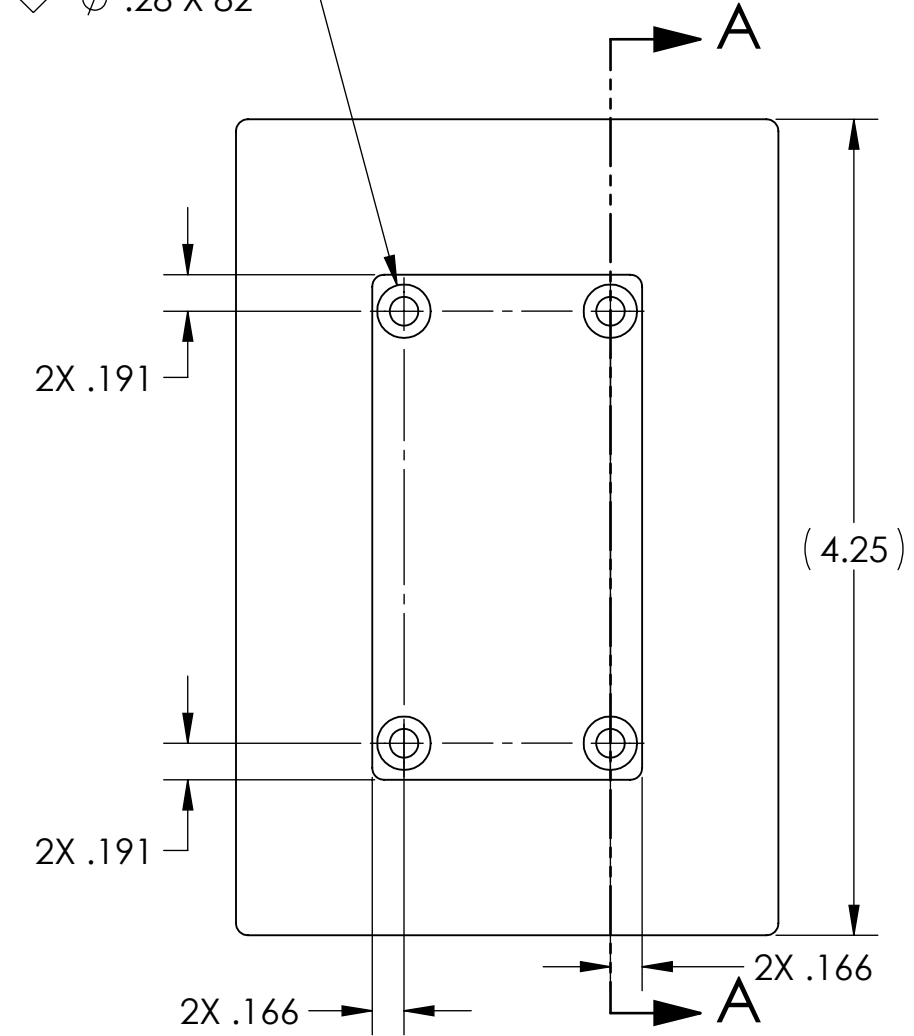
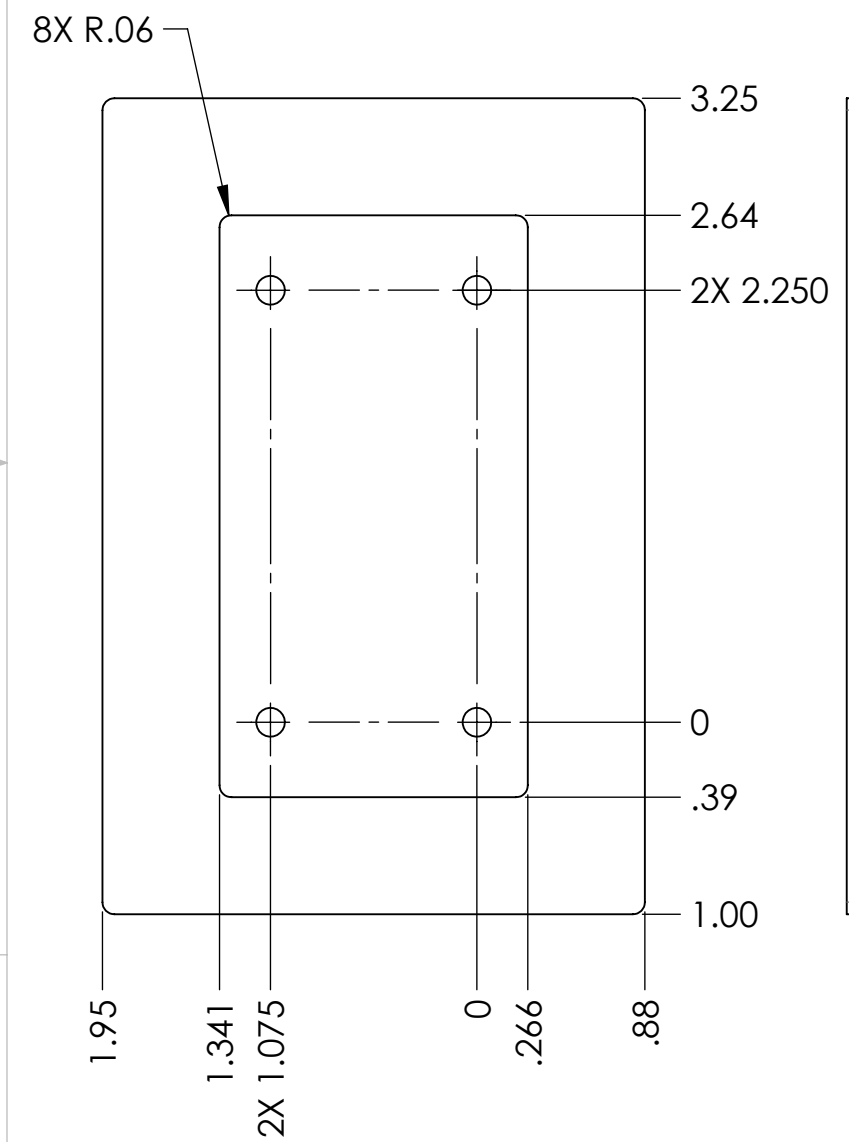
NOTES CONTINUED:
 5. SCRIBE, ENGRAVE (A VIBRATORY TOOL MAY BE USED), LASER MARK OR MECHANICALLY STAMP (NO INKS OR DYES) DRAWING PART NUMBER, REVISION (AND VARIANT OR "TYPE" IF APPLICABLE) ON NOTED SURFACE OF PART FOLLOWED ON THE NEXT LINE WITH A THREE DIGIT SERIAL NUMBER. SERIAL NUMBERS START AT 001 FOR THE FIRST ARTICLE AND PROCEED CONSECUTIVELY. USE MINIMUM 0.12" HIGH CHARACTERS, UNLESS THE SIZE OF THE PART DICTATES SMALLER CHARACTERS. EXAMPLE: DXXXXXX-VY, TYPE-XX, S/N XXX

- 6. APPROXIMATE WEIGHT = 0.141 LB
- 7. MACHINE ALL SURFACES TO REMOVE OXIDES AND MILL FINISH. USE OF ABRASIVE REMOVAL TECHNIQUES IS NOT ALLOWED. REFER TO LIGO-E0900364
- 8. ALL PARTS SHALL BE MANUFACTURED IN ACCORDANCE WITH LIGO SPECIFICATION E0900364.
- 9. ALL MATERIAL IS TO BE VIRGIN MATERIAL (i.e. NO WELD REPAIRS, PLUGS OR RECYCLED MATERIAL). NO REPAIRS SHALL BE MADE UNLESS APPROVED IN ADVANCE, AND IN WRITING, BY LIGO LABORATORY. REFER TO LIGO-E0900364.

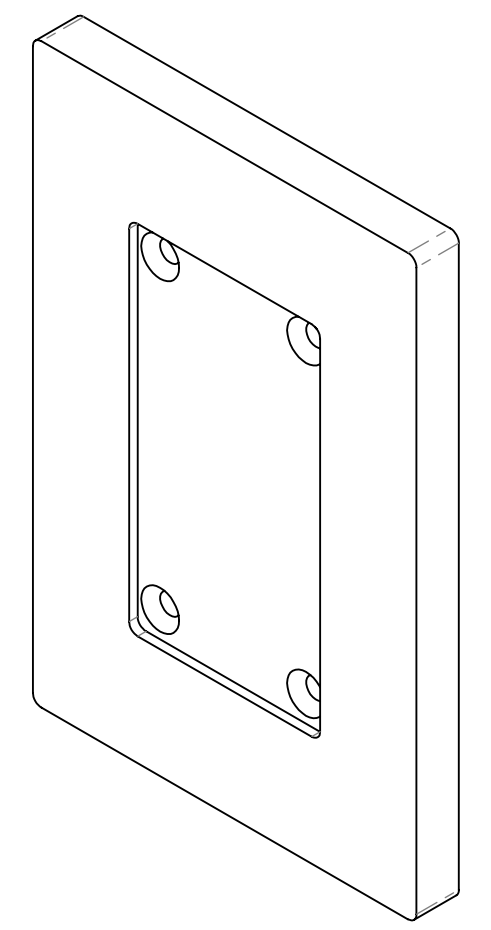
REV.	DATE	DCN #	DRAWING TREE #
v1	17-AUG-2012	-	-
v2	30-JAN-2013	E1300092-x0	E1300097-v1
-	-	-	-



4X ϕ .15 THRU ALL
 \sphericalangle ϕ .28 X 82°



DETAIL B
 SCALE 2 : 1



NOTES AND TOLERANCES: (UNLESS OTHERWISE SPECIFIED)	
DIMENSIONS ARE IN INCHES	
TOLERANCES: .XX ± .01 .XXX ± .005 ANGULAR ± 1.0°	
MATERIAL Polyetheretherketone (PEEK)	FINISH 125 μinch

CALIFORNIA INSTITUTE OF TECHNOLOGY MASSACHUSETTS INSTITUTE OF TECHNOLOGY	
SYSTEM ADVANCED LIGO	SUB-SYSTEM AOS
NEXT ASSY D1201065	

PART NAME BASE, αLIGO TCS CO2P PD PREAMP ASSY			
DESIGNER M. JACOBSON	DATE 08-AUG-12	SIZE B	DWG. NO. D1201142
DRAFTER M. JACOBSON	DATE 15-AUG-2012	SCALE 1:1	REV. v2
CHECKER B. ABBOTT	DATE 30-JAN-2013	PROJECTION 	SHEET 1 OF 1
APPROVAL HEPTONSTALL	DATE 29-JAN-2013		