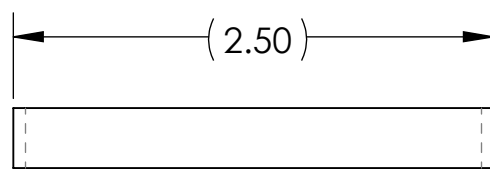


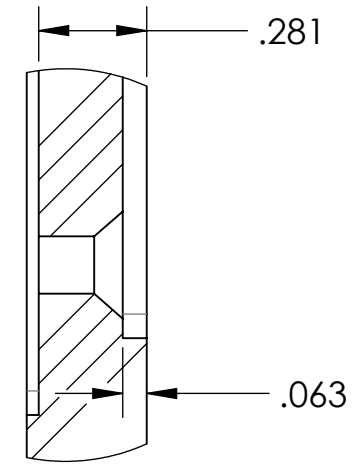
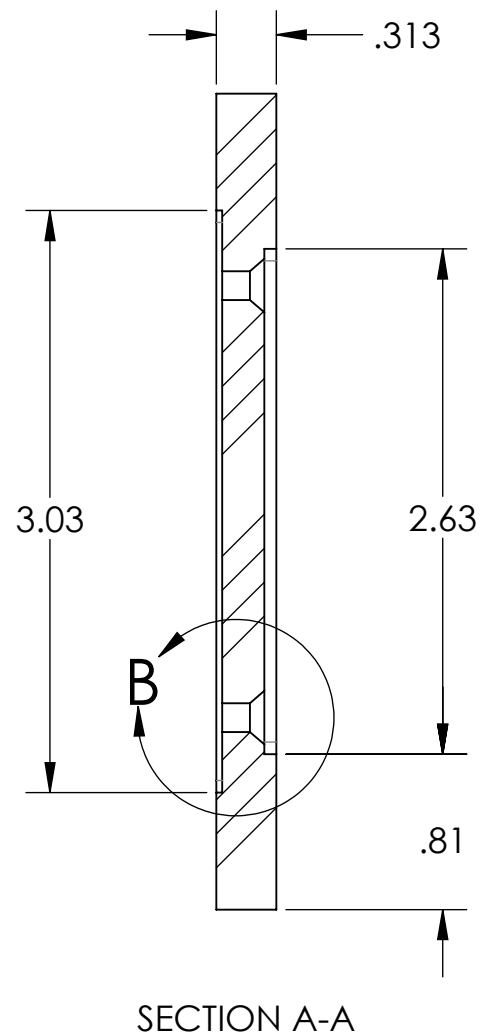
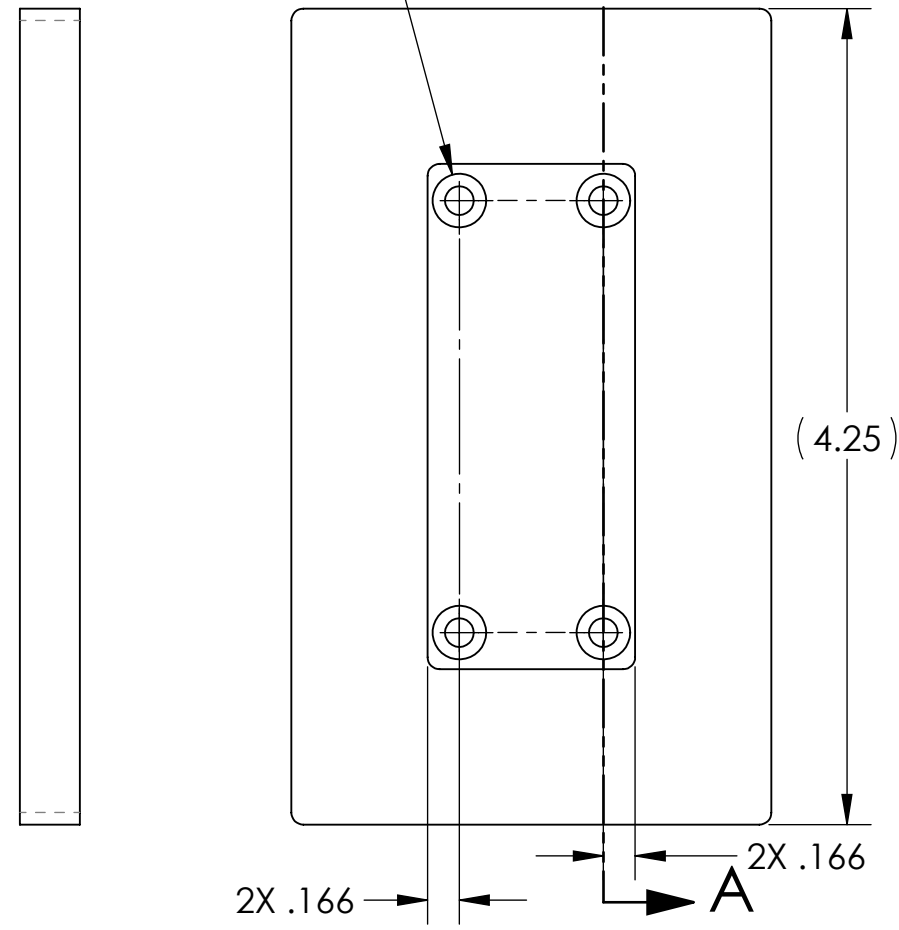
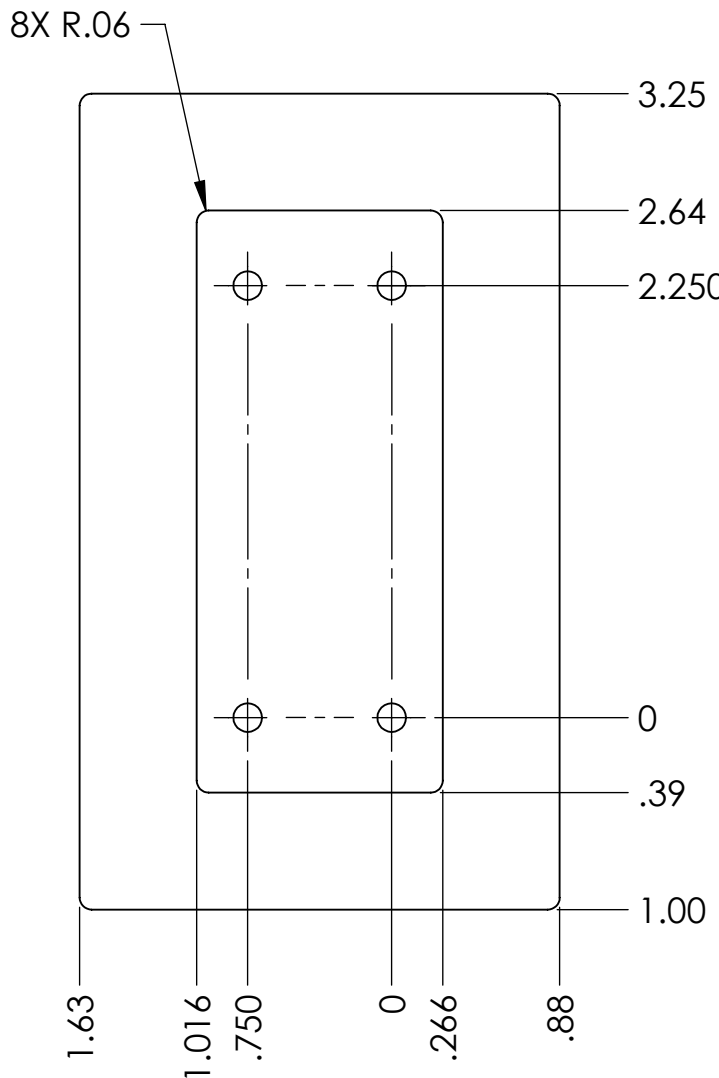
NOTES CONTINUED:
 5. SCRIBE, ENGRAVE (A VIBRATORY TOOL MAY BE USED), LASER MARK OR MECHANICALLY STAMP (NO INKS OR DYES) DRAWING PART NUMBER, REVISION (AND VARIANT OR "TYPE" IF APPLICABLE) ON NOTED SURFACE OF PART FOLLOWED ON THE NEXT LINE WITH A THREE DIGIT SERIAL NUMBER. SERIAL NUMBERS START AT 001 FOR THE FIRST ARTICLE AND PROCEED CONSECUTIVELY. USE MINIMUM 0.12" HIGH CHARACTERS, UNLESS THE SIZE OF THE PART DICTATES SMALLER CHARACTERS. EXAMPLE: DXXXXXX-VY, TYPE-XX, S/N XXX

REV.	DATE	DCN #	DRAWING TREE #
v1	17-AUG-2012	-	-
-	-	-	-
-	-	-	-

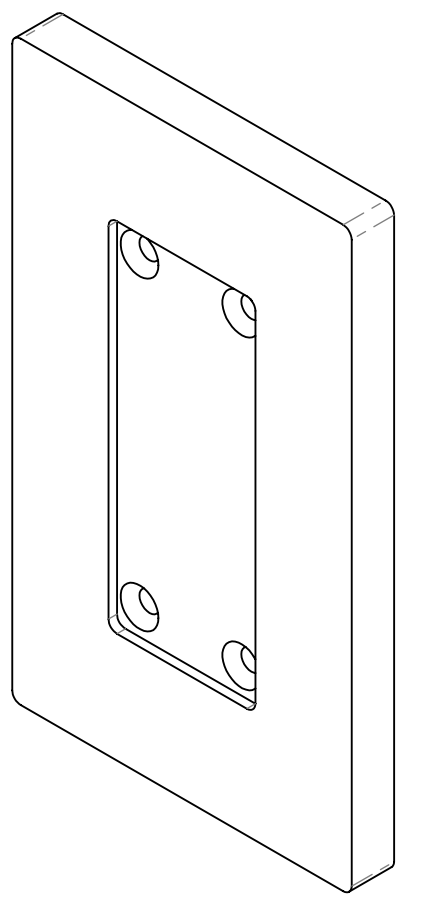
6. APPROXIMATE WEIGHT = 0.141 LB
7. MACHINE ALL SURFACES TO REMOVE OXIDES AND MILL FINISH. USE OF ABRASIVE REMOVAL TECHNIQUES IS NOT ALLOWED. REFER TO LIGO-E0900364
8. ALL PARTS SHALL BE MANUFACTURED IN ACCORDANCE WITH LIGO SPECIFICATION E0900364.
9. ALL MATERIAL IS TO BE VIRGIN MATERIAL (i.e. NO WELD REPAIRS, PLUGS OR RECYCLED MATERIAL). NO REPAIRS SHALL BE MADE UNLESS APPROVED IN ADVANCE, AND IN WRITING, BY LIGO LABORATORY. REFER TO LIGO-E0900364.



4X ϕ .15 THRU ALL
 \sphericalangle ϕ .28 X 82°



DETAIL B
 SCALE 2 : 1



D1201142_BASE, αLIGO TCS CO2 LASER PD PREAMP ASSEMBLY, PART PDM REV: X-005, DRAWING PDM REV: X-003

NOTES AND TOLERANCES: (UNLESS OTHERWISE SPECIFIED)	
DIMENSIONS ARE IN INCHES	
TOLERANCES: .XX ± .01 .XXX ± .005 ANGULAR ± 1.0°	
MATERIAL Polyetheretherketone (PEEK)	FINISH 125 μinch

CALIFORNIA INSTITUTE OF TECHNOLOGY MASSACHUSETTS INSTITUTE OF TECHNOLOGY	PART NAME BASE, αLIGO TCS CO2P PD PREAMP ASSY	
	SYSTEM ADVANCED LIGO	SUB-SYSTEM AOS
	NEXT ASSY D1201065	

DESIGNER M. JACOBSON	08-AUG-12	SIZE B	DWG. NO. D1201142	REV. v1
DRAFTER M. JACOBSON	15-AUG-12	SCALE: 1:1		SHEET 1 OF 1
CHECKER B. ABBOTT	16-AUG-12	PROJECTION:		
APPROVAL HEPTONSTALL	17-AUG-12			