

NOTES CONTINUED:
 5. SCRIBE, ENGRAVE (A VIBRATORY TOOL MAY BE USED), LASER MARK OR MECHANICALLY STAMP (NO INKS OR DYES) DRAWING PART NUMBER, REVISION (AND VARIANT OR 'TYPE' IF APPLICABLE) ON NOTED SURFACE OF PART FOLLOWED ON THE NEXT LINE WITH A THREE DIGIT SERIAL NUMBER. SERIAL NUMBERS START AT 001 FOR THE FIRST ARTICLE AND PROCEED CONSECUTIVELY. USE MINIMUM 0.12" HIGH CHARACTERS, UNLESS THE SIZE OF THE PART DICTATES SMALLER CHARACTERS. EXAMPLE: DXXXXXX-VY, TYPE-XX, S/N XXX

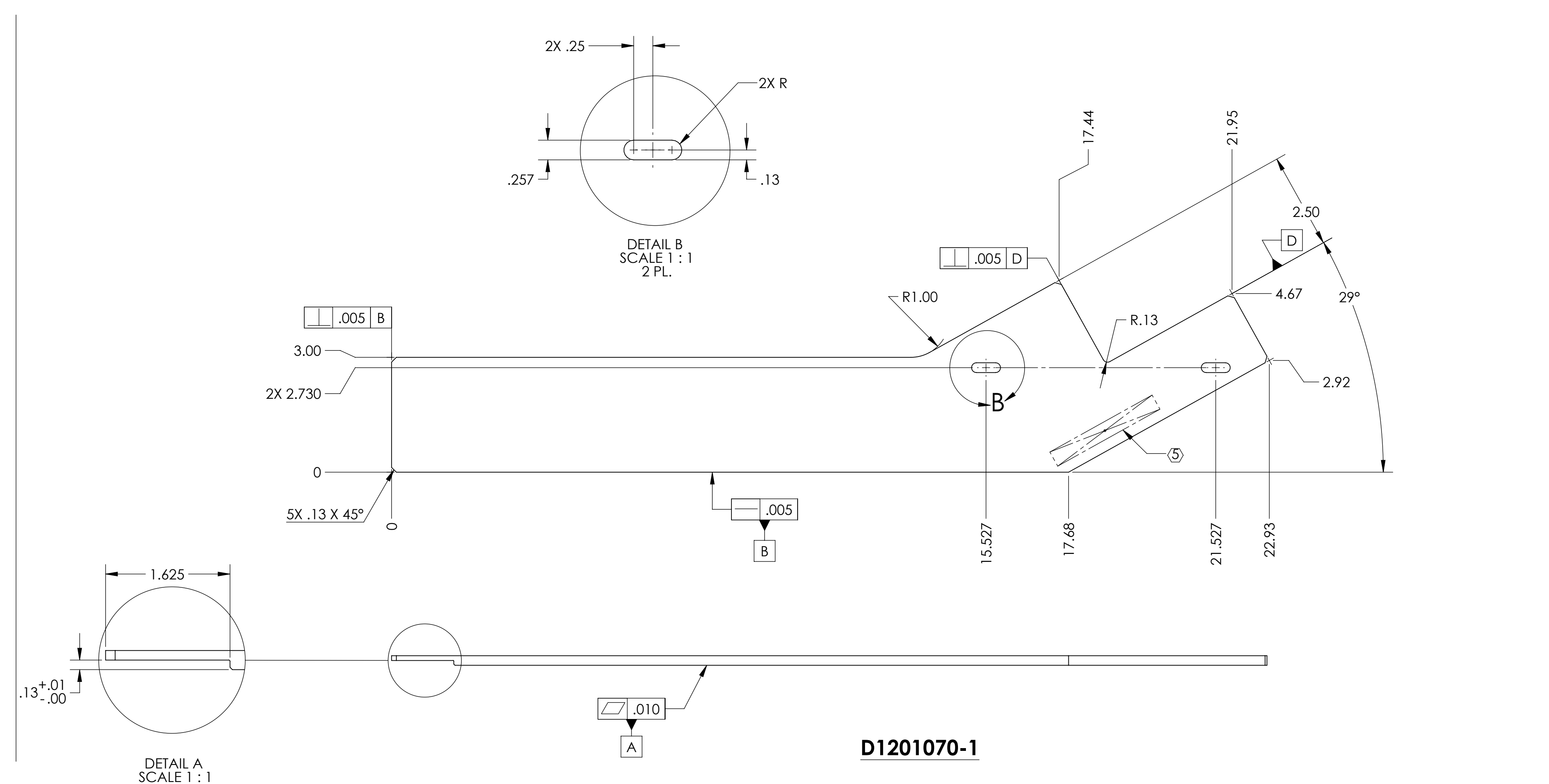
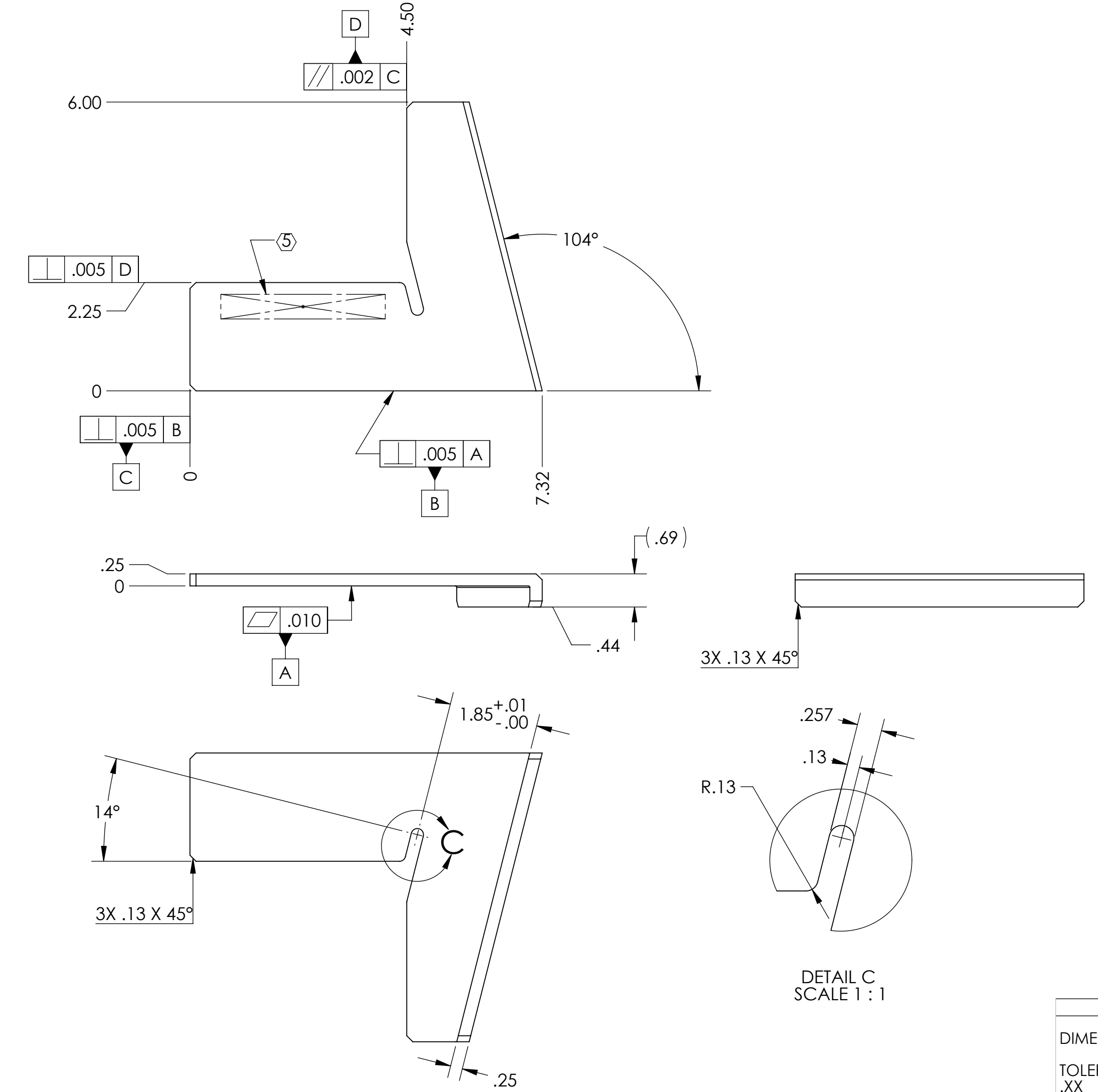
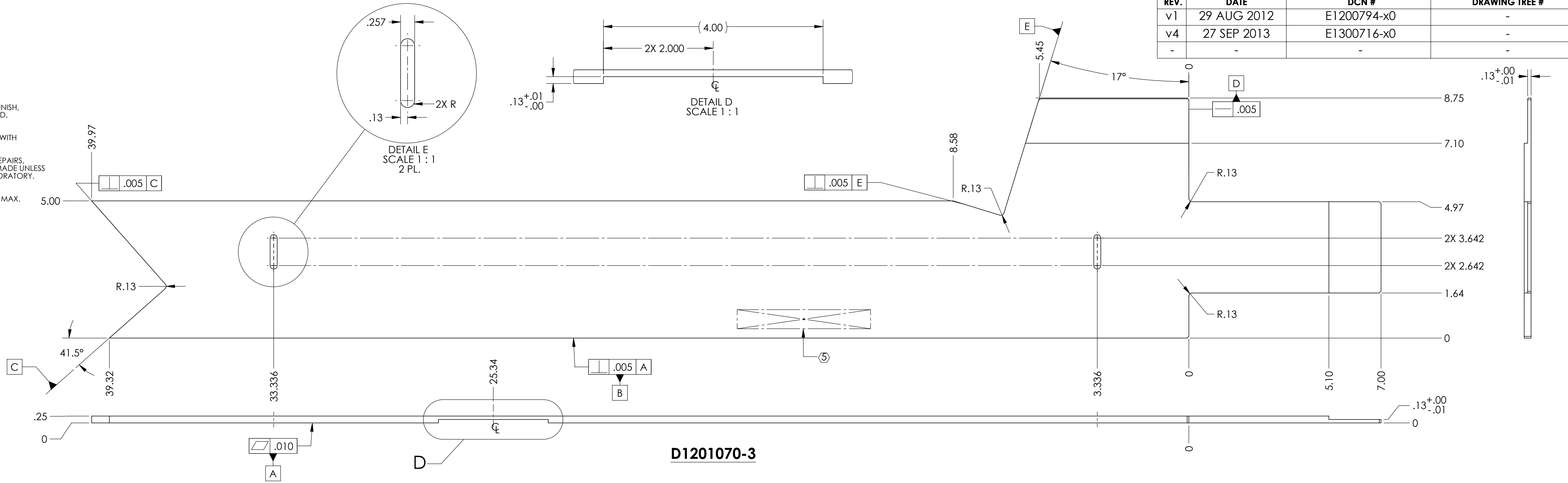
6. MACHINE ALL SURFACES TO REMOVE OXIDES AND MILL FINISH. USE OF ABRASIVE REMOVAL TECHNIQUES IS NOT ALLOWED. REFER TO LIGO-E0900364.

7. ALL PARTS SHALL BE MANUFACTURED IN ACCORDANCE WITH LIGO SPECIFICATION E0900364.

8. ALL MATERIAL IS TO BE VIRGIN MATERIAL (i.e. NO WELD REPAIRS, PLUGS OR RECYCLED MATERIAL). NO REPAIRS SHALL BE MADE UNLESS APPROVED IN ADVANCE, AND IN WRITING, BY LIGO LABORATORY. REFER TO LIGO-E0900364.

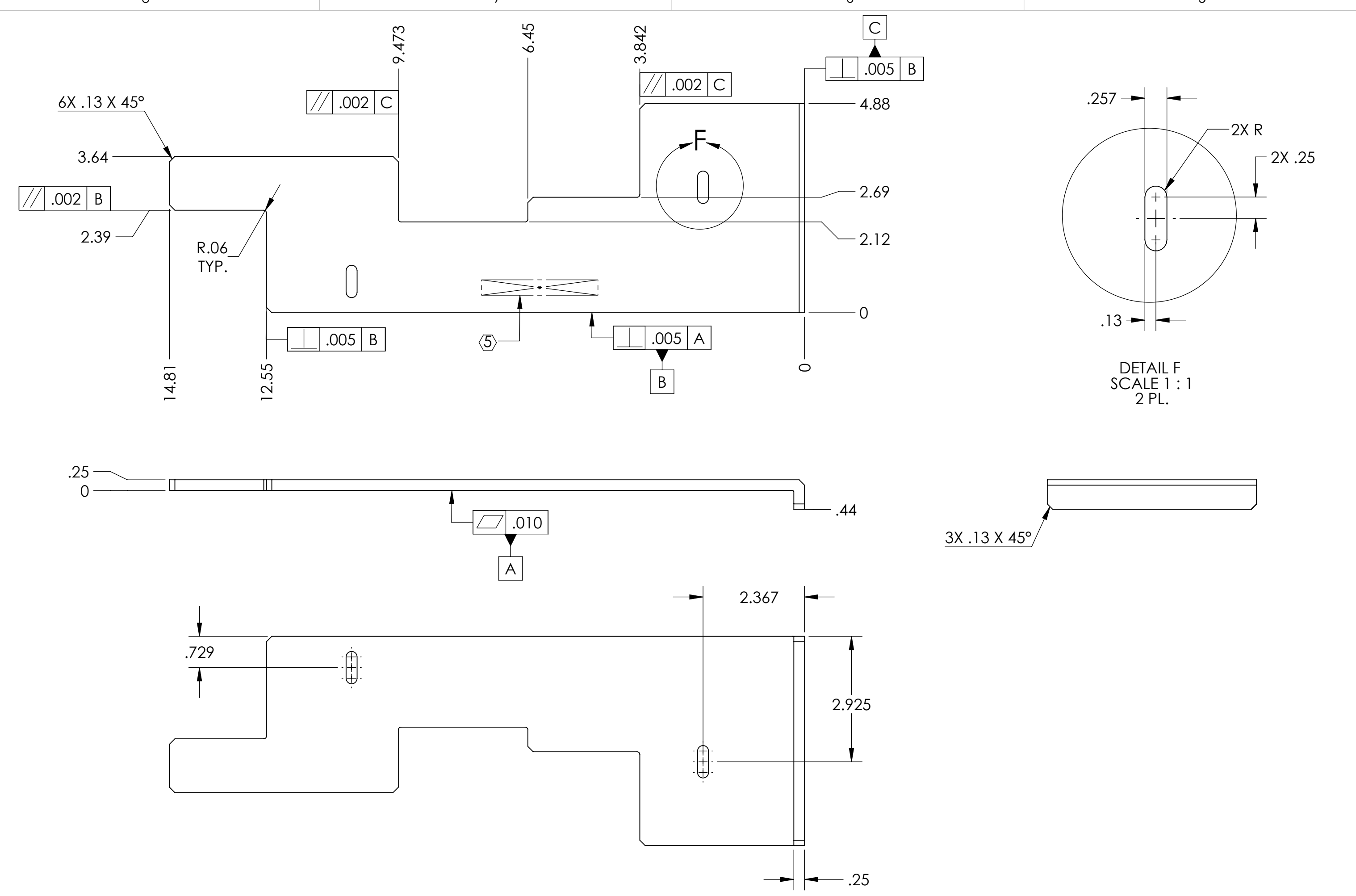
9. UNLESS OTHERWISE SPECIFIED, MACHINE FILLET RADII: .015 MAX.

REV.	DATE	DCN #	DRAWING TREE #
v1	29 AUG 2012	E1200794-x0	-
v4	27 SEP 2013	E1300716-x0	-
-	-	-	-

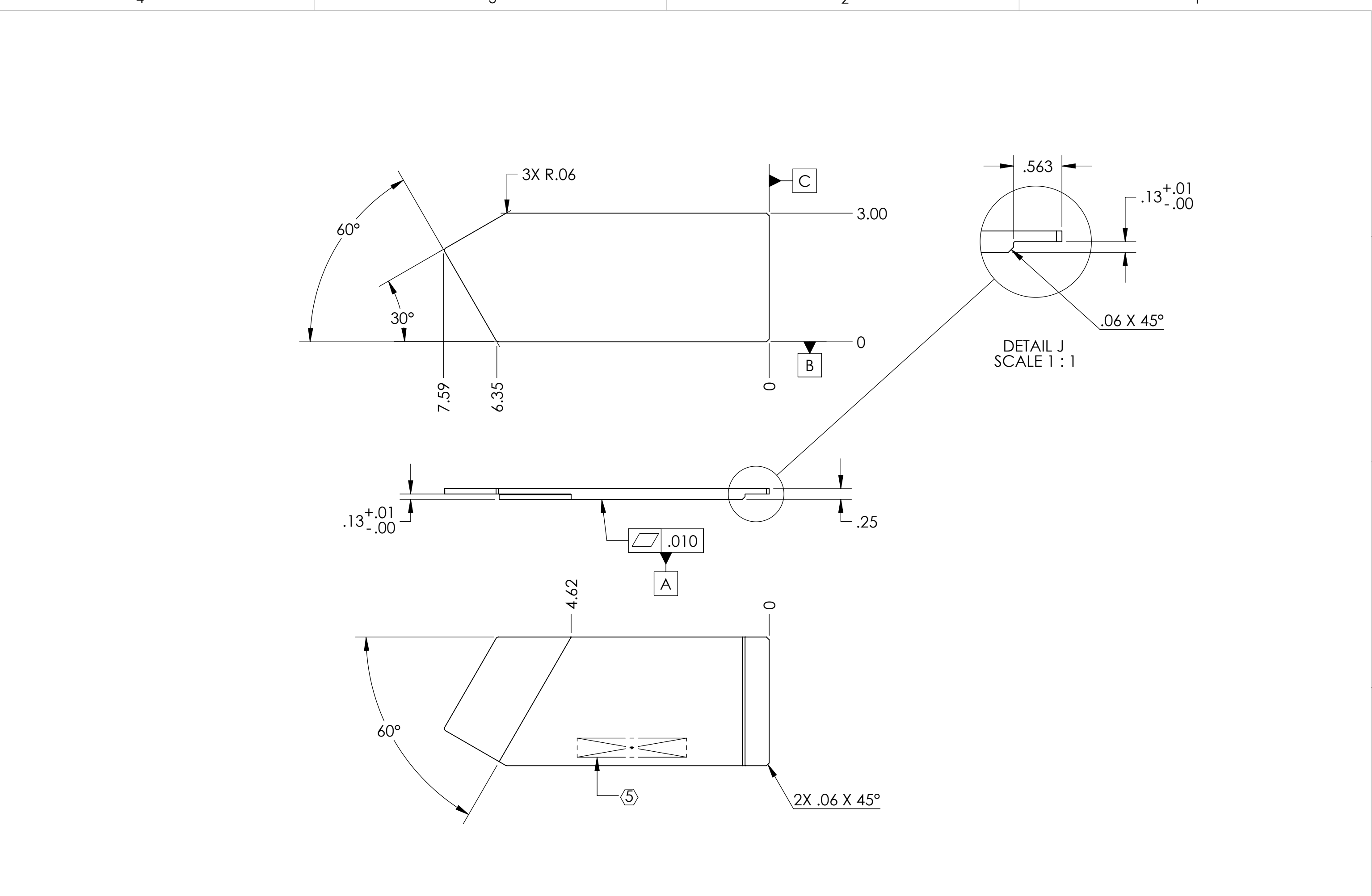


NOTES AND TOLERANCES: (UNLESS OTHERWISE SPECIFIED)				LIGO CALIFORNIA INSTITUTE OF TECHNOLOGY MASSACHUSETTS INSTITUTE OF TECHNOLOGY		PART NAME	
1. INTERPRET DRAWING PER ASME Y14.5-1994. 2. REMOVE ALL SHARP EDGES, .005-.015, FOR MACHINED PARTS. ROUND ALL EDGES APPROXIMATELY R.02. 3. DO NOT SCALE FROM DRAWING. 4. ALL MACHINING FLUIDS MUST BE FULLY SYNTHETIC, FULLY WATER SOLUBLE AND FREE OF SULFUR, SILICONE, AND CHLORINE.				ADVANCED LIGO		ALIGO, HAM4, TCS HWS, INSTALLATION PLATE KIT	
DIMENSIONS ARE IN INCHES TOLERANCES: .XX ± .01 .XXX ± .005 ANGULAR ± 1.0°				MATERIAL: 6061-T6 Al FINISH: 63 μinch		DESIGNER: M. JACOBSON DRAFTER: E.SANCHEZ CHECKER: M. JACOBSON APPROVAL: A. BROOKS	
				SYSTEM: ADVANCED LIGO NEXT ASSY: D1201098		SUB-SYSTEM: TCS SIZE: D DWG. NO.: D1201070 SCALE: 1:2 PROJECTION:	
						DATE: 29 JUL 2012 DATE: 29 AUG 2012 DATE: 07 FEB 2013 DATE: 07 FEB 2013	
						SHEET 1 OF 5	

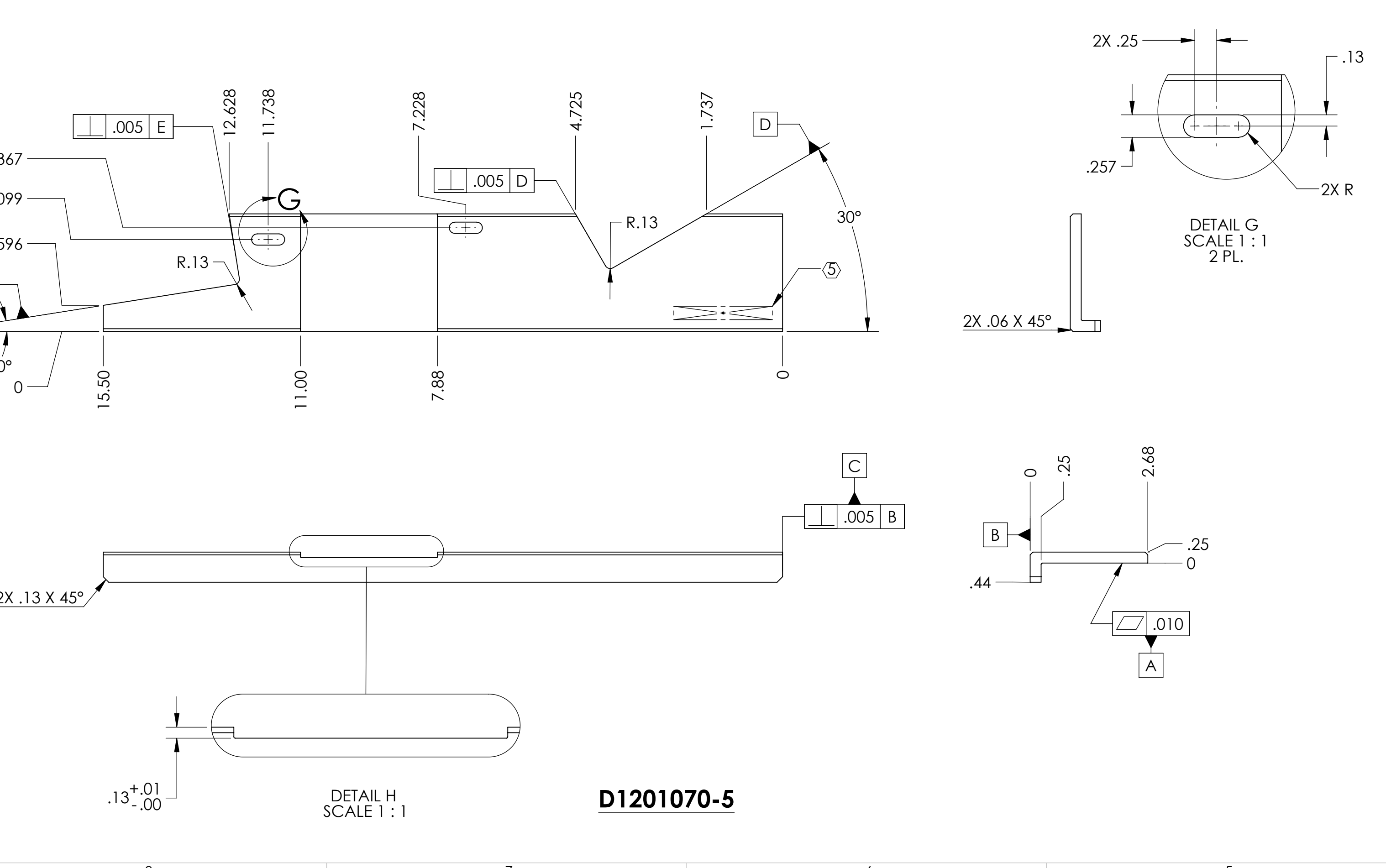
D1201070-010, HAM4, TCS HWS, INSTALLATION PLATE KIT, PART PDM REV: X018, DRAWING PDM REV: X015



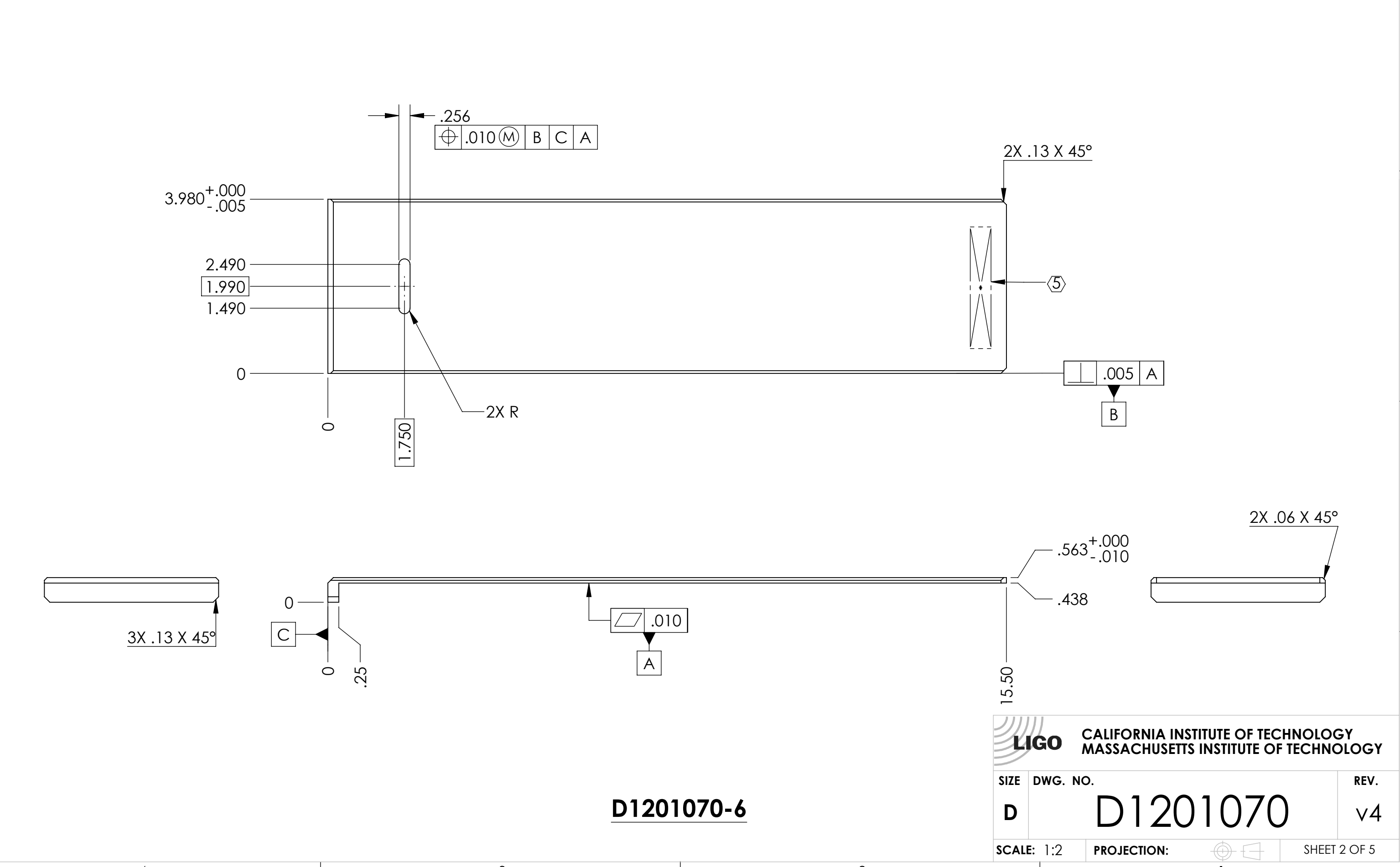
D1201070-4



D1201070-7



D1201070-5



D1201070-6

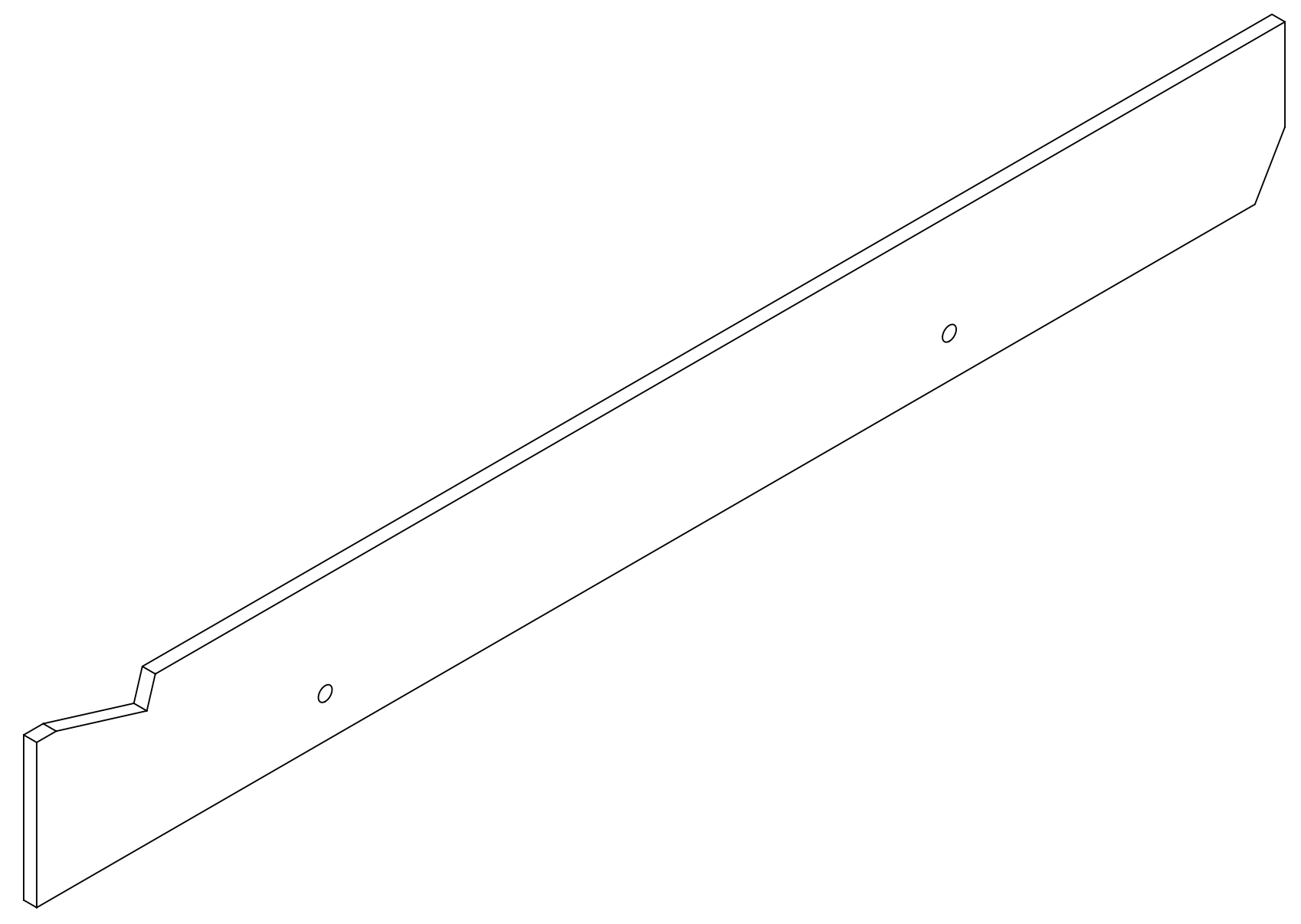
LIGO CALIFORNIA INSTITUTE OF TECHNOLOGY MASSACHUSETTS INSTITUTE OF TECHNOLOGY

SIZE	DWG. NO.	REV.
D	D1201070	v4
SCALE: 1:2	PROJECTION:	SHEET 2 OF 5

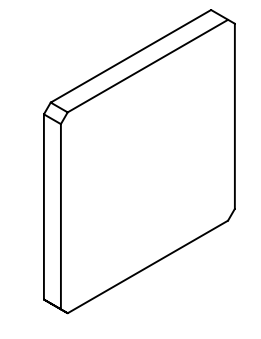
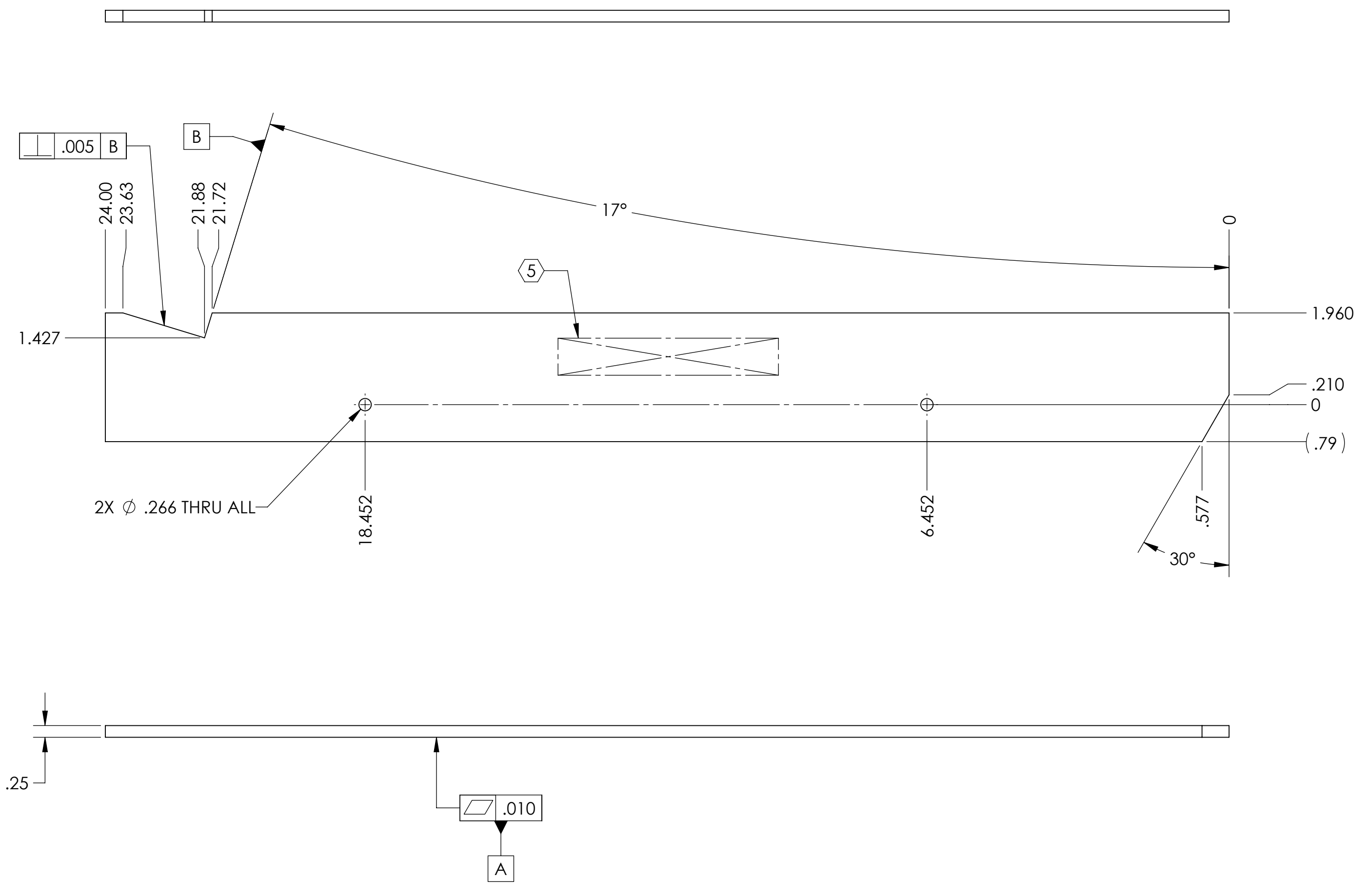
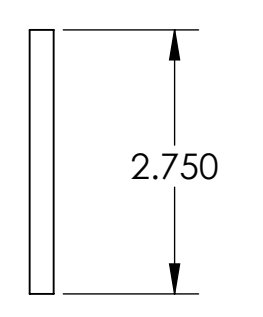
D1201070-0100_HANM4_TCSHWS_INSTALLATION_PLATE_V01_P01M_REV_X01B_DRAWING_PDM_REV_X01S

8 7 6 5 4 3 2 1

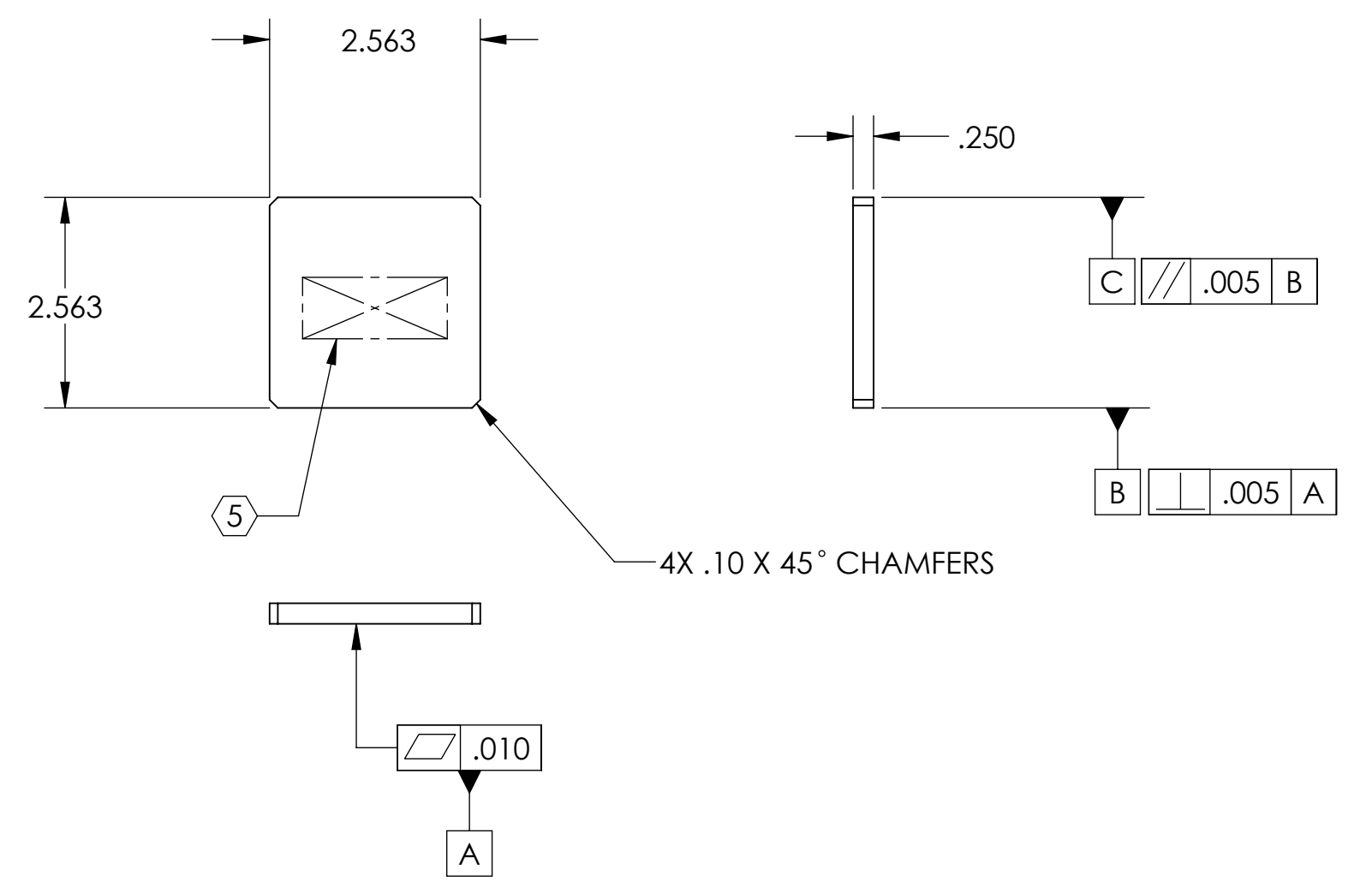
H G F E D C B A



D1201070-8



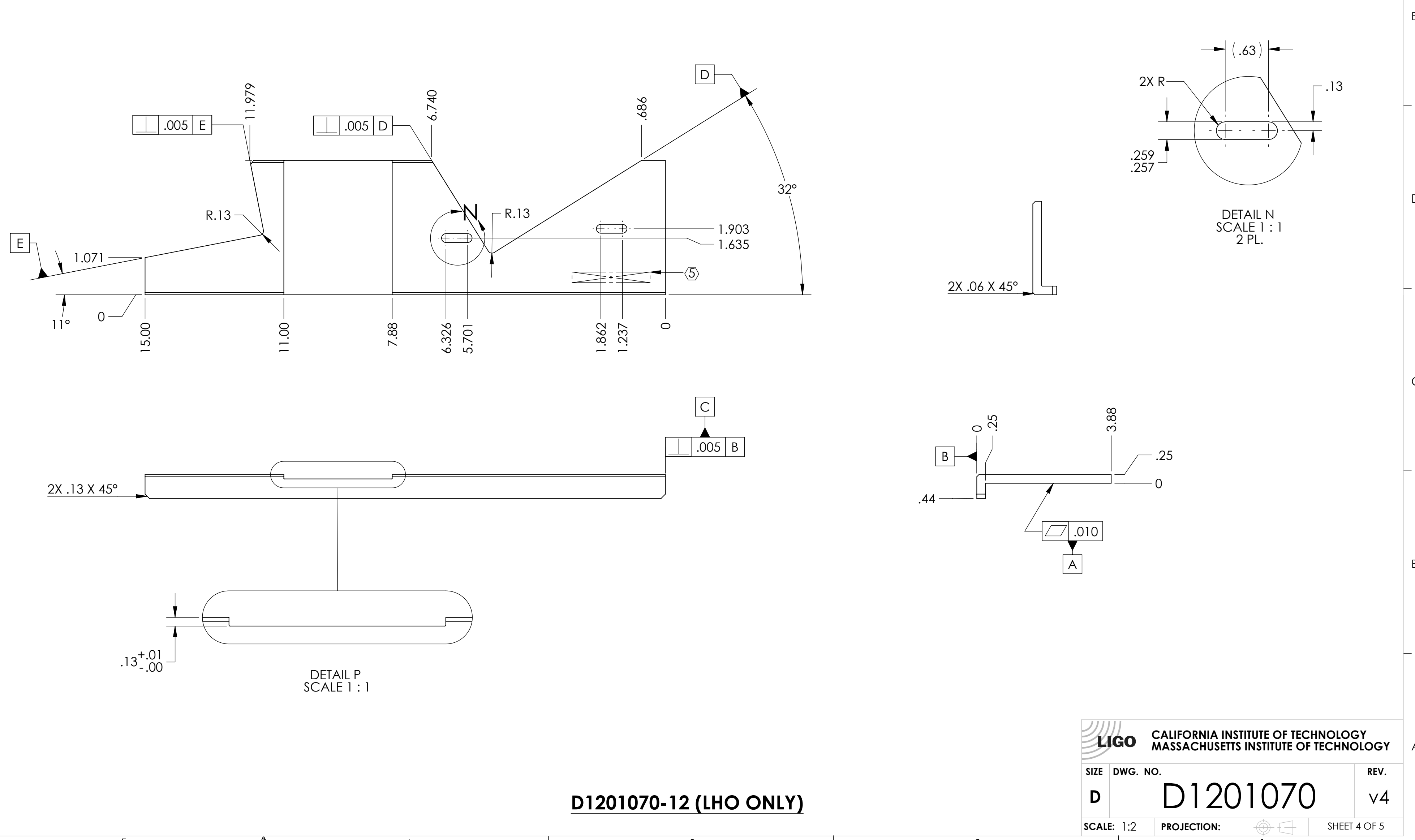
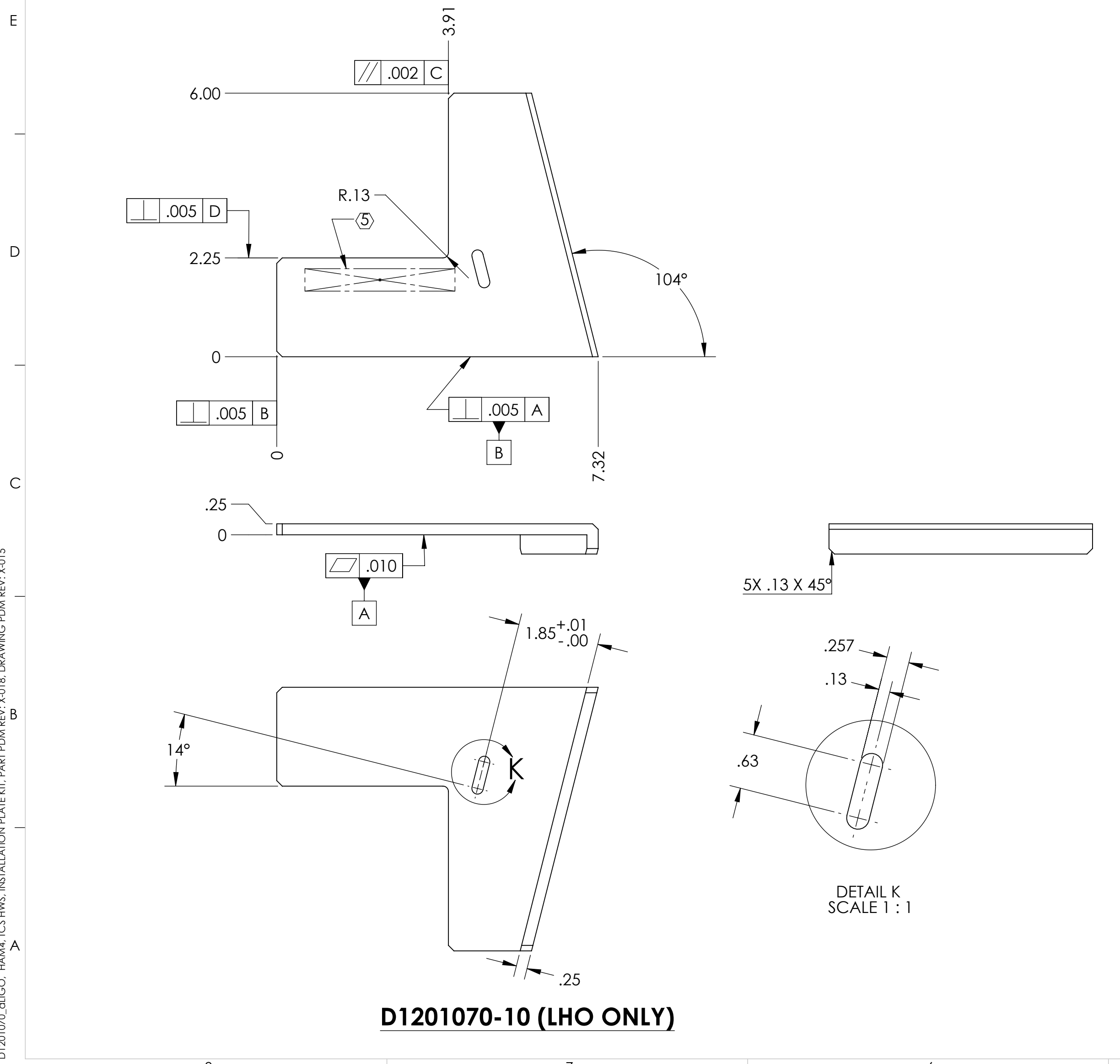
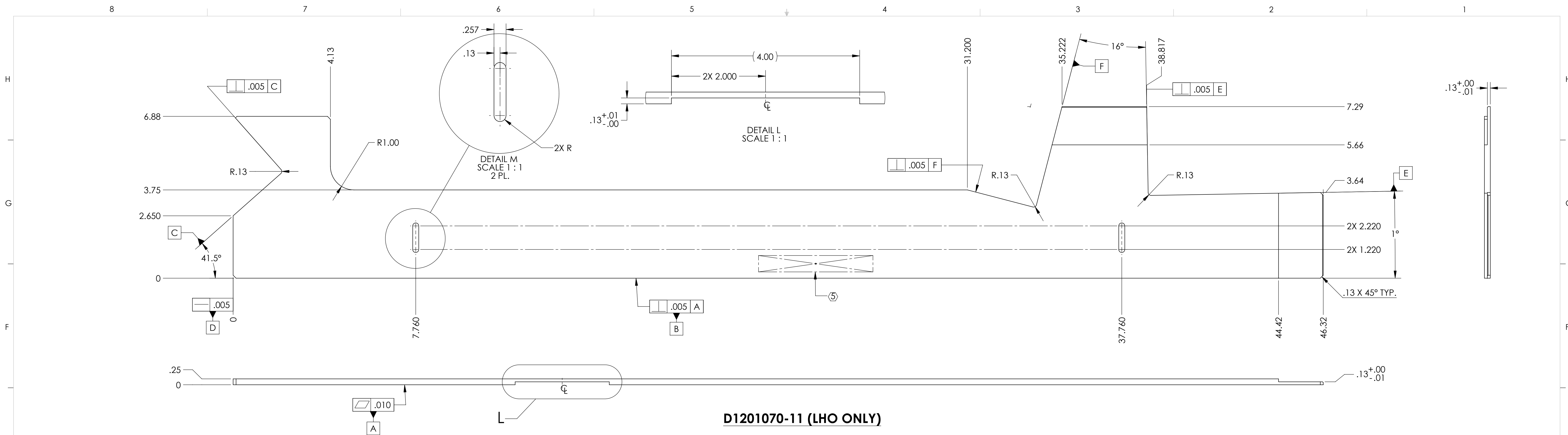
D1201070-9



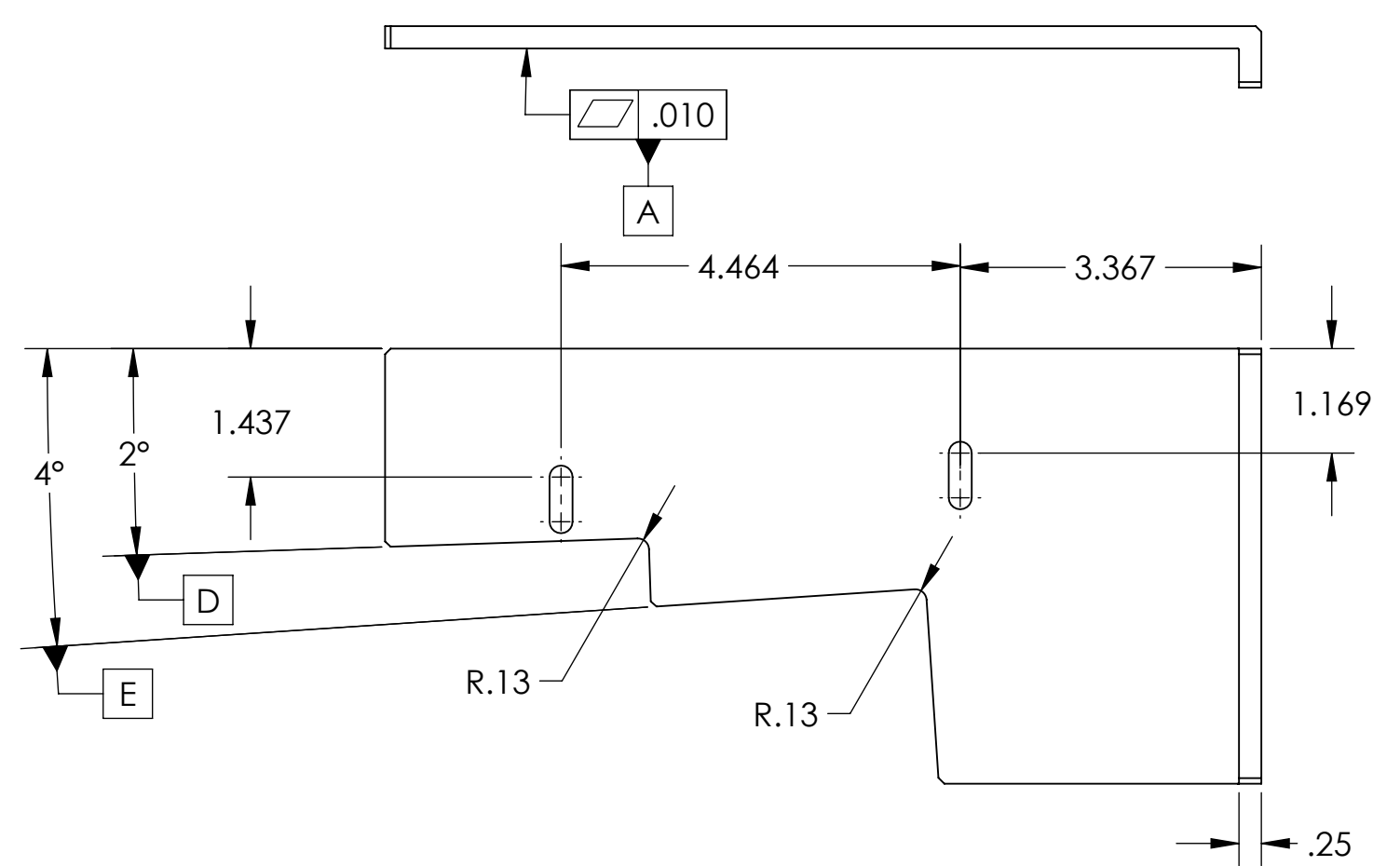
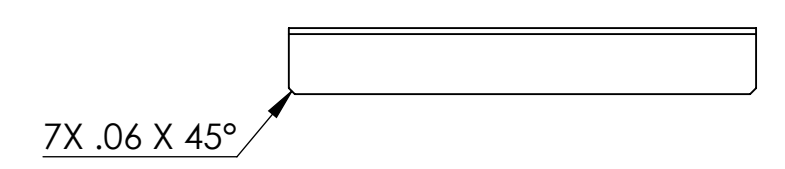
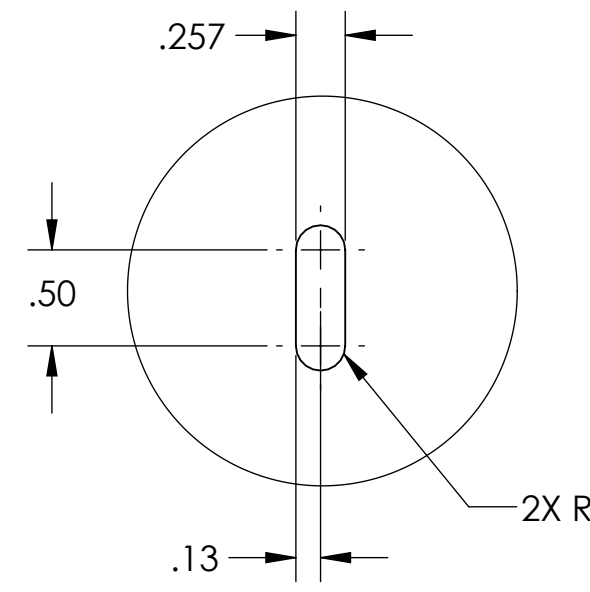
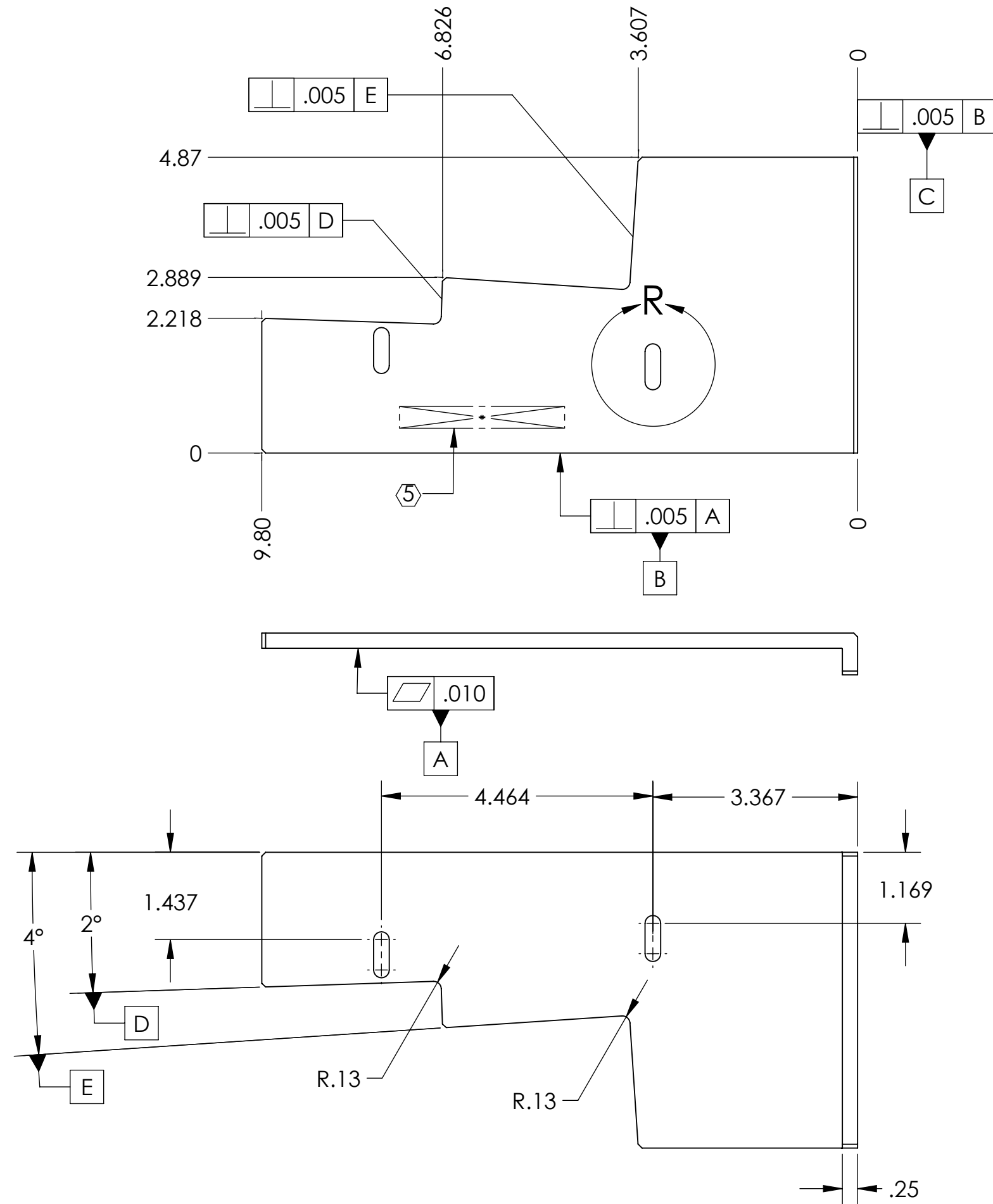
		CALIFORNIA INSTITUTE OF TECHNOLOGY MASSACHUSETTS INSTITUTE OF TECHNOLOGY	
SIZE	DWG. NO.	REV.	
D	D1201070	v4	
SCALE: 1:2	PROJECTION:	SHEET 3 OF 5	

D:\201070.dwg, HAAM4, TCS.HWS, INSTALLATION PLATE KIT, PART PDM REV, X.018, DRAWING PDM REV, X.015

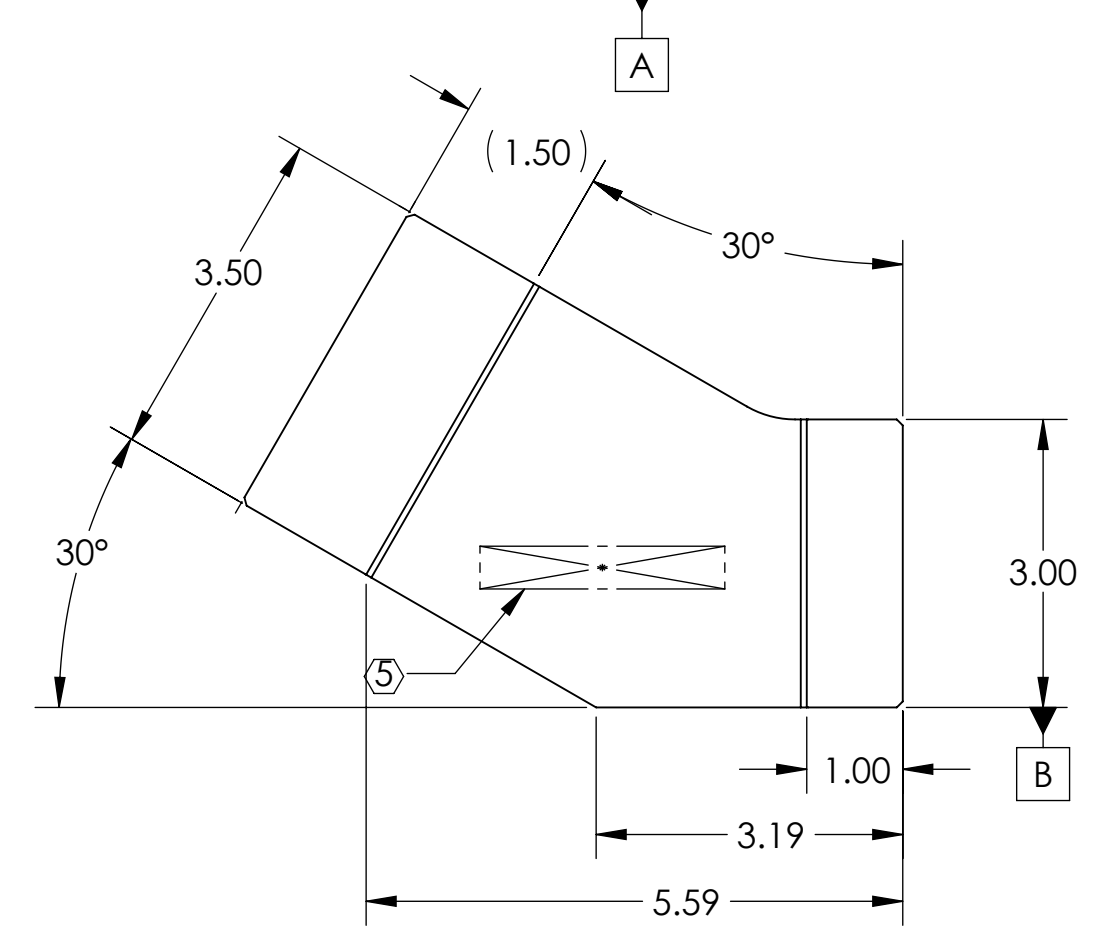
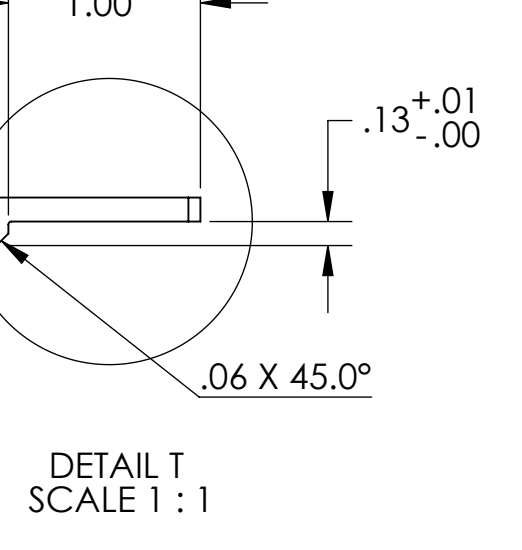
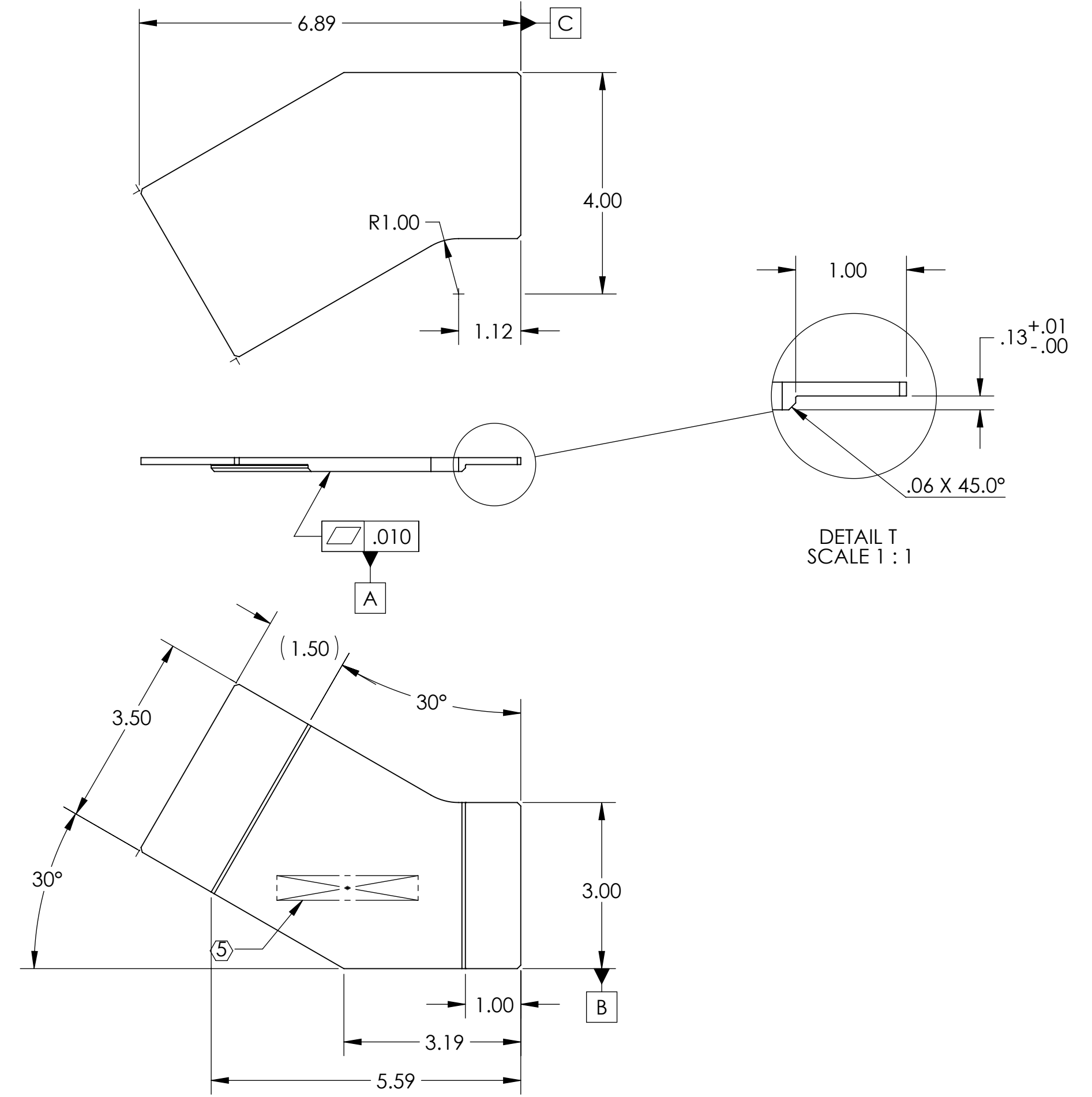
8 7 6 5 4 3 2 1



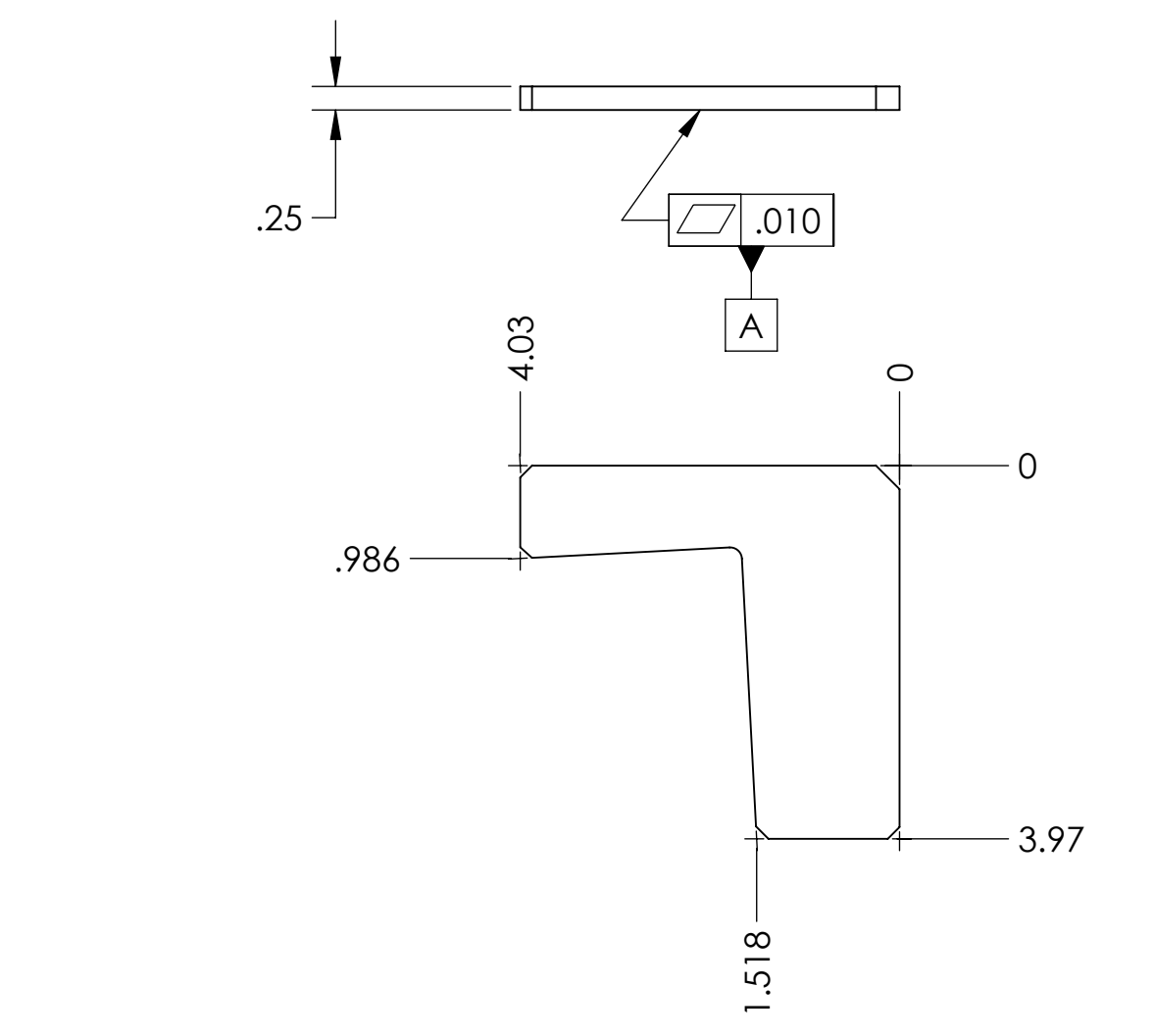
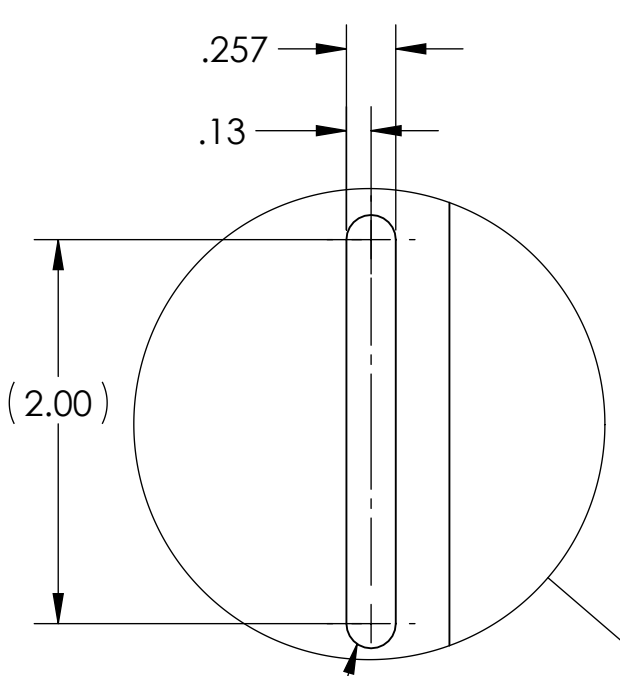
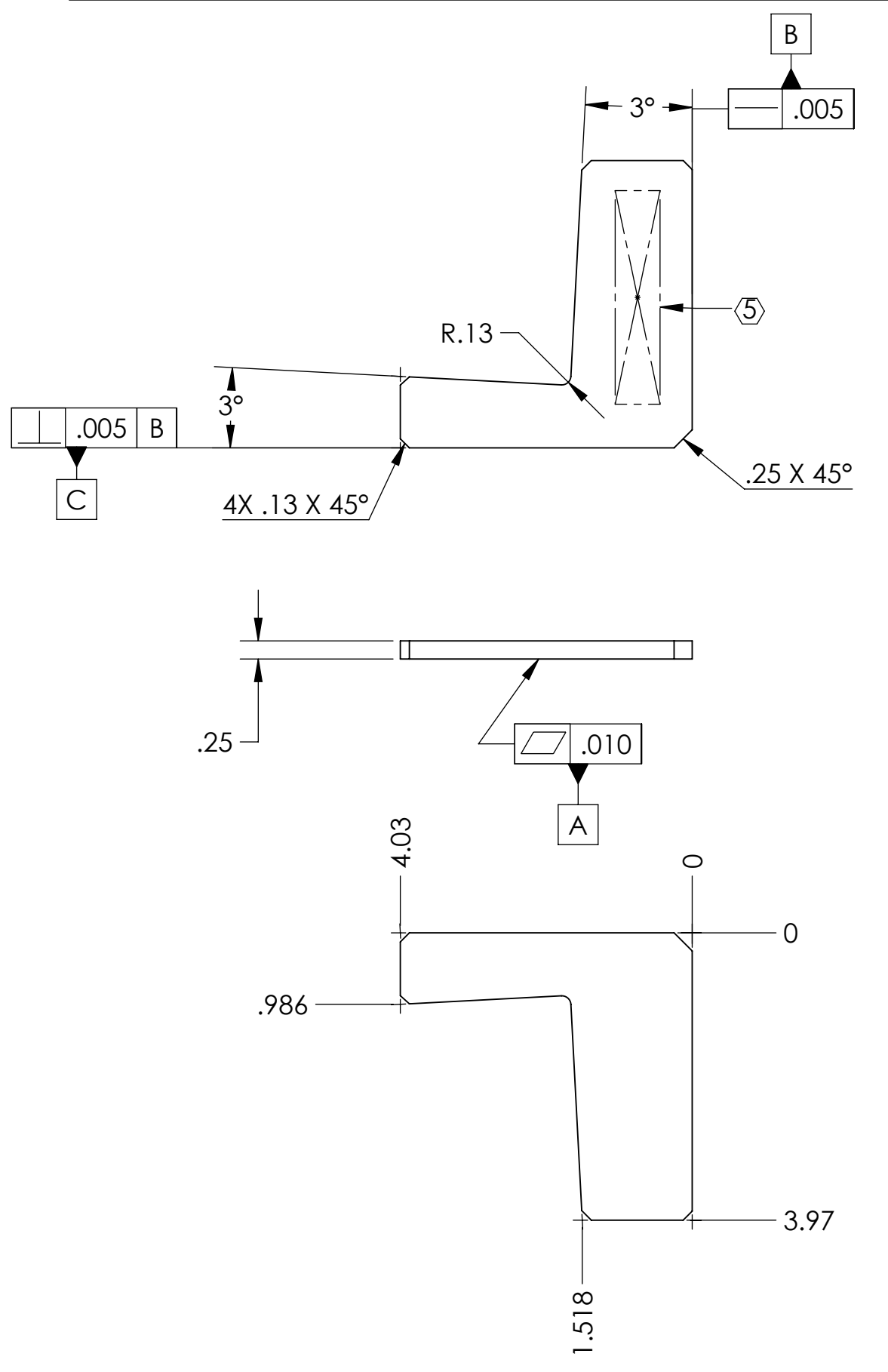
D1201070-01.GCO_HANM4_TCS.HWS_INSTALLATION PLATE KIT_PART FDM REV. X.018 DRAWING FDM REV. X.015



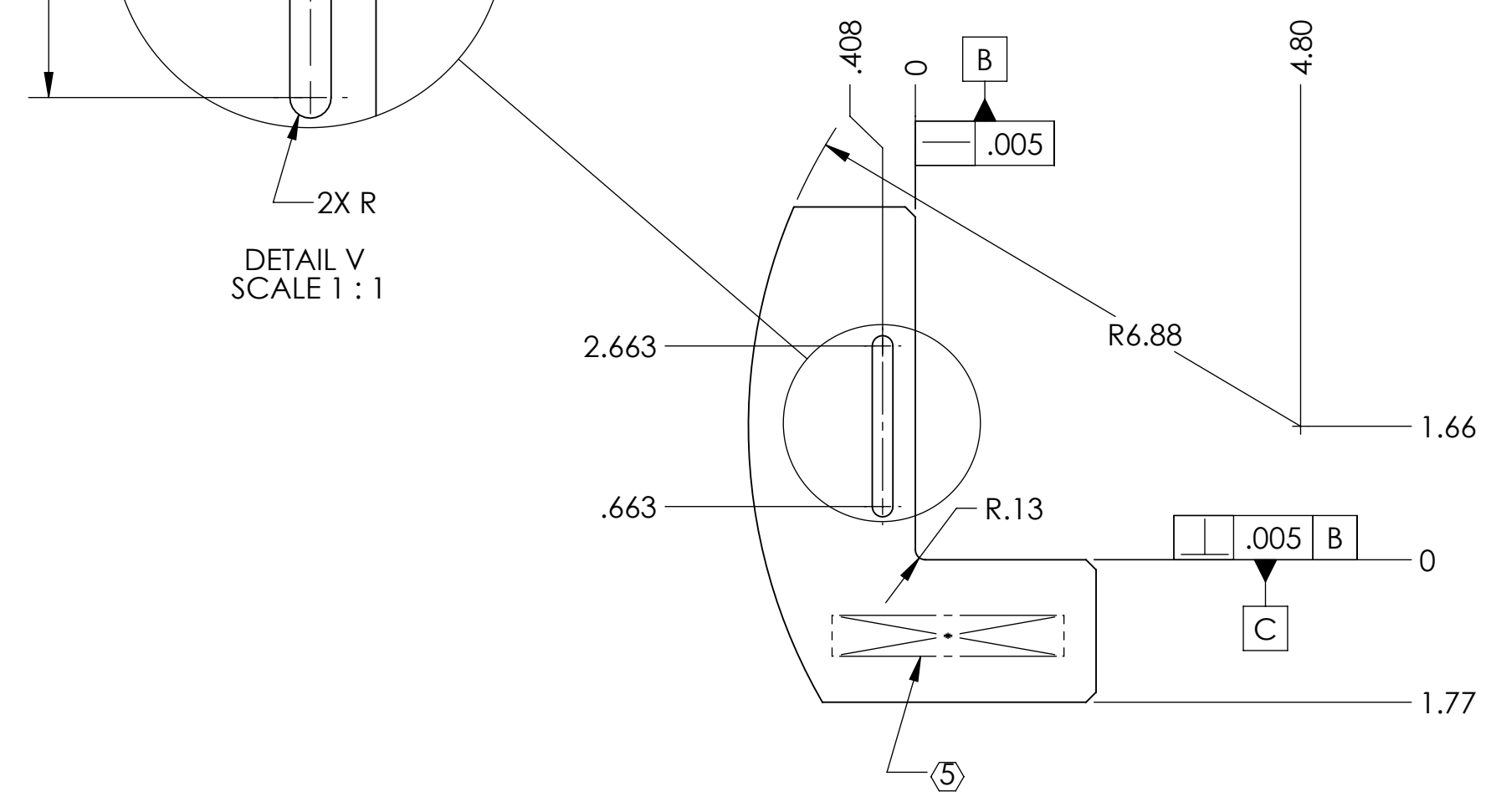
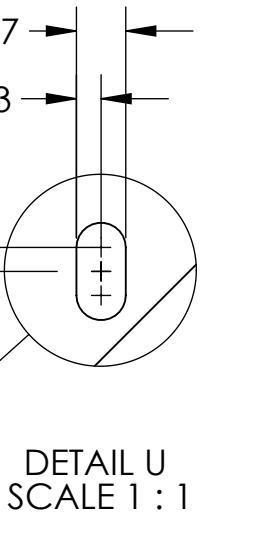
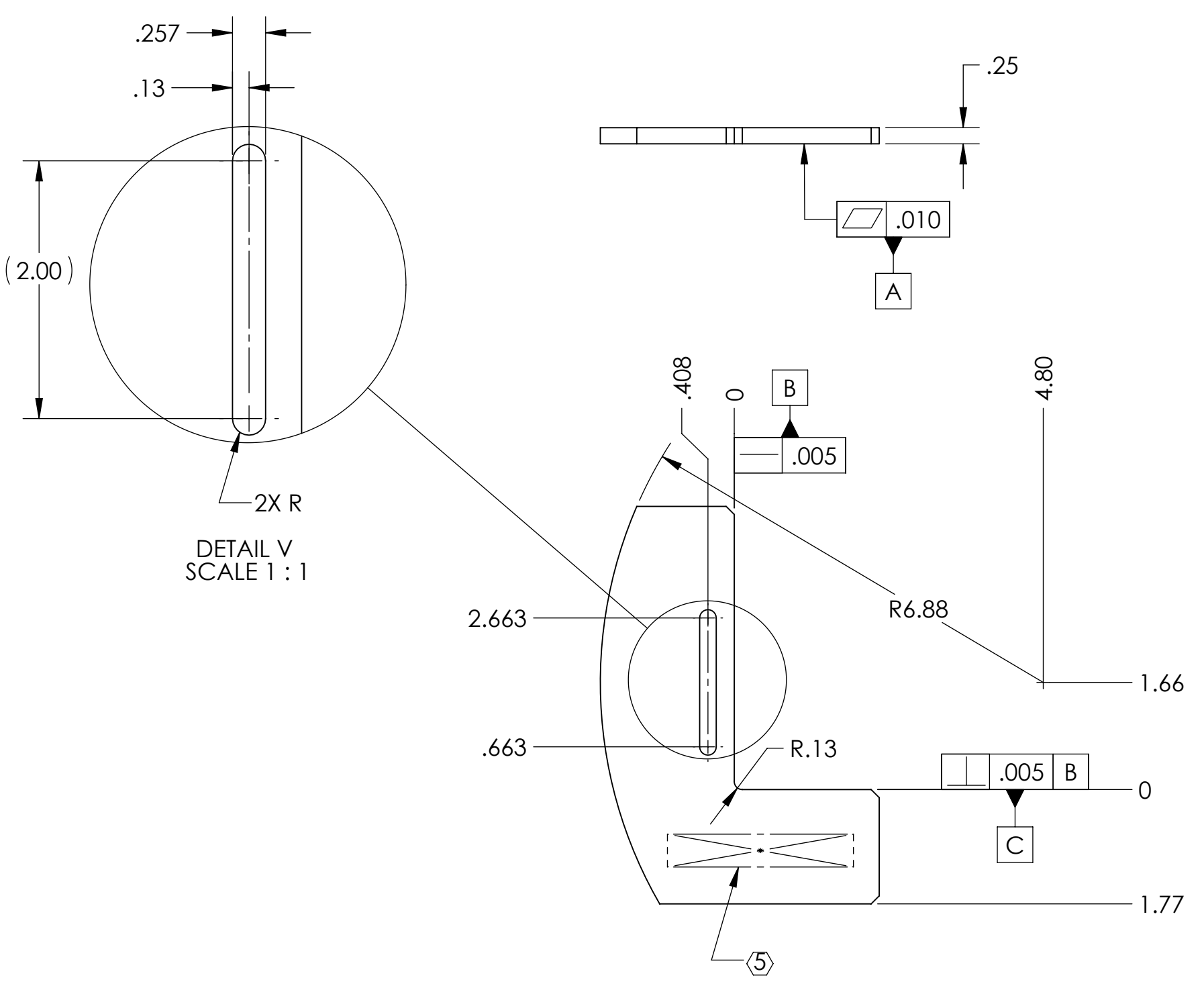
D1201070-15 (LHO ONLY)



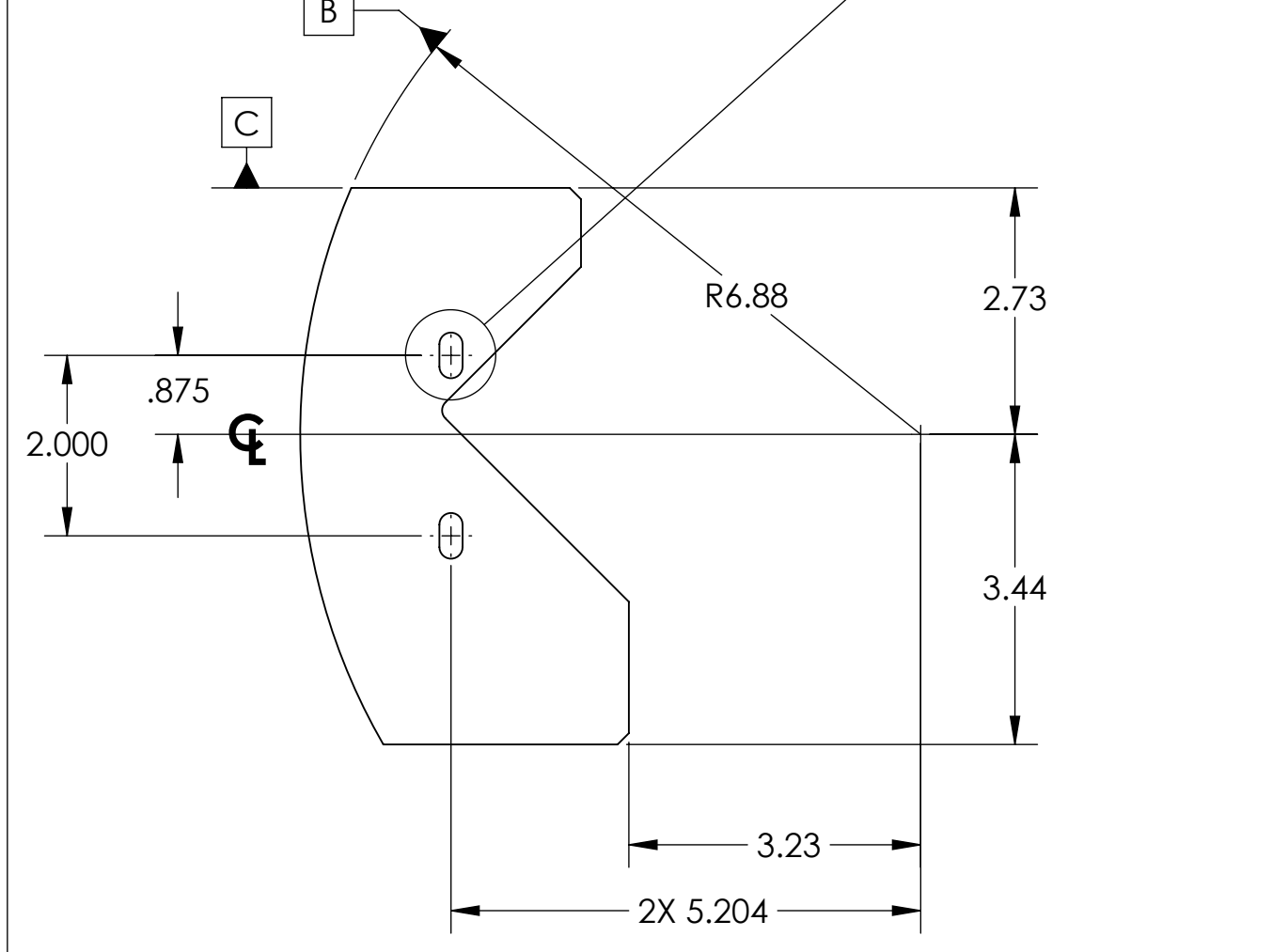
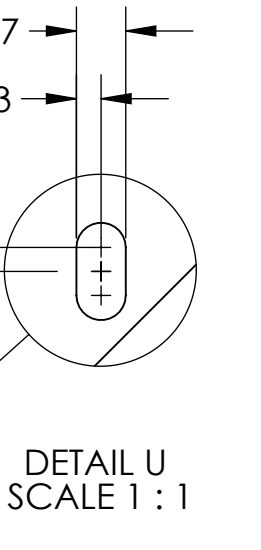
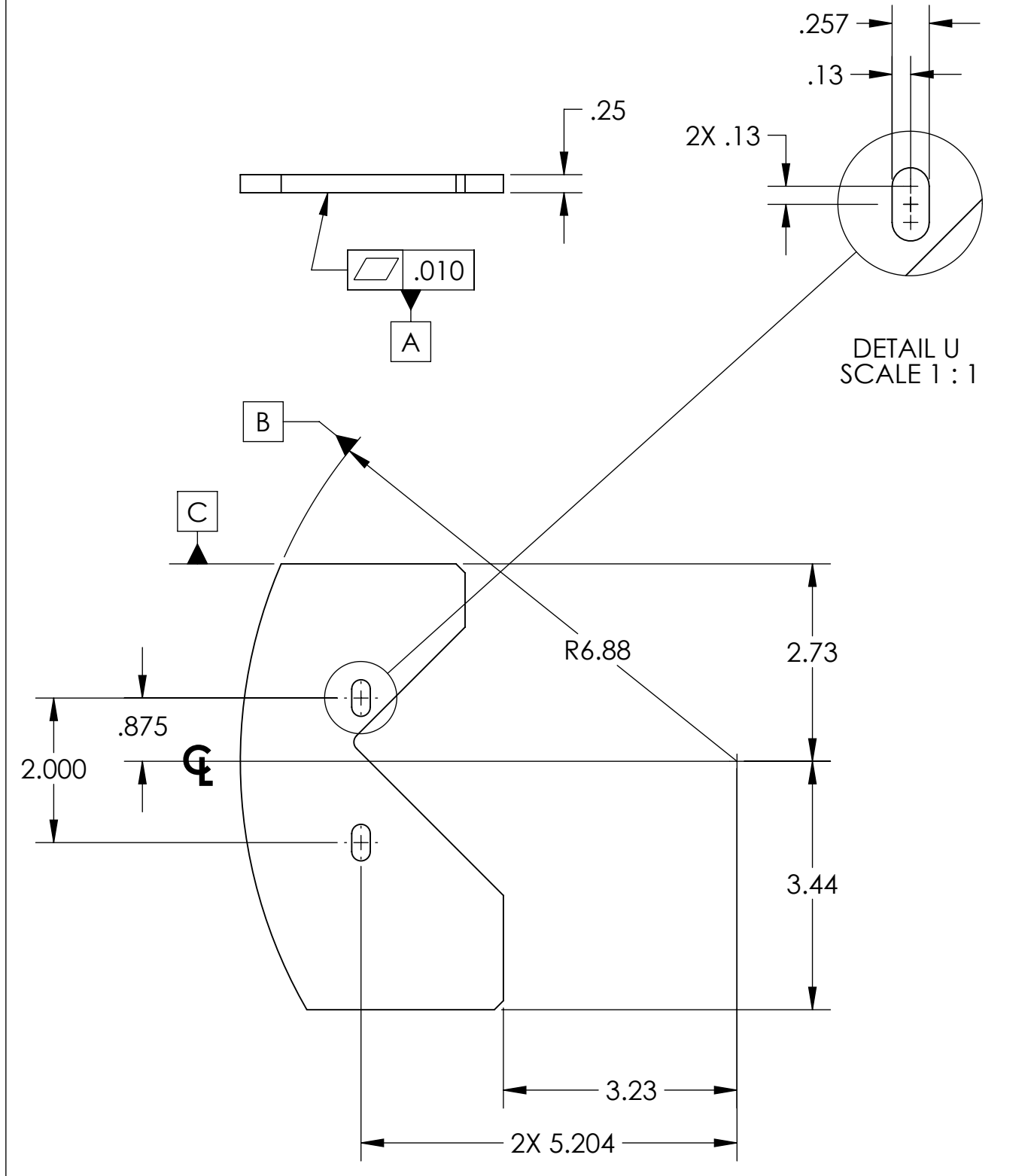
D1201070-13 (LHO ONLY)



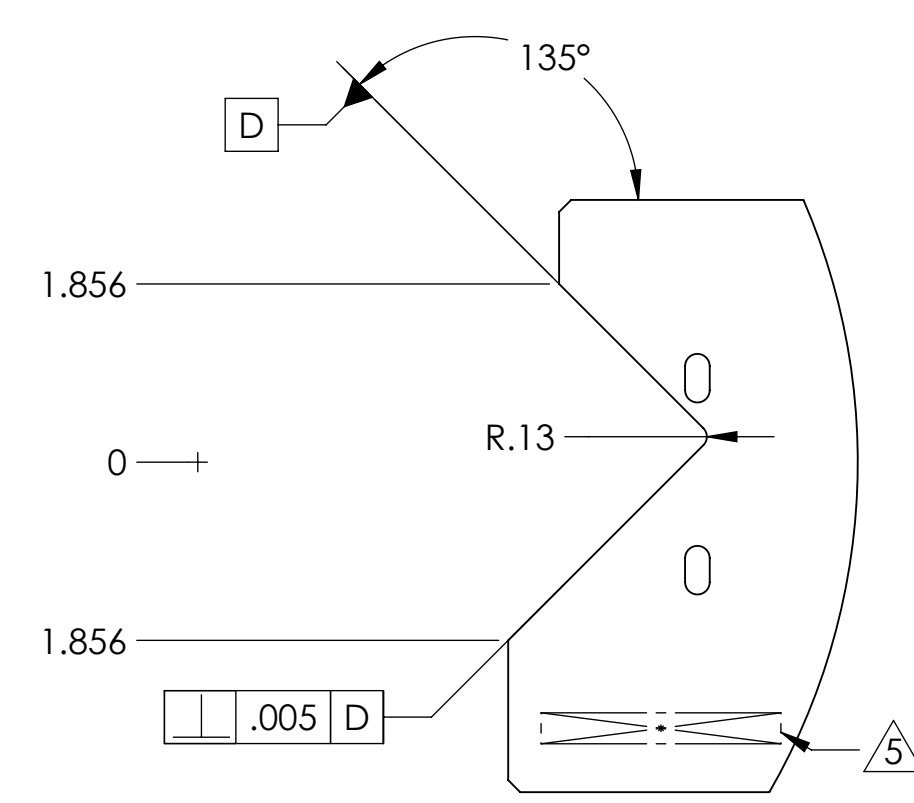
D1201070-14 (LHO ONLY)



D1201070-16 (LHO ONLY)



D1201070-17 (LLO ONLY)



LIGO CALIFORNIA INSTITUTE OF TECHNOLOGY MASSACHUSETTS INSTITUTE OF TECHNOLOGY		REV.
SIZE DWG. NO.	D1201070	v4
SCALE: 1:2	PROJECTION:	SHEET 5 OF 5

D1201070-14.DWG. HANM4.TCS.HWS. INSTALLATION PLATE KIT. PART PDM REV. X.018. DRAWING PDM REV. X.015