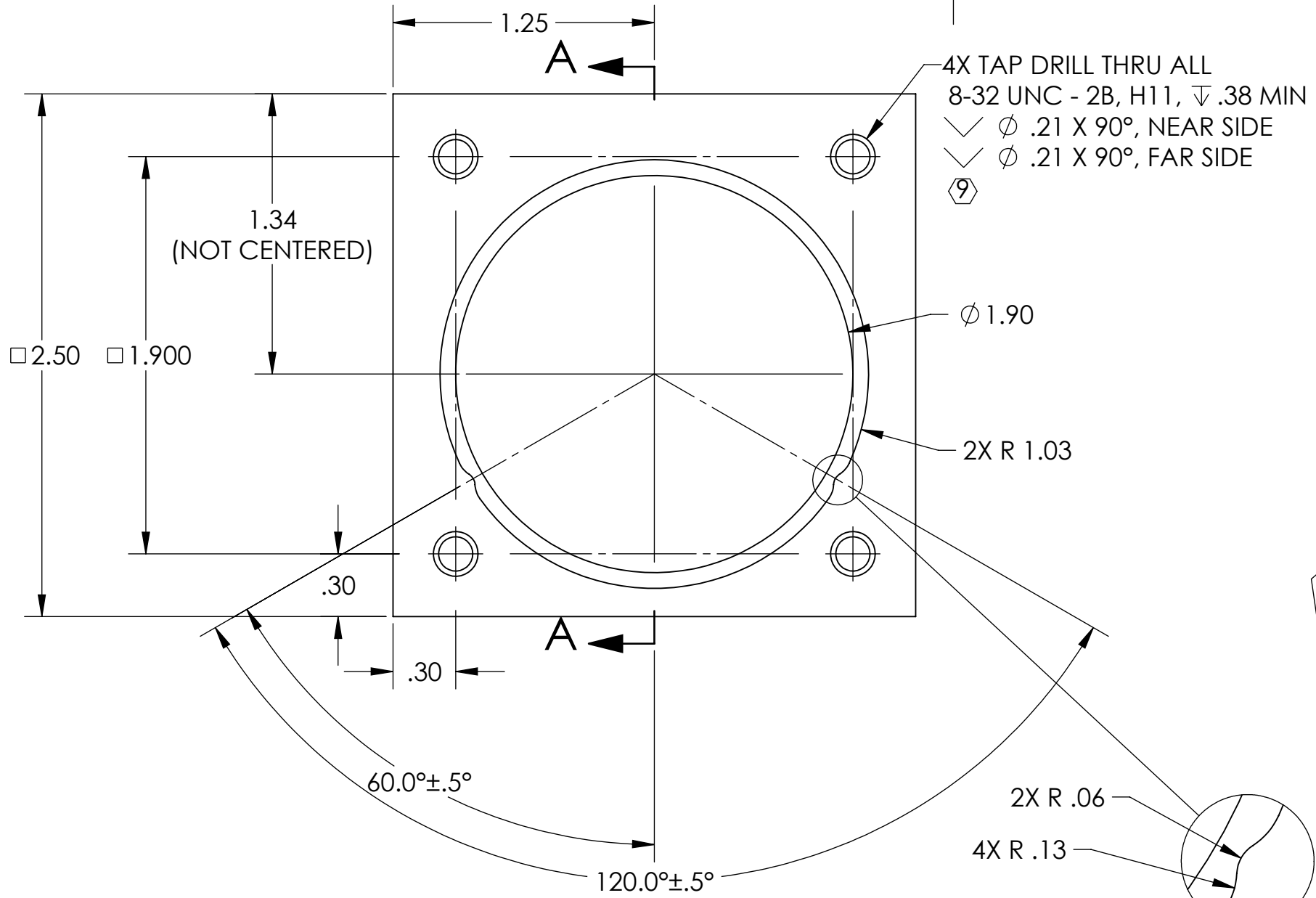
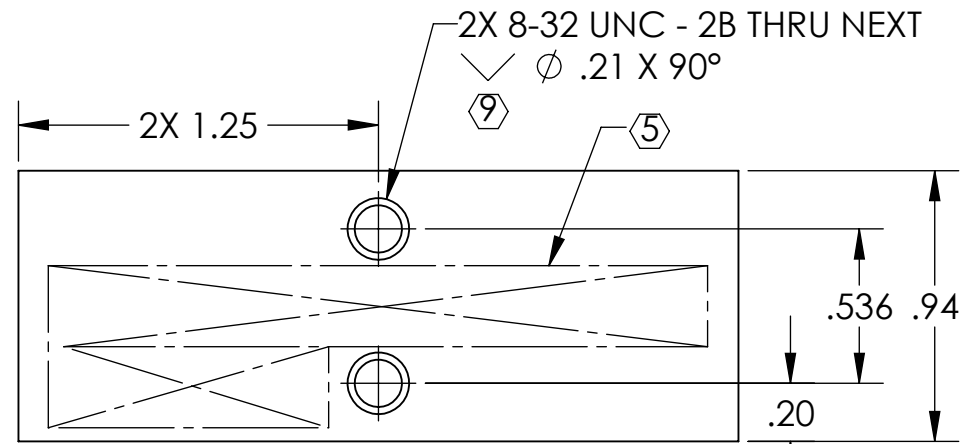
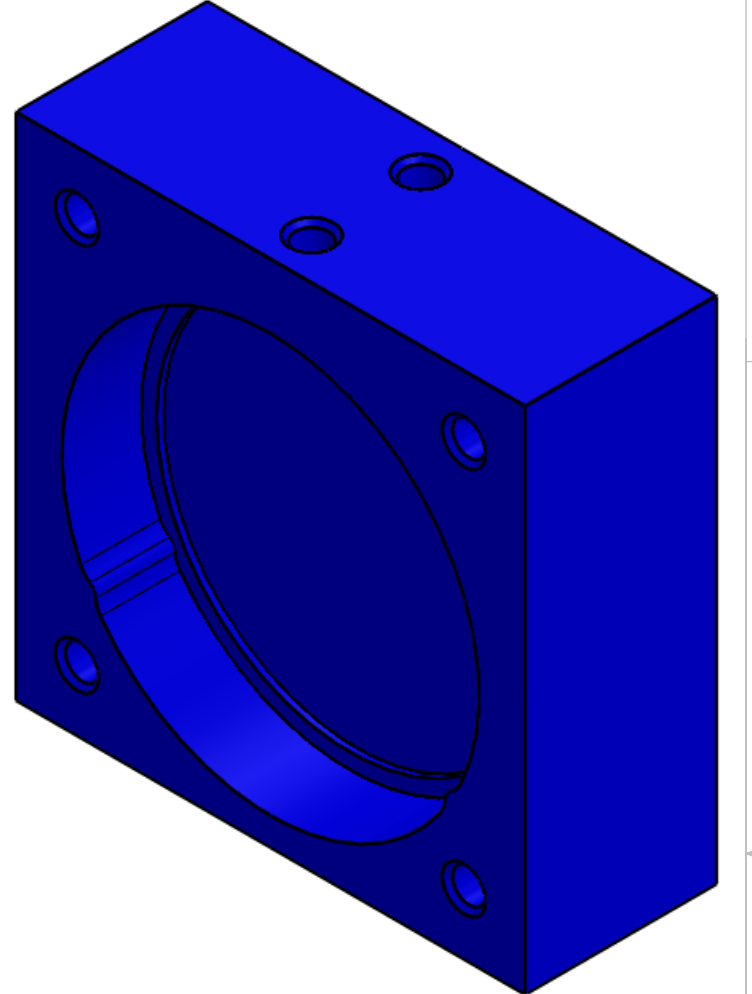
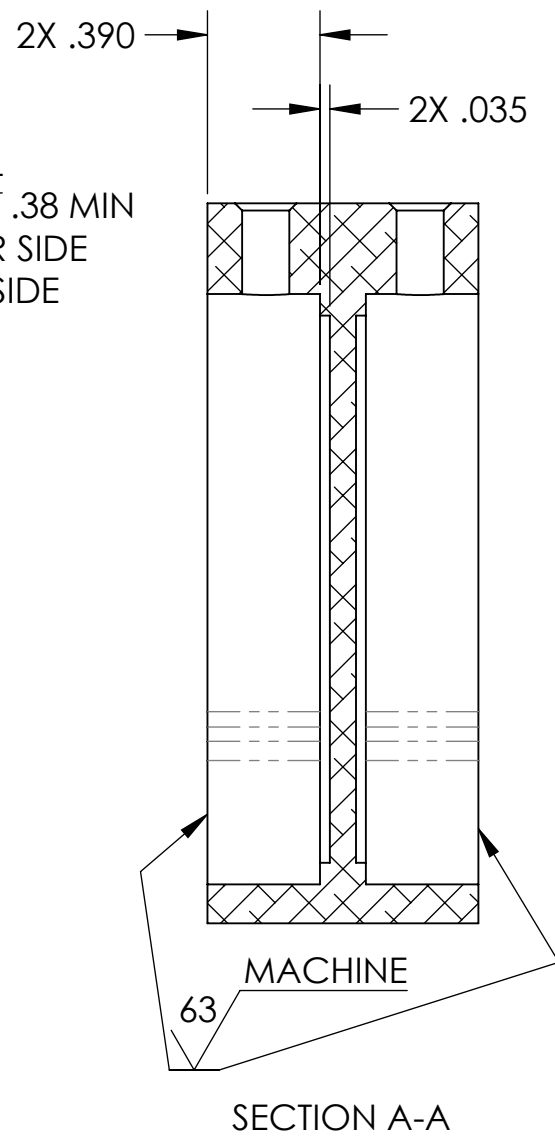


NOTES CONTINUED:
 5. SCRIBE, ENGRAVE (A VIBRATORY TOOL MAY BE USED), LASER MARK OR MECHANICALLY STAMP (NO INKS OR DYES) DRAWING PART NUMBER, REVISION (AND VARIANT OR "TYPE" IF APPLICABLE) ON NOTED SURFACE OF PART FOLLOWED ON THE NEXT LINE WITH A THREE DIGIT SERIAL NUMBER. SERIAL NUMBERS START AT 001 FOR THE FIRST ARTICLE AND PROCEED CONSECUTIVELY. USE MINIMUM 0.12" HIGH CHARACTERS, UNLESS THE SIZE OF THE PART DICTATES SMALLER CHARACTERS. EXAMPLE: DXXXXXX-VY, TYPE-XX, S/N XXX

- 6. WEIGHT: 0.29 LB.
- 7. ALL PARTS SHALL BE MANUFACTURED IN ACCORDANCE WITH LIGO SPECIFICATION E0900364.
- 8. ALL MATERIAL IS TO BE VIRGIN MATERIAL (i.e. NO WELD REPAIRS, PLUGS OR RECYCLED MATERIAL). NO REPAIRS SHALL BE MADE UNLESS APPROVED IN ADVANCE, AND IN WRITING, BY LIGO LABORATORY. REFER TO LIGO-E0900364.
- 9. ALL TAPPED HOLES: 0.005 OVERSIZE BOTH DRILL AND TAP.
- 10. ALL MACHINED SURFACES (TAP HOLES & THREADS EXCLUDED): 63 μinch MAX ROUGHNESS.



**ALL FEATURES THIS VIEW:
REPEAT BOTH SIDES**



REV.	DATE	DCN #	BOM #
-	-	-	-
-	-	-	-
-	-	-	-

NOTES AND TOLERANCES: (UNLESS OTHERWISE SPECIFIED)	
DIMENSIONS ARE IN INCHES	
TOLERANCES: .XX ± .01 .XXX ± .005 ANGULAR ± 0.1°	
1. INTERPRET DRAWING PER ASME Y14.5-1994. 2. REMOVE ALL SHARP EDGES, .005-.015, FOR MACHINED PARTS. ROUND ALL EDGES APPROXIMATELY R.02 FOR SHEET METAL PARTS. 3. DO NOT SCALE FROM DRAWING. 4. ALL MACHINING FLUIDS MUST BE FULLY SYNTHETIC, FULLY WATER SOLUBLE AND FREE OF SULFUR, SILICONE, AND CHLORINE.	
MATERIAL	6061-T6 Al
FINISH	10

LIGO CALIFORNIA INSTITUTE OF TECHNOLOGY MASSACHUSETTS INSTITUTE OF TECHNOLOGY		PART NAME	
SYSTEM ADVANCED LIGO		aLIGO PCAL 2" MIRROR STORAGE HOLDER	
SUB-SYSTEM AOS		DESIGNER R. SAVAGE	DATE 24 JUL 2012
NEXT ASSY D1201066		DRAFTER C. CONLEY	DATE 27 JUL 2012
		CHECKER	APPROVAL
		SCALE: NONE	PROJECTION:
		SIZE DWG. NO. B	D1201049
		REV. v1	SHEET 1 OF 1

D1201049 aLIGO PCal 2in Mirror Storage Holder, PART PDM REV: X-003, DRAWING PDM REV: X-006