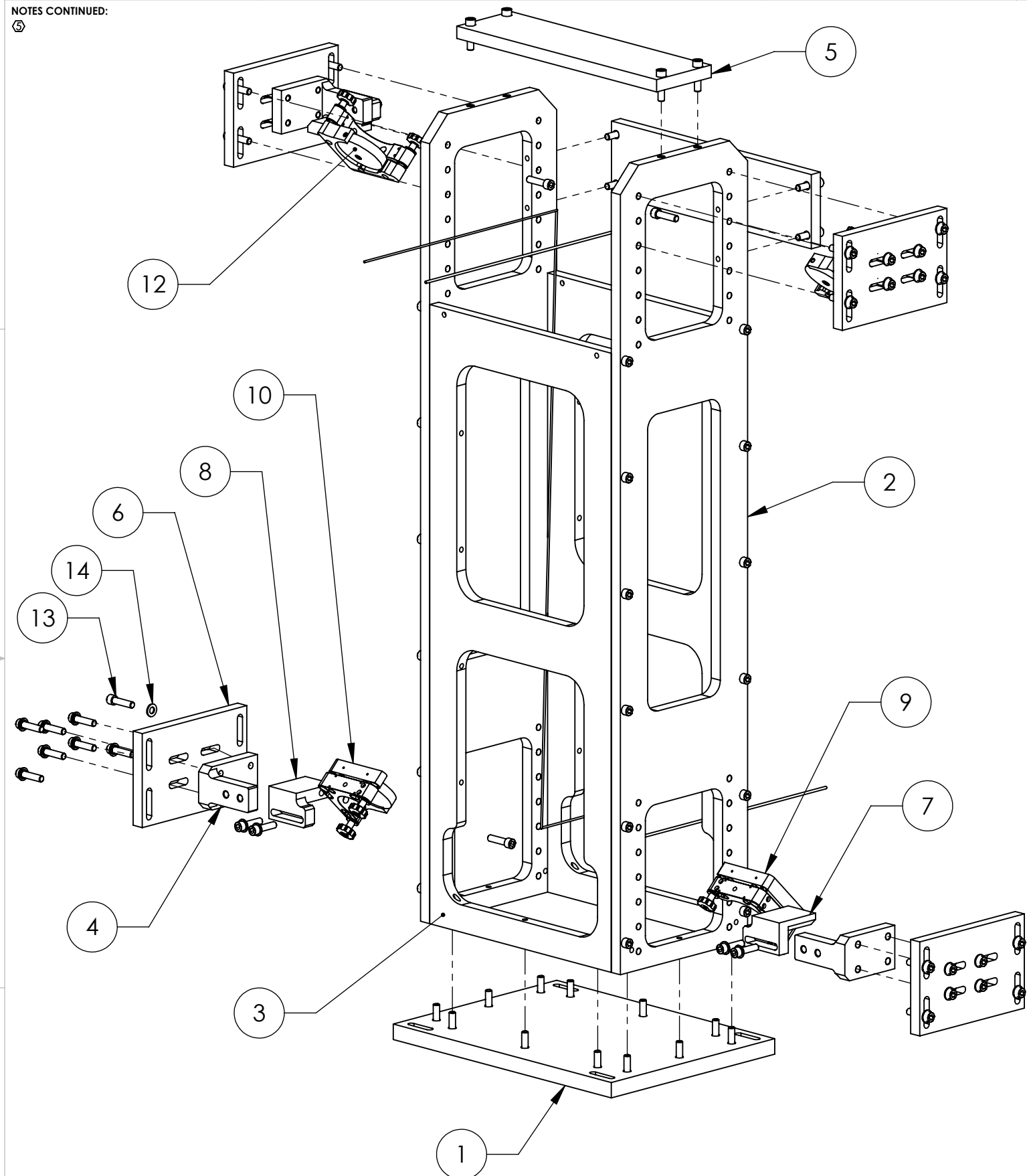


D1201013 Periscope, Double Beam, In Air, aLIGO, PART PDM REV.: DRAWING PDM REV.:

NOTES CONTINUED:
⑤

REV.	DATE	DCN #	DRAWING TREE #
-	-	-	-
-	-	-	-
-	-	-	-



14	McMASTER_90313A203	WASHER FLAT .26 ID X .50 OD X .05 THK	18-8 SSSL	40
13	HOLOKROME_78062	SHCS, 1/4-20 x 1.0"	18-8 SS	88
12		2" MIRROR	TRANSPARENT GLASS	4
10		NEWPORT U200-A2K-NL-RH		2
9		NEWPORT U200-A2K-NL-LH		2
8	D1201029	Right Mirror Mount Block, Periscope, Double Beam, In Air, aLIGO	6061-T6 Al	2
7	D1201028	Left Mirror Mount Block, Periscope, Double Beam, In Air, aLIGO	6061-T6 Al	2
6	D1201027	Vertical Adjust Plate, Periscope, Double Beam, In Air, aLIGO	6061-T6 Al	4
5	D1201026	Brace, Periscope, Double Beam, In Air, aLIGO	6061-T6 Al	2
4	D1201015	Bracket, Periscope, Double Beam, In Air, aLIGO	6061-T6 Al	4
3	D1201011	Front-Back, Periscope, Double Beam, In Air, aLIGO	6061-T6 Al	2
2	D1201010	Sides, LT RT, Periscope, Double Beam, In Air, aLIGO	6061-T6 Al	2
1	D1201009	Base, Periscope, Double Beam, In Air, aLIGO	6061-T6 Al	1
ITEM NO.	PART NUMBER	DESCRIPTION	MATERIAL	REQ

PARTS LIST

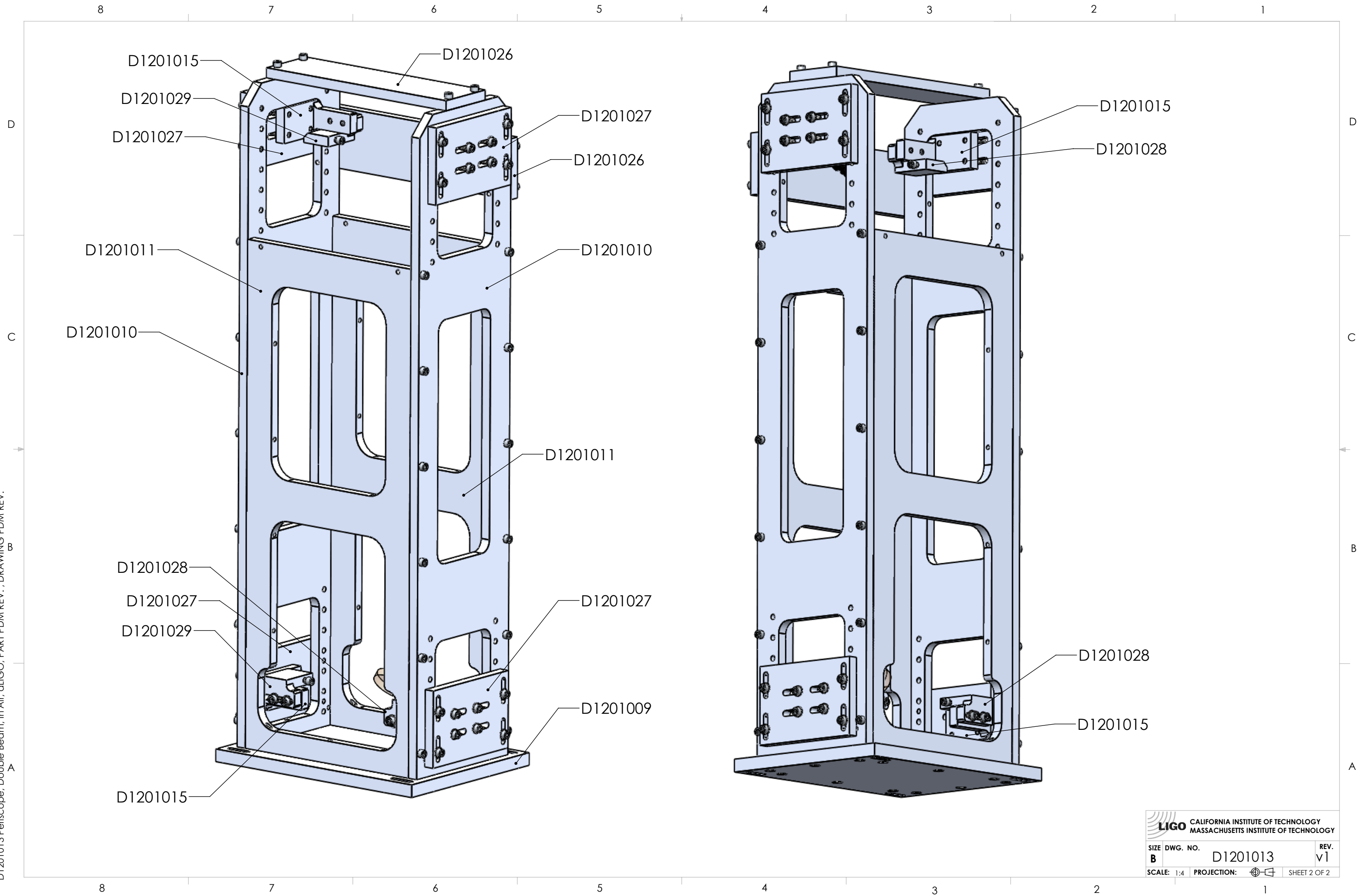
NOTES AND TOLERANCES: (UNLESS OTHERWISE SPECIFIED)

DIMENSIONS ARE IN INCHES

MATERIAL		FINISH		NEXT ASSY		CALIFORNIA INSTITUTE OF TECHNOLOGY MASSACHUSETTS INSTITUTE OF TECHNOLOGY		PART NAME Periscope, Double Beam, In Air, aLIGO	
				NONE		SYSTEM ADVANCED LIGO		SUB-SYSTEM ISC	
						DESIGNER SBARNUM 1 AUG 2012		SIZE DWG. NO. B D1201013	
						DRAFTER SBARNUM 13 AUG 2012		REV. v1	
						CHECKER APPROVAL		SCALE: 1:4 PROJECTION: SHEET 1 OF 2	

8 7 6 5 4 3 2 1

D1201013 Periscope, Double Beam, In Air, dLIGO, PART PDM REV.: , DRAWING PDM REV:



LIGO CALIFORNIA INSTITUTE OF TECHNOLOGY
 MASSACHUSETTS INSTITUTE OF TECHNOLOGY

SIZE	DWG. NO.	REV.
B	D1201013	v1
SCALE: 1:4		PROJECTION:
		SHEET 2 OF 2