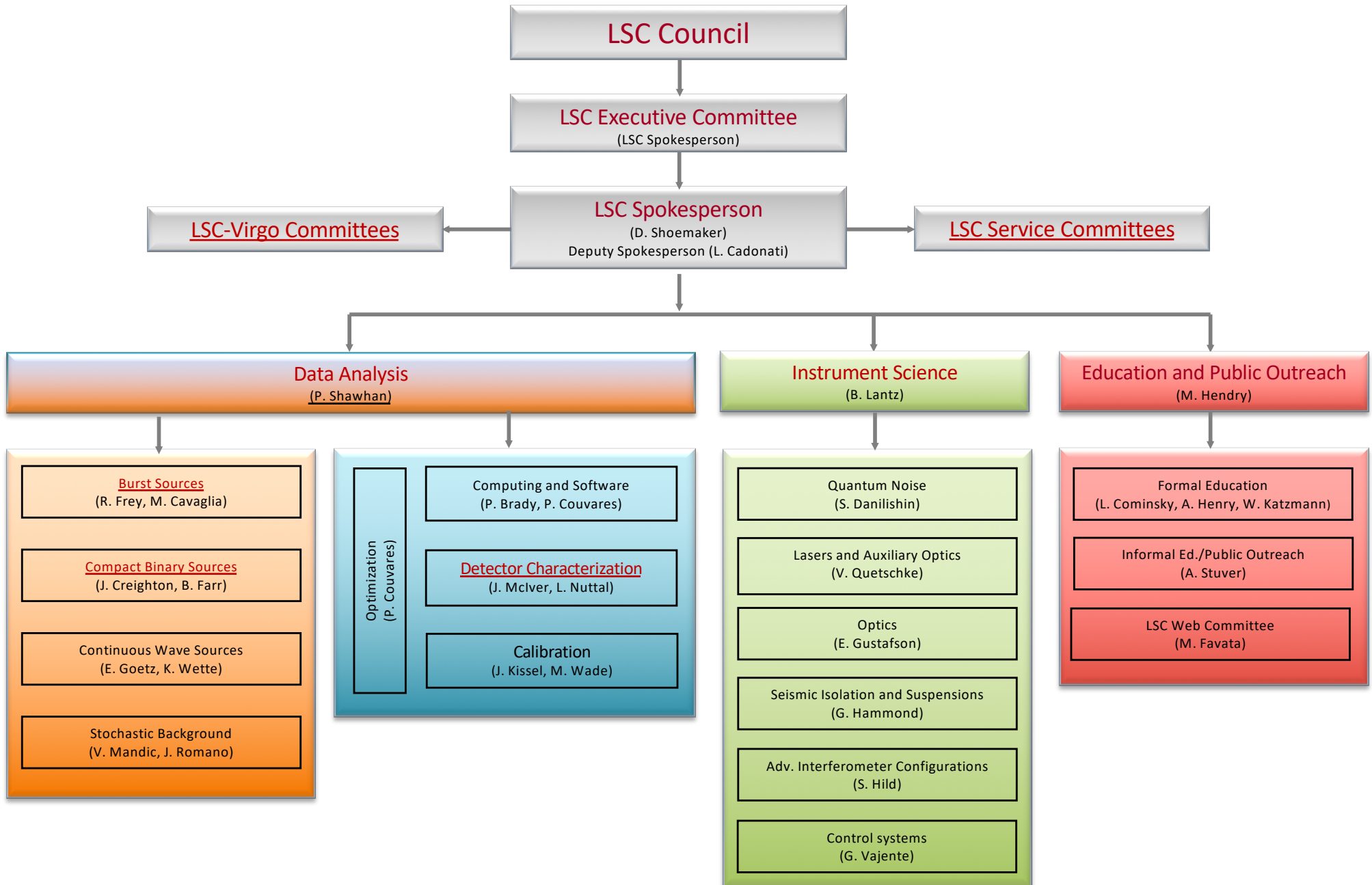


# The LIGO Scientific Collaboration



## LSC Executive Committee

Voting members  
(Bylaws [LIGO Document M050172](#))

### LSC Directorate

LSC Spokesperson (David Shoemaker, Executive Committee chair)  
LSC Deputy Spokesperson (Laura Cadonati)  
LIGO Laboratory Executive Director (David Reitze)  
LIGO Laboratory Deputy Director (Albert Lazzarini)

### LIGO Observatory Representatives

Michael Landry (Hanford)  
Joe Giaime (Livingston)

### Detector Group Representatives

Bernard Schutz (GEO)

### At large (elected) members

Stefan Ballmer, Bala Iyer, Vassiliki Kalogera, Keith Riles

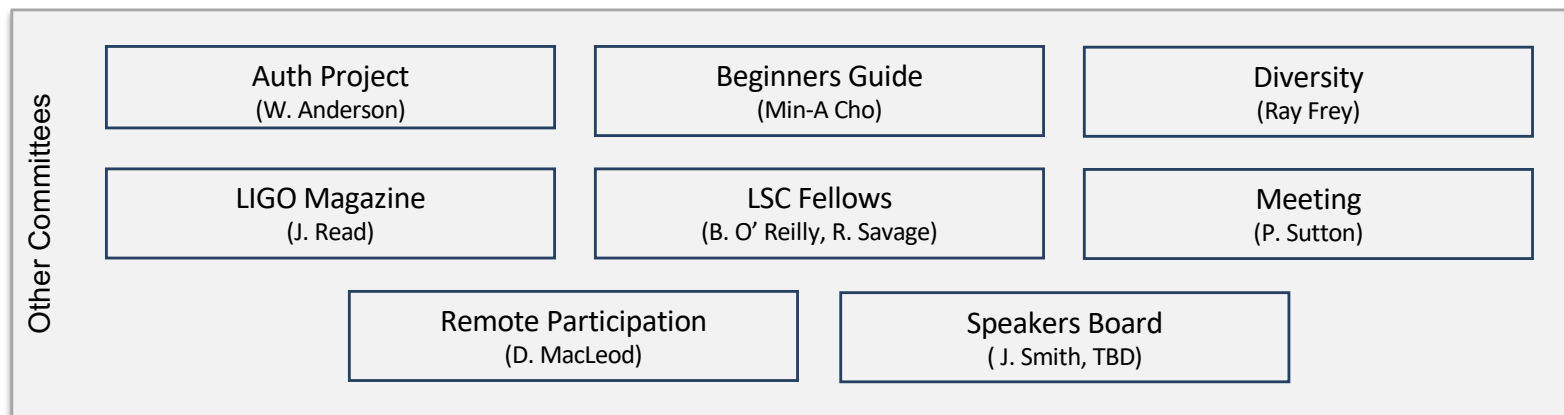
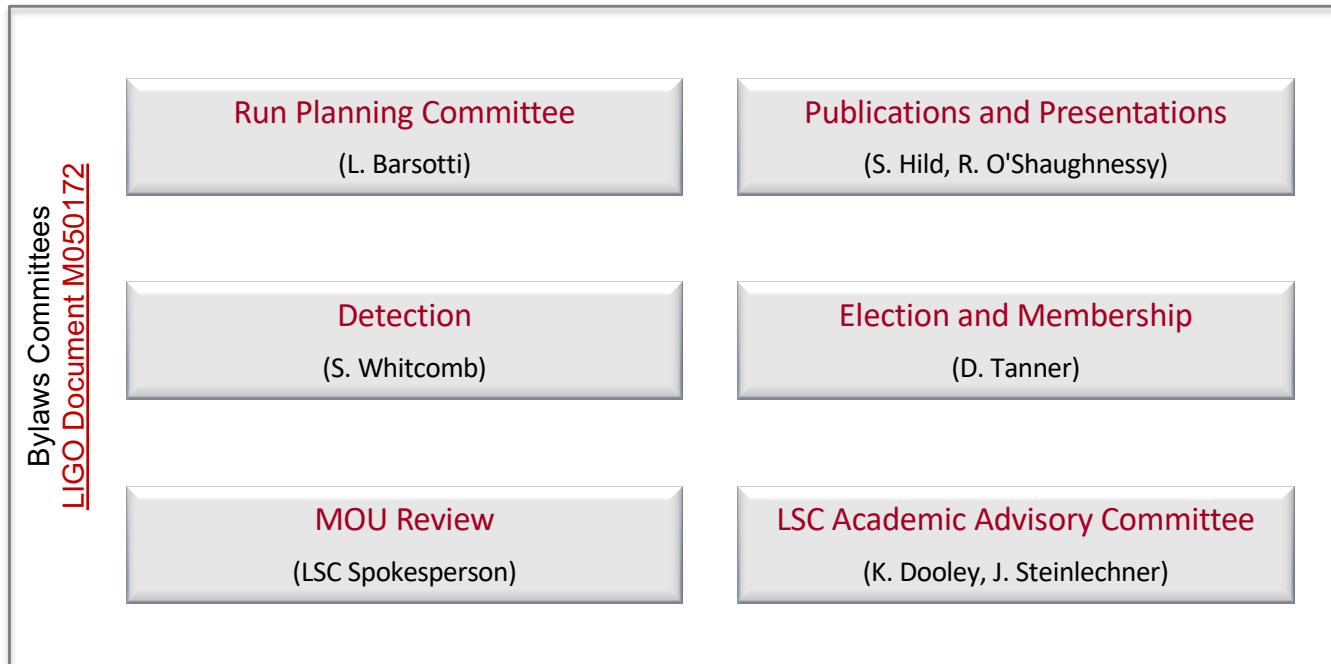
### Appointed Members

Peter Shawhan (Data Analysis Committee chair)  
Brian Lantz (Advanced Detector Committee chair)  
Jess McIver (Detector Characterization Committee co-chair)  
Stefan Hild (Publications and Presentations Committee co-chair)  
Patrick Brady/Peter Couvares (Computing and Software Committee co-chair)

### Invited (non-voting) members

Stuart Anderson, Lisa Barsotti, Patrick Brady/Peter Couvares, Laura Nuttal

## LSC Service Committees



## LSC-Virgo Committees

LSC-Virgo Attachment A Committees

[LIGO Document M060322](#)

### Calibration

(M. Wade [L], L. Rolland [V])

### Computing and Software

(B. Brady, P. Couvares [L],  
F. Carbognani, S Caudill [V])

### Data Analysis Council

(P. Shawhan [L], G. Prodi [V])

### Detection

(S. Whitcomb [L], F. Marion [V])

### Detector Characterization

(J. McIver [L], F. Robinet [V])

### Joint Run Planning Committee

(L. Barsotti [L], N. Leroy [V])

### LV Editorial Board

(S. Hild [L], V. Fafone[V])

### Meeting

(P. Sutton [L], F. Frasconi [V])

Other  
Committees

LSC-Virgo Diversity  
(R. Frey [L], T. Regimbau [V])

LSC-Virgo EPO  
(M. Hendry [L], L. Conti [V])

## Detector Characterization

(A. Lundgren, J. McIver)

### Data Quality

(D. MacLeod, L. Nuttall)

### Instrument

(T.J. Massinger, M. Walker)

### Instrument subsystems

Alignment Sensing and Control  
(P. Altin, M. Kasprzack, T.J. Massinger)

Data Acquisition

Input Mode Cleaner  
(L. Nuttall)

Length Sensing and Control  
(P. Altin, T.J. Massinger)

Output Mode Cleaner  
(M. Kasprzack)

Photometric Calibration  
(S. Kandhasamy)

Phys. Environmental Monitoring  
(R. Schofield)

Pre-Stabilized Laser  
(D. Davis)

Seismic Isolation  
(B. Sorazu and A. Urban)

Suspensions  
(T. Abbott, M. Walker)

Thermal Compensation System  
(G. Valdes)

Coordinators  
and liaisons

Compact Binary Sources Liaison  
(T.J. Massinger, L. Nuttall)

Burst Sources Liaisons  
(B. Hughey, M. Walker)

Continuous Wave Sources Liaison  
(E. Goetz and A. Sintes)

Stochastic Sources Liaison  
(L. Sammut)

CDS/GDS Coordinator  
(R. Fisher)

## LSC-Virgo Burst Sources

(R. Frey [L], M. Cavaglia [L], M. A. Bizouard [V] )

### All-Sky Team

(Burst co-chairs)

### GW-High Energy Neutrinos

(I. Bartos [L])

### GW-EM Follow-up

(E. Katsavounidis [L], L. Singer [L],  
M. Branchesi [V])

### Core Collapse Supernovae

(M. Szczepanczyk [L])

Joint with CBC

### Neutron Star Physics

(J. Clark [L])

### Gamma Ray Bursts

(R. Frey [L], F. Pannarale [L], M. Was [V])

Joint with CBC

### Parameter Estimation

(N. Cornish [L], S. Vitale [L])

### Intermediate Mass BH Binaries

(F. Salemi [L])

Joint with CBC

## LSC-Virgo Compact Binary Sources

(J. Creighton [L], B. Farr [L], E. Porter [V])

### Research and Development Subgroups

#### Parameter Estimation

(V. Raymond [L], C. Haster [L])

#### Tests of General Relativity

(T. Li [L], C. Van Den Broeck [V])

#### Waveforms

(H. Pfeiffer [L], F. Ohme [L])

#### Rates and Population

(C. Pankow [L], W. Farr [L])

#### Cosmology

(J. Gair [L], A. Ghosh [V])

#### Extreme Matter

(TBD)

Joint with Burst

#### All-Sky Search

(I. Harry [L], S. Caudill [V], T. Dent [L])

#### Low-Latency Search

(P. Brady [L], E. Katsavounidis [L], TBD)

Joint with Burst and DetChar

#### Externally-Triggered Search

(TBD)

Joint with Burst

### O3 Project Subgroups

#### Catalog of Compact Binaries

#### Astrophysical Distribution of Compact Binaries

#### Strong Field Tests of General Relativity

#### Hubble Constant Measurements

#### Sub-Solar Mass Binary Search

#### Intermediate Mass Binary Search

Joint with Burst

#### Multimessenger Search for GWs and GRBs

Joint with Burst

#### Multimessenger Search for GWs and FRBs

Joint with Burst

#### Multimessenger Search for GWs and HENs

Joint with Burst

#### Measuring the Neutron Star Equation of State

Joint with Burst

#### Stochastic Background from Binary Black Hole Mergers

Joint with Stochastic

#### Characterizing Exceptional CBC Events