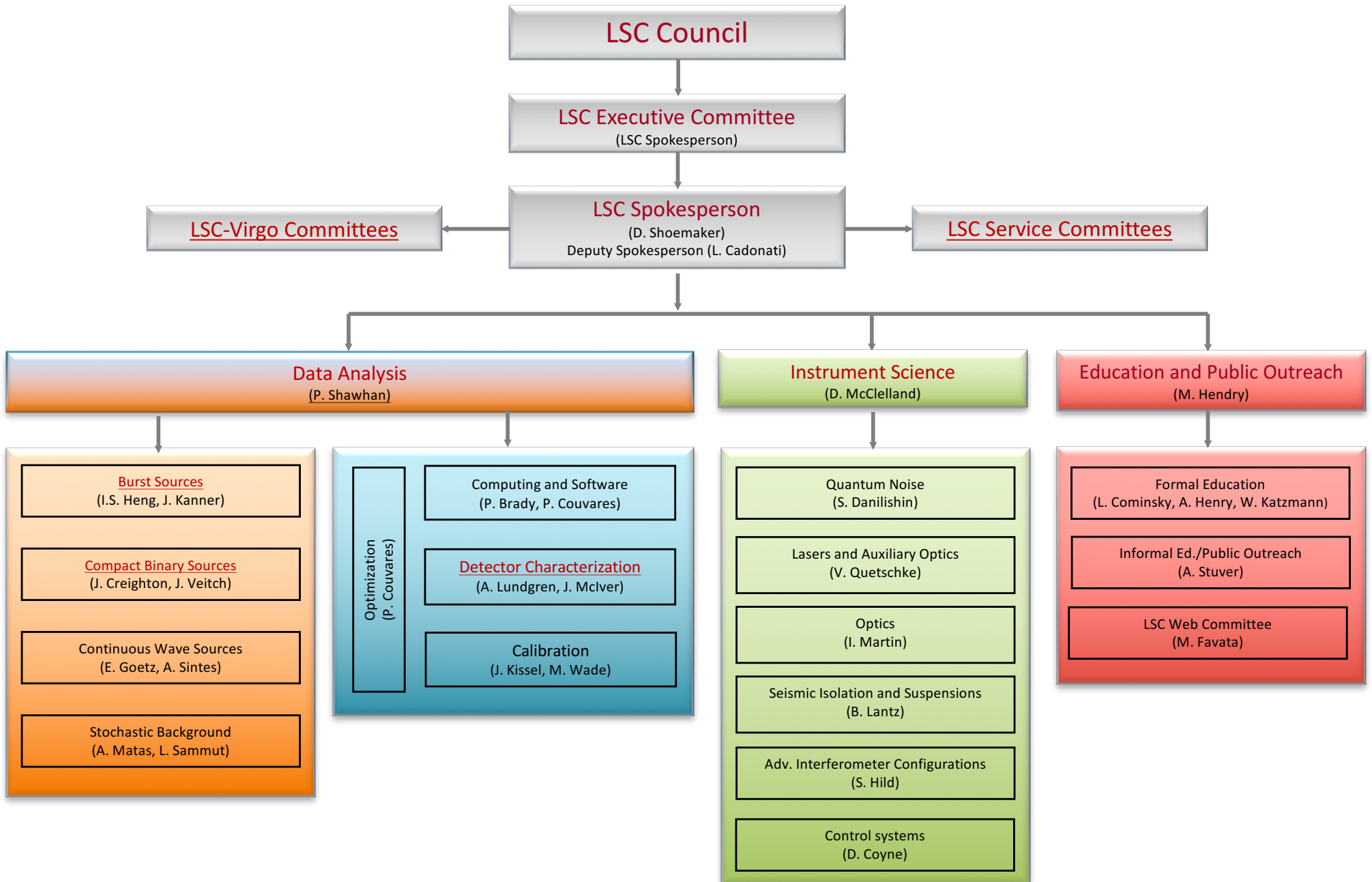


The LIGO Scientific Collaboration



LSC Executive Committee

Voting members
(Bylaws [LIGO Document M050172](#))

LSC Directorate

LSC Spokesperson (David Shoemaker, Executive Committee chair)
LSC Deputy Spokesperson (Laura Cadonati)
LIGO Laboratory Executive Director (David Reitze)
LIGO Laboratory Deputy Director (Albert Lazzarini)

LIGO Observatory Representatives

Michael Landry (Hanford)
Joe Giaime (Livingston)

Detector Group Representatives

Bernard Schutz (GEO)

At large (elected) members

Barry Barish, Vassiliki Kalogera, Keith Riles, Peter Saulson

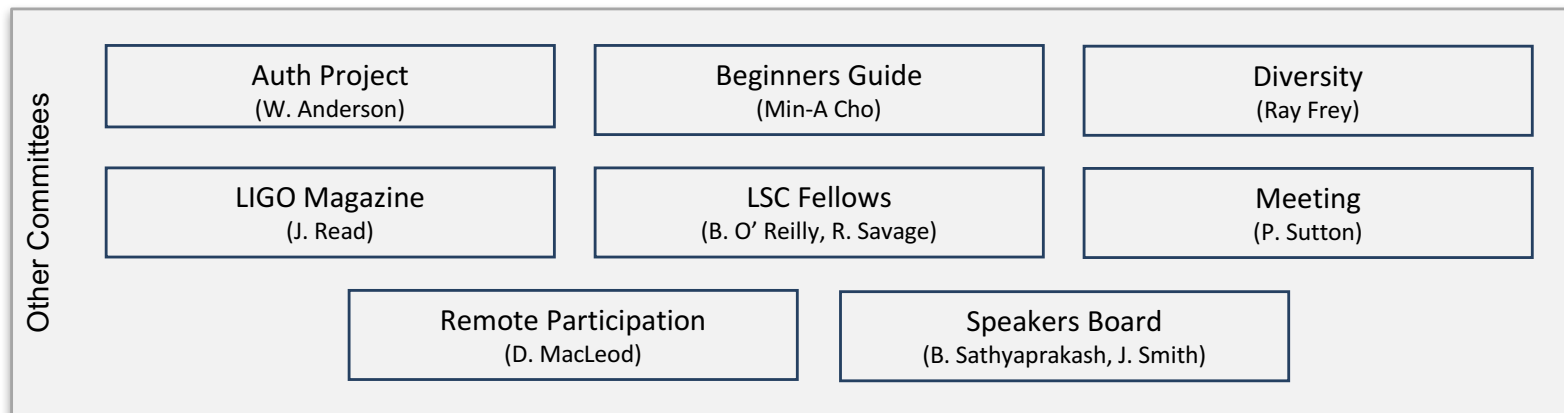
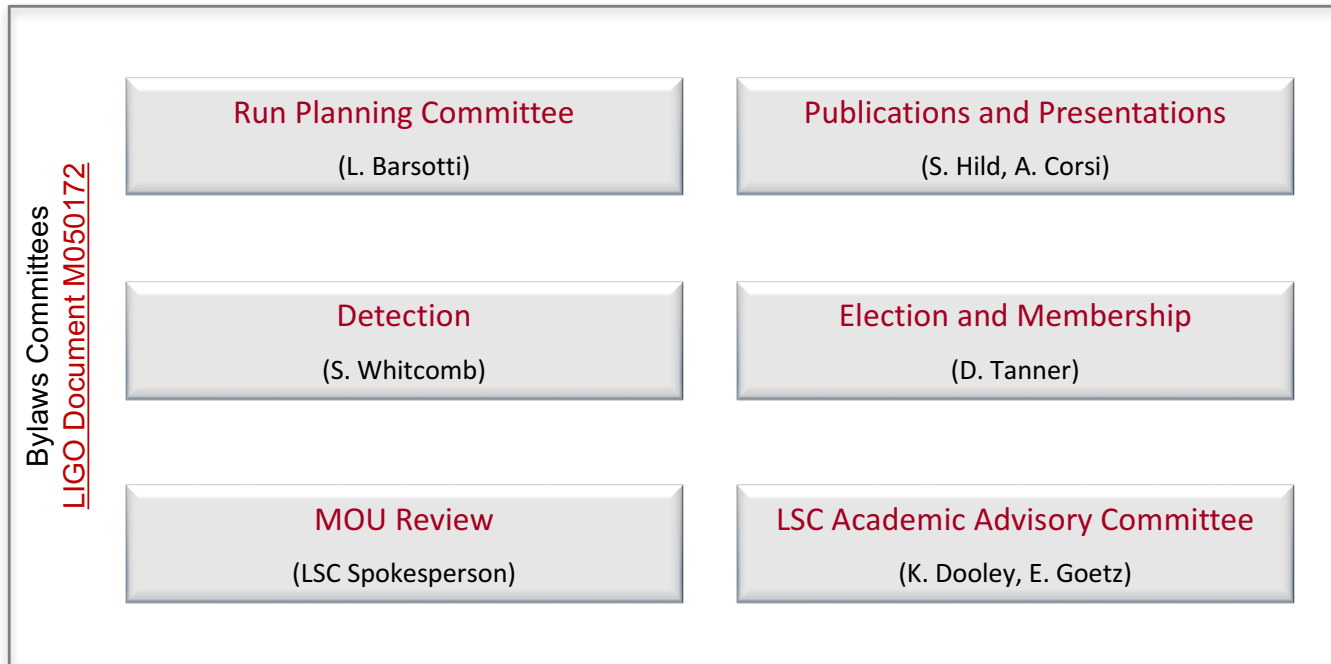
Appointed Members

Peter Shawhan (Data Analysis Committee chair)
David McClelland (Advanced Detector Committee chair)
Andy Lundgren (Detector Characterization Committee co-chair)
Stefan Hild (Publications and Presentations Committee co-chair)
Patrick Brady/Peter Couvares (Computing and Software Committee co-chair)

Invited (non-voting) members

Bruce Allen, Stuart Anderson, Lisa Barsotti, Patrick Brady/Peter Couvares, Jess McIver

LSC Service Committees



LSC-Virgo Committees

LSC-Virgo Attachment A Committees

[LIGO Document M060322](#)

Calibration

(M. Wade [L], L. Rolland [V])

Computing and Software

(B. Brady [L], P. Couvares [L], M. Punturo [V])

Data Analysis Council

(P. Shawhan [L], G. Prodi [V])

Detection

(S. Whitcomb [L], F. Marion [V])

Detector Characterization

(A. Lundgren [L], F. Robinet [V])

Joint Run Planning Committee

(L. Barsotti [L], N. Leroy [V])

LV Editorial Board

(S. Hild [L], R. Passaquieti [V])

Meeting

(P. Sutton [L], F. Fidecaro [V])

Other
Committees

LSC-Virgo Diversity
(R. Frey [L], P. Leaci [V])

Detector Characterization

(A. Lundgren, J. McIver)

Data Quality

(D. MacLeod, L. Nuttall)

Instrument

(T.J. Massinger, J. McIver)

Instrument subsystems

Alignment Sensing and Control
(P. Altin, M. Kasprzack, T.J. Massinger)

Data Acquisition

Input Mode Cleaner
(L. Nuttall)

Length Sensing and Control
(P. Altin, T.J. Massinger)

Output Mode Cleaner
(M. Kasprzack)

Photometric Calibration
(S. Kandhasamy)

Phys. Environmental Monitoring
(R. Schofield)

Pre-Stabilized Laser
(J. McIver)

Seismic Isolation
(E. Cowan)

Suspensions
(T. Abbott, M. Walker)

Thermal Compensation System
(G. Valdes)

Coordinators
and liaisons

Compact Binary Sources Liaison
(T.J. Massinger, L. Nuttall)

Burst Sources Liaison
(B. Hughey)

Continuous Wave Sources Liaison
(K. Riles)

Stochastic Sources Liaison
(A. Matas)

CDS/GDS Coordinator
(R. Fisher)

LSC-Virgo Burst Sources

(I.S. Heng [L], J. Kanner [L], M. A. Bizouard [V])

All-Sky Team

(Burst co-chairs)

GW-High Energy Neutrinos

(I. Bartos [L])

GW-EM Follow-up

(E. Katsavounidis[L], L. Singer [L],
M. Branchesi [V])

Core Collapse Supernovae

(M. Szczepanczyk [L])

Joint with CBC

Neutron Star Physics

(J. Clark [L])

Gamma Ray Bursts

(R. Frey [L], F. Pannarale [L], M. Was [V])

Joint with CBC

Parameter Estimation

(N. Cornish [L], S. Vitale [L])

Intermediate Mass BH Binaries

(F. Salemi [L])

Joint with CBC

LSC-Virgo Compact Binary Sources

(J. Creighton [L], J. Veitch [L], E. Porter [V])

Research and Development Subgroups

Parameter Estimation

(V. Raymond [L], B. Farr [L])

Tests of General Relativity

(W. Del Pozzo [V], C. Van Den Broeck [V])

Waveforms

(H. Pfeiffer [L], F. Ohme [L], R. Sturani [L])

Rates and Population

(C. Pankow [L], W. Farr [L])

Offline Searches

(I. Harry [L], S. Caudill [L], T. Dent [L])

Online Searches

(K. Cannon [L], F. Marion [V])

O2 Project Subgroups

Catalog of Compact Binaries

(P. Schmidt [L], Michael Pürrer [L], Josh Willis [L], Brian O'Reilly [L])

Astrophysical Distribution of Compact Binaries

(C. Pankow [L], D. Holz [L])

Testing General Relativity

(S. Vitale [L], A. Parameswaran [L], J. Whelan [L])

Extreme Matter

(J. Read [L], B. Lackey [L])

Searching for Gamma Ray Burst Gravitational Wave Counterparts

(R. Frey [L], F. Pannarale [L], M. Was [V])

Joint with Bursts

Multimessenger Astronomy and Astrophysics

(A. Urban [L], P. Shawhan [L], L. Singer [L], P. Brady [L], M. Branchesi [V])

Joint with Bursts