

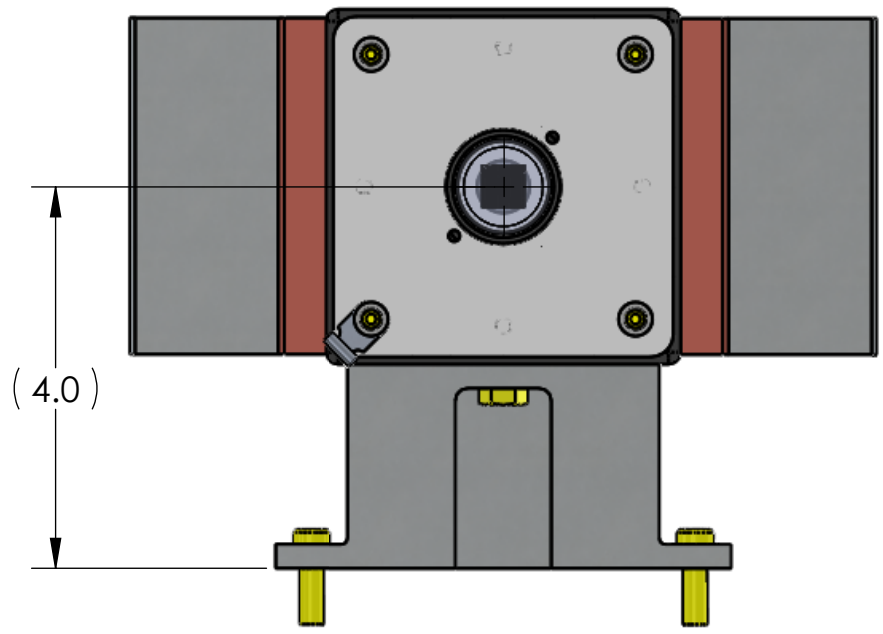
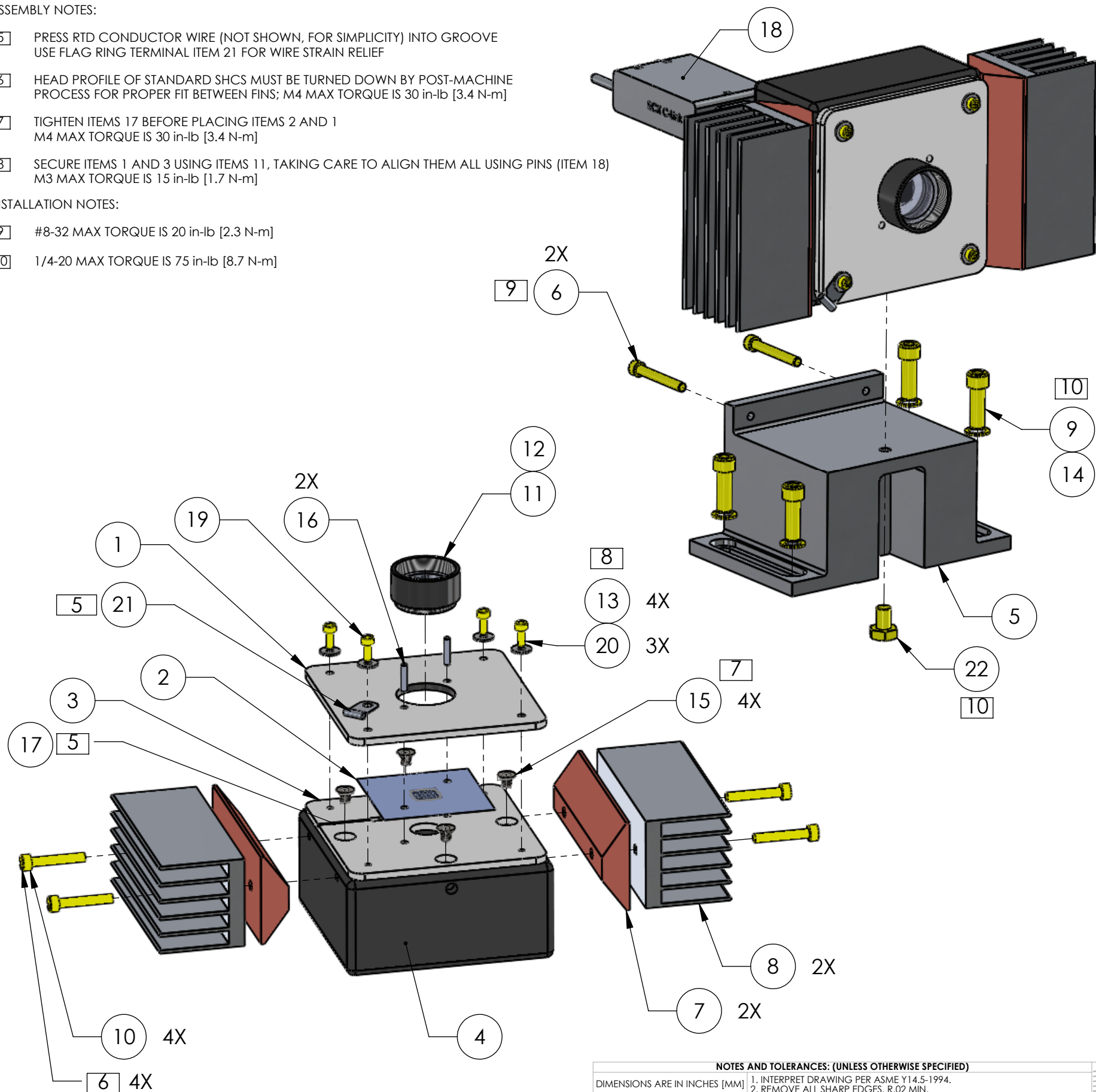
D1000657_HARTMANN SENSOR, PART PDM REV: X-075, DRAWING PDM REV: X-018

ASSEMBLY NOTES:

- [5] PRESS RTD CONDUCTOR WIRE (NOT SHOWN, FOR SIMPLICITY) INTO GROOVE USE FLAG RING TERMINAL ITEM 21 FOR WIRE STRAIN RELIEF
- [6] HEAD PROFILE OF STANDARD SHCS MUST BE TURNED DOWN BY POST-MACHINE PROCESS FOR PROPER FIT BETWEEN FINS; M4 MAX TORQUE IS 30 in-lb [3.4 N-m]
- [7] TIGHTEN ITEMS 17 BEFORE PLACING ITEMS 2 AND 1
M4 MAX TORQUE IS 30 in-lb [3.4 N-m]
- [8] SECURE ITEMS 1 AND 3 USING ITEMS 11, TAKING CARE TO ALIGN THEM ALL USING PINS (ITEM 18)

INSTALLATION NOTES:

- [9] #8-32 MAX TORQUE IS 20 in-lb [2.3 N-m]
- [10] 1/4-20 MAX TORQUE IS 75 in-lb [8.7 N-m]



REV.	DATE	DCN #	DRAWING TREE #
v2	28-FEB-2011	E1100147-v1	E1100148-v1
v3	31-MAY-2011	E1100490-v1	E1100148-v2
v4	06-JUL-2012	E1200579-x0	E1200580-v1
v5	11-FEB-2013	E1200579-v1	E1200580-v2
v6	22-NOV-2013	E1200579-v2	E1200580-v3

ITEM NO.	PART NUMBER	QTY.
1	D1000658_aLIGO TCS HARTMANN SENSOR PLATE CLAMP	1
2	D1000669_TCS HARTMANN SENSOR PLATE	1
3	D1000708_aLIGO TCS HARTMANN SENSOR CAMERA SPACER PLATE	1
4	D1000709_CAMERA, DALSA PANTERA 1M60	1
5	D1000715_HARTMANN SENSOR CAMERA MOUNT	1
6	SST SOCKET HEAD CAP SCREW #8-32 UNC-2A X 1.25 LONG	2
7	D1000729_HARTMANN SENSOR HEAT SPREADER	2
8	D1000736_HARTMANN SENSOR HEAT SINK	2
9	SST SOCKET HEAD CAP SCREW 0.25-20 UNC-2A X 0.75 LONG	4
10	MODIFIED SST SOCKET HEAD CAP SCREW M4 X 25 LONG	4
11	ThorLabs_SM1L05 Lens Tube	1
12	ThorLabs_FB840-10 BandPass Filter	1
13	M3 (.8 MM THICK) FLAT WASHER Metric-DIN 125 (OR EQUIV.)	4
14	0.25in, MS 15795-854 FLAT WASHERS (OR EQUIV.)	4
15	FHSCS M4 X 6 MM LONG, MCMMASTER 92125A186	4
16	DOWEL PIN, METRIC, 2.5 MM OF X 12 MM LONG, STAINLESS STEEL	2
17	D1200568_HARTMANN PLATE RTD CABLE ASSEMBLY	1
18	RCX C-LINK, EDT	1
19	SST SOCKET HEAD CAP SCREW M3 X 8 LONG	1
20	SST SOCKET HEAD CAP SCREW M3 X 6 LONG	3
21	FLAG RING TERMINAL (MCMMASTER CARR PN 73125K68)	1
22	SST HEX HEAD SCREW, 1/4-20 x 0.5 LONG	1

NOTES AND TOLERANCES: (UNLESS OTHERWISE SPECIFIED)

1. INTERPRET DRAWING PER ASME Y14.5-1994.
 2. REMOVE ALL SHARP EDGES, R.02 MIN.
 3. DO NOT SCALE FROM DRAWING.
 4. ALL MACHINING FLUIDS MUST BE FULLY SYNTHETIC, FULLY WATER SOLUBLE AND FREE OF SULFUR, SILICONE, AND CHLORINE.

DIMENSIONS ARE IN INCHES [MM]

TOLERANCES:
 .XX ±
 .XXX ±

ANGULAR ± °

MATERIAL	N/A	FINISH	N/A μinch
----------	-----	--------	-----------

LIGO CALIFORNIA INSTITUTE OF TECHNOLOGY
 MASSACHUSETTS INSTITUTE OF TECHNOLOGY

ADVANCED LIGO SUB-SYSTEM **AOS**

SYSTEM **ADVANCED LIGO** **SUB-SYSTEM** **AOS**

NEXT ASSY D1000635, D1000636

PART NAME HARTMANN SENSOR, ASSEMBLY

DESIGNER	ADELAIDE	04-JAN-2010	SIZE	DWG. NO.	REV.
DRAFTER	M. JACOBSON	24 MAR 2010	B	D1000657	v6
CHECKER	P. VEITCH	06-JUL-2012	SCALE:	1:2	PROJECTION:
APPROVAL	A. BROOKS	22-NOV-2013	SCALE:	1:2	PROJECTION:

SHEET 1 OF 1