

**ITM08 HR Integrated Scatter**

Test Date	May 16-20, 2012		
Author(s)	Liyuan Zhang, Margot Phelps, Patrick Murphy, GariLynn Billingsley		
Approval(s)	GariLynn Billingsley		
Specification Doc.	LIGO-E0900041	Specification	Not specified in E0900041
Procedure Doc.	LIGO-E1000863		
1 st Scan (Mean \pm Error*)	13 \pm 2 ppm		
2 nd Scan (Mean \pm Error*)	14 \pm 2 ppm		
Conclusion	Qualified.		

*An estimated systematic error from previous multiple measurements with one LIGO-1 mirror.

Discussions and Comments:

Two scans of TIS measurement are carried out on ITM08 HR surface with positioning the arrow on barrel at Y+ direction. One is a full coverage scan over a 48 mm diameter aperture with the beam and step sizes of 0.3 mm and other a sampling scan over a 160 mm diameter aperture with the same beam size of 0.3 mm and step size of 1.0 mm, as shown in Figs. 1 and 2 respectively. The system was checked and calibrated with a 1" HR mirror (No.8128).

ITM08 HR Integrated Scatter

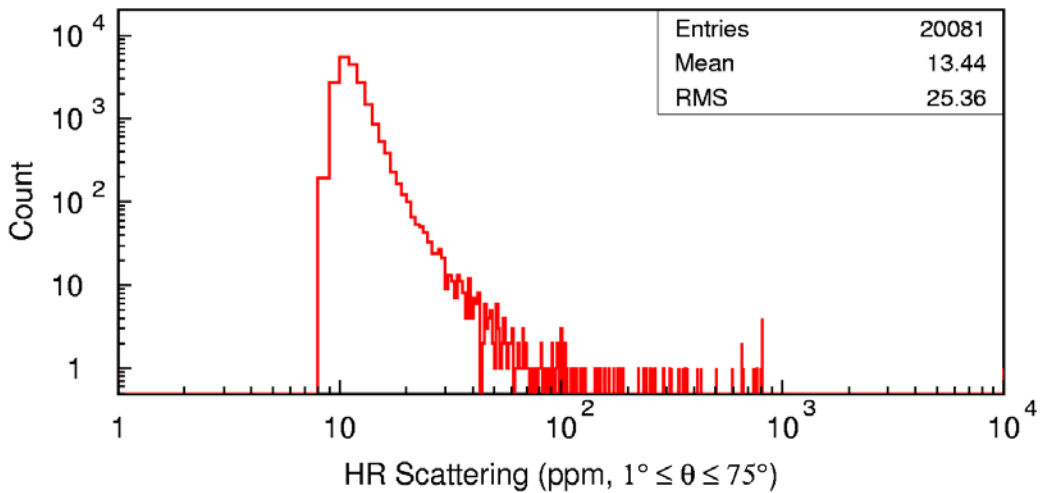
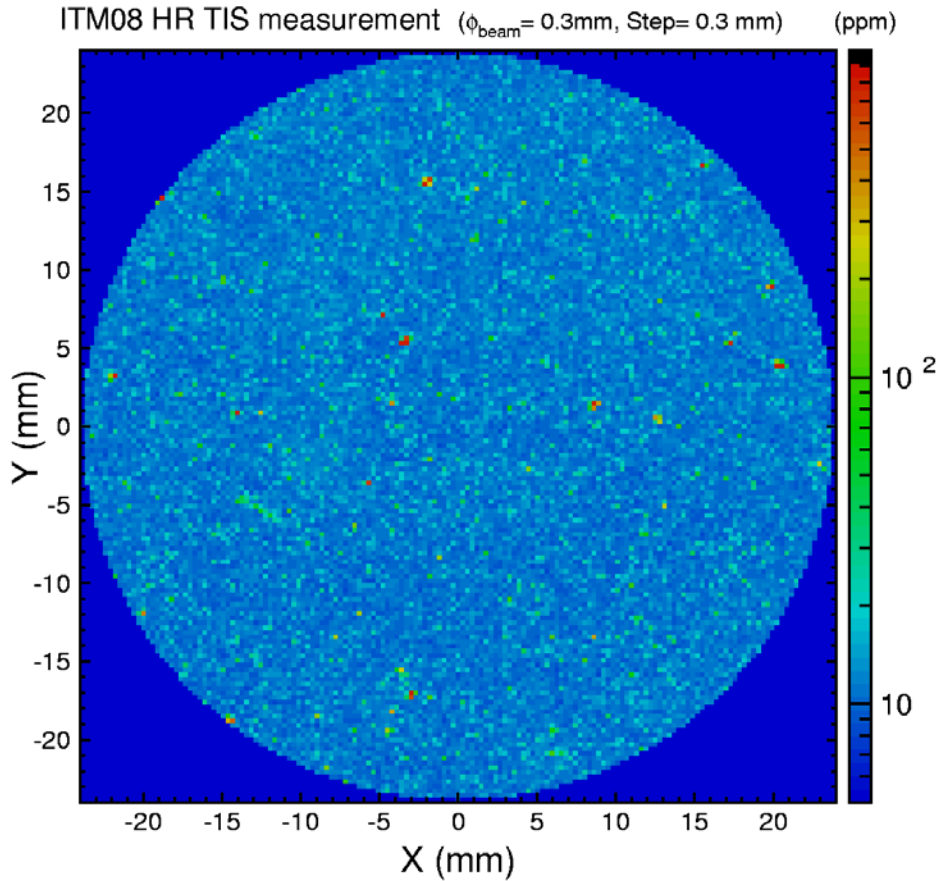


Fig. 1 ITM08 HR TIS measurement over a 48 mm diameter aperture.

ITM08 HR Integrated Scatter

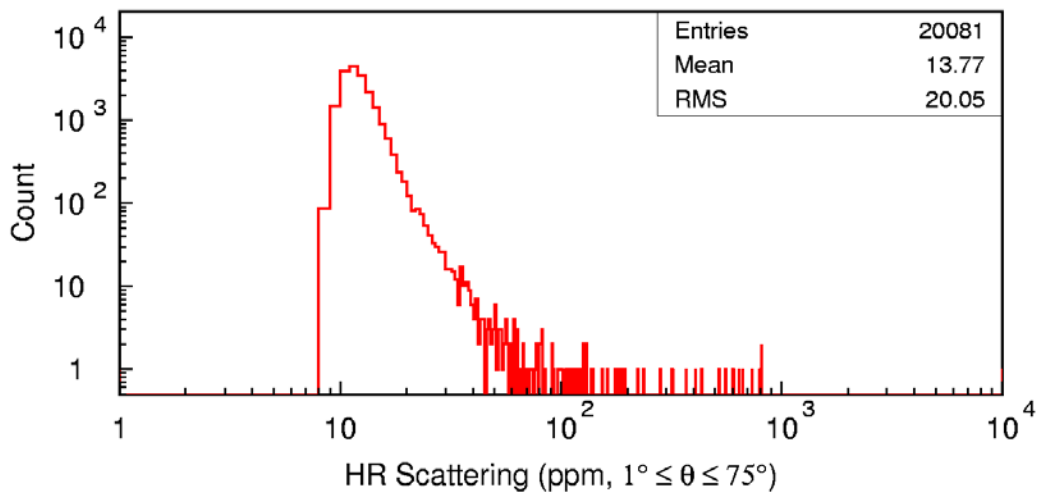
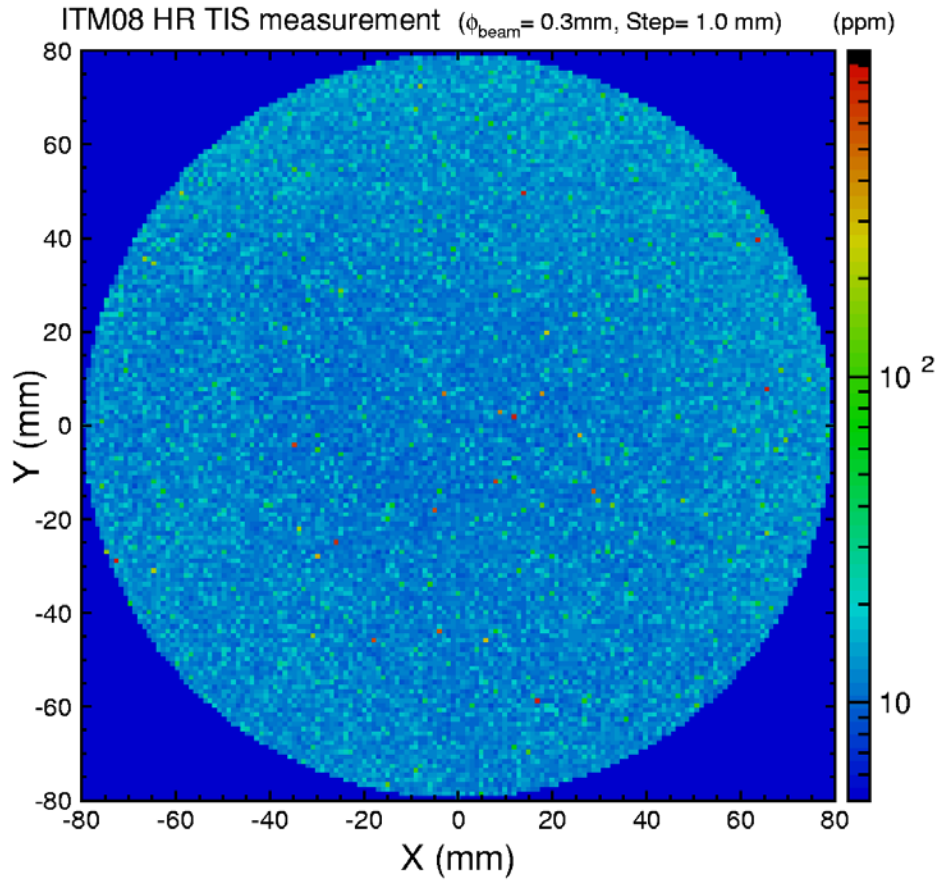


Fig. 2 ITM08 HR TIS measurement over a 160 mm diameter aperture.