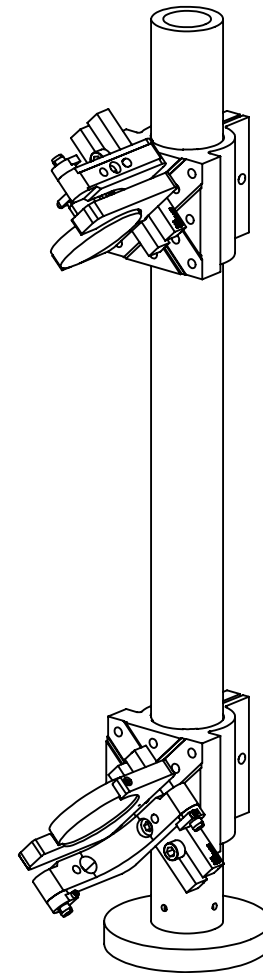
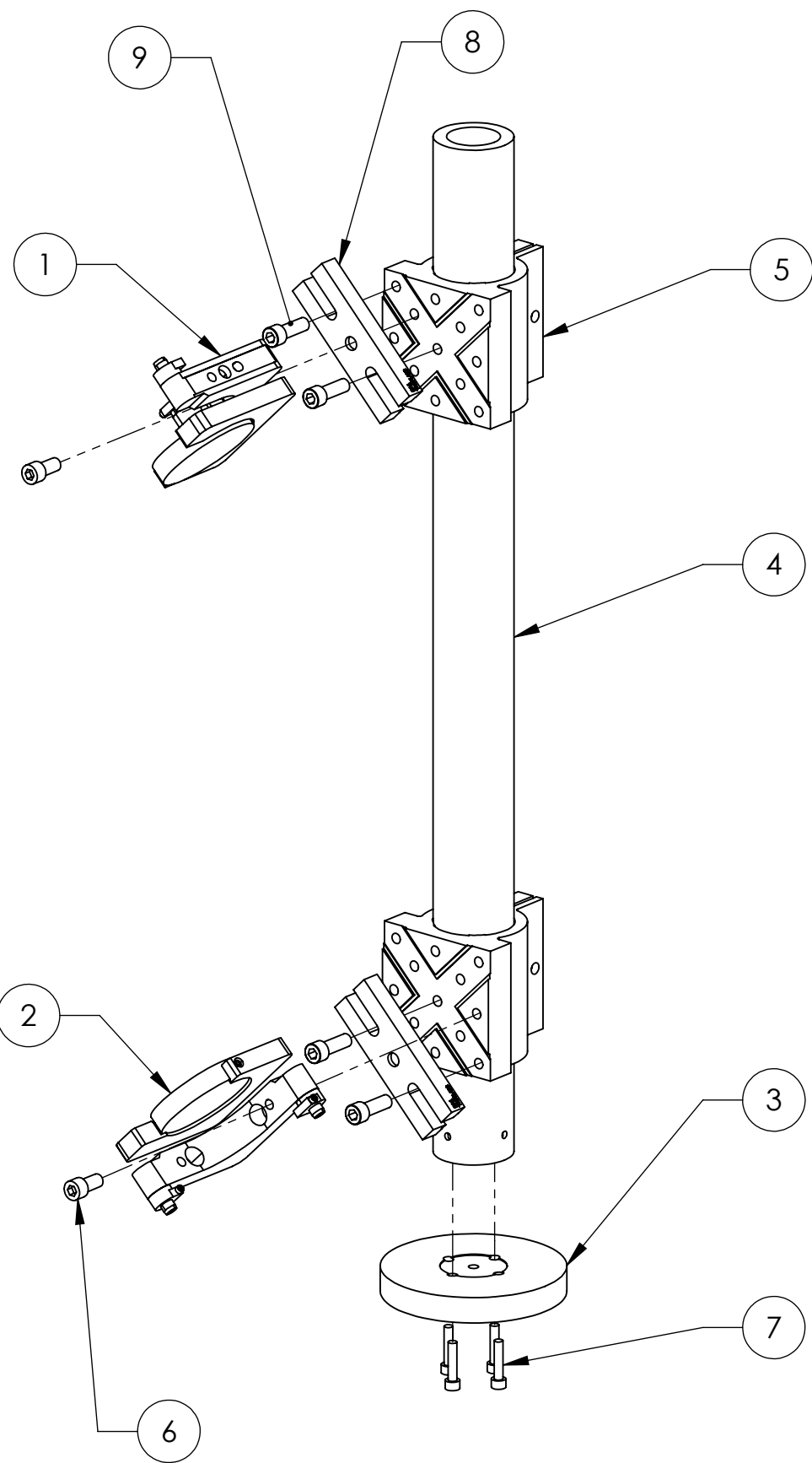


D1200927 Periscope, HAM-1, ISC, aLIGO, PART PDM REV: X-005, DRAWING PDM REV: X-001

NOTES CONTINUED:  
 5

REV.	DATE	DCN #	DRAWING TREE #
-	-	-	-
-	-	-	-
-	-	-	-



9	MCMaster_92196A540 or Equivalent	SHCS, 1/4"-20x0.75" (Fully Threaded)	18-8 SSSL	4	4
8	D1002059	ISC MOUNTING BASE - DOUBLE	6061-T6 Al	2	2
7	92200A197	SHCS 8-32 X .75" SSSL	300 SSSL	4	4
6	MCMaster_92196A537	SHCS, 1/4"-20x.50"	AISI 304	2	2
5	D990464-A	BRACKET, POST MIRROR MOUNT (OPTO SIGMA PN: 148-3410)	6005-T5	2	2
4	D990447	POST, ETM Beam Dump	6061-T6 Al	1	1
3	D990453	Base, rod Mount, Long	304 SSSL	1	1
2	2" OPTIC	2" OPTIC	TRANSPA RENT GLASS	2	2
1	ixm200.c2-LH	2" MIRROR MOUNT - LH	6061-T6 Al	2	2
ITEM NO.	PART NUMBER	DESCRIPTION	MATERIA L	RE SPA Q RE	TOT AL

PARTS LIST

NOTES AND TOLERANCES: (UNLESS OTHERWISE SPECIFIED)				LIGO CALIFORNIA INSTITUTE OF TECHNOLOGY MASSACHUSETTS INSTITUTE OF TECHNOLOGY		PART NAME	
DIMENSIONS ARE IN INCHES				ADVANCED LIGO		Periscope, HAM-1, ISC, aLIGO	
TOLERANCES: .XX ± .XXX ±				SUB-SYSTEM ISC		DESIGNER sbarnum 22 MAR 2012	
ANGULAR ± *				NEXT ASSY D1000313		DRAFTER SBARNUM 13 JUN 2011	
MATERIAL N/A				FINISH N/A μinch		CHECKER	
						APPROVAL	
						SIZE DWG. NO. B D1200927	
						REV. v1	
						SCALE: 1:3 PROJECTION: SHEET 1 OF 1	