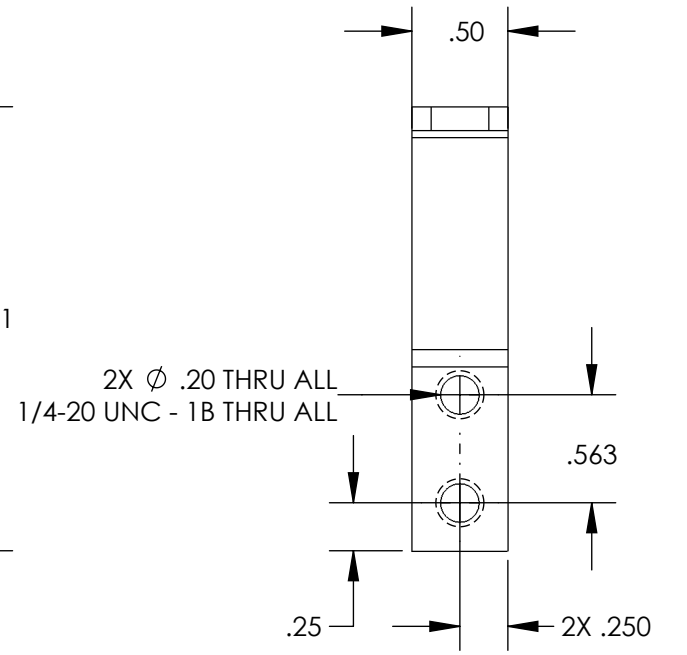
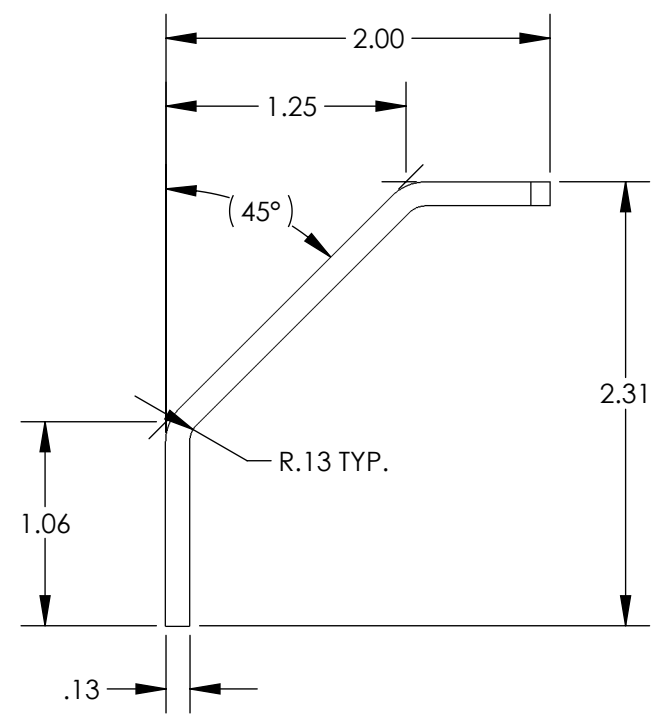
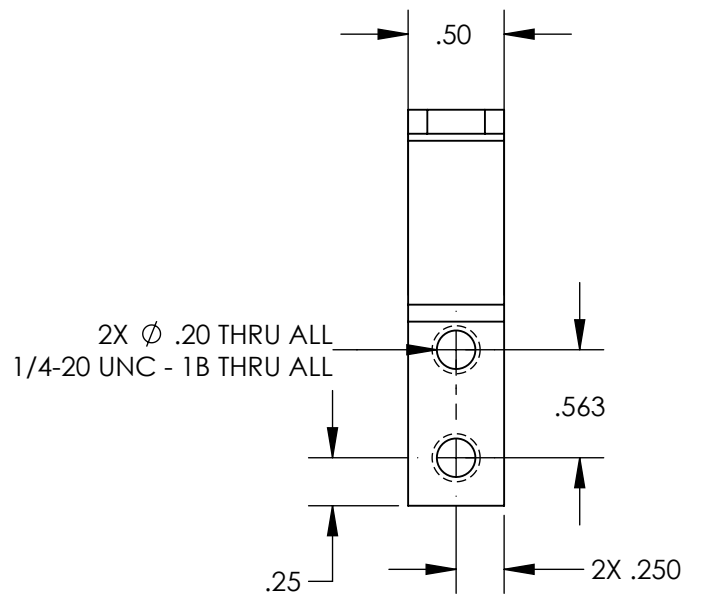
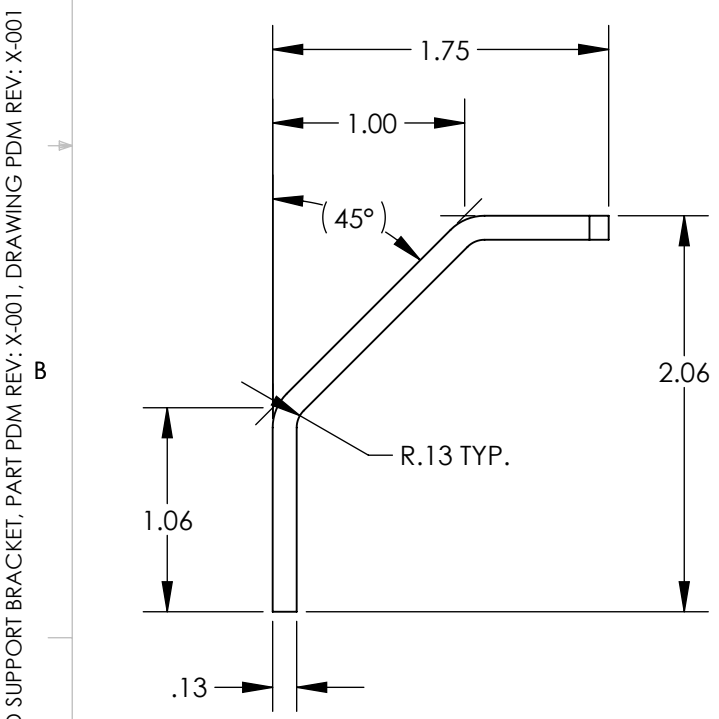
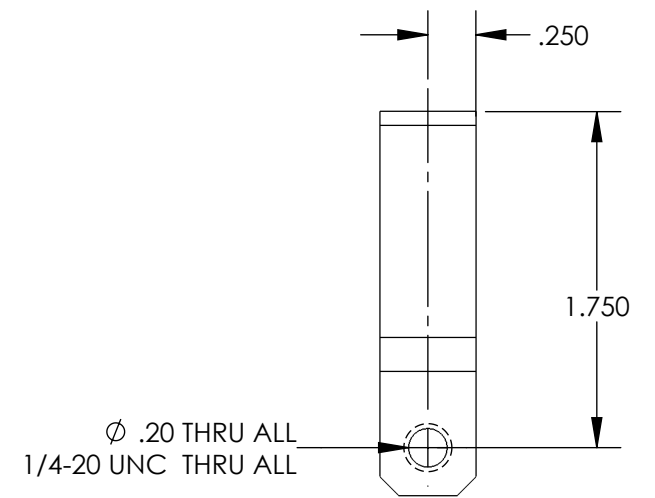
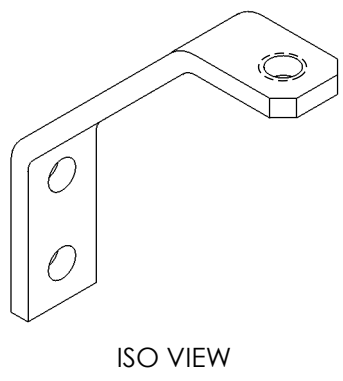
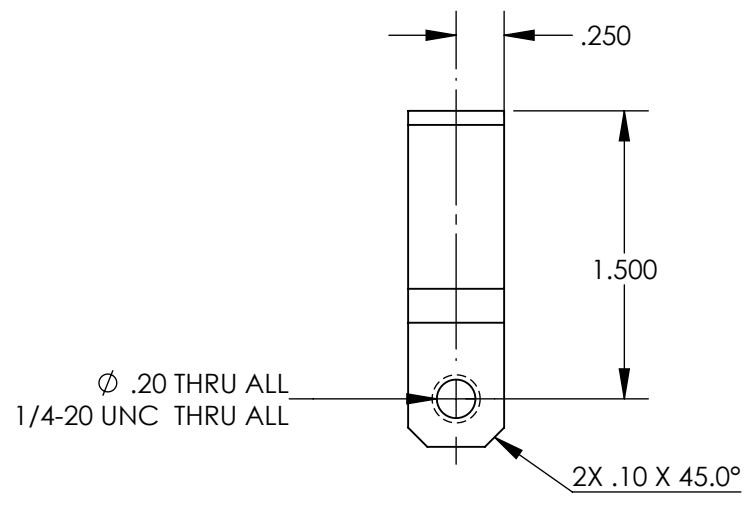


NOTES CONTINUED:
 5. SCRIBE, ENGRAVE, LASER MARK OR MECHANICALLY STAMP (NO DYES OR INKS) A UNIQUE THREE DIGIT SERIAL NUMBER & REVISION NUMBER ON EACH PART. SERIAL NUMBERS START AT 001 FOR THE FIRST ARTICLE AND PROCEED CONSECUTIVELY. BAG AND TAG PARTS WITH THEIR DRAWING PART NUMBER, REVISION, VARIANT OR "TYPE" (IF APPLICABLE), AND QUANTITY. IF PARTS ARE TOO SMALL TO SCRIBE, BAGGING AND TAGGING ALONE IS SUFFICIENT.
 EXAMPLE (PART): 001-v1
 EXAMPLE (TAG): DXXXXXX-VY, TYPE-XX, QTY: TBD

- 7. MACHINE ALL SURFACES TO REMOVE OXIDES AND MILL FINISH, USE OF ABRASIVE REMOVAL TECHNIQUES IS NOT ALLOWED. REFER TO LIGO-E0900364
- 8. ALL PARTS SHALL BE MANUFACTURED IN ACCORDANCE WITH LIGO SPECIFICATION E0900364.
- 9. ALL MATERIAL IS TO BE VIRGIN MATERIAL (i.e. NO WELD REPAIRS, PLUGS OR RECYCLED MATERIAL). NO REPAIRS SHALL BE MADE UNLESS APPROVED IN ADVANCE, AND IN WRITING, BY LIGO LABORATORY. REFER TO LIGO-E0900364.

REV.	DATE	DCN #	DRAWING TREE #
v1	02 JUN 2012	E1200567-x0	-
-	-	-	-
-	-	-	-



-101 DETAIL

-102 DETAIL

D1200824 ALIGO, OPLEV, ENCLOSURE LID SUPPORT BRACKET, PART PDM REV: X-001, DRAWING PDM REV: X-001

NOTES AND TOLERANCES: (UNLESS OTHERWISE SPECIFIED)				LIGO CALIFORNIA INSTITUTE OF TECHNOLOGY MASSACHUSETTS INSTITUTE OF TECHNOLOGY		PART NAME	
DIMENSIONS ARE IN INCHES				ADVANCED LIGO		ALIGO, OPLEV, ENCLOSURE LID SUPPORT BRACKET	
TOLERANCES: .XX ± .01 .XXX ± .005				SUB-SYSTEM AOS		DESIGNER E. JAMES	
ANGULAR ± 0.5°				MATERIAL 6061-T6 Al		DATE 24 MAY 2012	
				FINISH 63 μinch		DRAFTER E. SANCHEZ	
				NEXT ASSY D1200821, D1200822, D1200823		CHECKER SEE DCC	
						APPROVAL SEE DCC	
						SIZE DWG. NO. B D1200824	
						REV. v1	
						SCALE: 1:1 PROJECTION: SHEET 1 OF 1	