

A

B

C

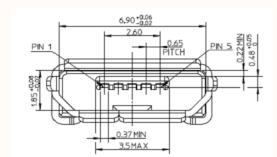
D

A

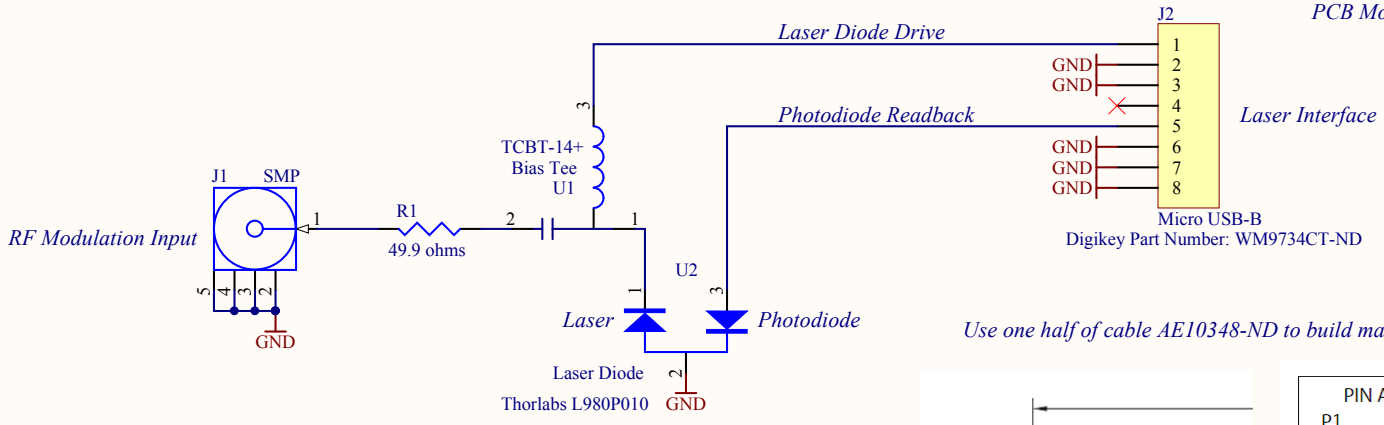
B

C

D



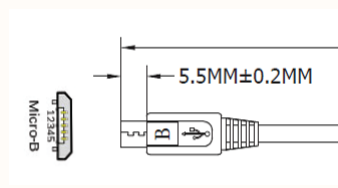
View Looking Into Micro USB-B
PCB Mounted Connector



Laser Interface

Micro USB-B
Digikey Part Number: WM9734CT-ND

Use one half of cable AE10348-ND to build mating connection



PIN ASSIGNMENT			
P1	RED	P2	1
1	WHITE	2	2
2	GREEN	3	3
3	BLACK	5	5
5	DRAIN + BRAID	SHELL	SHELL

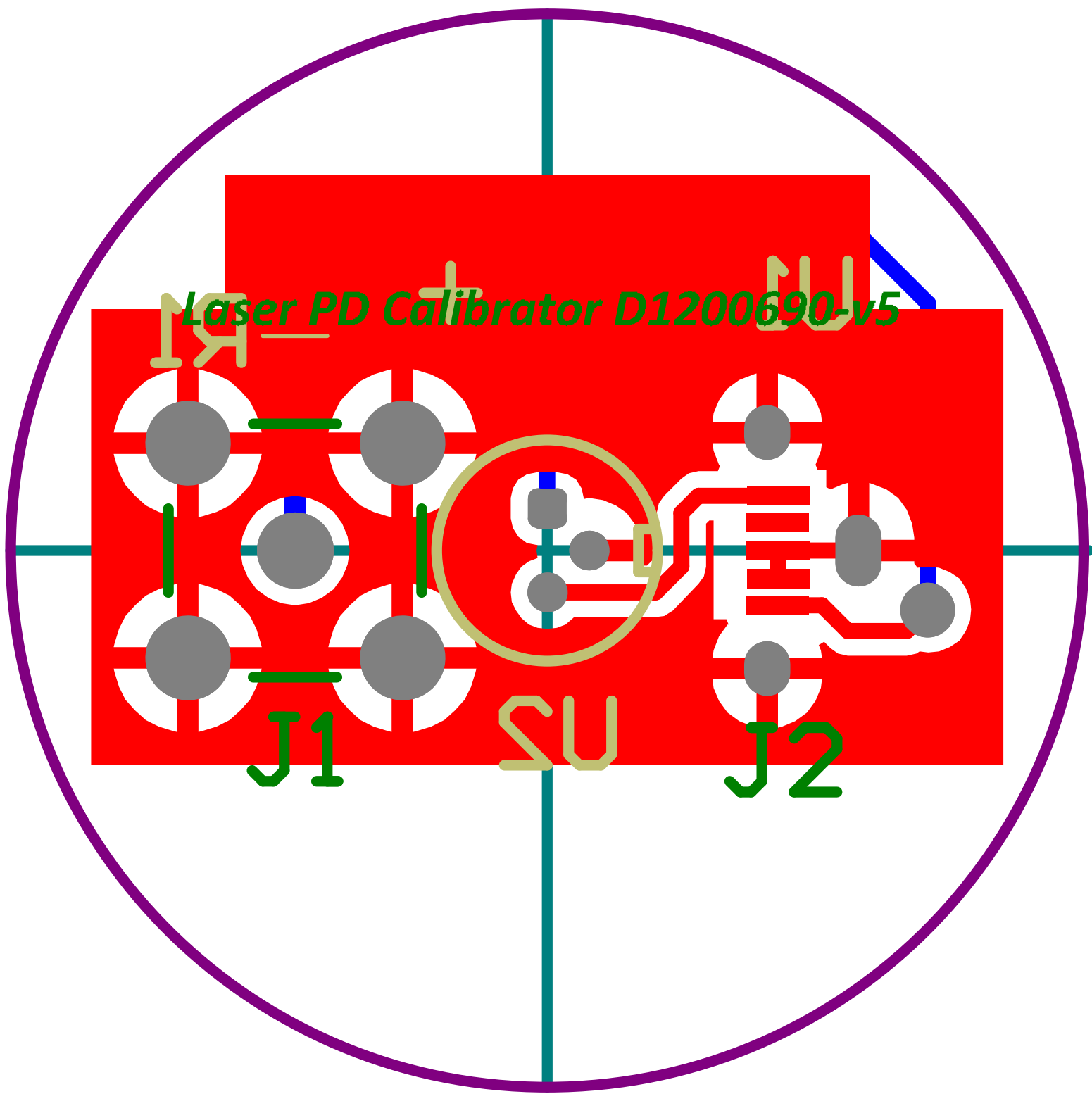
Part1
BOM Only
AE10348-ND

Revision History:

- Rev. 1 - Initial DCC entry
- Rev. 2 - Did some schematic cleanup of typos
- Rev. 3 - First PCB that was manufactured
- Rev. 4
 - Revised PCB and Schematic.
 - Fixed Microtech connector to be able to solder to PCB for added strength.
 - Moved in the standoff holes to better clear the lens tube.
 - Changed the laser diode from the VCSEL to the L980P010 diode.
 - Reduced diameter of PCB to clear lens tube better.
 - Changed from PCB standoffs, to simple screw mounting and spacer washers
- Rev. 5
 - Changed connectors from SMA to Limited Detent SMP, and from a circular micro style power feed to USB-B to make assembly more robust and easier to use

Last Edited: 22 June 2012

Title Laser PD Calibrator Head		LIGO Laboratory California Institute of Technology Massachusetts Institute of Technology		LIGO	
Size: A	DCC Number: D1200690	Revision: v5	Engineer: R. Abbott	Date: 9/16/2014	Time: 12:21:37 PM
File: C:\Rich's Files\Mycadfiles\ISC\Laser Calibrator\LaserCal v5.SchDoc				Sheet 1 of 1	



Description	Designator	Digikey Part Number	Manufacturer Part Number	MiniCircuits	Quantity
SMP Connector	J1	ARF1595-ND			1
USB Connector	J2	WM9734CT-ND			1
Mating Cable/ Connector	Part1	AE10348-ND			1
Resistor	R1	TNP49.9ABCT-ND			1
MiniCircuits Bias Tee	U1			TCBT-14+	1
Laser Diode	U2		Thorlabs L980P010		1