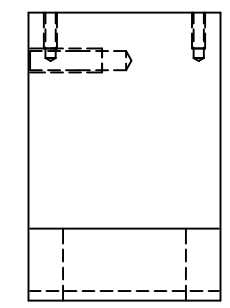
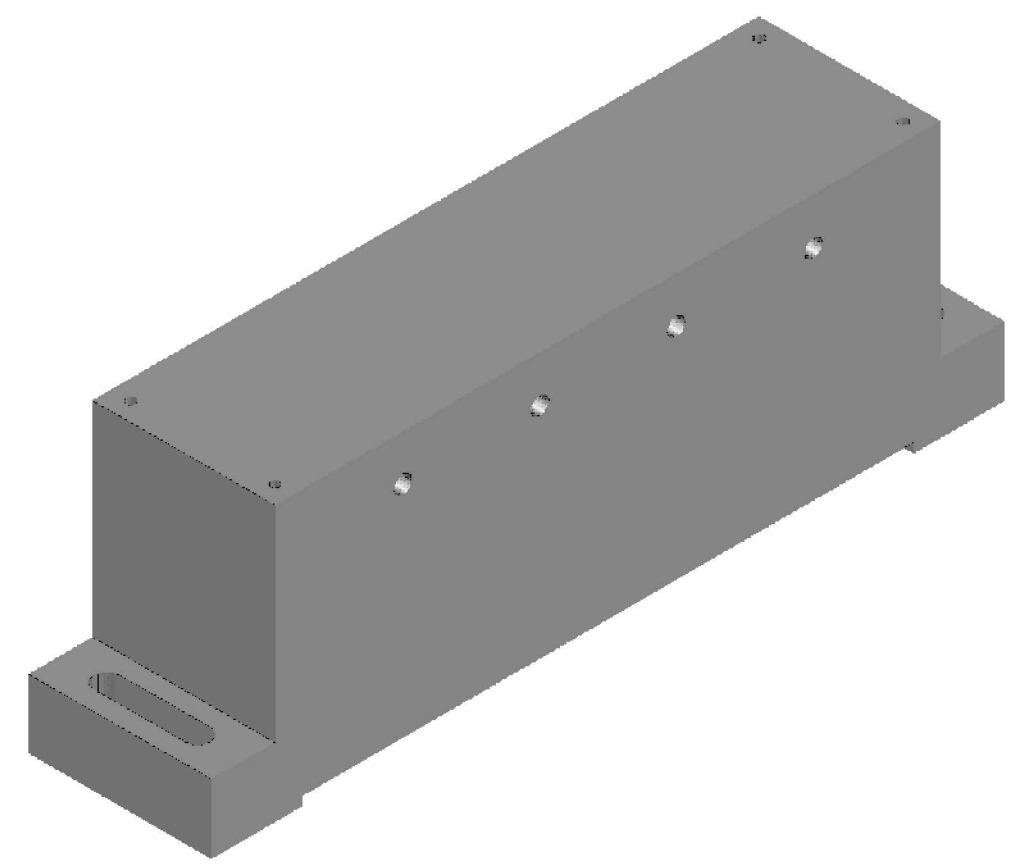
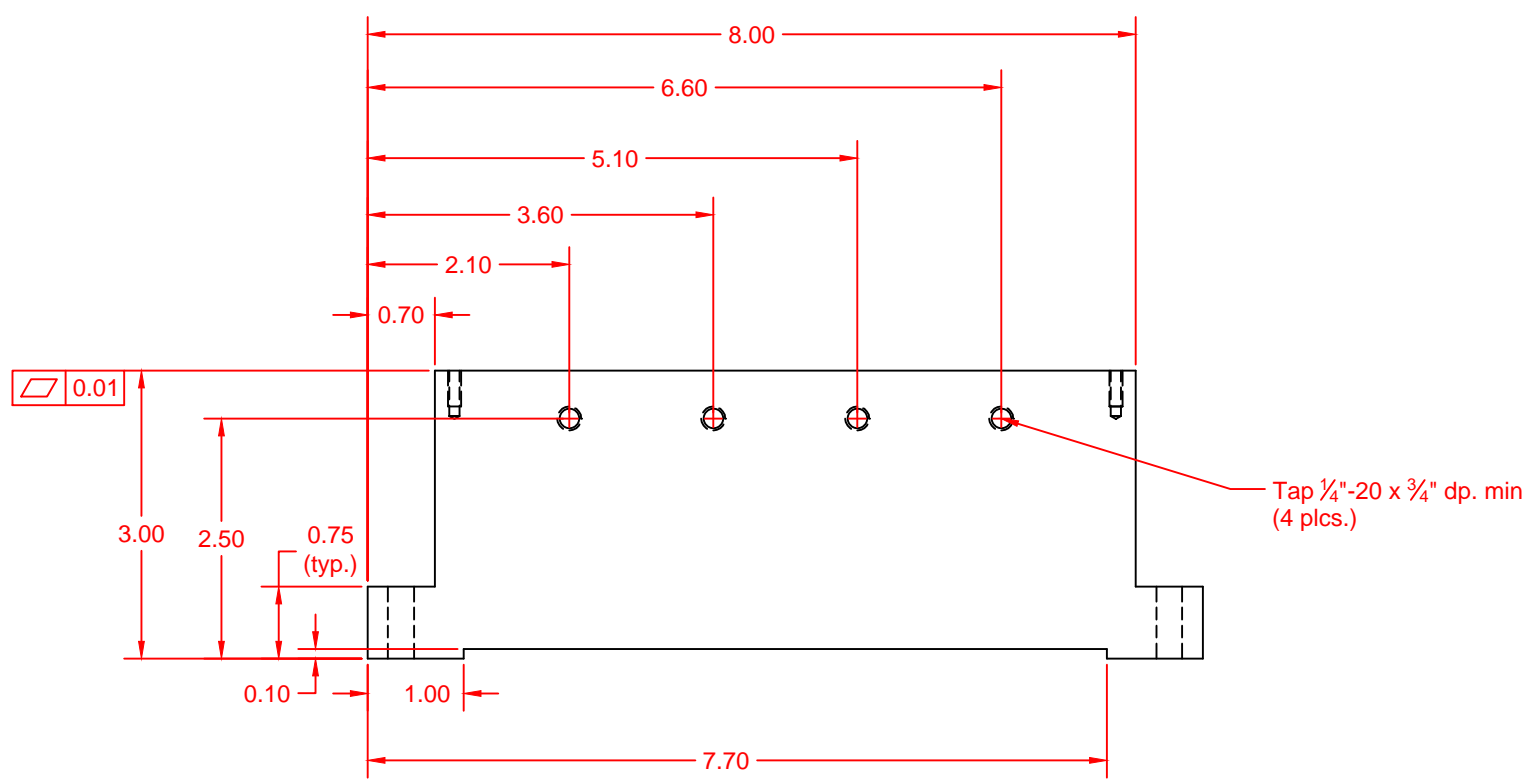
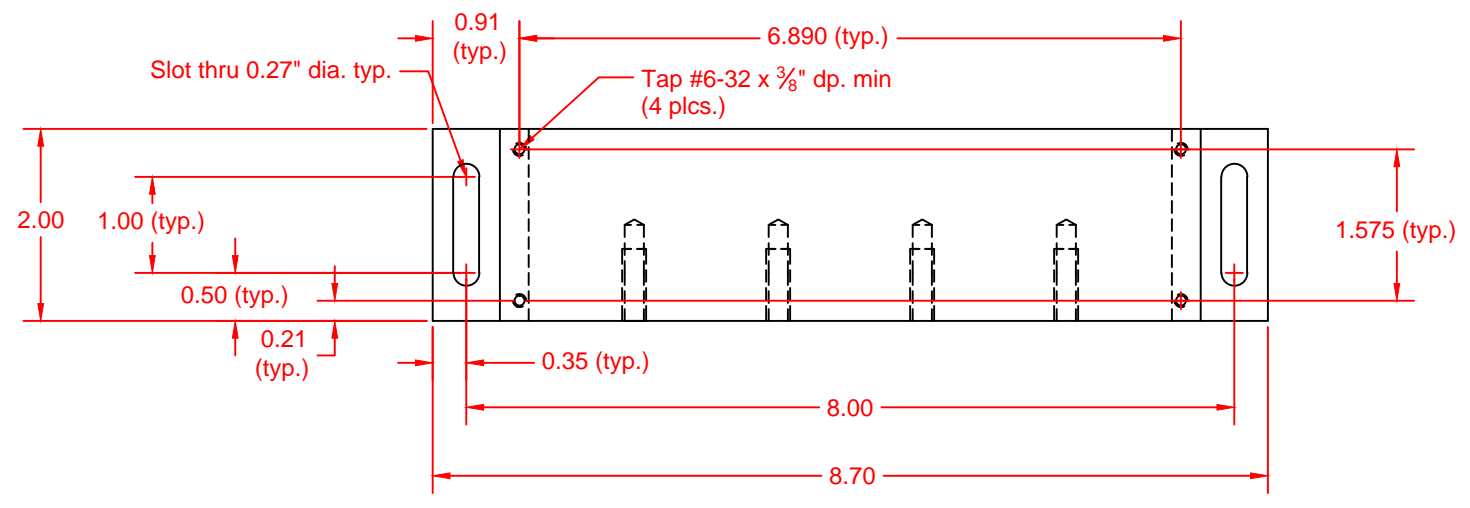


8 7 6 5 4 3 2 1

D
C
B
A



| | | | | | | | |
|--|--|--|--|---|--|---|--|
| NOTES AND TOLERANCES: (UNLESS OTHERWISE SPECIFIED) DIMENSIONS ARE IN INCHES TOLERANCES: .XX ± 0.01 .XXX ± 0.005 ANGULAR ± * | | 1. INTERPRET DRAWING PER ASME Y14.5-1994. 2. REMOVE ALL SHARP EDGES, R.02 MIN. 3. DO NOT SCALE FROM DRAWING. | | CALIFORNIA INSTITUTE OF TECHNOLOGY MASSACHUSETTS INSTITUTE OF TECHNOLOGY | | PART NAME Photon Calibrator Laser Block | |
| MATERIAL 6061 T6 ALUMINUM | | FINISH N/A | | NEXT ASSY Pcal Laser Block S-Pol Adapter | | DESIGNER J BERLINER 17 APR 12 DRAFTER J BERLINER 4 MAY 12 CHECKER R SAVAGE 4 MAY 12 APPROVAL | |
| | | | | SIZE DWG. NO. B D1200681 | | REV. A | |
| | | | | SCALE: 1:2 PROJECTION: | | SHEET 1 OF 1 | |

8 7 6 5 4 3 2 1