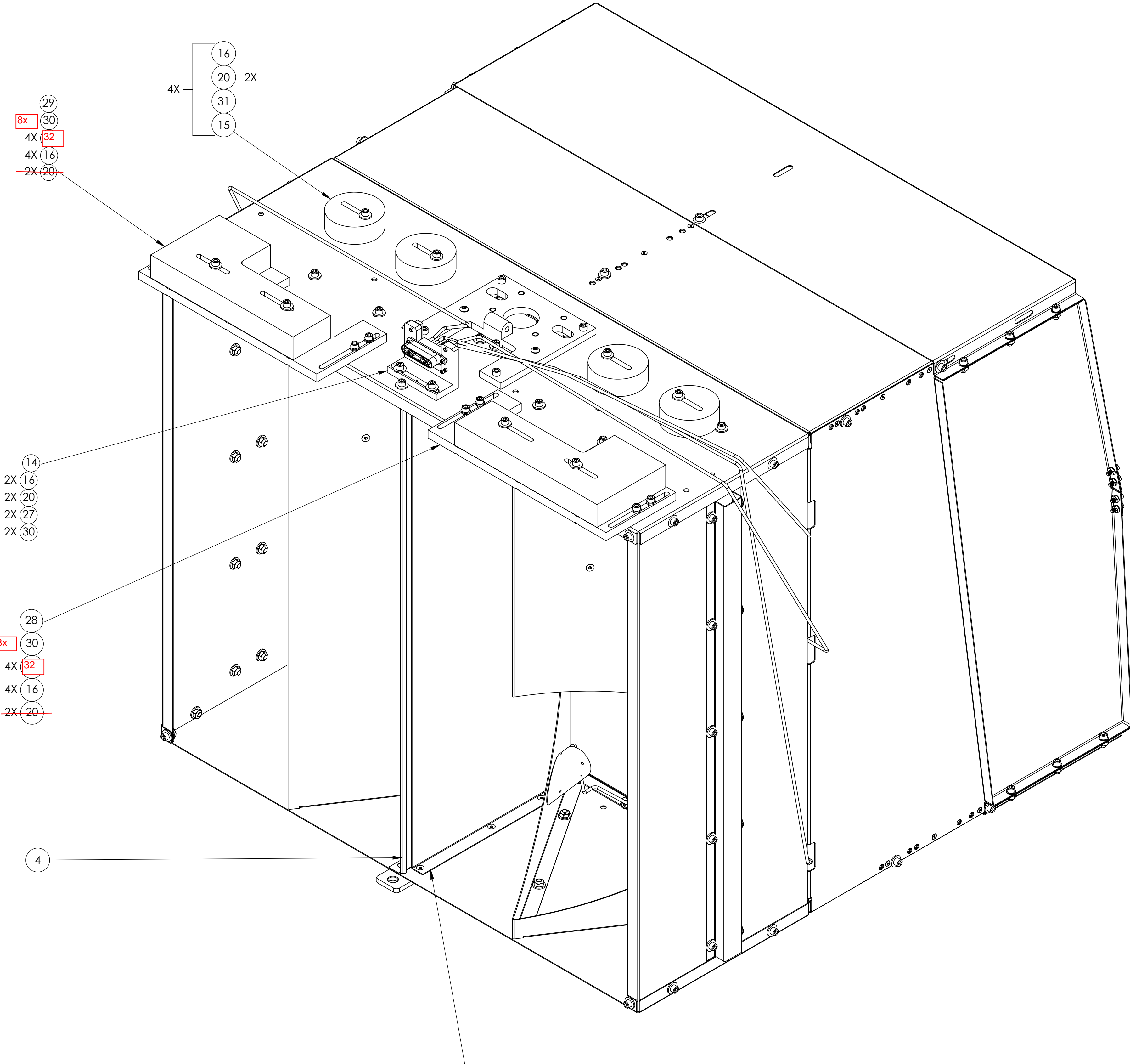


- NOTES CONTINUED:
- SCREWS MUST BE OXIDIZED BY MEANS OF AIR FURNACE
 - TORQUE SHCS TO VALUES SPECIFIED IN LIGO-T1100066.
 - APPROXIMATELY WEIGHT = 162.31LBS.

REV.	DATE	DCN #	DRAWING TREE #
v1	6 JUN 2012	E1100335-v4	-
v2	12 DEC 2012	-	-
V3	21 FEB 2013	-	-



ITEM NO.	PART NUMBER	DESCRIPTION	MATERIAL	BSC1-H1/QTY
34	D1003025	SLC PHOTODETECTOR HOUSING	304 SSSL	4
32	C-2014-N	SOCKET HEAD CAP SCREW, SHC, 1/4-20 X 7/8"	18-8 SSSL	8
31	C-2024-N	SOCKET HEAD CAP SCREW, SHC, 1/4-20 x 1-1/2" L	18-8 SSSL	4
30	WF-25	WASHER, FLAT 1/4", .468" OD, .032" Thk	300 SSSL	182
29	D1200610	COUNTERWEIGHT ASSY_LEFT SIDE	N/A	1
28	D1200665	COUNTERWEIGHT ASSY_RIGHT SIDE	N/A	1
27	92200A541	SHCS, .25-20 x .88, 300 SSSL, MS16995-51	300 SSSL	2
26	92196A114	SHCS 4-40 x 7/8" L	18-8 SSSL	2
25	98019A330	WASHER #10, NASM 15795-808	300 SSSL	18
24	FA-606-NA	FHSC, 6-32 X 3/8 LG, AG PLATED	Ag-PLATED 300 SSSL	12
23	BU-2012-N	SCREW, BUTTON HD, SOC, .25-20 X 3/4" LG.	18-8 SSSL	2
22	FA-2412-N	FHSC, 10-24 X 3/4 LG, MS24671-22 (OR EQUIV.)	300 SSSL	18
21	92200A540	SHCS, 1/4-20 X 3/4" LG, MS16995-50 (OR EQUIV)	18-8 SSSL	4
20	98019A355	WASHER FLAT 1/4", .63" OD, .05"-.08" Thk, MIL-15795-810	300 SSSL	182
19	N-1024-A	HEX NUT, #10-24, AG PLATED,(OR EQUIVALENT)	Ag-PLATED 300 SSSL	18
18	C-2008-NA	SHCS, 1/4-20 x .50 AG PLATED	Ag-PLATED 300 SSSL	12
17	92200A537	SCREW SHCS, 1/4-20 UNC-2A X 1/2" LG, FULL THREAD	300 SSSL	73
16	N-2520-A	U-C COMP. NUT, HEX .25-20 SILVER PLATED, 18-8 SSSL	Ag-PLATED 300 SSSL	93
15	D1200835	SLC ACB, TWO POUND WEIGHT	304 SSSL	4
14	D1001346	ALIGO, ASSY, CABLE BRACKET, HAM TABLE	N/A	1
13	D1003111	SLC PHOTODETECTOR CABLE LOWER ASSY	N/A	1
12	D1003013	ARM CAVITY BAFFLE PD ASSY	N/A	4
11	D1100359	ACB ADJUSTABLE EXTENDER SHELF ASSY	N/A	1
10	D1100391	ACB SHELF ASSY	N/A	1
9	D1002173	ARM CAVITY BAFFLE HINGE ASSY	N/A	1
8	D1101427	BRACE, LIFTING, ARM CAVITY BAFFLE	6061-T6 Al	1
7	D1001363	ACB SIDE REINFORCING HATSECTION	304 SSSL	2
6	D1001365	ARM BAFFLE MIDDLE REINFORCING PLATE	18 GAUGE 304 SSSL	2
5	D1101796	ARM CAVITY BAFFLE CTR, MIRROR SKIN	18 GAUGE, 304 SSSL	1
4	D1000976	ARM CAVITY BAFFLE CTR SKIN	18 GAUGE 304 SSSL	1
3	D1000974	ARM CAVITY BAFFLE TOP SKIN	14 GAUGE 304 SSSL	1
2	D1000975	ARM CAVITY BAFFLE BTM SKIN	18 GAUGE 304 SSSL	1
1	D1200296	ACB 1 HOLE RIGHT QPD SKIN (w pd)	18 GAUGE, 304 SSSL	1

NOTE 1

C-2012-N and C-2014-N screws are available if longer screws are needed.

Nominal starting Balance Weights for LBSC1 and LBSC3 are: D1001826 - 2 each D1200835 - 2 each

NOTES AND TOLERANCES: (UNLESS OTHERWISE SPECIFIED)

DIMENSIONS ARE IN INCHES

TOLERANCES:
 .XX ± .02
 .XXX ± .010

ANGULAR ± 0.5°

MATERIAL	N/A	FINISH	N/A μinch
----------	-----	--------	-----------

LIGO CALIFORNIA INSTITUTE OF TECHNOLOGY
 MASSACHUSETTS INSTITUTE OF TECHNOLOGY

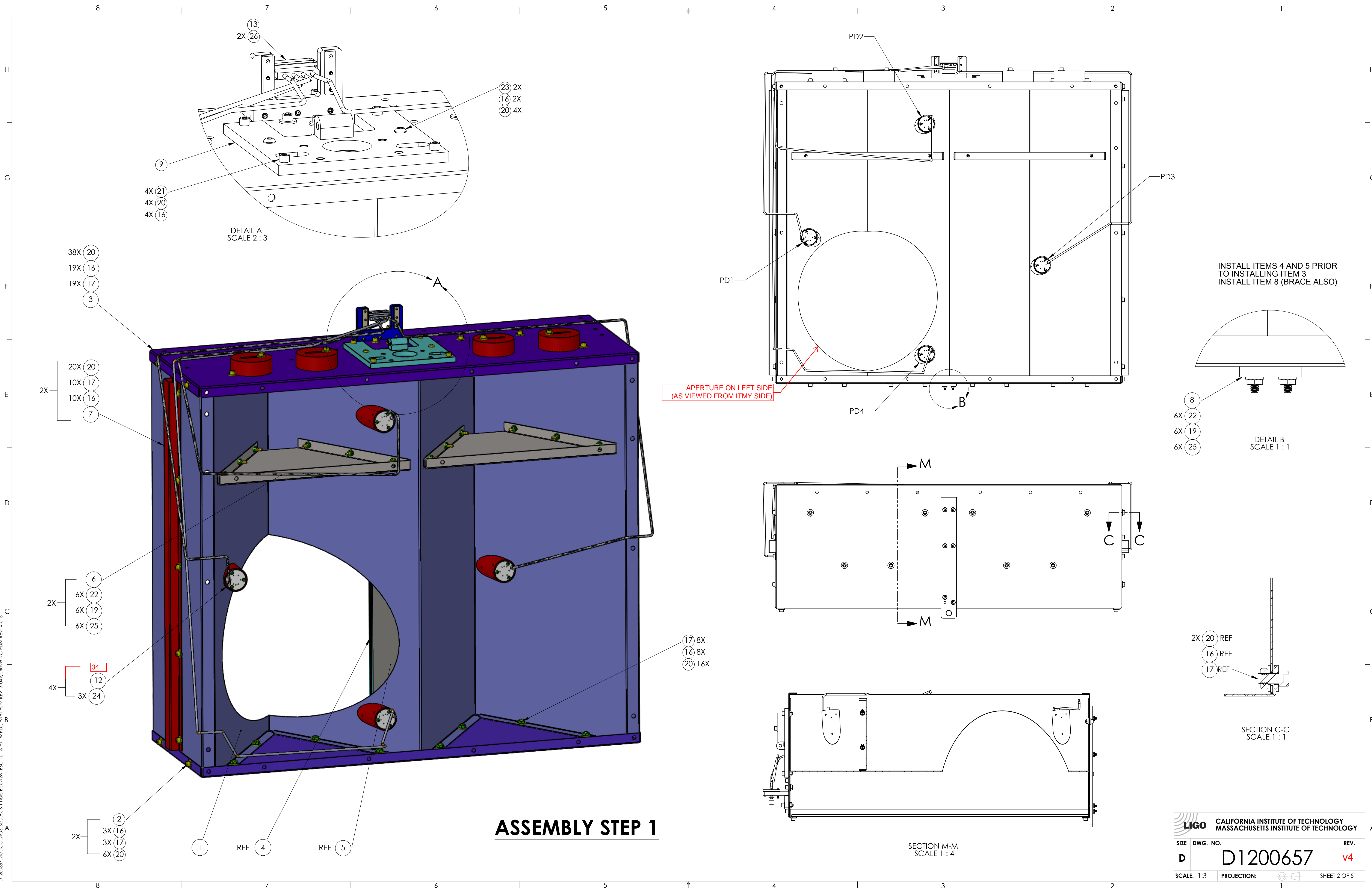
SYSTEM: ADVANCED LIGO SUB-SYSTEM: AOS NEXT ASSY: D0901376

PART NAME: ACB, 1 HOLE BOX ASSY, BSC1-L1 & H1

DESIGNER	N.Nguyen	01 Jun 2010	SIZE	D	DWG. NO.	D1200657	REV.	v4
DRAFTER	TG. NGUYEN	6 JUN 2012	CHECKER	L. AUSTIN	APPROVAL	M. SMITH	SCALE:	1:3

PROJECTION: SHEET 1 OF 5

D1200657_AccLIGO_ACS_SLC_ACB_1 Hole Box Assy, BSC1-L1 & H1 (w PD) PART PDM REV: X-049, DRAWING PDM REV: X-015

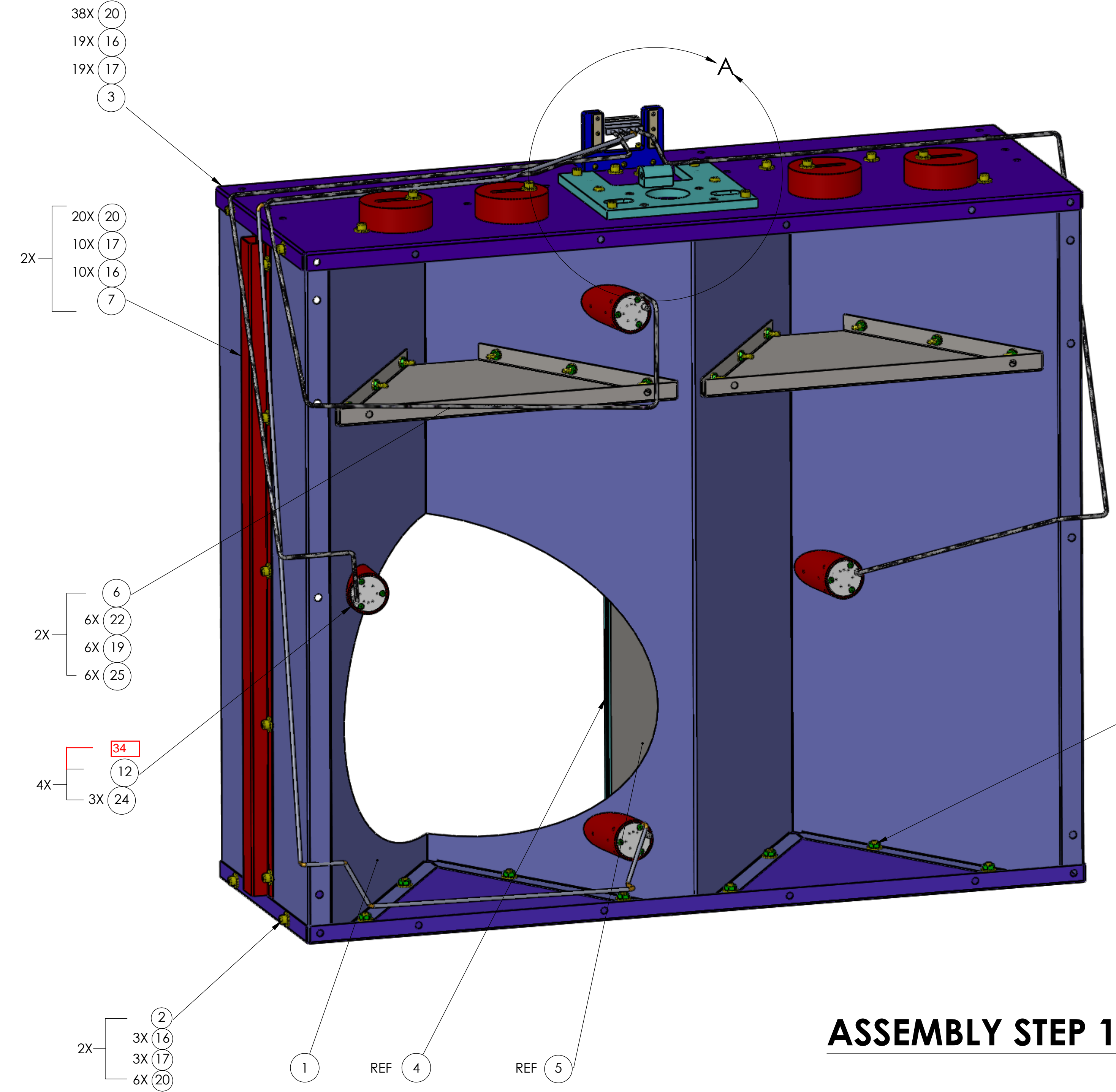
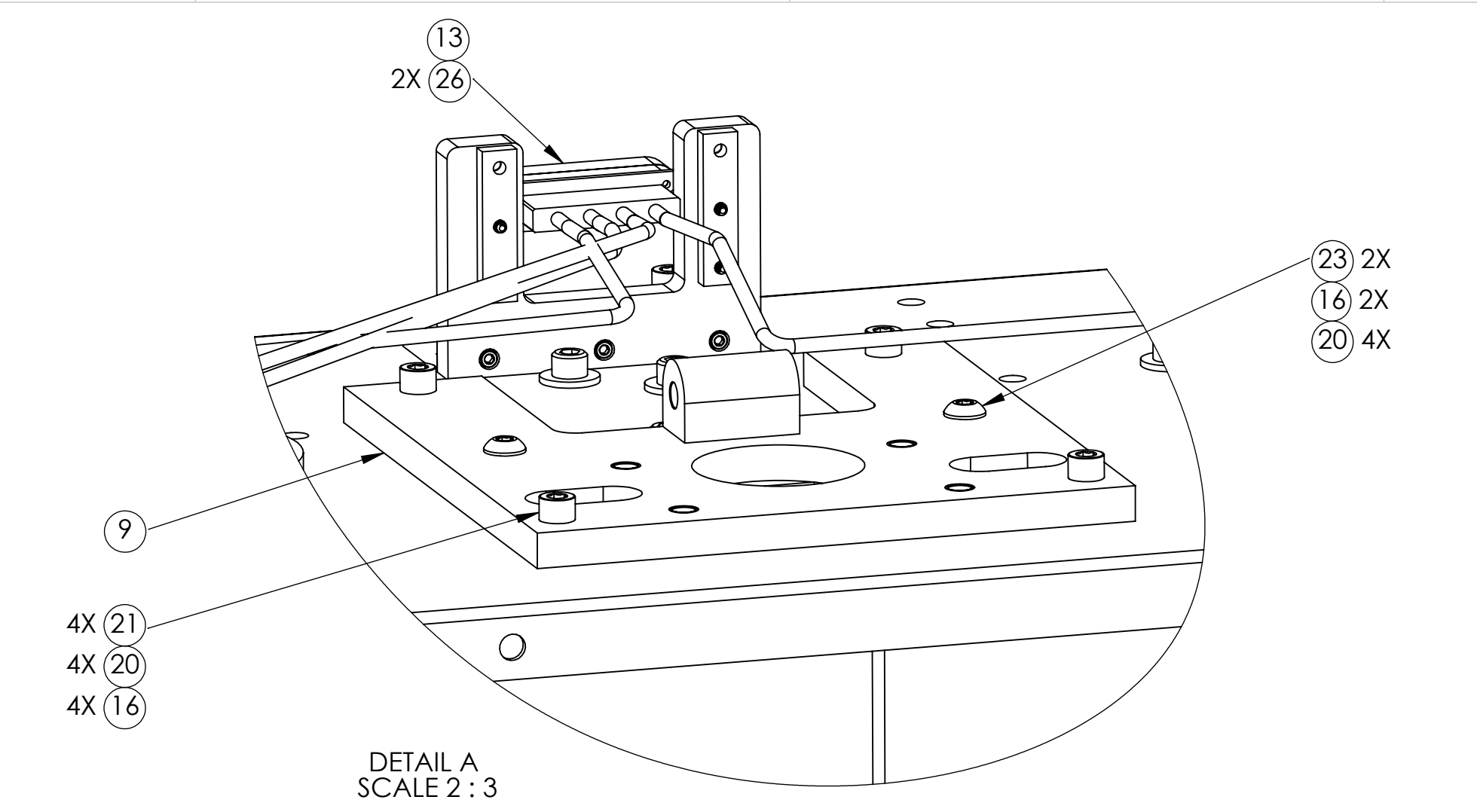


D1200657_Audio_ACS_1 Inile Box Assy. BSC1-L1 & H1 (w/ PD) PART PDM REV: X-049; DRAWING PDM REV: X-015

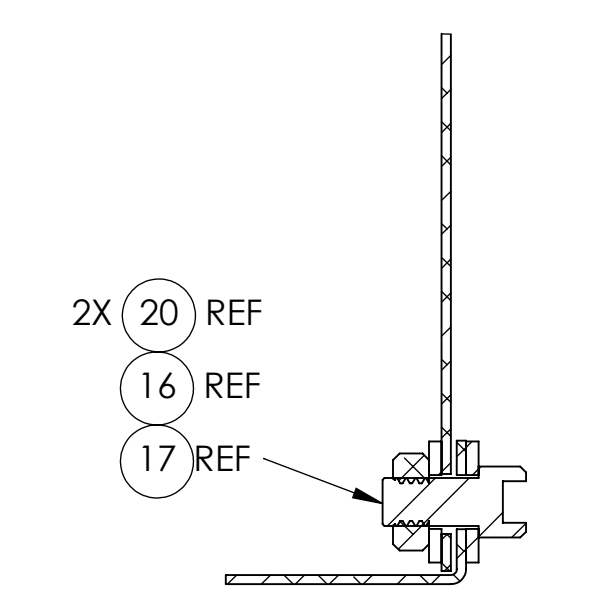
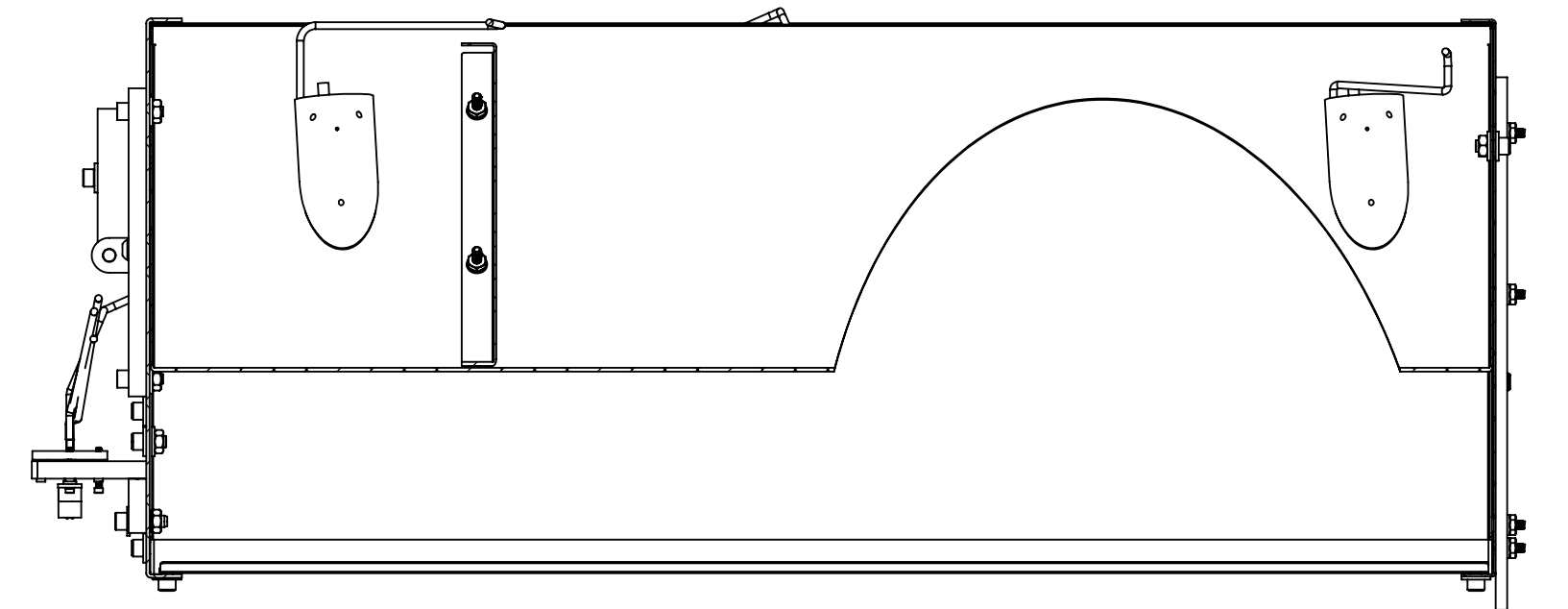
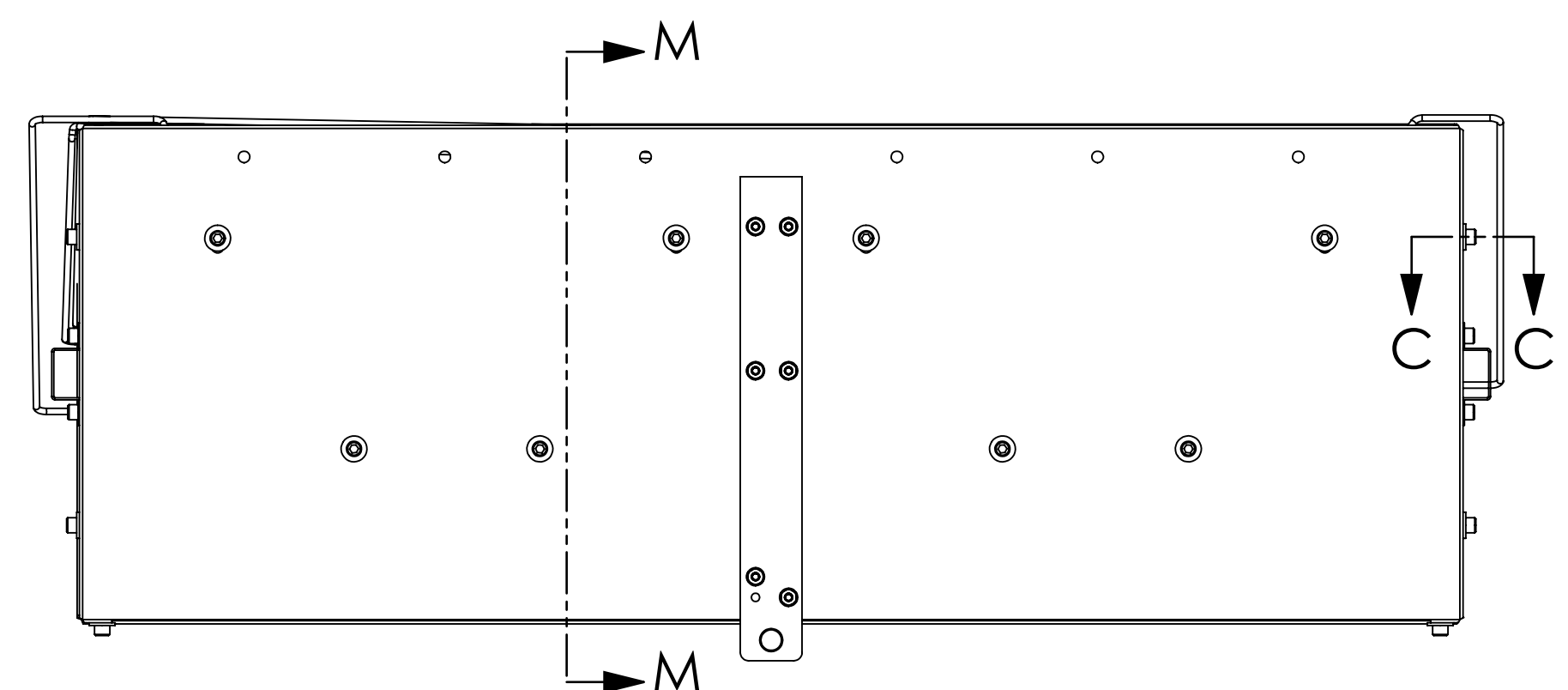
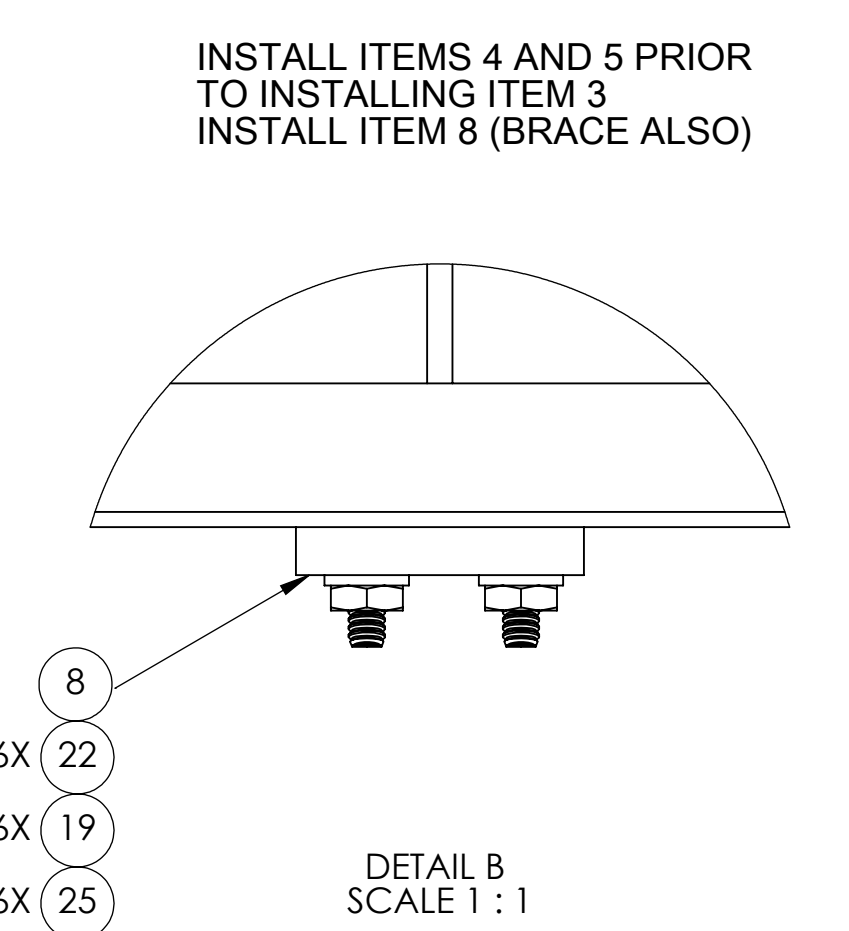
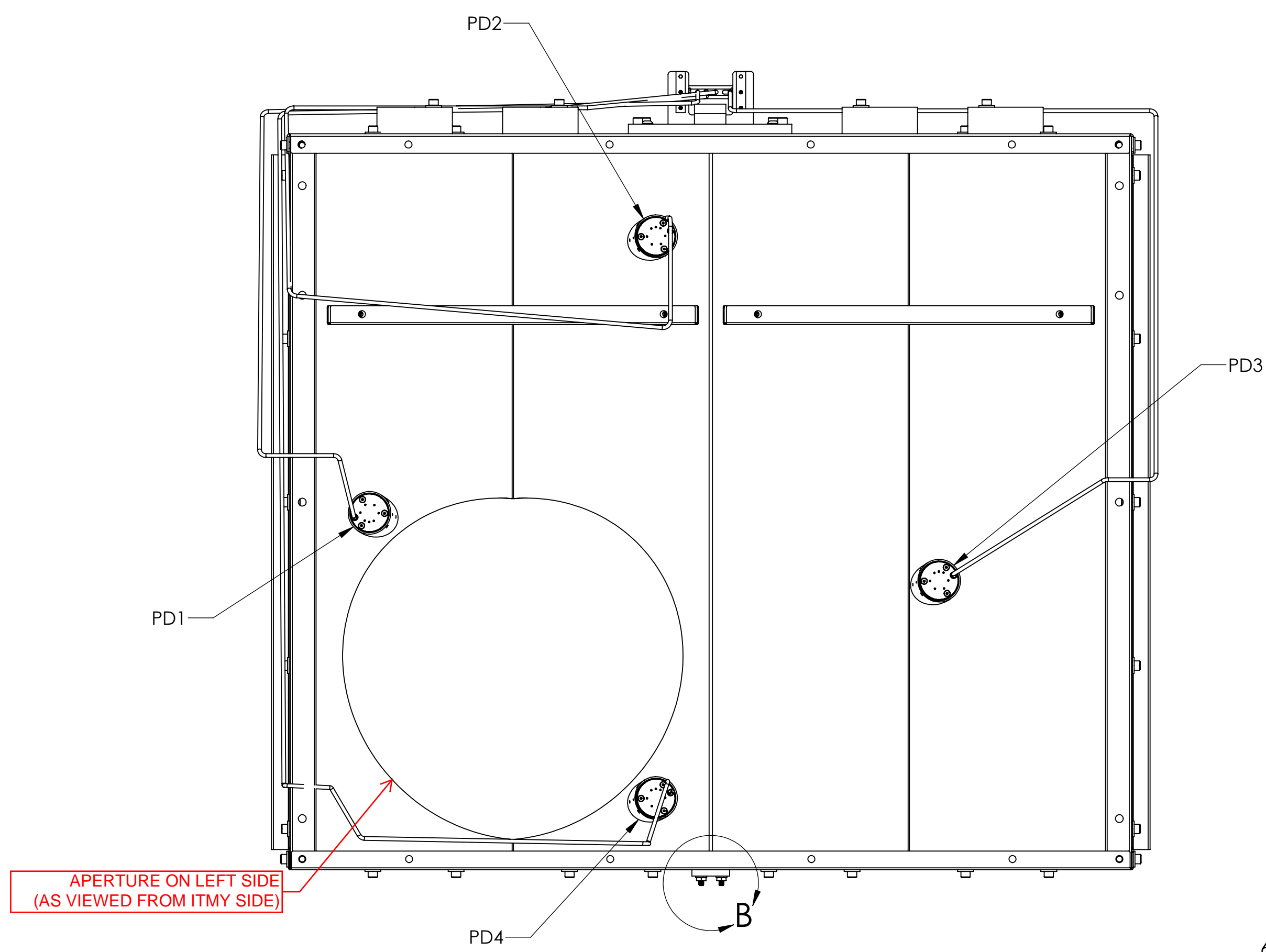
8 7 6 5 4 3 2 1

H
G
F
E
D
C
B
A

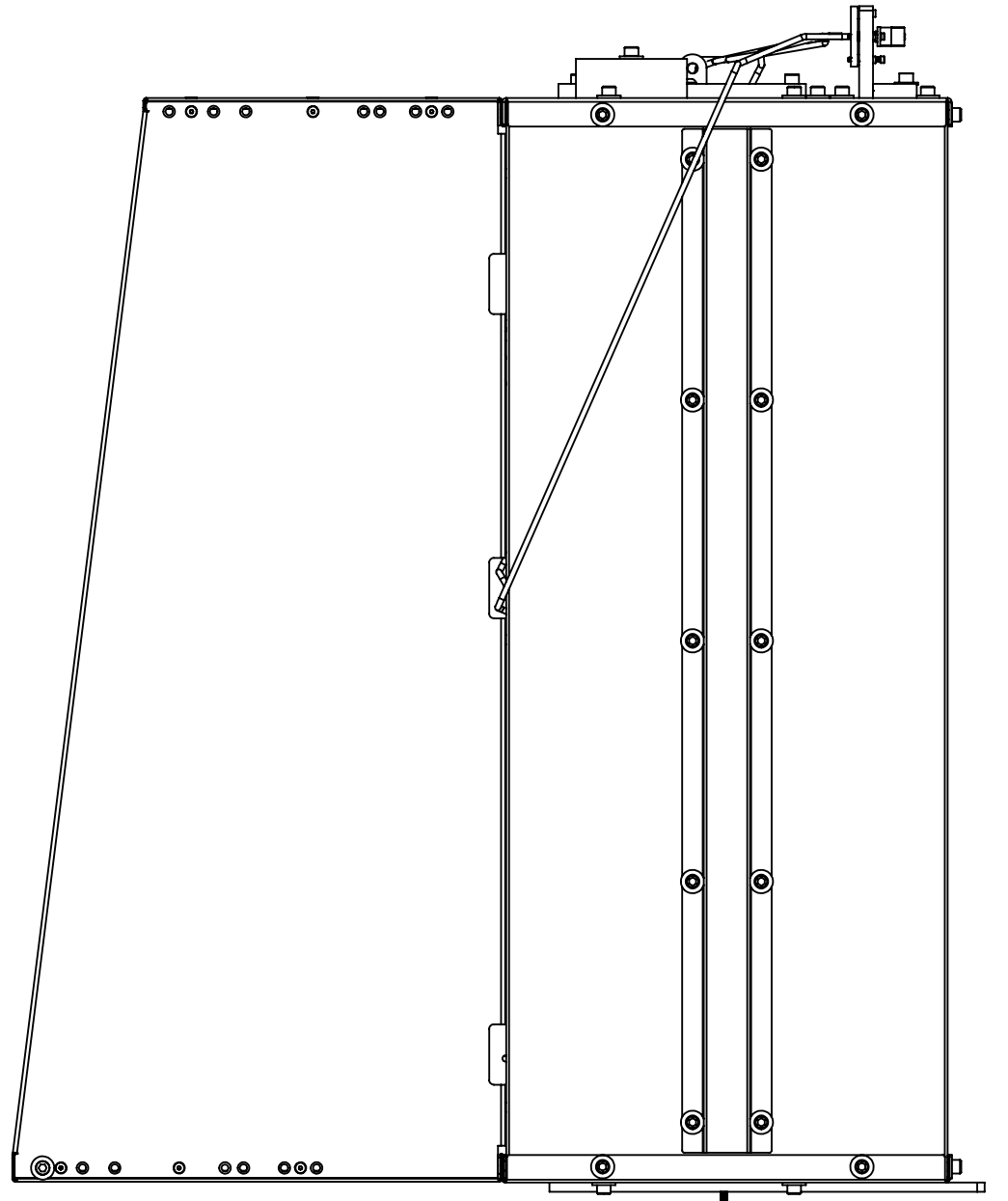
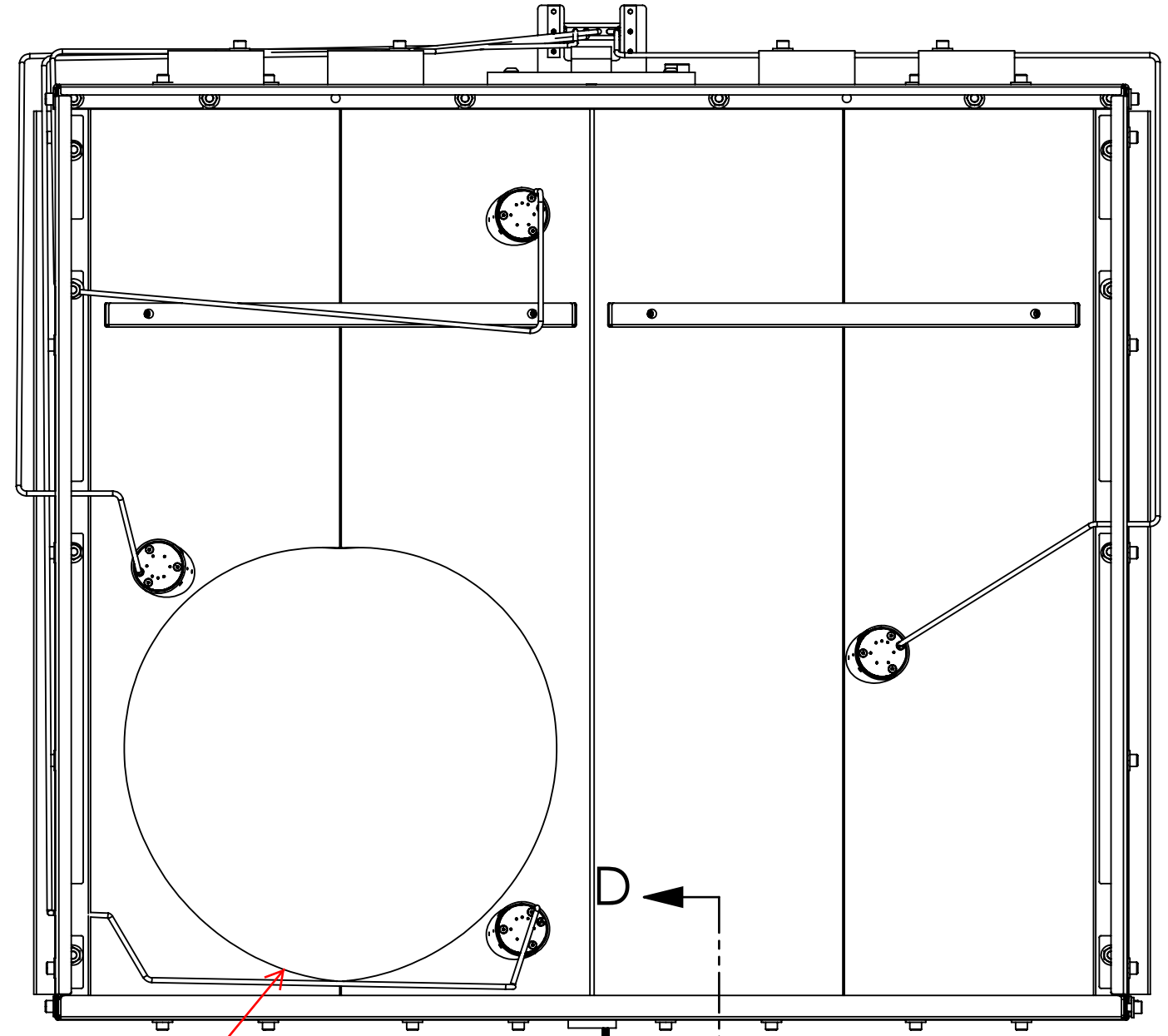
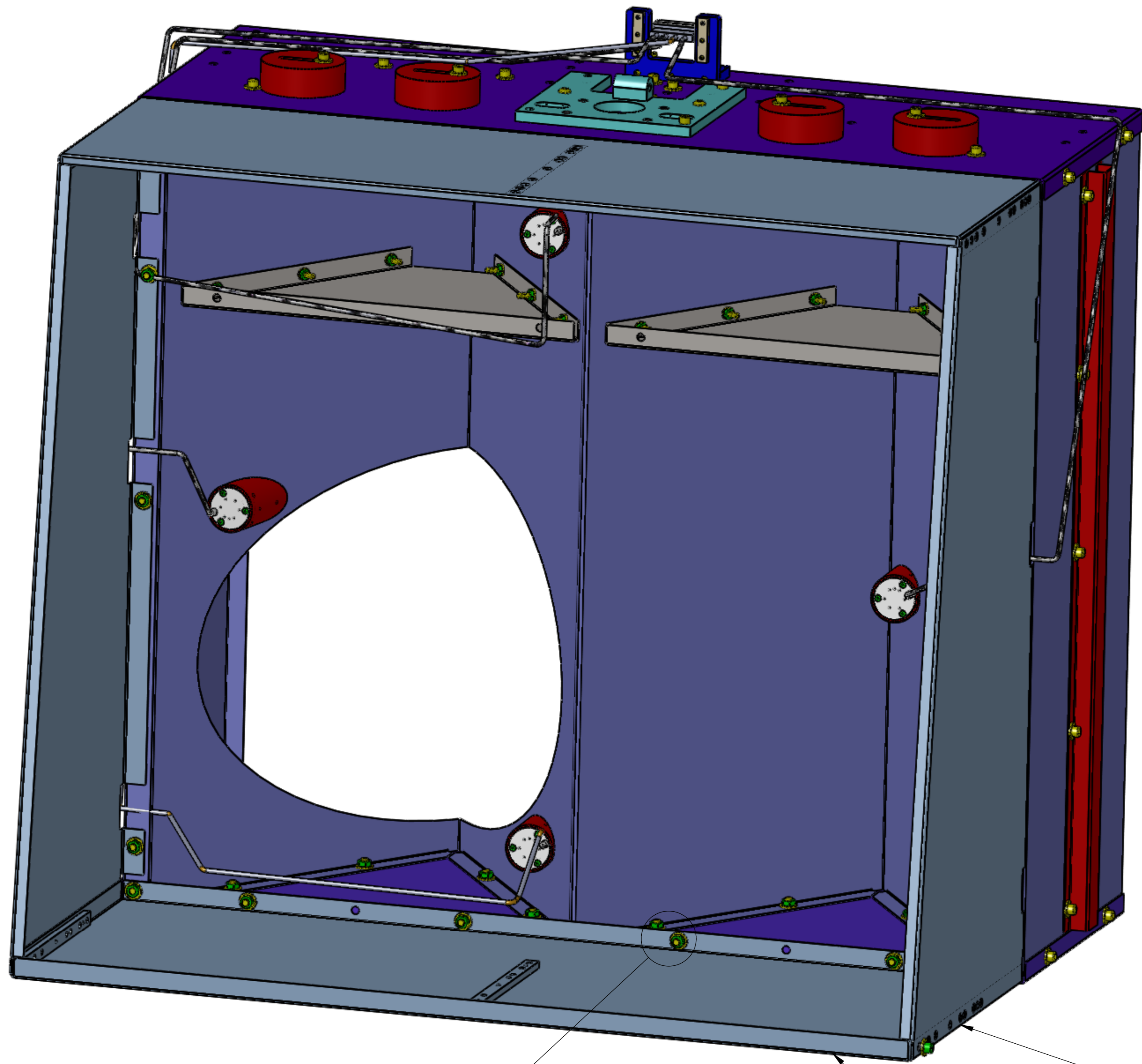
8 7 6 5 4 3 2 1



ASSEMBLY STEP 1

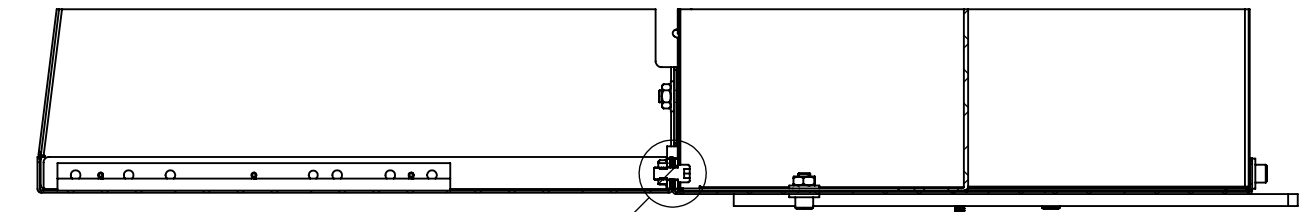


CALIFORNIA INSTITUTE OF TECHNOLOGY MASSACHUSETTS INSTITUTE OF TECHNOLOGY		REV.
SIZE DWG. NO.	D1200657	v4
SCALE: 1:3		
PROJECTION:	SHEET 2 OF 5	

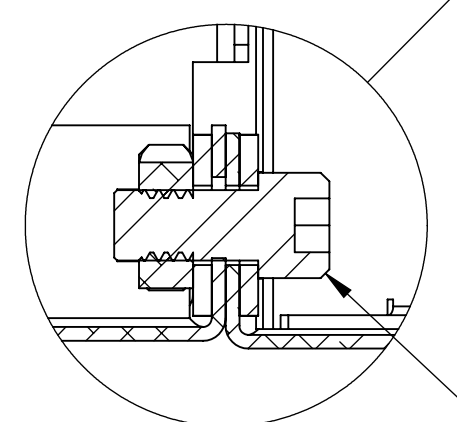


APERTURE ON LEFT SIDE
(AS VIEWED FROM ITMY SIDE)

D
D



SECTION D-D
SCALE 1 : 4



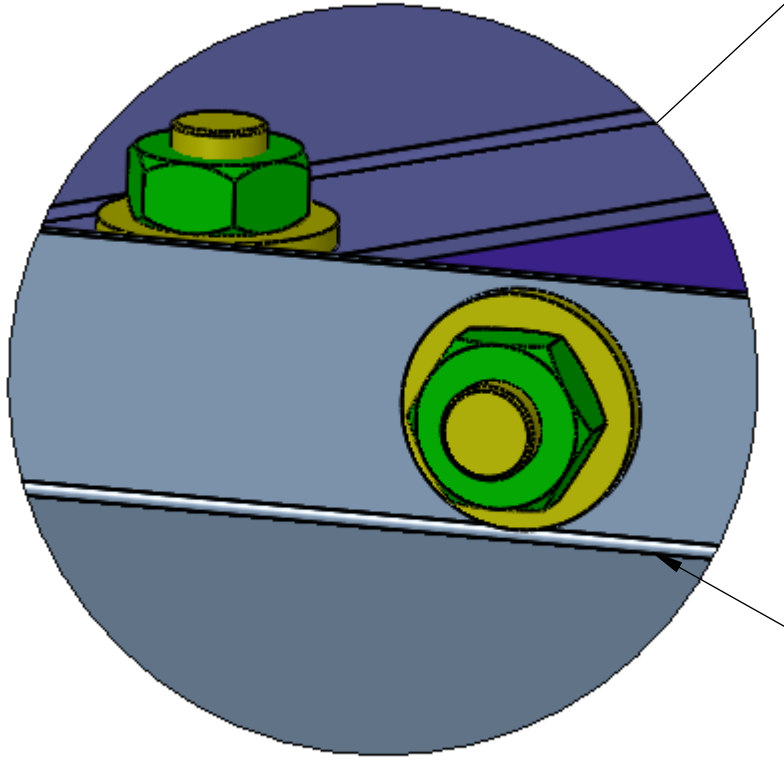
DETAIL E
SCALE 1.5 : 1

16
17
20 2X

20X

USE DRAWING D1 100391 FOR ASSEMBLY ITEM # 10
AND MOUNT TO BAFFLE BOX AS SHOWN

ASSEMBLY STEP 2



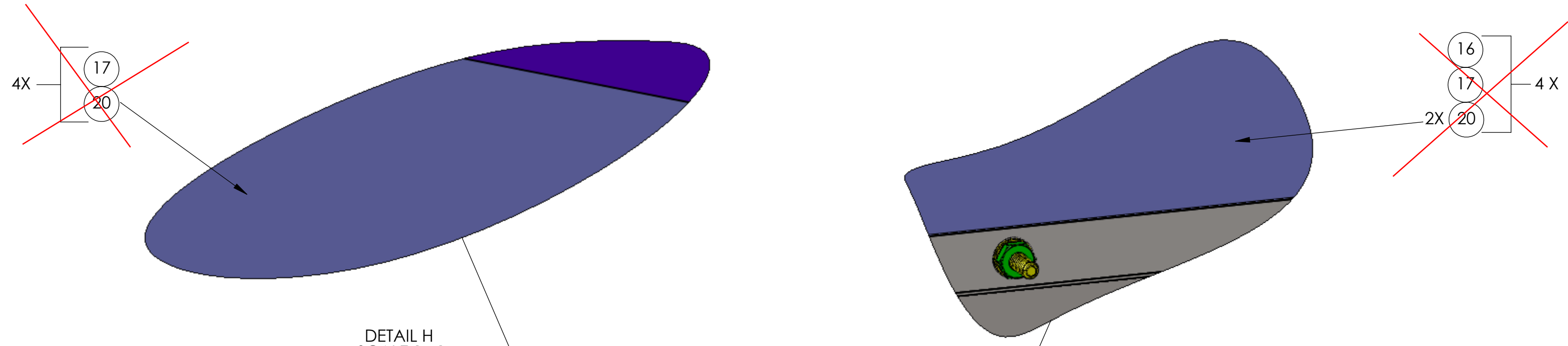
DETAIL F
SCALE 2 : 1

16
17
20 2X

16X

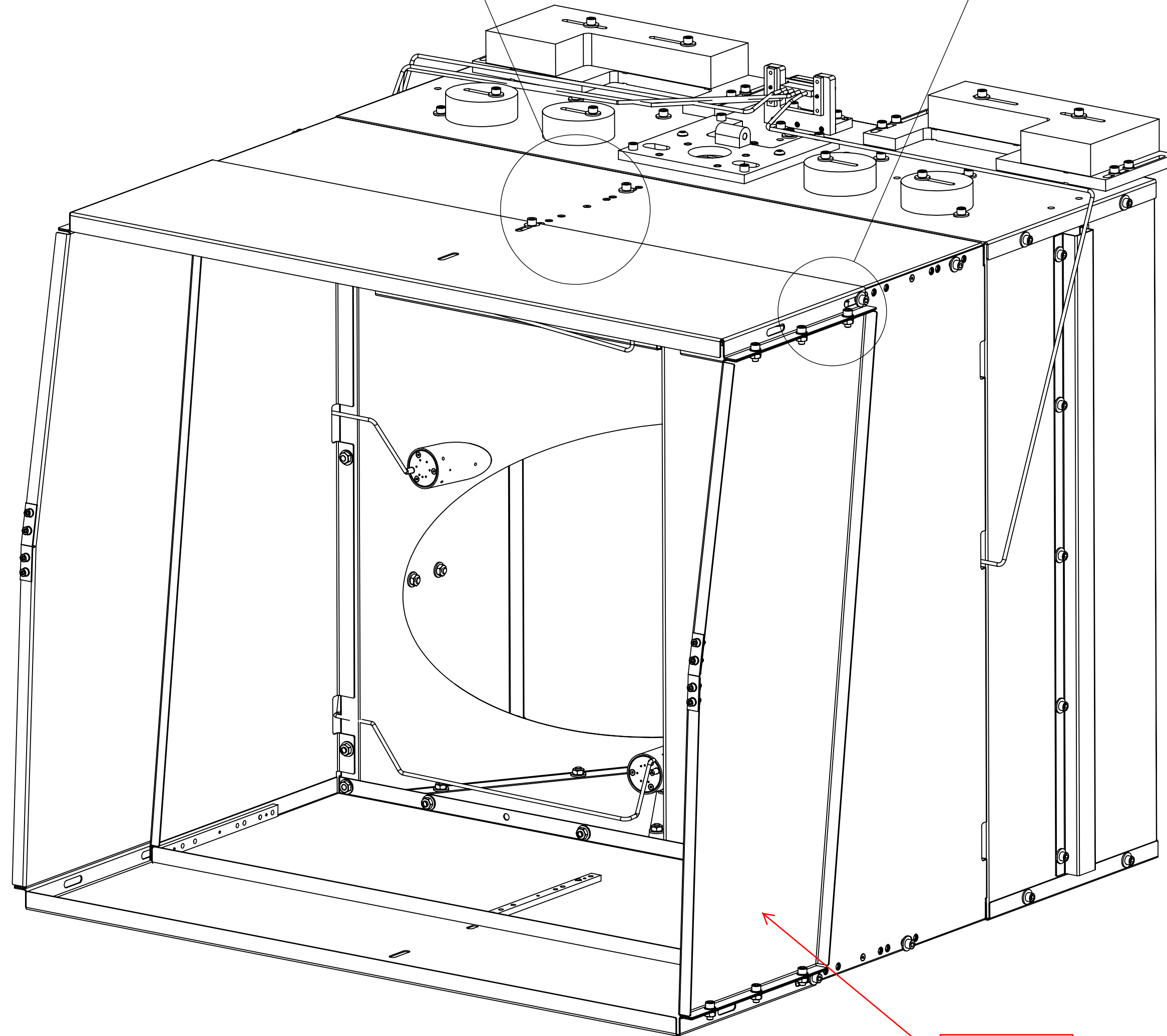
D1200657_AudiGO_ACS11 Hole Box Assy: BSC1-L1 & H1 (w/ PDJ) PART PDM REV: X-049; DRAWING PDM REV: X-015

USE DRAWING D1100359 TO DO ASSEMBLY AND MOUN IT TO BAFFLE BOX AS SHOWN.



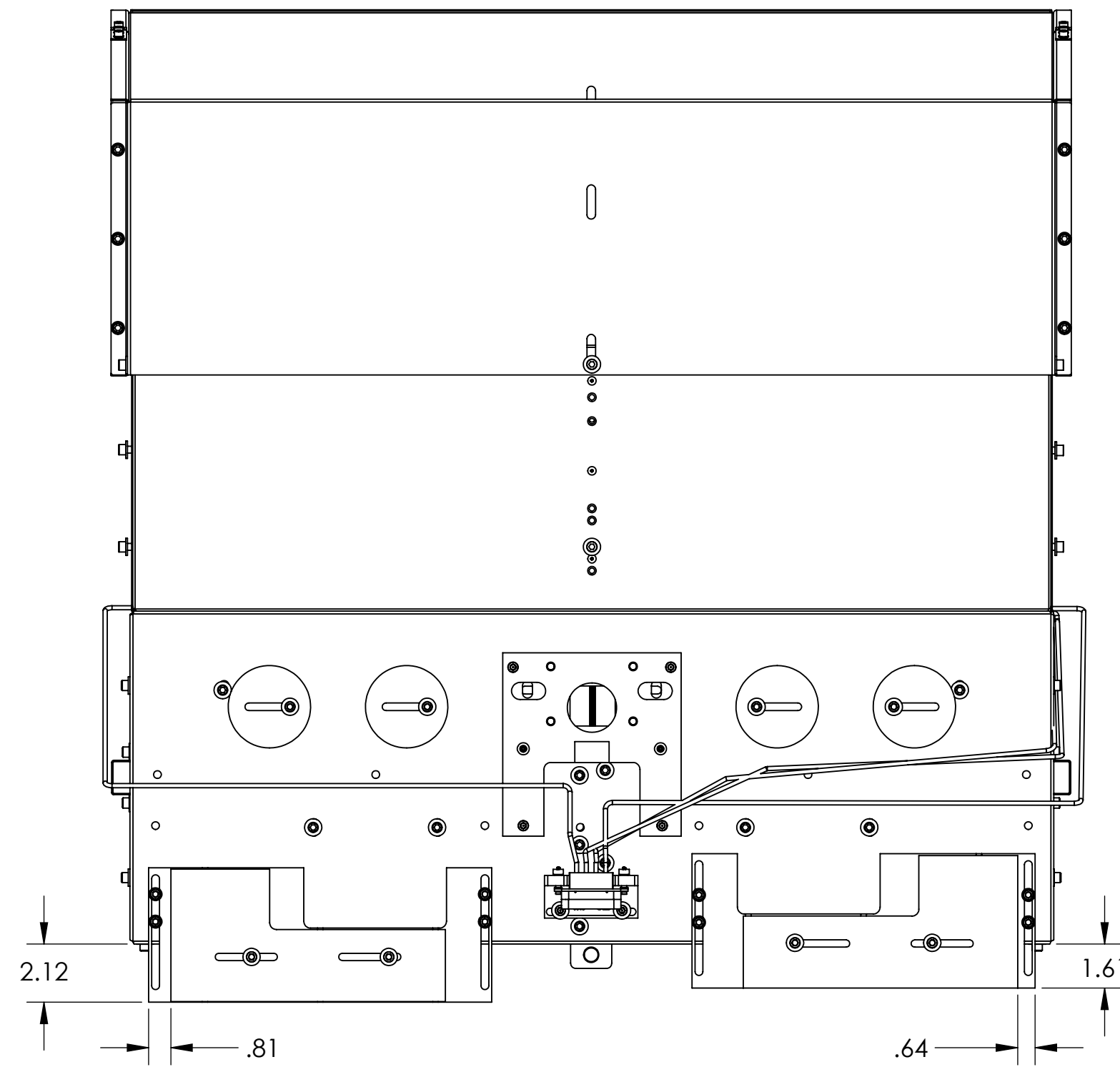
DETAIL H
SCALE 1 : 1

DETAIL G
SCALE 1 : 1

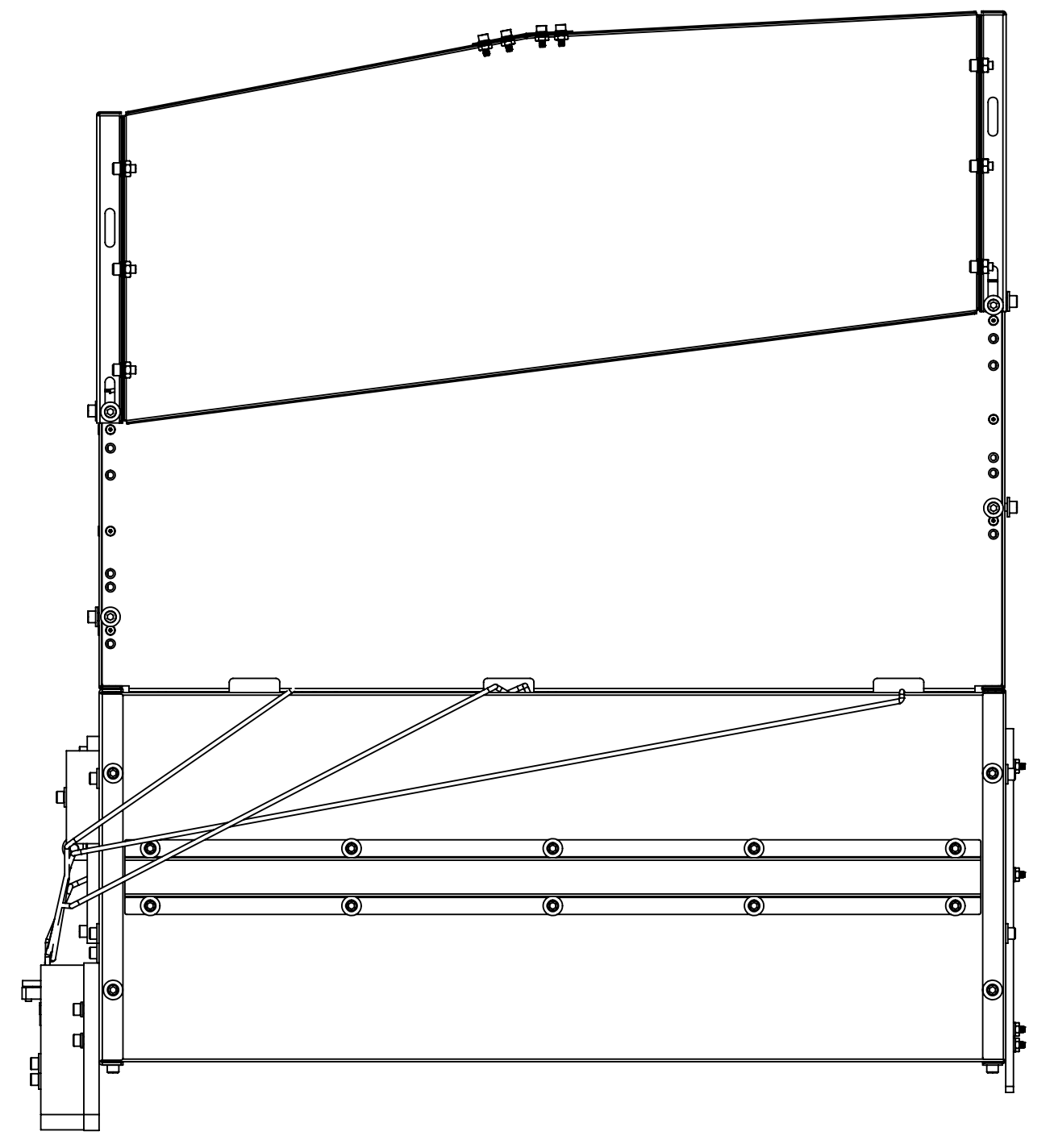


ASSEMBLY STEP 3

Attach Item 11
using Items 18
and 30, 6 places.



PRE-SET LENGTH FOR COUNTER WEIGHT OF LEFT AND
RIGHT SIDE BEFORE MOUNT TO SUSPENSION.



D1200657_AudiGO_ACS_3LC_ACB_1 Hole Box Assy. BSC1-L1 & H1 (w/PD) PART PDM REV-X-049; DRAWING PDM REV-X-015

8

7

6

5

4

3

2

1

H

G

F

E

D

C

B

A

H

G

F

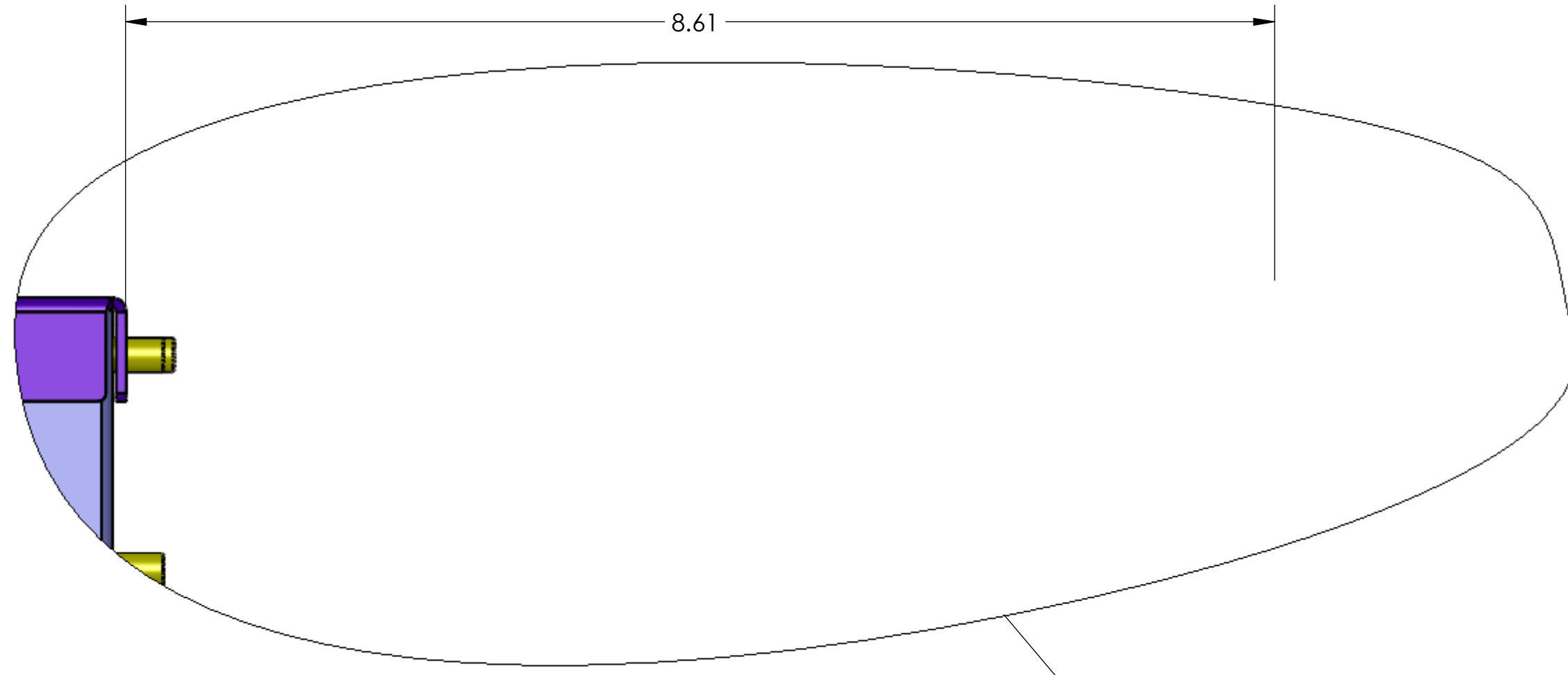
E

D

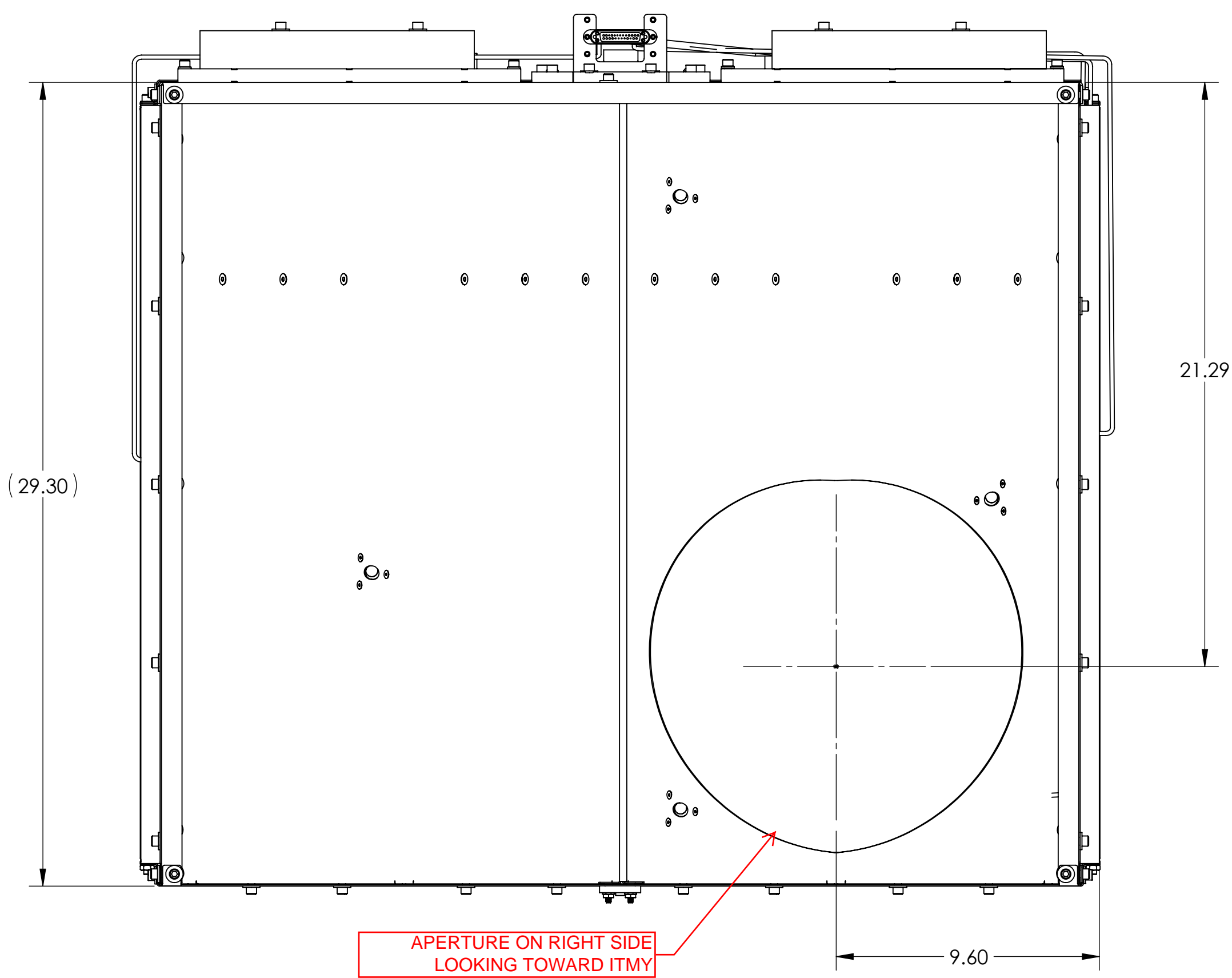
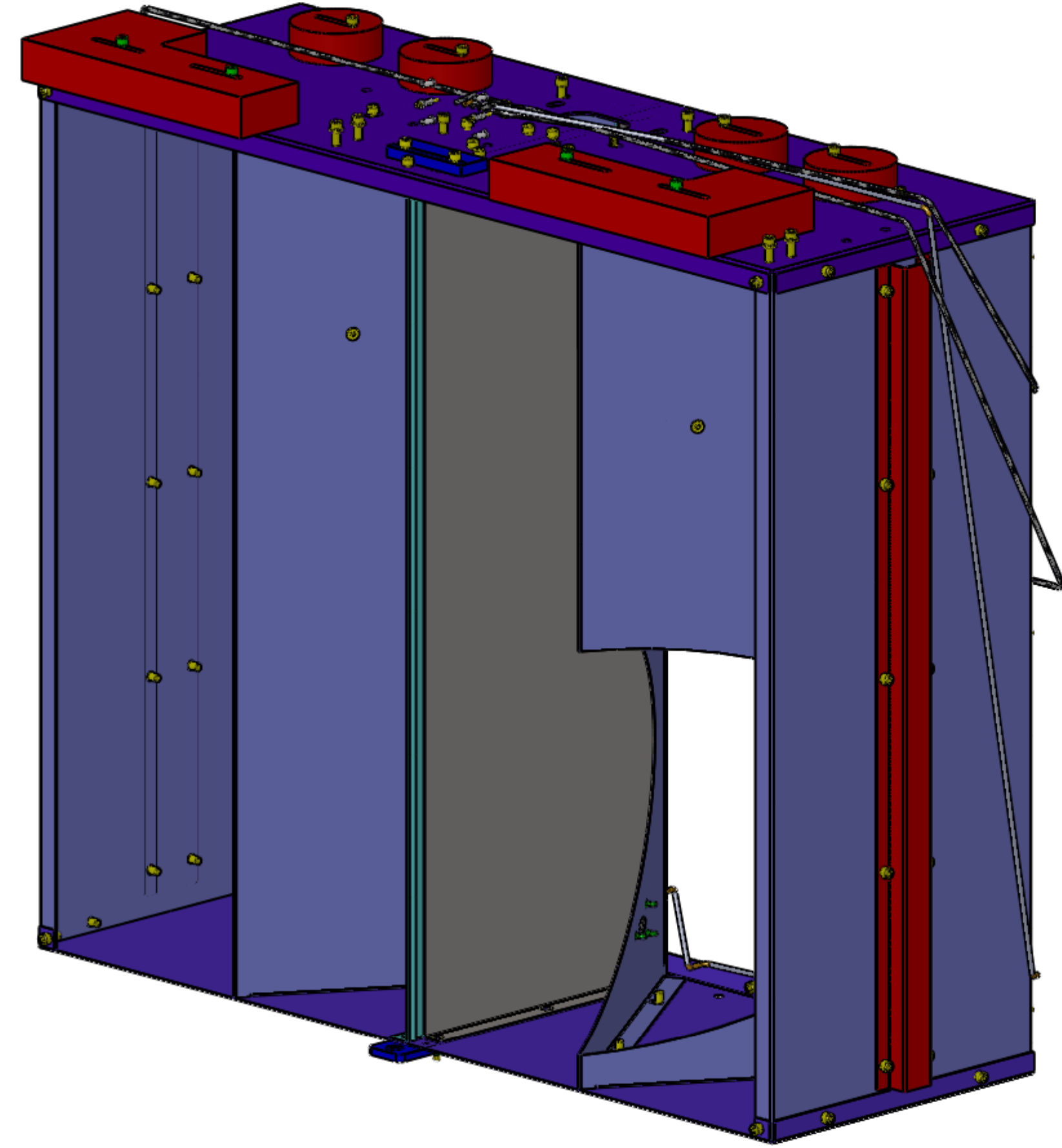
C

B

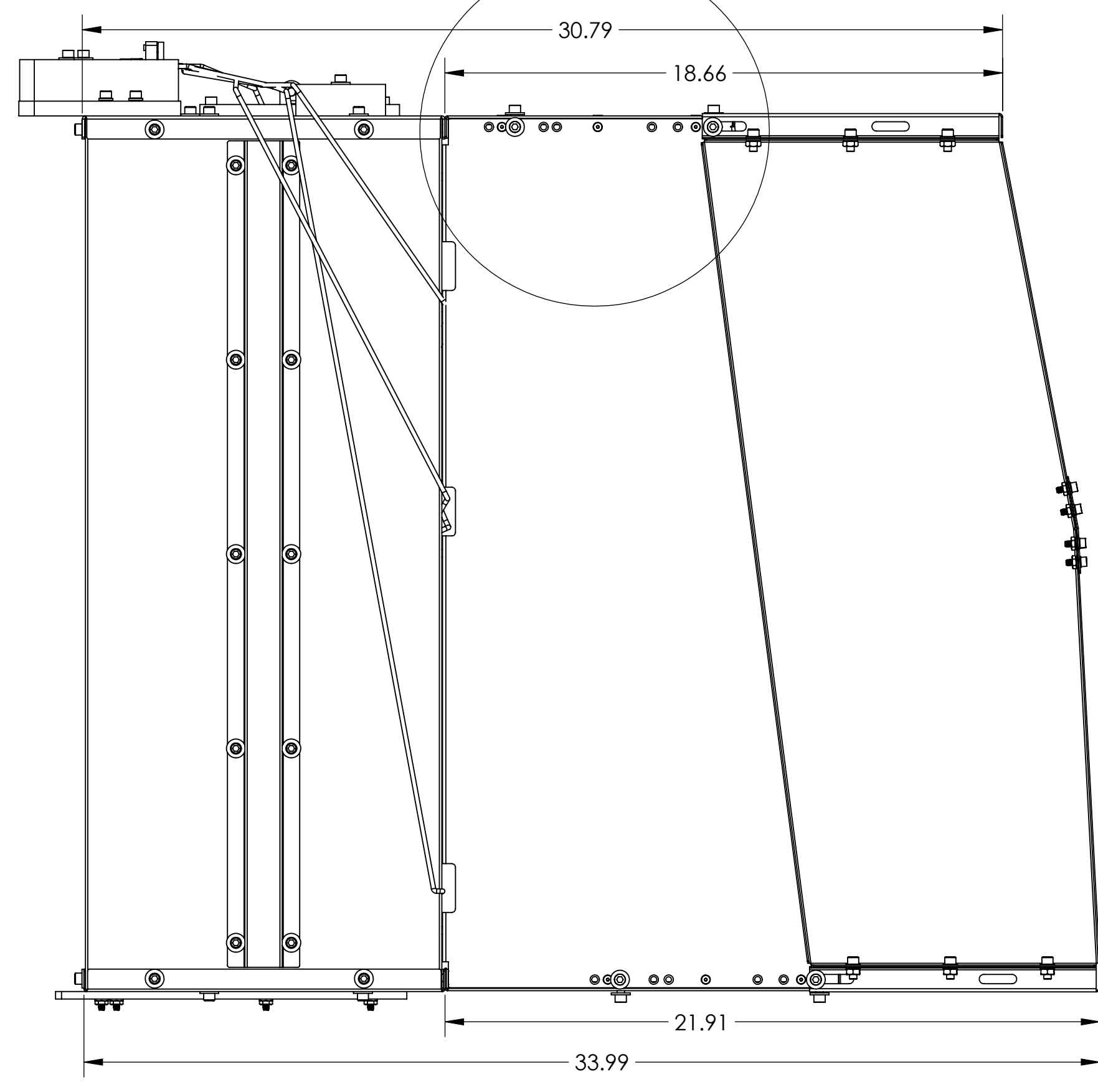
A



DETAIL L
SCALE 1 : 1



APERTURE ON RIGHT SIDE
LOOKING TOWARD ITMY



LIGO CALIFORNIA INSTITUTE OF TECHNOLOGY MASSACHUSETTS INSTITUTE OF TECHNOLOGY	
SIZE DWG. NO.	REV.
D D1200657	v4
SCALE: 1:3	PROJECTION: SHEET 5 OF 5

D:\200657_AduIGO_AQS_SLC_ACB_1\Infile_Box Assy: BSC1-L1 & H1 (w/PD) PART PDM REV: X-049; DRAWING PDM REV: X-015