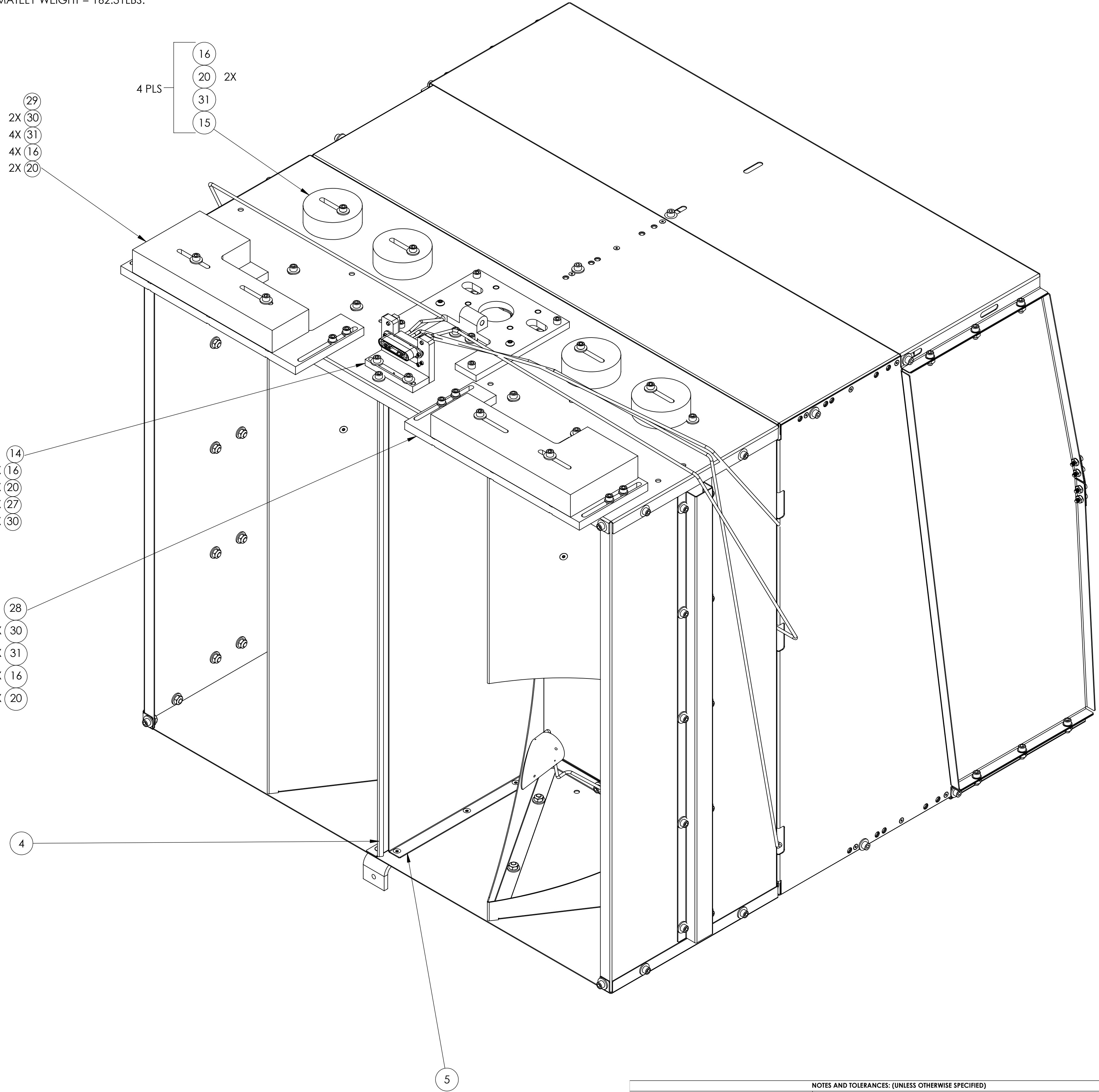


- NOTES CONTINUED:
- SCREWS MUST BE OXIDIZED BY MEANS OF AIR FURNACE
  - TORQUE SHCS TO VALUES SPECIFIED IN LIGO-T1100066.
  - APPROXIMATELY WEIGHT = 162.31LBS.

| REV. | DATE       | DCN #       | DRAWING TREE # |
|------|------------|-------------|----------------|
| v1   | 6 JUN 2012 | E1100335-v4 | -              |
| -    | -          | -           | -              |
| -    | -          | -           | -              |



| ITEM NO. | PART NUMBER | DESCRIPTION   | MATERIAL           | BSC1-H1/QTY |
|----------|-------------|---|--------------------|-------------|
| 32       | C-2014-N    | SOCKET HEAD CAP SCREW, SHC, 1/4-20 X 7/8"               | 18-8 SSSL          | 8           |
| 31       | C-2024-N    | SOCKET HEAD CAP SCREW, SHC, 1/4-20 x 1-1/2" L           | 18-8 SSSL          | 4           |
| 30       | WF-25       | WASHER, FLAT 1/4", .468" OD, .032" Thk                  | 300 SSSL           | 8           |
| 29       | D1200610    | COUNTERWEIGHT ASSY_LEFT SIDE                            | N/A                | 1           |
| 28       | D1200665    | COUNTERWEIGHT ASSY_RIGHT SIDE                           | N/A                | 1           |
| 27       | 92200A541   | SHCS, .25-20 x .88, 300 SSSL, MS16995-51                | 300 SSSL           | 2           |
| 26       | 92196A114   | SHCS 4-40 x 7/8" L                                      | 18-8 SSSL          | 2           |
| 25       | 98019A330   | WASHER #10, NASM 15795-808                              | 300 SSSL           | 18          |
| 24       | FA-606-NA   | FHSC, 6-32 X 3/8 LG, AG PLATED                          | Ag-PLATED 300 SSSL | 12          |
| 23       | BU-2012-N   | SCREW, BUTTON HD, SOC, .25-20 X 3/4" LG.                | 18-8 SSSL          | 2           |
| 22       | 94518A418   | FHSC, 10-24 X 3/4 LG, MS24671-22 (OR EQUIV.)            | 300 SSSL           | 18          |
| 21       | 92200A540   | SHCS, 1/4-20 X 3/4" LG, MS16995-50 (OR EQUIV)           | 18-8 SSSL          | 4           |
| 20       | 98019A355   | WASHER FLAT 1/4", .63" OD, .05"-.08" Thk, MIL-15795-810 | 300 SSSL           | 182         |
| 19       | N-1024-A    | HEX NUT, #10-24, AG PLATED,(OR EQUIVALENT)              | Ag-PLATED 300 SSSL | 18          |
| 18       | C-2008-NA   | SHCS, 1/4-20 x .50 AG PLATED                            | Ag-PLATED 300 SSSL | 12          |
| 17       | C-2008-N    | SCREW SHCS, 1/4-20 UNC-2A X 1/2" LG, FULL THREAD        | 300 SSSL           | 73          |
| 16       | N-2520-A    | U-C COMP. NUT, HEX .25-20 SILVER PLATED, 18-8 SSSL      | Ag-PLATED 300 SSSL | 93          |
| 15       | D1200835    | SLC ACB, TWO POUND WEIGHT                               | 304 SSSL           | 4           |
| 14       | D1001346    | αLIGO, ASSY, CABLE BRACKET, HAM TABLE                   | N/A                | 1           |
| 13       | D1003111    | SLC PHOTODETECTOR CABLE LOWER ASSY                      | N/A                | 2           |
| 12       | D1003013    | ARM CAVITY BAFFLE PD ASSY                               | N/A                | 4           |
| 11       | D1100359    | ACB ADJUSTABLE EXTENDER SHELF ASSY                      | N/A                | 1           |
| 10       | D1100391    | ACB SHELF ASSY  | N/A                | 1           |
| 9        | D1002173    | ARM CAVITY BAFFLE HINGE ASSY                            | N/A                | 1           |
| 8        | D1101427    | BRACE, LIFTING, ARM CAVITY BAFFLE                       | 6061-T6 Al         | 1           |
| 7        | D1001363    | ACB SIDE REINFORCING HATSECTION                         | 304 SSSL           | 2           |
| 6        | D1001365    | ARM BAFFLE MIDDLE REINFORCING PLATE                     | 18 GAUGE 304 SSSL  | 2           |
| 5        | D1101796    | ARM CAVITY BAFFLE CTR, MIRROR SKIN                      | 18 GAUGE, 304 SSSL | 1           |
| 4        | D1000976    | ARM CAVITY BAFFLE CTR SKIN                              | 18 GAUGE 304 SSSL  | 1           |
| 3        | D1000974    | ARM CAVITY BAFFLE TOP SKIN                              | 14 GAUGE 304 SSSL  | 1           |
| 2        | D1000975    | ARM CAVITY BAFFLE BTM SKIN                              | 18 GAUGE 304 SSSL  | 1           |
| 1        | D1200296    | ACB 1 HOLE RIGHT QPD SKIN (w pd)                        | 18 GAUGE, 304 SSSL | 1           |

NOTES AND TOLERANCES: (UNLESS OTHERWISE SPECIFIED)

DIMENSIONS ARE IN INCHES

TOLERANCES:  
 .XX ± .02  
 .XXX ± .010

ANGULAR ± 0.5°

|          |     |        |           |
|----------|-----|--------|-----------|
| MATERIAL | N/A | FINISH | N/A μinch |
|----------|-----|--------|-----------|

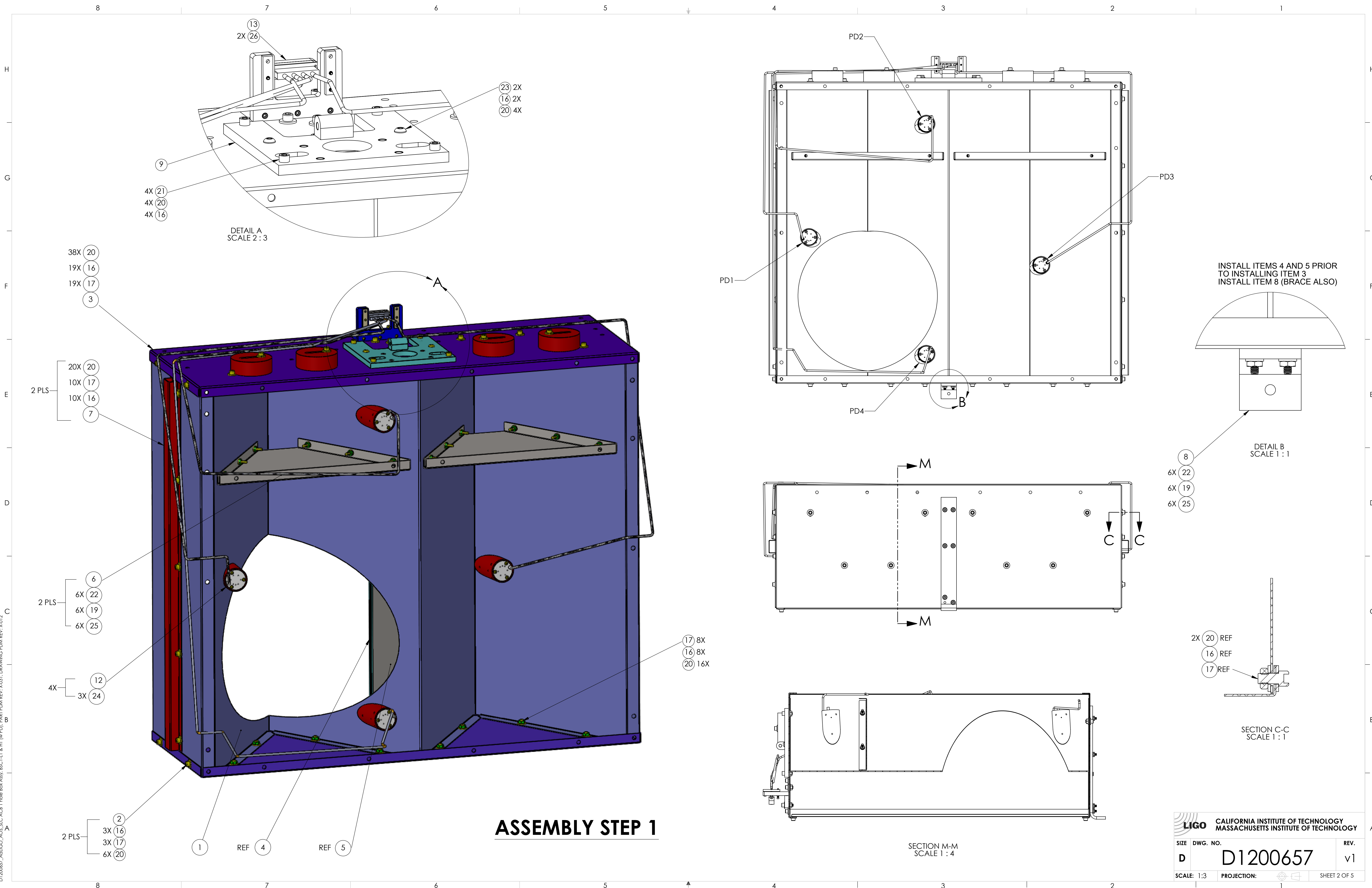
**LIGO** CALIFORNIA INSTITUTE OF TECHNOLOGY  
 MASSACHUSETTS INSTITUTE OF TECHNOLOGY

SYSTEM: ADVANCED LIGO SUB-SYSTEM: AOS NEXT ASSY: D0901376

PART NAME: ACB, 1 HOLE BOX ASSY, BSC1-L1 & H1

|          |            |             |       |     |            |          |              |    |
|----------|------------|-------------|-------|-----|------------|----------|--------------|----|
| DESIGNER | N.Nguyen   | 01 Jun 2010 | SIZE  | D   | DWG. NO.   | D1200657 | REV.         | v1 |
| DRAFTER  | TG. NGUYEN | 6 JUN 2012  | SCALE | 1:3 | PROJECTION |          | SHEET 1 OF 5 |    |
| CHECKER  | L. AUSTIN  |             |       |     |            |          |              |    |
| APPROVAL | M. SMITH   |             |       |     |            |          |              |    |

D1200657\_AdrLIGO\_ACS\_SLC\_ACB\_1 Hole Box Assy, BSC1-L1 & H1 (w PD) PART PDM REV: X-031 DRAWING PDM REV: X-017



D1200657\_Audio\_ACS\_1 Inile Box Assy. BSCI-L1 & H1 (w/ PD) PART PDM REV: X-031 DRAWING PDM REV: X-017

|   |                 |              |
|---|-----------------|--------------|
| <b>CALIFORNIA INSTITUTE OF TECHNOLOGY</b><br><b>MASSACHUSETTS INSTITUTE OF TECHNOLOGY</b> |                 | REV.         |
| SIZE DWG. NO.   | <b>D1200657</b> | v1           |
| SCALE: 1:3  | PROJECTION:     | SHEET 2 OF 5 |

8

7

6

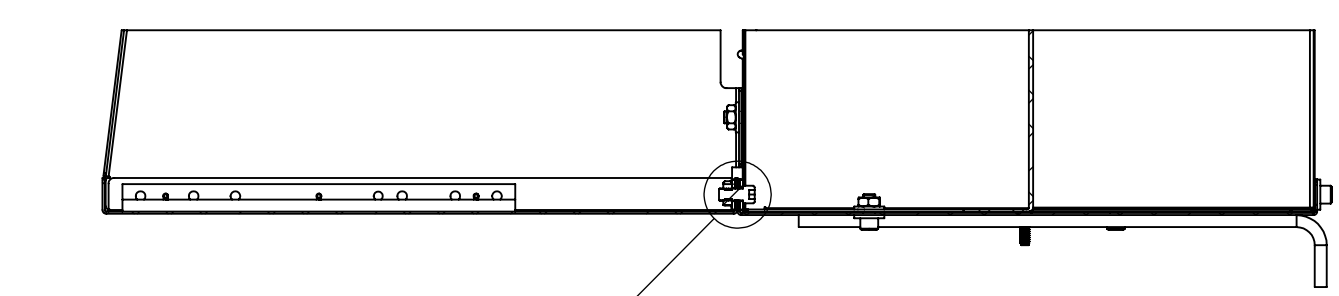
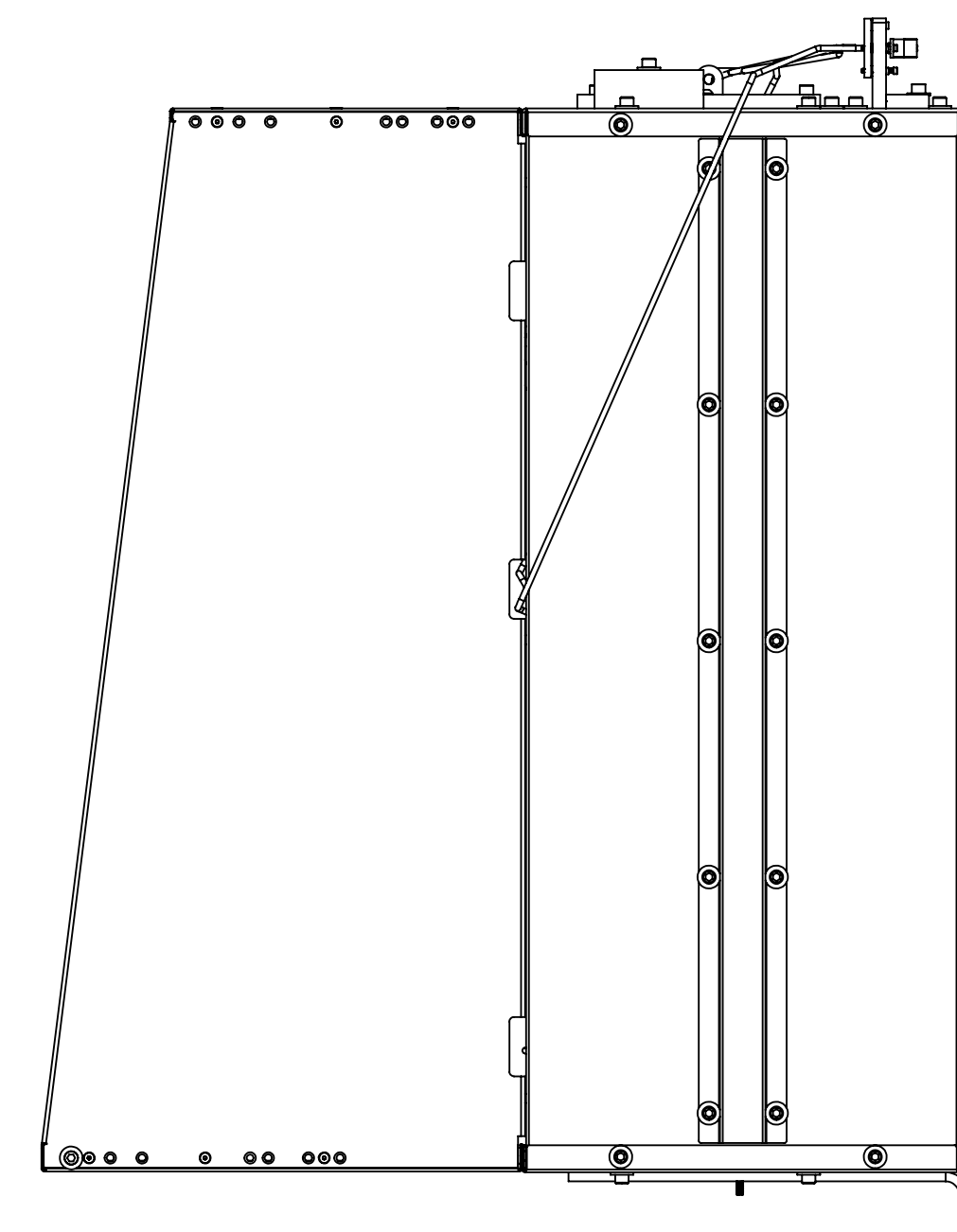
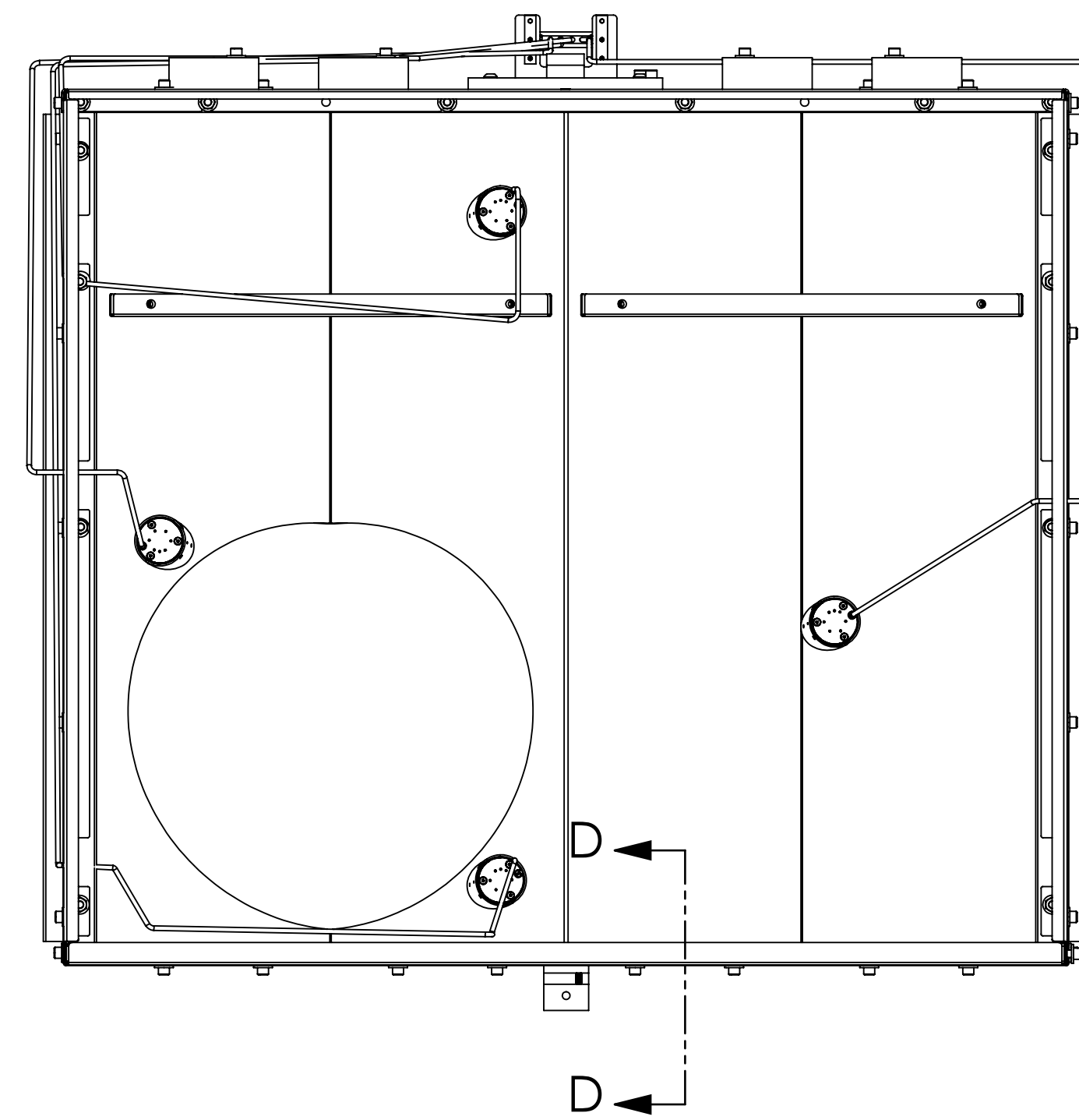
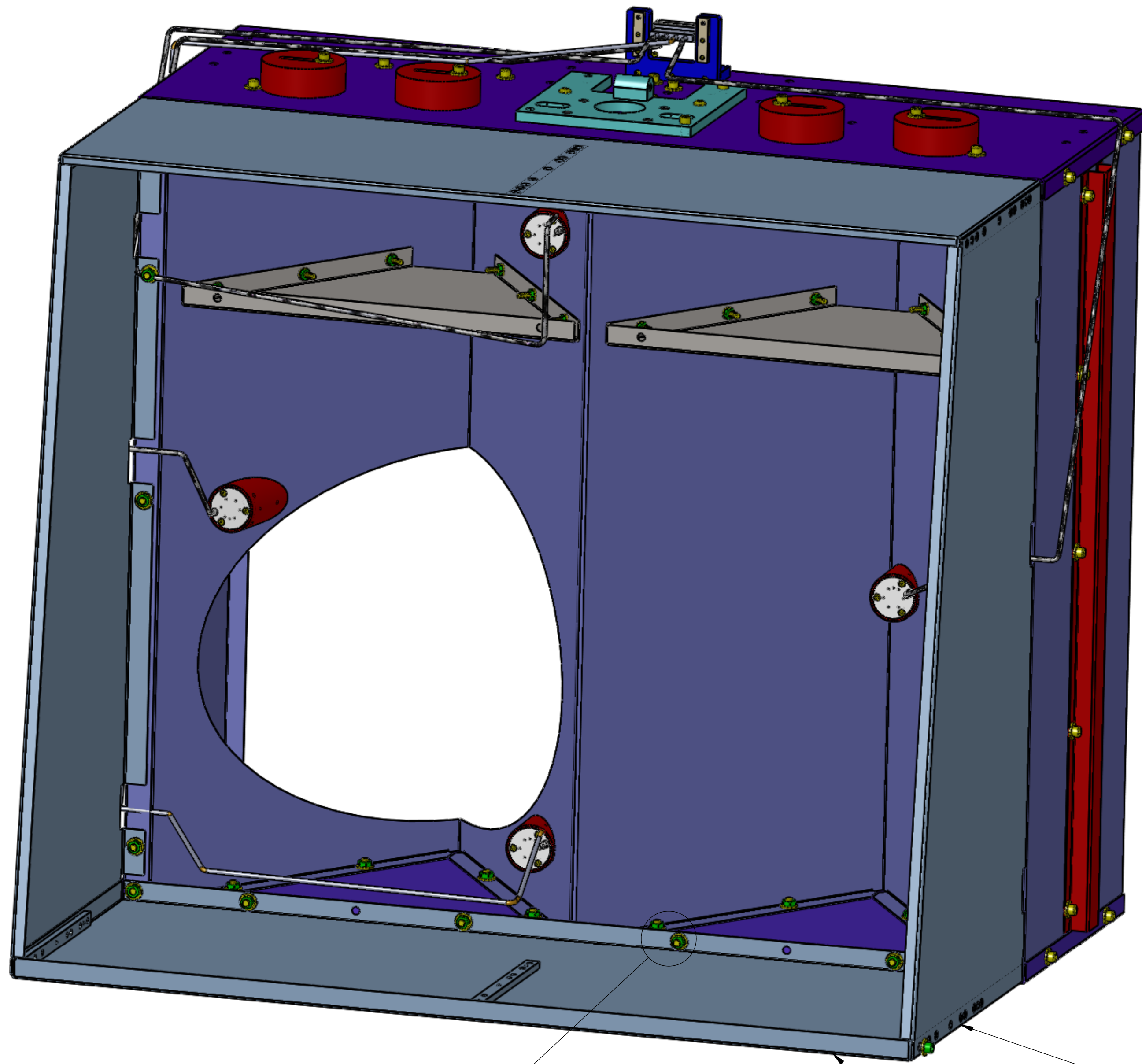
5

4

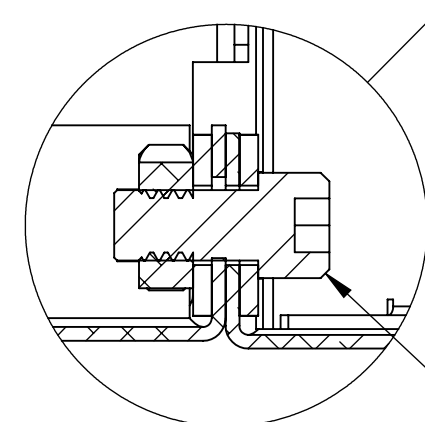
3

2

1

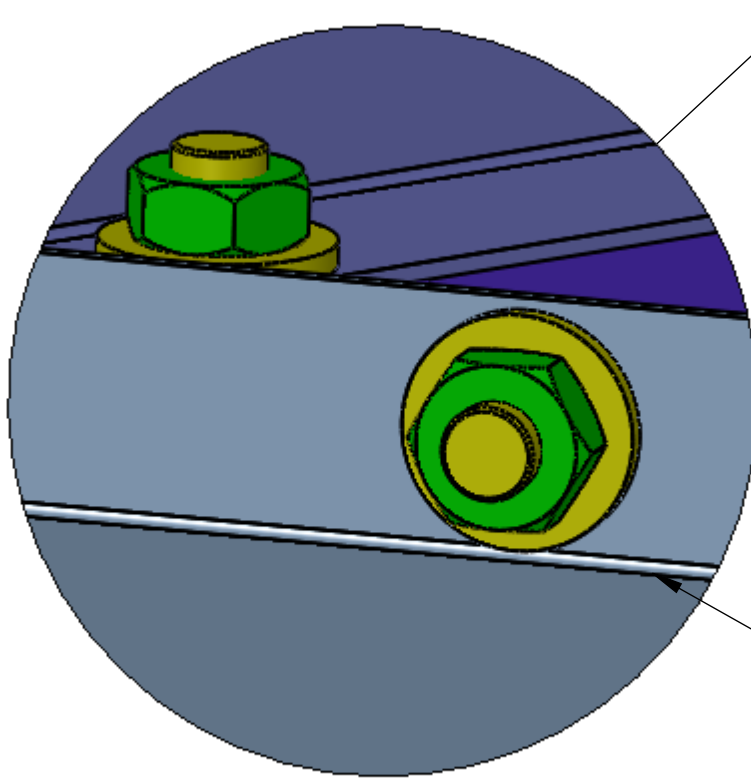


SECTION D-D  
SCALE 1 : 4



DETAIL E  
SCALE 1.5 : 1

- 16
  - 17
  - 20 2X
- 20 PLS



DETAIL F  
SCALE 2 : 1

- 16
  - 17
  - 20 2X
- 16 PLS

USE DRAWING D1 100391 FOR ASSEMBLY ITEM # 10  
AND MOUNT TO BAFFLE BOX AS SHOWN

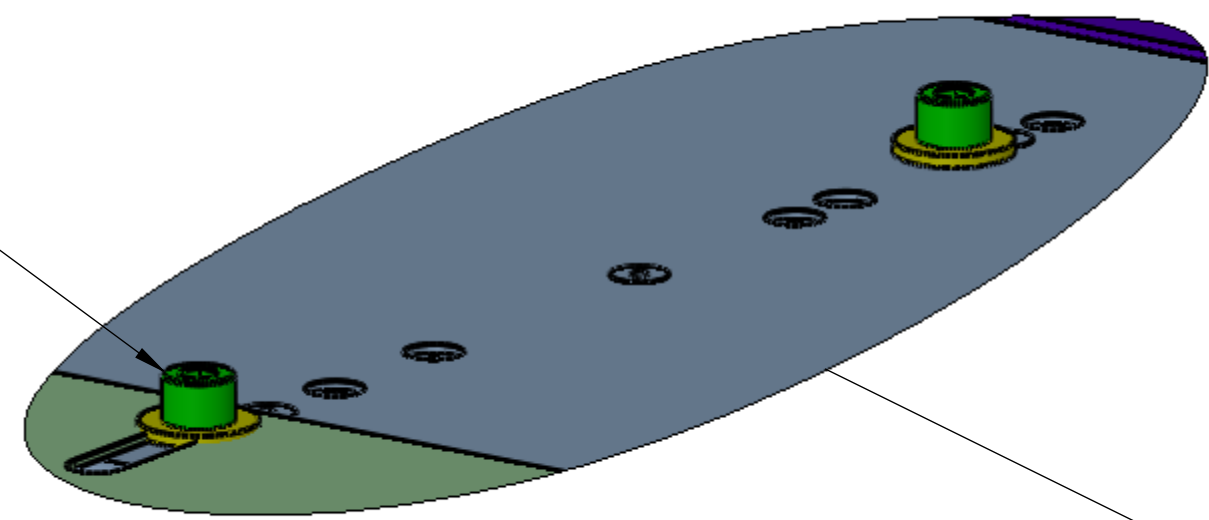
### ASSEMBLY STEP 2

|   |             |              |
|---|-------------|--------------|
| <b>LIGO</b> CALIFORNIA INSTITUTE OF TECHNOLOGY<br>MASSACHUSETTS INSTITUTE OF TECHNOLOGY |             | REV.         |
| SIZE DWG. NO.   | D1200657    | v1           |
| SCALE: 1:3  | PROJECTION: | SHEET 3 OF 5 |

D1200657\_AudiGO\_ACS\_SLC\_ACB\_1 Hole Box Assy\_BSC1-L1 & H1 (w/PD) PART PDM REV: X031 DRAWING PDM REV: X012

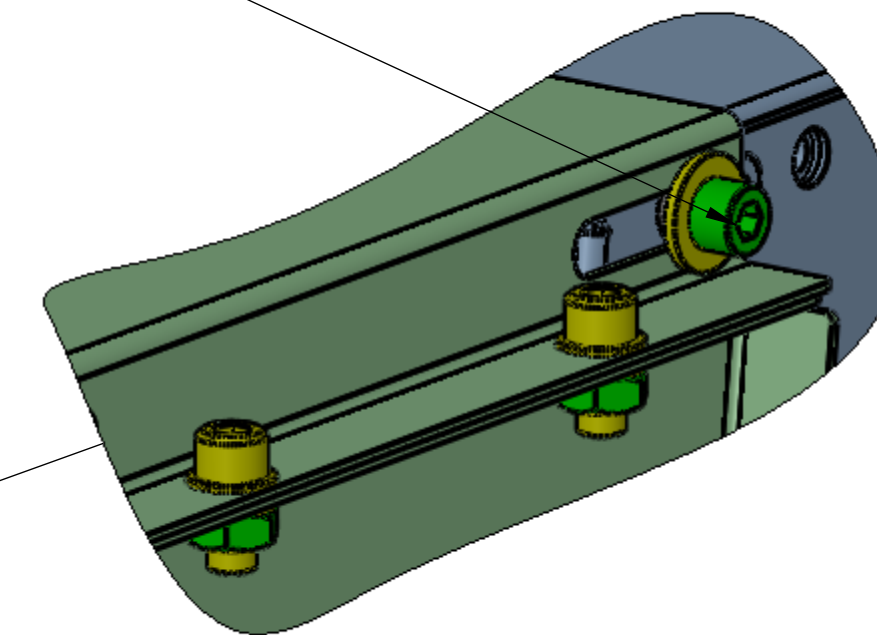
USE DRAWING D1100359 TO DO ASSEMBLY AND MOUN IT TO BAFFLE BOX AS SHOWN.

4 PLS  
17  
20

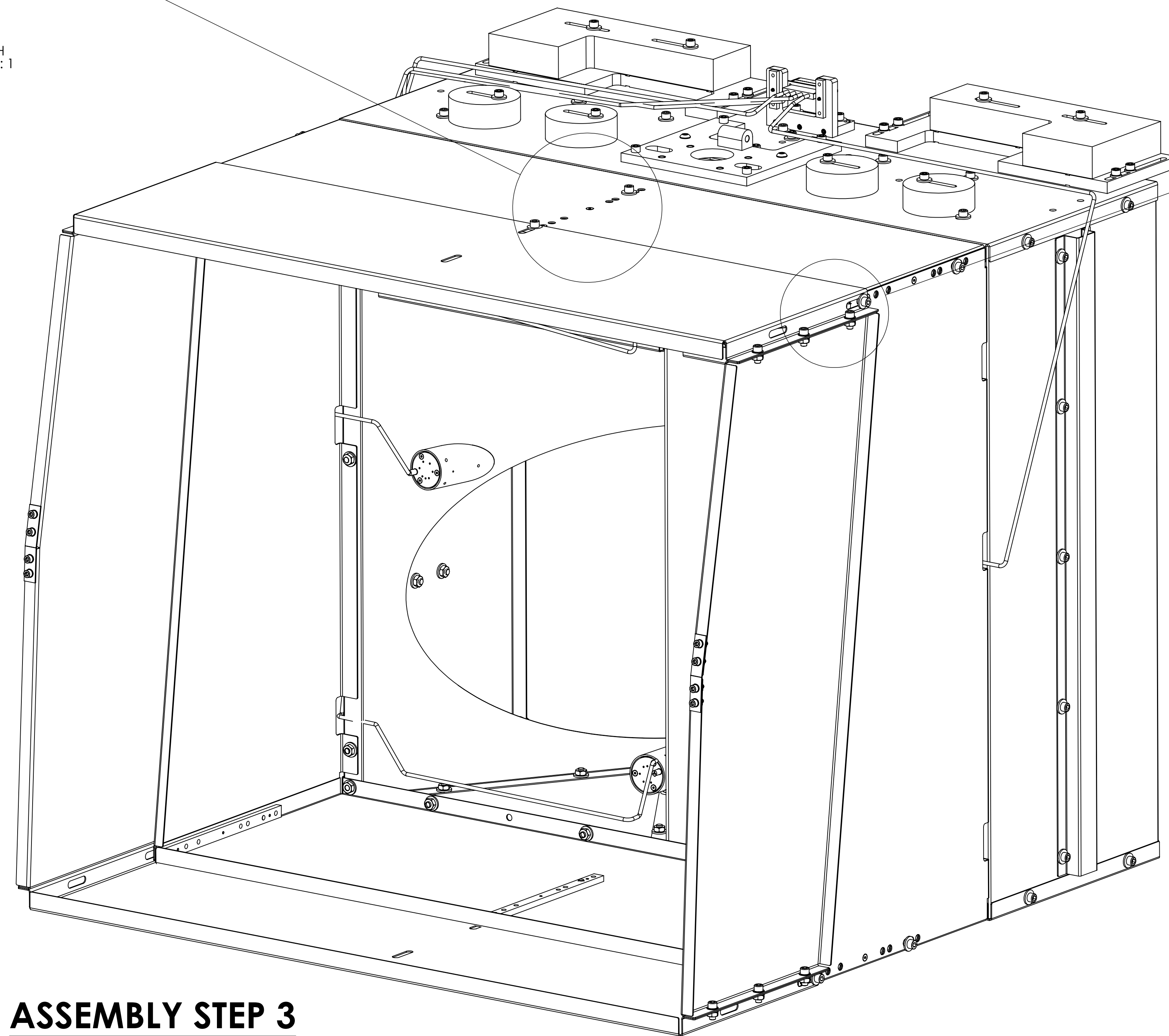


DETAIL H  
SCALE 1 : 1

4 PLS  
16  
17  
2X 20



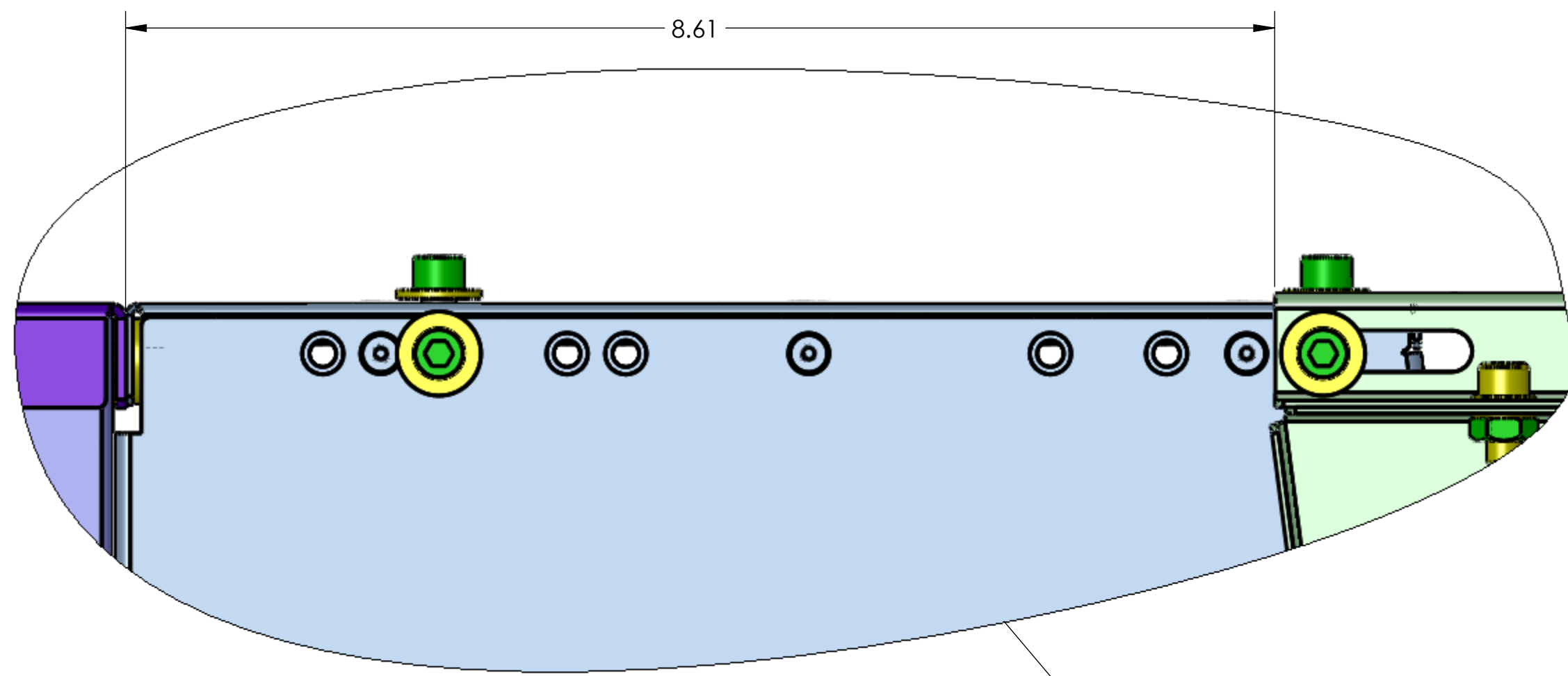
DETAIL G  
SCALE 1 : 1



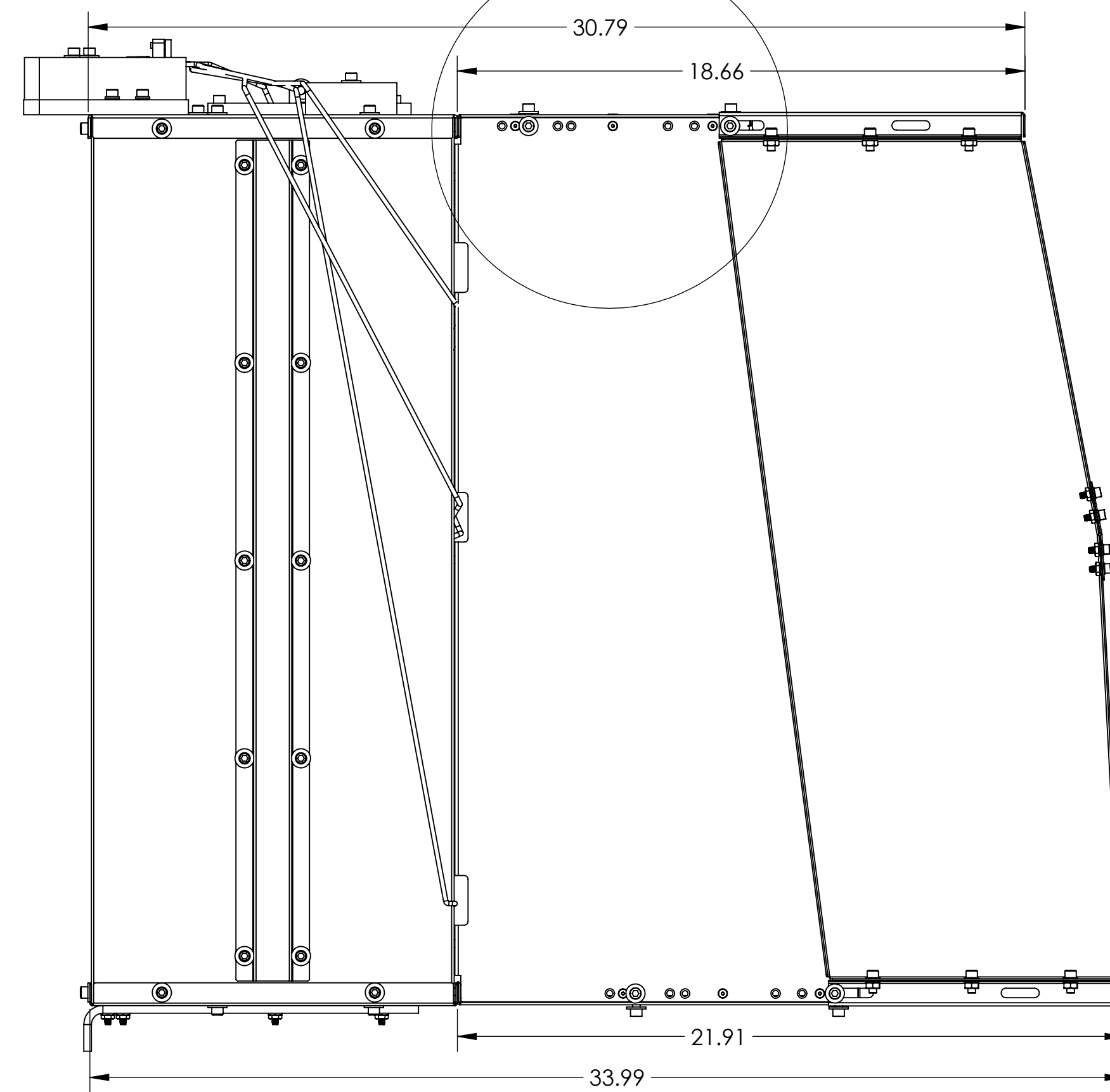
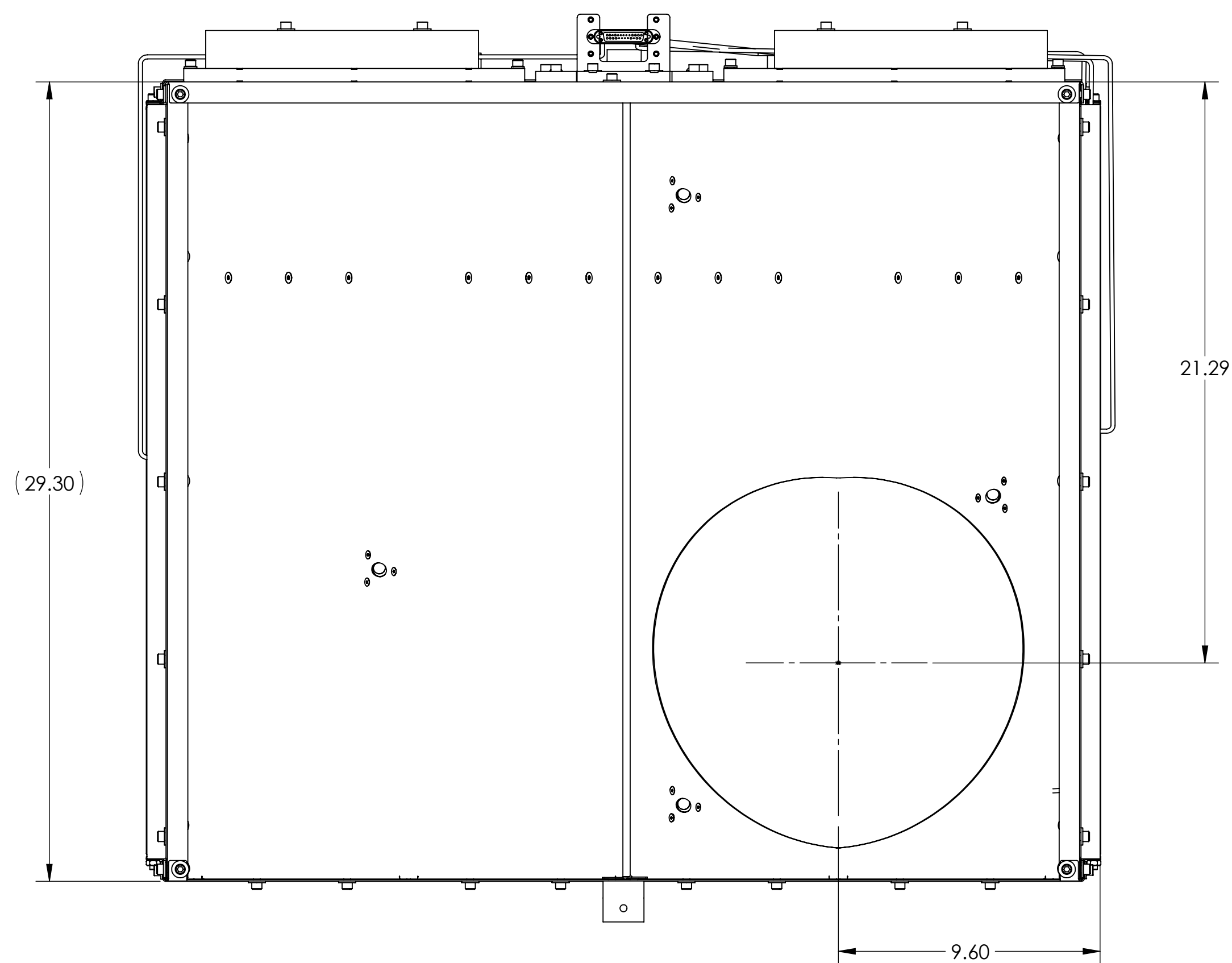
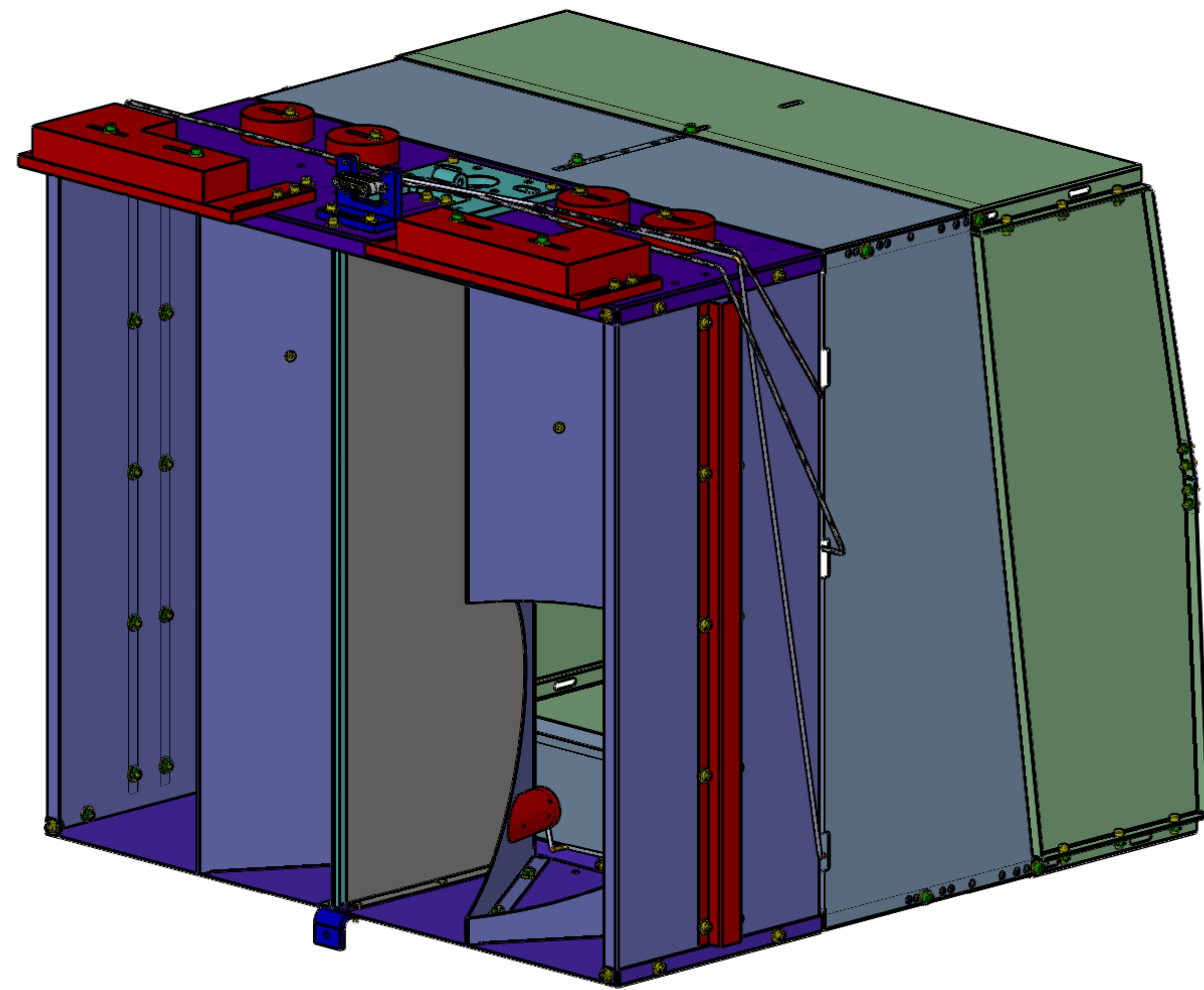
### ASSEMBLY STEP 3

|   |             |
|---|-------------|
| <b>LIGO</b> CALIFORNIA INSTITUTE OF TECHNOLOGY<br>MASSACHUSETTS INSTITUTE OF TECHNOLOGY |             |
| SIZE DWG. NO.   | REV.        |
| D D1200657  | v1          |
| SCALE: 1:3  | PROJECTION: |
| SHEET 4 OF 5  |             |

D:\200657\_AduIGO\_ACS\_SLC\_ACB\_1\_Hole\_Box\_Assy\_BSC1-L1 & H1 (w-PD) PART PDM REV-X-031 DRAWING PDM REV-X-017



DETAIL L  
SCALE 1 : 1



D1200657\_AudiGO\_ACS\_SLC\_ACB\_1 Hole Box Assy: BSC1-L1 & H1 (w/PD) PART PDM REV: X031 DRAWING PDM REV: X012