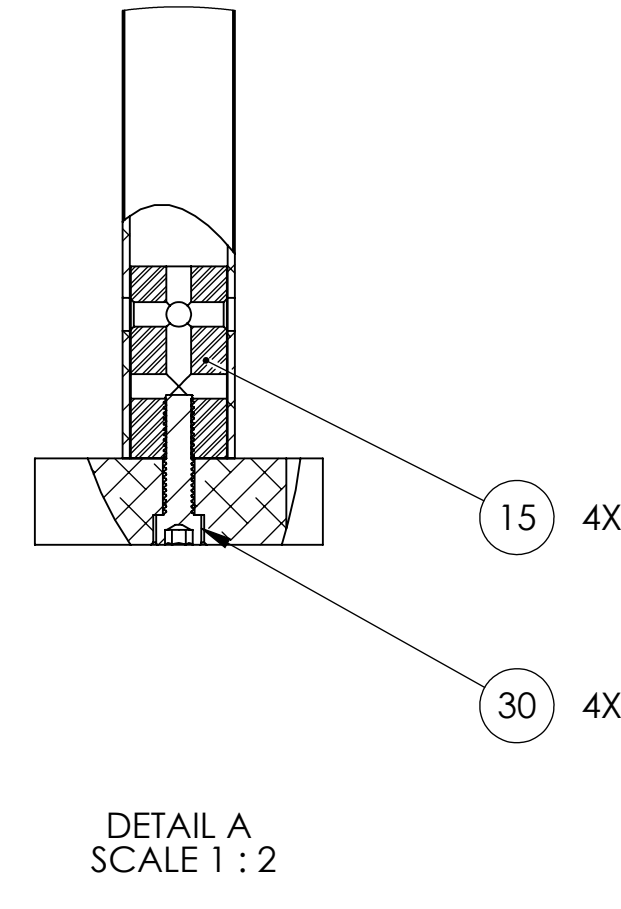
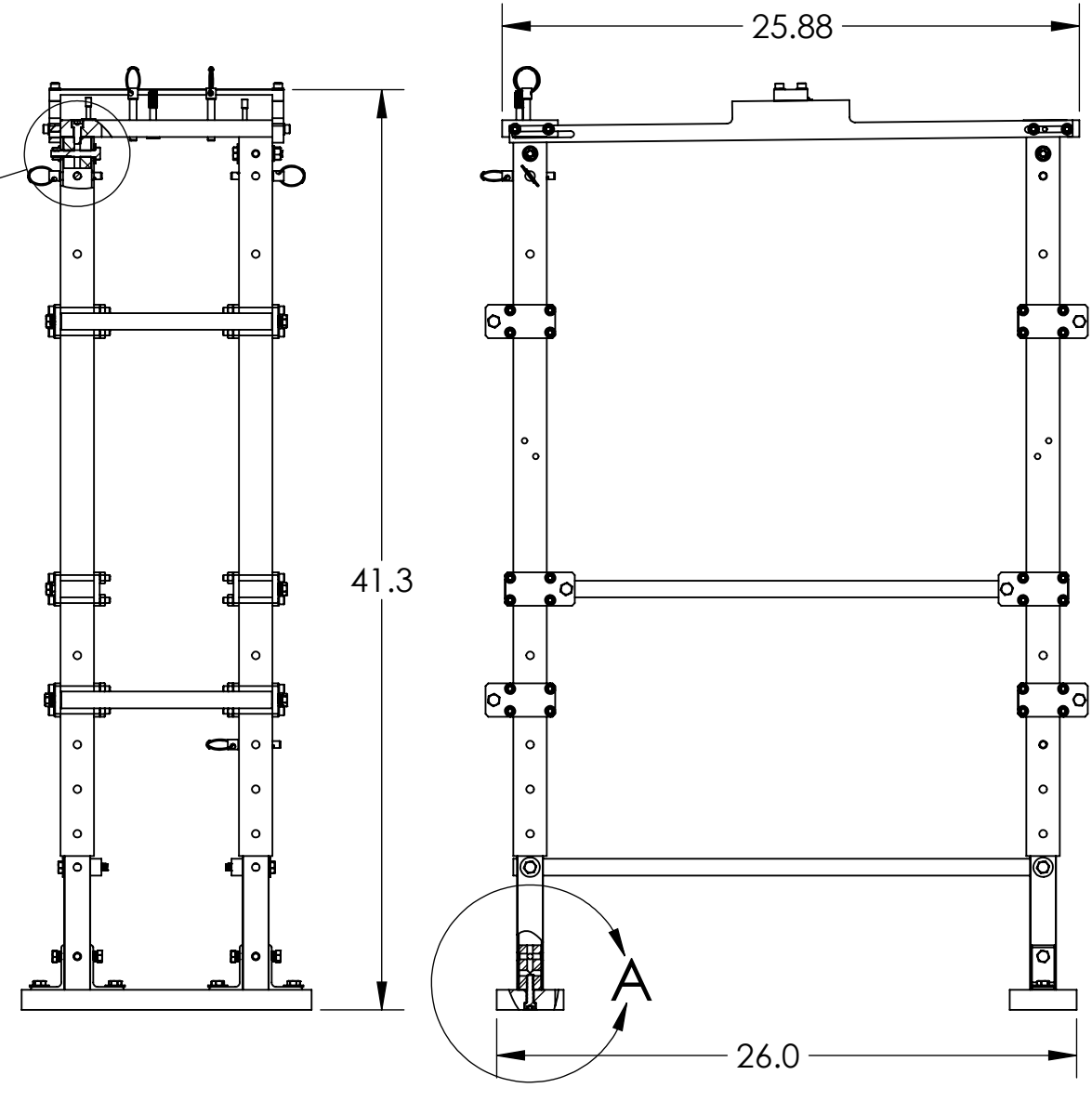
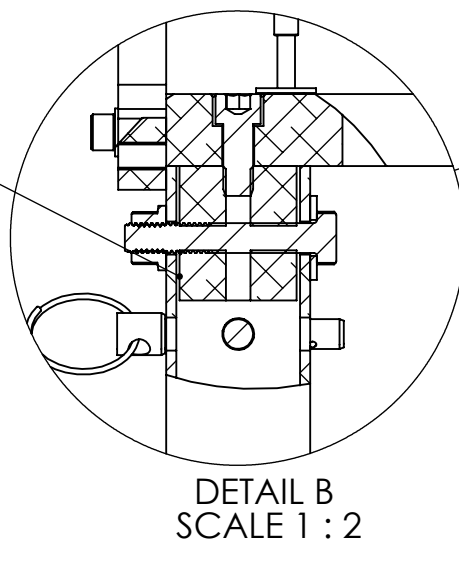
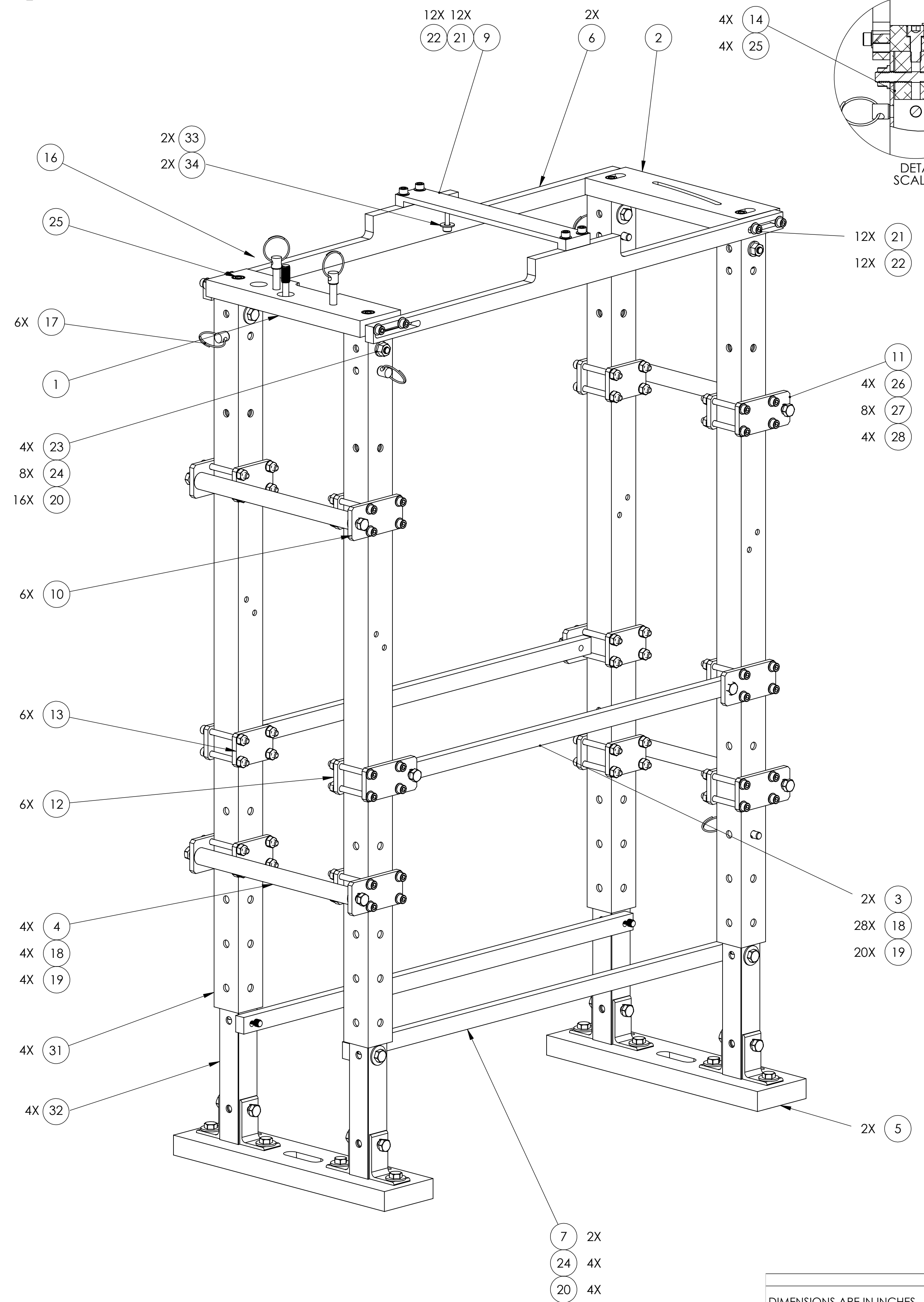


NOTES CONTINUED:
 5. FOR COMPLETE OF INSTALLATION LIFT STAND, GUIDE BLOCK_D1101609 AND END BLOCK_D1101622 MUST BE USED.



REV.	DATE	DCN #	DRAWING TREE #
v1	6 APR 2012	E1100335-v5	-
-	-	-	-
-	-	-	-

ITEM NO.	PART NUMBER	DESCRIPTION	MATERIAL	QTY	SPARE	TOTAL
34	96659A106	WASHER #1/4 X .281 ID X .63 OD; McMASTER	18-8 SSSL	2		0
33		SCREW, SOCKET HEAD CAP, 1/4-20 UNC-2A X 1 LONG, FULLY THREADED	Ag-PLATED 300 SSSL	2		0
32	D1102144-02	TELESCOPE TUBE FRAMING	6061-T6 Al	4		0
31	D1102144-01	TELESCOPE TUBE FRAMING	6061-T6 Al	4		0
30	92200A632	Socket Head Cap Screw_5/16-18 X 1.25 L	18-8 SSSL	4		0
29	WF-38	FLAT WASHER 3/8 SCREW	18-8 SSSL	2		0
28	N-2520-A	HEX NUT 1/4-20	Ag-PLATED 300 SSSL	48		0
27	WF-25	FLAT WASHER 1/4 SCREW SIZE	18-8 SSSL	96		0
26	92185A555	Screw, socket head cap 1/4-20 X 2.5" L	316 SSSL	48		0
25	92200A626	SOCKET HEAD CAP SCREW_5/16-18 X 3/4" L	18-8 SSSL	4		0
24	92245A591	SS HEX HEAD CAP SCREW-5/16-18, 2.0 L	18-8 SSSL	8		0
23	94758A029	FLANGE HEX NUT 5/16-18	18-8 SSSL	4		0
22	90313A203	FLAT WASHER 1/4 SCREW SIZE	18-8 SSSL	12		0
21	92200A541	SOCKET HEAD CAP SCREW, SHC, 1/4-20 x 7/8" L	18-8 SSSL	12		0
20	98370A015	WASHER 5/16 SCREW	18-8 SSSL	16		0
19	98437A112	SPRING LOCK WASHER	18-8 SSSL	20		0
18	92245A580	HEX HEAD CAP SCREW-5/16-18 x 5/8 L	18-8 SSSL	28		0
17	95165A054	QUICK-RELEASE PIN	18-8 SSSL	6		0
16	D1200308	CAPTIVE SCREW 3/8-16 X 1.75 L (C-1628-N)	18-8 SSSL	3		0
15	D1102347	EXTENDED HIDDEN CONNECTOR	6061-T6 Al	4		0
14	D1102348	HIDDEN CONNECTOR	6061-T6 Al	4		0
13	D1102224-02	HANDLE TAB CLAMP_LEFT BOSS	6061-T6 Al	6		0
12	D1102224-01	HANDLE TAB CLAMP_RIGHT BOSS	6061-T6 Al	6		0
11	D1102223-02	HANDLE TAB_LEFT BOSS	6061-T6 Al	6		0
10	D1102223-01	HANDLE TAB_RIGHT BOSS	6061-T6 Al	6		0
9	D1102062	UPPER CLAMP	6061-T6 Al	1		0
8	D1102039	ANGLE CORNER BRACKET	6061-T6 Al	8		0
7	D1102038	LOWER SIDE BRACE	6061-T6 Al	2		0
6	D1102026	SIDE BEAM	6061-T6 Al	2		0
5	D1102024	FLOOR-MOUNTING BASE	6061-T6 Al	2		0
4	D1102023	ROUND BAR HANDLE	6061-T6 Al	4		0
3	D1102022	SIDE BRACE	6061-T6 Al	2		0
2	D1200307	IN CLAMP SUPPORT, BSC1-BSC3 at H1-L1	6061-T6 Al	1		0
1	D1200306	GUIDE BLOCK SUPPORT, BSC 1-BSC3_H1-L1	6061-T6 Al	1		0
ITEM NO.	PART NUMBER	DESCRIPTION	MATERIAL	QTY	SPARE	TOTAL

NOTES AND TOLERANCES: (UNLESS OTHERWISE SPECIFIED)
 1. INTERPRET DRAWING PER ASME Y14.5-1994.
 2. REMOVE ALL SHARP EDGES, .005-.015, FOR MACHINED PARTS. ROUND ALL EDGES APPROXIMATELY R.02 FOR SHEET METAL PARTS.
 3. DO NOT SCALE FROM DRAWING.
 4. ALL MACHINING FLUIDS MUST BE FULLY SYNTHETIC, FULLY WATER SOLUBLE AND FREE OF SULFUR, SILICONE, AND CHLORINE.

DIMENSIONS ARE IN INCHES
 TOLERANCES:
 .XX ± .03
 .XXX ± .010
 ANGULAR ± 1.0°

MATERIAL N/A **FINISH** N/A μinch

LIGO CALIFORNIA INSTITUTE OF TECHNOLOGY MASSACHUSETTS INSTITUTE OF TECHNOLOGY

ADVANCED LIGO **AOS**

PART NAME ACB, INSTALLATION LIFT STAND BSC3_H1-L1

DESIGNER TQ. NGUYEN **DATE** 12 OCT 2011 **SIZE** **DWG. NO.** **REV.**
DRAFTER TQ. NGUYEN **DATE** 6 APR 2012 **D** **D1200575** **v1**
CHECKER L. AUSTIN **DATE** 26 MAR 2012
APPROVAL C. TORRIE **DATE** 26 MAR 2012 **SCALE:** 1:3 **PROJECTION:** **SHEET 1 OF 3**

D1200575_Am Conyly Beffle_Installation Lift Stand BSC3_H1-L1_P1 PART PDM REV: X-097 DRAWING PDM REV: X-008

8

7

6

5

4

3

2

1

H

G

F

E

D

C

B

A

H

G

F

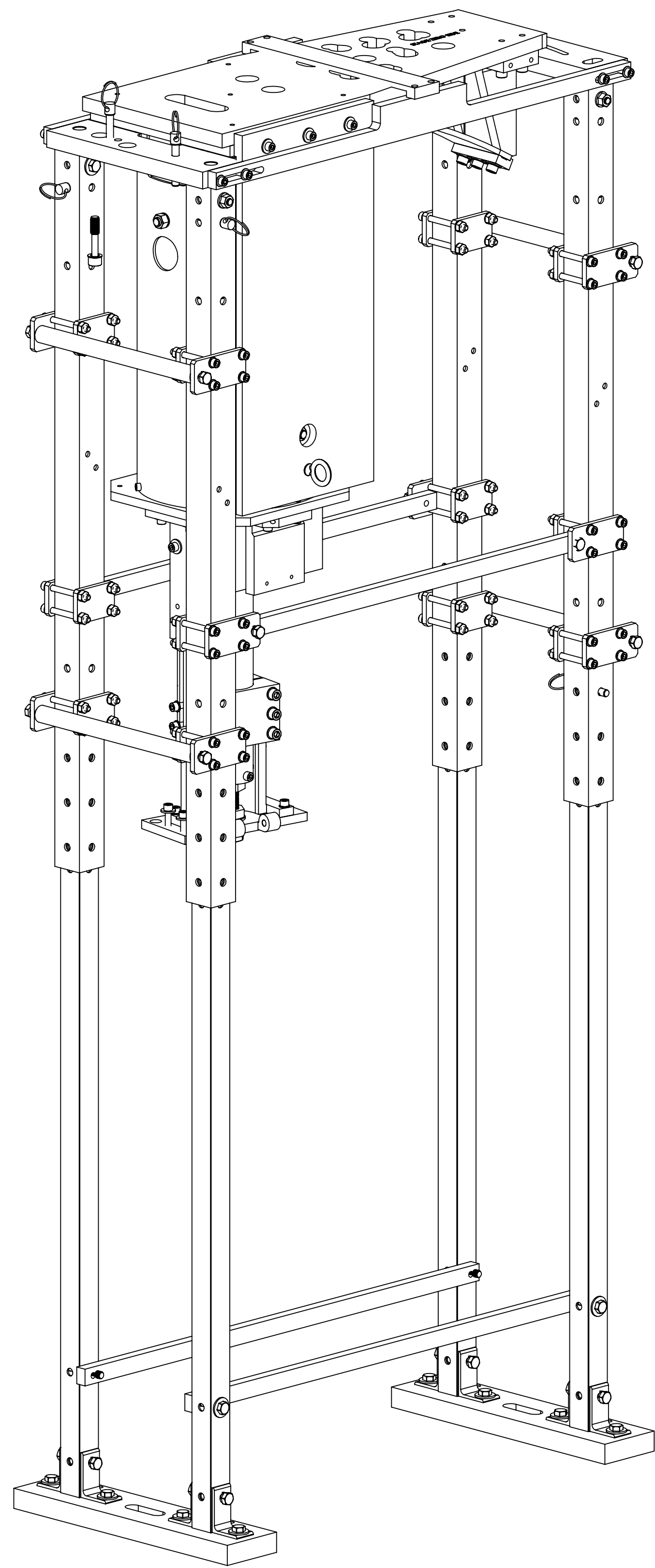
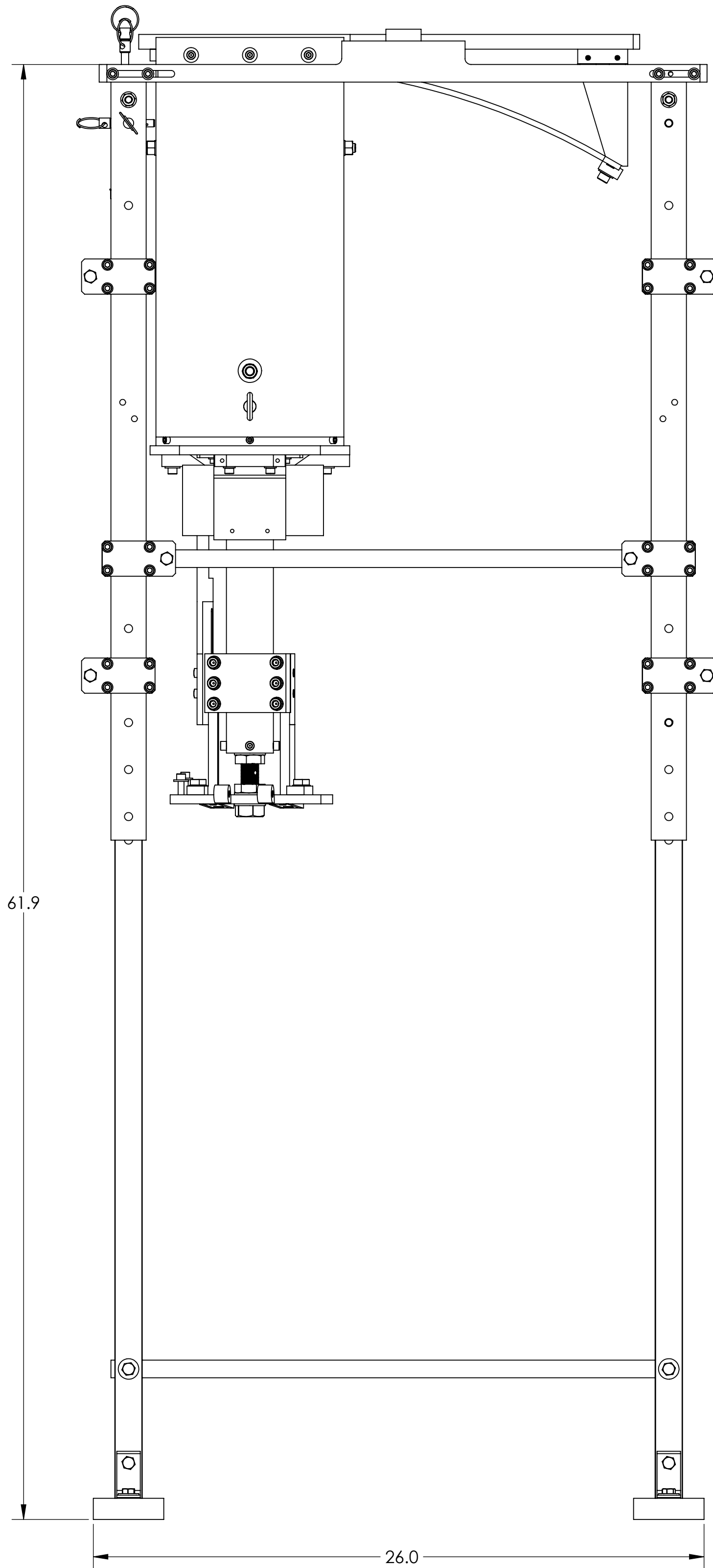
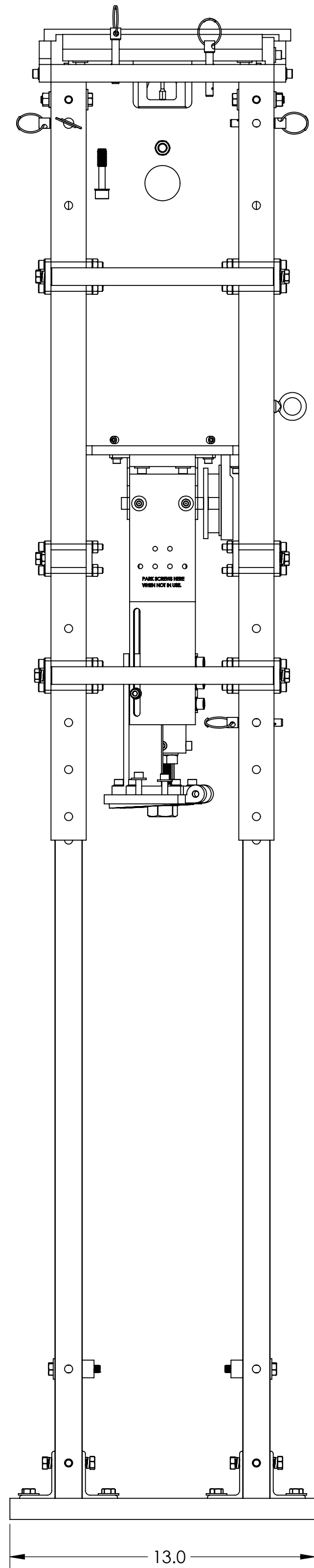
E


D

C

B

A



LIGO CALIFORNIA INSTITUTE OF TECHNOLOGY MASSACHUSETTS INSTITUTE OF TECHNOLOGY	
SIZE DWG. NO.	REV.
D D1200575	v1
SCALE: 1:4	PROJECTION:  SHEET 2 OF 3

D:\200575_Arm_Corvly_Baffle_Installation_IH\Stand_BSC3.H-1.1_PART_PDM_REV-X-005_DRAWING_PDM_REV-X-008

8

7

6

5

4

3

2

1

H

G

F

E

D

C

B

A

H

G

F

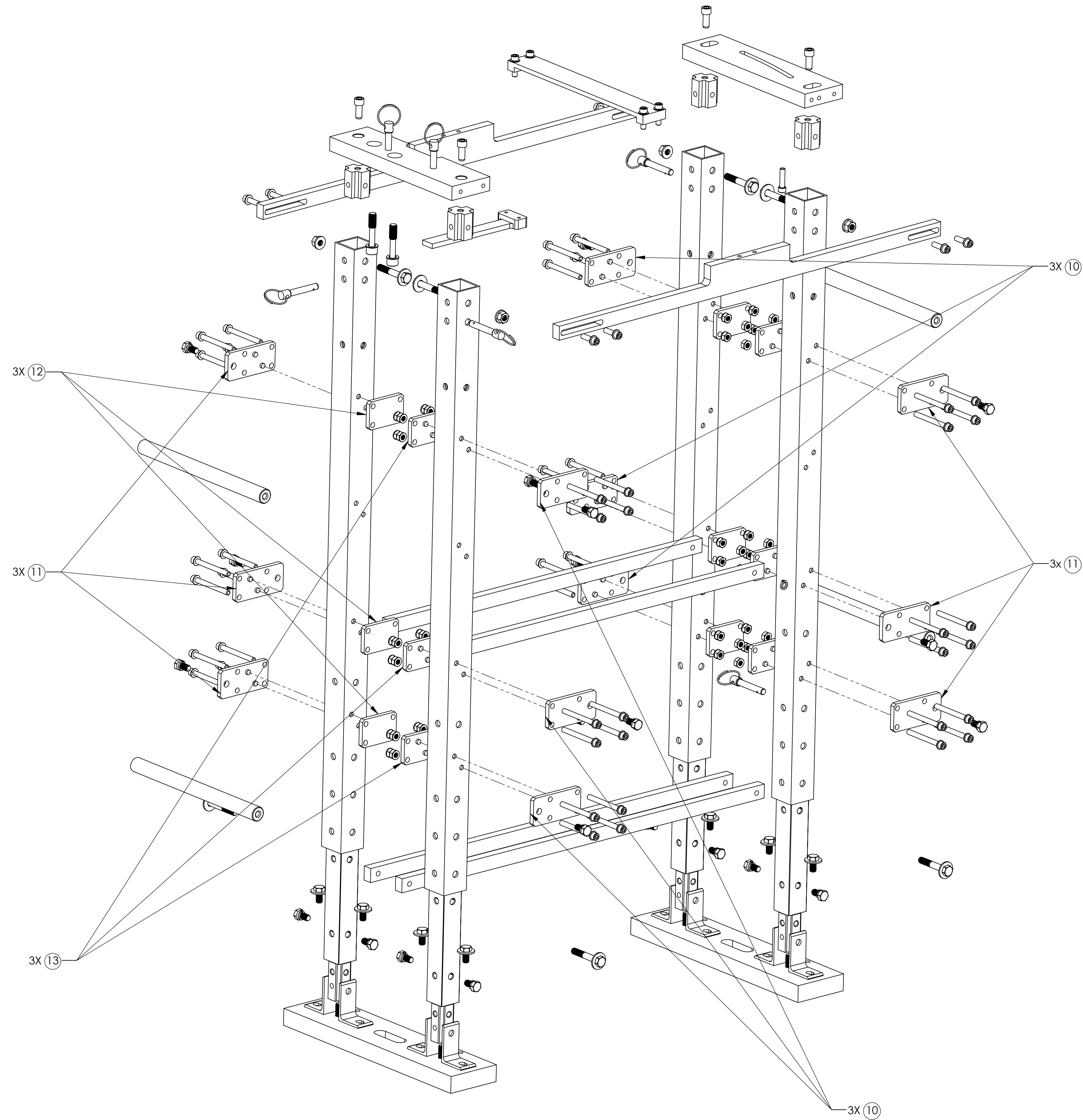
E

D

C

B

A



D1200575_Arm Coevly Beffle_Installation (H) Stand BSC3.H1-1.1 PART PDM REV: X-097 DRAWING PDM REV: X-008

LIGO CALIFORNIA INSTITUTE OF TECHNOLOGY MASSACHUSETTS INSTITUTE OF TECHNOLOGY		REV.
SIZE DWG. NO.	D1200575	v1
SCALE: 1:3	PROJECTION:	SHEET 3 OF 3

8

7

6

5

4

3

2

1