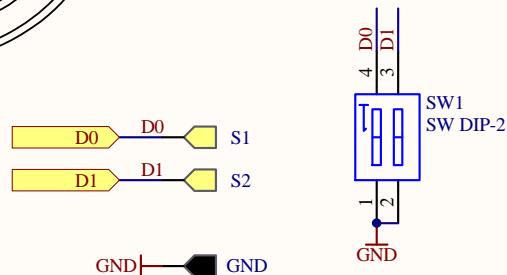
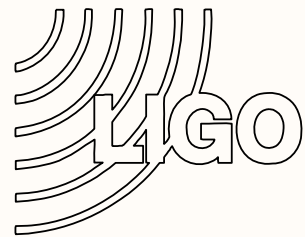


The board to board spacing is 3.200".
 The actual board width is 3.160".
 The board height is 4.500".
 The cut-out for the DIN connector starts 1.700" back.
 The cut-out is 0.147" deep.
 The board is placed a 0.000" behind the front panel.

For a standalone board, the power supplies are provided through the 4-pin power connector on the rear of the board.

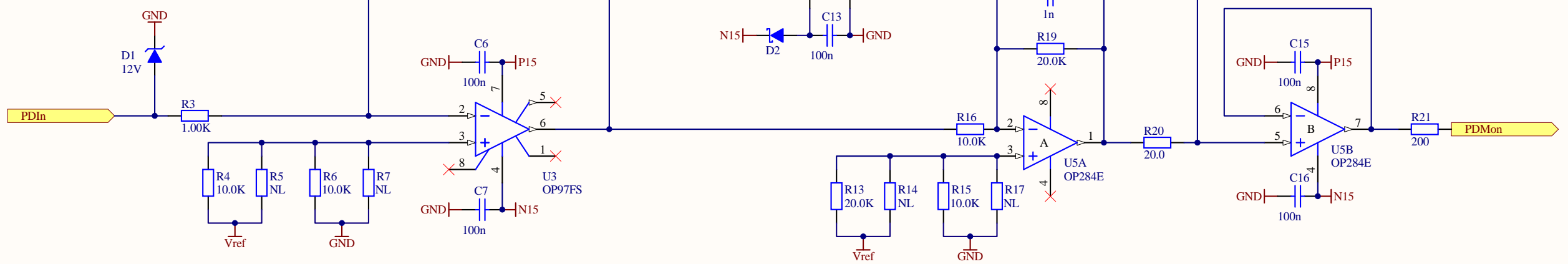
Title Dual DC Photodiode Amplifier		
Size B	Number D1200543	Revision 1
Date: 8/1/2012	Sheet1 of 2	
File: C:\Users\...\DualPDAmpl1.SchDoc	Drawn By: Daniel Hoak	



Connections for external gain setting.
Gray code rotary switch:
Digi-Key GH7411-ND

Dip switches need to be off
for adjusting the gain by
rotary switch or remote.

Gain	D1	D0
0dB	-	-
10dB	-	x
20dB	x	x
30dB	x	-



Title		
Dual DC Photodiode Amplifier		
Size	Number	Revision
B	D1200543	1
Date:	8/1/2012	Sheet2 of 2
File:	C:\Users\...\DualPDamp2.SchDoc	Drawn By: Daniel Hoak