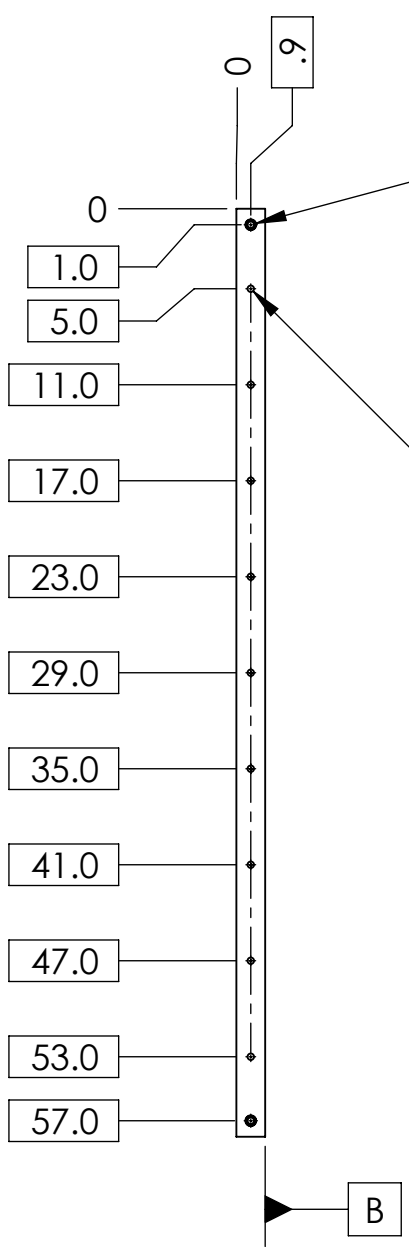


8 7 6 5 4 3 2 1

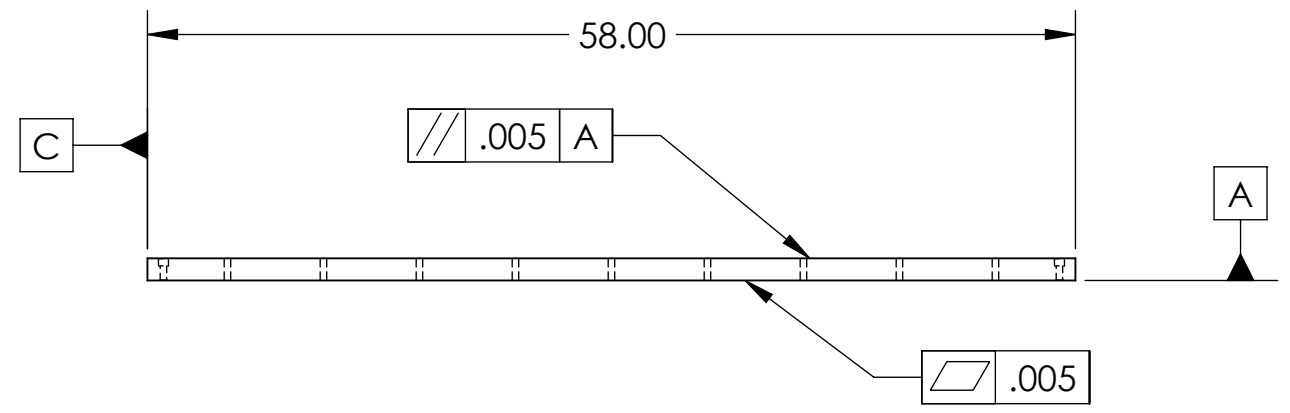
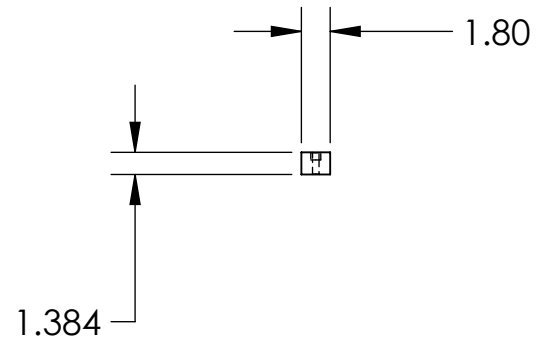
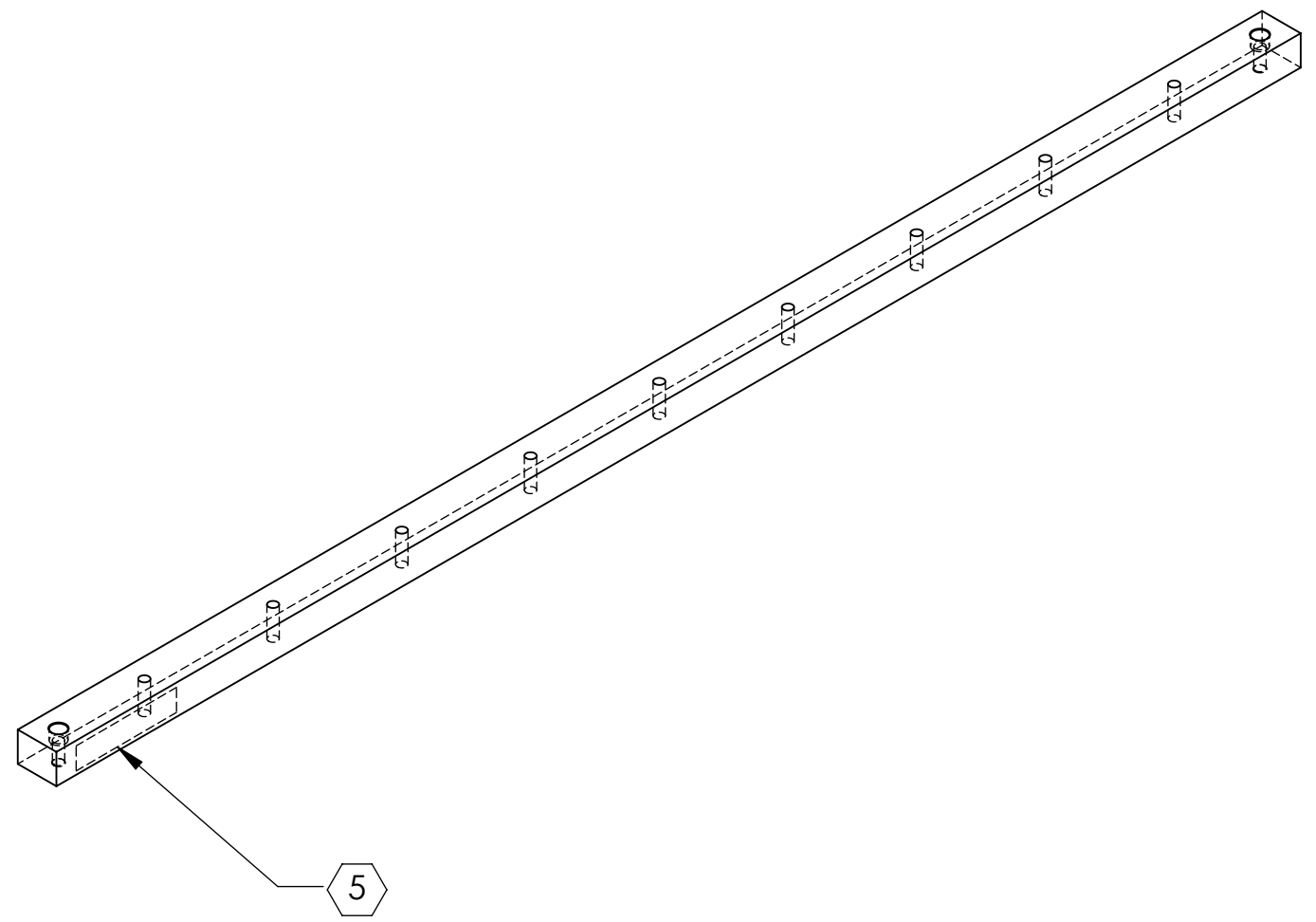
NOTES CONTINUED:
 5. SCRIBE, ENGRAVE (A VIBRATORY TOOL MAY BE USED), LASER MARK OR MECHANICALLY STAMP (NO INKS OR DYES) DRAWING PART NUMBER, REVISION (AND VARIANT OR "TYPE" IF APPLICABLE) ON NOTED SURFACE OF PART FOLLOWED ON THE NEXT LINE WITH A THREE DIGIT SERIAL NUMBER. SERIAL NUMBERS START AT 001 FOR THE FIRST ARTICLE AND PROCEED CONSECUTIVELY. USE MINIMUM 0.12" HIGH CHARACTERS, UNLESS THE SIZE OF THE PART DICTATES SMALLER CHARACTERS. EXAMPLE: DXXXXXX-VY, TYPE-XX, S/N XXX
 6. MACHINE ALL SURFACES TO REMOVE OXIDES AND MILL FINISH. USE OF ABRASIVE REMOVAL TECHNIQUES IS NOT ALLOWED.
 7. ALL PARTS SHALL BE MANUFACTURED IN ACCORDANCE WITH LIGO SPECIFICATION E0900364.

REV.	DATE	DCN #	DRAWING TREE #
-	-	-	-
-	-	-	-
-	-	-	-



2X ϕ .406 THRU ALL
 \square ϕ .625 ∇ .48
 \sphericalangle ϕ .68 X 90°, NEAR SIDE
 \sphericalangle ϕ .46 X 90°, FAR SIDE
 \oplus .010 A B C

9X ϕ .406 THRU ALL
 \oplus .010 A B C



NOTES AND TOLERANCES: (UNLESS OTHERWISE SPECIFIED)				LIGO CALIFORNIA INSTITUTE OF TECHNOLOGY MASSACHUSETTS INSTITUTE OF TECHNOLOGY		PART NAME	
DIMENSIONS ARE IN INCHES				SYSTEM		HAM ISI SEI	
TOLERANCES: .XX ± .02 .XXX ± .005				NEXT ASSY		DESIGNER SBARNUM 23 Mar 2012	
ANGULAR ± 0.5°				MATERIAL		DRAFTER SBARNUM 23 Mar 2012	
6061 Alloy				FINISH		CHECKER	
63 μ inch				D0901809		APPROVAL	
				HAM ISI Spacer		SIZE DWG. NO.	
						B D1200521	
						REV. v1	
						SCALE: 1:12 PROJECTION: SHEET 1 OF 1	

D1200521 Riser for HAM1-L1 ISI at LIGO, PART PDM REV: X-000, DRAWING PDM REV: X-002

8 7 6 5 4 3 2 1