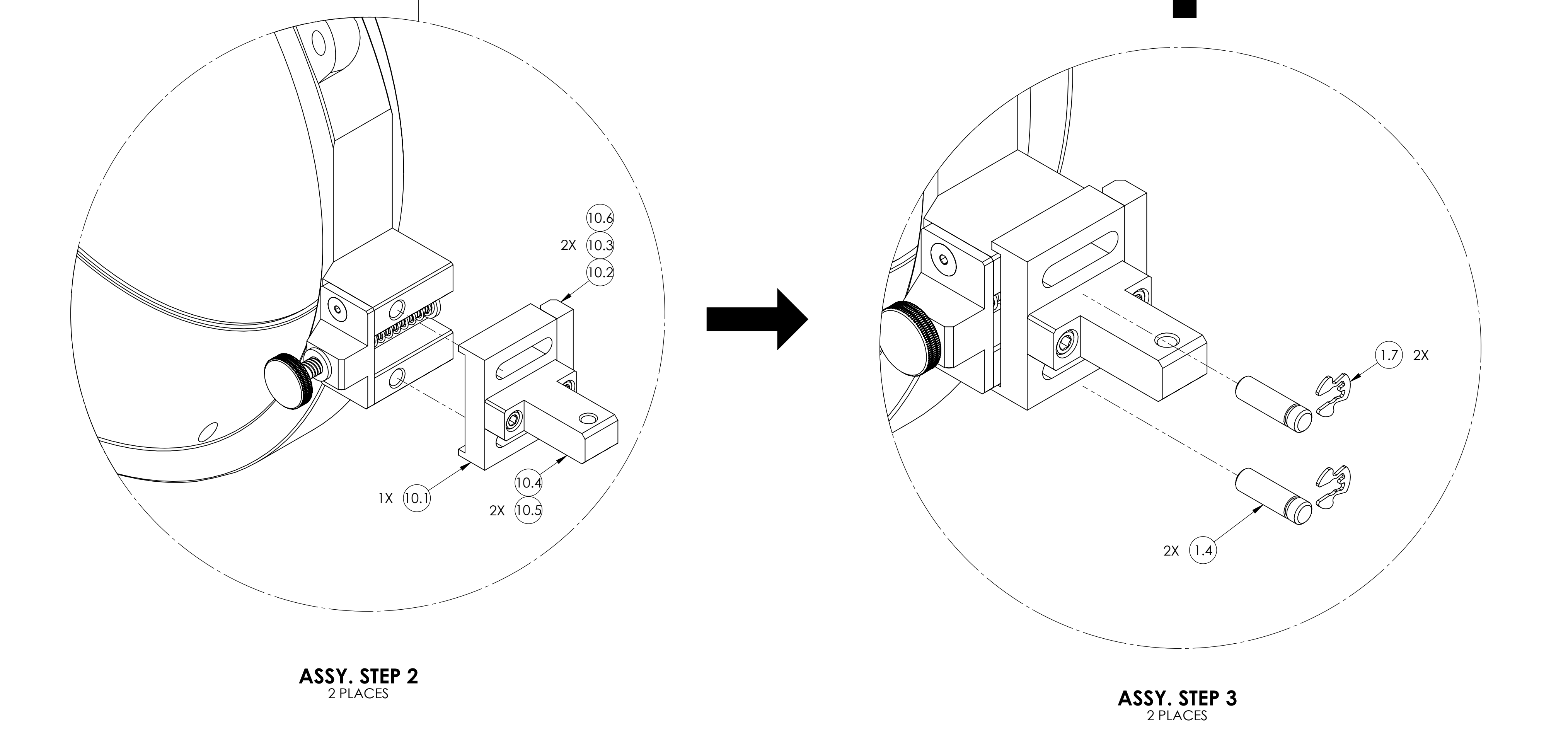
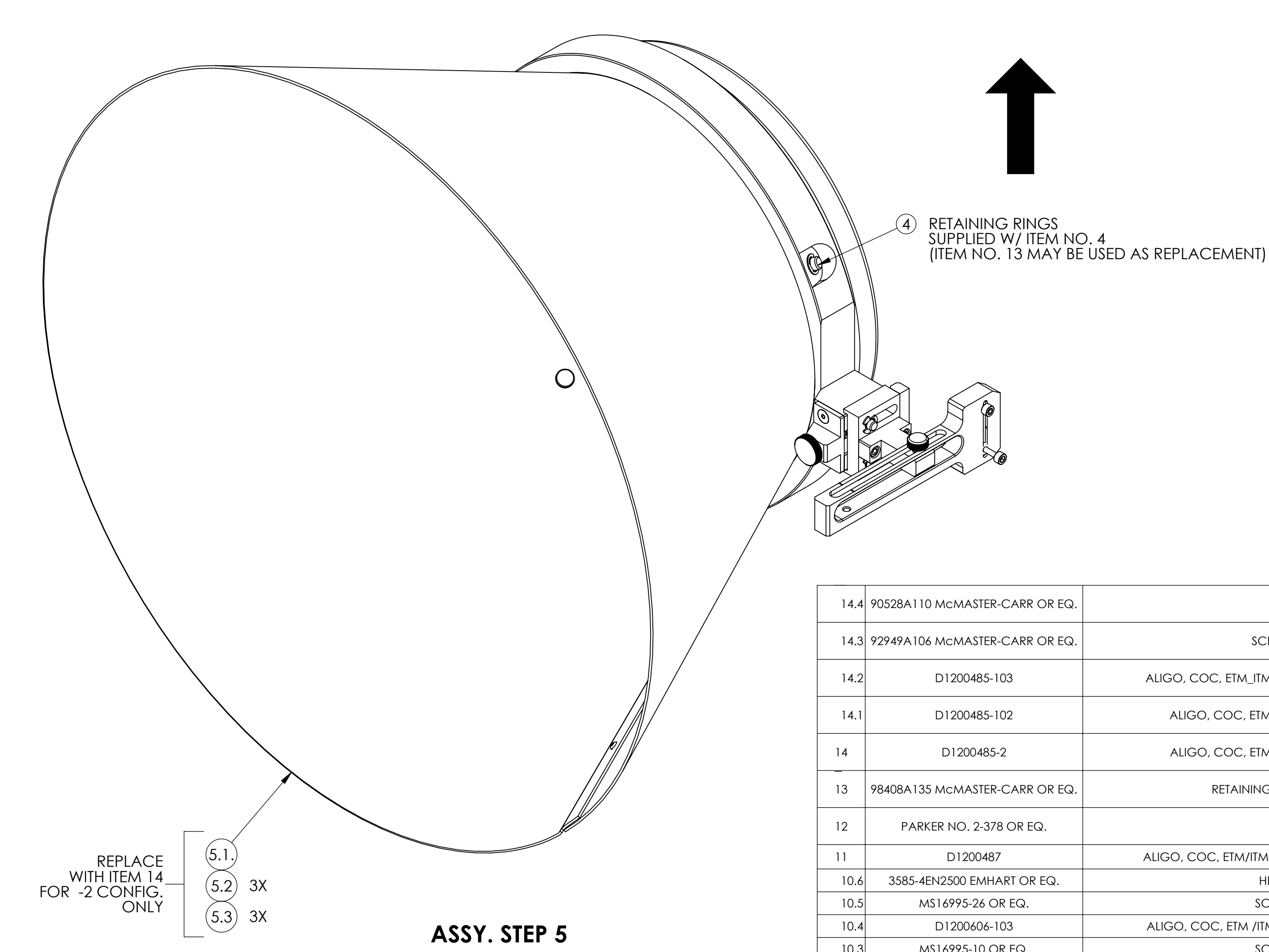
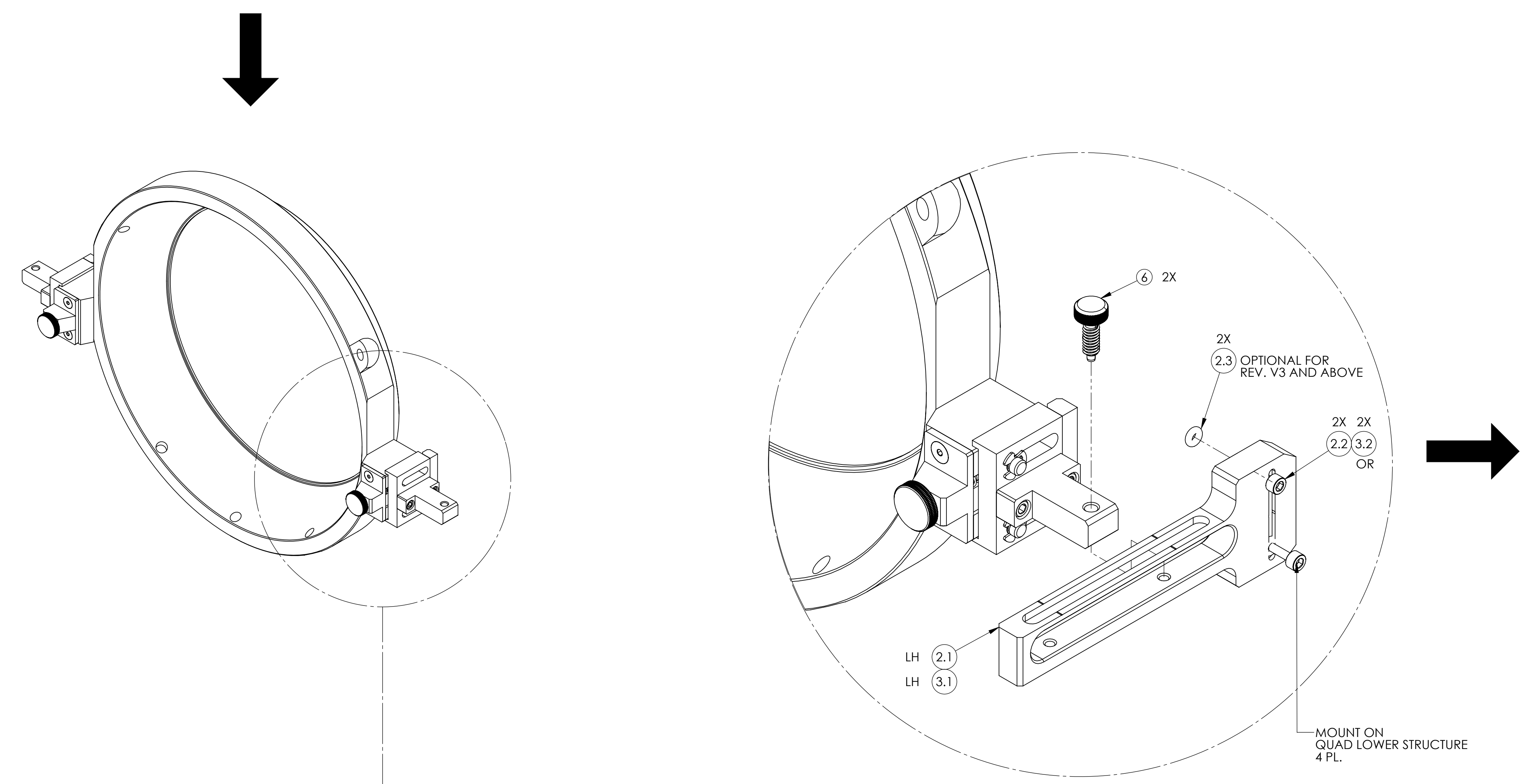
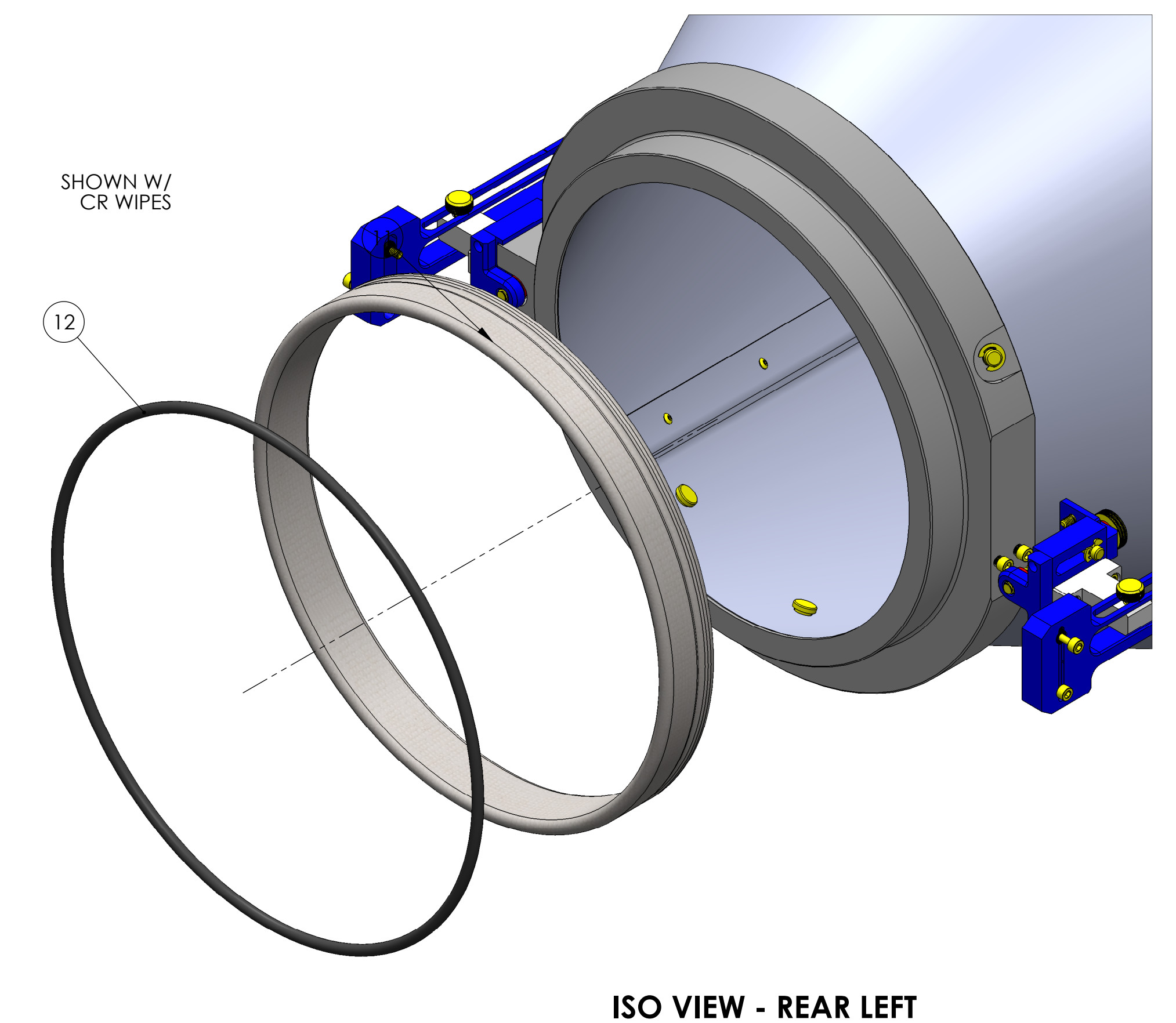
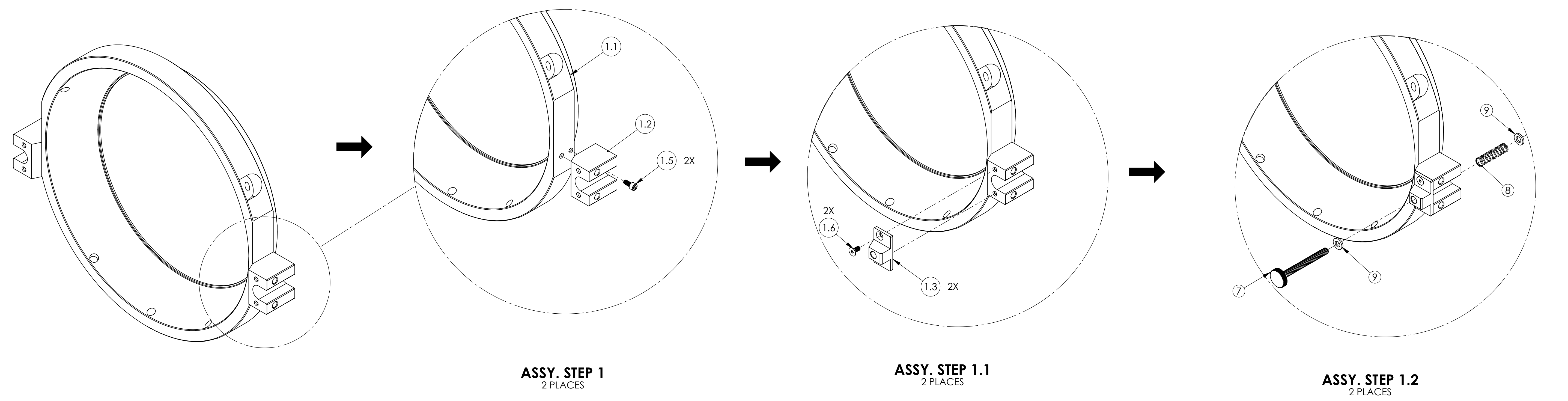


REV.	DATE	DCN #	DRAWING TREE #
v1	30 MAR 2012	-	-
v4	17 JUN 2013	E1300528-x0	-
-	-	-	-



ITEM NO.	PART NUMBER	DESCRIPTION	-1 QTY.	-2 QTY.
14.4	90528A110 McMaster-Carr OR EQ.	SPEED NUT, 4-40	-	3
14.3	92949A106 McMaster-Carr OR EQ.	SCREW, BHSC, 4-40 X .18 LG.	-	3
14.2	D1200485-103	ALIGO, COC, ETM/ITM FC SPRAY GUARD, E-COLLAR (ITM, COVER)	-	1
14.1	D1200485-102	ALIGO, COC, ETM/ITM FC SPRAY GUARD, E-COLLAR (ITM)	-	1
14	D1200485-2	ALIGO, COC, ETM/ITM FC SPRAY GUARD, E-COLLAR (ITM)	-	1
13	98408A135 McMaster-Carr OR EQ.	RETAINING RING, 5/16 SHAFT DIA., SIDE MT.	A/R	A/R
12	PARKER NO. 2-378 OR EQ.	O-RING, 3/16 WIDE	1	1
11	D1200487	ALIGO, COC, ETM/ITM FC SPRAY GUARD, REUSABLE CR WIPE BAND	1	1
10.6	3585-4EN2500 EMHART OR EQ.	HELICOIL, 1/4-20 X 25 LG.	1	1
10.5	MS16995-26 OR EQ.	SCREW, SHC, 8-32 X .50 LG.	2	2
10.4	D1200606-103	ALIGO, COC, ETM/ITM FC SPRAY GUARD ASSY., RET PLUNGER MT.	1	1
10.3	MS16995-10 OR EQ.	SCREW, SHC, 4-40 X .38 LG.	2	2
10.2	D1200606-102	ALIGO, COC, ETM/ITM FC SPRAY GUARD ASSY., THREADED BLOCK	1	1
10.1	D1200606-101	ALIGO, COC, ETM/ITM FC SPRAY GUARD ASSY., CARRIAGE	1	1
10	D1200606	ALIGO, COC, ETM/ITM FC SPRAY GUARD, CARRIAGE ASSY.	2	2
9	90945A761	1/4 FLAT WASHER, NASA20-C416, MC90945A761	4	4
8	9435K76 McMaster-Carr OR EQ.	COMPRESSION SPRING, .36 OD X 1.50 LG. X .032 WIRE	2	2
7	91746A776 McMaster-Carr OR EQ.	THUMB SCREW, 1/4-20 X 2.5 LG.	2	2
6	84935A37 McMaster-Carr	RETRACTABLE SPRING PLUNGER, 1/4-20	2	2
5.3	90528A110 McMaster-Carr OR EQ.	SPEED NUT, 4-40	3	-
5.2	92949A106 McMaster-Carr OR EQ.	SCREW, BHSC, 4-40 X .18 LG.	3	-
5.1	D1200485-101	ALIGO, COC, ETM/ITM FC SPRAY GUARD, E-COLLAR (ETM)	1	-
5	D1200485-1	ALIGO, COC, ETM/ITM FC SPRAY GUARD, E-COLLAR (ETM)	1	-
4	92235A320 McMaster-Carr OR EQ.	CLEVIS PIN, 5/16 DIA. X .75 LG. (GROOVED, W/ RETAINING RINGS)	5	5
3.3	9464K108 McMaster-Carr OR EQ.	O-RING, .112 ID X .103 ID, X .318 OD.	2	2
3.2	D1200491	ALIGO, COC, ETM/ITM FC SPRAY GUARD ASSY., SCREW, SHC, 8-32 X .75 LG., GROOVED	2	2
3.1	D1200486-102	ALIGO, COC, ETM/ITM FC SPRAY GUARD ASSY., LH SLIDE	1	1
3	D1200486-2	ALIGO, COC, ETM/ITM FC SPRAY GUARD ASSY., LH SLIDE ASSY.	1	1
2.3	9464K108 McMaster-Carr OR EQ.	O-RING, .112 ID X .103 ID, X .318 OD.	2	2
2.2	D1200491	ALIGO, COC, ETM/ITM FC SPRAY GUARD ASSY., SCREW, SHC, 8-32 X .75 LG., GROOVED	2	2
2.1	D1200486-101	ALIGO, COC, ETM/ITM FC SPRAY GUARD ASSY., RH SLIDE	1	1
2	D1200486-1	ALIGO, COC, ETM/ITM FC SPRAY GUARD ASSY., RH SLIDE ASSY.	1	1
1.7	94751A757 McMaster-Carr OR EQ.	RETAINING RING, SIDE MT., 1/4 SHAFT	4	4
1.6	MS24671-13 OR EQ.	SCREW, FHSC, 8-32 X .38 LG.	4	4
1.5	MS16995-25 OR EQ.	SCREW, SHC, 8-32 X .38 LG.	4	4
1.4	D1200484-104	ALIGO, COC, ETM/ITM FC SPRAY GUARD ASSY., DOWEL PIN (GROOVED)	4	4
1.3	D1200484-103	ALIGO, COC, ETM/ITM FC SPRAY GUARD ASSY., STRIKE PLATE	2	2
1.2	D1200484-102	ALIGO, COC, ETM/ITM FC SPRAY GUARD ASSY., GUIDE RAIL	2	2
1.1	D1200484-101	ALIGO, COC, ETM/ITM FC SPRAY GUARD, MT. RING	1	1
5.1	D1200484	ALIGO, COC, ETM/ITM FC SPRAY GUARD, MT. RING	1	1
ITEM NO.	PART NUMBER	DESCRIPTION	-1 QTY.	-2 QTY.

NOTES AND TOLERANCES: (UNLESS OTHERWISE SPECIFIED)

LIIGO CALIFORNIA INSTITUTE OF TECHNOLOGY
MASSACHUSETTS INSTITUTE OF TECHNOLOGY

SYSTEM: **ADVANCED LIIGO** SUB-SYSTEM: **COC**

MATERIAL: N/A FINISH: N/A µinch NEXT ASSY: MULTIPLE

DESIGNER: ESANCHEZ DATE: 16 MAR 2012 SIZE: E DWG. NO.: **D1200490** REV.: v4

DRAFTER: ESANCHEZ DATE: 30 MAR 2012

CHECKER: SEE DCC

APPROVAL: SEE DCC

SCALE: 1:2 PROJECTION: SHEET 1 OF 1