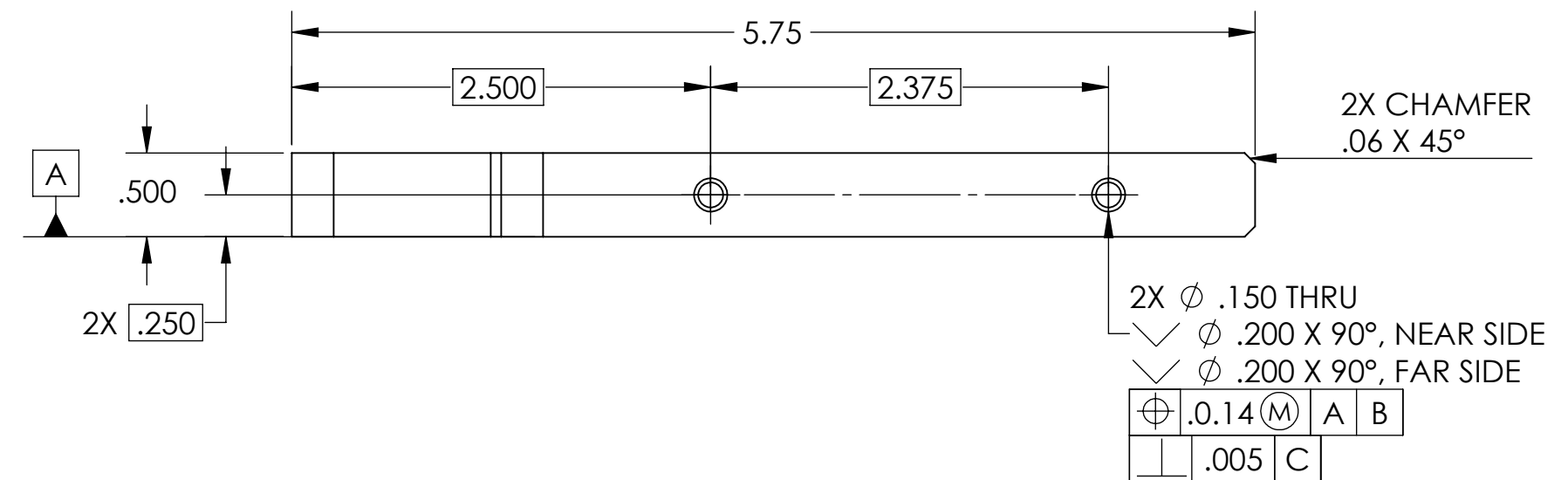
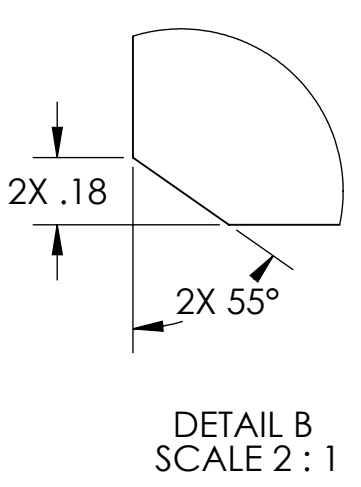
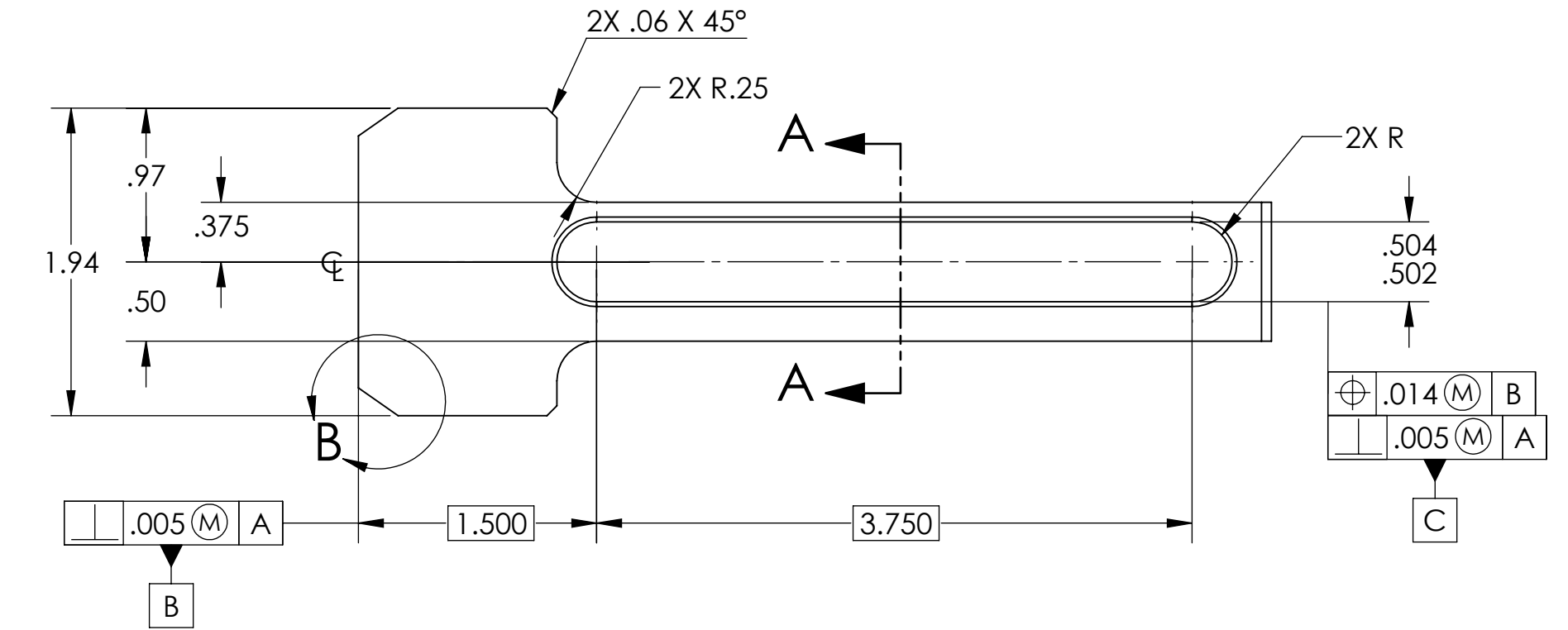
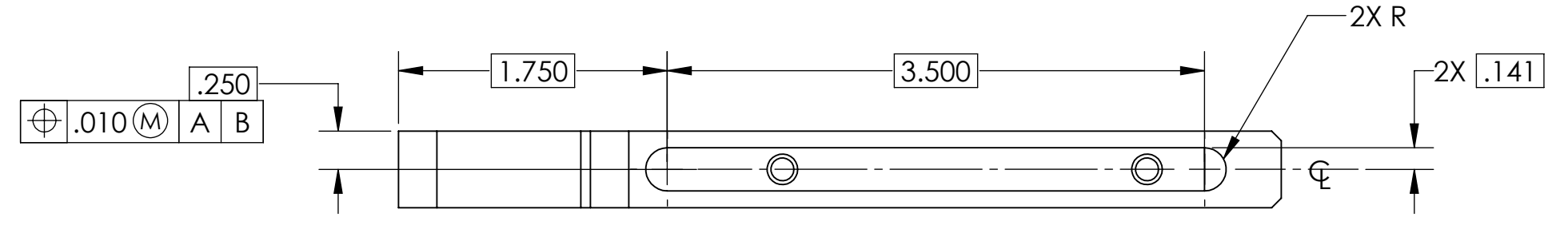
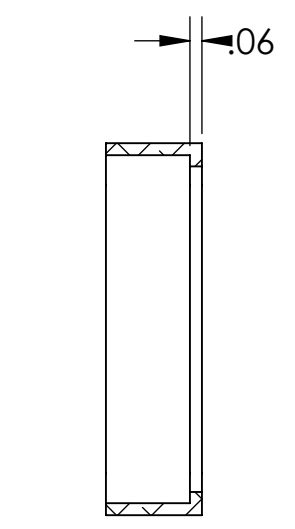
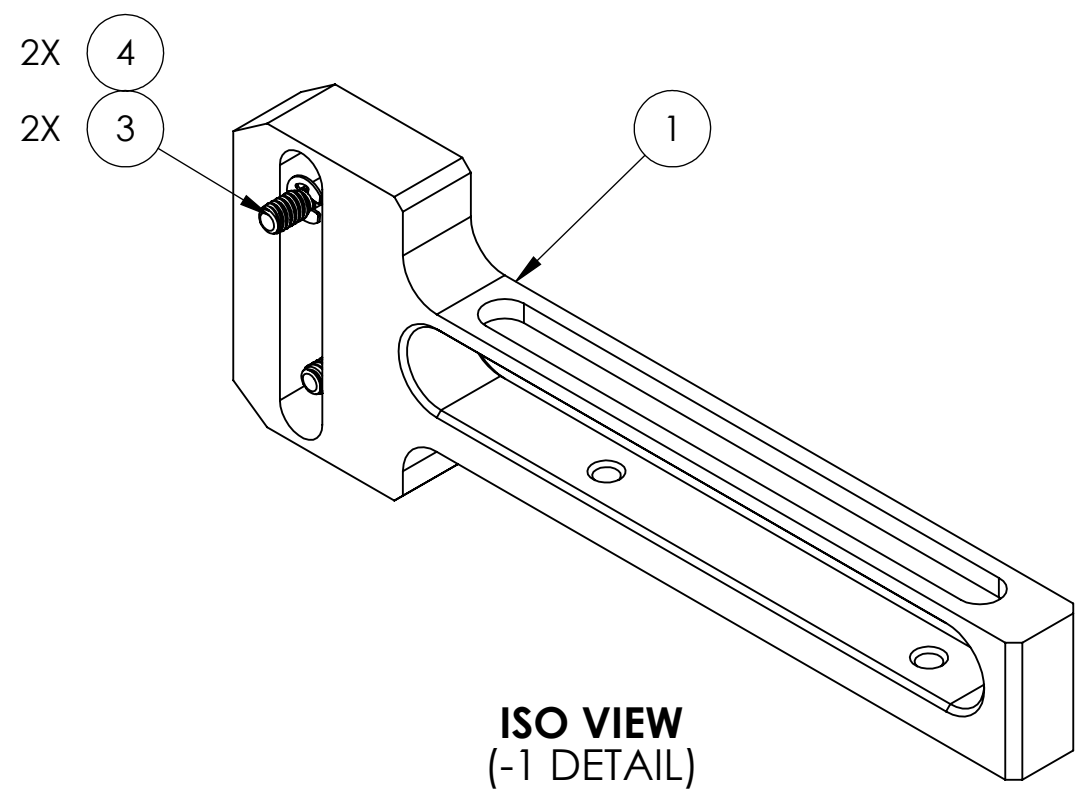
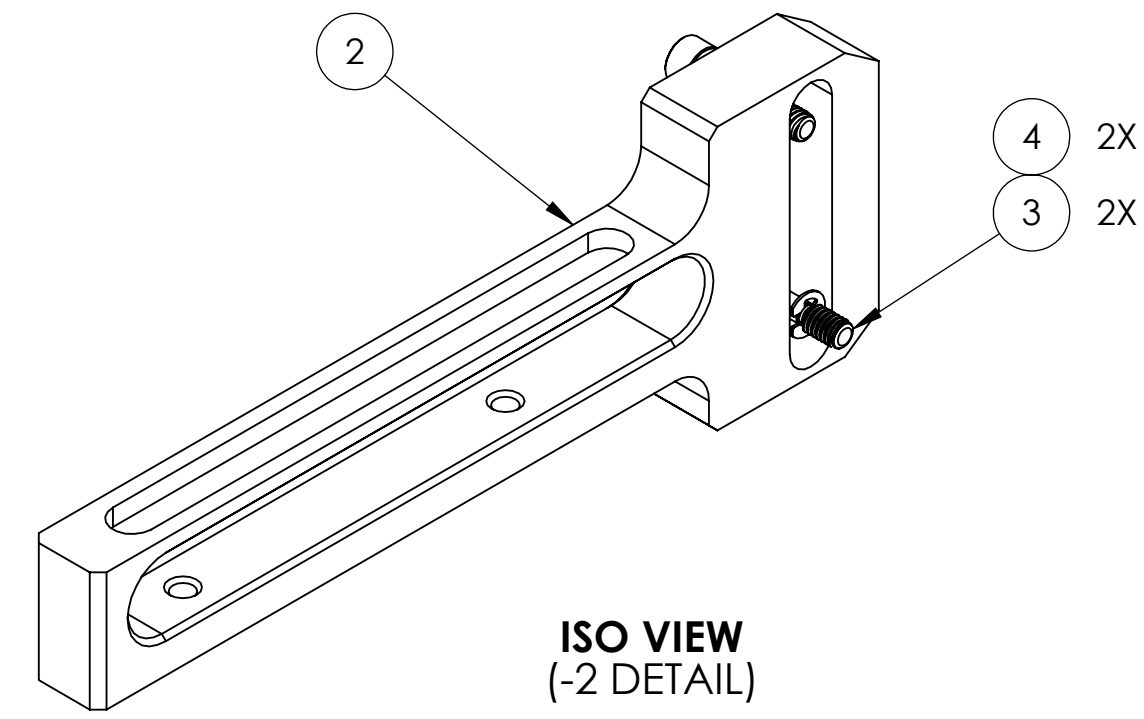


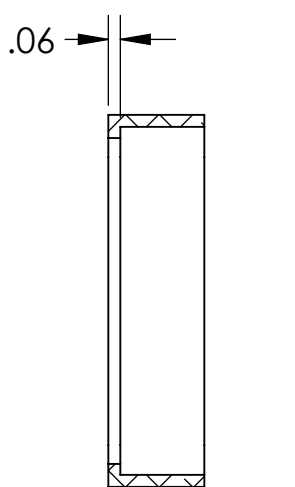
- NOTES CONTINUED:**
5. SCRIBE, ENGRAVE (A VIBRATORY TOOL MAY BE USED), LASER MARK OR MECHANICALLY STAMP (NO INKS OR DYES) DRAWING PART NUMBER, REVISION (AND VARIANT OR "TYPE" IF APPLICABLE) ON NOTED SURFACE OF PART FOLLOWED ON THE NEXT LINE WITH A THREE DIGIT SERIAL NUMBER. SERIAL NUMBERS START AT 001 FOR THE FIRST ARTICLE AND PROCEED CONSECUTIVELY. USE MINIMUM 0.12" HIGH CHARACTERS, UNLESS THE SIZE OF THE PART DICTATES SMALLER CHARACTERS. EXAMPLE: DXXXXXX-VY, TYPE-XX, S/N XXX
  6. MACHINE ALL SURFACES TO REMOVE OXIDES AND MILL FINISH. USE OF ABRASIVE REMOVAL TECHNIQUES IS NOT ALLOWED. REFER TO LIGO-E0900364.
  7. ALL PARTS SHALL BE MANUFACTURED IN ACCORDANCE WITH LIGO SPECIFICATION E0900364.
  8. ALL MATERIAL IS TO BE VIRGIN MATERIAL (I.E. NO WELD REPAIRS, PLUGS OR RECYCLED MATERIAL). NO REPAIRS SHALL BE MADE UNLESS APPROVED IN ADVANCE, AND IN WRITING, BY LIGO LABORATORY. REFER TO LIGO-E0900364.
  9. UNLESS OTHERWISE SPECIFIED, MACHINE FILLET RADII .015 MAX.



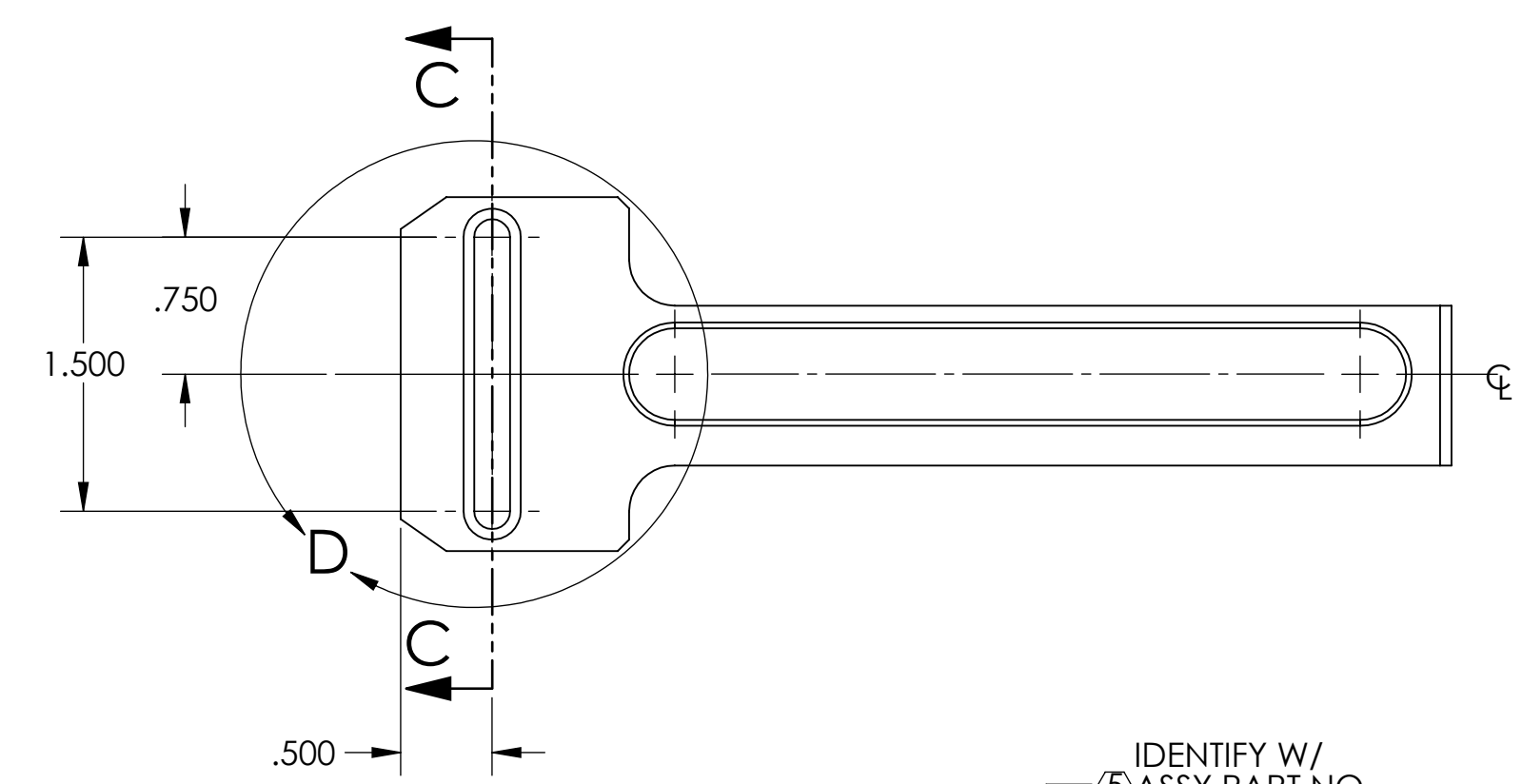
**BLANK**  
(MAKE FROM: 6061-T6 AL)



SECTION C-C

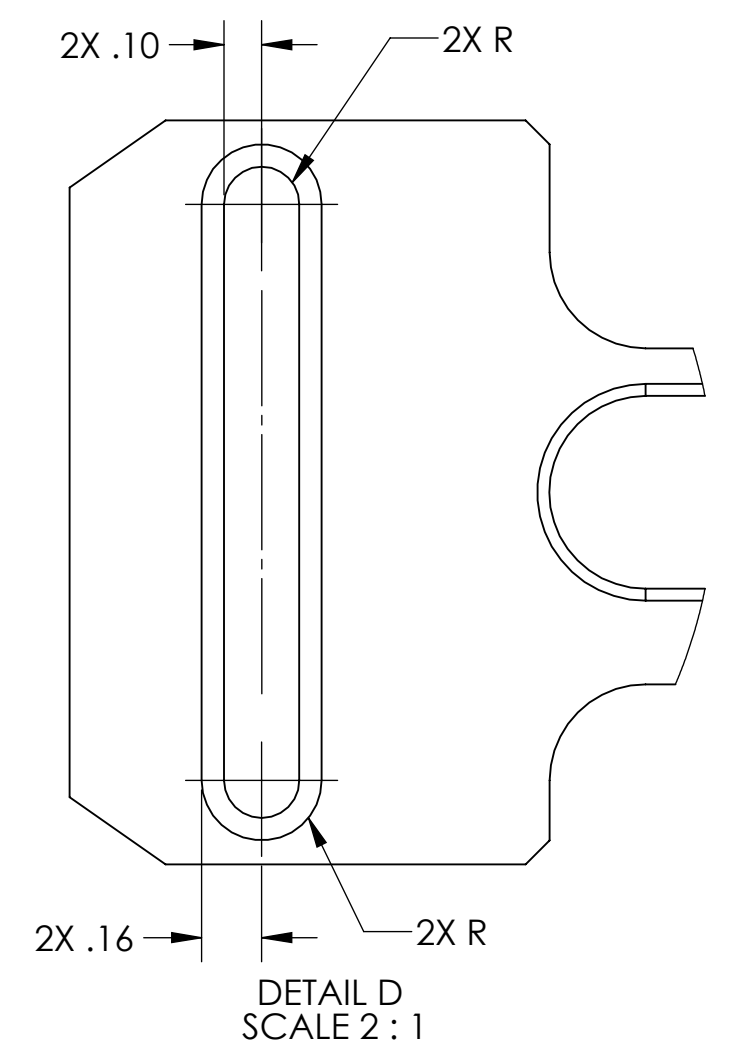
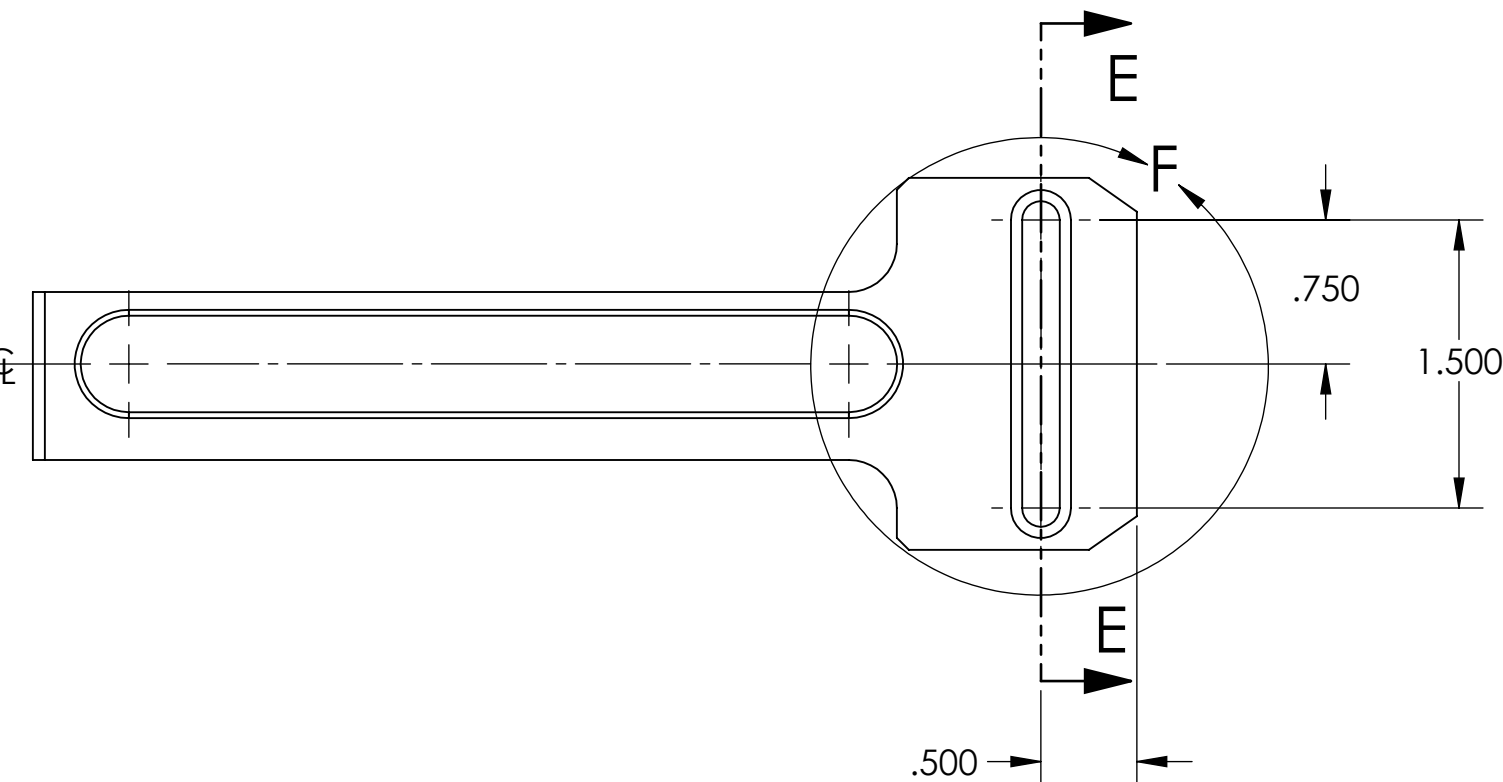


SECTION E-E

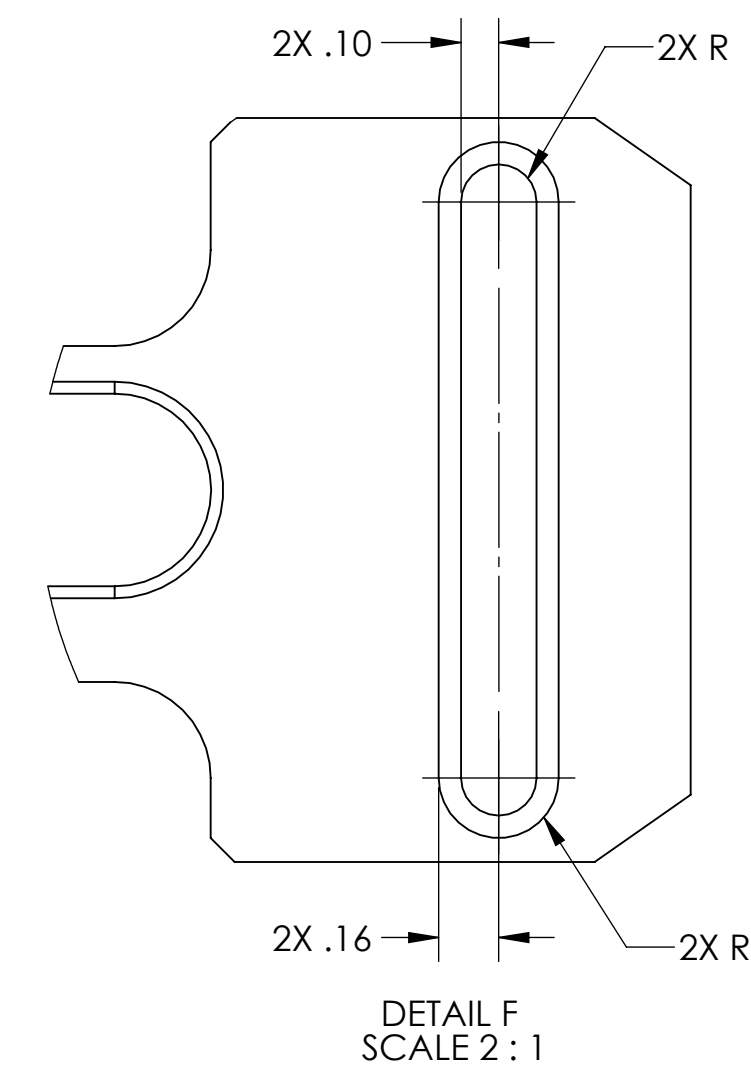


-101 DETAIL

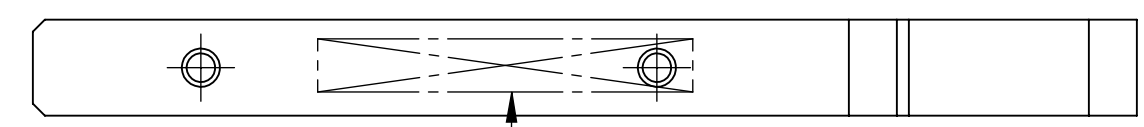
-102 DETAIL



DETAIL D  
SCALE 2:1



DETAIL F  
SCALE 2:1



IDENTIFY W/  
ASSY PART NO.

ITEM NO.	PART NUMBER	DESCRIPTION	MATERIAL	D1200486-1/REQ	D1200486-2/QTY.
4	94981A120 MCMAS-TER-CARR	RETAINING RING, 1/8 SHAFT, TYPE E, SIDE MT.	304, 316 OR 302 SSSL	2	2
3	D1200491	ALIGO, COC, ETM /ITM FC SPRAY GUARD ASSY., SCREW, SHC, 8-32 X .75 LG., GROOVED	300 SSSL	2	2
2	D1200486-102	ALIGO, COC, ETM /ITM FC SPRAY GUARD ASSY., LH SLIDE	MAKE FROM: BLANK	-	1
1	D1200486-101	ALIGO, COC, ETM /ITM FC SPRAY GUARD ASSY., RH SLIDE	MAKE FROM: BLANK	1	-

**NOTES AND TOLERANCES: (UNLESS OTHERWISE SPECIFIED)**

1. INTERPRET DRAWING PER ASME Y14.5-1994.
2. REMOVE ALL SHARP EDGES, .005-.015. FOR MACHINED PARTS. ROUND ALL EDGES APPROXIMATELY R.02 FOR SHEET METAL PARTS.
3. DO NOT SCALE FROM DRAWING.
4. ALL MACHINING FLUIDS MUST BE FULLY SYNTHETIC, FULLY WATER SOLUBLE AND FREE OF SULFUR, SILICONE, AND CHLORINE.

DIMENSIONS ARE IN INCHES  
TOLERANCES:  
.XX ± .01  
.XXX ± .005  
ANGULAR ± 0.5°

**MATERIAL** SEE PARTS LIST      **FINISH** 63 μinch

**SYSTEM** ADVANCED LIGO      **SUB-SYSTEM** COC      **NEXT ASSY** D1200490

**PART NAME** ALIGO, COC, ETM /ITM FC SPRAY GUARD, SLIDE ASSY.

<b>DESIGNER</b>	E.SANCHEZ	<b>DATE</b>	16 MAR 2012	<b>SIZE</b>	DWG. NO.	<b>REV.</b>
<b>DRAFTER</b>	E.SANCHEZ	<b>DATE</b>	23 MAR 2012	<b>SCALE</b>	D1200486	v2
<b>CHECKER</b>	SEE DCC	<b>DATE</b>	SEE DCC	<b>PROJECTION</b>		
<b>APPROVAL</b>	SEE DCC	<b>DATE</b>	SEE DCC	<b>SCALE</b>	1:1	<b>SHEET</b> 1 OF 1

D1200486-ALIGO, COC, ETM /ITM FC SPRAY GUARD ASSY., SIDE ASSY., PART FROM REV: X012, DRAWING FROM REV: X006