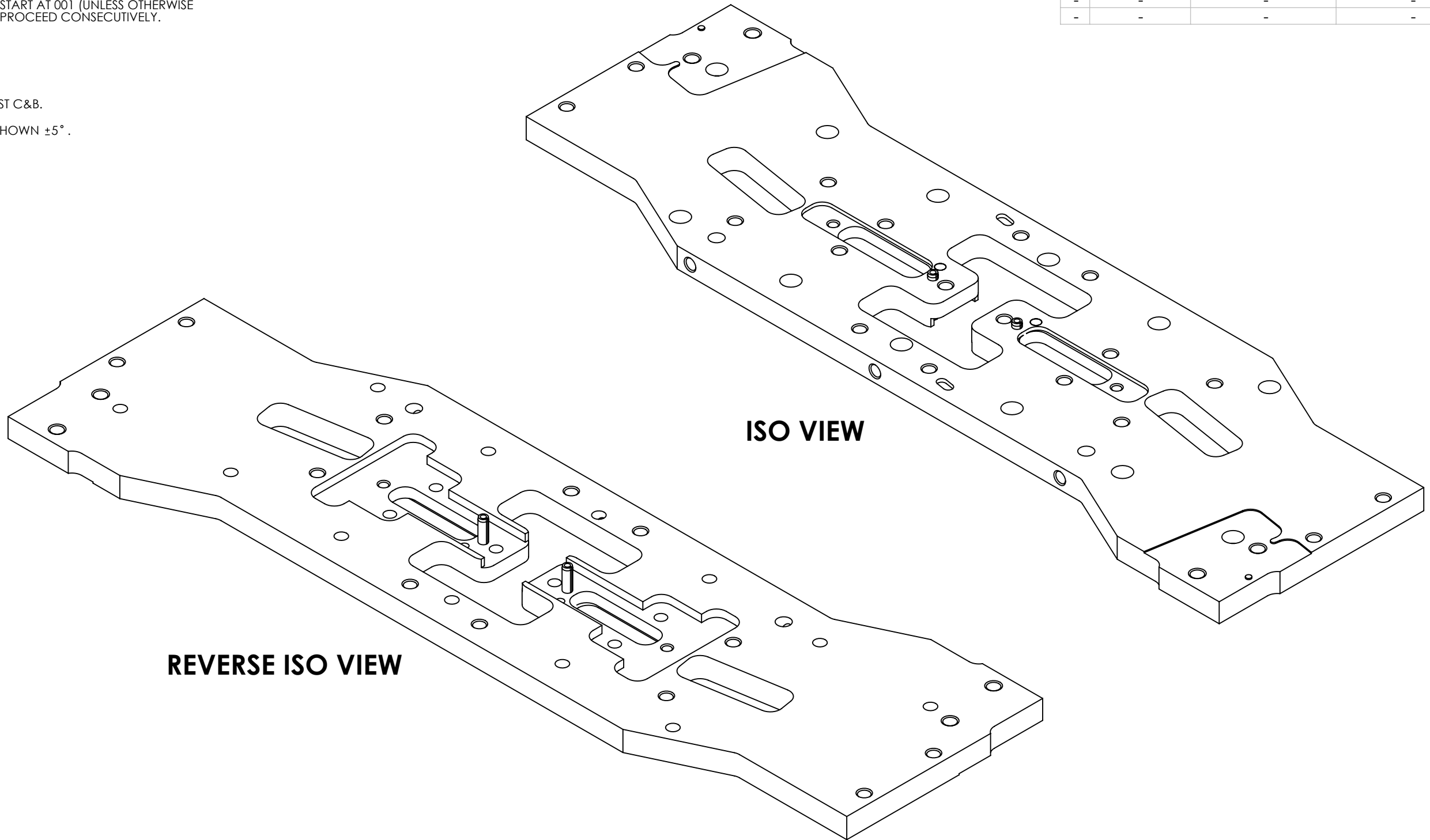


NOTES CONTINUED:

- 5. BAG AND TAG PARTS SEPARATELY WITH THEIR DRAWING PART NUMBER, REVISION, AND SERIAL NUMBER. SERIAL NUMBERS START AT 001 (UNLESS OTHERWISE SPECIFIED) FOR THE FIRST ARTICLE AND PROCEED CONSECUTIVELY.
EXAMPLE:
D1200469-v1
S/N-001
- 6. MASS: 5.394 LB [11.891 KG].
- ⑦ PRESS INSTALL ITEMS ② AS SHOWN, POST C&B.
- ⑧ SLOTS IN ITEMS ② TO BE ORIENTED AS SHOWN $\pm 5^\circ$.

REV.	DATE	DCN #	DRAWING TREE #
v1	11 APR 2012	E1101214	-
-	-	-	-
-	-	-	-



⑦	2	MS16562-238		SLOTTED SPRING PIN, 3/16 SIZE, 1"L	416 SSTL	2	4	6
	1	D1101512	v1	aLIGO TMS UPPER MASS BOTTOM PLATE	304 SSTL	1	-	1
ITEM NO.	Number	Rev.	DESCRIPTION		MATERIAL	REQ	SPARE	TOTAL

PARTS LIST

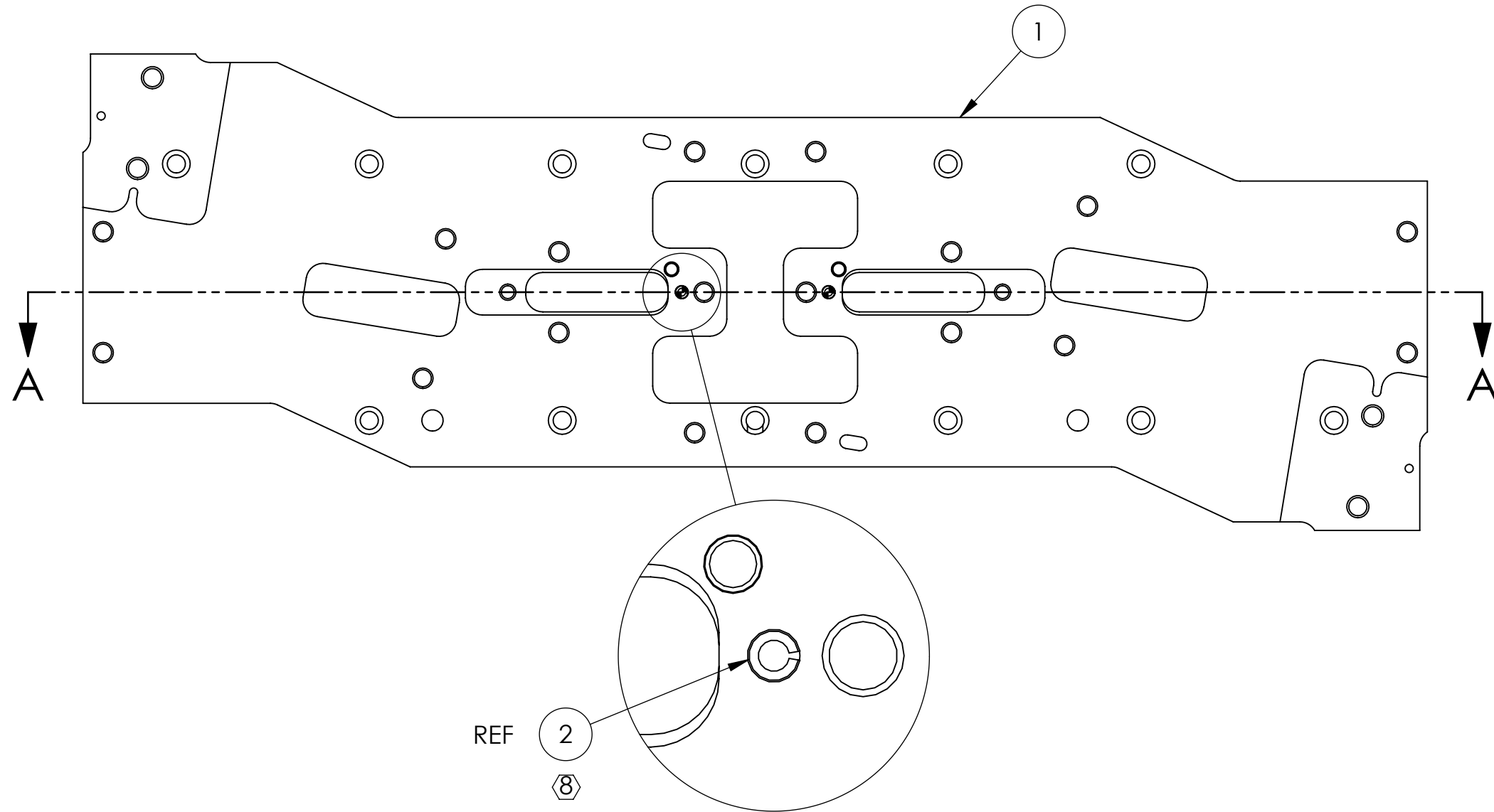
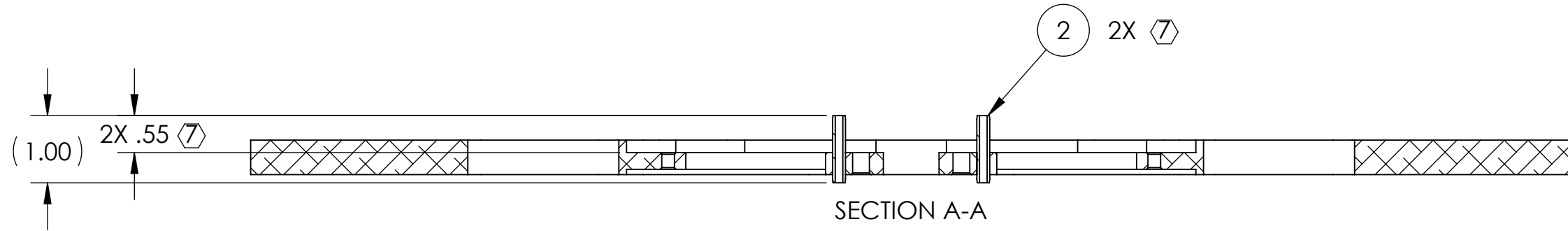
<p>NOTES AND TOLERANCES: (UNLESS OTHERWISE SPECIFIED)</p> <p>DIMENSIONS ARE IN INCHES</p> <p>TOLERANCES: .XX $\pm .01$.XXX $\pm .005$ ANGULAR $\pm 0.1^\circ$</p>				<p>1. INTERPRET DRAWING PER ASME Y14.5-1994. 2. REMOVE ALL SHARP EDGES, .005-.015. 3. DO NOT SCALE FROM DRAWING. 4. ALL MACHINING FLUIDS MUST BE FULLY SYNTHETIC, FULLY WATER SOLUBLE AND FREE OF SULFUR, SILICONE, AND CHLORINE.</p>				<p>LIGO CALIFORNIA INSTITUTE OF TECHNOLOGY MASSACHUSETTS INSTITUTE OF TECHNOLOGY</p>		<p>PART NAME aLIGO TMS UPPER MASS BOTTOM PLATE ASSEMBLY</p>	
<p>MATERIAL N/A</p>		<p>FINISH N/A μinch</p>		<p>SYSTEM ADVANCED LIGO</p>		<p>SUB-SYSTEM AOS</p>		<p>DESIGNER K. MAILAND</p>			
<p>DATE 11 APR 2012</p>		<p>REV. v1</p>		<p>SIZE B</p>		<p>DWG. NO. D1200469</p>		<p>REV. v1</p>			
<p>APPROVAL SEE DCN</p>		<p>CHECKER SEE DCN</p>		<p>SCALE NONE</p>		<p>PROJECTION FIRST ANGLE</p>		<p>SHEET 1 OF 2</p>			

D1200469 aLIGO TMS Upper Mass Bottom Plate Assembly, PART PDM REV: X-017, DRAWING PDM REV: X-013

D1200469 aLIGO TMS Upper Mass Bottom Plate Assembly, PART PDM REV: X-017, DRAWING PDM REV: X-013

8 7 6 5 4 3 2 1

D
C
B
A



LIGO CALIFORNIA INSTITUTE OF TECHNOLOGY
MASSACHUSETTS INSTITUTE OF TECHNOLOGY

SIZE	DWG. NO.	REV.
B	D1200469	v1
SCALE: NONE		PROJECTION:
		SHEET 2 OF 2

8 7 6 5 4 3 2 1