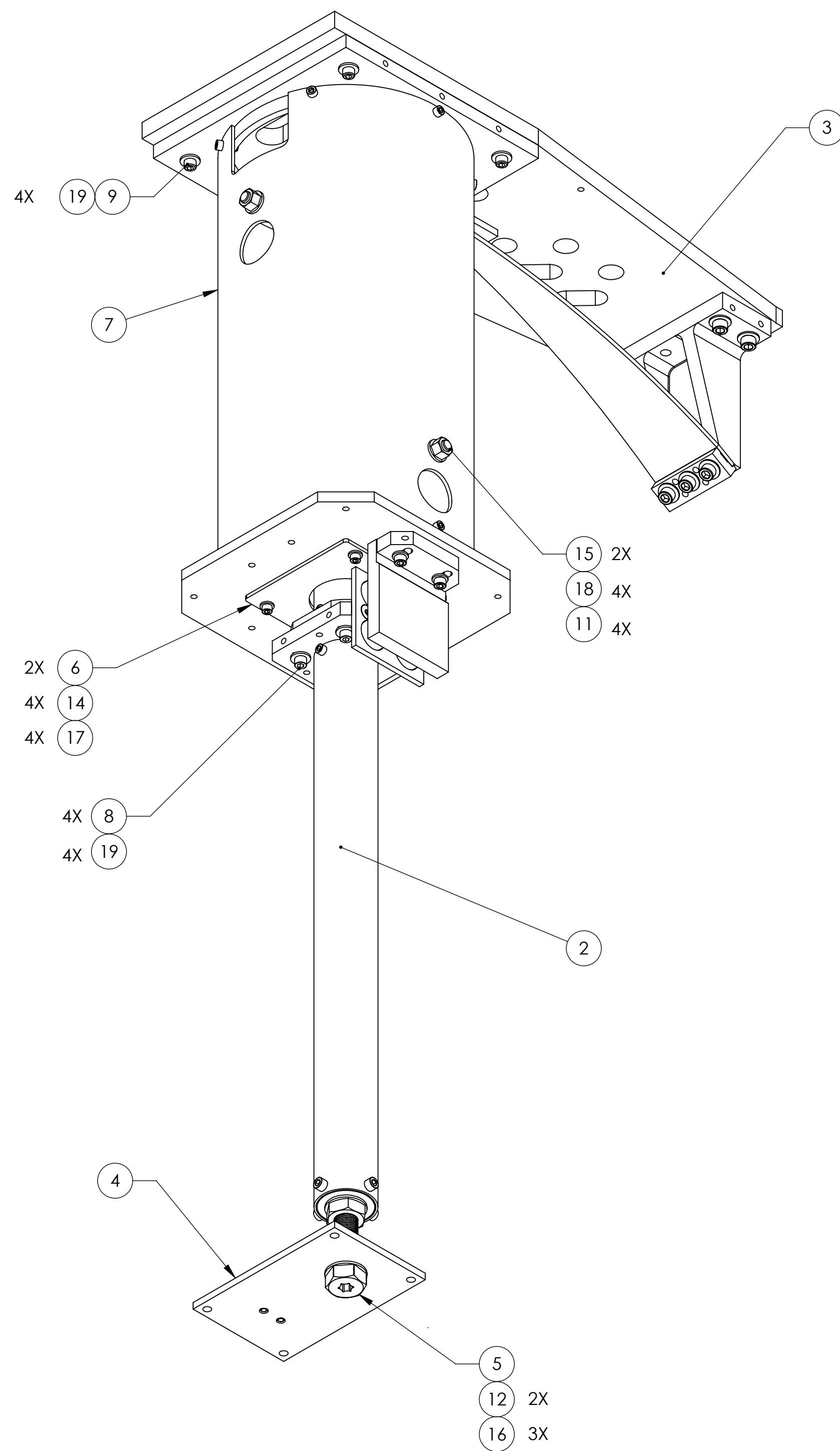


NOTES CONTINUED:

5. APPROXIMATE WEIGHT = 54.752 LBS.



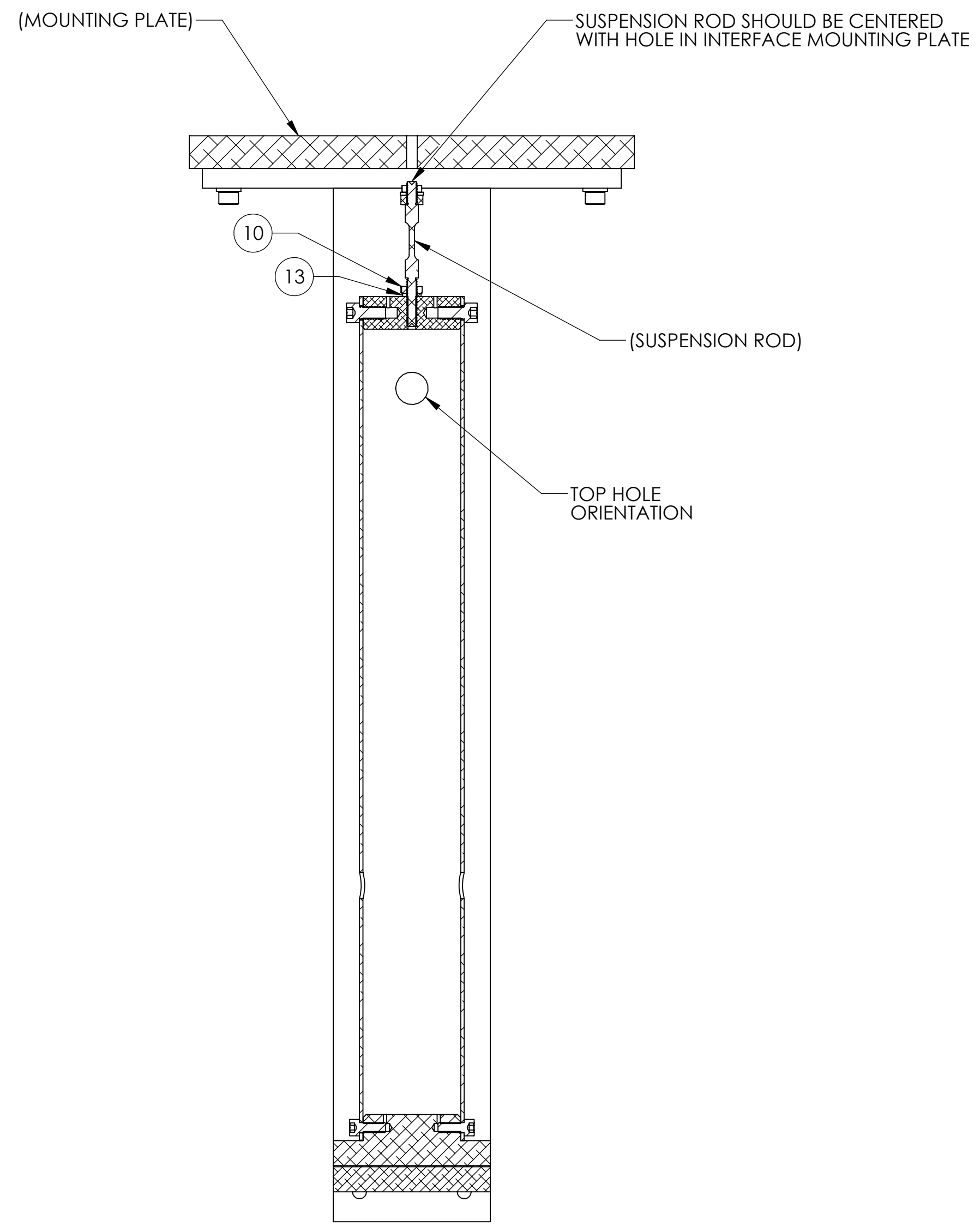
REV.	DATE	DCN #	DRAWING TREE #
v1	04 OCT 2011	E1101007	E1101041
-	-	-	-
-	-	-	-

ITEM NO.	PART NUMBER	DESCRIPTION	MATERIAL	QTY
19	98019A355	WASHER FLAT, 1/4" MIL-15795-810	300 SSSL	8
18	98370A019	WASHER #.375 X .75 OD, MCMMASTER	18-8 SSSL	4
17	98019A330	WASHER #10, NASM 15795-808	300 SSSL	4
16	98017A220	WASHER #3/4, MCMMASTER	300 SSSL	3
15	95412A651	THREADED STUD .375-16 X 9, MCMMASTER	18-8 SSSL	2
14	92200A242	SOCKET HEAD SCREW, #10-24 X .50 LG (MS16995-36)	300 SSSL	4
13	90945A741	WASHER, FLAT, #10 (NAS 620-C10 OR EQUIVALENT)	300 SSSL	1
12	90810A036	MCMMASTER, NICKEL COPPER HEX NUT, 3/4-10	NICKEL-COPPER ALLOY 400	2
11	N-3816-A	HEX NUT, .375-16	Ag-PLATED 300 SSSL	4
10	N-1024-A	UC-COMP, HEX NUT, #10-24, SSSL	Ag-PLATED 300 SSSL	1
9	C-2016-NA	SOCKET HEAD CAP SCREW, .25-20 X 1 LG	Ag-PLATED 300 SSSL	4
8	C-2016-N	SCREW SHCS, 1/4-20 X 1" LG	18-8 SSSL	4
7	D1002564	SLC EDDY CURRENT DAMPING 8 DIA TUBE ASSY	N/A	1
6	D1001120	SLC EARTHQUAKE STOP RING	6061-T6 Al	2
5	D1001186	SCREW HEX HD # 3/4-10 X 4.0 MODIFIED	18-8 SSSL	1
4	D1200338	αLIGO ITM ELLIPTICAL BAFFLE TOP MTG PLATE	6061-T6 Al	1
3	D1101886	αLIGO AOS ITM ELLIPTICAL BAFFLE BLADE ASSY, BSC4 H2	N/A	1
2	D1101887	αLIGO AOS ITM ELLIPTICAL BAFFLE TUBE LO ASSY	N/A	1
1	D1002582	SLC BAFFLE TUBE UP ASSEMBLY	N/A	1

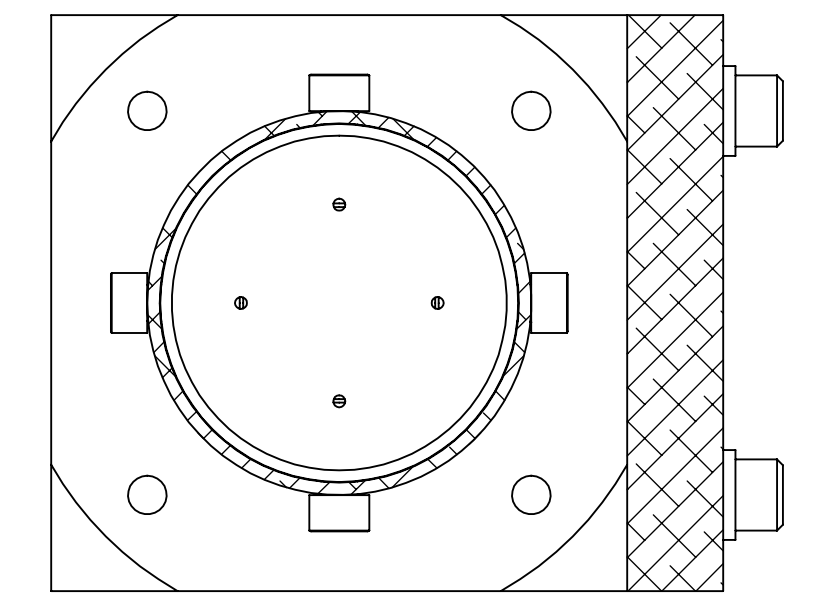
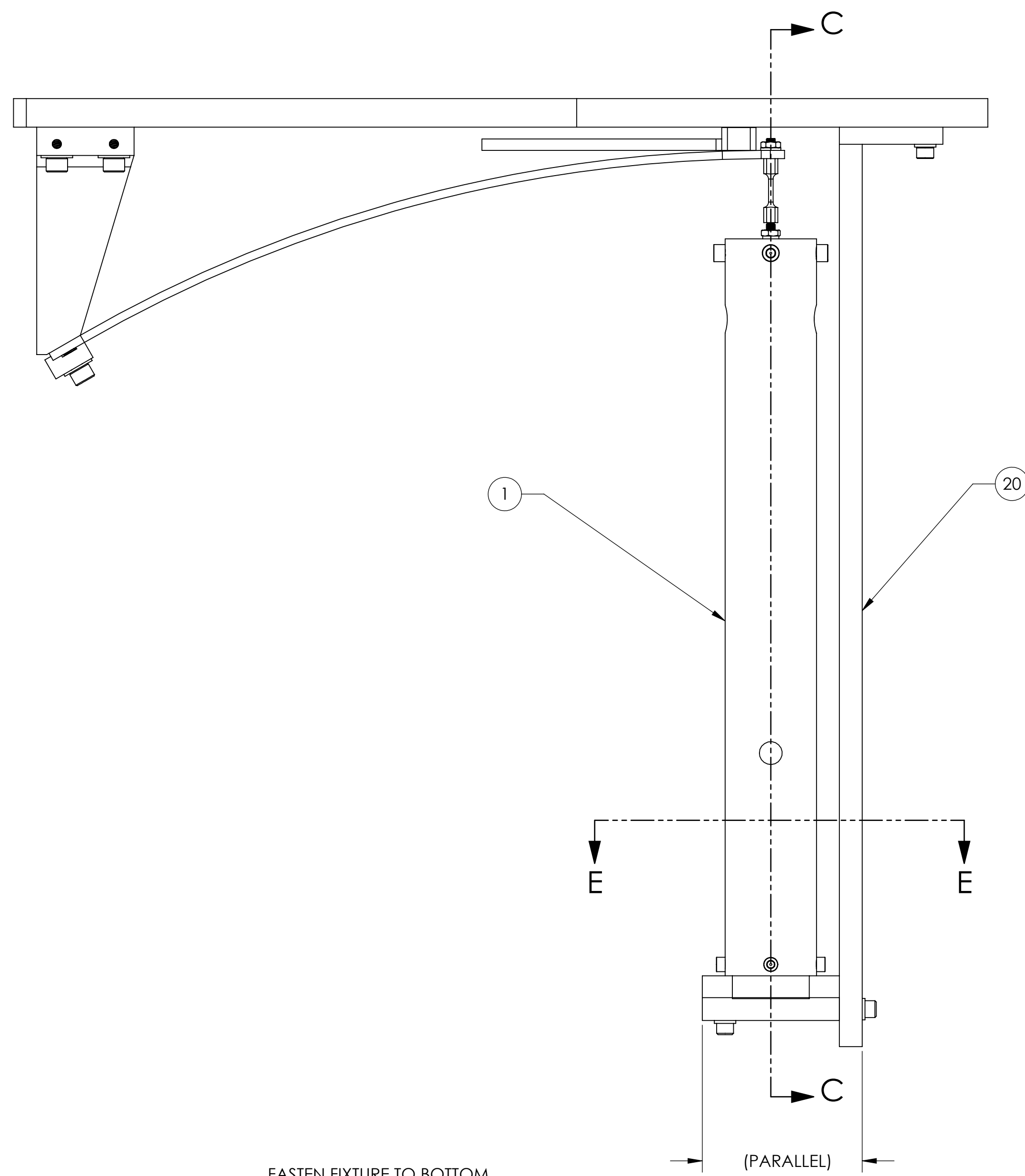
PARTS LIST

<p>NOTES AND TOLERANCES: (UNLESS OTHERWISE SPECIFIED)</p> <p>1. INTERPRET DRAWING PER ASME Y14.5-1994. 2. REMOVE ALL SHARP EDGES, .005-.015, FOR MACHINED PARTS. ROUND ALL EDGES APPROXIMATELY R.02 FOR SHEET METAL PARTS. 3. DO NOT SCALE FROM DRAWING. 4. ALL MACHINING FLUIDS MUST BE FULLY SYNTHETIC, FULLY WATER SOLUBLE AND FREE OF SULFUR, SILICONE, AND CHLORINE.</p>		<p>LIGO CALIFORNIA INSTITUTE OF TECHNOLOGY MASSACHUSETTS INSTITUTE OF TECHNOLOGY</p>		<p>PART NAME αLIGO AOS ITM ELLIPTICAL BAFFLE SUSPENSION ASSY, H2</p>	
<p>DIMENSIONS ARE IN INCHES</p> <p>TOLERANCES: .XX ± .02 .XXX ± .005</p> <p>ANGULAR ± 1.0°</p>		<p>SYSTEM ADVANCED LIGO</p>		<p>SUB-SYSTEM AOS</p>	
<p>MATERIAL N/A</p>		<p>FINISH N/A μinch</p>		<p>NEXT ASSY D1200456</p>	
		<p>DESIGNER H. KELMAN</p>		<p>DATE 14/02/2012</p>	
		<p>DRAFTER J. TERRAZAS</p>		<p>SIZE D</p>	
		<p>CHECKER H. KELMAN</p>		<p>DWG. NO. D1200455</p>	
		<p>APPROVAL M. SMITH</p>		<p>REV. v1</p>	
		<p>SCALE: 1:12</p>		<p>PROJECTION: </p>	
		<p>SHEET 1 OF 3</p>			

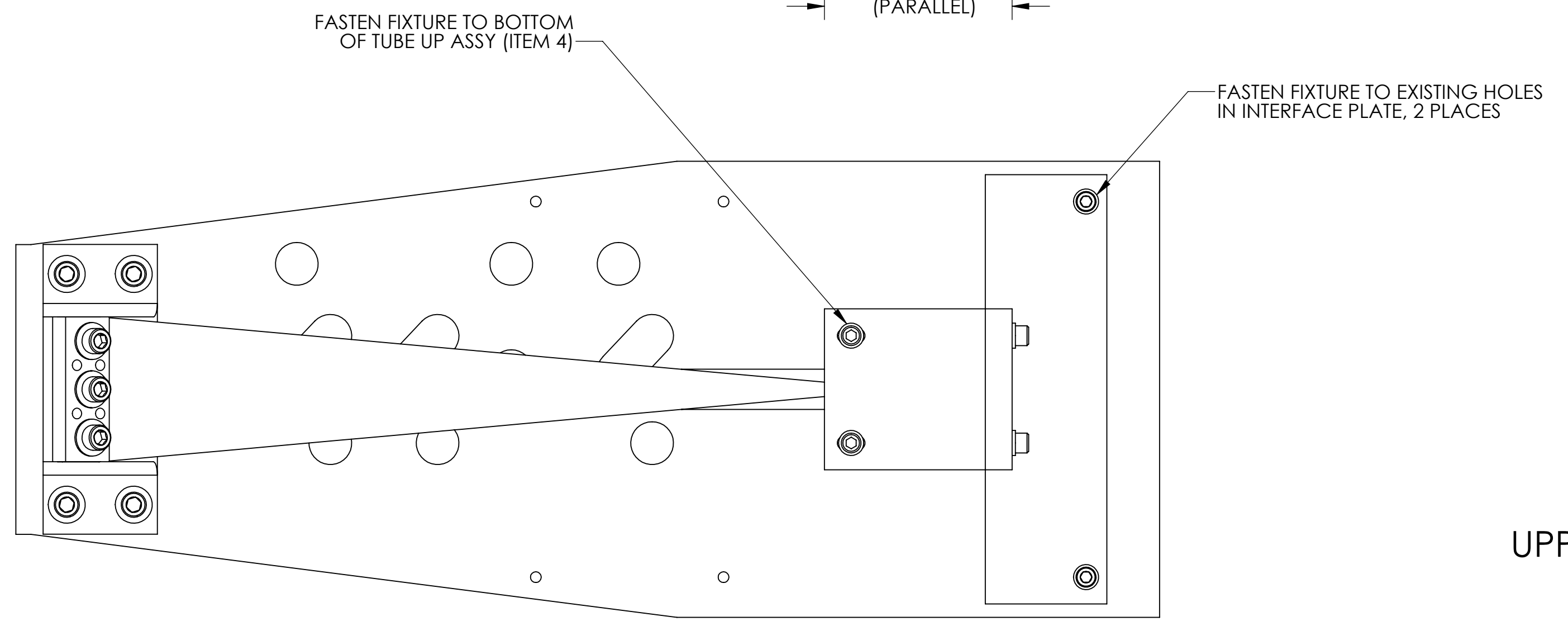
D1200455 αLIGO AOS ITM ELLIPTICAL BAFFLE SUSPENSION ASSY, H2 PART PDM REV: X-005 DRAWING PDM REV: X-002



SECTION C-C
SCALE 1 : 4



SECTION E-E
SCALE 1 : 1



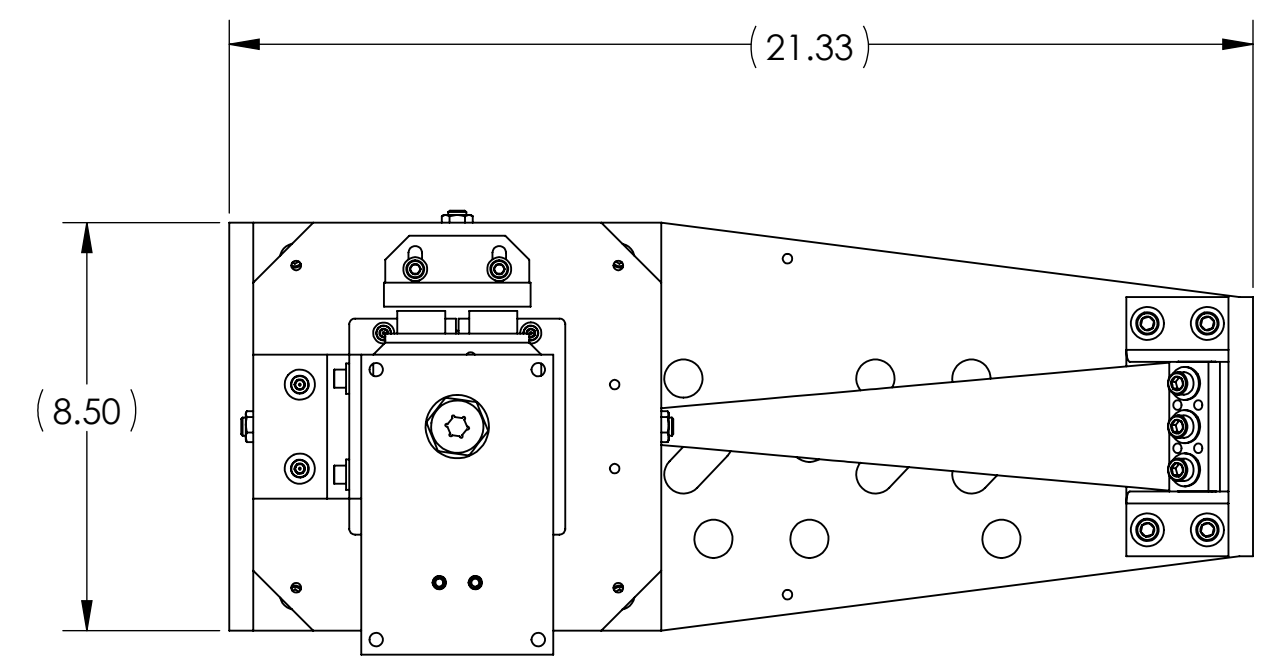
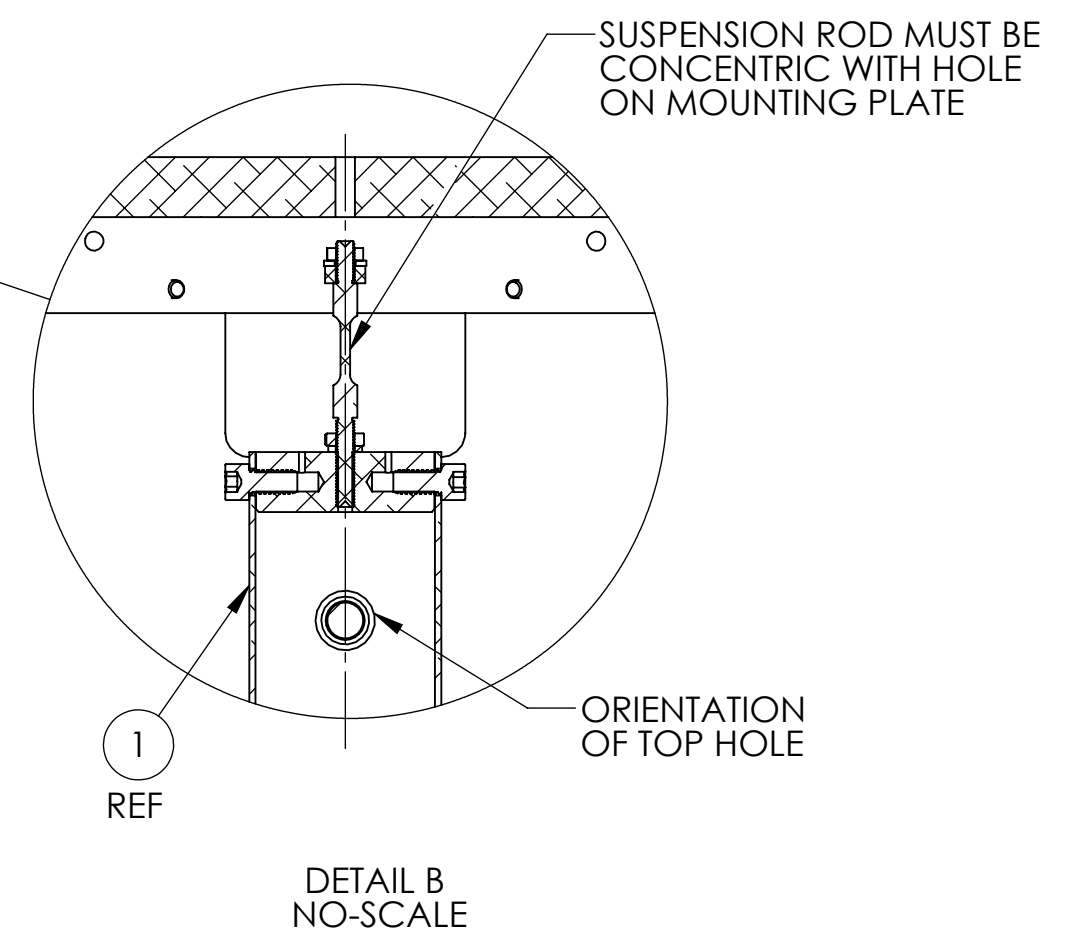
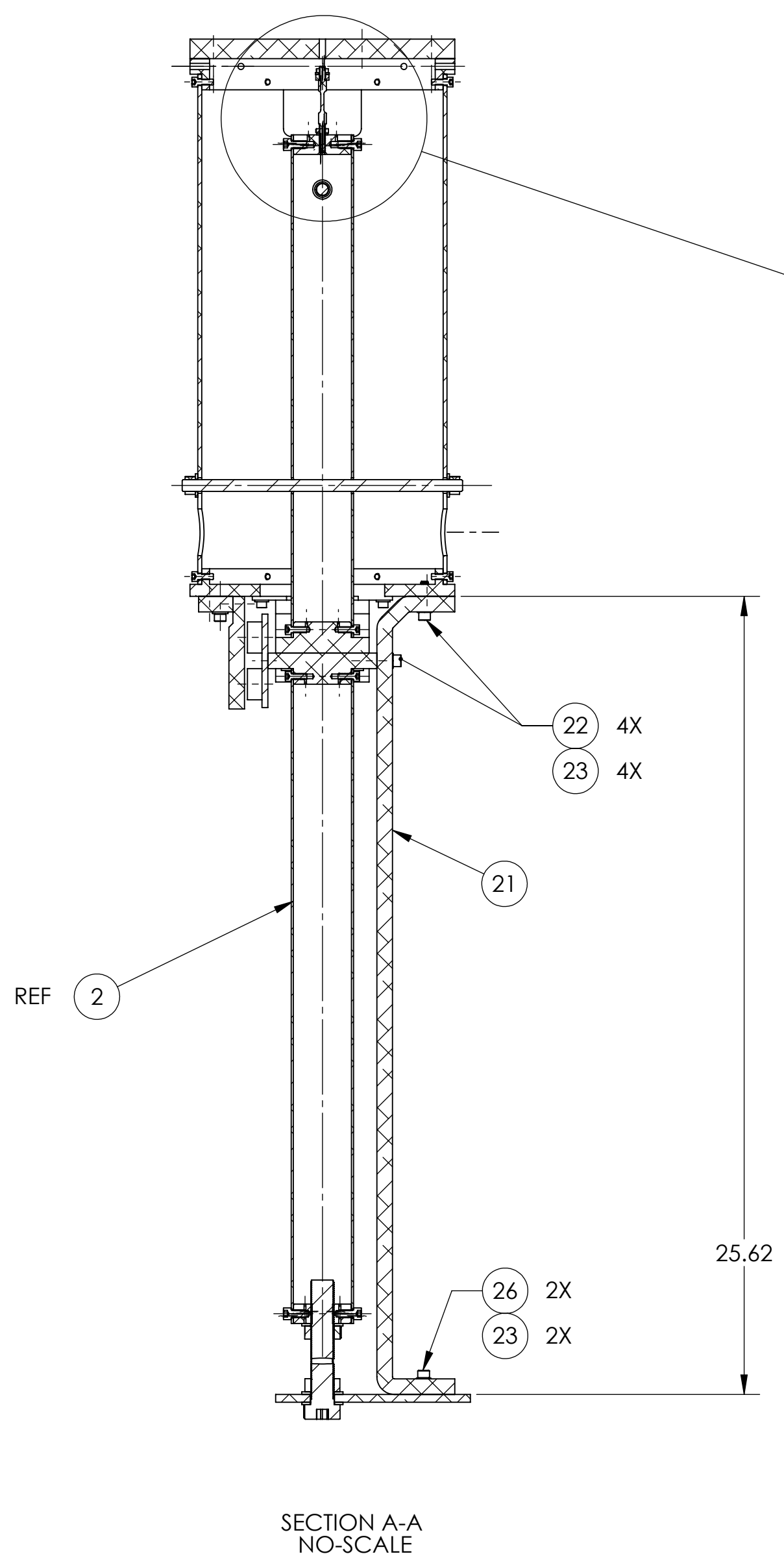
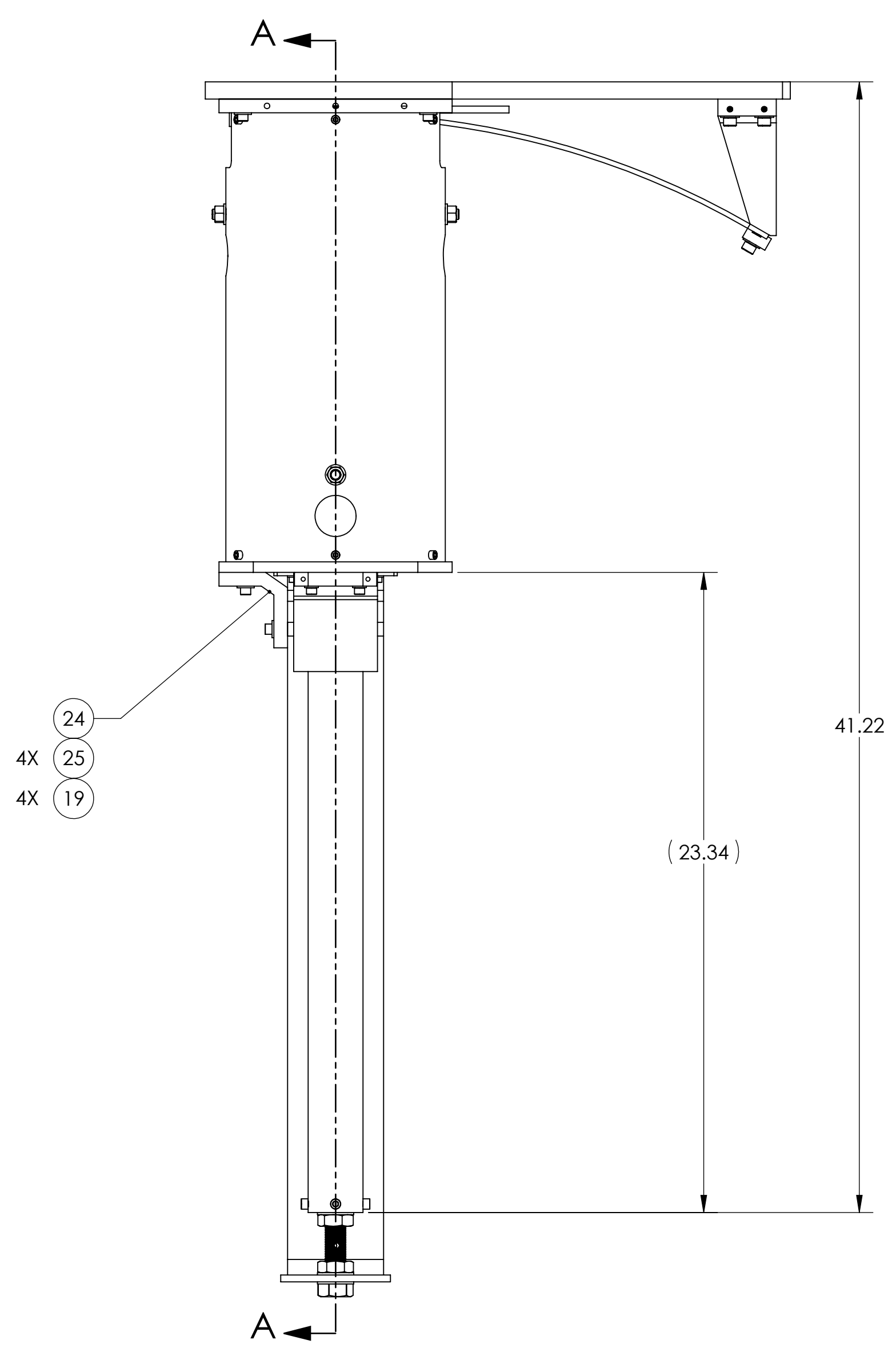
UPPER TUBE ALIGNMENT TOOLING

CALIFORNIA INSTITUTE OF TECHNOLOGY MASSACHUSETTS INSTITUTE OF TECHNOLOGY		REV.
SIZE	DWG. NO.	v1
D	D1200455	
SCALE: 1:12	PROJECTION:	SHEET 2 OF 3

D1200455_0100_005_0101_ELLIPTICAL_BAFFLE_SUSPENSION_ASSY_H2_P001_PDM_REV_X-005_DRAWING_PDM_REV_X-002

8 7 6 5 4 3 2 1

H
G
F
E
D
C
B
A



(SHOWN ON SHT 2)

26	MS 16995-50	SOCKET HEAD CAP SCREW, 1/4-20 X .75 LG	18-8 SSTL	2
25	92200A541	SHCS, .25-20 x .88, 300 SSTL, MS16995-51	300 SSTL	4
24	D1101285	TRANSPORT, LOCKING, ACB	6061-T6 Al	1
23	NAS 620-C416L	1/4 FLAT WASHER, .260 ID x .47 OD X .02 THK	300 SSTL	6
22	92200A542	Screw, Socket Head Cap, 1/4-20 UNC-2A x 1.00 lg.	300 SSTL	4
21	D1102286	ALIGO AOS ITM ELLIPTICAL BAFFLE HEIGHT ADJUSTOR BRACE	6061-T6 Al	1
20	D1101288	ALIGNMENT FIXTURE, TUBE UP ASSEMBLY	N/A	1
19	98019A355	WASHER FLAT, 1/4" MIL-15795-810	300 SSTL	4
ITEM NO.	PART NUMBER	DESCRIPTION	MATERIAL	QTY
TOOLING PARTS LIST				

LOWER TUBE LENGTH/
ALIGNMENT TOOLING

LIGO CALIFORNIA INSTITUTE OF TECHNOLOGY
MASSACHUSETTS INSTITUTE OF TECHNOLOGY

SIZE DWG. NO. **D1200455** REV. **v1**

SCALE: 1:12 PROJECTION: SHEET 3 OF 3

D1200455-ALIGO-AOS-ITM-ELLIPTICAL-BAFFLE-SUSPENSION-ASSY-HZ-PART-PDM-REV-X-005-DRAWING-PDM-REV-X-002

8 7 6 5 4 3 2 1