

8 7 6 5 4 3 2 1

NOTES CONTINUED:

⑤ SCRIBE, ENGRAVE (A VIBRATORY TOOL MAY BE USED), LASER MARK OR MECHANICALLY STAMP (NO INKS OR DYES) DRAWING PART NUMBER, REVISION (AND VARIANT OR "TYPE" IF APPLICABLE) ON NOTED SURFACE OF PART FOLLOWED ON THE NEXT LINE WITH A THREE DIGIT SERIAL NUMBER. SERIAL NUMBERS START AT 001 FOR THE FIRST ARTICLE AND PROCEED CONSECUTIVELY. USE MINIMUM 0.12" HIGH CHARACTERS, UNLESS THE SIZE OF THE PART DICTATES SMALLER CHARACTERS. EXAMPLE: DXXXXXX-VY, TYPE-XX, S/N XXX

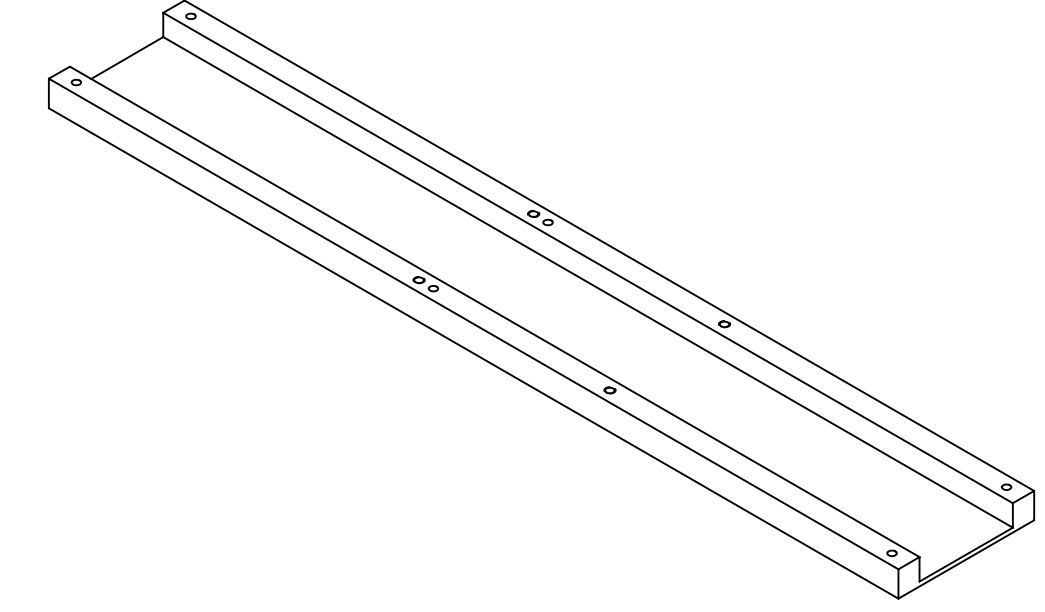
6. APPROXIMATE WEIGHT = 3.10 LB.

7. MACHINE ALL SURFACES TO REMOVE OXIDES AND MILL FINISH. USE OF ABRASIVE REMOVAL TECHNIQUES IS NOT ALLOWED. REFER TO LIGO-E0900364

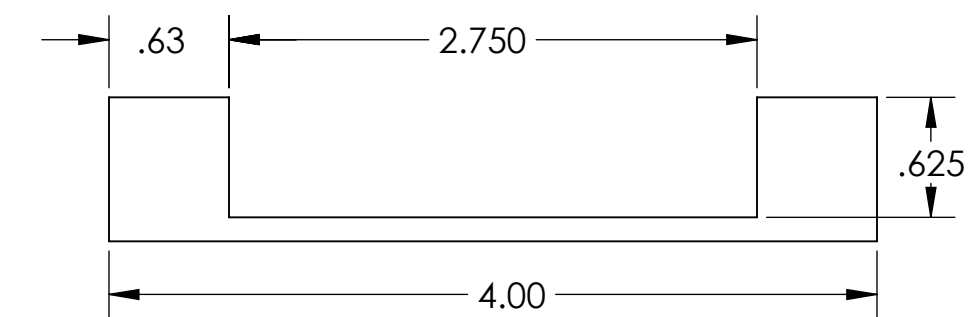
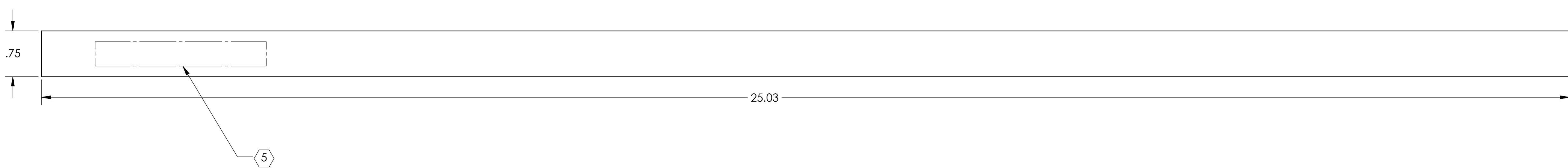
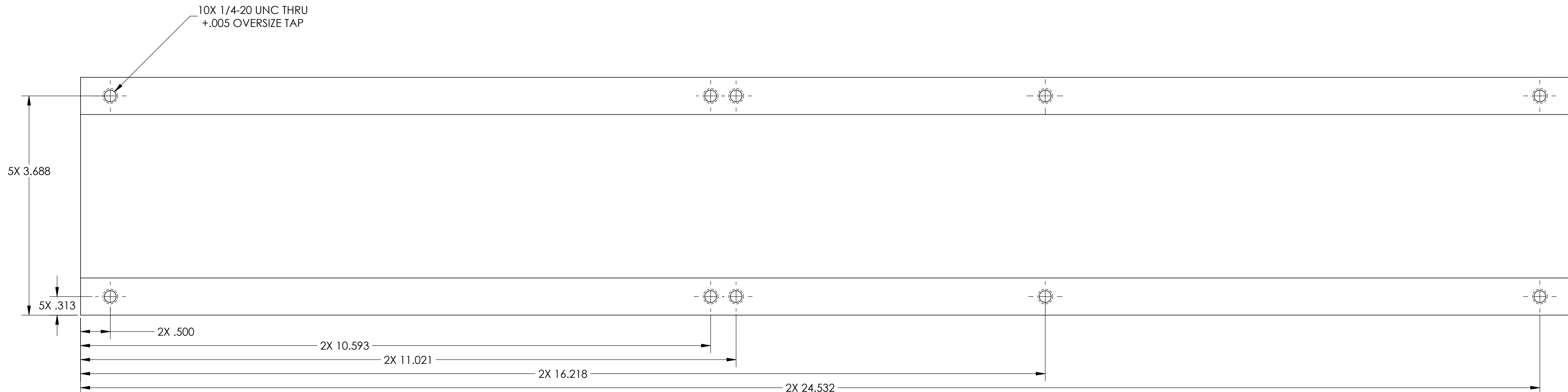
8. ALL PARTS SHALL BE MANUFACTURED IN ACCORDANCE WITH LIGO SPECIFICATION E0900364.

9. ALL MATERIAL IS TO BE VIRGIN MATERIAL (I.E. NO WELD REPAIRS, FLUGS OR RECYCLED MATERIAL). NO REPAIRS SHALL BE MADE UNLESS APPROVED IN ADVANCE, AND IN WRITING, BY LIGO LABORATORY. REFER TO LIGO-E0900364.

REV.	DATE	DCN #	DRAWING TREE #
v1	26 APR 2012	E1101007-v1	



GENERAL VIEW
FOR REFERENCE ONLY
NO SCALE



NOTES AND TOLERANCES: (UNLESS OTHERWISE SPECIFIED)		LIGO CALIFORNIA INSTITUTE OF TECHNOLOGY MASSACHUSETTS INSTITUTE OF TECHNOLOGY		PART NAME	
DIMENSIONS ARE IN INCHES		ADVANCED LIGO		aLIGO ITM ELLIPTICAL BAFFLE TUBE MOUNT CHANNEL	
TOLERANCES: .XX ± .01 .XXX ± .005		AOS		DESIGNER	H. KELMAN
ANGULAR ± 1.0°		NEXT ASSY		DRAFTER	TQ. NGUYEN
MATERIAL	6061-T6 Al	D1101806		CHECKER	L. AUSTIN
FINISH	63 μinch			APPROVAL	M. SMITH
				SCALE	1:1
				PROJECTION	ASME
				SIZE	D
				DWG. NO.	D1200339
				REV.	v1
				SHEET 1 OF 1	

D1200339_dLIGO ITM ELLIPTICAL BAFFLE BOX TOP SUPPORT BRACKET PART.PDM REV: X.006 DRAWING.PDM REV: X.001