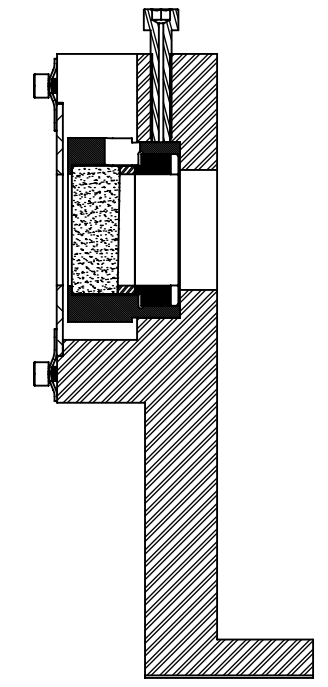
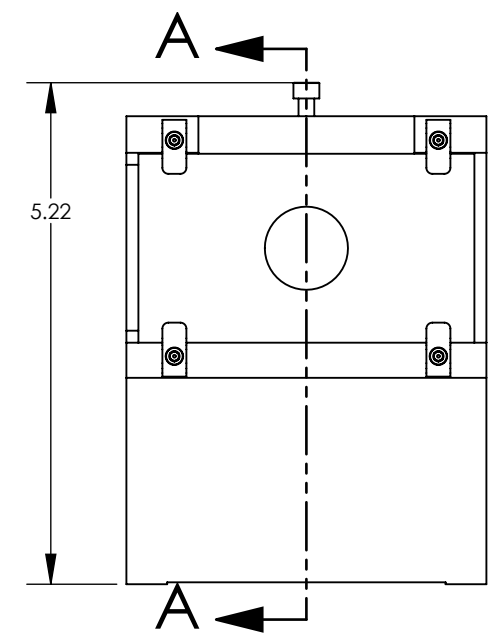
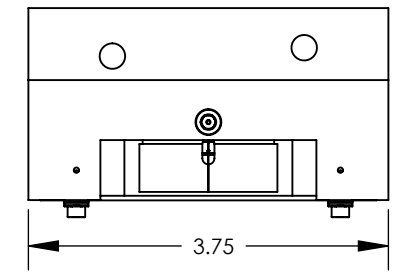
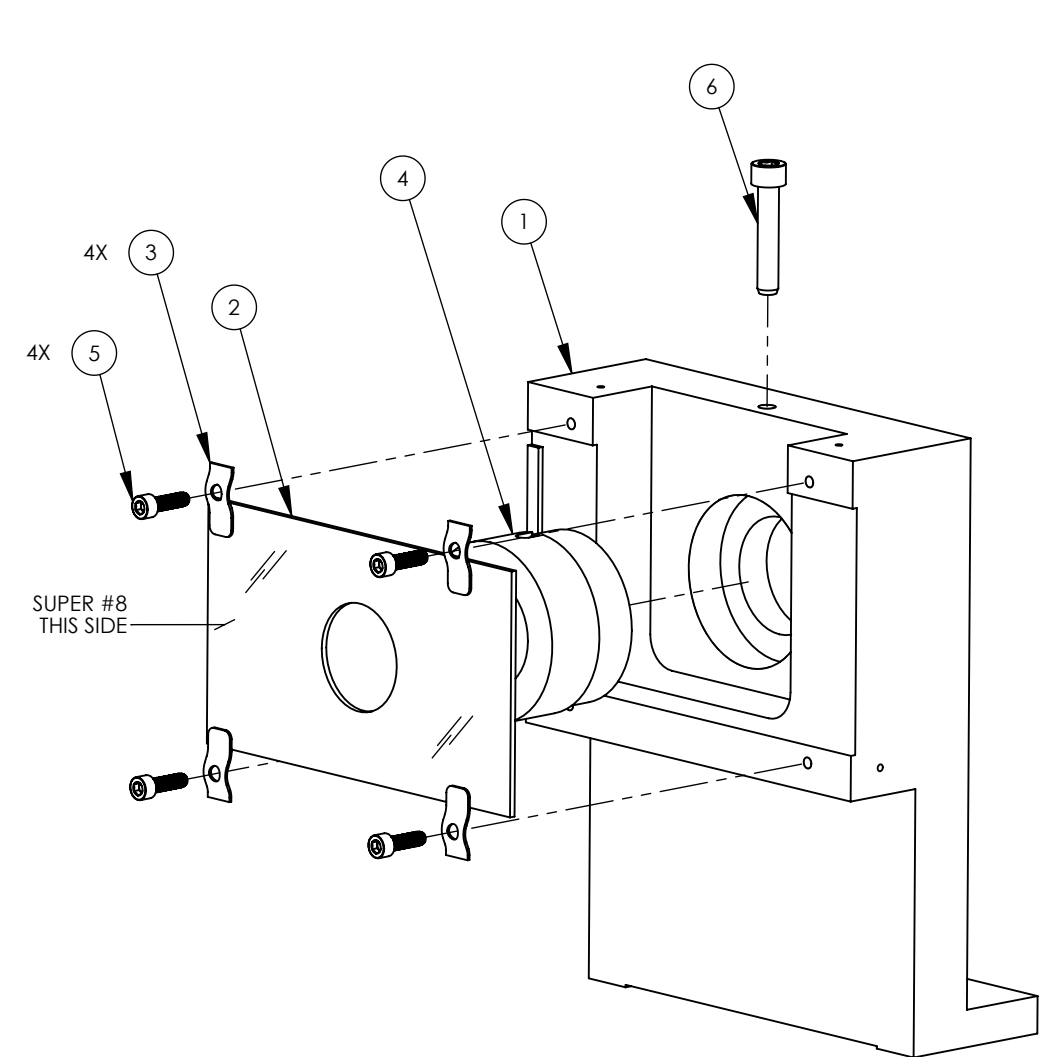


NOTES CONTINUED:
 5. APPROXIMATE WEIGHT =1.67 LB.
 6. TORQUE SHCS TO VALUES SPECIFIED IN LIGO-T1 100066.

REV.	DATE	DCN #	DRAWING TREE #
v1	18 APR 2012	E1000563	-
v3	21 SEP 2012	E1000563	-
-	-	-	-



SECTION A-A
 SCALE 1 : 1.5

ITEM NO.	PART NUMBER	DESCRIPTION	MATERIAL	REQ
6	C-814	SHCS, Vented, 8-32 X .875 LG.	18-8 SSTL	1
5	92200A108	Head Cap Screw 300 Series SS, 4-40 Thrd, 3/8" Length, MS 16995-10	18-8 SSTL	4
4	D0900359	WEDGED PRISM ASSY	N/A	1
3	D1001919	BEAM DUMP MOUNTING CLAMP	304 SSTL	4
2	D1001920	INPUT BAFFLE BEAM DUMP	18 GA A424 TYPE I STEEL	1
1	D1200198	WEDGED PRISM HOLDER STAND	6061-T6 Al	1

PARTS LIST

NOTES AND TOLERANCES: (UNLESS OTHERWISE SPECIFIED)

DIMENSIONS ARE IN INCHES
 TOLERANCES:
 .XX ± .03
 .XXX ± .010
 ANGULAR ± .5°

MATERIAL: N/A
 FINISH: N/A μinch

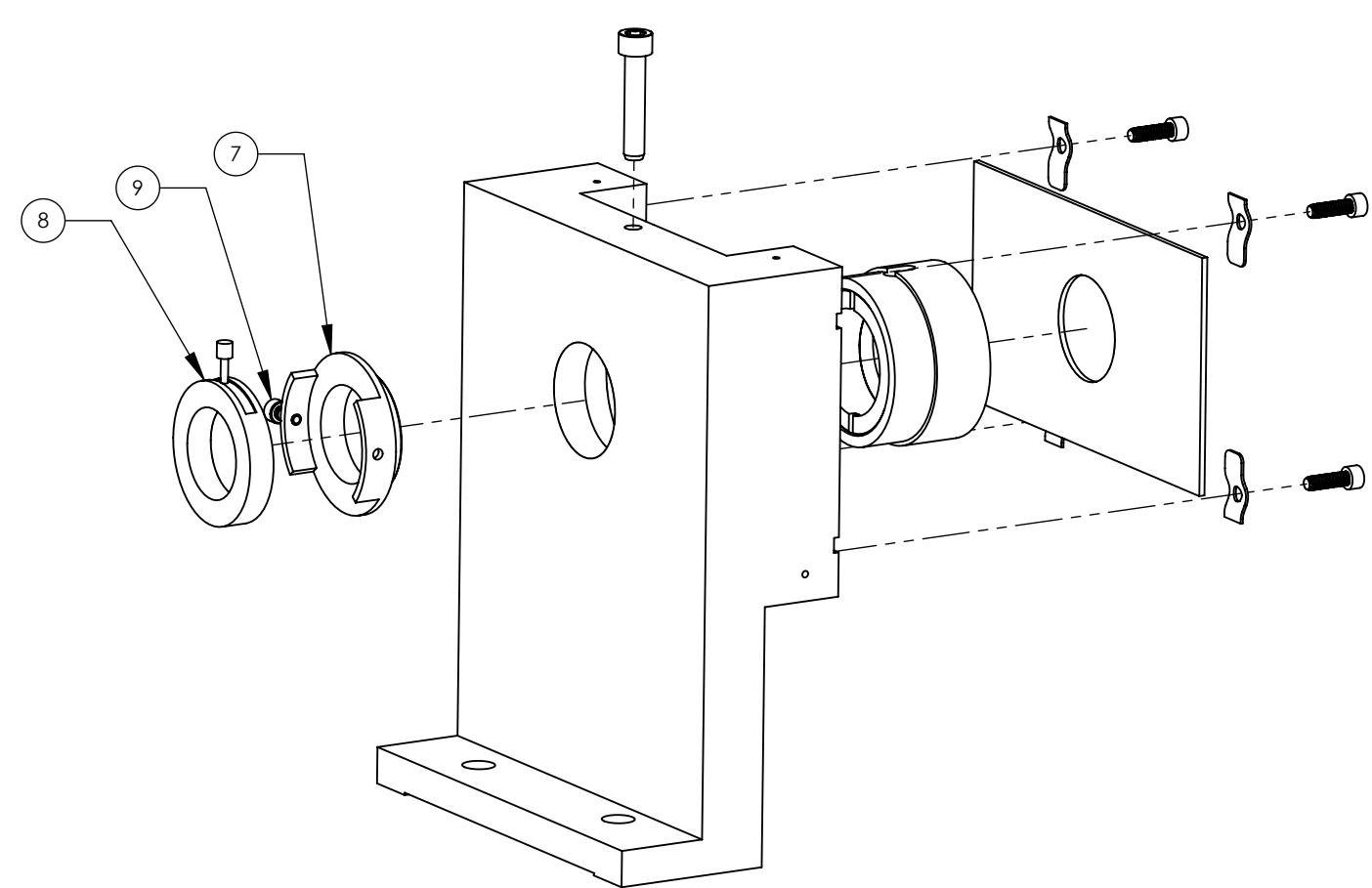
CALIFORNIA INSTITUTE OF TECHNOLOGY
 MASSACHUSETTS INSTITUTE OF TECHNOLOGY
 SYSTEM: ADVANCED LIGO
 SUB-SYSTEM: AOS
 NEXT ASSY: D0900623

PART NAME: WEDGED PRISM HOLDER ASSY
 DESIGNER: M. RUIZ
 DRAFTER: MRUIZ
 CHECKER: L. AUSTIN
 APPROVAL: M. SMITH
 DATE: 2 FEB 2012
 DATE: 18 APR 2012

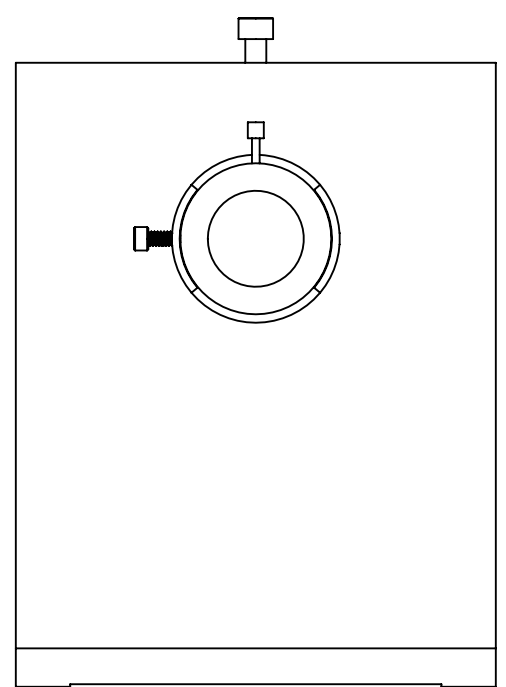
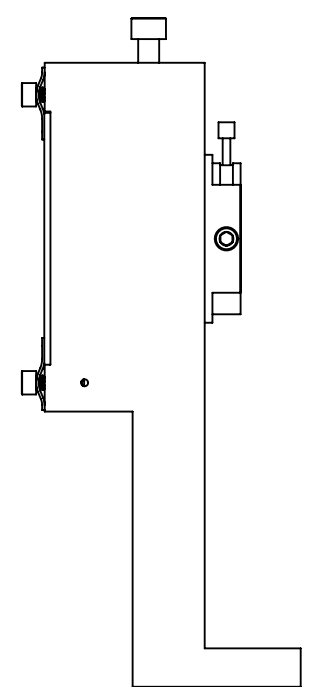
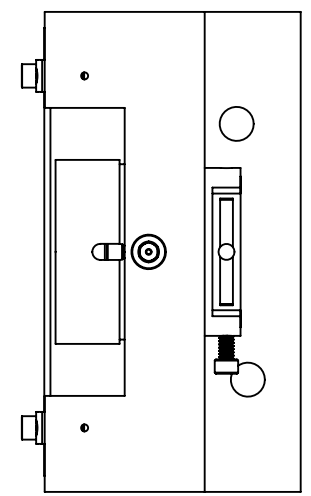
SIZE: B
 DWG. NO.: D1200197
 REV.: v3
 SCALE: 1:1
 PROJECTION: SHEET 1 OF 2

D1200197 aLIGO_AOS_Wedged Prism Holder Assy, PART PDM REV: X-026, DRAWING PDM REV: X-017

D1200197 aLIGO_AOS_Wedged Prism Holder Assy, PART PDM REV: X-026, DRAWING PDM REV: X-017



ALIGNMENT TOOLING



ITEM NO.	PART NUMBER	DESCRIPTION	MATERIAL	QTY	TOTAL
9	C-404-NA	#4-40 X 0.250", VENTED, 18-8 SSSL, SILVER PLATED	Ag-PLATED 18-8 SSSL	1	0
8	D20S	DIAPHRAGM D20S OFI	Material <not specified>	1	0
7	D1100556	IRIS DIAPHRAGM MOUNT	304, 316 OR 302 SSSL	1	0
PARTS LIST					

CALIFORNIA INSTITUTE OF TECHNOLOGY
MASSACHUSETTS INSTITUTE OF TECHNOLOGY

SIZE	DWG. NO.	REV.
B	D1200197	v3
SCALE: 2:1	PROJECTION:	SHEET 2 OF 2