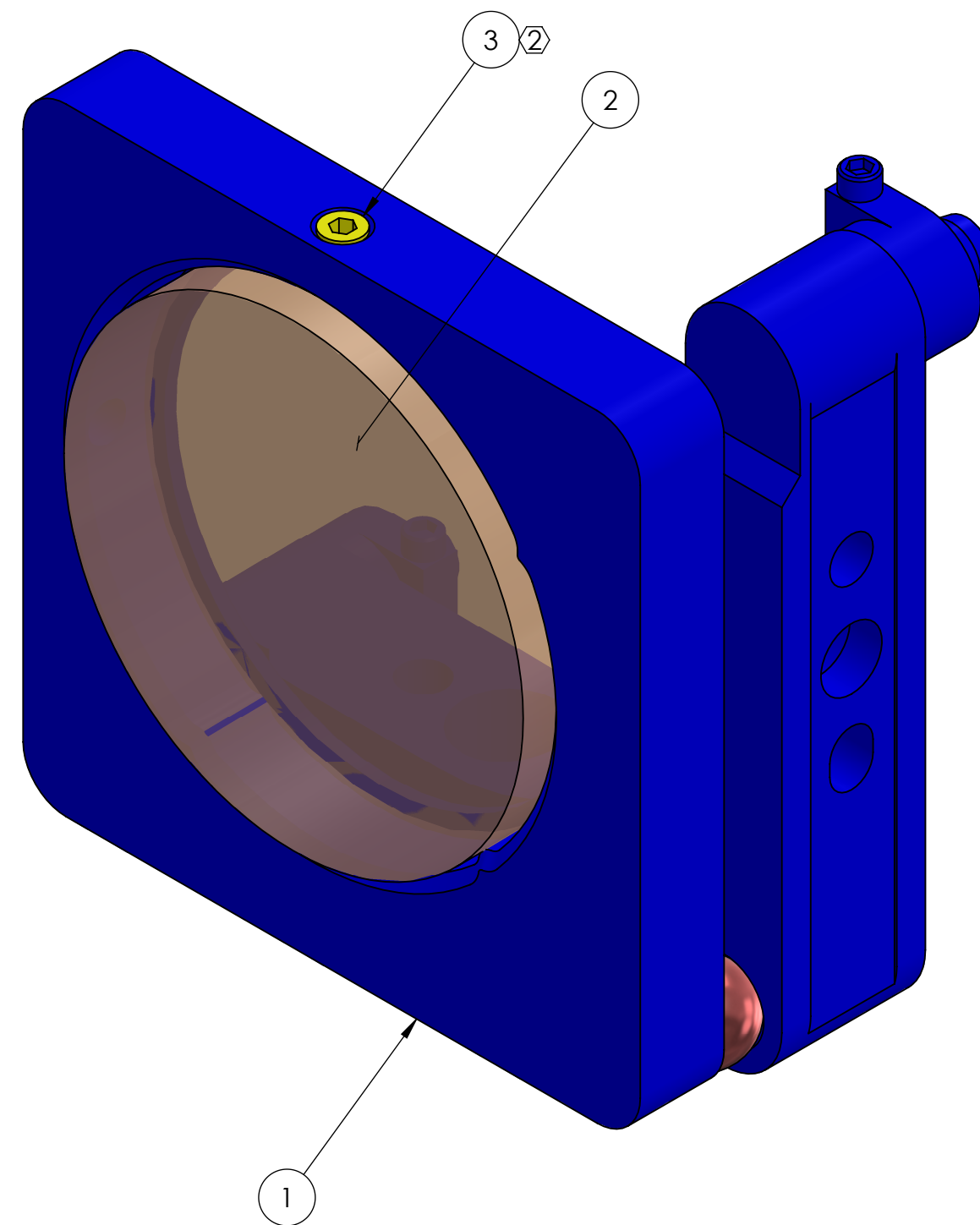


**NOTES:**  
 1. WEIGHT: .40 LB [.18 KG].  
 2. SUBSTITUTE ITEM 3 (SET SCREW) FOR THE MANUFACTURER'S INCLUDED SET SCREW OF ITEM 1 (MIRROR MOUNT).

REV.	DATE	DCN #	DRAWING TREE #
v1	23 JUL 2013	-	
v2	17 SEP 2013	E1300602-v0	
v3	15 JAN 2014	E1400017-v0	



ITEM NO.	PART NO.	DESCRIPTION	MATERIAL	QTY.
3	92778A113 (McM-Carr) or equiv	SCREW, SOCKET SET, OVAL POINT, #8-32 UNC X 0.25 LONG	18-8 SSSL	1
2	M12045-1047 (PRECISION PHOTONICS) (ITM10831)	MIRROR, 2" DIAMETER, 1047NM HR, 45 DEGREE INCIDENCE	GLASS	1
1	0004-0012 (Siskiyu) (IXM200.A2-VC)	TIP-TILT MIRROR MOUNT, 2" DIAMETER	N/A	1

NOTES AND TOLERANCES: (UNLESS OTHERWISE SPECIFIED)

DIMENSIONS ARE IN INCHES

TOLERANCES:  
 .XX ±  
 .XXX ±

ANGULAR ± °

MATERIAL

N/A

FINISH

N/A

**LIGO** CALIFORNIA INSTITUTE OF TECHNOLOGY  
 MASSACHUSETTS INSTITUTE OF TECHNOLOGY

SYSTEM

ADVANCED LIGO

SUB-SYSTEM

AOS

NEXT ASSY

D1200174

PART NAME

aLIGO PCAL  
 MIRROR MOUNT ASSEMBLY, ETM BEAM

DESIGNER

C. CONLEY

12 JUL 2013

DRAFTER

C. CONLEY

17 SEP 2013

CHECKER

SEE DCN

APPROVAL

SEE DCN

SIZE

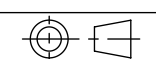
c

SCALE: NONE

DWG. NO.

D1200176

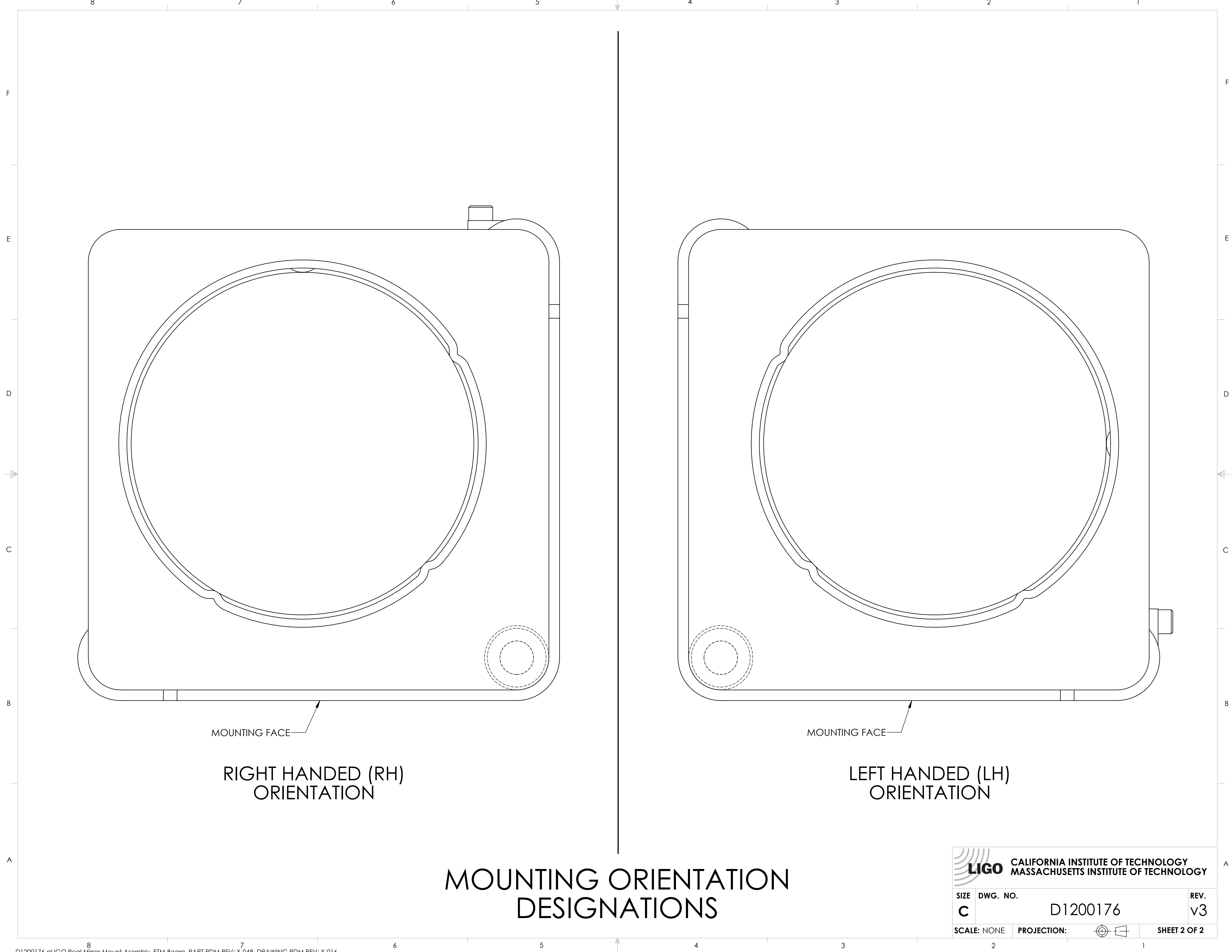
PROJECTION:



REV.

v3

SHEET 1 OF 2




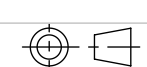
MOUNTING FACE

RIGHT HANDED (RH)  
ORIENTATION

MOUNTING FACE

LEFT HANDED (LH)  
ORIENTATION

# MOUNTING ORIENTATION DESIGNATIONS

 <b>LIGO</b> CALIFORNIA INSTITUTE OF TECHNOLOGY MASSACHUSETTS INSTITUTE OF TECHNOLOGY		
SIZE <b>C</b>	DWG. NO. D1200176	REV. v3
SCALE: NONE	PROJECTION:	 SHEET 2 OF 2