

NOTES CONTINUED:

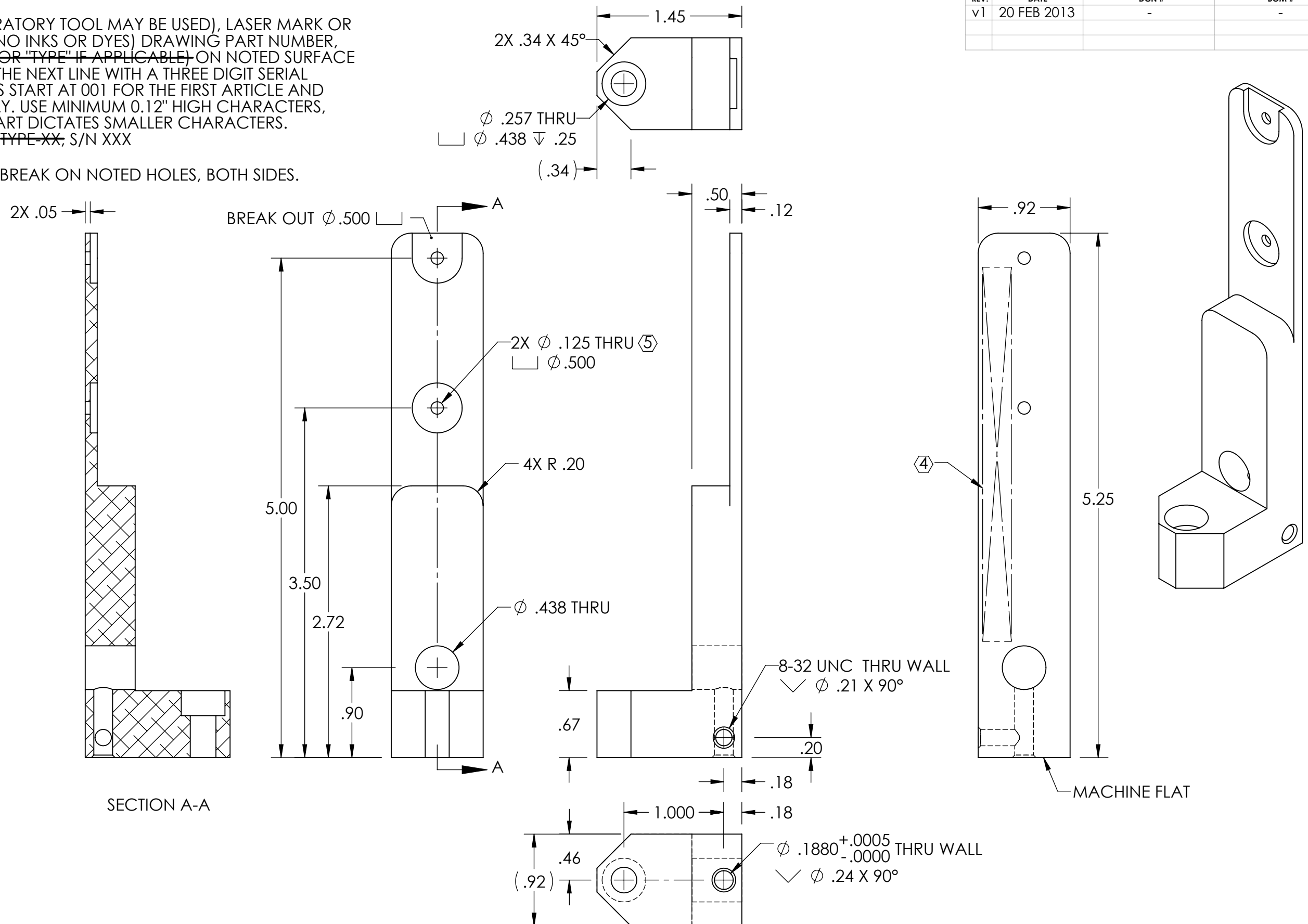
④ SCRIBE, ENGRAVE (A VIBRATORY TOOL MAY BE USED), LASER MARK OR MECHANICALLY STAMP (NO INKS OR DYES) DRAWING PART NUMBER, REVISION (AND VARIANT OR "TYPE" IF APPLICABLE) ON NOTED SURFACE OF PART FOLLOWED ON THE NEXT LINE WITH A THREE DIGIT SERIAL NUMBER. SERIAL NUMBERS START AT 001 FOR THE FIRST ARTICLE AND PROCEED CONSECUTIVELY. USE MINIMUM 0.12" HIGH CHARACTERS, UNLESS THE SIZE OF THE PART DICTATES SMALLER CHARACTERS. EXAMPLE: DXXXXXXX-VY, TYPE-XX, S/N XXX

⑤ 0.005 MAXIMUM EDGE BREAK ON NOTED HOLES, BOTH SIDES.

6. WEIGHT: 0.18 LB.

REV.	DATE	DCN #	BOM #
v1	20 FEB 2013	-	-

D1200171 aLIGO Pcal Tooling, Alignment Flag Base, PART PDM REV: X-007, DRAWING PDM REV: X-010



NOTES AND TOLERANCES: (UNLESS OTHERWISE SPECIFIED)				LIGO CALIFORNIA INSTITUTE OF TECHNOLOGY MASSACHUSETTS INSTITUTE OF TECHNOLOGY		PART NAME	
DIMENSIONS ARE IN INCHES TOLERANCES: .XX ± .01 .XXX ± .005 ANGULAR ± 0.5°				1. INTERPRET DRAWING PER ASME Y14.5-1994. 2. REMOVE ALL SHARP EDGES, .02 MAX. 3. DO NOT SCALE FROM DRAWING.		aLIGO PCAL TOOLING, ALIGNMENT FLAG BASE	
MATERIAL		FINISH		NEXT ASSY		DESIGNER R. SAVAGE DRAFTER C. CONLEY CHECKER C. CONLEY APPROVAL	
6061-T6 Al		250 μinch Ra MAX		D1300138		SIZE DWG. NO. B D1200171	
				SYSTEM ADVANCED LIGO SUB-SYSTEM AOS		DATE 20 FEB 2013 DATE 20 FEB 2013	
						REV. v1 SCALE: NONE PROJECTION: SHEET 1 OF 1	