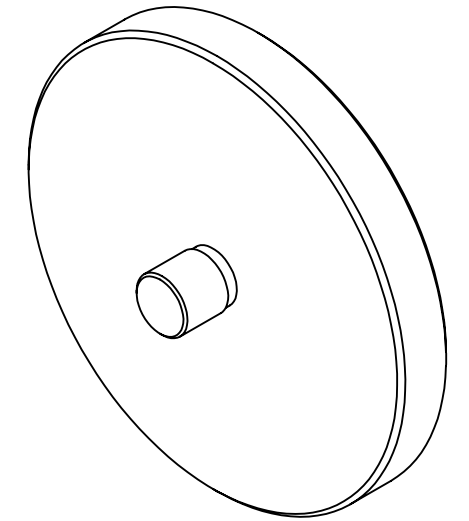
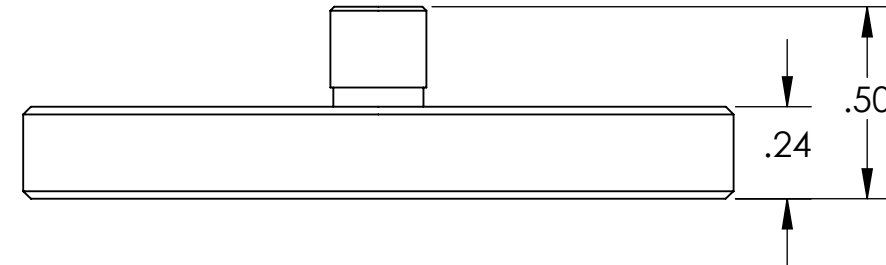


D1200166_d1lgo HAM FLAT BEAM ADAPTER, PART PDM REV: X-020, DRAWING PDM REV: X-003

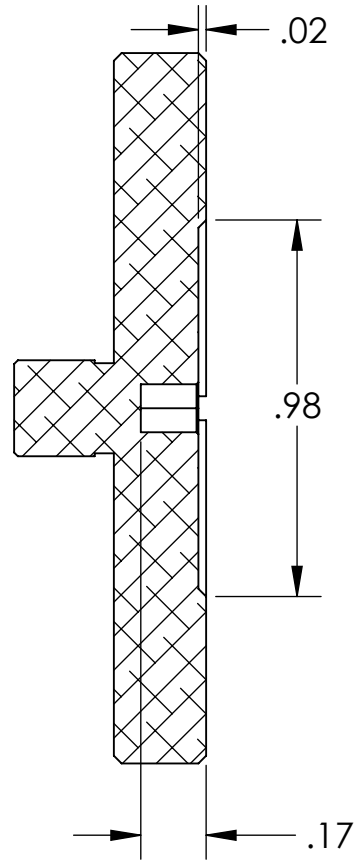
NOTES CONTINUED:
 5. SCRIBE, ENGRAVE (A VIBRATORY TOOL MAY BE USED), LASER MARK OR MECHANICALLY STAMP (NO INKS OR DYES) DRAWING PART NUMBER, REVISION (AND VARIANT OR "TYPE" IF APPLICABLE) ON NOTED SURFACE OF PART FOLLOWED ON THE NEXT LINE WITH A THREE DIGIT SERIAL NUMBER. SERIAL NUMBERS START AT 001 FOR THE FIRST ARTICLE AND PROCEED CONSECUTIVELY. USE MINIMUM 0.12" HIGH CHARACTERS, UNLESS THE SIZE OF THE PART DICTATES SMALLER CHARACTERS. EXAMPLE: DXXXXXX-VY, TYPE-XX, S/N XXX

- 6. APPROXIMATE WEIGHT = 0.076 LB.
- 7. MACHINE ALL SURFACES TO REMOVE OXIDES AND MILL FINISH. USE OF ABRASIVE REMOVAL TECHNIQUES IS NOT ALLOWED. REFER TO LIGO-E0900364
- 8. ALL PARTS SHALL BE MANUFACTURED IN ACCORDANCE WITH LIGO SPECIFICATION E0900364.
- 9. ALL MATERIAL IS TO BE VIRGIN MATERIAL (i.e. NO WELD REPAIRS, PLUGS OR RECYCLED MATERIAL). NO REPAIRS SHALL BE MADE UNLESS APPROVED IN ADVANCE, AND IN WRITING, BY LIGO LABORATORY. REFER TO LIGO-E0900364.

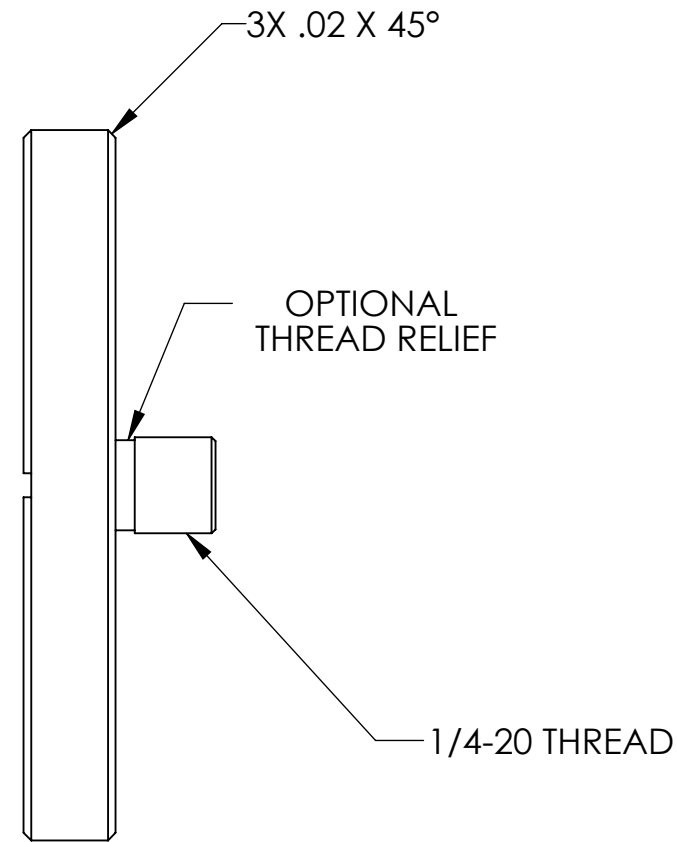
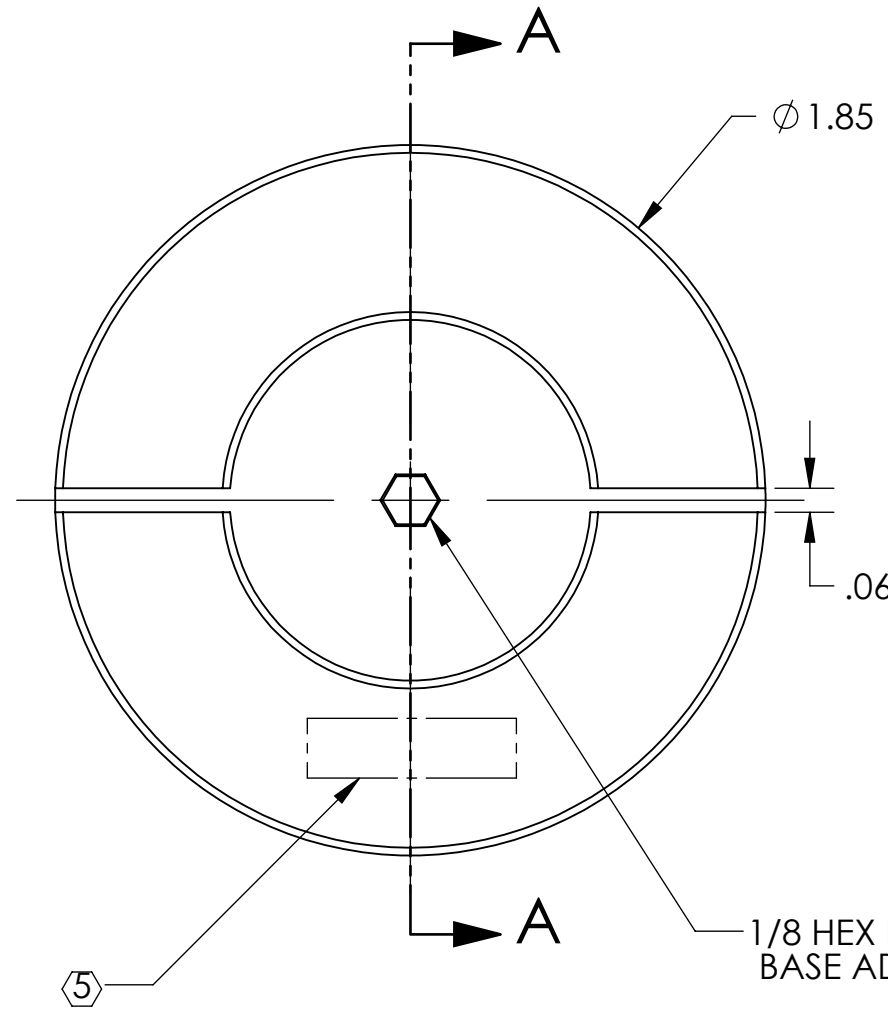
REV.	DATE	DCN #	DRAWING TREE #
v1	31 JAN 2012	E1101197	-
-	-	-	-
-	-	-	-



GENERAL VIEW FOR REFERENCE ONLY
NO SCALE



SECTION A-A



NOTES AND TOLERANCES: (UNLESS OTHERWISE SPECIFIED)				LIGO CALIFORNIA INSTITUTE OF TECHNOLOGY MASSACHUSETTS INSTITUTE OF TECHNOLOGY		PART NAME	
DIMENSIONS ARE IN INCHES				1. INTERPRET DRAWING PER ASME Y14.5-1994.		POST BASE ADAPTER	
TOLERANCES:				2. REMOVE ALL SHARP EDGES, .005-.015, FOR MACHINED PARTS. ROUND ALL EDGES APPROXIMATELY R.02 FOR SHEET METAL PARTS.		DESIGNER TQ. NGUYEN 30 JAN 2012	
.XX ± .01				3. DO NOT SCALE FROM DRAWING.		DRFTER TQ. NGUYEN 30 JAN 2012	
.XXX ± .005				4. ALL MACHINING FLUIDS MUST BE FULLY SYNTHETIC, FULLY WATER SOLUBLE AND FREE OF SULFUR, SILICONE, AND CHLORINE.		SIZE DWG. NO. B D1200166	
ANGULAR ± 1.0°				MATERIAL 6061-T6 Al		REV. v1	
				FINISH 63 μinch		SCALE: 2:1 PROJECTION:	
				NEXT ASSY D1102016		SHEET 1 OF 1	