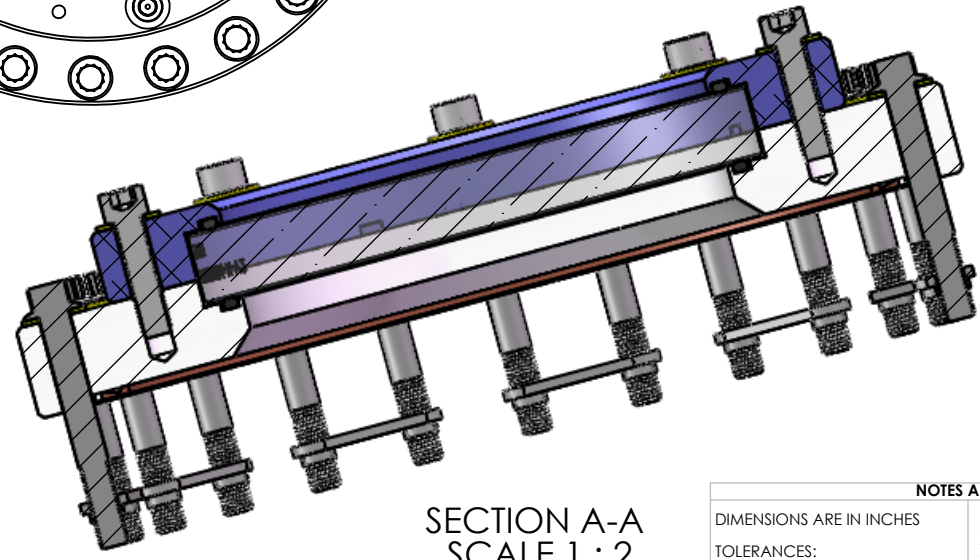
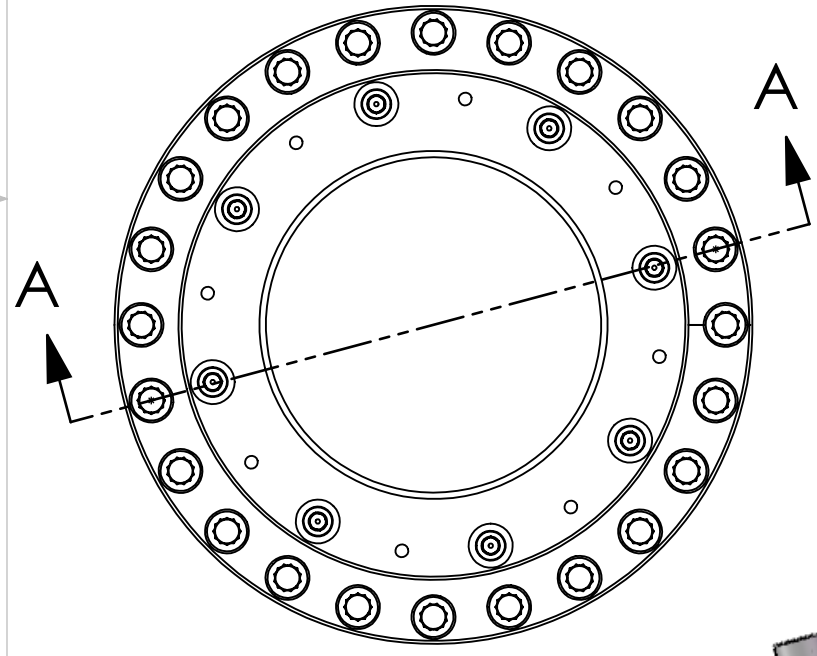
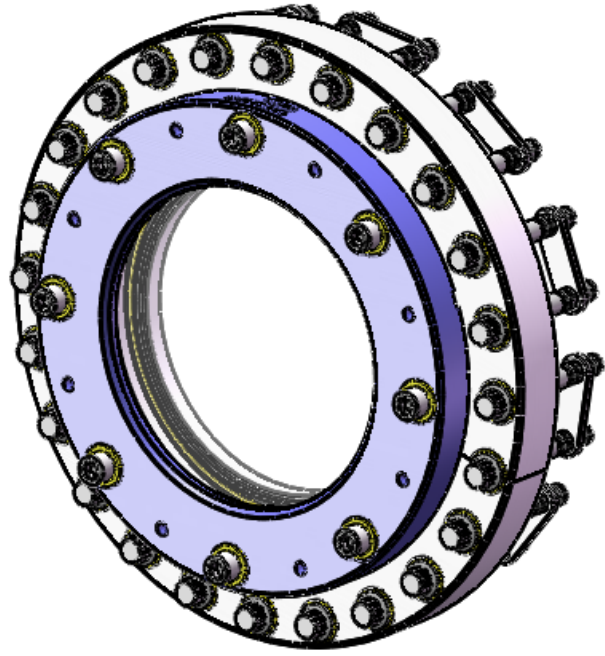
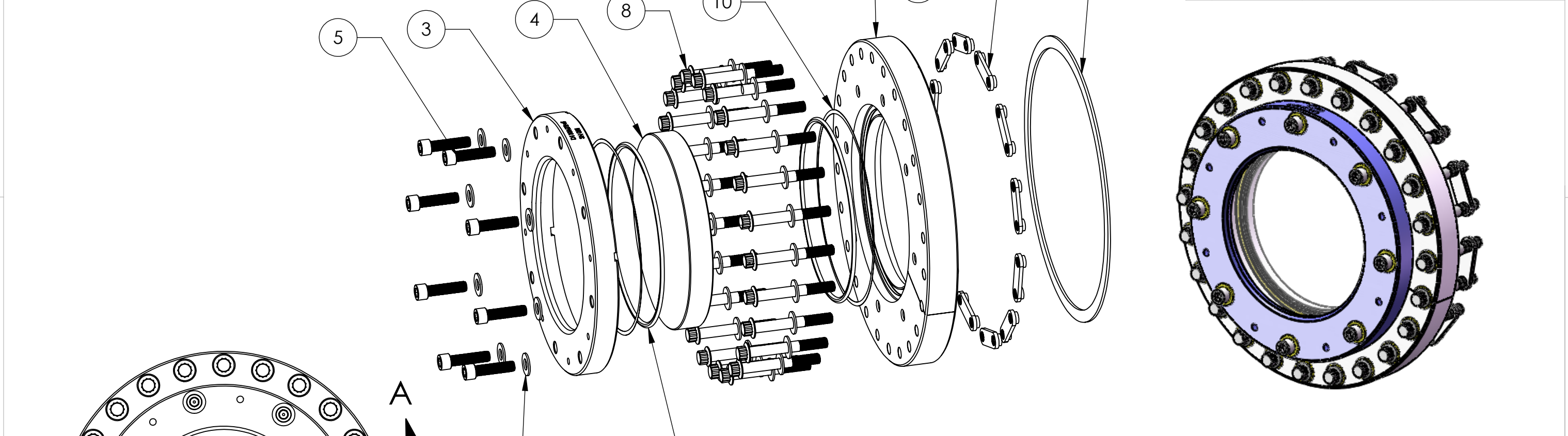


NOTES CONTINUED:
 5. APPROXIMATE WEIGHT = 17.253 LBS.
 6. ASSEMBLE IN ACCORDANCE WITH SPECIFICATION E1100484.

REV.	DATE	DCN #	DRAWING TREE #
v1	25 JAN 2012	E1100478-v4	-
-	-	-	-
-	-	-	-



SECTION A-A
SCALE 1 : 2

PARTS LIST		
ITEM NO.	PART NUMBER	QTY.
1	D1101001 aLIGO, High quality, 6in Viewport Flange	1
2	Parker O-Ring #2-253, Viton (R) Fluorocarbon (KFM), 75 Shore A or equivalent. O-rings must match-must be from the same lot/batch.	2
3	D1101672 aLIGO high power, non-wedged 6in Coverglass Clamp	1
4	D1101006-1 aLIGO, high quality, non-wedged 6in Viewport, Optic_AR1064/532	1
5	5/16-24 UNF x 1.25", Silver Plated, UC Components, #C-3120-NA (or Equivalent)	8
6	5/16" Flat Washer, NAS 1149-C0563R (or Equivalent)	8
7	Nut Plate, 10" Conflat, Nor-Cal NP-800 or Equivalent	12
8	5/16-24 UNF x 2.5", Silver Plated, 12 PT Flange Bolt, and Washers MDC Kit #190067 (qty 25) or equivalent, discard nut.	24
9	Copper Gasket, Conflat, MDC #191019 or Equivalent	1
10	D1003207 aLIGO, High quality, 6in viewport, Viewport spacer	2

NOTES AND TOLERANCES: (UNLESS OTHERWISE SPECIFIED)
 DIMENSIONS ARE IN INCHES
 TOLERANCES:
 .XX ± .03
 .XXX ± .010
 ANGULAR ± 1.0°
 MATERIAL N/A
 FINISH N/A μinch

LIGO CALIFORNIA INSTITUTE OF TECHNOLOGY MASSACHUSETTS INSTITUTE OF TECHNOLOGY
 SYSTEM AOS SUB-SYSTEM SLC
 PART NAME High power, Non-wedged 6in Viewport Assy with External Mounting Holes_AR1064/532
 DESIGNER TQ. NGUYEN 25 JAN 2012 SIZE DWG. NO. B D1200137 REV. v2
 DRAFTER TQ. NGUYEN 25 JAN 2012
 CHECKER L. AUSTIN
 APPROVAL M. SMITH
 SCALE: 1:3 PROJECTION: SHEET 1 OF 1

D1200137 aLIGO, high quality, non-wedged, 6in Viewport Assy with External Mounting Holes, PART PDM REV: X-002, DRAWING PDM REV: X-002