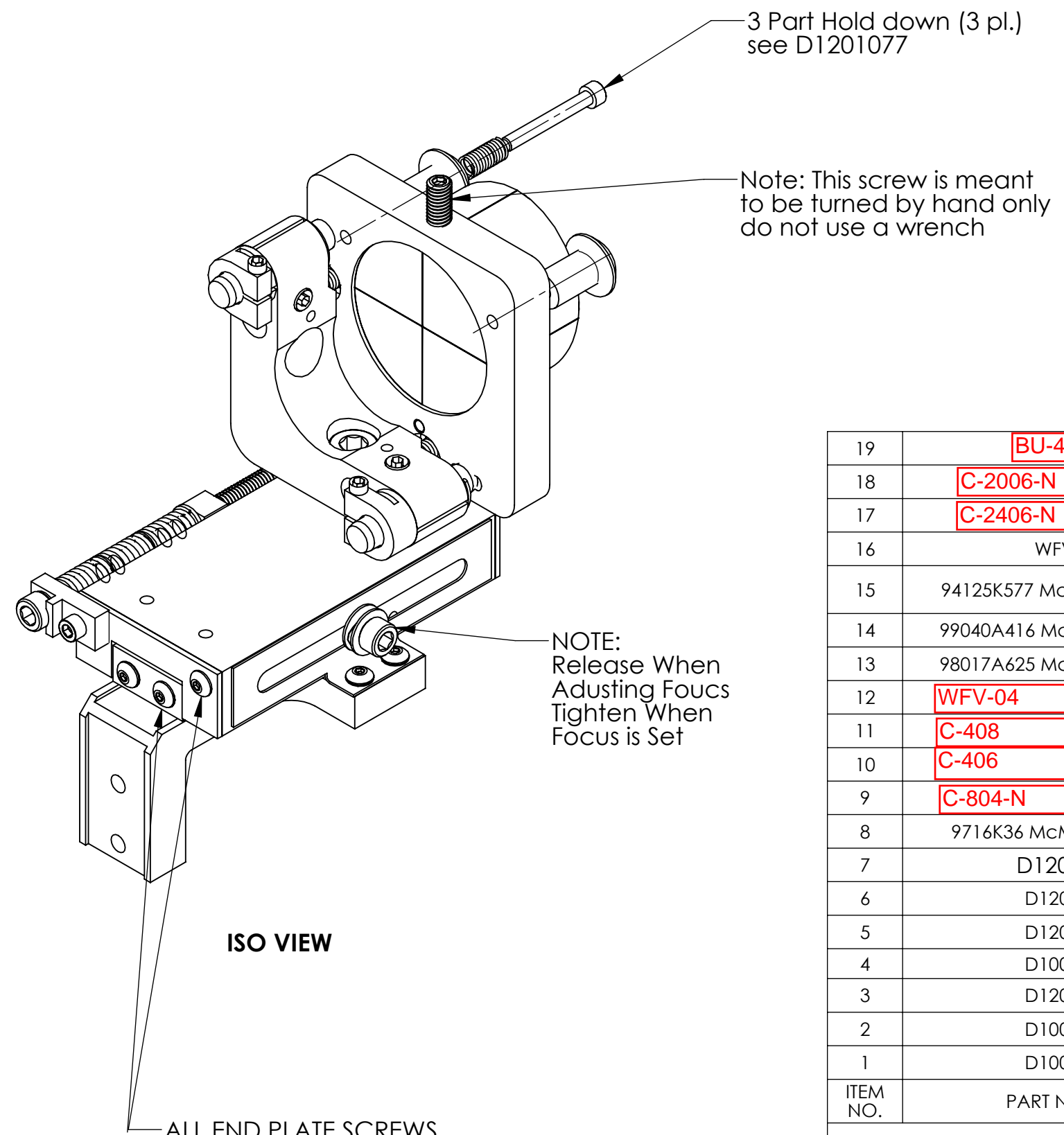


**NOTES CONTINUED:**  
 5. BAG AND TAG PARTS INDIVIDUALLY WITH THEIR DRAWING NUMBER, REVISION, VARIANT OR "TYPE" (IF APPLICABLE), AND QUANTITY.  
 EXAMPLE (TAG): DXXXXXX-VY, TYPE-XX, QTY: 1  
 6. APPROXIMATE WEIGHT = 0.667 LBS.

REV.	DATE	DCN #	BOM #
v1	02 APR 2012	E1200317-x0	-
v2	10-11-12	to follow	
v3	3-8-13	to follow	E1200793



19	BU-404	Button head cap screw #4-40 x .25", vented, SSTL	2
18	C-2006-N	SCREW, SHC, 1/4-20 X .38 LG.	1
17	C-2406-N	SCREW, SHC, 10-24 X .38 LG.	2
16	WFV-08	U-C COMP, #8 FLAT WASHER, VENTED, .169 ID X .304 OD X .032 THK, SSTL	3
15	94125K577 McMASTER-CARR	COMPRESSION SPRING, 7.1 MM O.D X 0.8 MM WIRE DIA X 15.5 MM LG, 2.52 N/MM (OR EQUIV)	5
14	99040A416 McMASTER-CARR	SHIMMING WASHER, .188 ID X .250 OD X .016 THK, SSTL	3
13	98017A625 McMASTER-CARR	#8 FLAT WASHER, .17 ID X .38 OD X .032 THK, NAS 1149-CN832R (OR EQUIV)	4
12	WFV-04	WASHER, VENTED, NO. 4	2
11	C-408	SCREW, SHC, VENTED, #4-40 X .50 LG ( OR EQUIV)	3
10	C-406	SCREW, SHC, #4-40 X .38 LG, Vented S. STL	2
9	C-804-N	SCREW, SHC, #8-32 X .25 LG, SSTL	2
8	9716K36 McMASTER-CARR	DISC SPRING, .174 ID X .322 OD X .0050 THIK, 1.50 Lb @ .034" DEFLECTION	2
7	D1201077	ALIGO, TMS SECONDARY MIRROR MT. ASSY.	1
6	D1200246	ALIGO TMS FOCUS SLIDE ASSEMBLY	1
5	D1200321	ALIGO, AOS, TMS TELESCOPE, SECONDARY MIRROR, MT. BRACKET	1
4	D1001973	ALIGO TMS FOCUS SCREW	1
3	D1200579	ALIGO TMS FOCUS SLIDE LOCK	1
2	D1001834	ALIGO TMS HOLDER SEC. FOCUS	1
1	D1001813	ALIGO TMS THREAD MT. SEC. FOCUS	1
ITEM NO.	PART NUMBER	DESCRIPTION	TOTAL

D1102365 aLIGO TMS Telescope Secondary Mirror Assembly, PART PDM REV: X-050, DRAWING PDM REV: X-024

NOTES AND TOLERANCES: (UNLESS OTHERWISE SPECIFIED)

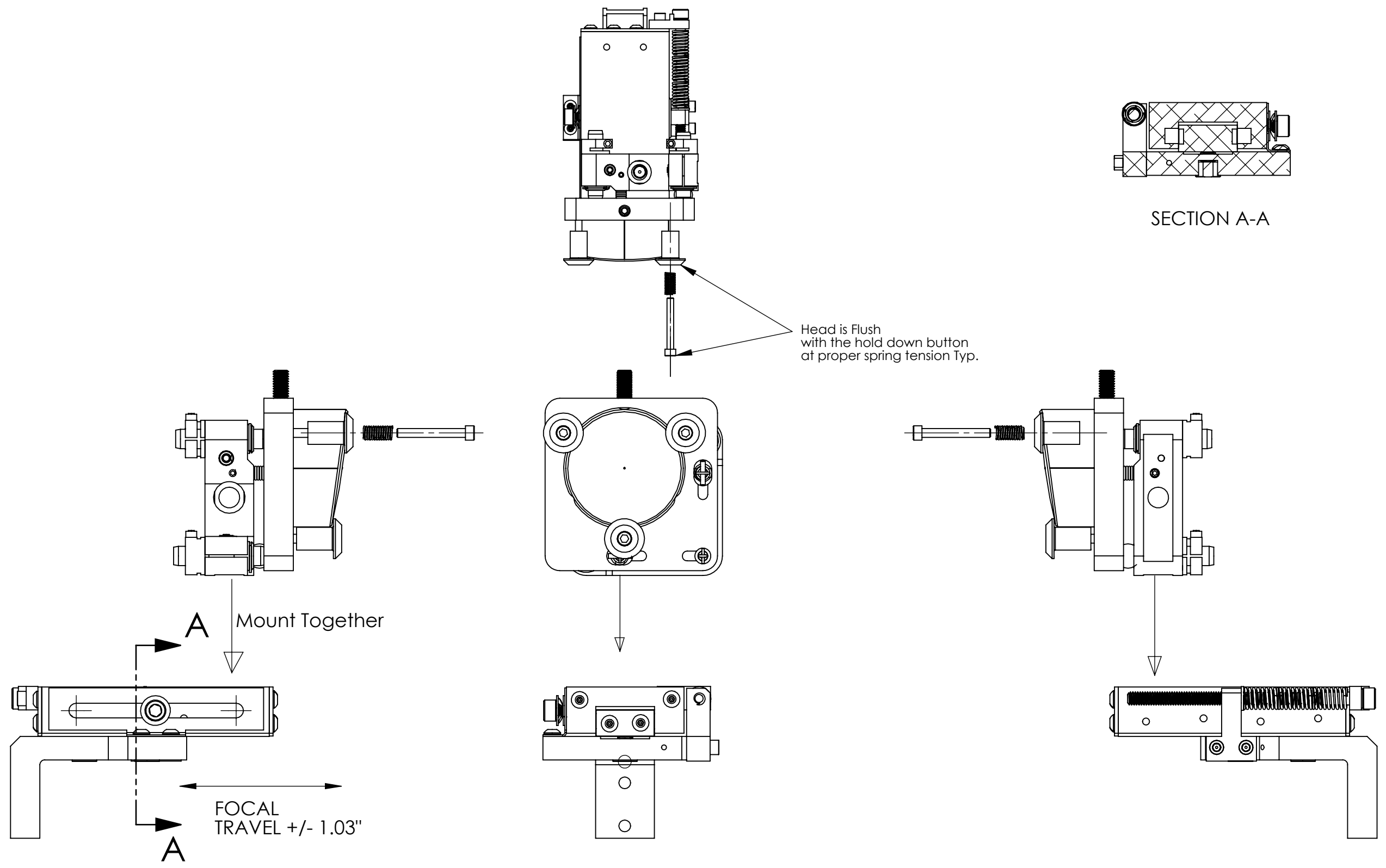
MATERIAL	N/A	FINISH	N/A μinch	SYSTEM	ADVANCED LIGO	SUB-SYSTEM	AOS	DESIGNER	K. MAILAND	16 DEC 2011	SIZE	DWG. NO.	REV.
				NEXT ASSY	D1102361			DRAFTER	E.SANCHEZ	02 APR 2012	B	D1102365	V4
PART NAME: aLIGO TMS TELESCOPE SECONDARY MIRROR ASSEMBLY CHECKER: SEE DCC APPROVAL: SEE DCC SCALE: NONE PROJECTION:											SHEET 1 OF 3		

D1102365 dLIGO TMS Telescope Secondary Mirror Assembly, PART PDM REV: X-050, DRAWING-PDM REV: X-024

8 7 6 5 4 3 2 1

D  
C  
B  
A

D  
C  
B  
A

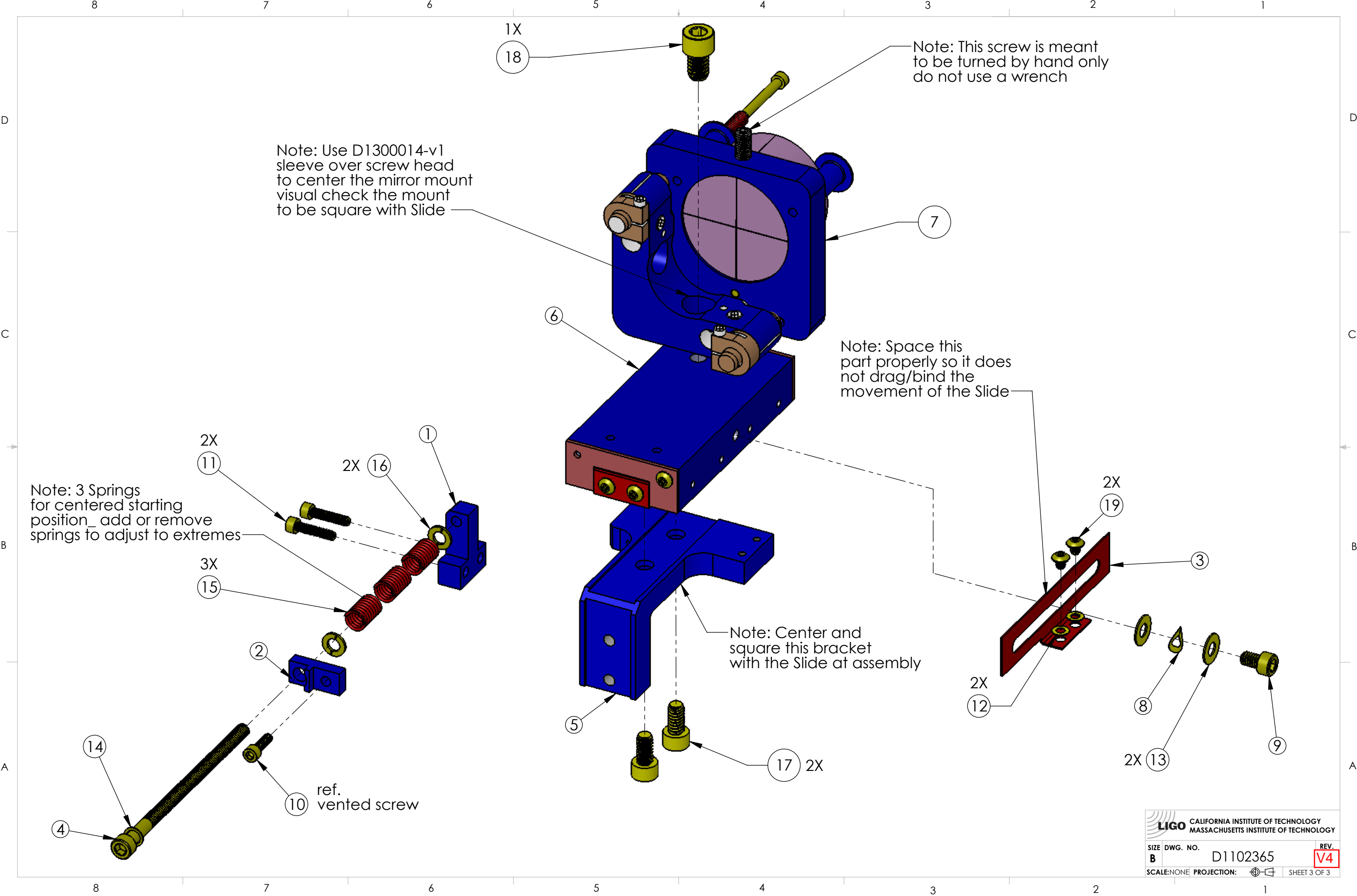


**LIGO** CALIFORNIA INSTITUTE OF TECHNOLOGY  
MASSACHUSETTS INSTITUTE OF TECHNOLOGY

SIZE	DWG. NO.	REV.
B	D1102365	V4
SCALE: NONE		PROJECTION:
		SHEET 2 OF 3

8 7 6 5 4 3 2 1

D1102365 dLIGO TMS Telescope Secondary Mirror Assembly, PART PDM REV: X-050, DRAWING PDM REV: X-024



1X  
18

Note: This screw is meant to be turned by hand only do not use a wrench

Note: Use D1300014-v1 sleeve over screw head to center the mirror mount visual check the mount to be square with Slide

Note: Space this part properly so it does not drag/bind the movement of the Slide

Note: 3 Springs for centered starting position\_ add or remove springs to adjust to extremes

Note: Center and square this bracket with the Slide at assembly

ref. vented screw

**LIGO** CALIFORNIA INSTITUTE OF TECHNOLOGY  
MASSACHUSETTS INSTITUTE OF TECHNOLOGY

SIZE	DWG. NO.	REV.
B	D1102365	V4
SCALE: NONE	PROJECTION:	SHEET 3 OF 3