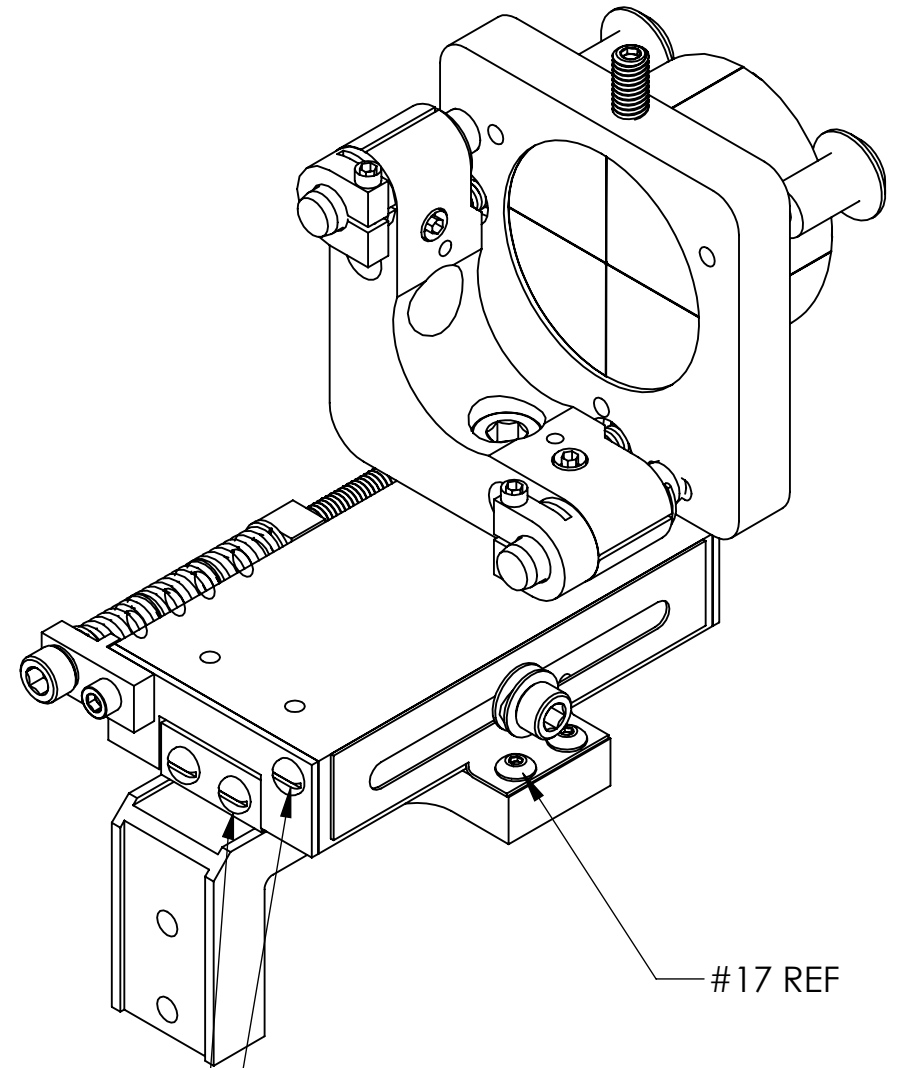


NOTES CONTINUED:
 5. BAG AND TAG PARTS INDIVIDUALLY WITH THEIR DRAWING NUMBER, REVISION, VARIANT OR "TYPE" (IF APPLICABLE), AND QUANTITY.
 EXAMPLE (TAG): DXXXXXX-VY, TYPE-XX, QTY: 1
 6. APPROXIMATE WEIGHT = 0.653 LBS.

REV.	DATE	DCN #	BOM #
v1	02 APR 2012	E1200317-x0	-
v2	10-11-12	to follow	



ISO VIEW

ALL END PLATE SCREWS ARE NOW TO BE VENTED

Note this part #17 is either a vented SHCS 1/4 long or one of the button head screws taken from the end of the slide

19	MS16995-47 OR EQ.	SCREW, SHC, 1/4-20 X .38 LG.	1
18	MS16995-35 OR EQ.	SCREW, SHC, 10-24 X .38 LG.	2
17	BU-402	U-C-COMP, SOCKET DRIVE BUTTON HEAD SCREW, #4-40 X .13 LG, SSTL	3
16	WFV-08	U-C COMP, #8 FLAT WASHER, VENTED, .169 ID X .304 OD X .032 THK, SSTL	3
15	94125K577 McMASTER-CARR	COMPRESSION SPRING, 7.1 MM O.D X 0.8 MM WIRE DIA X 15.5 MM LG, 2.52 N/MM (OR EQUIV)	5
14	99040A416 McMASTER-CARR	SHIMMING WASHER, .188 ID X .250 OD X .016 THK, SSTL	3
13	98017A625 McMASTER-CARR	#8 FLAT WASHER, .17 ID X .38 OD X .032 THK, NAS 1149-CN832R (OR EQUIV)	4
12	96861A200 McMASTER-CARR	WASHER, VENTED, NO. 4	2
11	93235A110 McMASTER-CARR	SCREW, SHC, VENTED, #4-40 X .50 LG (OR EQUIV)	3
10	93235A108 McMASTER-CARR	SCREW, SHC, #4-40 X .38 LG, SSTL	2
9	92196A190 McMASTER-CARR	SCREW, SHC, #8-32 X .25 LG, SSTL	2
8	9716K36 McMASTER-CARR	DISC SPRING, .174 ID X .322 OD X .0050 THIK, 1.50 Lb @ .034" DEFLECTION	2
7	D1201077-aLigo sec. mirror mt. tip-tilt sub assem	ALIGO, TMS SECONDARY MIRROR MT. ASSY.	1
6	D1200246	aLIGO TMS FOCUS SLIDE ASSEMBLY	1
5	D1200321	ALIGO, AOS, TMS TELESCOPE, SECONDARY MIRROR, MT. BRACKET	1
4	D1001973	aLIGO TMS FOCUS SCREW	1
3	D1200579	aLIGO TMS FOCUS SLIDE LOCK	1
2	D1001834	aLIGO TMS HOLDER SEC. FOCUS	1
1	D1001813	aLIGO TMS THREAD MT. SEC. FOCUS	1
ITEM NO.	PART NUMBER	DESCRIPTION	TOTAL

PARTS LIST

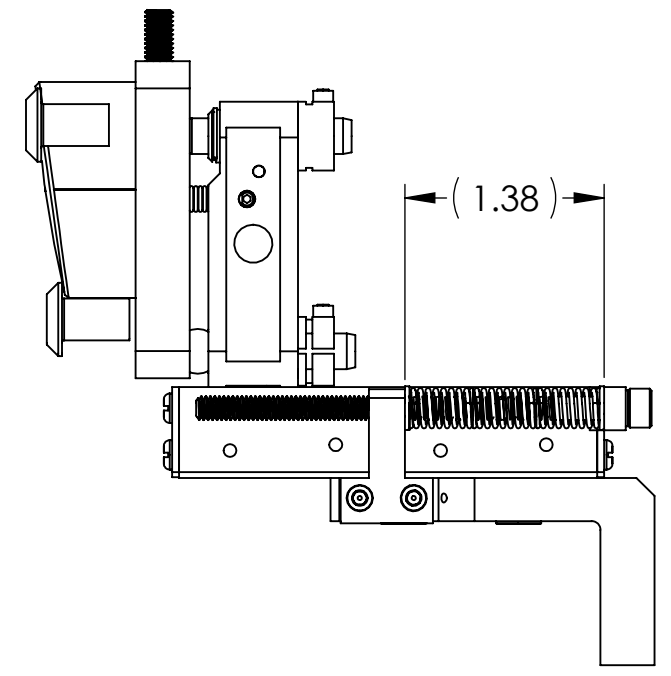
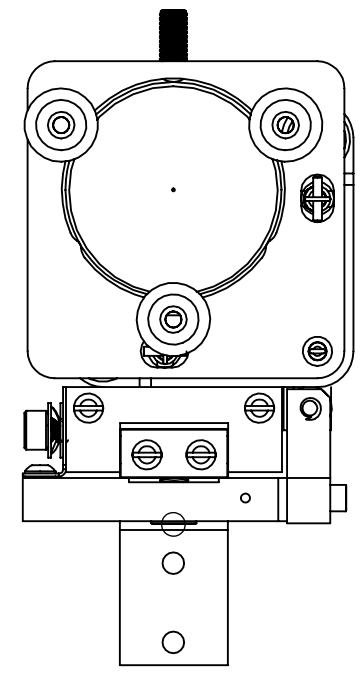
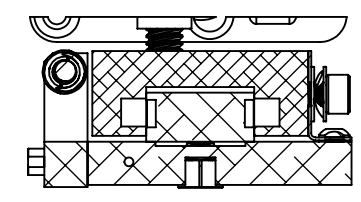
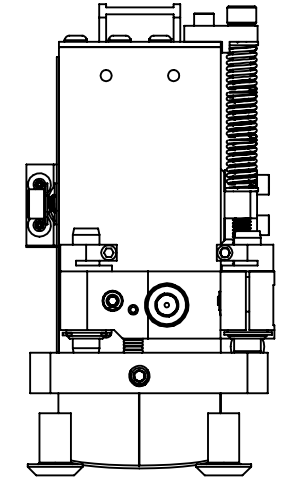
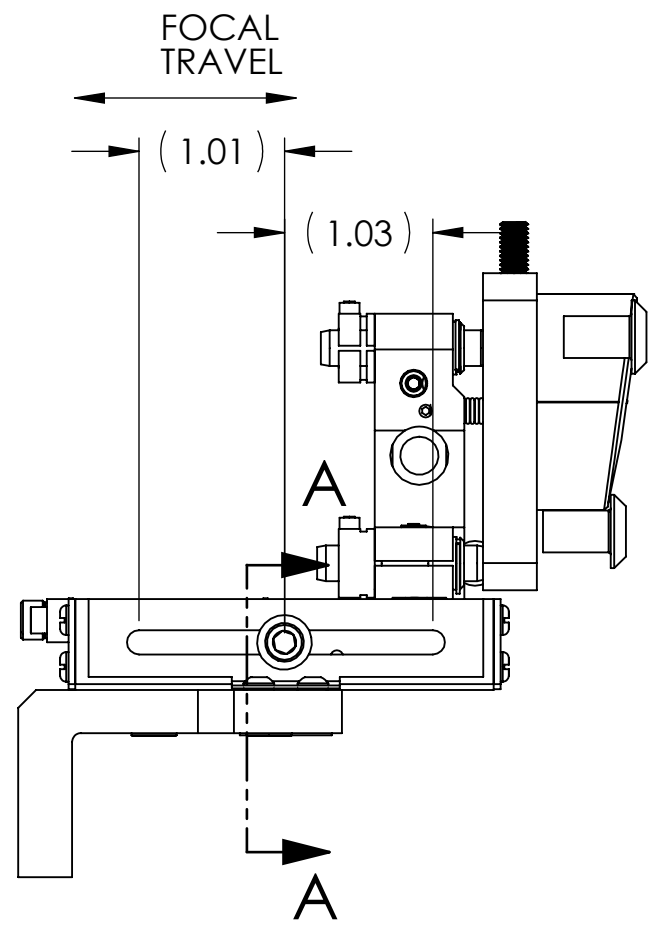
NOTES AND TOLERANCES: (UNLESS OTHERWISE SPECIFIED)				CALIFORNIA INSTITUTE OF TECHNOLOGY MASSACHUSETTS INSTITUTE OF TECHNOLOGY		PART NAME aLIGO TMS TELESCOPE SECONDARY MIRROR ASSEMBLY	
MATERIAL N/A		FINISH N/A μinch		SYSTEM ADVANCED LIGO		SUB-SYSTEM AOS	
NEXT ASSY D1102361				DESIGNER K. MAILAND 16 DEC 2011		SIZE DWG. NO. B D1102365	
				DRAFTER E.SANCHEZ 02 APR 2012		REV. v2	
				CHECKER SEE DCC		SCALE: NONE PROJECTION:	
				APPROVAL SEE DCC		SHEET 1 OF 3	

D1102365 aLIGO TMS Telescope Secondary Mirror Assembly, PART PDM REV: X-038, DRAWING PDM REV: X-011

D1102365 dLIGO TMS Telescope Secondary Mirror Assembly, PART PDM REV: X-038, DRAWING PDM REV: X-011

8 7 6 5 4 3 2 1

D
C
B
A



8 7 6 5 4 3 2 1

LIGO CALIFORNIA INSTITUTE OF TECHNOLOGY
MASSACHUSETTS INSTITUTE OF TECHNOLOGY

SIZE	DWG. NO.	REV.
B	D1102365	v2
SCALE: NONE		PROJECTION:
		SHEET 2 OF 3

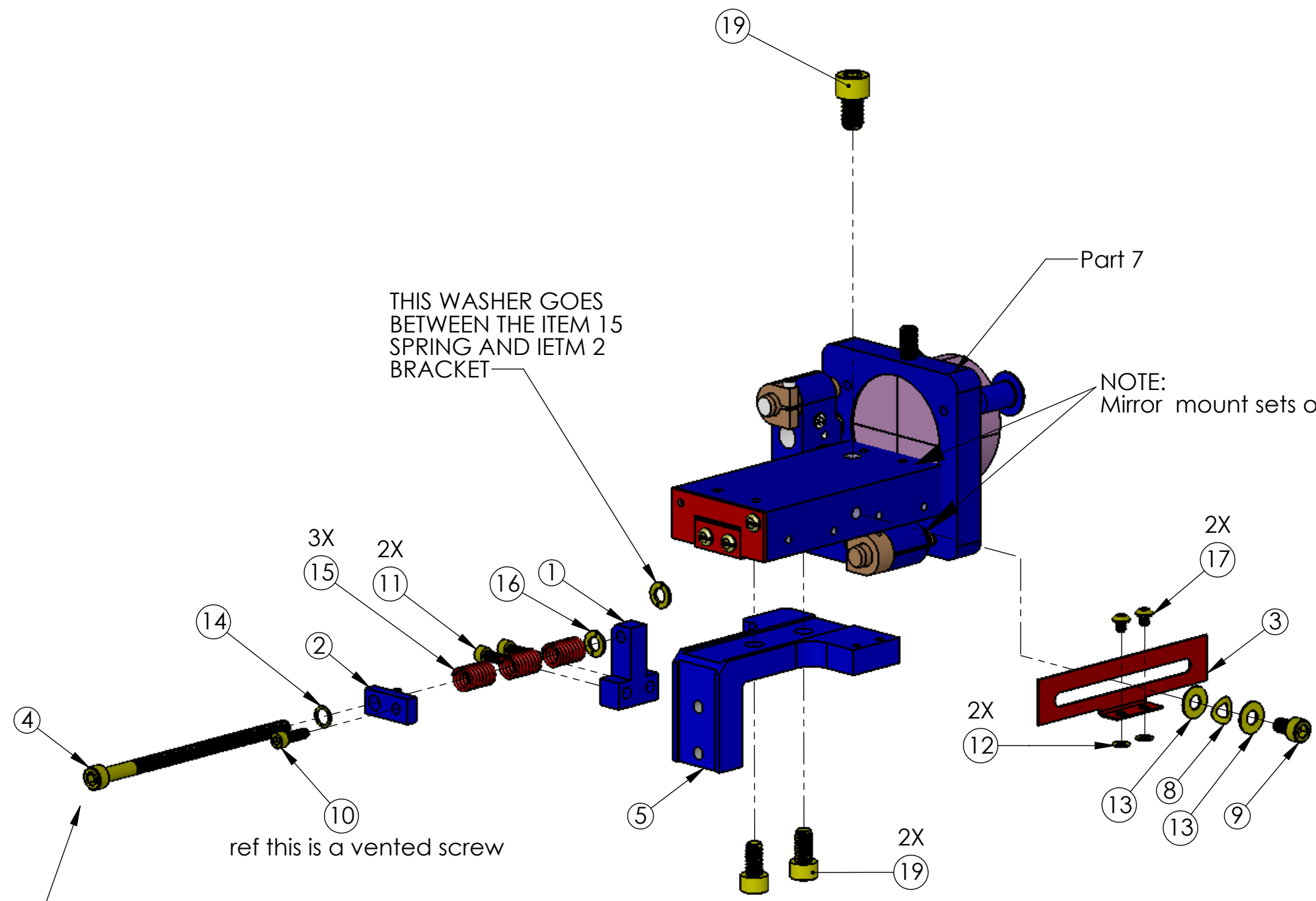
D1102365 dLIGO TMS Telescope Secondary Mirror Assembly, PART PDM REV: X-038, DRAWING PDM REV: X-011

8 7 6 5 4 3 2 1

D
C
B
A

D
C
B
A

REF. D1101575
wrench tool



THIS WASHER GOES
BETWEEN THE ITEM 15
SPRING AND IETM 2
BRACKET

ref this is a vented screw

LIGO CALIFORNIA INSTITUTE OF TECHNOLOGY
MASSACHUSETTS INSTITUTE OF TECHNOLOGY

SIZE	DWG. NO.	REV.
B	D1102365	v2
SCALE: NONE	PROJECTION:	SHEET 3 OF 3

8 7 6 5 4 3 2 1