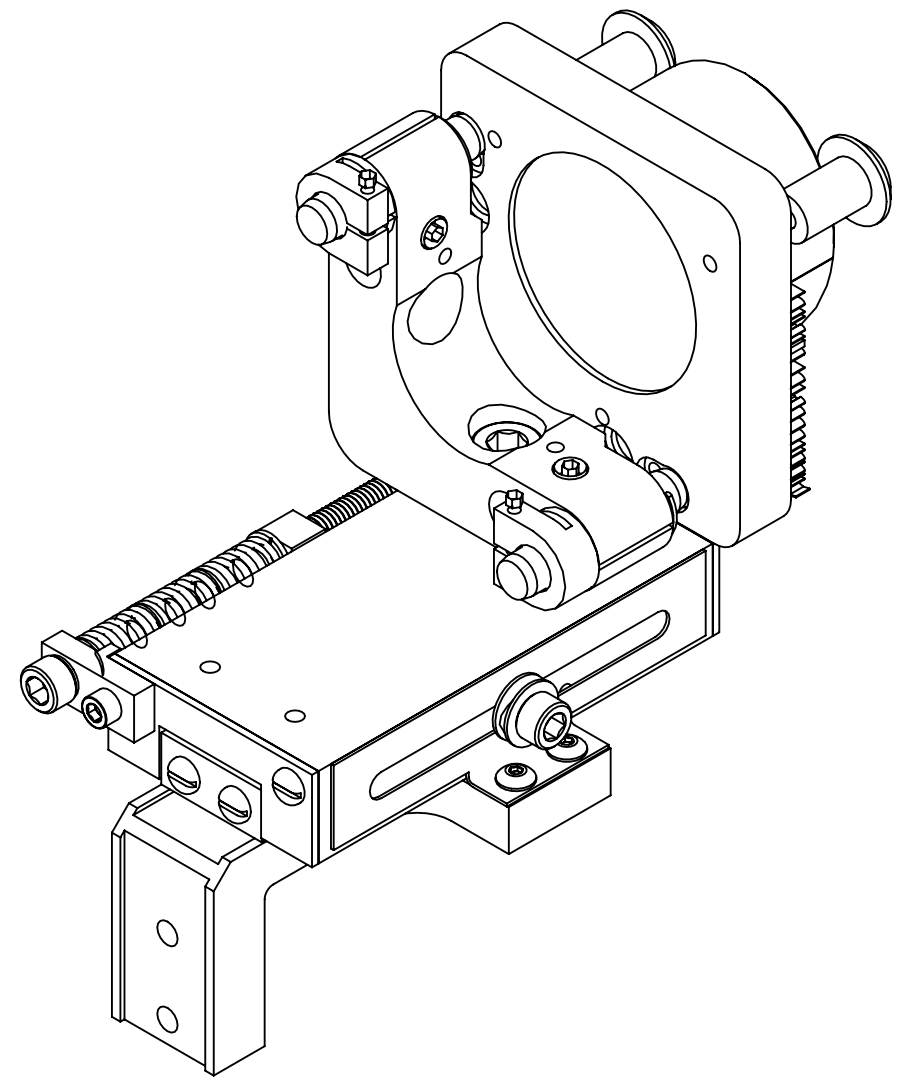


**NOTES CONTINUED:**  
 5. BAG AND TAG PARTS INDIVIDUALLY WITH THEIR DRAWING NUMBER, REVISION, VARIANT OR "TYPE" (IF APPLICABLE), AND QUANTITY.  
 EXAMPLE (TAG): DXXXXXX-VY, TYPE-XX, QTY: 1  
 6. APPROXIMATE WEIGHT = 0.411 LBS.

REV.	DATE	DCN #	BOM #
v1	02 APR 2012	E1200317-x0	-



**ISO VIEW**

20	MS16995-47 OR EQ.	SCREW, SHC, 1/4-20 X .38 LG.	1
19	MS16995-35 OR EQ.	SCREW, SHC, 10-24 X .38 LG.	2
18	BU-402	U-C-COMP, SOCKET DRIVE BUTTON HEAD SCREW, #4-40 X .13 LG, SSTL	3
17	WFV-08	U-C COMP, #8 FLAT WASHER, VENTED, .169 ID X .304 OD X .032 THK, SSTL	2
16	92373A141 McMASTER-CARR	SPRING PIN, 3/32 DIA. X .38 LG.	1
15	94125K577 McMASTER-CARR	COMPRESSION SPRING, 7.1 MM O.D X 0.8 MM WIRE DIA X 15.5 MM LG, 2.52 N/MM (OR EQUIV)	5
14	99040A416 McMASTER-CARR	SHIMMING WASHER, .188 ID X .250 OD X .016 THK, SSTL	3
13	98017A625 McMASTER-CARR	#8 FLAT WASHER, .17 ID X .38 OD X .032 THK, NAS 1149-CN832R (OR EQUIV)	4
12	96861A200 McMASTER-CARR	WASHER, VENTED, NO. 4	2
11	93235A110 McMASTER-CARR	SCREW, SHC, VENTED, #4-40 X .50 LG ( OR EQUIV)	3
10	93235A108 McMASTER-CARR	SCREW, SHC, #4-40 X .38 LG, SSTL	2
9	92196A190 McMASTER-CARR	SCREW, SHC, #8-32 X .25 LG, SSTL	2
8	9716K36 McMASTER-CARR	DISC SPRING, .174 ID X .322 OD X .0050 THIK, 1.50 Lb @ .034" DEFLECTION	2
7		ALIGO, TMS SECONDARY MIRROR MT. ASSY.	1
6	D1200246	ALIGO TMS FOCUS SLIDE ASSEMBLY	1
5	D1200321	ALIGO, AOS, TMS TELESCOPE, SECONDARY MIRROR, MT. BRACKET	1
4	D1001973	ALIGO TMS FOCUS SCREW	1
3	D1001841	ALIGO TMS FOCUS SLIDE LOCK	1
2	D1001834	ALIGO TMS HOLDER SEC. FOCUS	1
1	D1001813	ALIGO TMS THREAD MT. SEC. FOCUS	1
ITEM NO.	PART NUMBER	DESCRIPTION	TOTAL

**PARTS LIST**

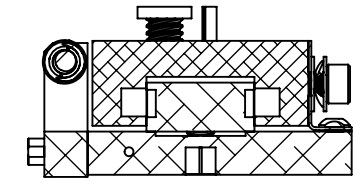
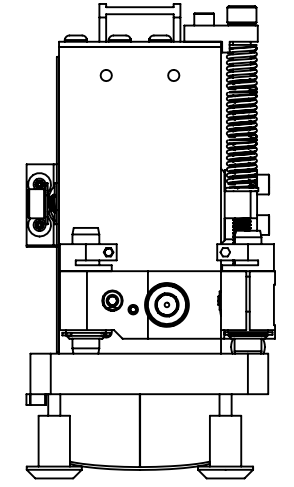
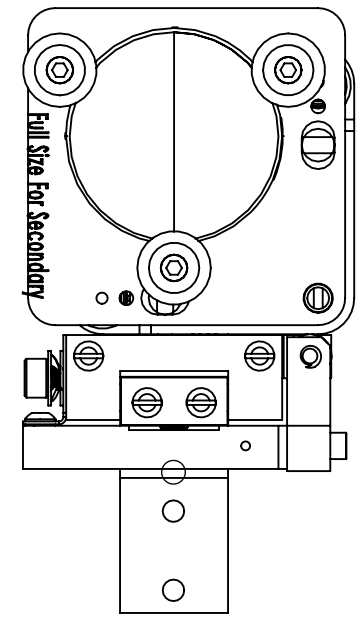
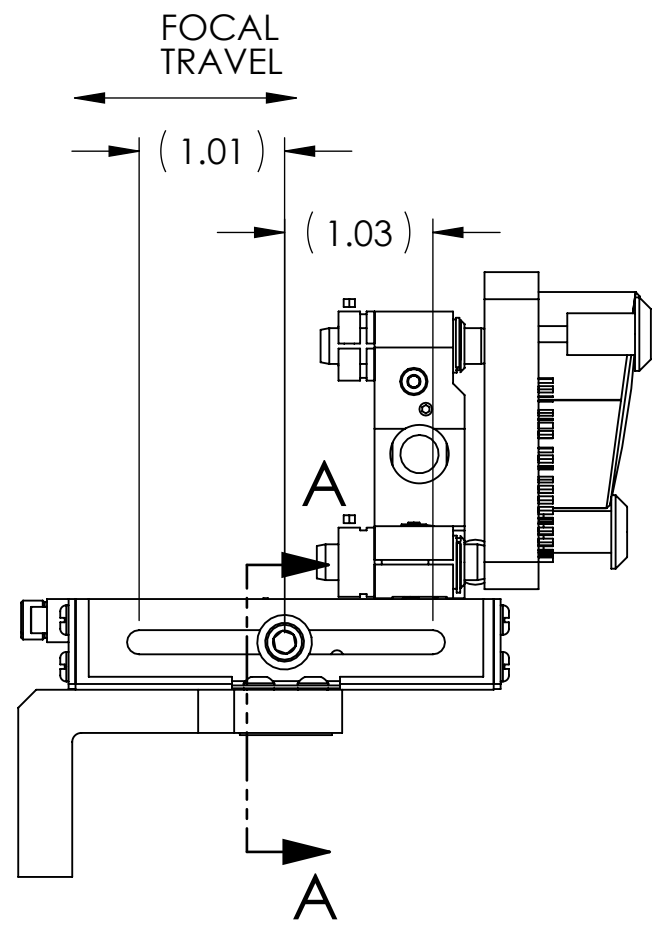
NOTES AND TOLERANCES: (UNLESS OTHERWISE SPECIFIED)				CALIFORNIA INSTITUTE OF TECHNOLOGY MASSACHUSETTS INSTITUTE OF TECHNOLOGY		PART NAME <b>ALIGO TMS TELESCOPE                  SECONDARY MIRROR ASSEMBLY</b>	
MATERIAL		FINISH		NEXT ASSY		DESIGNER: K. MAILAND 16 DEC 2011 DRAFTER: E.SANCHEZ 02 APR 2012 CHECKER: SEE DCC APPROVAL: SEE DCC	
N/A		N/A μinch		D1102361		SIZE DWG. NO. <b>B D1102365</b>	
				SYSTEM: ADVANCED LIGO SUB-SYSTEM: AOS		REV. v1 SCALE: NONE PROJECTION:  SHEET 1 OF 3	

D1102365 ALIGO TMS Telescope Secondary Mirror Assembly, PART PDM REV: X-027, DRAWING PDM REV: X-002

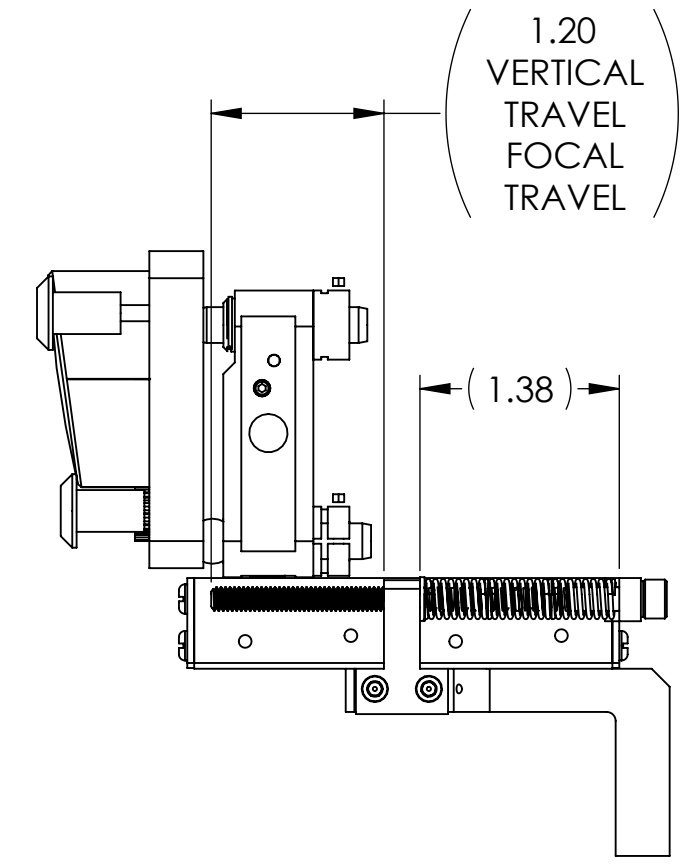
D1102365 dLIGO TMS Telescope Secondary Mirror Assembly, PART PDM REV: X-027, DRAWING PDM REV: X-002

8 7 6 5 4 3 2 1

D  
C  
B  
A



SECTION A-A

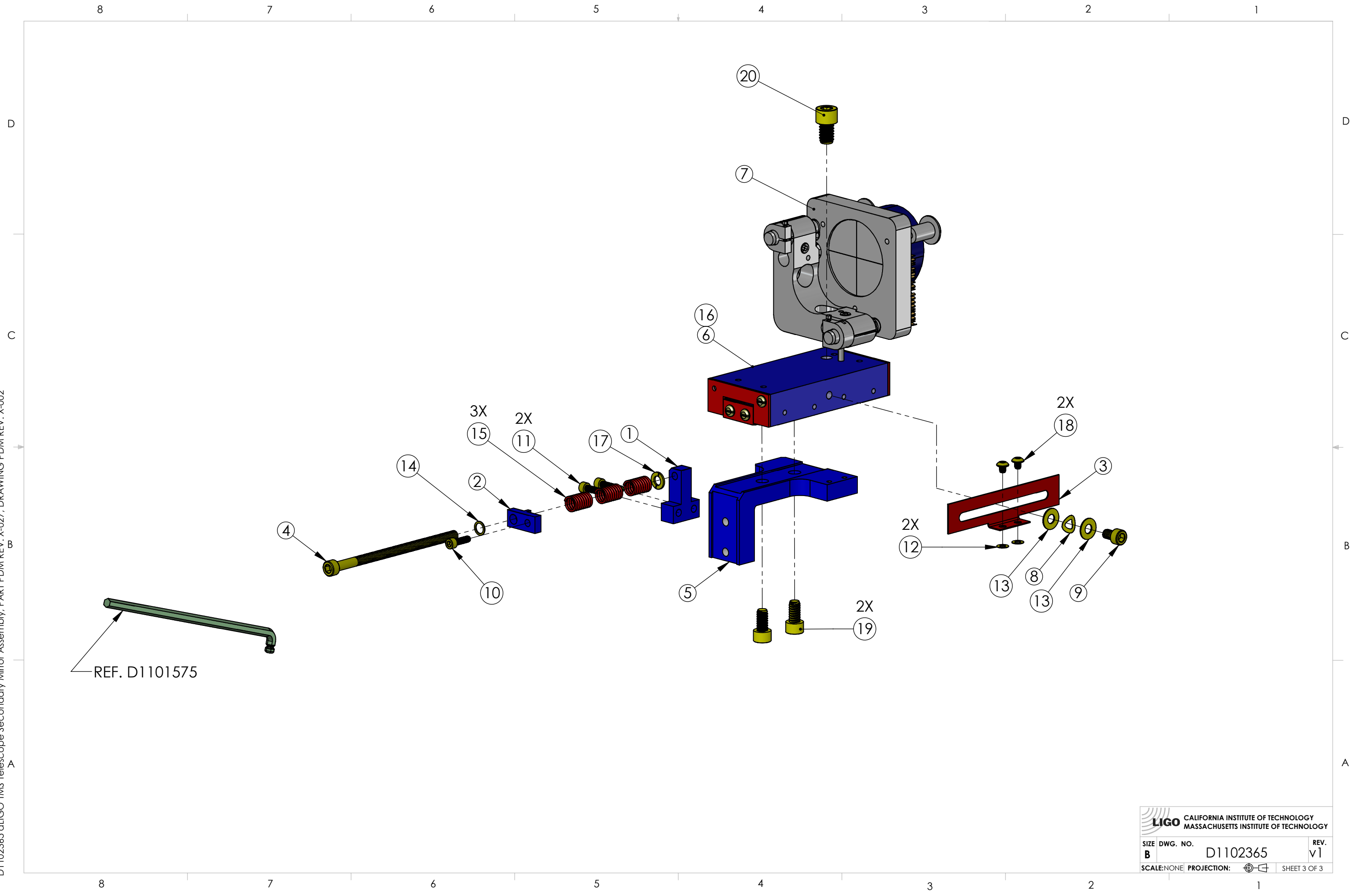


8 7 6 5 4 3 2 1

**LIGO** CALIFORNIA INSTITUTE OF TECHNOLOGY  
MASSACHUSETTS INSTITUTE OF TECHNOLOGY

SIZE	DWG. NO.	REV.
B	D1102365	v1
SCALE: NONE		PROJECTION:
		SHEET 2 OF 3

D1102365 dLIGO TMS Telescope Secondary Mirror Assembly, PART PDM REV: X-027, DRAWING-PDM REV: X-002



**LIGO** CALIFORNIA INSTITUTE OF TECHNOLOGY  
 MASSACHUSETTS INSTITUTE OF TECHNOLOGY

SIZE	DWG. NO.	REV.
B	D1102365	v1
SCALE: NONE		PROJECTION:
		SHEET 3 OF 3