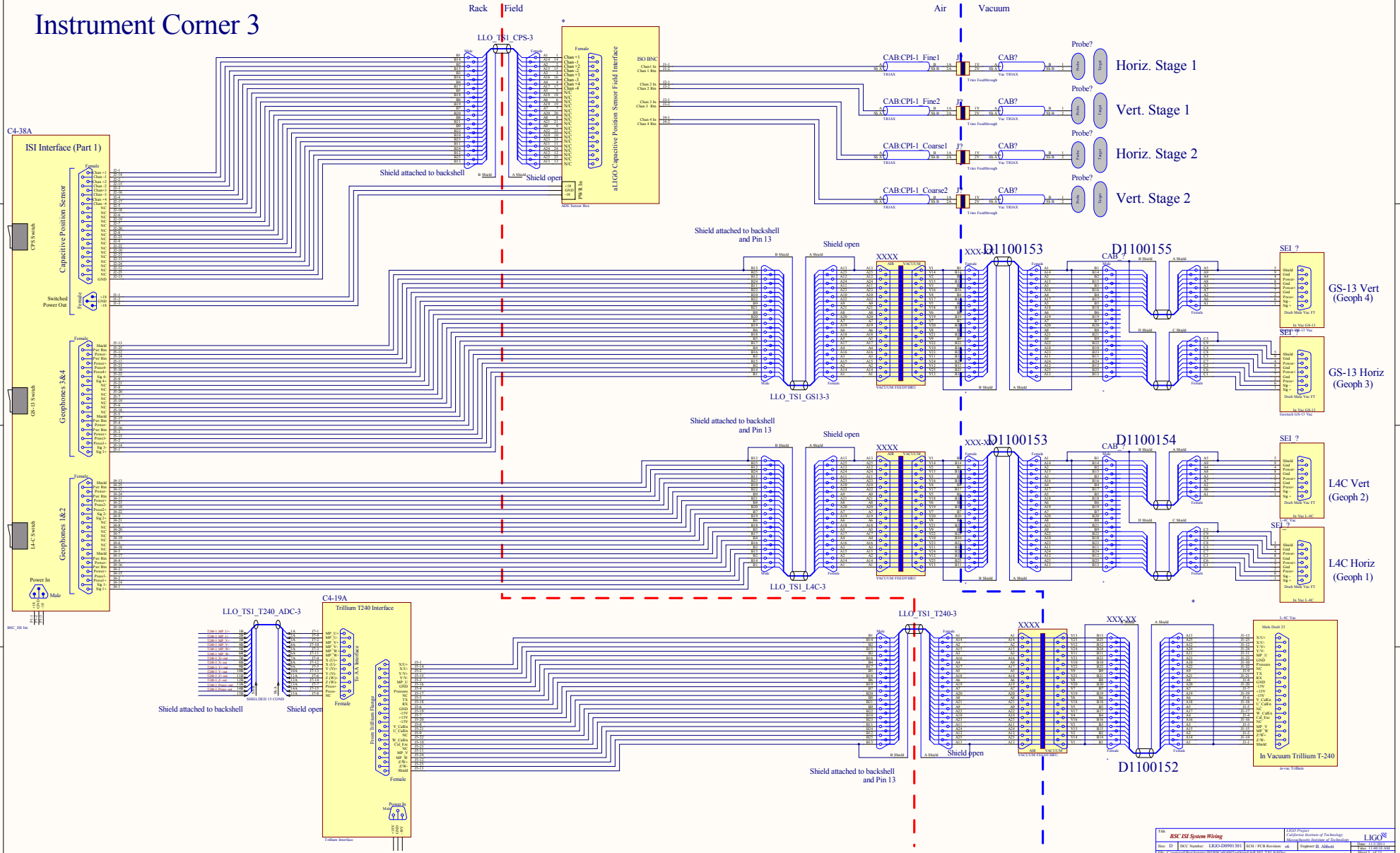
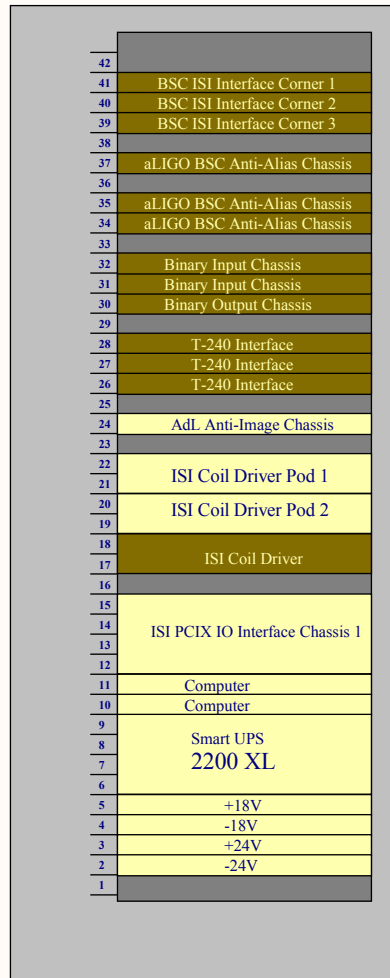


Instrument Corner 3

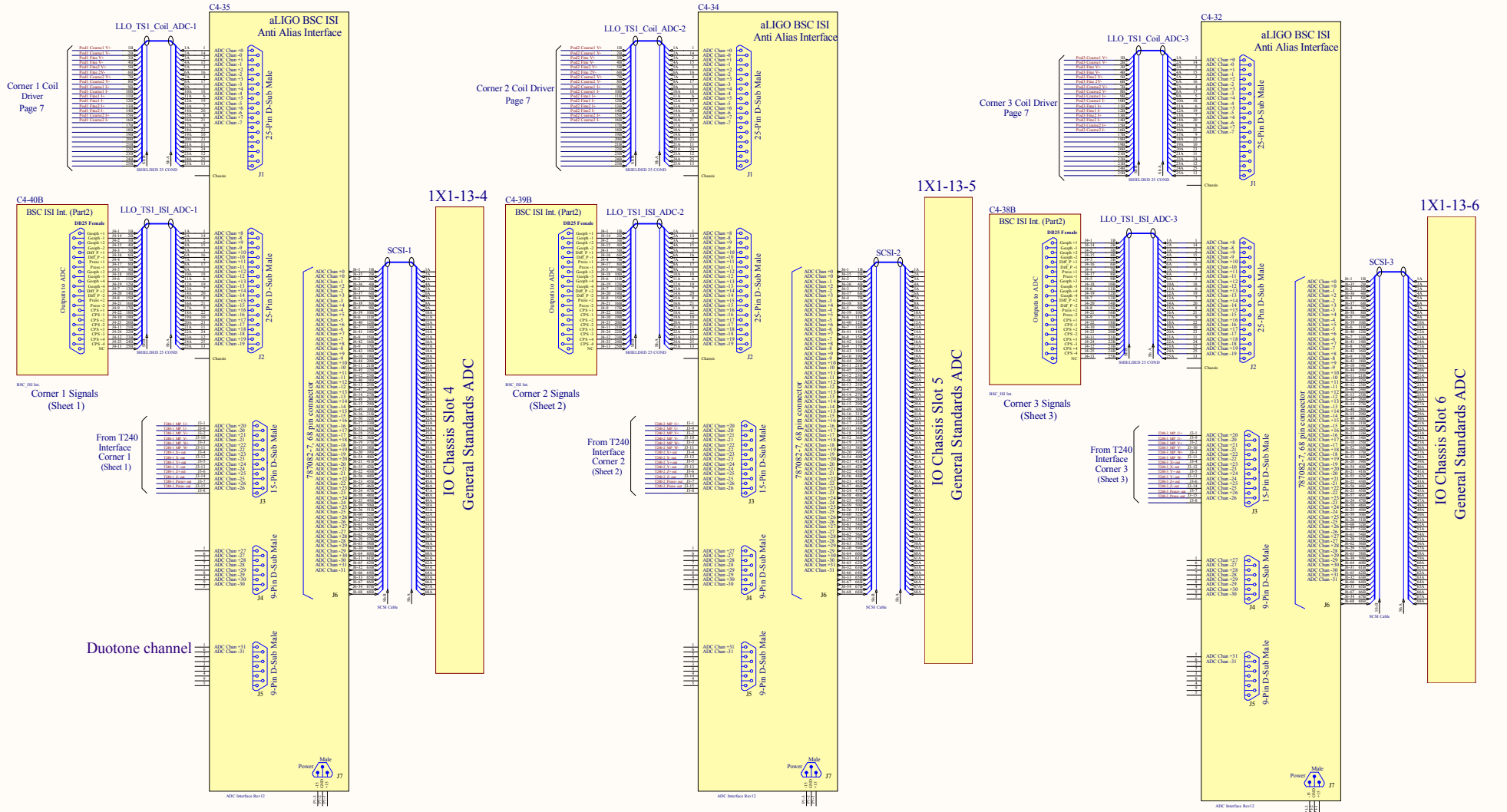


HAM & BSC Test Stand



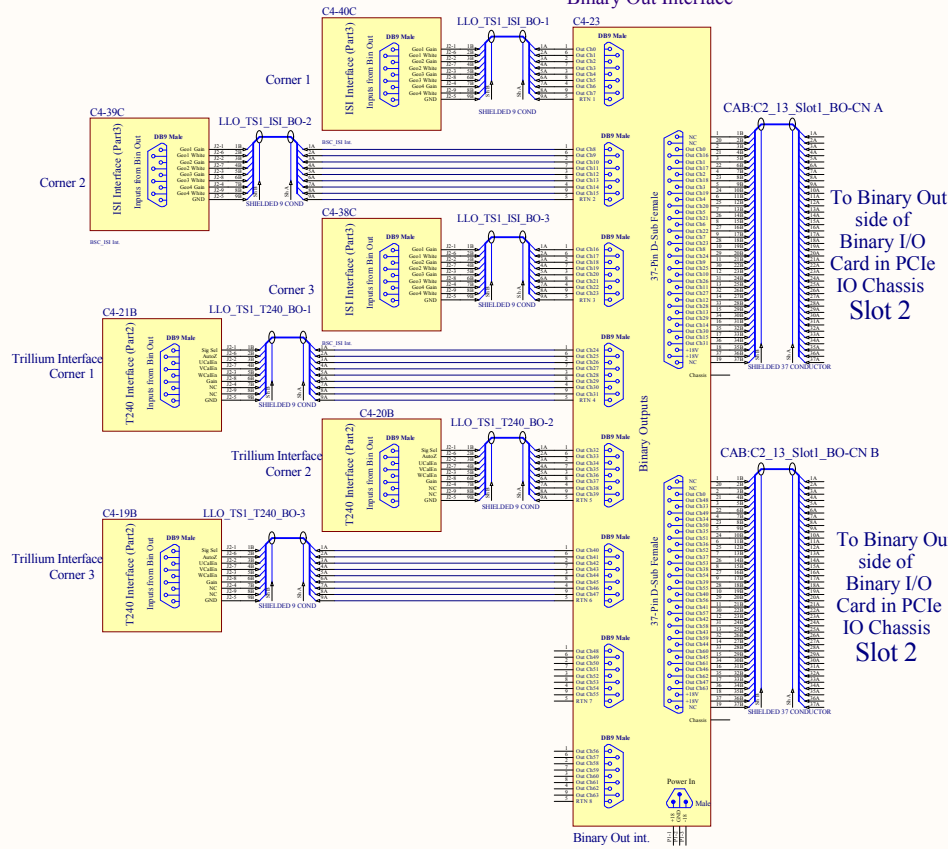
Title HAM ISI Test Stand System Wiring			
Size: B	DCC Number: D1001412	<i>Ligo Project</i> California Institute of Technology Massachusetts Institute of Technology	
Drawn by: Ben Abbott	Date: 11/3/2011	Revision: v5	Cannot open file C:\Ben\miscellan y\ligologo_1.jpg
File: C:\restored\Ben\Seismic\ISI\BSC\HAM\TestStand\AdL_SEI_TSS_SchDoc Time: 11:40:10 AM Sheet 6 of 6			

All shields on this page are tied to the Female Backshell only.



All cables on this page are off-the-shelf L-COM cables

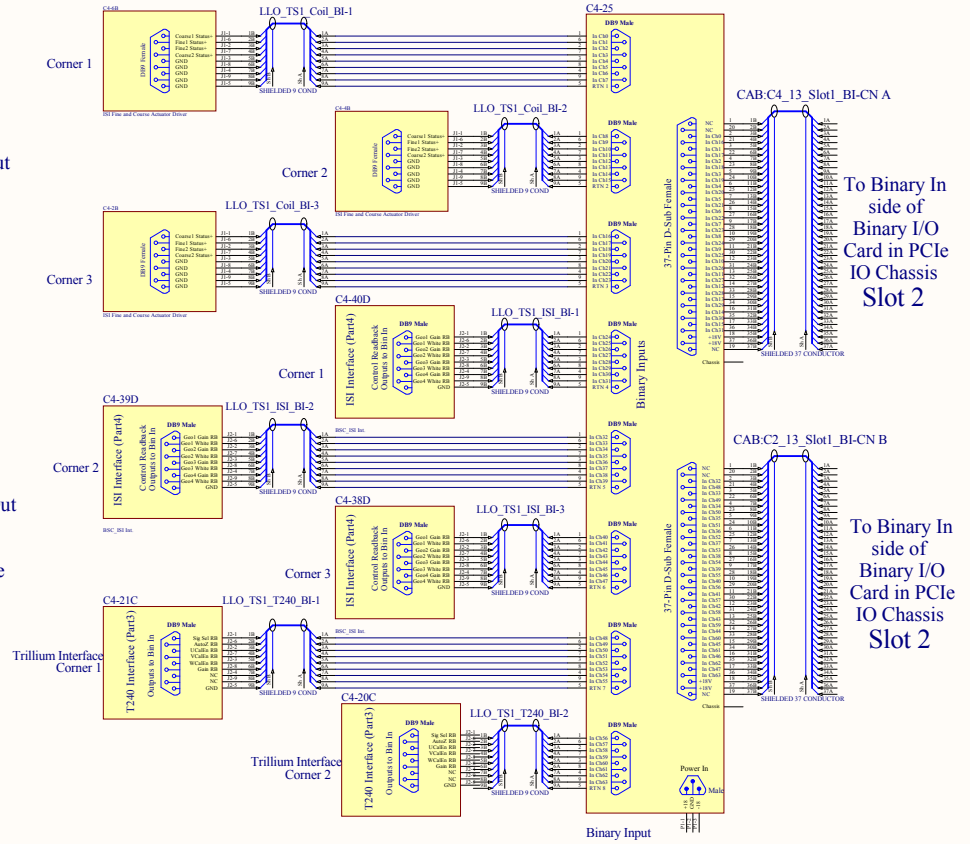
Binary Out Interface



To Binary Out side of Binary I/O Card in PCIe IO Chassis Slot 2

To Binary Out side of Binary I/O Card in PCIe IO Chassis Slot 2

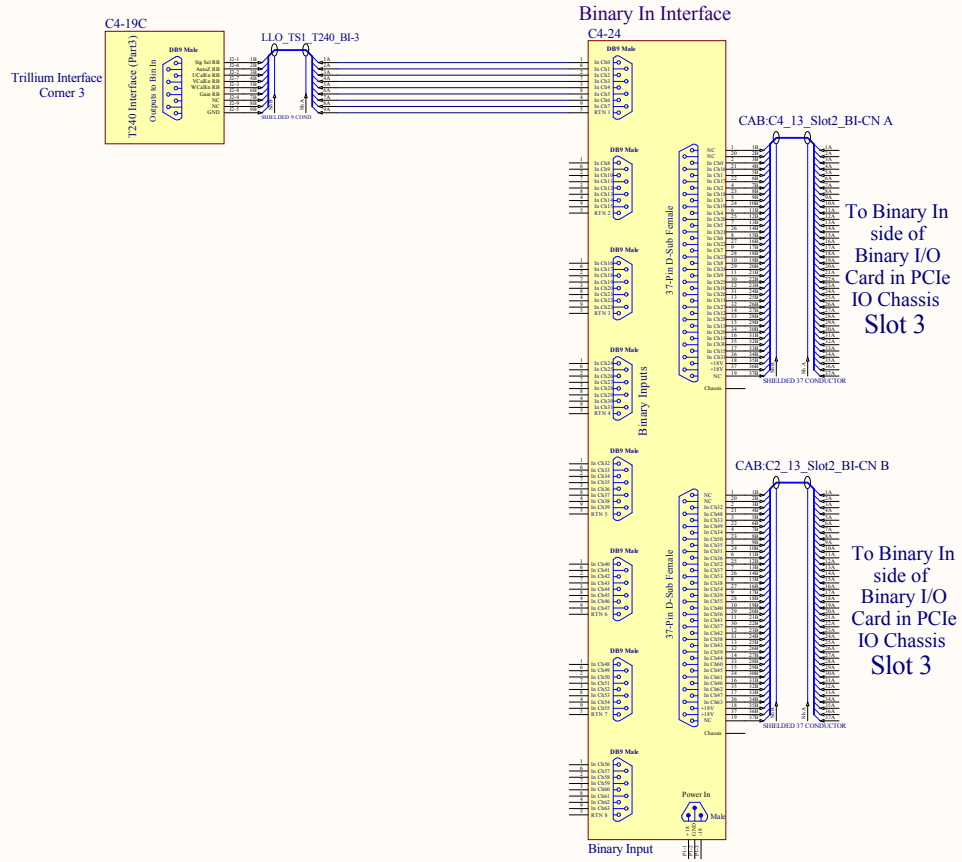
Binary In Interface

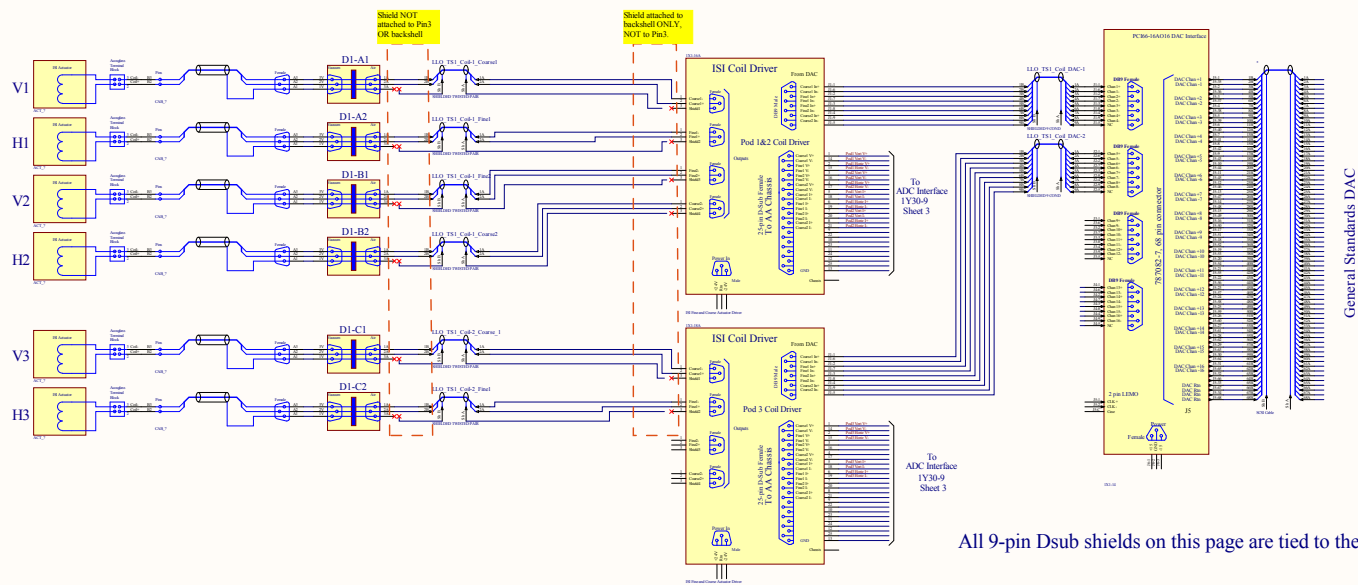


To Binary In side of Binary I/O Card in PCIe IO Chassis Slot 2

To Binary In side of Binary I/O Card in PCIe IO Chassis Slot 2

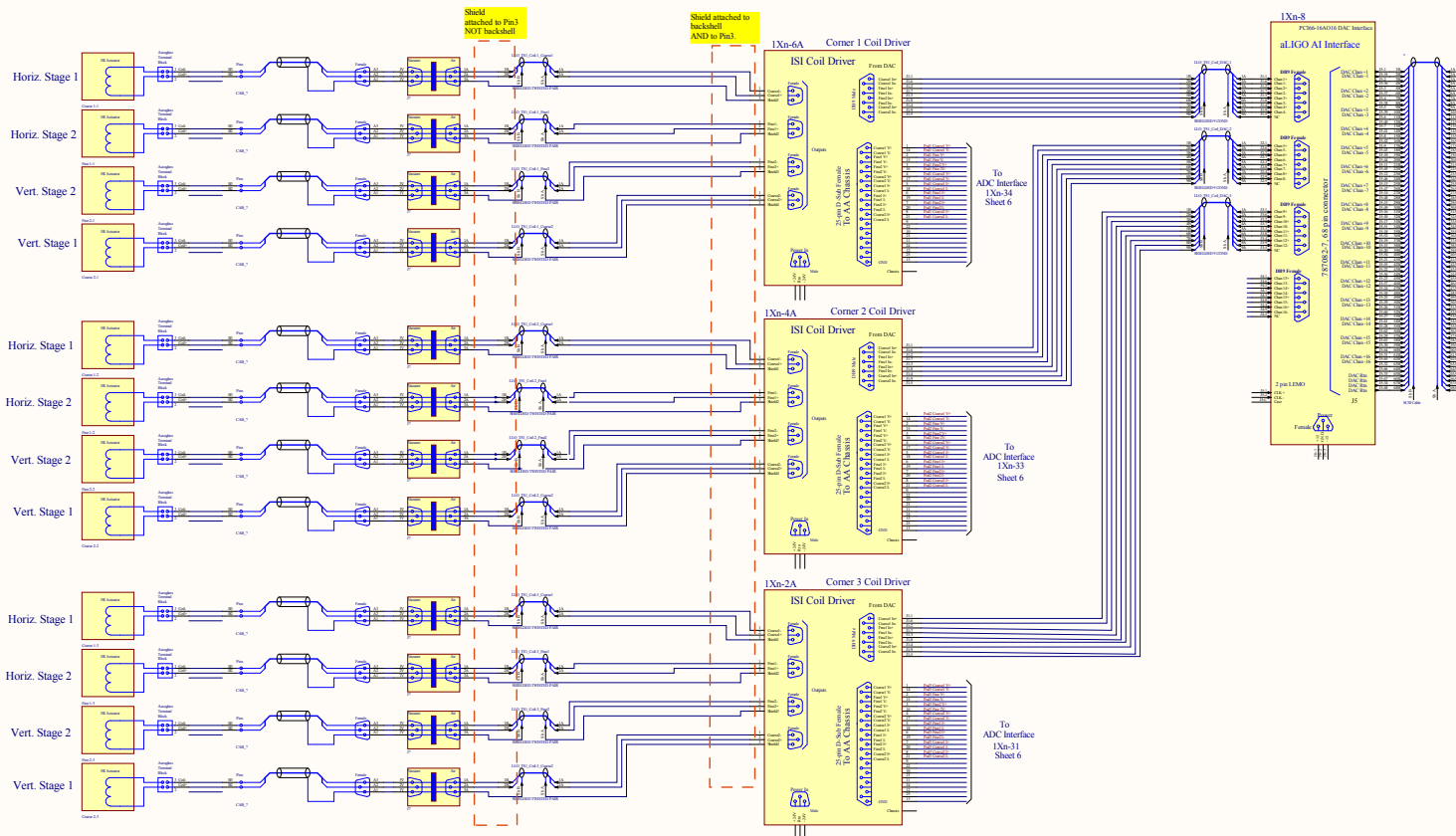
Off-the-shelf L-COM cables





HAM Coil Drivers

All 9-pin Dsub shields on this page are tied to the Male Backshell only.



BSC Coil Drivers