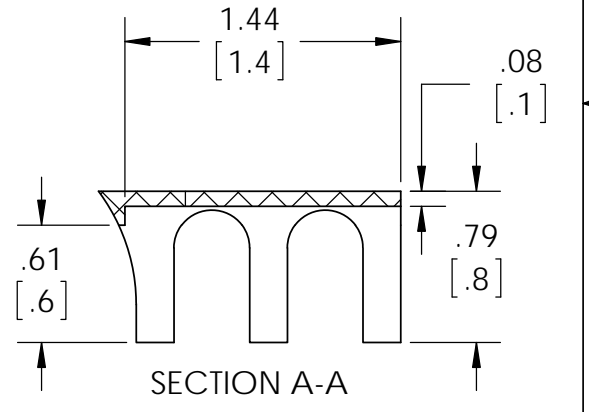
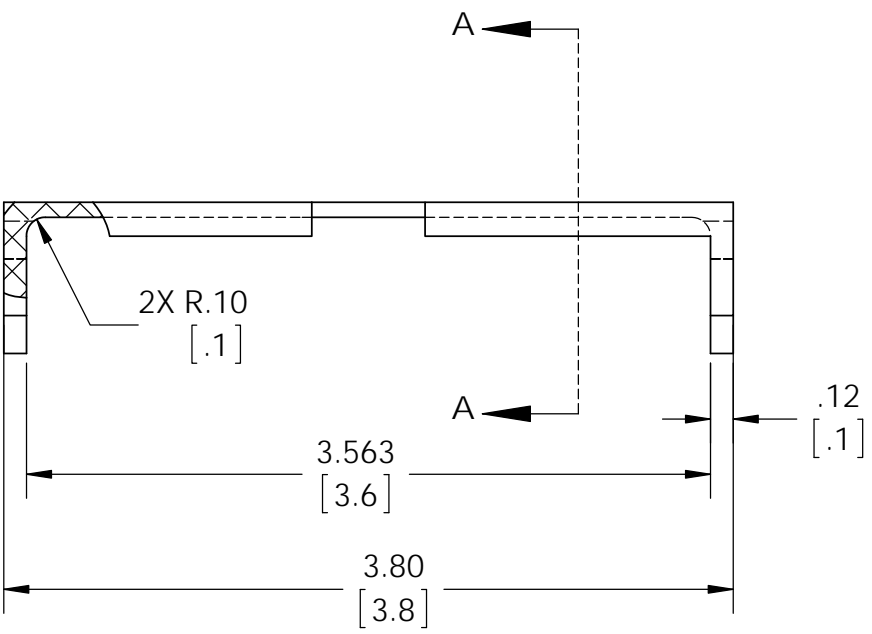
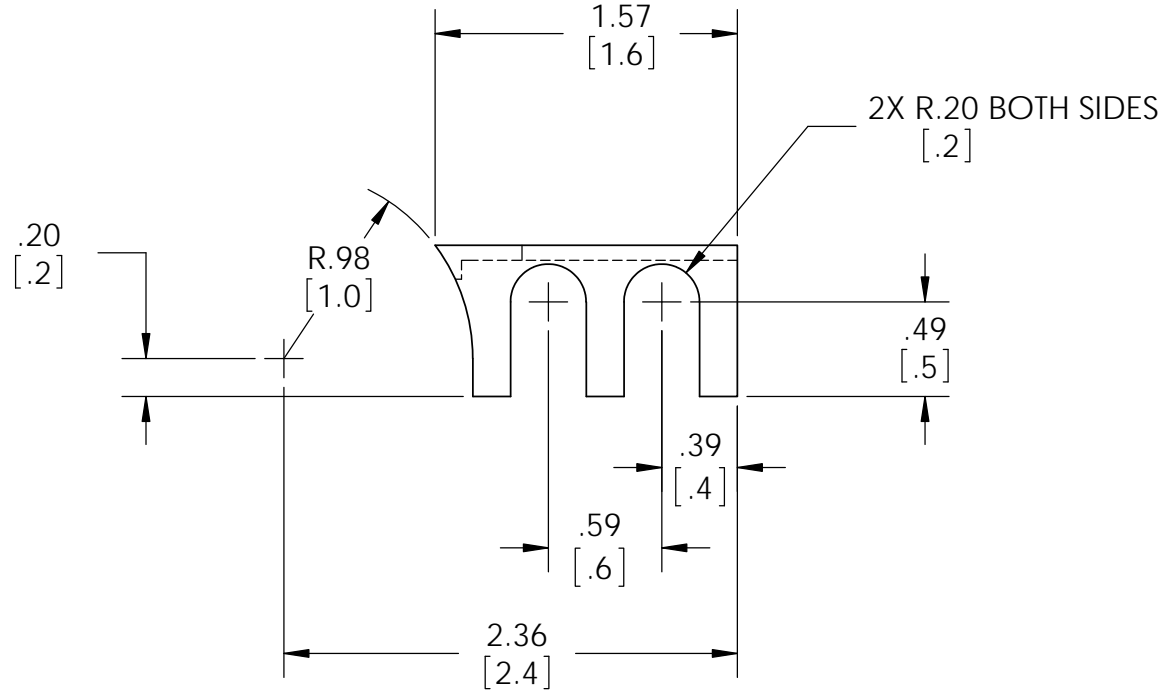
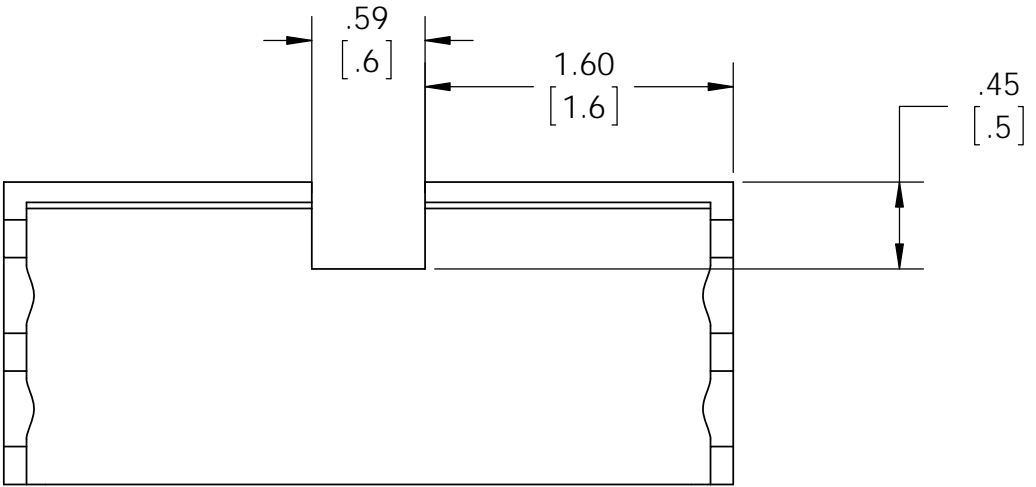


REV.	DATE	DCN #	DRAWING TREE #
v4	09 Feb 2012	E1200180	E1200181

NOTES CONTINUED:

4. ALL MACHINING FLUIDS MUST BE FULLY SYNTHETIC, FULLY WATER SOLUBLE AND FREE OF SULFUR, SILICONE AND CHLORINE.
5. SCRIBE, ENGRAVE, OR MECHANICALLY STAMP (NO INKS OR DYES) DRAWING PART NUMBER, REVISION (AND VARIANT OR "TYPE" IF APPLICABLE) ON NOTED SURFACE OF PART FOLLOWED ON THE NEXT LINE WITH A THREE DIGIT SERIAL NUMBER. SERIAL NUMBERS START AT 001 FOR THE FIRST ARTICLE AND PROCEED CONSECUTIVELY. USE MINIMUM 0.12 HIGH CHARACTERS, UNLESS THE SIZE OF THE PART DICTATES SMALLER CHARACTERS. A VIBRATORY TOOL MAY BE USED. EXAMPLE DXXXXXXX-VY, TYPE-XX, S/N XXX.
6. APPROXIMATE WEIGHT = 22.10 LB.
7. MACHINE ALL SURFACES TO REMOVE OXIDES AND MILL FINISH, USE OF ABRASIVE REMOVAL TECHNIQUES (INCLUDING SANDING OR SCOURING FOR MATTE FINISH) IS NOT ALLOWED. USE OF SCOTCH-BRITE OR SIMILAR PRODUCTS IS FORBIDDEN.
8. ALL PARTS SHALL BE MANUFACTURED IN ACCORDANCE WITH LIGO SPECIFICATION E0900364.
9. ALL MATERIAL IS TO BE VIRGIN MATERIAL (I.E. NOT WELD REPAIRS OR PLUGS) UNLESS APPROVED IN ADVANCE AND IN WRITING BY LIGO, REFER TO LIGO-E0900364.
10. NO REPAIRS SHALL BE MADE UNLESS APPROVED IN ADVANCE, AND IN WRITING, BY LIGO LABORATORY. IN GENERAL WELD REPAIRS AND PRESS FIT INSERT REPAIRS ARE NEVER ACCEPTABLE. THE MATERIAL USED MUST BE VIRGIN MATERIAL. SPECIAL CIRCUMSTANCES CAN BE REVIEWED IF AND WHEN BROUGHT TO THE ATTENTION OF LIGO CONTRACTING OFFICER'S REPRESENTATIVE (COTR) THROUGH THE MATERIAL REVIEW BOARD (MRB) PROCESS, REFER TO LIGO-E09000364.



D1102152_fibre_guard_PTFE_awning, PART PDM REV: X-002, DRAWING PDM REV: X-001

NOTES AND TOLERANCES: (UNLESS OTHERWISE SPECIFIED)		LIGO CALIFORNIA INSTITUTE OF TECHNOLOGY MASSACHUSETTS INSTITUTE OF TECHNOLOGY		PART NAME	
DIMENSIONS ARE IN INCHES [MM]		ADVANCED LIGO SUS		aLIGO SUS, FIBRE GUARD PTFE AWNING	
TOLERANCES: .XX ± .015 .XXX ± .005		NEXT ASSY D1102306 D1102307		DESIGNER L. CUNNINGHAM 03 Nov 2011	SIZE DWG. NO. B D1102152
ANGULAR ± .5°		MATERIAL PTFE (general) FINISH 63 μinch		DRAFTER L. CUNNINGHAM 04 Nov 2011	REV. v4
1. INTERPRET DRAWING PER ASME Y14.5-1994.				CHECKER J. ROMIE 09 Feb 2012	SCALE: 1:1
2. REMOVE ALL SHARP EDGES, .03 x 45°.				APPROVAL C. TORRIE 09 Feb 2012	PROJECTION:
3. DO NOT SCALE FROM DRAWING.					SHEET 1 OF 1