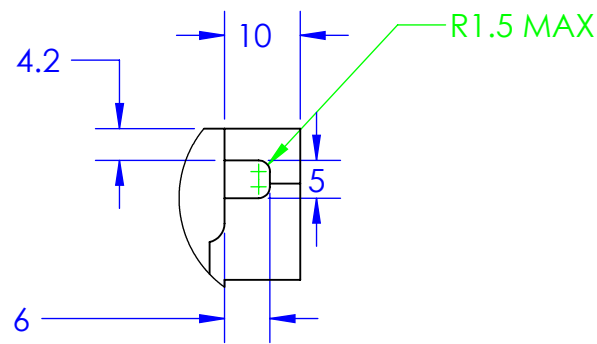


NOTES CONTINUED:
 ⑤ SCRIBE, ENGRAVE, OR MECHANICALLY STAMP (NO INKS OR DYES) DRAWING PART NUMBER AND REVISION ON NOTED SURFACE FOLLOWED ON THE NEXT LINE BY A THREE DIGIT SERIAL NUMBER. SERIAL NUMBERS START AT 001 FOR THE FIRST ARTICLE AND PROCEED CONSECUTIVELY. USE .07" HIGH CHARACTERS. EXAMPLE: DXXXXXX-VY, S/N 001. A VIBRATORY TOOL MAY BE USED.

⑥ MACHINE ALL SURFACES.

⑦ USE ONLY NITRONIC 60 HELICOILS

REV.	DATE	DCN #	DRAWING TREE #

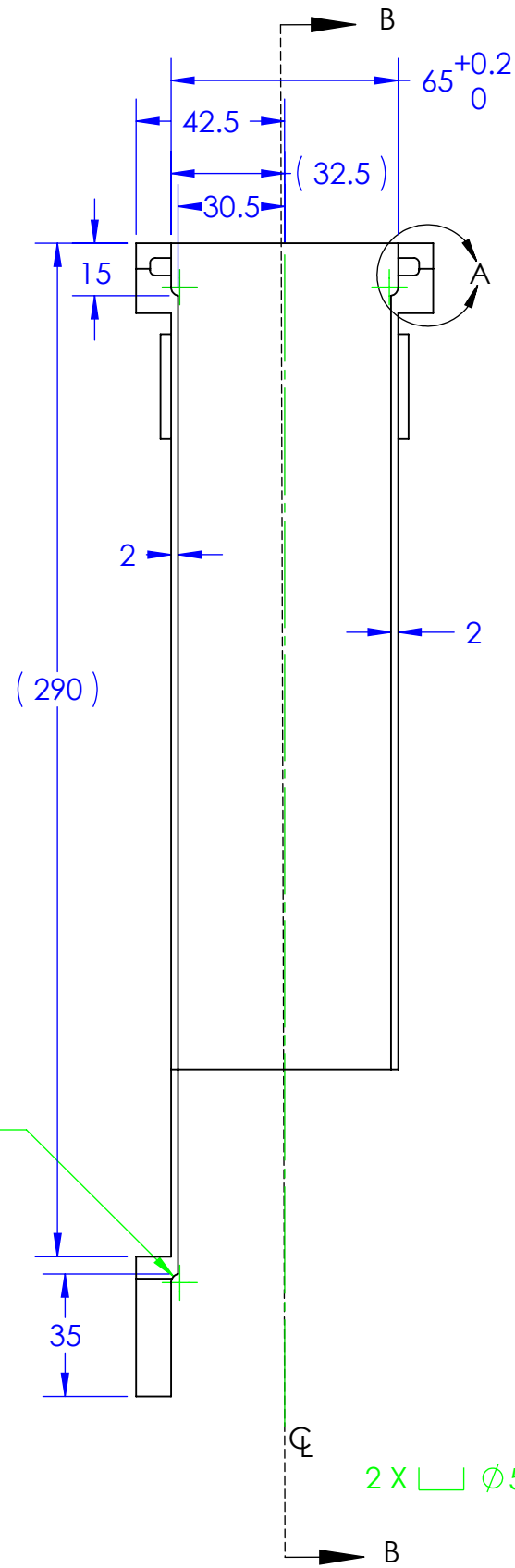


SLOT CUT FOR THREADED PART OF CAPTIVE SCREW

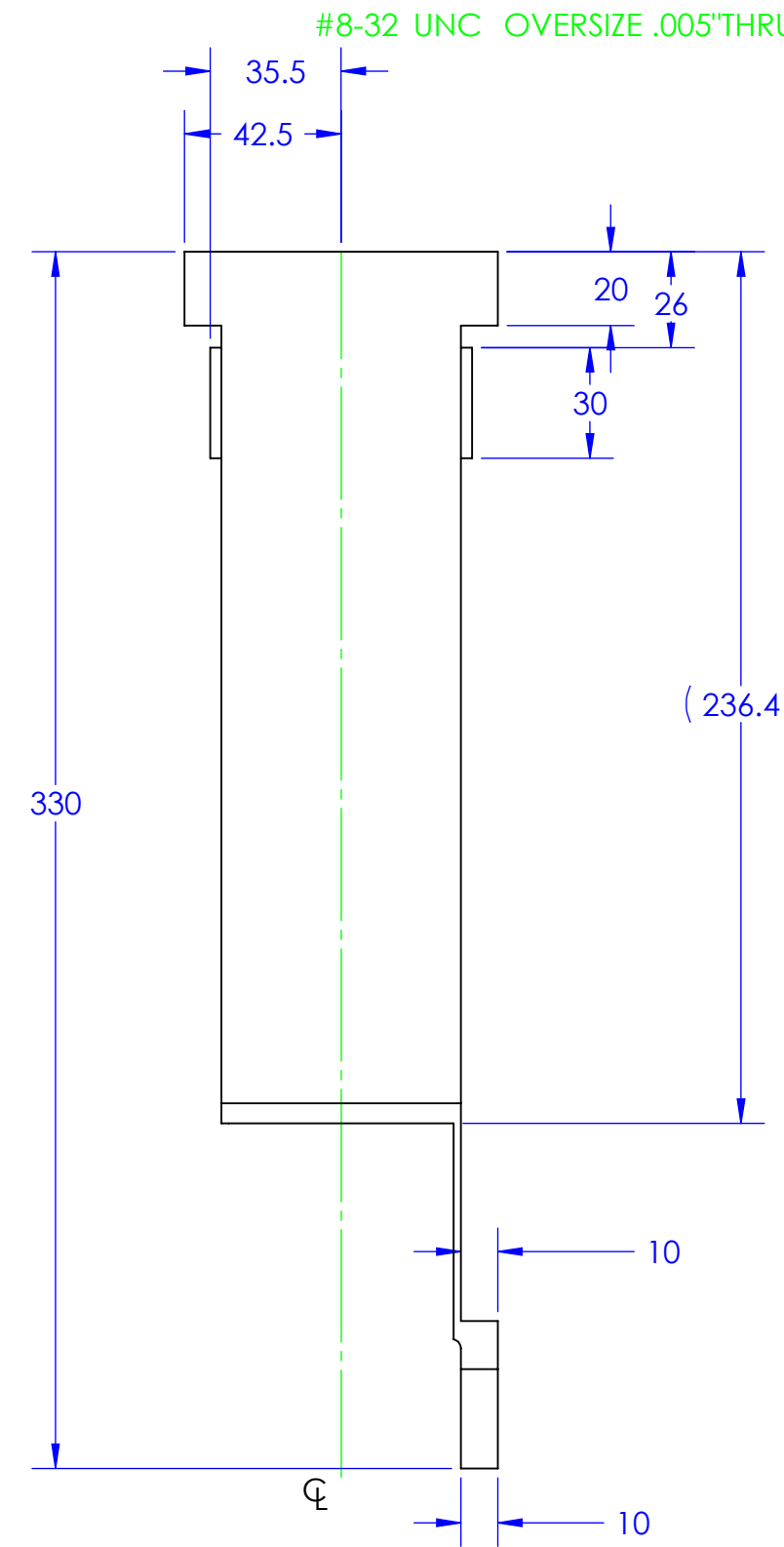
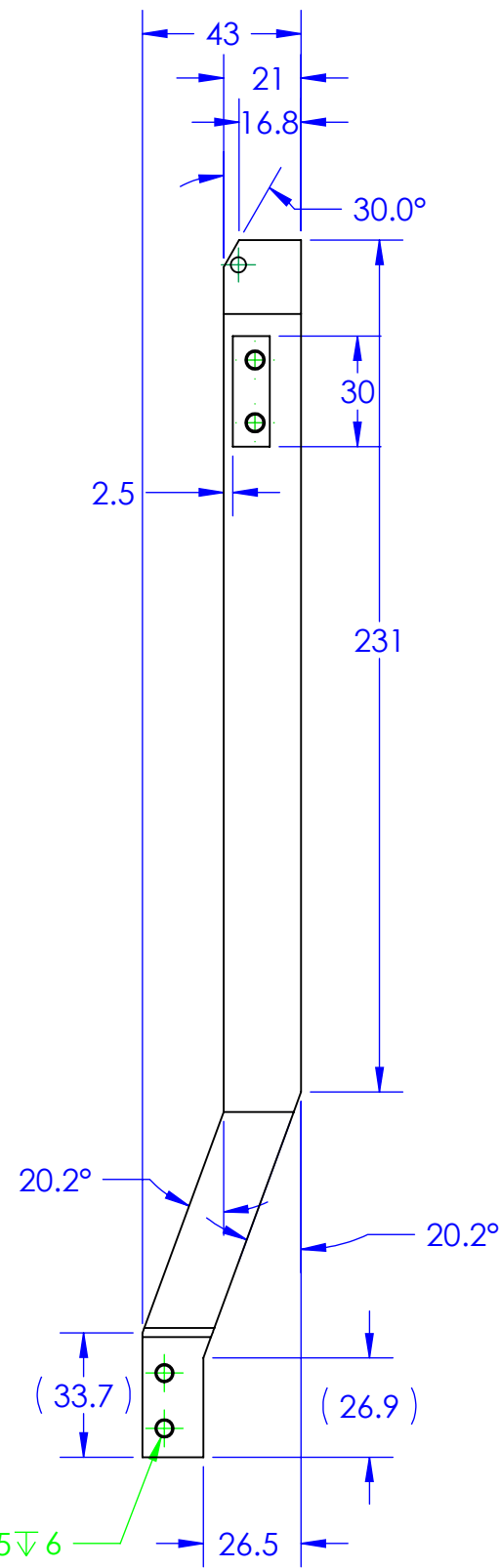


DETAIL B SCALE 1:1

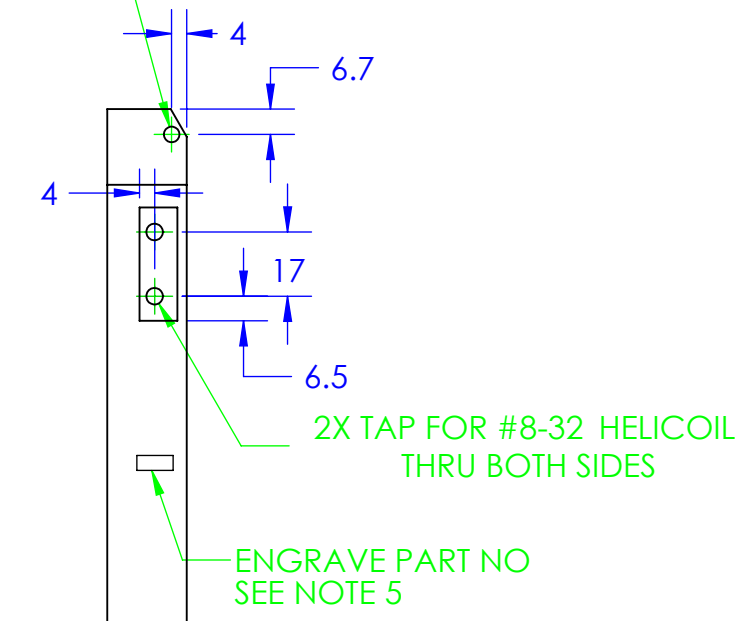
2X SLOTS 7.5 CUT AS SHOWN FOR CAPTIVE SCREWS



SECTION B-B



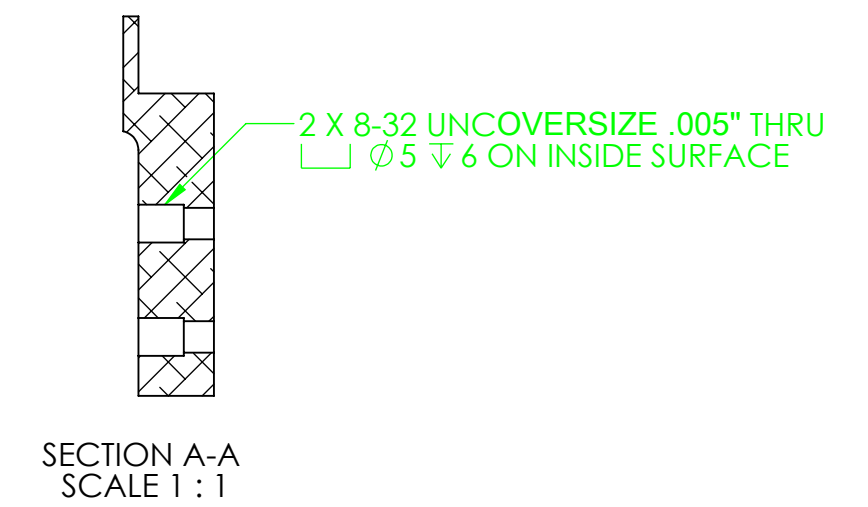
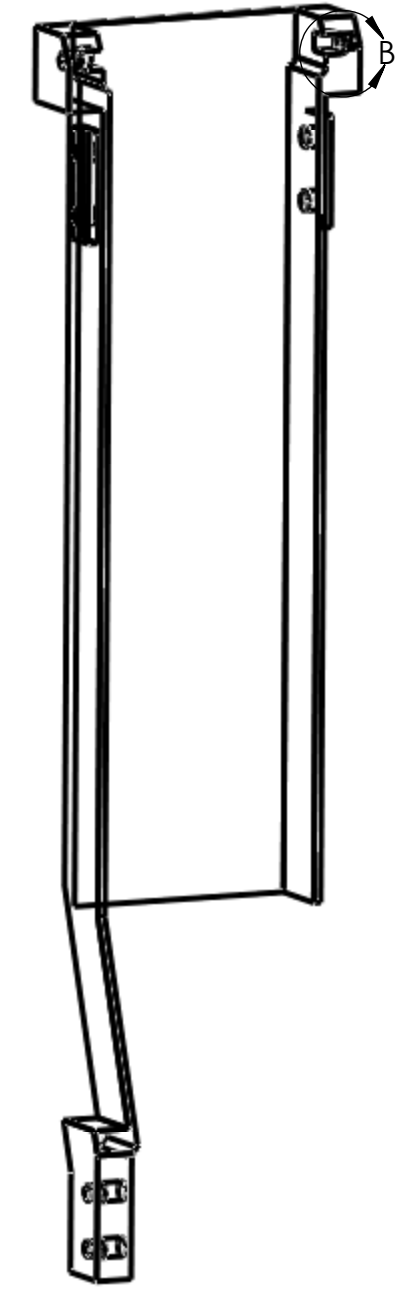
#8-32 UNC OVERSIZE .005" THRU ALL



2X TAP FOR #8-32 HELICOIL THRU BOTH SIDES

ENGRAVE PART NO SEE NOTE 5

2X #8-32 UNC OVERSIZE .005" THRU



SECTION A-A SCALE 1:1

NOTES AND TOLERANCES: (UNLESS OTHERWISE SPECIFIED)

1. INTERPRET DRAWING PER ASME Y14.5-1994.
2. REMOVE ALL SHARP EDGES, R.5 MIN.
3. DO NOT SCALE FROM DRAWING.
4. ALL MACHINING FLUIDS MUST BE FULLY SYNTHETIC, FULLY WATER SOLUBLE AND FREE OF SULFUR, SILICONE, AND CHLORINE.

MATERIAL 6061-T6 Al

FINISH 1.6 µm



SYSTEM ADVANCED LIGO SUB-SYSTEM SUS

NEXT ASSY

PART NAME fibre guard internal section left side

DESIGNER	L.CUNNINGHAM	02/11/11	SIZE	DWG. NO.	REV.
DRAFTER	L.Cunningham	03/11/11	c	D1102149	v5
CHECKER	R.JONES	14/11/11			
APPROVAL			SCALE: 1:2	PROJECTION:	SHEET 1 OF 1