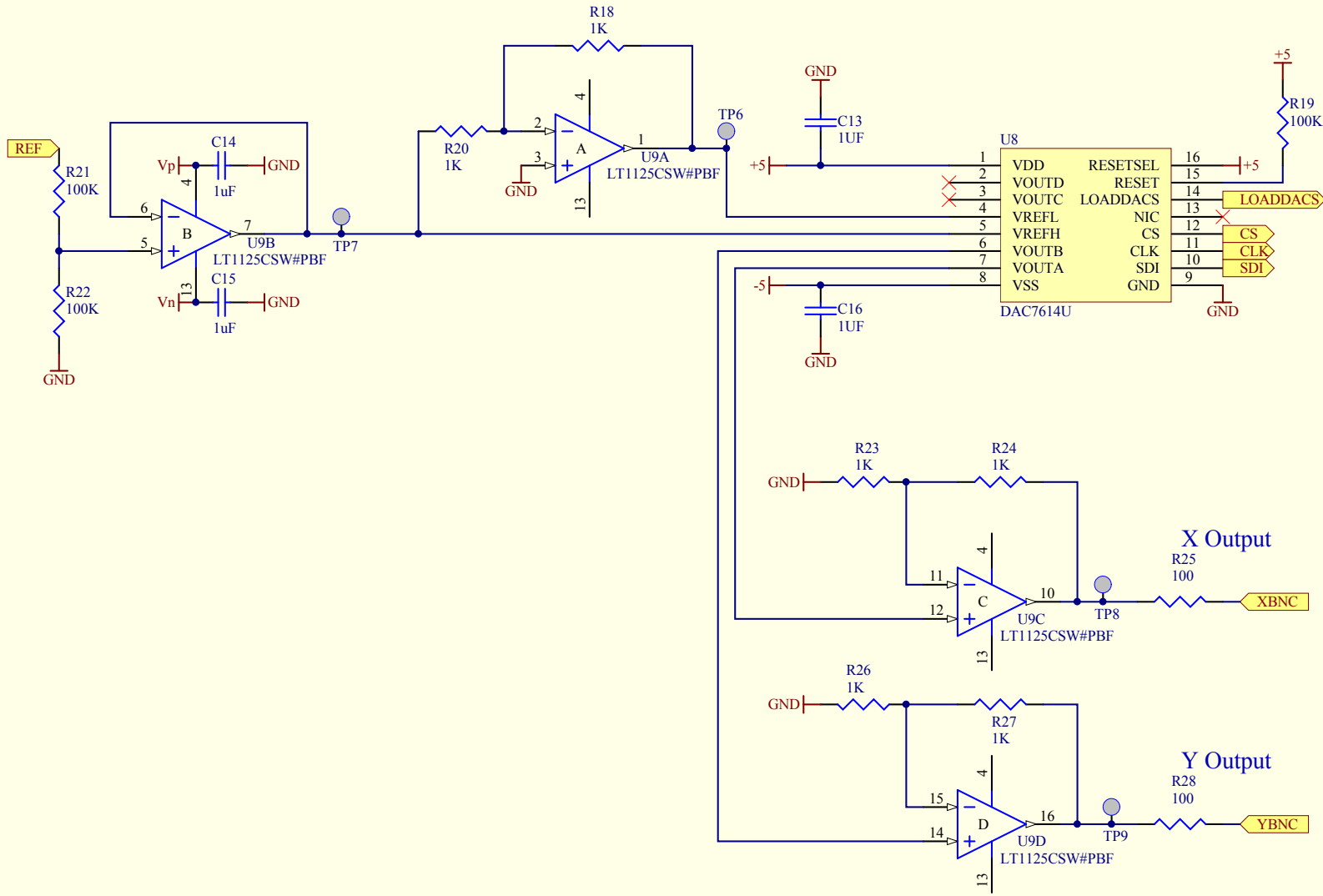
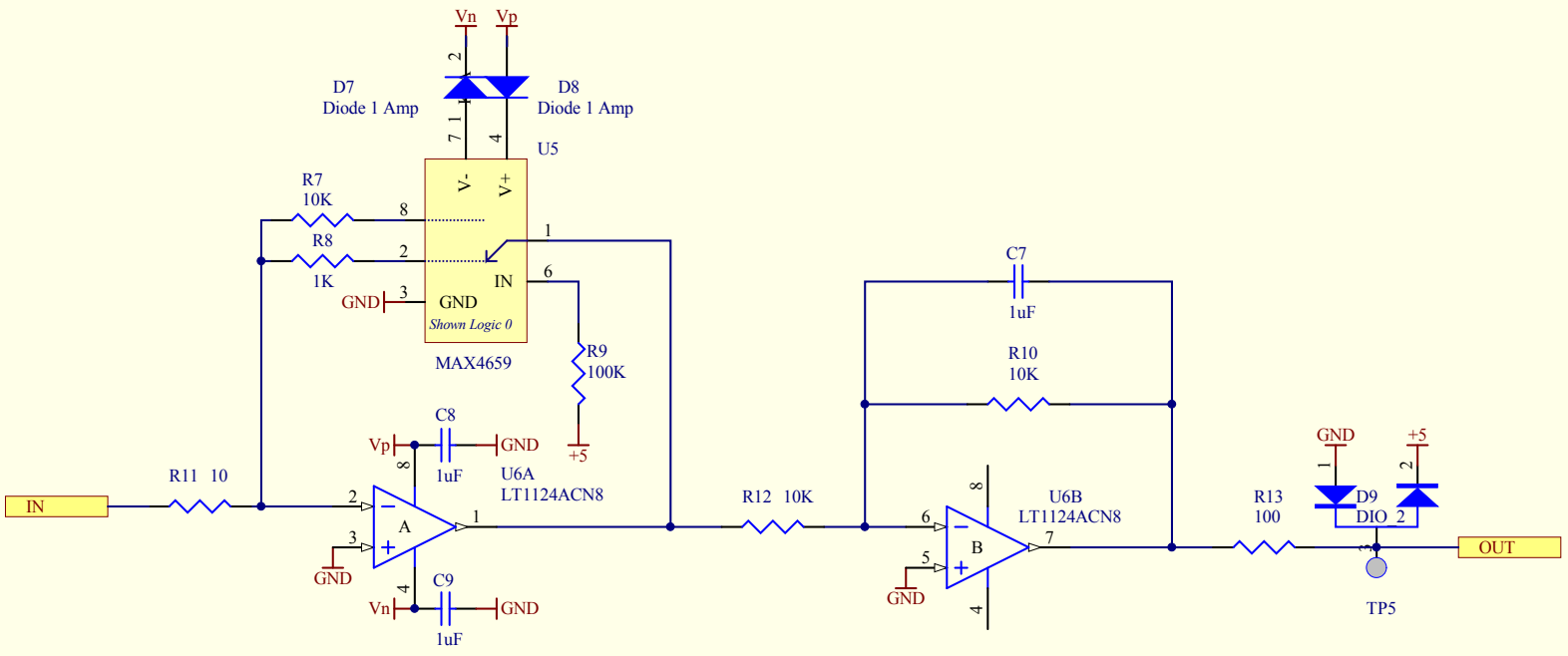



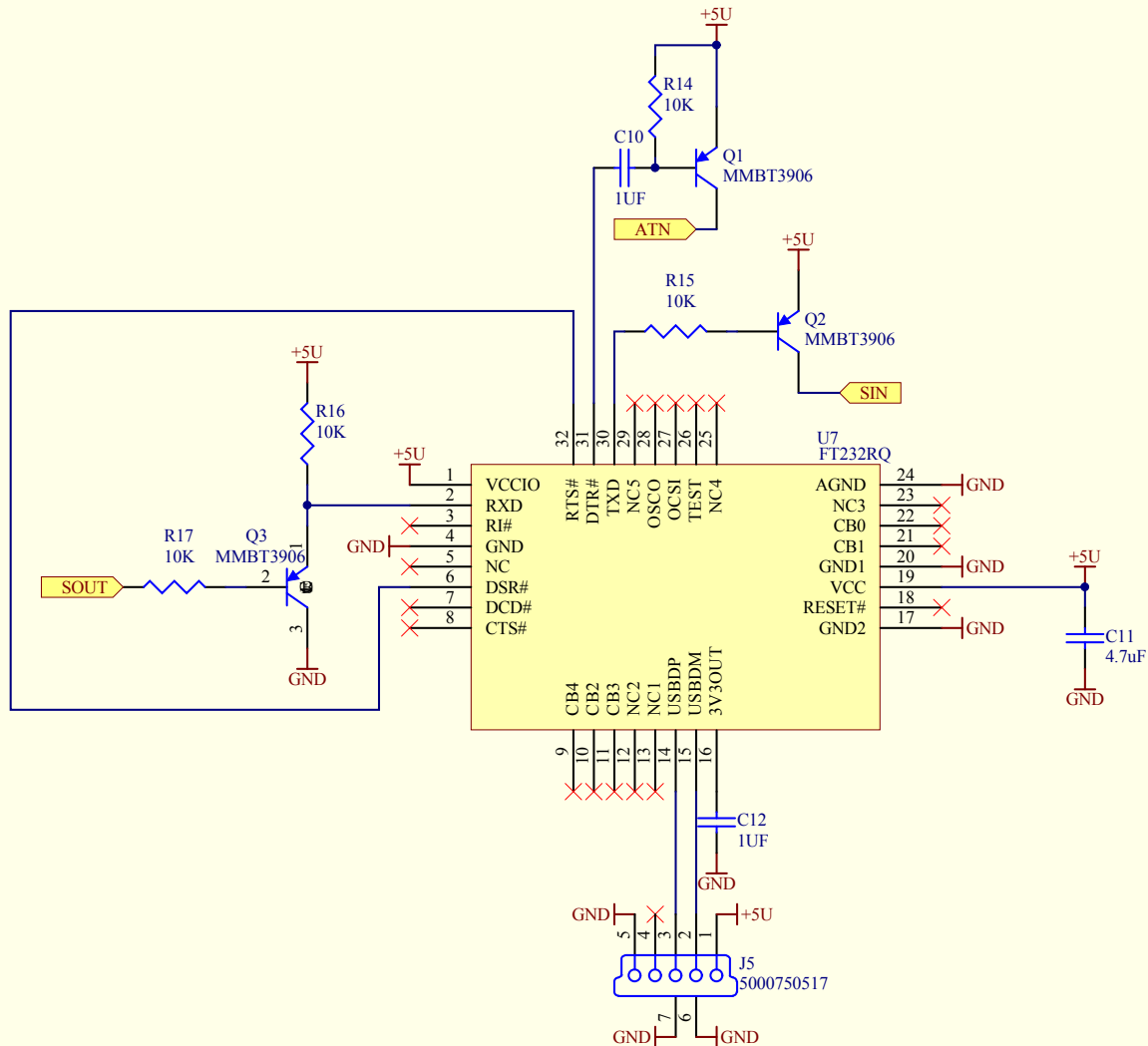
Title QPD LCD Readout		LIGO Project California Institute of Technology Massachusetts Institute of Technology		LIGO	
Size: B	DCC Number: D1102092	SCH / PCB Revision: V1	Engineer: S. Abbott	Date: 10/27/2011	Time: 2:26:10 PM
File: C:\Documents and Settings\sabbott\My Documents\My Designs\QPD LCD Readout\QPD LCD Readout.SchDoc				Sheet * of *	



Title <i>QPD Readout DAC Interface</i>				* * *		LIGO [®]	
Size: A	DCC Number: D1102092	SCH / PCB Revision: V1	Engineer:		Date: 10/27/2011		
File: C:\Documents and Settings\sabbott\My Documents\My Designs\QPD LCD Readout\DAC Interface.SchDoc						Time: 2:26:09 PM	
						Sheet * of *	



Title			* * *		
Size: A	DCC Number: D1102092	SCH / PCB Revision: V1	* Engineer:		
File: C:\Documents and Settings\sabbott\My Documents\My Designs\QPD LCD Readout\QPD READOUT CH.SchDoc				Date: 10/27/2011 Time: 2:26:10 PM	
				Sheet * of *	



Mini USB Programming Interface

Title			* * *		
QPD Readout USB Interface					
Size: A	DCC Number: D1102092	SCH / PCB Revision: V1	Engineer:	Date: 10/27/2011	
File: C:\Documents and Settings\sabbott\My Documents\My Designs\QPD LCD Readoutusb interface.SchDoc					Time: 2:26:10 PM
					Sheet * of *

