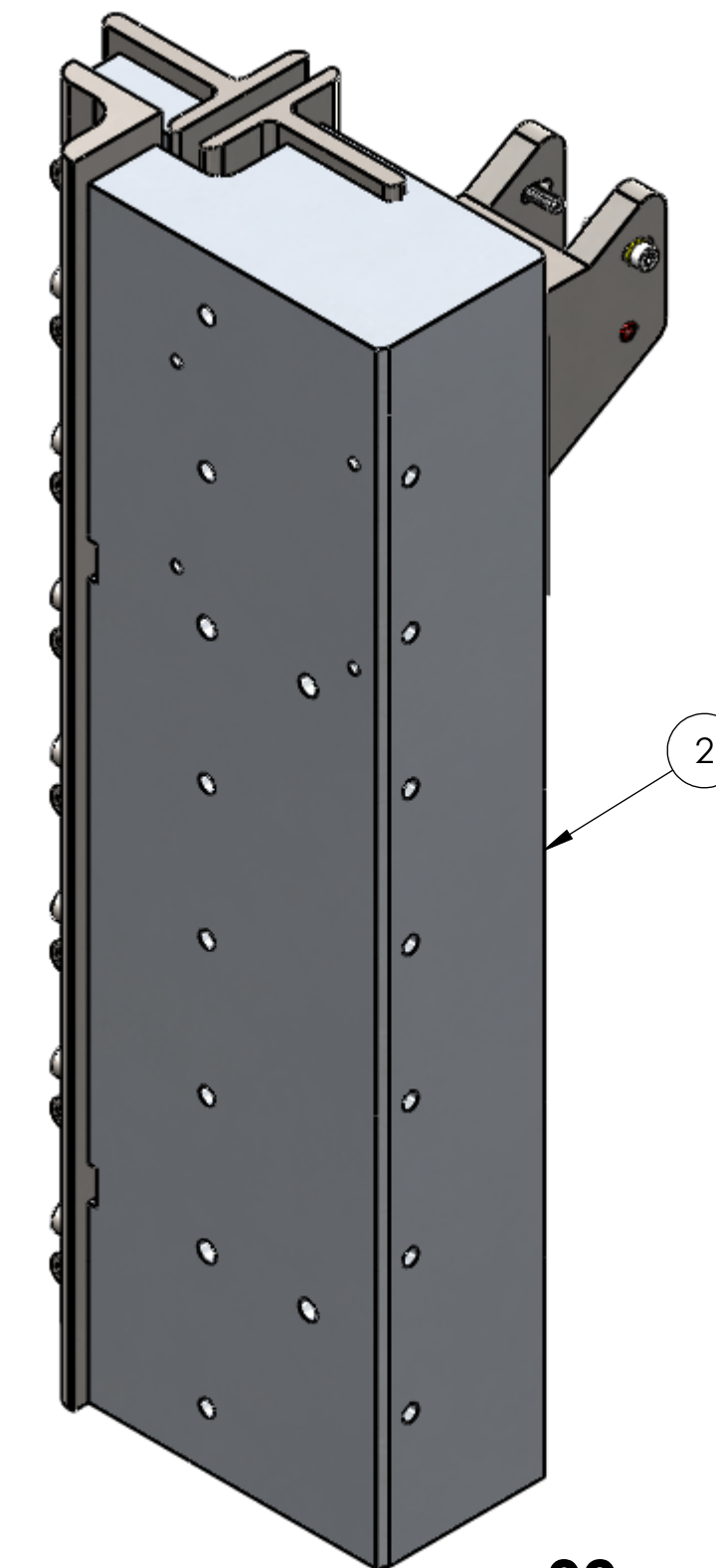
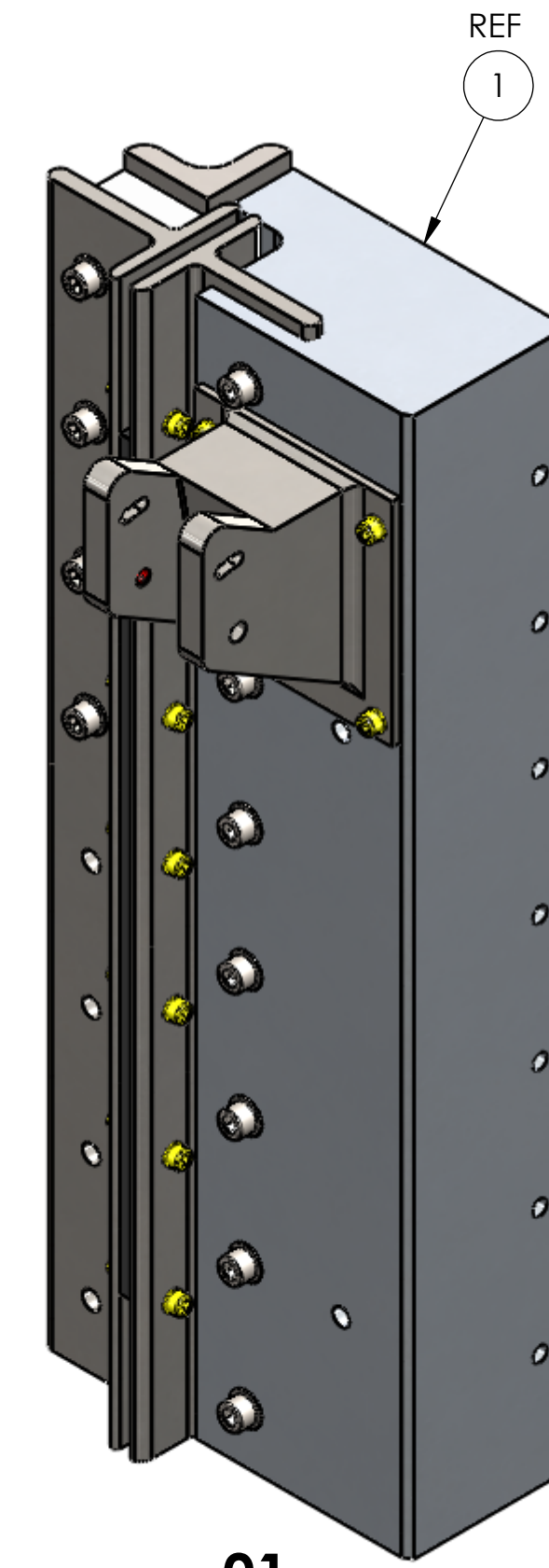
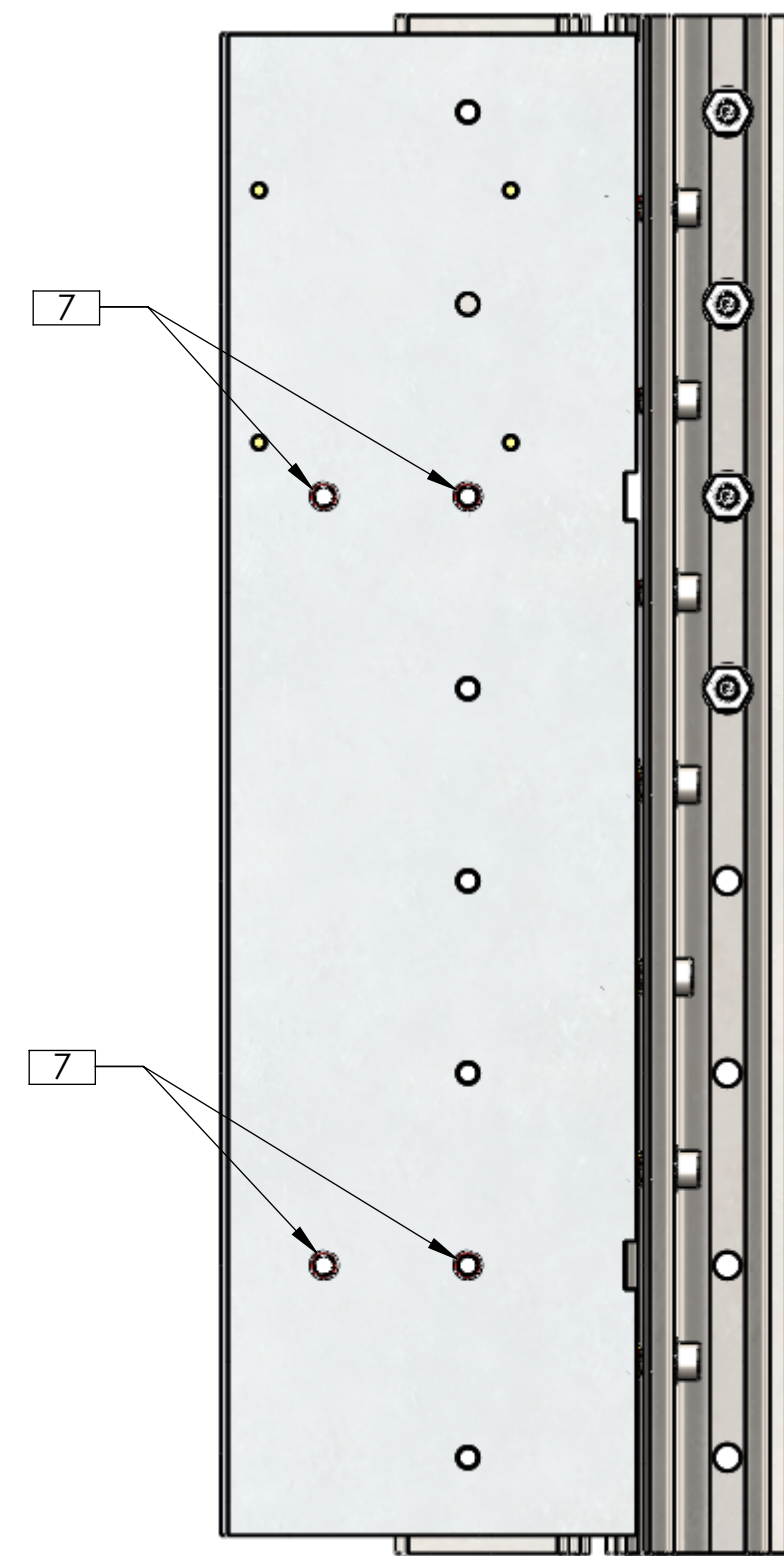
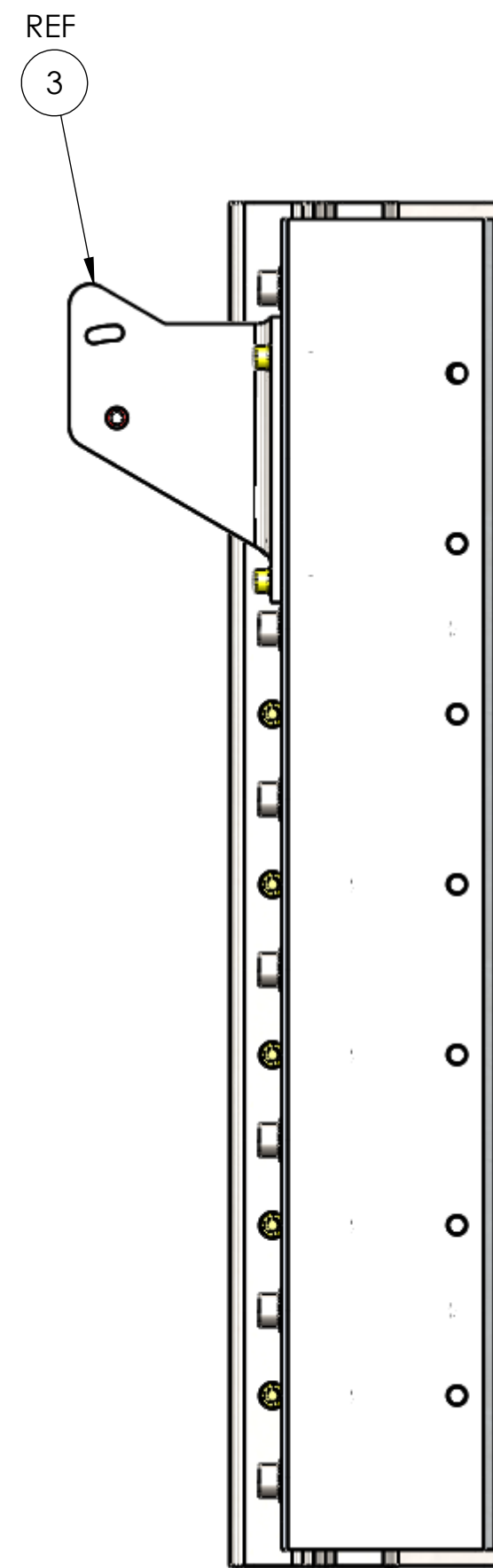
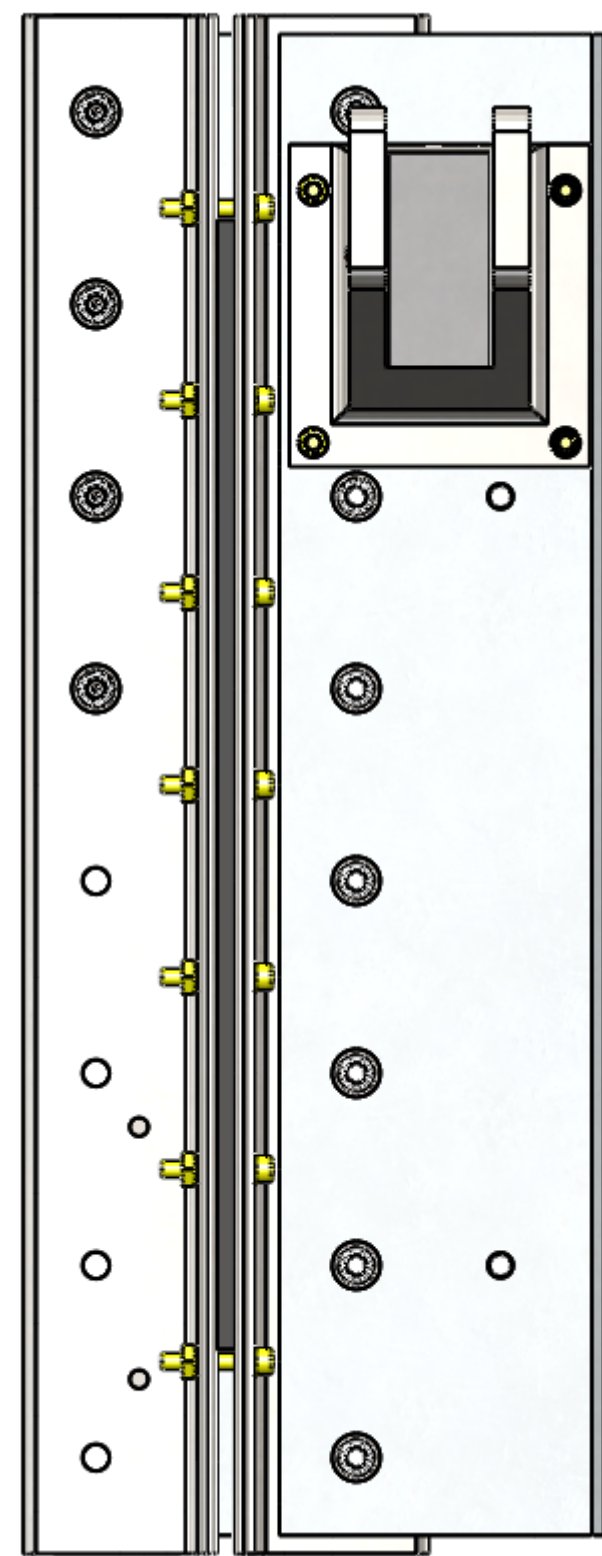
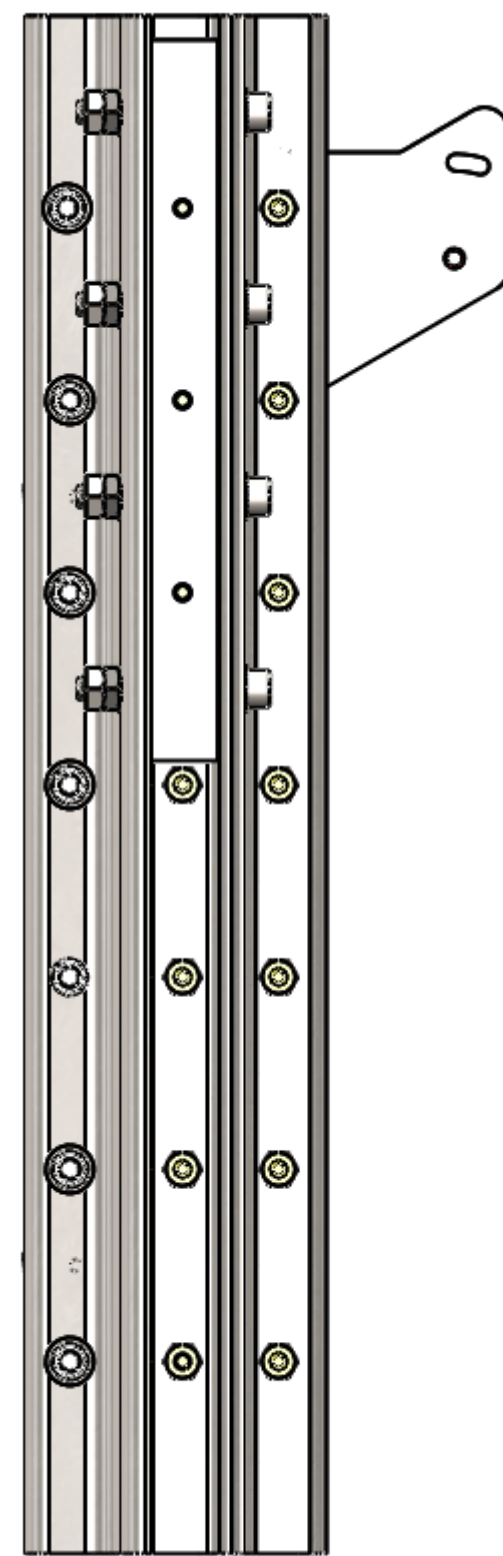
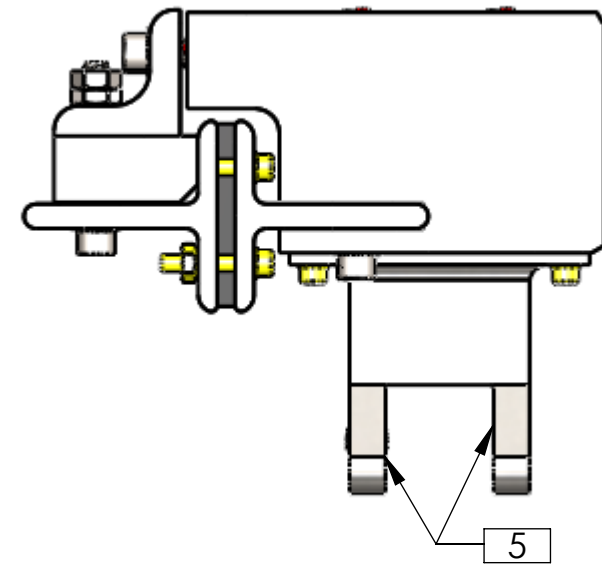


NOTES CONTINUED:

- 5 INTERFACE TO ASSY D1102029
- 6 FOR MOUNTING TO BSC FLANGE
- 7 INTERFACE TO ASSY D1102088
- 8 #8-32 TORQUE TO 20 in-lb, MAX
- 9 1/4-20 TORQUE TO 65 in-lb, MAX

REV.	DATE	DCN #	DRAWING TREE #
v1	01-MAR-2012	E1101043-v1	E1101044-v1
v2	17-OCT-2012	E1200916-v1	E1200917-v1



ITEM NO.	NUMBER	DESCRIPTION	MATERIAL	D1102078-01/QTY.	D1102078-02/QT	SPARE	TOTAL
18	D1201406	DAMPING SPACER, LONG	Rubber	1	1	0	2
17	C-814-N	SCREW, SOCKET HEAD CAP, #8-32 UNC-2A X 1 LONG, FULLY THREADED	300 SSSL	14	14	6	40
16	C-2018-N	SSHC, 1/4-20 UNC-3A X 1-1/8 Lg. UC-COMPONENTS	18-8 SSSL	7	7	1	16
15	C-2012-N	SSHC, 1/4-20 UNC-3A X 3/4 Lg. UC-COMPONENTS	18-8 SSSL	7	7	1	16
14	N-832	HEX NUT, #8-32	18-8 SSSL	11	11	4	30
13	C-814-N	SCREW, SOCKET HEAD CAP, #8-32 UNC-2A X 0.875 LG. UC-COMPONENTS	18-8 SSSL	2	2	2	8
12	C-808-N	SCREW, SOCKET HEAD CAP, #8-32 UNC-2A X 0.5 LG. UC-COMPONENTS	18-8 SSSL	2	2	2	8
11	C-2028-N	SHSC 1/4-20 UNC-3A X 1-3/4 UC COMPONENTS	18-8 SSSL	4	4	1	10
10	WF-25-A	WASHER, FLAT, .261D X .470D X .032TK. UC COMPONENTS	18-8 SSSL Ag FLTD	22	22	3	50
9	NJ-2520	HEX JAM NUT, 1/4-20. UC-COMPONENTS	18-8 SSSL	4	4	1	10
8	N-2520-A	NUT, HEX, 1/4-20 UNC-2B. UC COMPONENTS	18-8 SSSL	4	4	1	10
7	WFV-08-A	WASHER, FLAT, #8, .169 ID, .304 OD, .032 THK, VENTED. UC-COMPONENTS	18-8 SSSL Ag FLTD	29	29	6	70
6	D1101438	STANDARD ANGLE SECTION, SS 316, 1.25 X 1.25 X .25	AISI 316 SSSL	1	1	0	2
5	D1101287-01	STANDARD T. SS 304, 2 X 2 X .25	AISI 304	2	2	0	4
4	D1101437	ALIGO TCS SM1 H1-L1 STRONG BACK	6061 Alloy	1	1	0	2
3	D1101292	H1-L1 SM1 AZ SUPPORT BRKT	AISI 304	1	1	0	2
2	D1101291-02	H1-L1 STEER M1 BRACKET	6061-Alloy	-	1	0	1
1	D1101291-01	H1-L1 STEER M1 BRACKET	6061 Alloy	1	-	0	1

NOTES AND TOLERANCES: (UNLESS OTHERWISE SPECIFIED)	
1. INTERPRET DRAWING PER ASME Y14.5-1994.	
2. REMOVE ALL SHARP EDGES, .005-.015. FOR MACHINED PARTS. ROUND ALL EDGES APPROXIMATELY R.02 FOR SHEET METAL PARTS.	
3. DO NOT SCALE FROM DRAWING.	
4. ALL MACHINING FLUIDS MUST BE FULLY SYNTHETIC, FULLY WATER SOLUBLE AND FREE OF SULFUR, SILICONE, AND CHLORINE.	
DIMENSIONS ARE IN INCHES	
TOLERANCES:	
.XX ± .01	
.XXX ± .005	
ANGULAR ± 1.0°	
MATERIAL	N/A
FINISH	N/A μinch

**CALIFORNIA INSTITUTE OF TECHNOLOGY**  
**MASSACHUSETTS INSTITUTE OF TECHNOLOGY**

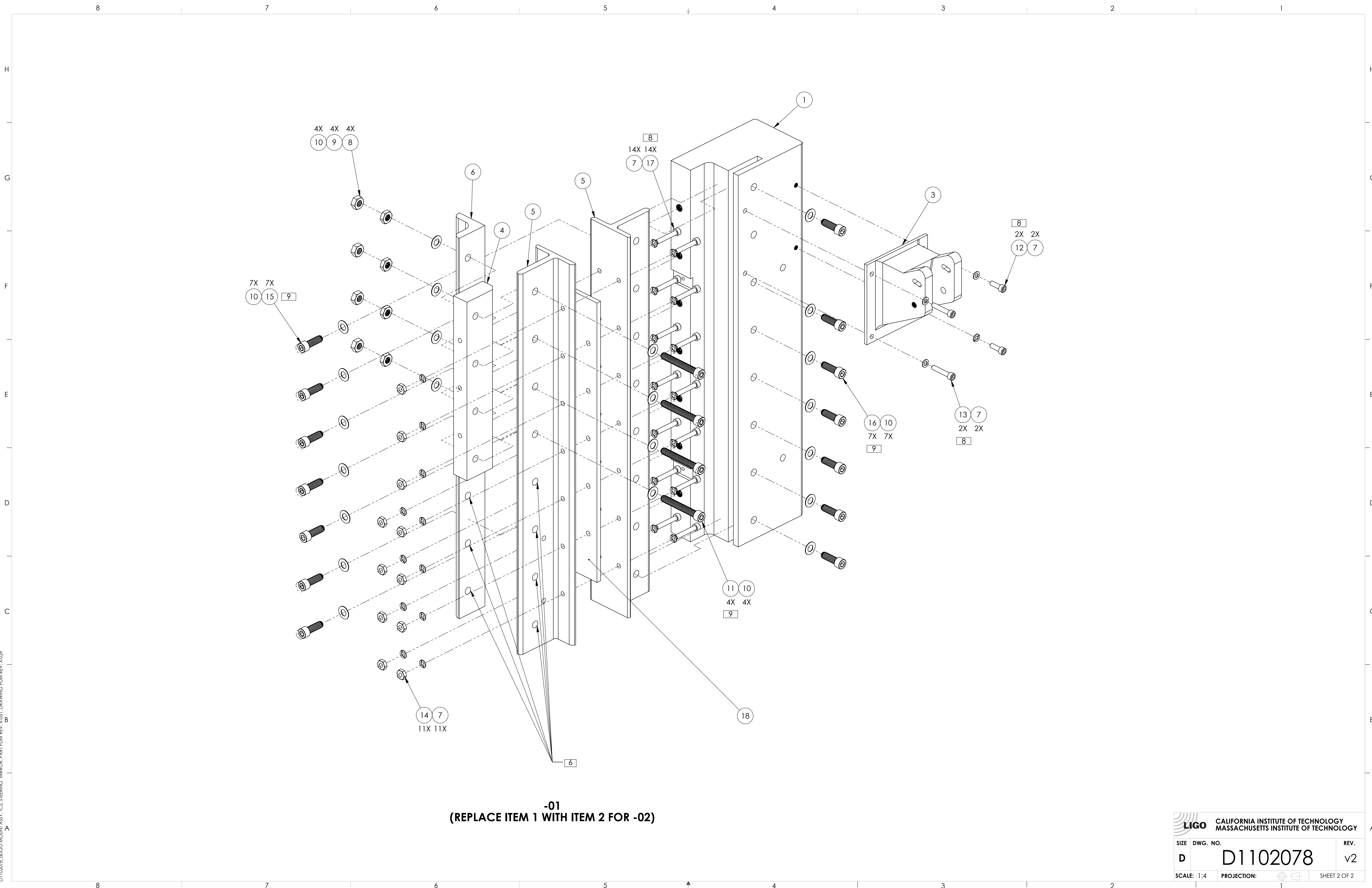
**ADVANCED LIGO**

**AOS**

**ALIGO MOUNT ASSY, TCS, STEERING MIRROR**

DESIGNER	M. JACOBSON	OCT-26-2011	SIZE	DWG. NO.	REV.
DRAFTER	A. COLE	4-NOV-2011	D	D1102078	v2
CHECKER	E. SANCHEZ	22-OCT-2012			
APPROVAL	M. JACOBSON	19-OCT-2012	SCALE: NONE	PROJECTION:	SHEET 1 OF 2

D1102078-ALIGO MOUNT ASSY, TCS, STEERING MIRROR, PART PDM REV: X-051, DRAWING PDM REV: X-029



-01  
 (REPLACE ITEM 1 WITH ITEM 2 FOR -02)

CALIFORNIA INSTITUTE OF TECHNOLOGY MASSACHUSETTS INSTITUTE OF TECHNOLOGY	
SIZE DWG. NO.	REV.
D D1102078	v2
SCALE: 1:4	PROJECTION:
SHEET 2 OF 2	

D1102078.dwg MOUNT ASSY, TCS, STEERING MIRROR, PART PDM REV: X.051, DRAWING PDM REV: X.029