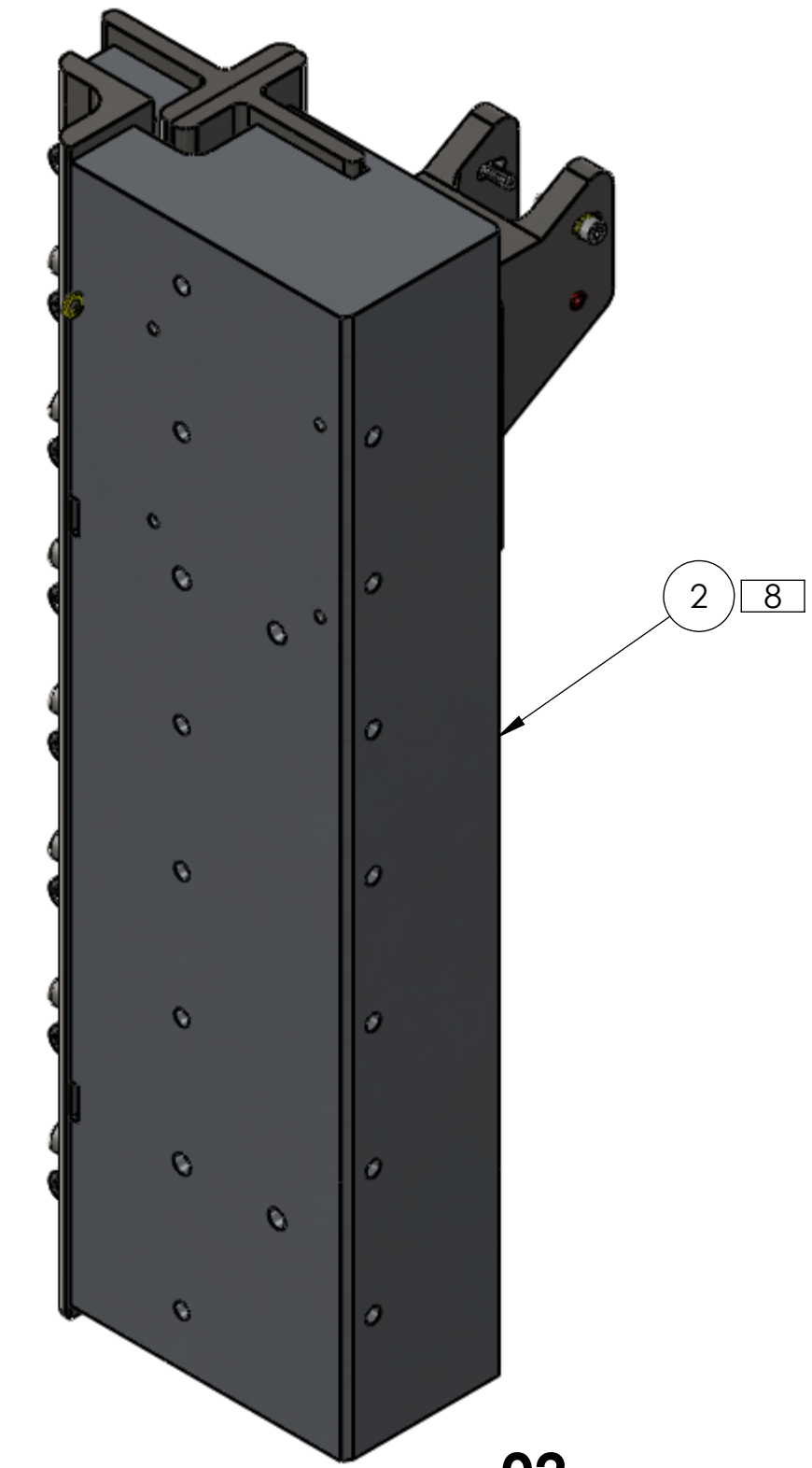
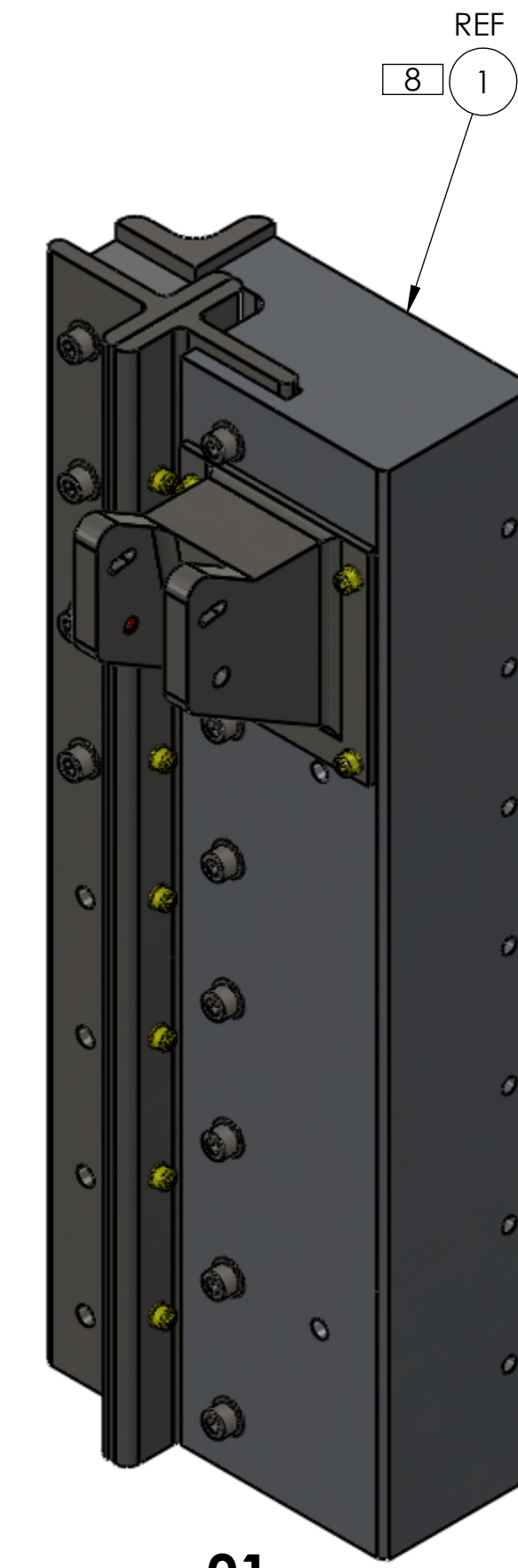
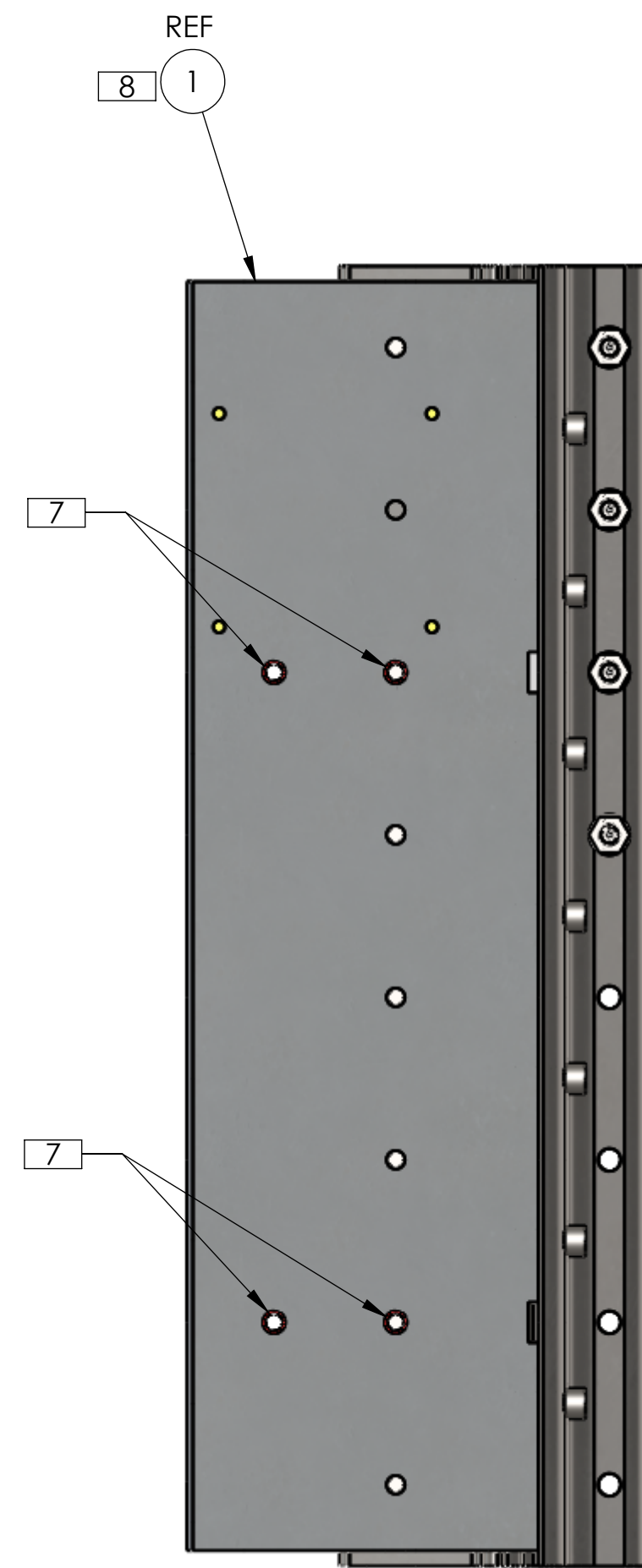
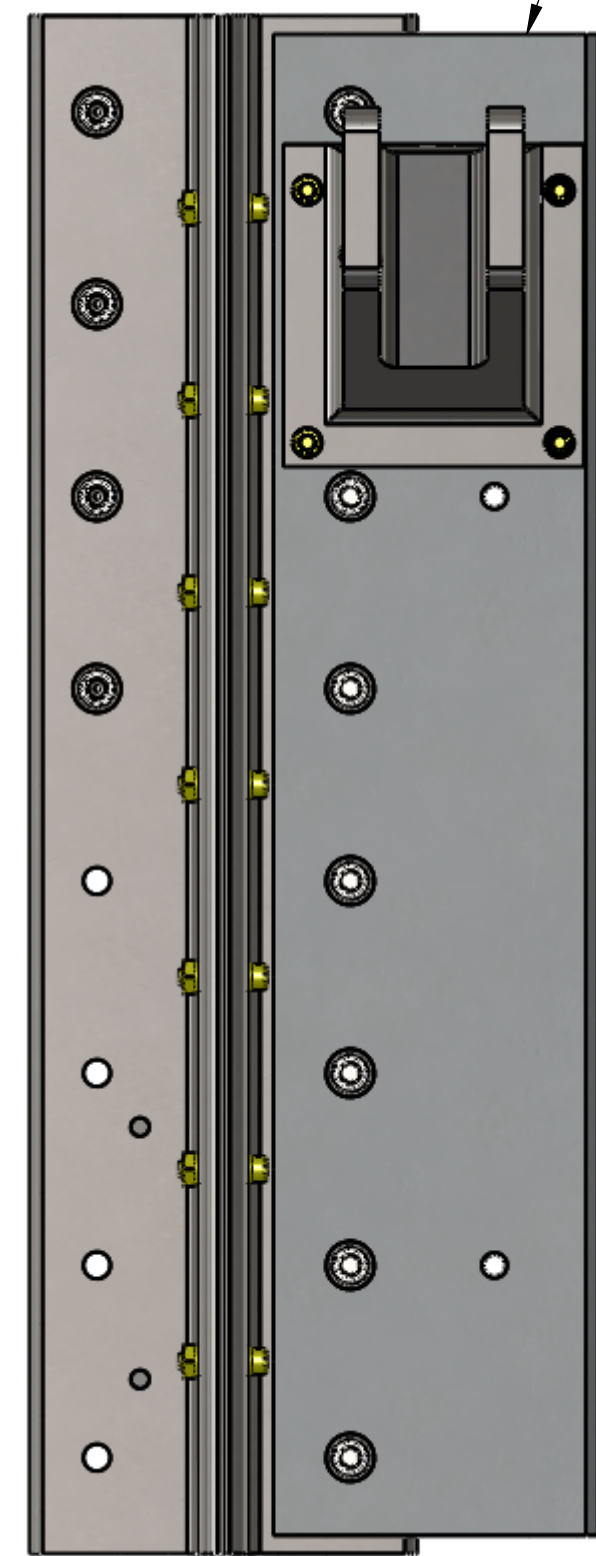
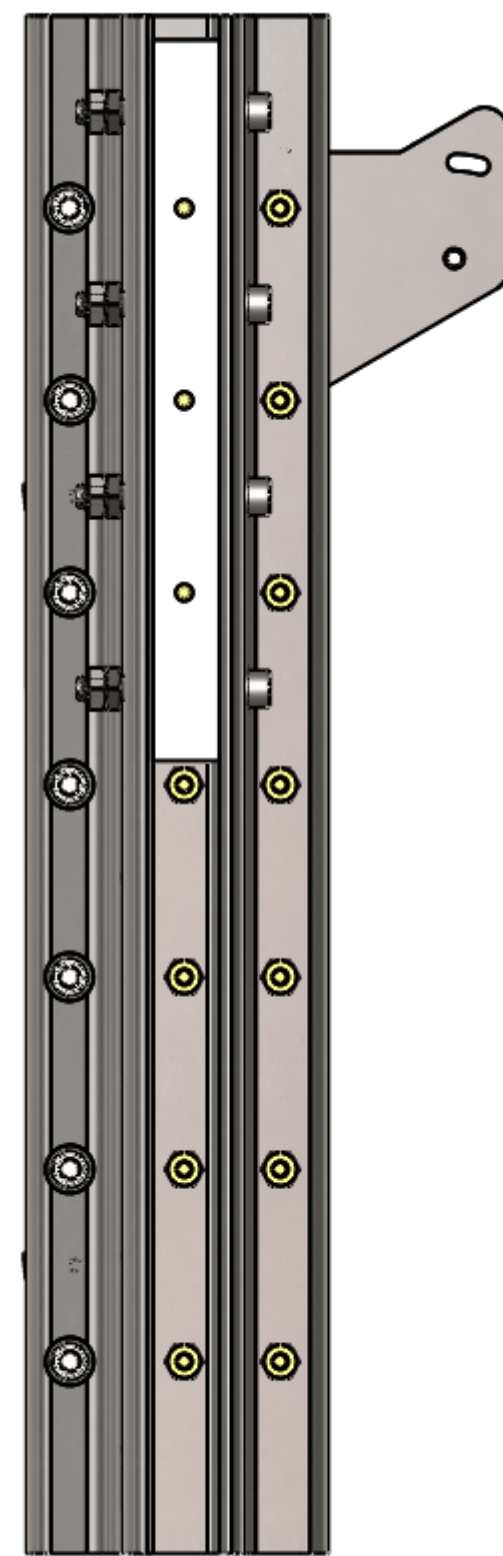
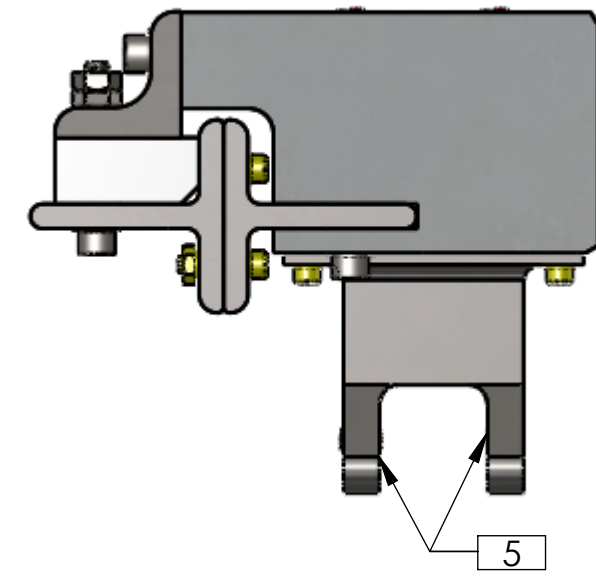


NOTES CONTINUED:

- [5] INTERFACE TO D1102029
- [6] FOR MOUNTING TO BSC FLANGE
- [7] INTERFACE TO D1102088
- [8] FOR ASSEMBLY D1102078-02 REPLACE D1101291-01, ITEM 1, WITH D1101291-02, ITEM 2
- [9] #8-32 TORQUE TO 20 in-lb, MAX
- [10] 1/4-20 TORQUE TO 65 in-lb, MAX

REV.	DATE	DCN #	DRAWING TREE #
v1	01-MAR-2012	E1101043-v1	E1101044-v1



ITEM NO.	NUMBER	DESCRIPTION	MATERIAL	D1102078-01/QTY.	D1102078-02/QT	SPARE	TOTAL
[10]	17	C-2018-N SSHC, 1/4-20 UNC-3A X 1-1/8 Lg. UC-COMPONENTS	18-8 SSSL	7	7	1	8
[10]	16	C-2012-N SSHC, 1/4-20 UNC-3A X 3/4 Lg. UC-COMPONENTS	18-8 SSSL	7	7	1	8
[9]	15	N-832 HEX NUT, #8-32	18-8 SSSL	11	11	4	15
[9]	14	C-814-N SCREW, SOCKET HEAD CAP, #8-32 UNC-2A X .875 LG. UC-COMPONENTS	18-8 SSSL	2	2	2	4
[9]	13	C-808-N SCREW, SOCKET HEAD CAP, #8-32 UNC-2A X 0.5 LG. UC-COMPONENTS	18-8 SSSL	2	2	2	4
[9]	12	C-812-N SHCS #8-32 UNC-2A X 0.75Lg. UC-COMPONENTS	18-8 SSSL	14	14	6	20
[10]	11	C-2028-N SHCS 1/4-20 UNC-3A X 1-3/4 UC COMPONENTS	18-8 SSSL	4	4	1	5
	10	WFV-25-A WASHER, FLAT, .261D X .470D X .032TK. UC COMPONENTS	18-8 SSSL Ag PLTD	22	22	3	25
[10]	9	NJ-2520 HEX JAM NUT, 1/4-20. UC-COMPONENTS	18-8 SSSL	4	4	1	5
[10]	8	N-2520-A NUT, HEX, 1/4-20 UNC-2B. UC COMPONENTS	18-8 SSSL	4	4	1	5
	7	WFV-08-A WASHER, FLAT, #8, .169 ID, .304 OD, .032 THK, VENTED. UC-COMPONENTS	18-8 SSSL Ag PLTD	29	29	6	35
	6	D1101438 STANDARD ANGLE SECTION, SS 316, 1.25 X 1.25 X .25	AISI 316 SSSL	1	1	0	1
	5	D1101287-01 STANDARD T. SS 304, 2 X 2 X .25	AISI 304	2	2	0	2
	4	D1101437 aLIGO TCS SM1 H1-L1 STRONG BACK	6061 Alloy	1	1	0	1
	3	D1101292 H1-L1 SM1 AZ SUPPORT BRKT	AISI 304	1	1	0	1
[8]	2	D1101291-02 H1-L1 STEER M1 BRACKET	6061-Alloy	-	1	0	1
[8]	1	D1101291-01 H1-L1 STEER M1 BRACKET	6061 Alloy	1	-	0	1

NOTES AND TOLERANCES: (UNLESS OTHERWISE SPECIFIED)	
1. INTERPRET DRAWING PER ASME Y14.5-1994.	
2. REMOVE ALL SHARP EDGES, .005-.015. FOR MACHINED PARTS. ROUND ALL EDGES APPROXIMATELY R.02 FOR SHEET METAL PARTS.	
3. DO NOT SCALE FROM DRAWING.	
4. ALL MACHINING FLUIDS MUST BE FULLY SYNTHETIC, FULLY WATER SOLUBLE AND FREE OF SULFUR, SILICONE, AND CHLORINE.	
DIMENSIONS ARE IN INCHES	
TOLERANCES: .XX ± .01 .XXX ± .005	
ANGULAR ± 1.0°	
MATERIAL	N/A
FINISH	N/A μinch

CALIFORNIA INSTITUTE OF TECHNOLOGY
MASSACHUSETTS INSTITUTE OF TECHNOLOGY

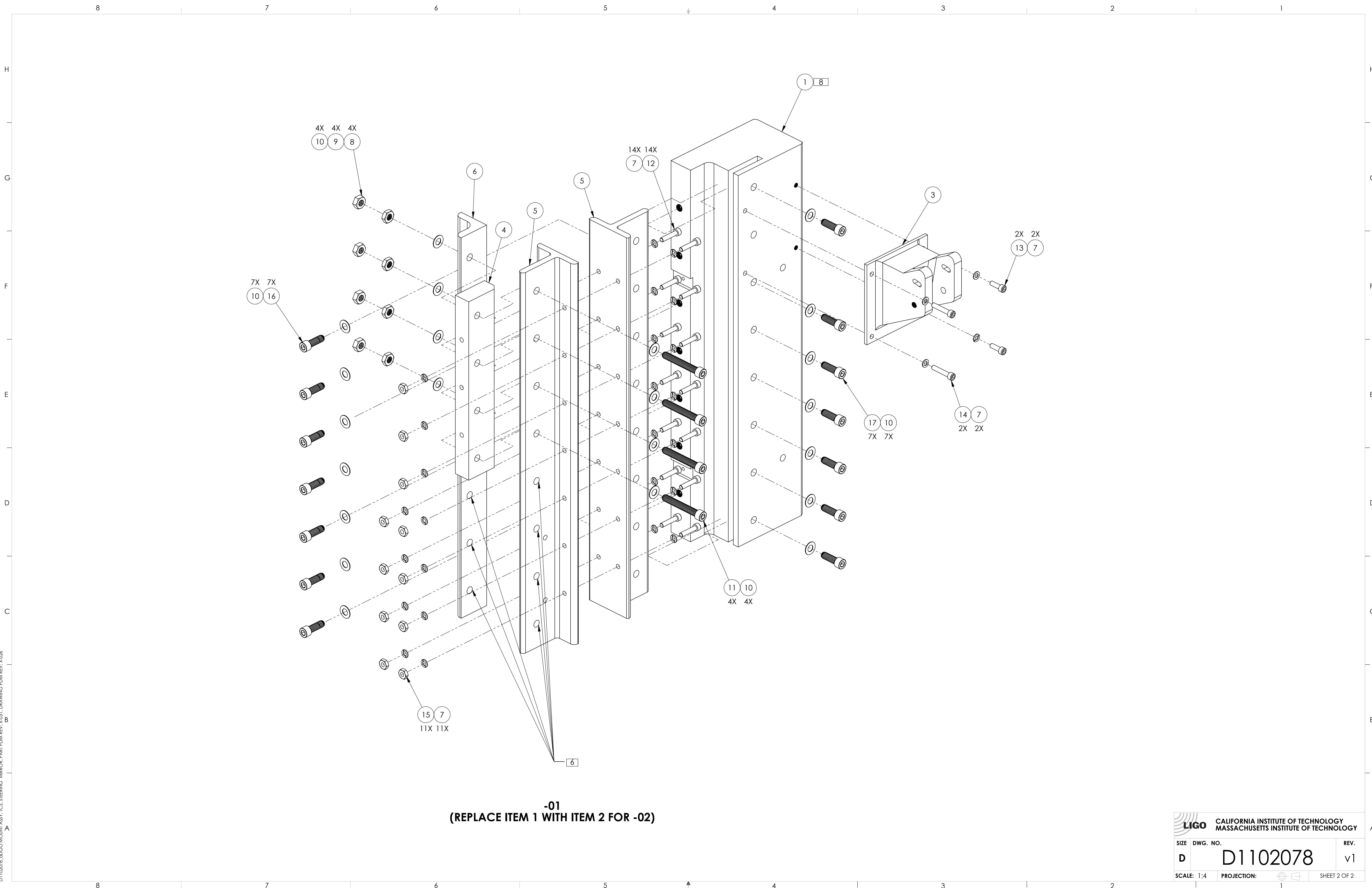
SYSTEM: **ADVANCED LIGO** SUB-SYSTEM: **AOS**

NEXT ASSY: **D1101013**

PART NAME
aLIGO MOUNT ASSY, TCS, STEERING MIRROR

DESIGNER	M. JACOBSON	OCT-26-2011	SIZE	DWG. NO.	REV.
DRAFTER	A. COLE	4-NOV-2011	D	D1102078	v1
CHECKER	J. LEWIS	01-MAR-2012			
APPROVAL	A. BROOKS	4-NOV-2011	SCALE: NONE	PROJECTION:	SHEET 1 OF 2

D1102078-aLIGO MOUNT ASSY, TCS, STEERING MIRROR, PART PDM REV: X-031, DRAWING PDM REV: X-026



-01
 (REPLACE ITEM 1 WITH ITEM 2 FOR -02)

CALIFORNIA INSTITUTE OF TECHNOLOGY MASSACHUSETTS INSTITUTE OF TECHNOLOGY		REV.
SIZE	DWG. NO.	v1
D	D1102078	
SCALE: 1:4	PROJECTION:	SHEET 2 OF 2

D1102078.dwg MOUNT ASSY: TCS, STEERING MIRROR: PART PDM REV: X-031 DRAWING PDM REV: X-026