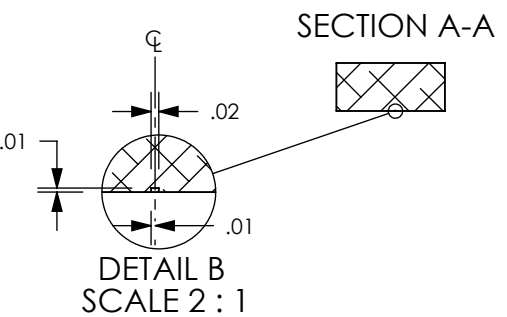


8 7 6 5 4 3 2 1

NOTES CONTINUED:
 5. SCRIBE, ENGRAVE (A VIBRATORY TOOL MAY BE USED), LASER MARK OR MECHANICALLY STAMP (NO INKS OR DYES) DRAWING PART NUMBER, REVISION (AND VARIANT OR "TYPE" IF APPLICABLE) ON NOTED SURFACE OF PART FOLLOWED ON THE NEXT LINE WITH A THREE DIGIT SERIAL NUMBER. SERIAL NUMBERS START AT 001 FOR THE FIRST ARTICLE AND PROCEED CONSECUTIVELY. USE MINIMUM 0.12" HIGH CHARACTERS, UNLESS THE SIZE OF THE PART DICTATES SMALLER CHARACTERS. EXAMPLE: DXXXXXX-VY, TYPE-XX, S/N XXX

- 6. SURFACE FINISH TO BE AS-PROCESSED FROM MILL/SUPPLIER, FREE FROM SCRATCHES OR GOUGES.
- 7. ALL PARTS SHALL BE MANUFACTURED IN ACCORDANCE WITH LIGO SPECIFICATION E0900364.
- 8. ALL MATERIAL IS TO BE VIRGIN MATERIAL (i.e. NO WELD REPAIRS, PLUGS OR RECYCLED MATERIAL). NO REPAIRS SHALL BE MADE UNLESS APPROVED IN ADVANCE, AND IN WRITING, BY LIGO LABORATORY. REFER TO LIGO-E0900364.
- 9. APPROXIMATE WEIGHT = 62.4 LB.

REV.	DATE	DCN #	DRAWING TREE #
v1	21 OCT 2011	E1100335	-
v2	18 SEP 2012	E1100312	-
-	-	-	-

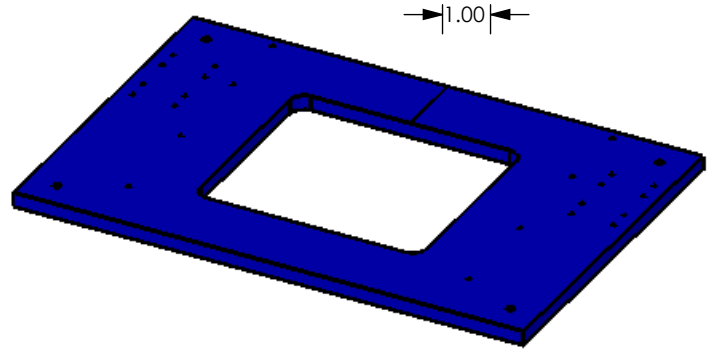
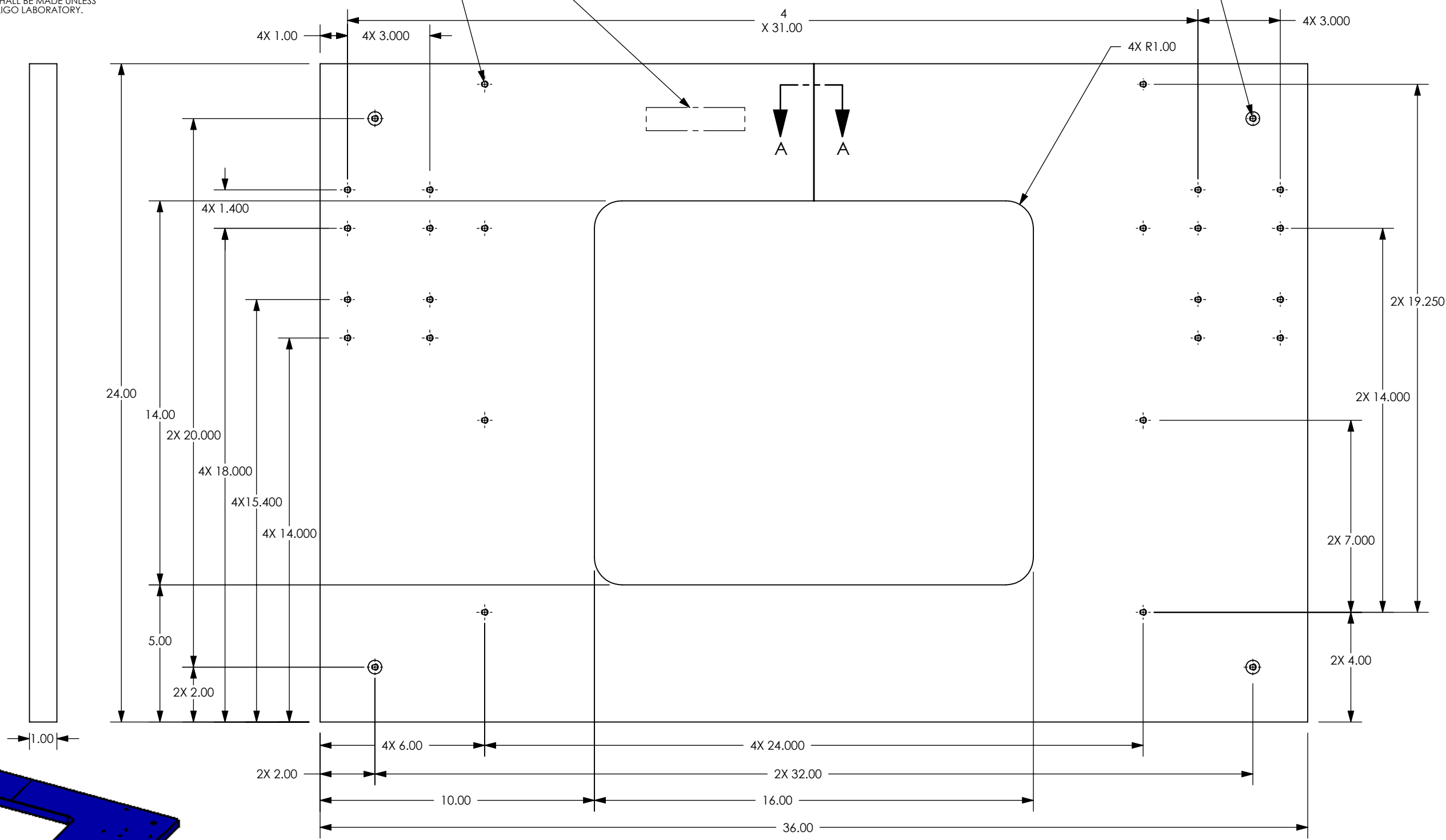


24X Ø.201 THRU
 1/4-20 UNC-2B THRU
 +.005 OVERSIZED TAP

4X Ø.201 THRU
 1/4-20 UNC-2B THRU
 □ Ø .500 ▽ .40
 +.005 OVERSIZED TAP

D
C
B
A

D
C
B
A



NOTES AND TOLERANCES: (UNLESS OTHERWISE SPECIFIED)

- INTERPRET DRAWING PER ASME Y14.5-1994.
- REMOVE ALL SHARP EDGES, .005-.015, FOR MACHINED PARTS. ROUND ALL EDGES APPROXIMATELY R.02 FOR SHEET METAL PARTS.
- DO NOT SCALE FROM DRAWING.
- ALL MACHINING FLUIDS MUST BE FULLY SYNTHETIC, FULLY WATER SOLUBLE AND FREE OF SULFUR, SILICONE, AND CHLORINE.

DIMENSIONS ARE IN
 TOLERANCES:
 .XX ± .01
 .XXX ± .005
 ANGULAR ± .5°

MATERIAL	6061-T6 Al	FINISH	63 μinch
----------	------------	--------	----------

CALIFORNIA INSTITUTE OF TECHNOLOGY MASSACHUSETTS INSTITUTE OF TECHNOLOGY		PART NAME	
SYSTEM ADVANCED LIGO		SUB-SYSTEM AOS	
DESIGNER	CHECKER	APPROVAL	
DRAFTER	MRUIZ	21 OCT 2011	
NEXT ASSY		D1101953	
SCALE: 1:4		PROJECTION:	
SIZE DWG. NO.		REV.	
B D1102061		v2	
SHEET 1 OF 1			

D1102061, TABLE, SUSPENSION LIFT, PART PDM REV: X-008, DRAWING PDM REV: X-012

8 7 6 5 4 3 2 1