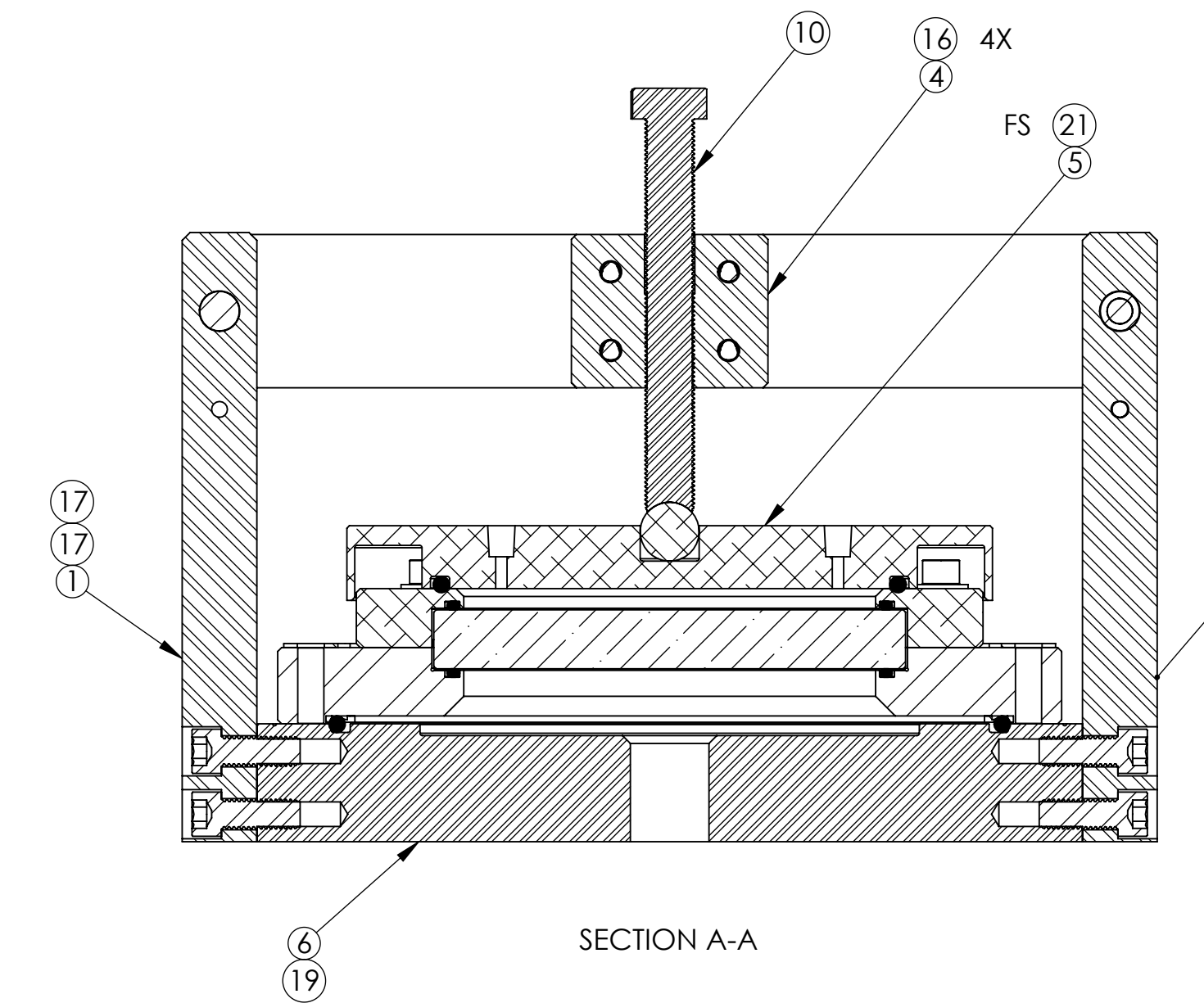
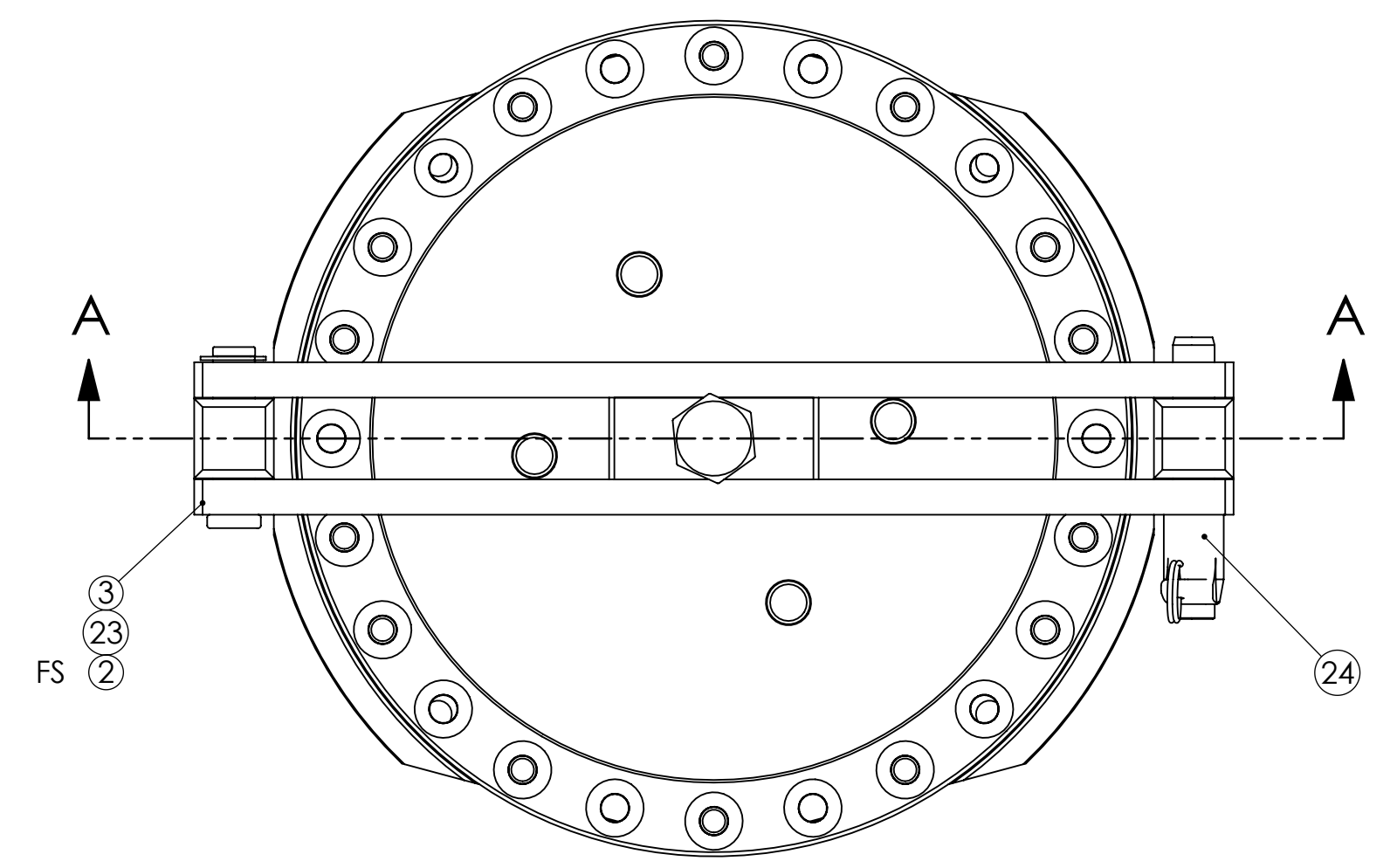


ITEM NO.	PART NUMBER	DESCRIPTION	D1101939 QTY.	D1101939-1 QTY.	D1101939-2 QTY.	D1101939-3 QTY.	D1101939-4 QTY.	D1101939-5 QTY.
27	PARKER NO.:2-364	O-RING.3/16 WIDE	-	-	1	-	-	-
26	D1101938	ALIGO, AOS, VIEWPORT LEAK TEST FIXTURE, PROOF TEST CAP ASSY. (HP V.P)	-	-	-	-	-	1
25	PARKER NO.:2-367	O-RING. 3/16 WIDE	-	-	-	-	-	1
24	90302A411 McMASTER-CARR	QUICK RLS PIN, .50 DIA X 1.50 LG.	1	1	1	1	1	1
23	92735A515 McMASTER-CARR	PIN. CLEVIS, .50 DIA. X 2.0 LG. W. RETAINING RING	1	1	1	1	1	1
22	PARKER NO.:2-365	O-RING. 3/16 WIDE	-	-	2	-	-	-
21	PARKER NO.: 2-358	O-RING. 3/16 WIDE	1	-	-	-	-	-
20	PARKER NO.:2-354	O-RING. 3/16 WIDE	-	2	-	-	-	-
19	PARKER NO.:2-370	O-RING. 3/16 WIDE	1	1	1	1	1	1
18	PARKER NO.:2-227	O-RING, 1/8 WIDE	-	-	-	-	2	-
17	MS16995-81	SCREW, SHC, 3/8-16 X 1.0 LG.	4	4	4	4	4	4
16	MS16995-54	SCREW, SHC, 1/4-20 X 1.50 LG.	4	4	4	4	4	4
15	MS16995-48	SCREW, SHC, 1/4-20 X .50 LG.	1	1	1	1	1	1
14	D1200399-3	ALIGO, AOS, VIEWPORT LEAK TEST FIXTURE, INTERNAL SUPPORT RING (MDC450004)	-	-	-	-	1	-
13	D1200399-2	ALIGO, AOS, VIEWPORT LEAK TEST FIXTURE, INTERNAL SUPPORT RING (MDC9722012)	-	-	1	-	-	-
12	D1200399-1	ALIGO, AOS, VIEWPORT LEAK TEST FIXTURE, INTERNAL SUPPORT RING (ZV-800)	-	1	-	-	-	-
11	D1102191	ALIGO, AOS, VIEWPORT LEAK TEST FIXTURE, PROOF TEST CAP ASSY. (CO2P VP)	-	-	-	1	-	-
10	D1101940	ALIGO, AOS, VIEWPORT TEST FIXTURE, SCREW, HH CAP	1	1	1	1	1	1
9	D1101938-3	ALIGO, AOS, VIEWPORT LEAK TEST FIXTURE, PROOF TEST CAP ASSY. (MDC450004)	-	-	-	-	1	-
8	D1101938-2	ALIGO, AOS, VIEWPORT LEAK TEST FIXTURE, PROOF TEST CAP ASSY. (MDC9722012)	-	-	1	-	-	-
7	D1101938-1	ALIGO, AOS, VIEWPORT LEAK TEST FIXTURE, PROOF TEST CAP ASSY. (ZV-800)	-	1	-	-	-	-
6	D1101937	ALIGO, AOS, VIEWPORT LEAK TEST FIXTURE, BASE PLATE	1	1	1	1	1	1
5	D1101936	ALIGO, AOS, VIEWPORT LEAK TEST FIXTURE, PROOF TEST CAP ASSY. (HQ V.P)	1	-	-	-	-	-
4	D1101934	ALIGO, AOS, VIEWPORT LEAK TEST FIXTURE, THREADED LEAD SCREW MT. BLOCK	1	1	1	1	1	1
3	D1101933-1	ALIGO, AOS, VIEWPORT LEAK TEST FIXTURE, LEAD SCREW MT. BLOCK HORIZ. SUPPORT (C'BORE)	1	1	1	1	1	1
2	D1101933	ALIGO, AOS, VIEWPORT LEAK TEST FIXTURE, LEAD SCREW MT. BLOCK HORIZ. SUPPORT (THREADED)	1	1	1	1	1	1
1	D1101932	ALIGO, AOS, VIEWPORT LEAK TEST FIXTURE, HORIZ. SUPPORT MT. STUD	2	2	2	2	2	2

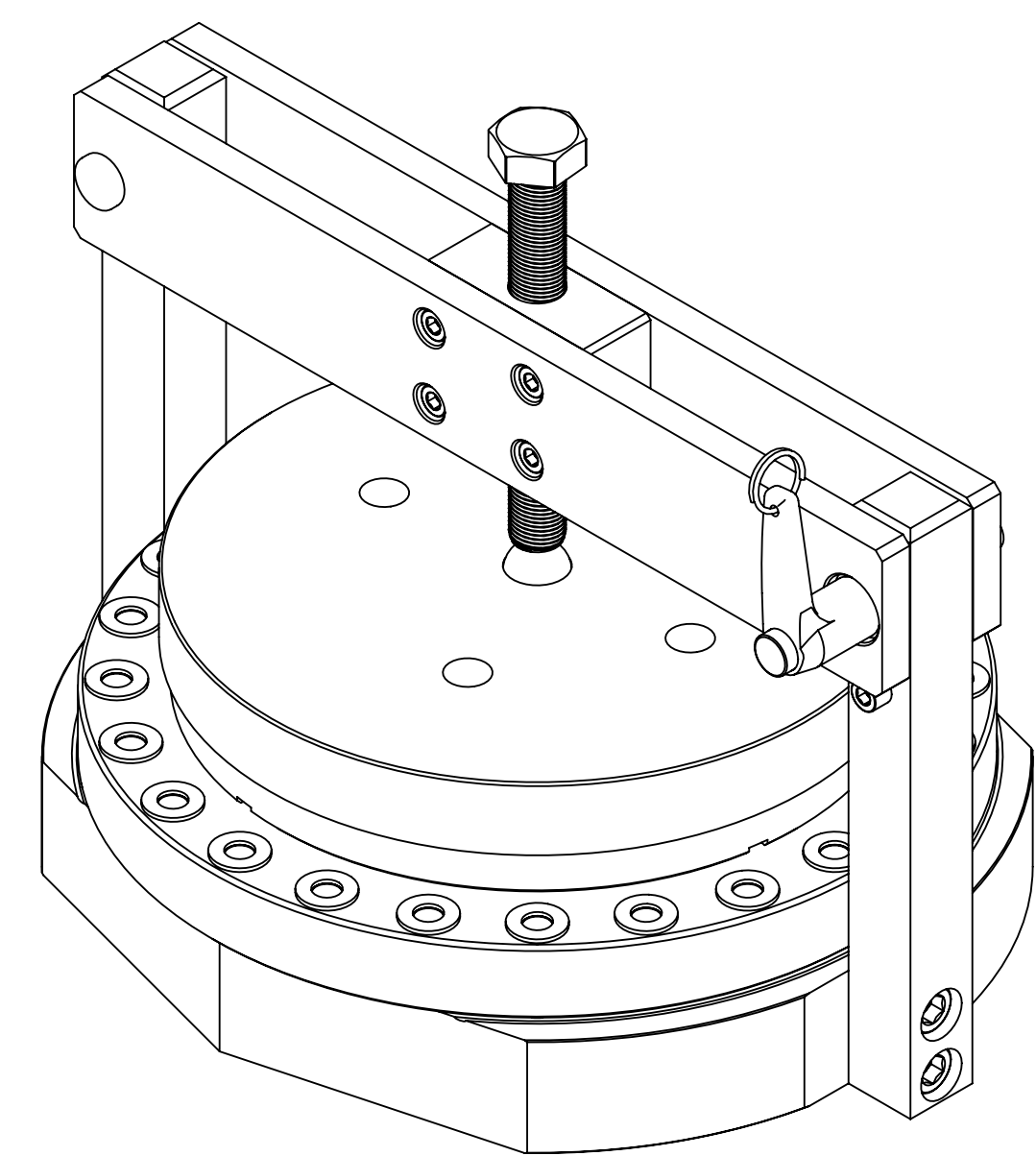
PARTS LIST

REV.	DATE	DCN #	DRAWING TREE #
v1	11 OCT 2011	-	-
v7	09 MAR 2012	E1200271-x0	-
v8	25 SEP 2012	E1200271-v1	-



SECTION A-A

BASIC



ISO VIEW

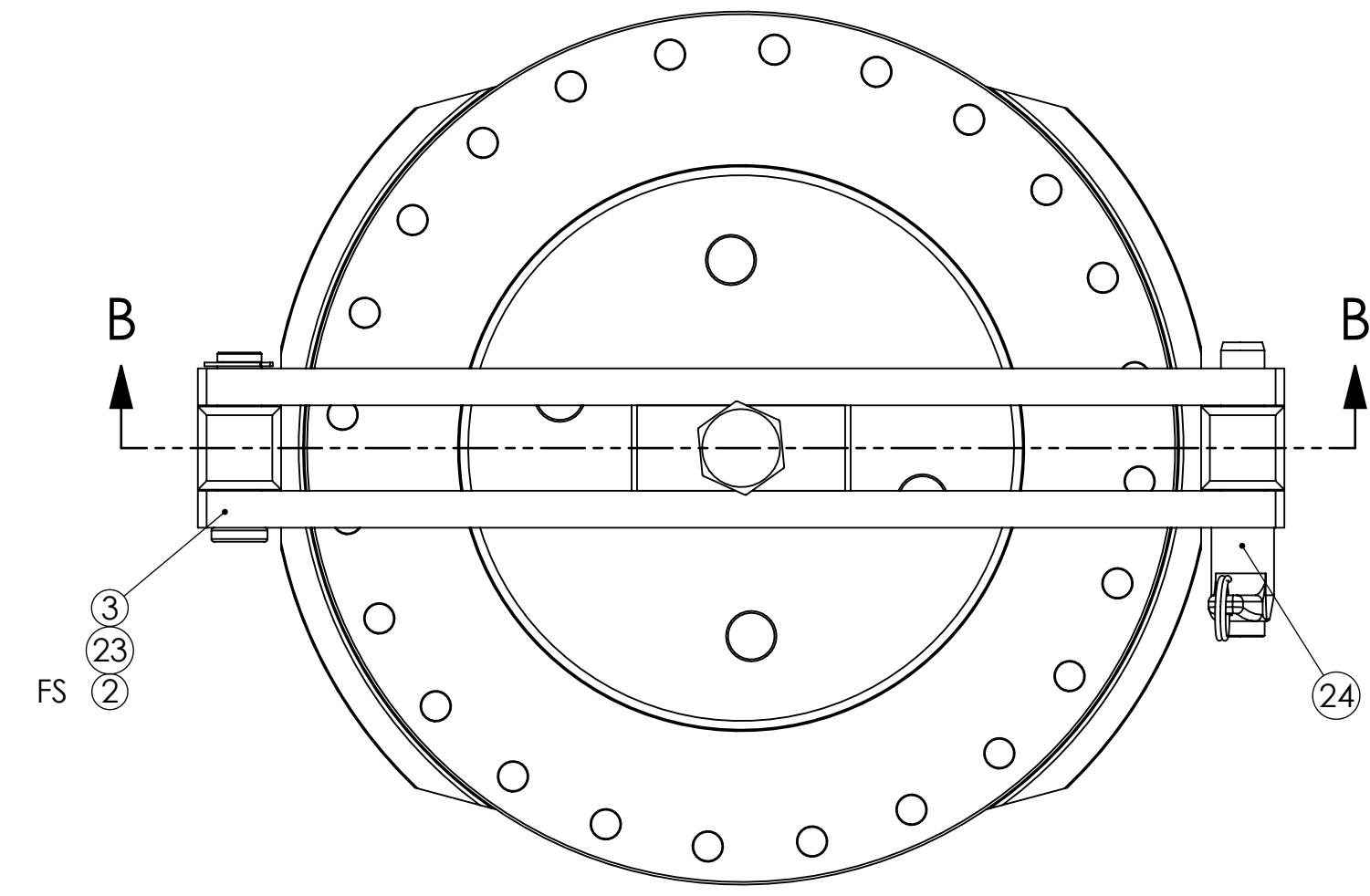
APPLICATION	
PART NO.	'WHERE-USED'
D1101939	D1100999 D1101000
D1101939-1	ZV-800
D1101939-2	MCD9722012
D1101939-3	CO2P
D1101939-4	MDC450004
D1101939-5	D1101670 D1101714

NOTES AND TOLERANCES: (UNLESS OTHERWISE SPECIFIED)

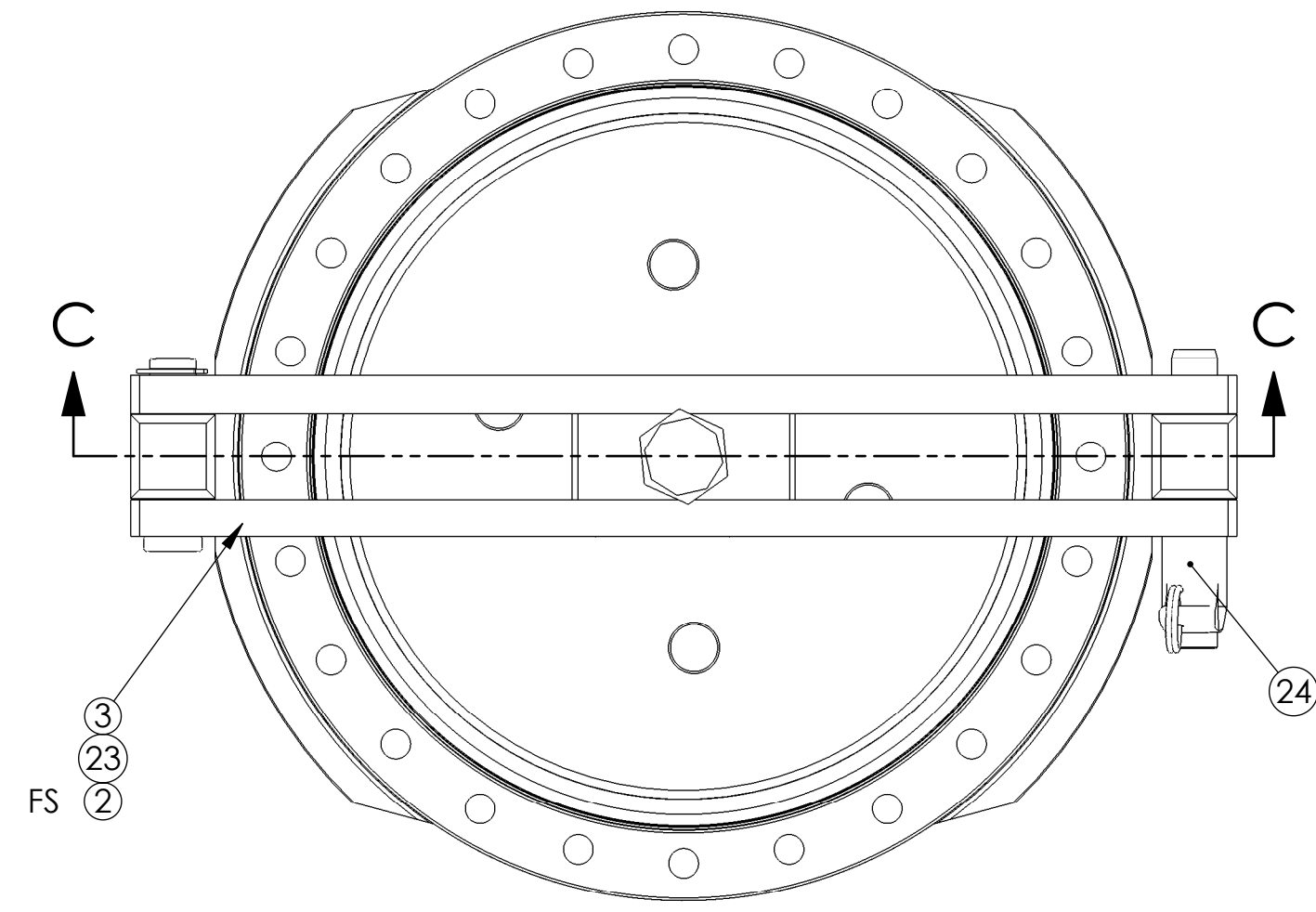
MATERIAL		FINISH		NEXT ASSY		SYSTEM		SUB-SYSTEM		DESIGNER		DRAFTER		CHECKER		APPROVAL		PART NAME	
N/A		N/A μinch		MULTIPLE		ADVANCED LIGO		AOS		J.LEWIS		E.SANCHEZ		SEE DCC		SEE DCC		ALIGO, AOS, VIEWPORT LEAK TEST FIXTURE ASSY.	
										07 OCT 2011		11 OCT 2011		D		D1101939		v8	
										SCALE: 1:2		PROJECTION:						SHEET 1 OF 3	

D1101939-ALIGO, AOS, VIEWPORT LEAK TEST FIXTURE ASSY. PART PDM REV. X-011. DRAWING PDM REV. X-023

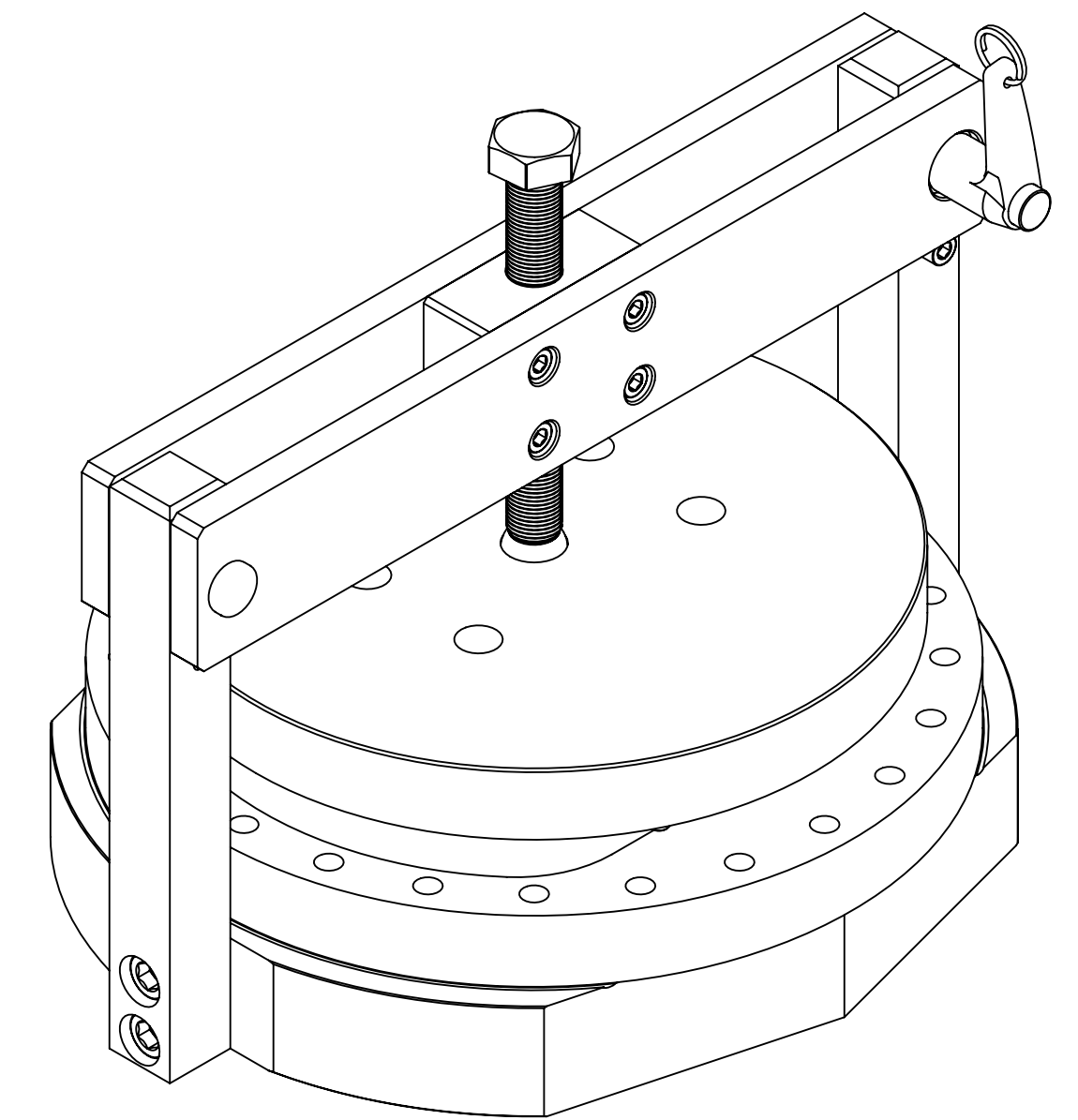
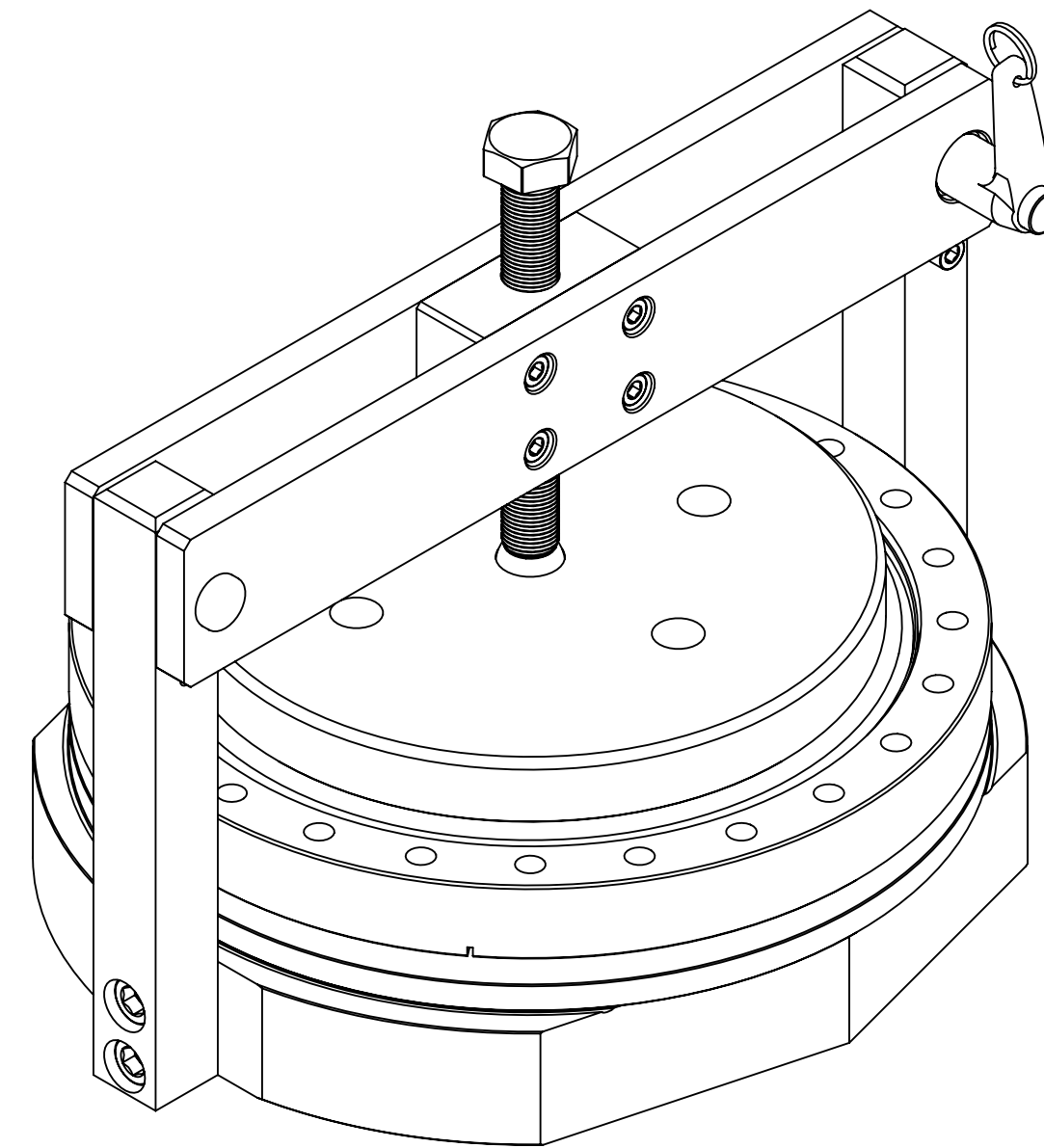
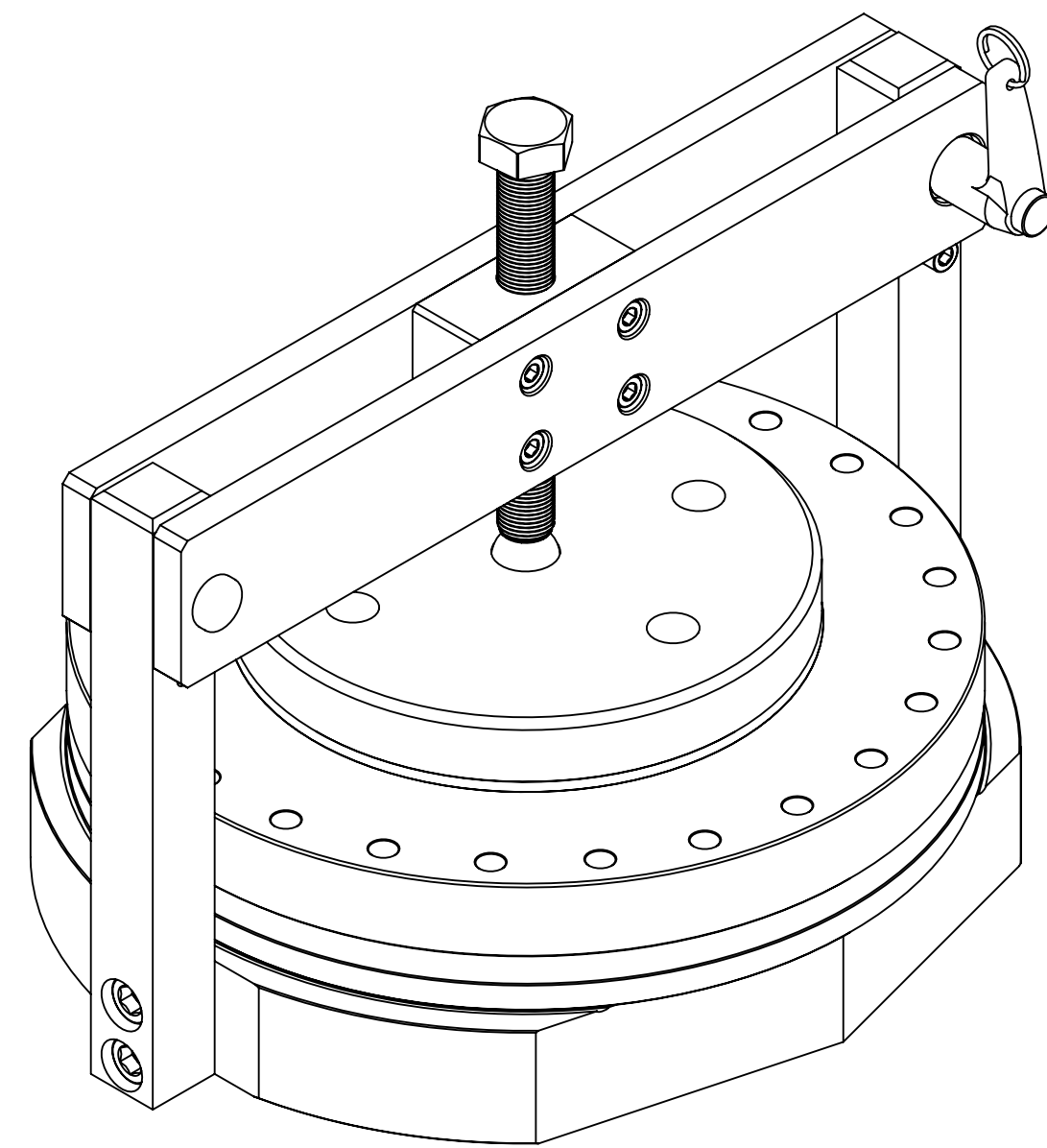
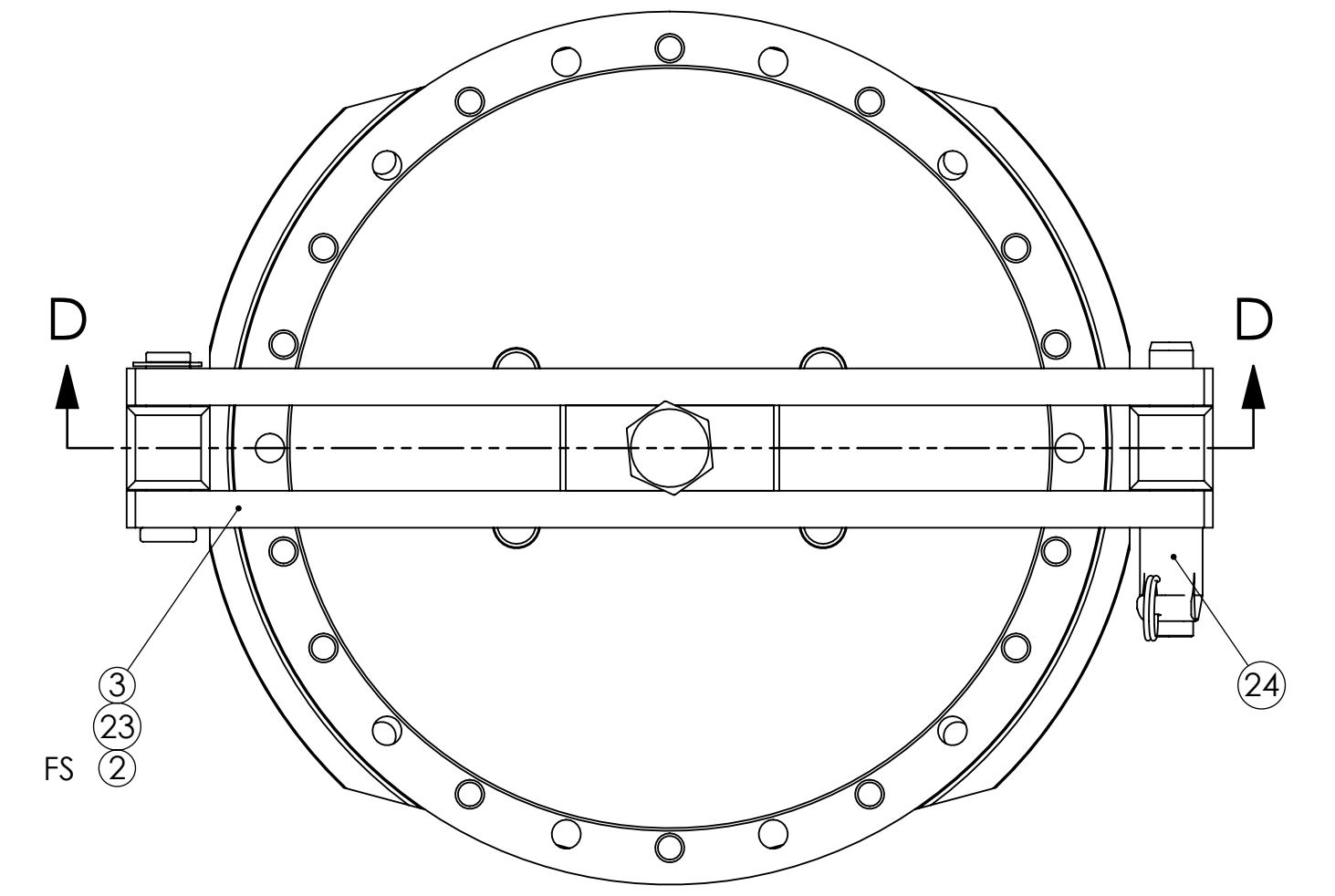
-1 CONFIG.



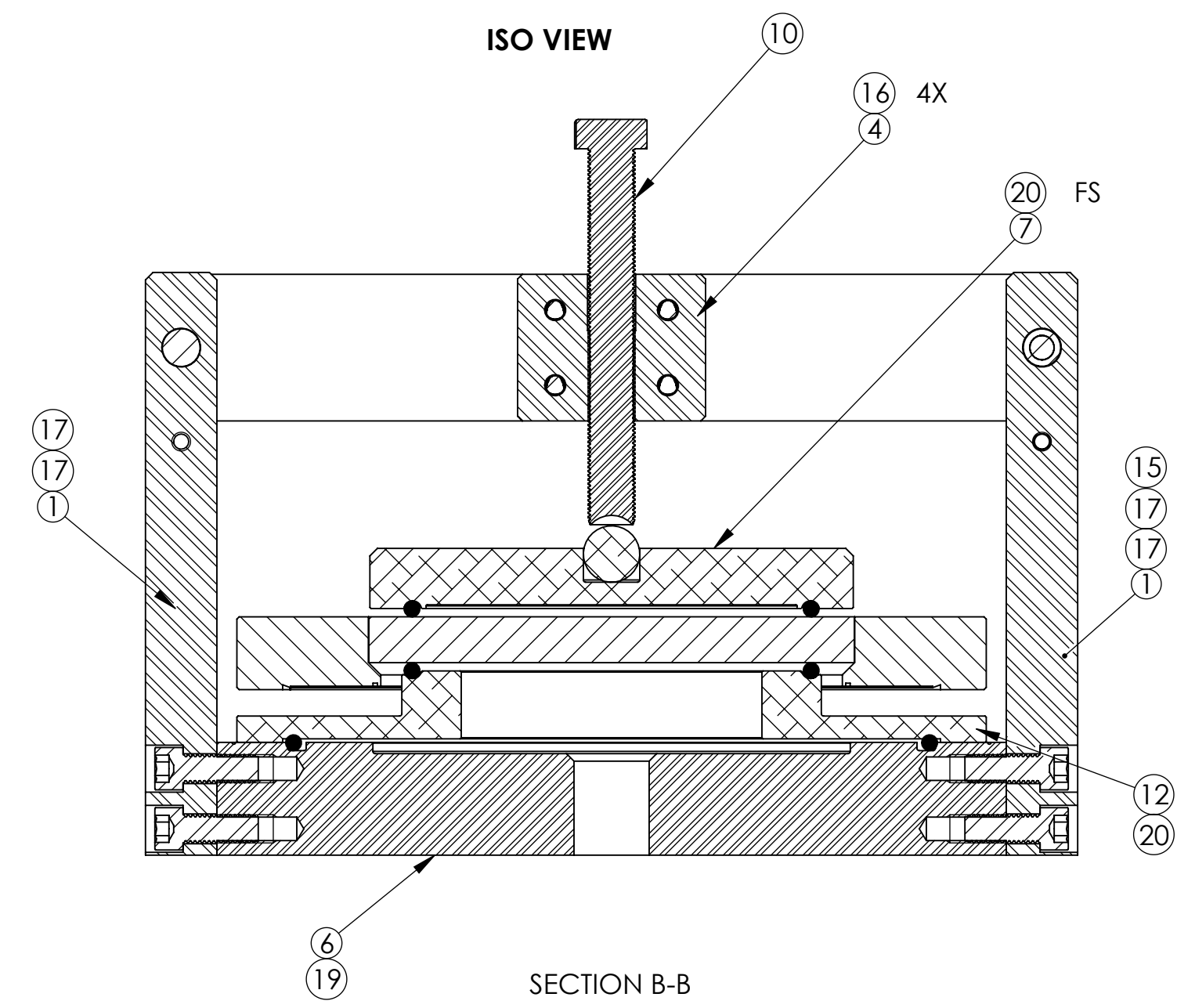
-2 CONFIG.



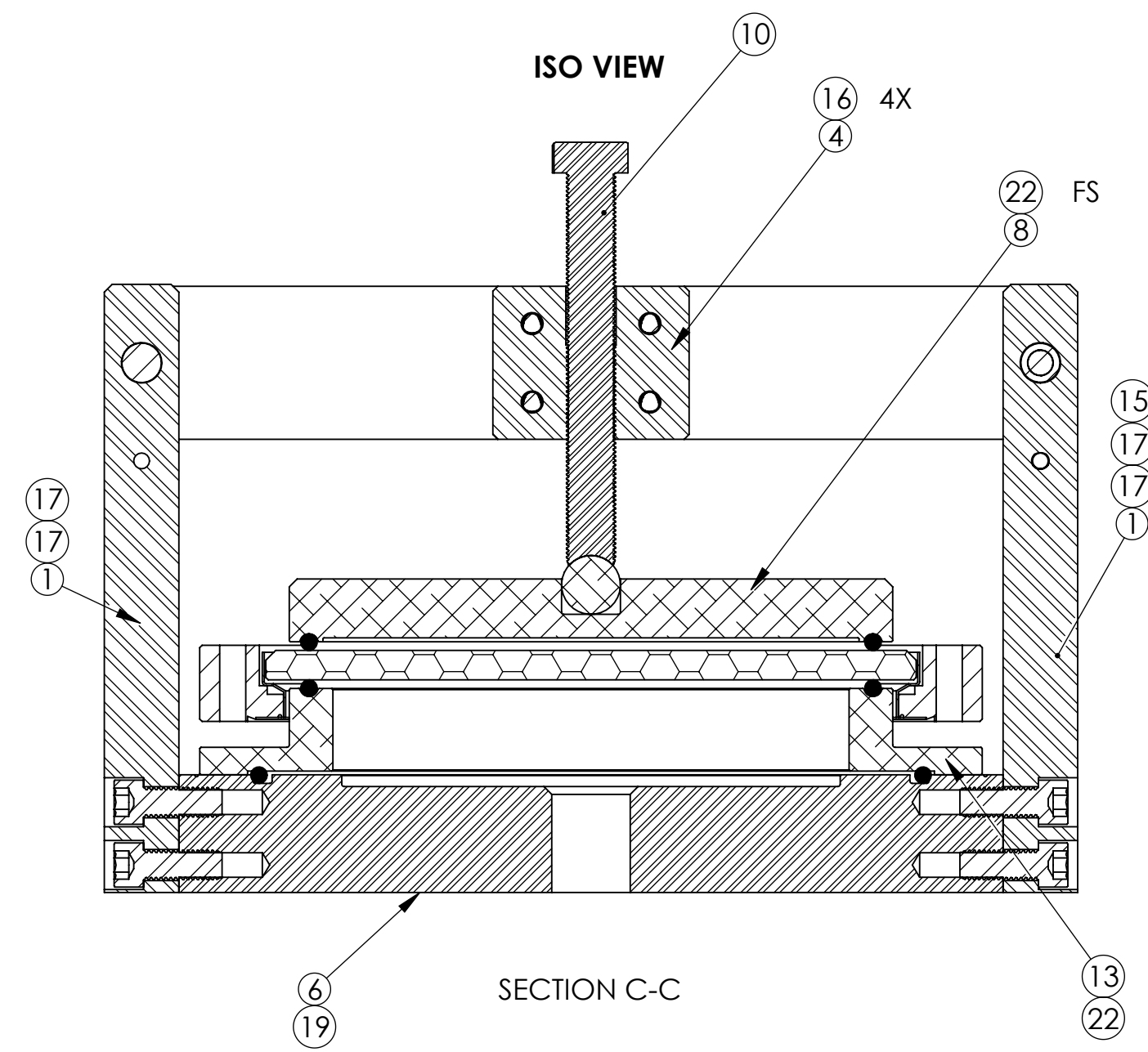
-3 CONFIG.



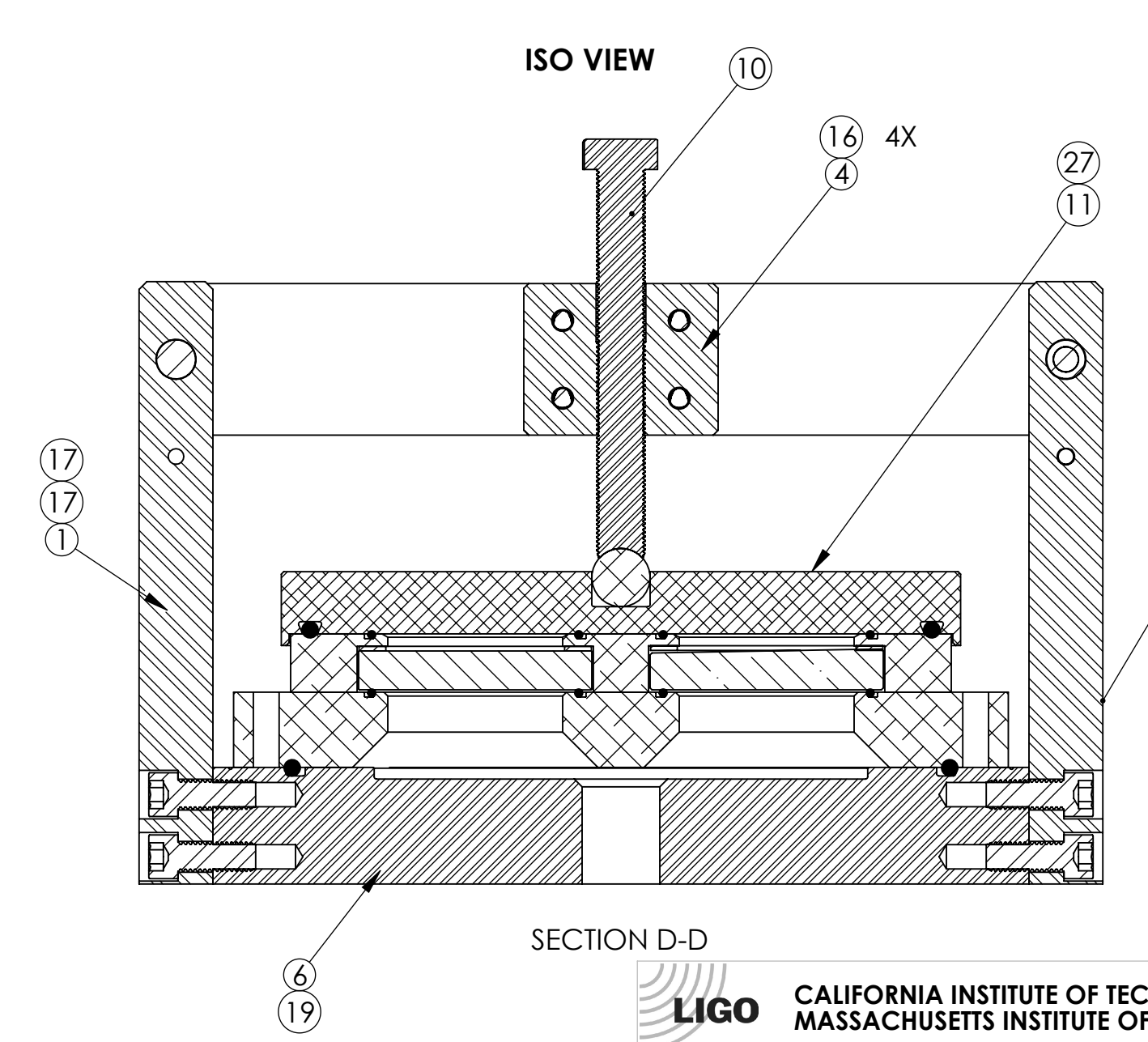
ISO VIEW



ISO VIEW



ISO VIEW

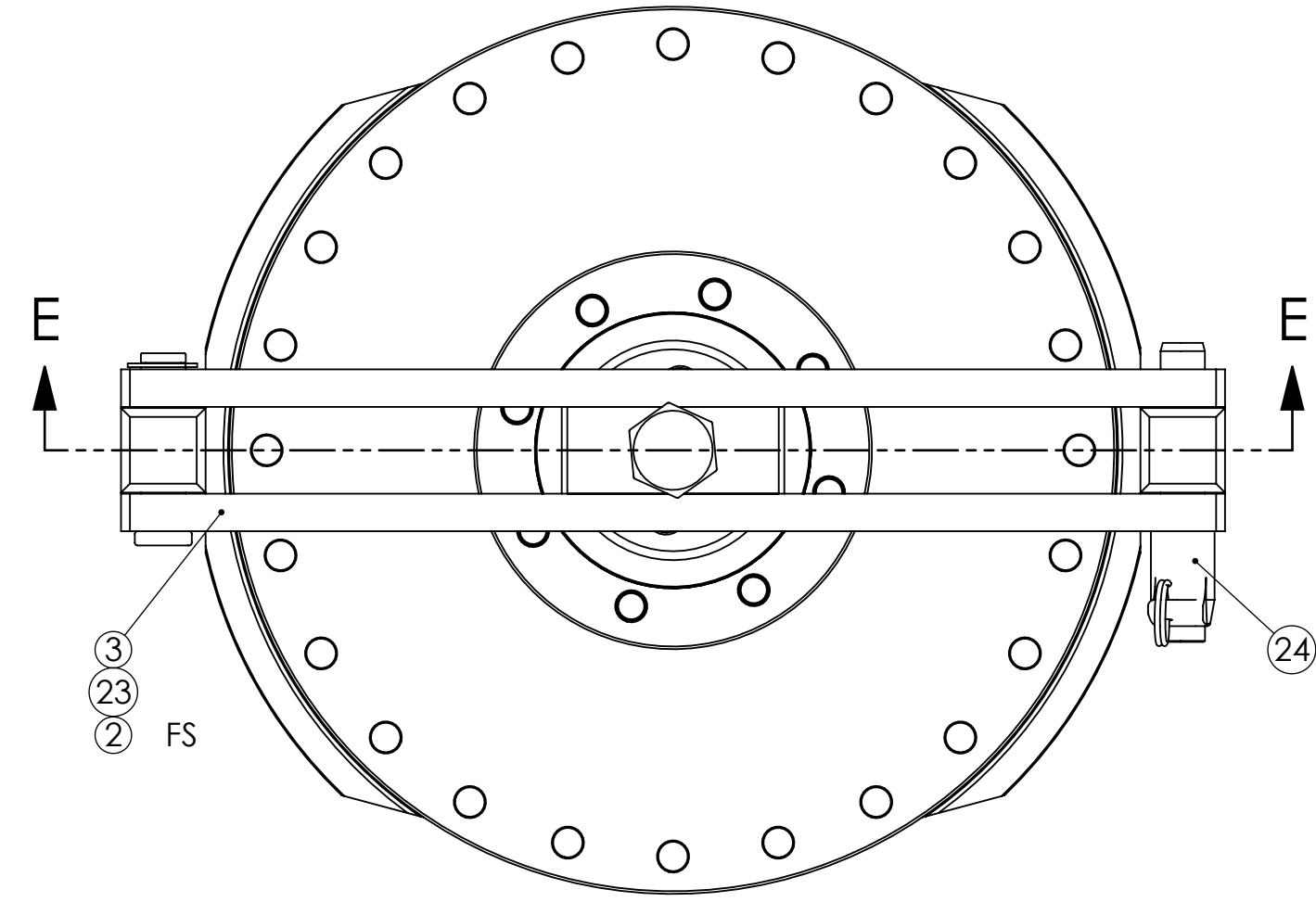


LIGO CALIFORNIA INSTITUTE OF TECHNOLOGY
 MASSACHUSETTS INSTITUTE OF TECHNOLOGY

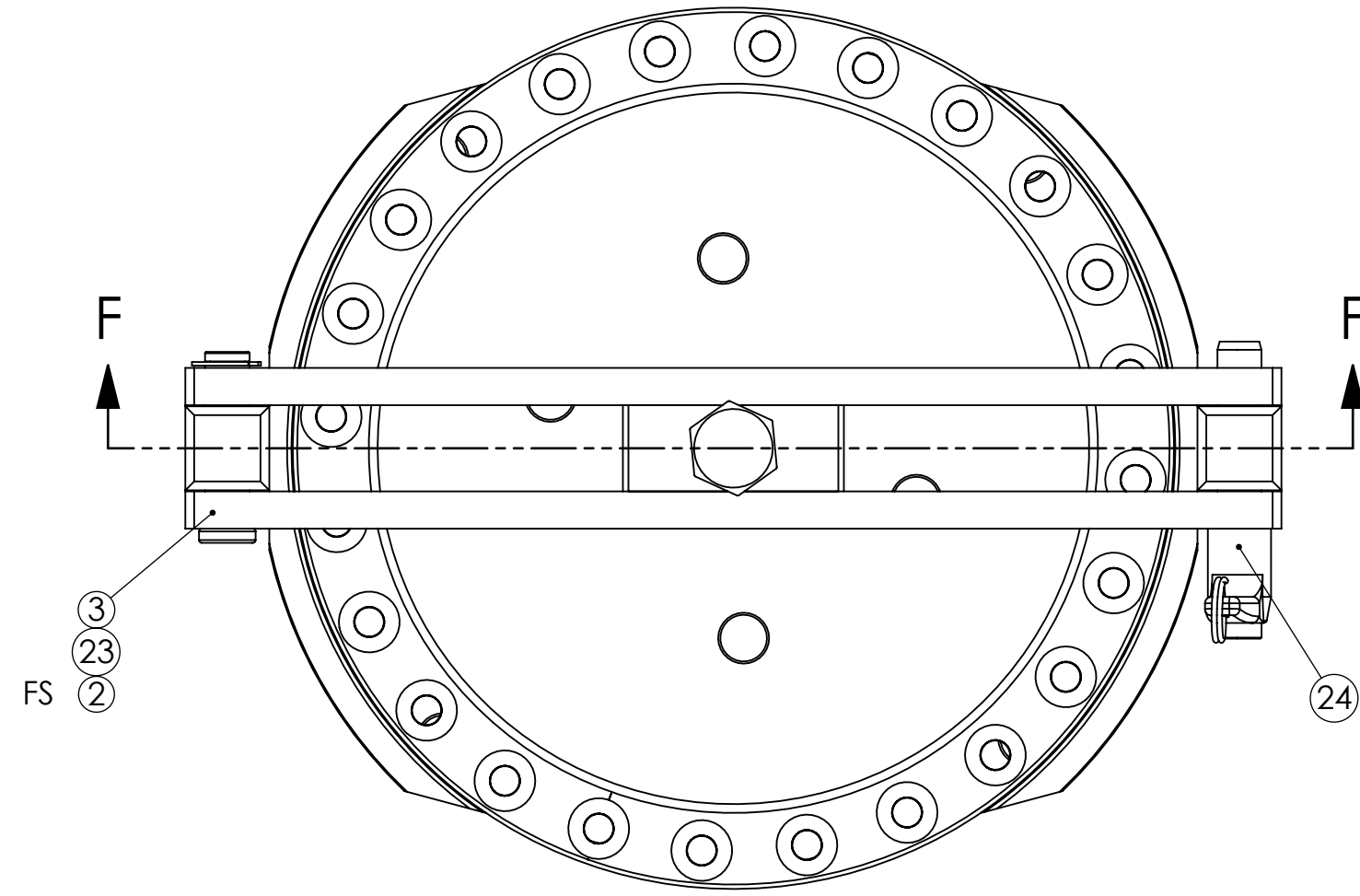
SIZE DWG. NO.	REV.
D D1101939	v8
SCALE: 1:2	PROJECTION:
SHEET 2 OF 3	

D:\101939-01\GCO_ACS_VIEWPORT LEAK TEST FIXTURE ASSY_PART PDM REV.X-011.DWG PDM REV.X-023

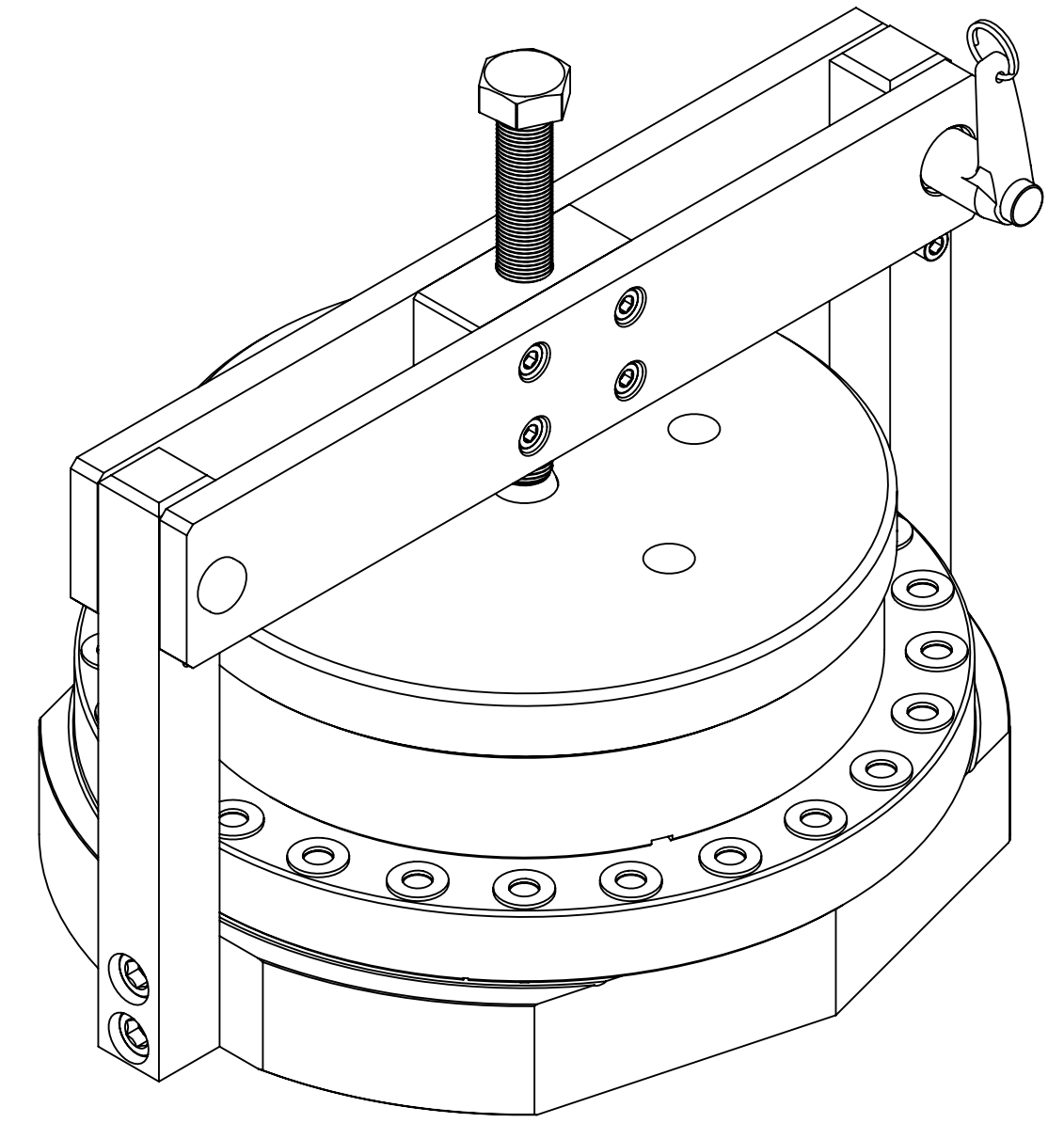
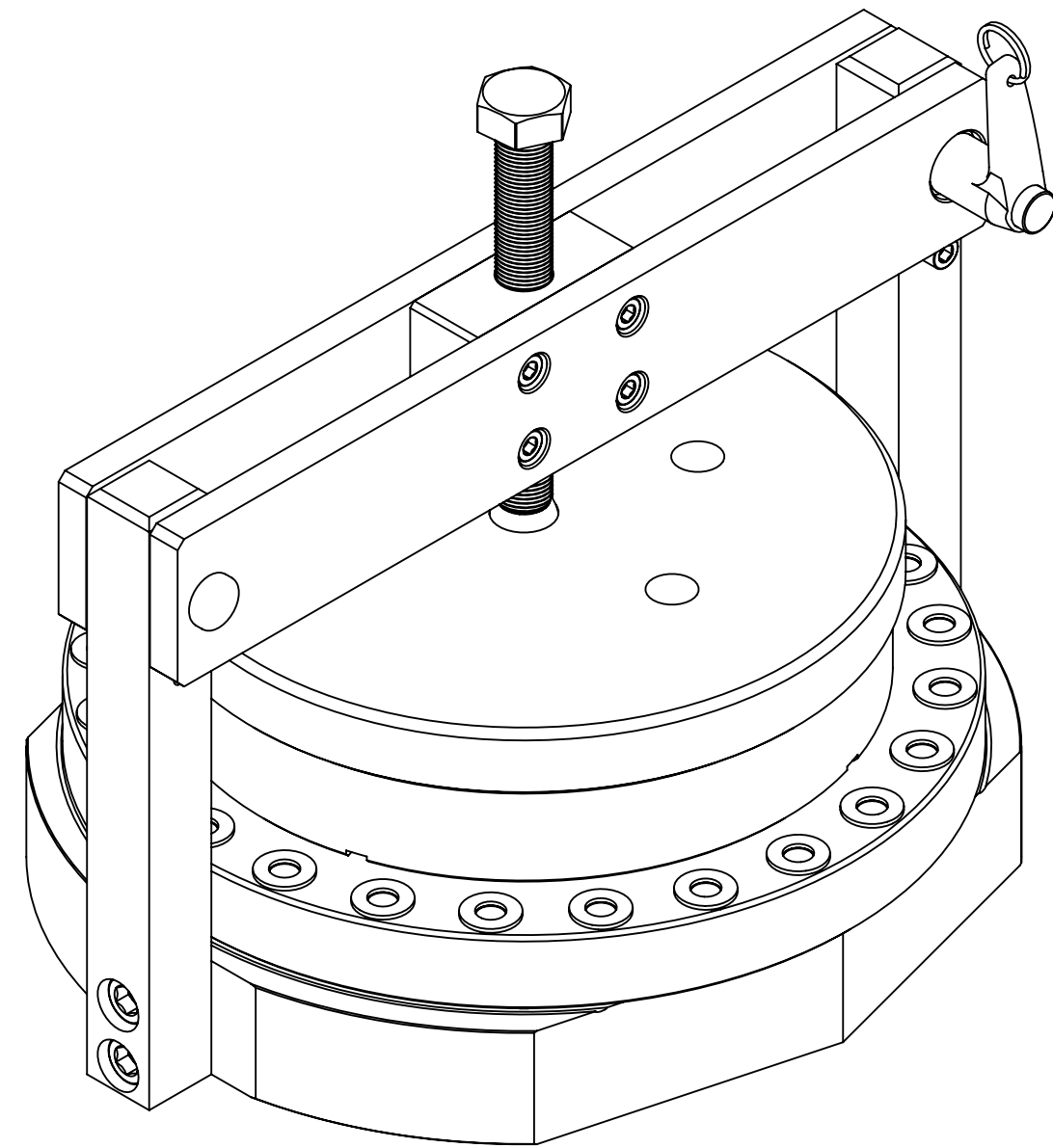
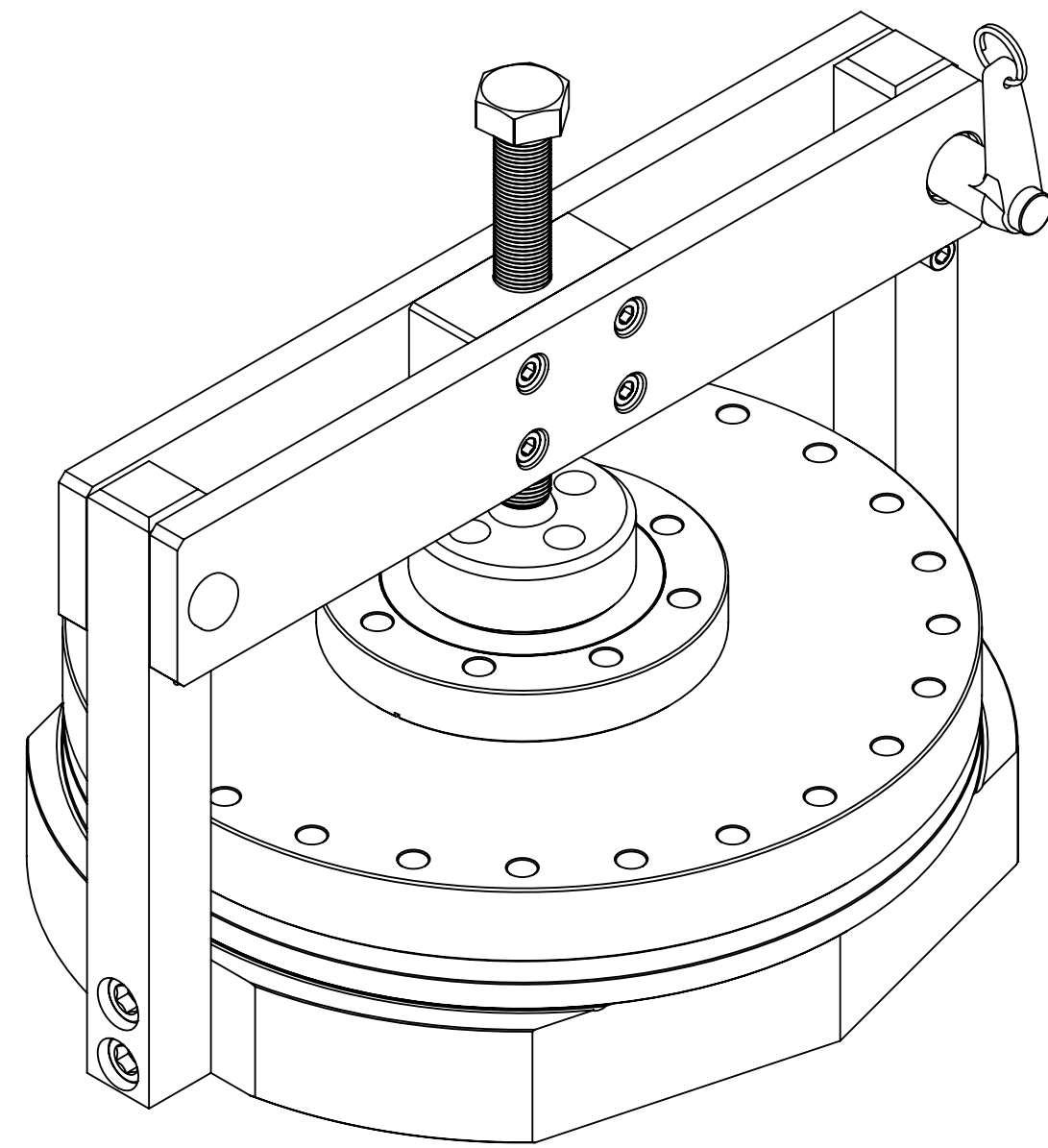
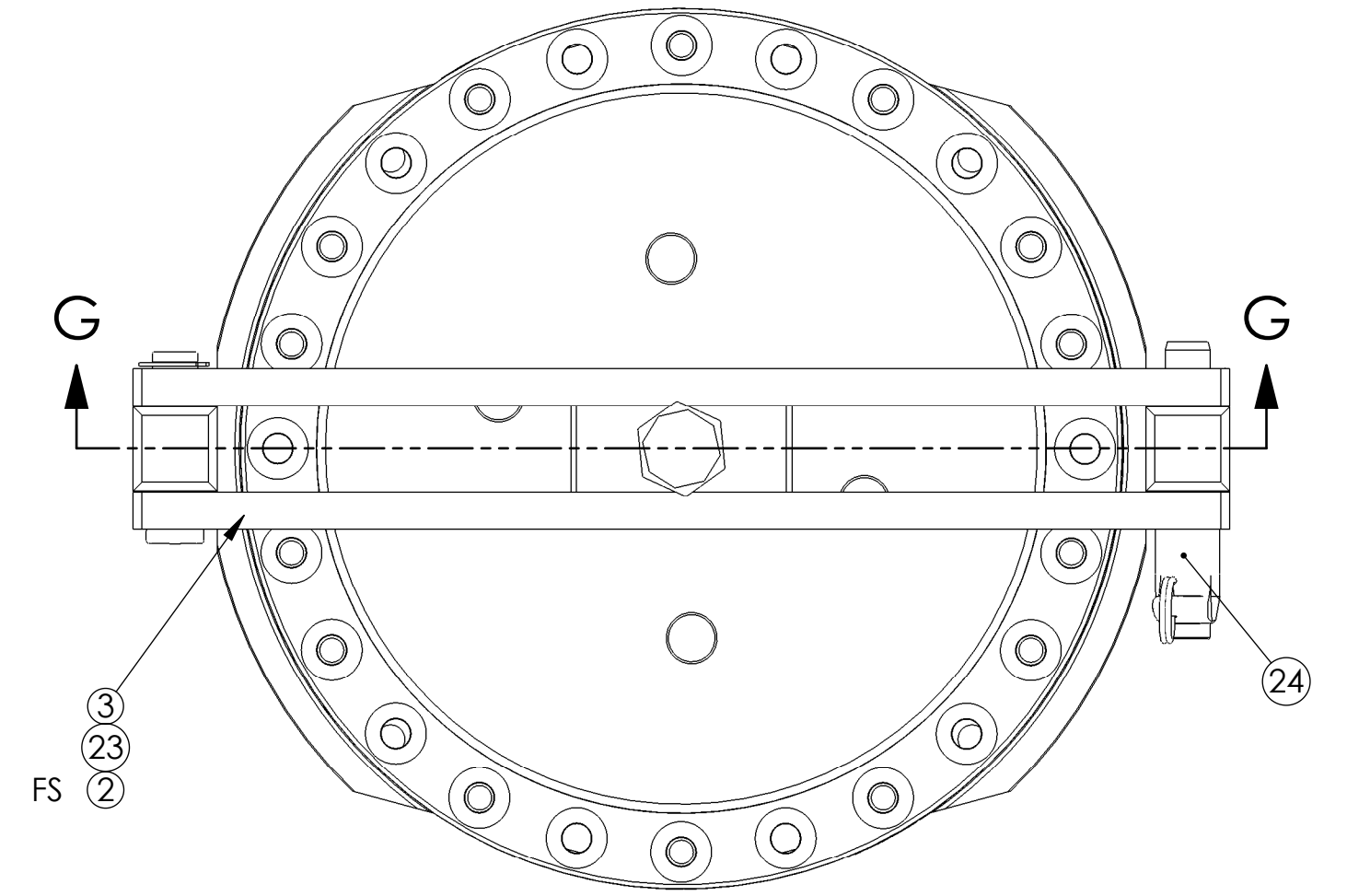
-4 CONFIG.



-5 CONFIG.
(D1101670)

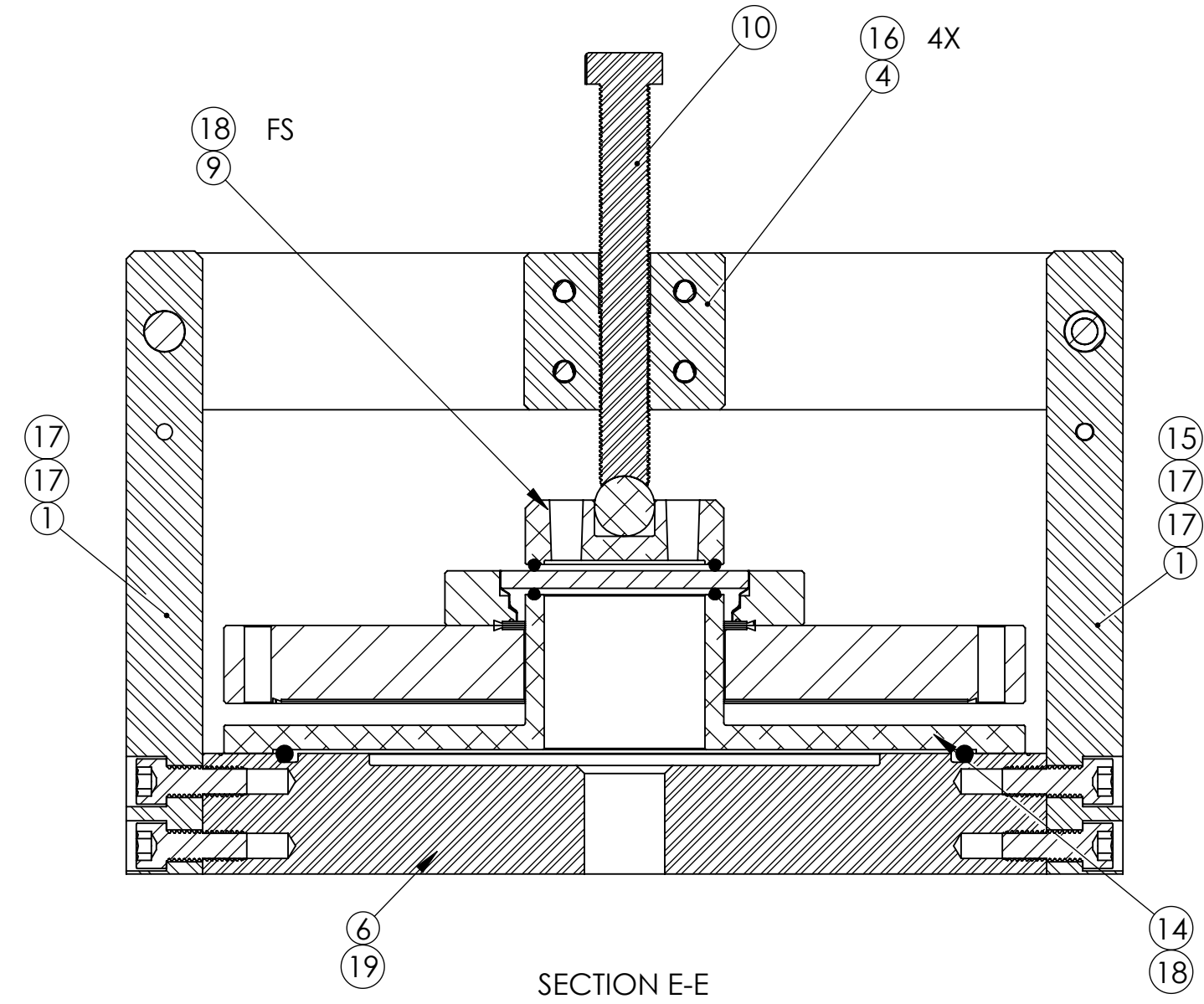


-5 CONFIG.
(D1101714)



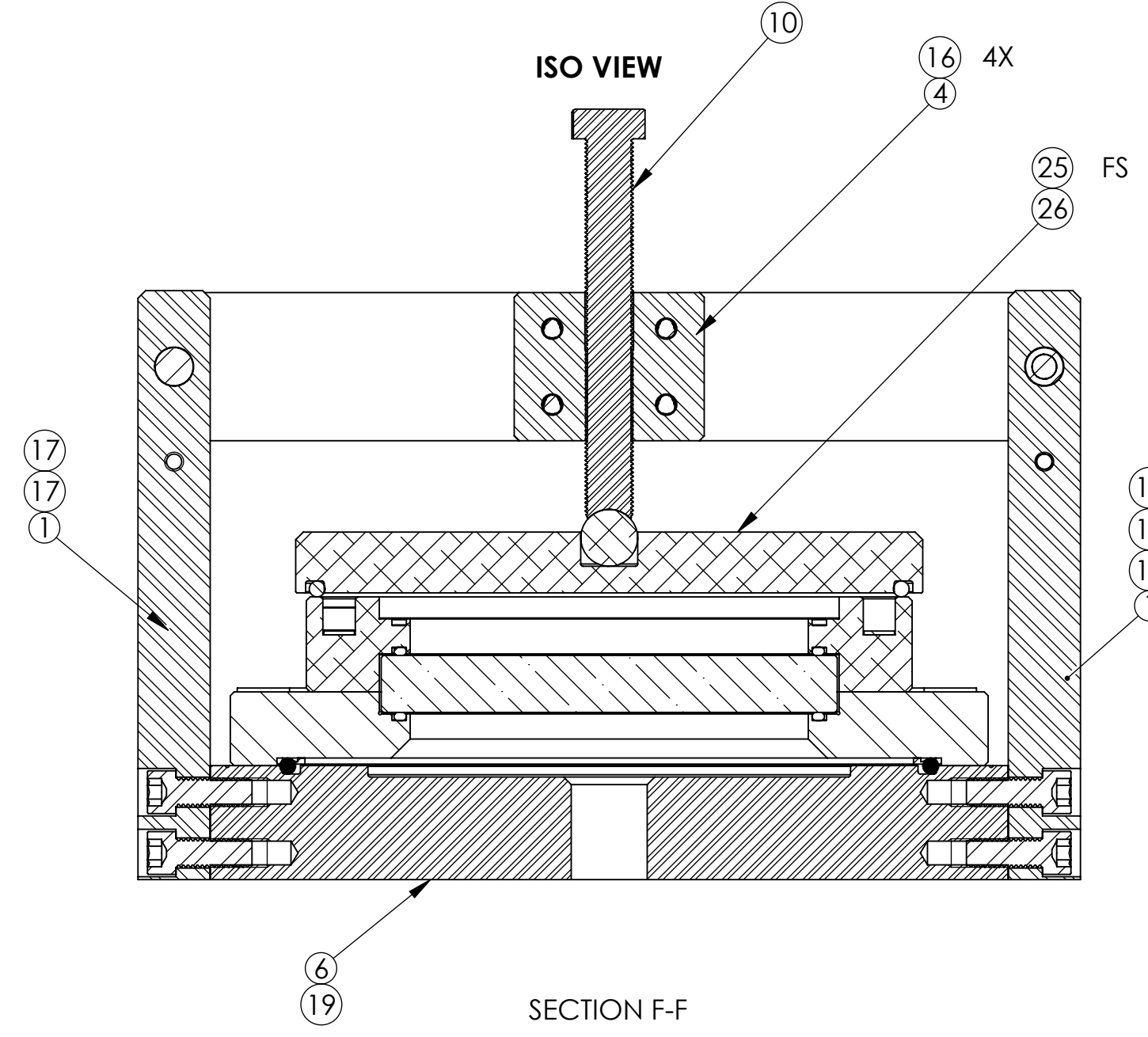
OR

ISO VIEW



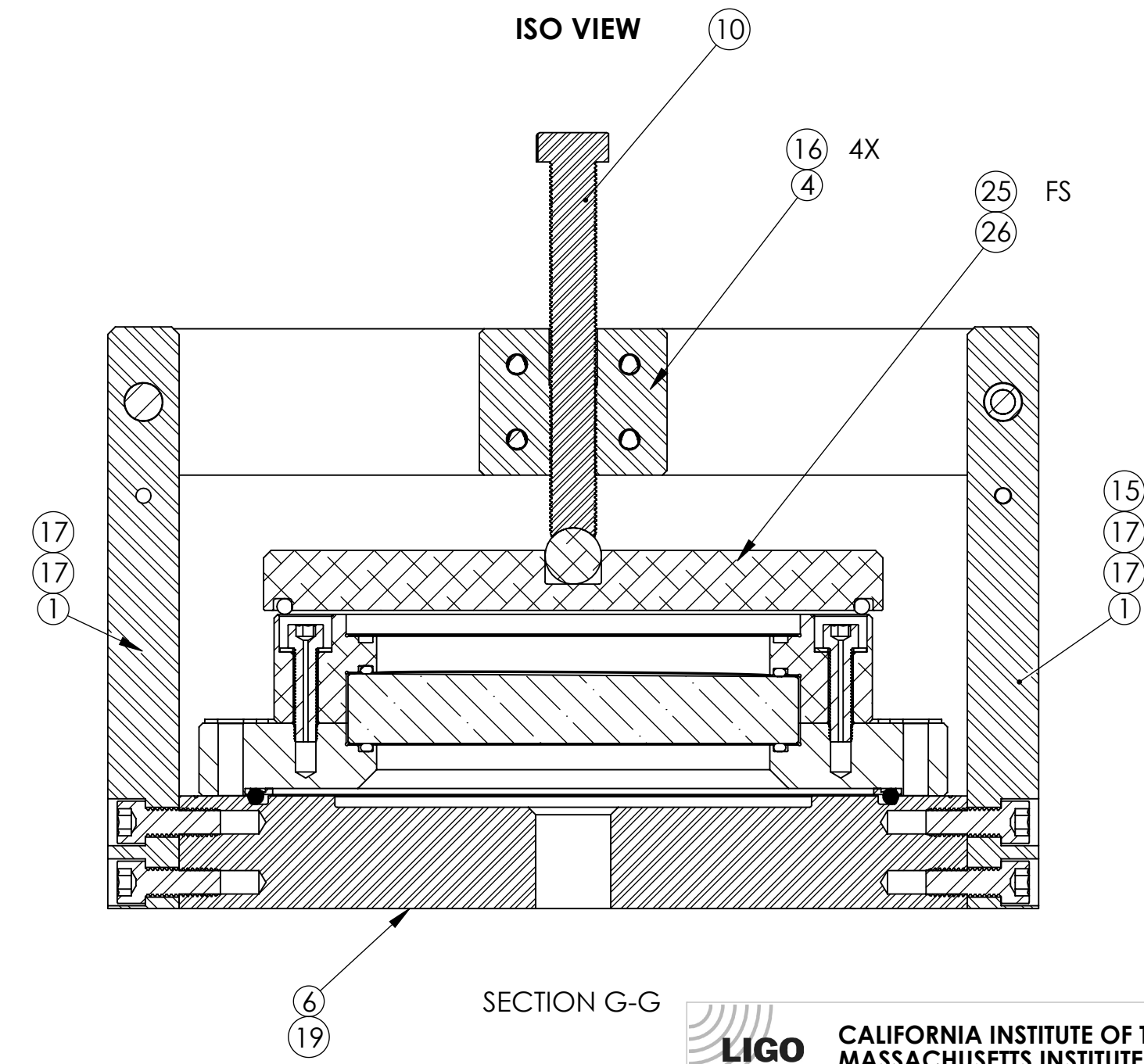
SECTION E-E

ISO VIEW



SECTION F-F

ISO VIEW



SECTION G-G

LIGO CALIFORNIA INSTITUTE OF TECHNOLOGY
MASSACHUSETTS INSTITUTE OF TECHNOLOGY

SIZE	DWG. NO.	REV.
D	D1101939	v8
SCALE: 1:2	PROJECTION:	SHEET 3 OF 3

D:\107957\BUBCO_7005_VIEWPORT LEAK TEST FIXTURE ASSY_PART FROM REV. 40111_DRAWING FROM REV. X023