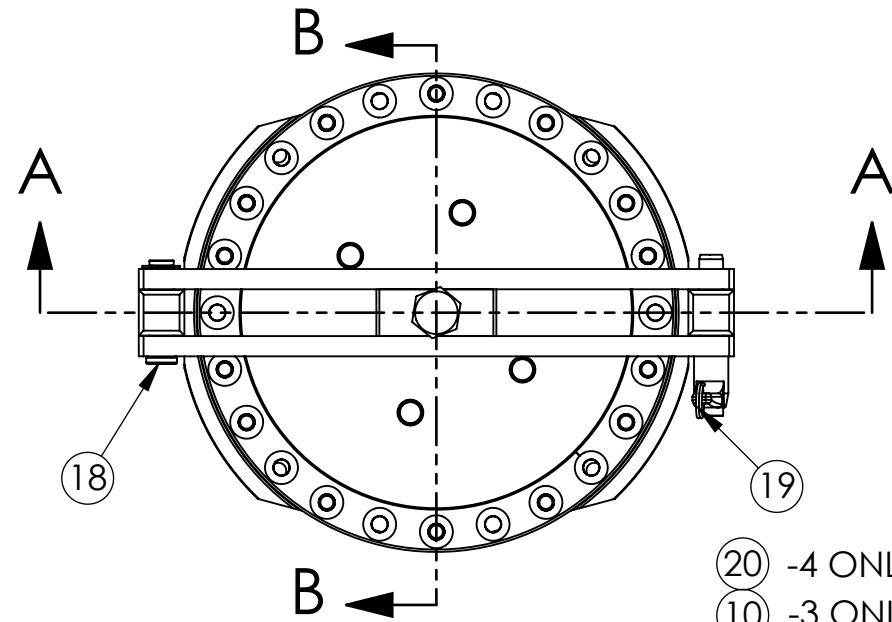
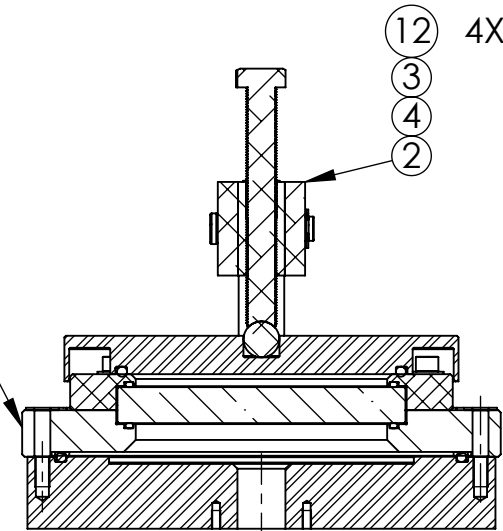


D1101939 ALIGO, AOS, VIEWPORT LEAK TEST FIXTURE ASSY, PART PDM REV: X-005, DRAWING PDM REV: X-008

REV.	DATE	DCN #	DRAWING TREE #
v1	11 OCT 2011	-	-
v3	11 NOV 2011	E1101060-x0	-
v4	01 DEC 2011	E1101137-x0	-

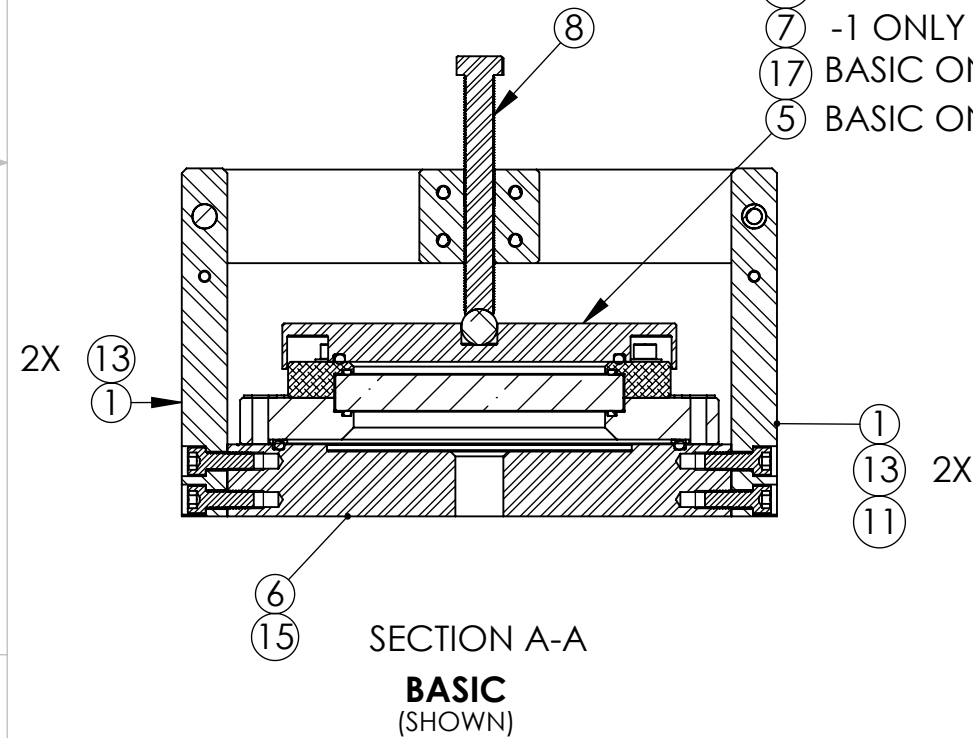


HQ V.P.
SHOWN FOR REF. ONLY
(NOT PART OF FINISHED ASSY.)



SECTION B-B
(ROTATED 90 DEGREES)

- 20 -4 ONLY
- 10 -3 ONLY
- 14 -2 ONLY
- 9 -2 ONLY
- 16 -1 ONLY
- 7 -1 ONLY
- 17 BASIC ONLY
- 5 BASIC ONLY



SECTION A-A
BASIC
(SHOWN)

APPLICATION	
PART NO.	'WHERE-USED'
D1101939	HQ V.P.
D1101939-1	COML V.P.
D1101939-2	MCD9722012
D1101939-3	CO2P
D1101939-4	MDC450004

ITEM NO.	PART NUMBER	DESCRIPTION	D1101939 QTY.	D1101939-1 QTY.	D1101939-2 QTY.	D1101939-3 QTY.	D1101939-4/QTY.
20	D1102284	ALIGO, AOS, VIEWPORT LEAK TEST FIXTURE, PROOF TEST CAP ASSY. (MDC450004)	-	-	-	-	1
19	90302A411 McMASTER-CARR	QUICK RLS PIN, .50 DIA X 1.50 LG.	1	1	1	1	1
18	92735A515 McMASTER-CARR	PIN, CLEVIS, .50 DIA. X 2.0 LG. W. RETAINING RING	1	1	1	1	1
17	PARKER NO.: 2-358	O-RING, 3/16 WIDE	1	-	-	-	-
16	PARKER NO.:2-367	O-RING, 3/16 WIDE	-	1	-	-	-
15	PARKER NO.:2-369	O-RING, 3/16 WIDE	1	1	1	1	1
14	PARKER NO.:2-267	O-RING, 1/8 WIDE	-	-	1	-	-
13	MS16995-81	SCREW, SHC, 3/8-16 X 1.0 LG.	4	4	4	4	4
12	MS16995-54	SCREW, SHC, 1/4-20 X 1.50 LG.	4	4	4	4	4
11	MS16995-48	SCREW, SHC, 1/4-20 X .50 LG.	1	1	1	1	1
10	D1102191	ALIGO, AOS, VIEWPORT LEAK TEST FIXTURE, PROOF TEST CAP ASSY. (CO2P VP)	-	-	-	1	-
9	D1101964	ALIGO, AOS, VIEWPORT LEAK TEST FIXTURE, PROOF TEST CAP ASSY. (MDC9722012)	-	-	1	-	-
8	D1101940	ALIGO, AOS, VIEWPORT TEST FIXTURE, SCREW, HH CAP	1	1	1	1	1
7	D1101938	ALIGO, AOS, VIEWPORT LEAK TEST FIXTURE, PROOF TEST CAP ASSY. (COML V.P)	-	1	-	-	-
6	D1101937	ALIGO, AOS, VIEWPORT LEAK TEST FIXTURE, BASE PLATE	1	1	1	1	1
5	D1101936	ALIGO, AOS, VIEWPORT LEAK TEST FIXTURE, PROOF TEST CAP ASSY. (HQ V.P)	1	-	-	-	-
4	D1101934	ALIGO, AOS, VIEWPORT LEAK TEST FIXTURE, THREADED LEAD SCREW MT. BLOCK	1	1	1	1	1
3	D1101933-1	ALIGO, AOS, VIEWPORT LEAK TEST FIXTURE, LEAD SCREW MT. BLOCK HORIZ. SUPPORT (C'BORE)	1	1	1	1	1
2	D1101933	ALIGO, AOS, VIEWPORT LEAK TEST FIXTURE, LEAD SCREW MT. BLOCK HORIZ. SUPPORT (THREADED)	1	1	1	1	1
1	D1101932	ALIGO, AOS, VIEWPORT LEAK TEST FIXTURE, HORIZ. SUPPORT MT. STUD	2	2	2	2	2

NOTES AND TOLERANCES: (UNLESS OTHERWISE SPECIFIED)

MATERIAL N/A FINISH N/A μinch

PARTS LIST

LIGO CALIFORNIA INSTITUTE OF TECHNOLOGY MASSACHUSETTS INSTITUTE OF TECHNOLOGY

SYSTEM ADVANCED LIGO SUB-SYSTEM AOS

PART NAME ALIGO, AOS, VIEWPORT LEAK TEST FIXTURE ASSY.

DESIGNER J.LEWIS 07 OCT 2011 SIZE DWG. NO. B D1101939

DRAFTER E.SANCHEZ 11 OCT 2011

CHECKER SEE DCC

APPROVAL SEE DCC

SCALE: 1:4 PROJECTION: SHEET 1 OF 1

REV. v4