

8

7

6

5

4

3

2

1

NOTES CONTINUED:

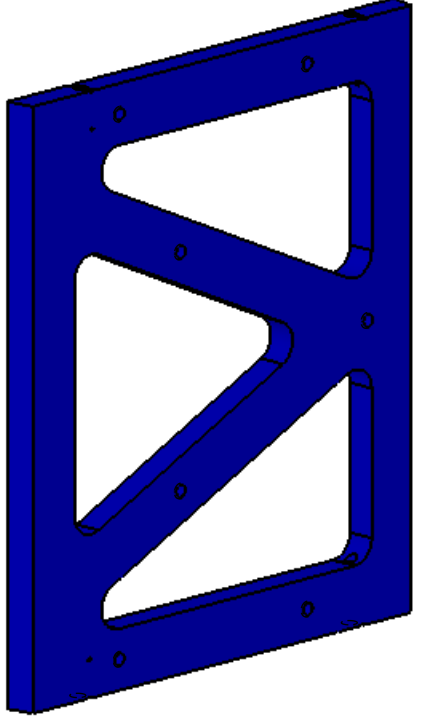
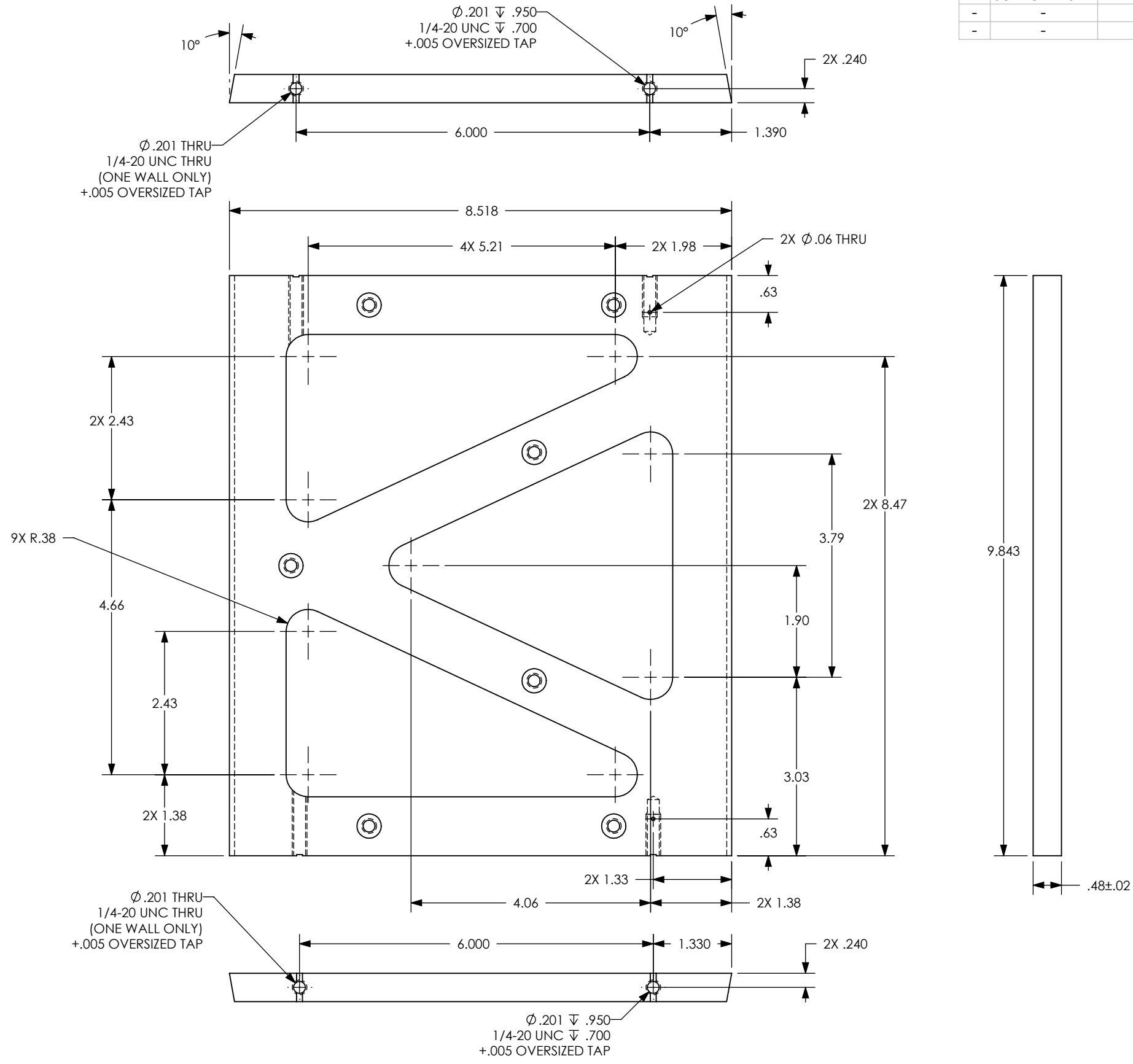
5. SCRIBE, ENGRAVE (A VIBRATORY TOOL MAY BE USED), LASER MARK OR MECHANICALLY STAMP (NO INKS OR DYES) DRAWING PART NUMBER, REVISION (AND VARIANT OR "TYPE" IF APPLICABLE) ON NOTED SURFACE OF PART FOLLOWED ON THE NEXT LINE WITH A THREE DIGIT SERIAL NUMBER. SERIAL NUMBERS START AT 001 FOR THE FIRST ARTICLE AND PROCEED CONSECUTIVELY. USE MINIMUM 0.12" HIGH CHARACTERS, UNLESS THE SIZE OF THE PART DICTATES SMALLER CHARACTERS. EXAMPLE: DXXXXXX-VY, TYPE-XX, S/N XXX

6. MACHINE ALL SURFACES TO REMOVE OXIDES AND MILL FINISH. USE OF ABRASIVE REMOVAL TECHNIQUES IS NOT ALLOWED. REFER TO LIGO-E0900364

7. ALL PARTS SHALL BE MANUFACTURED IN ACCORDANCE WITH LIGO SPECIFICATION E0900364.

8. APPROXIMATE PART WEIGHT: 2.11 LB

REV.	DATE	DCN #	DRAWING TREE #
v2	08 NOV 2011	E1000865	-
-	-	-	-
-	-	-	-



**NOTES AND TOLERANCES: (UNLESS OTHERWISE SPECIFIED)**

DIMENSIONS ARE IN INCHES

TOLERANCES:  
 .XX ± .01  
 .XXX ± .005  
 ANGULAR ± .5°

1. INTERPRET DRAWING PER ASME Y14.5-1994.  
 2. REMOVE ALL SHARP EDGES, .005-.015, FOR MACHINED PARTS. ROUND ALL EDGES APPROXIMATELY R.02 FOR SHEET METAL PARTS.  
 3. DO NOT SCALE FROM DRAWING.  
 4. ALL MACHINING FLUIDS MUST BE FULLY SYNTHETIC, FULLY WATER SOLUBLE AND FREE OF SULFUR, SILICONE, AND CHLORINE.

**MATERIAL** 6061-T6 Al      **FINISH** 63 μinch

**LIGO** CALIFORNIA INSTITUTE OF TECHNOLOGY  
 MASSACHUSETTS INSTITUTE OF TECHNOLOGY

**SYSTEM** ADVANCED LIGO      **SUB-SYSTEM** LIGO

**NEXT ASSY** D1003300

**PART NAME** SUPPORT, SIDE, SR2 SCRAPER BAFFLE

<b>DESIGNER</b>	MRUIZ	8 NOV 2012	<b>SIZE</b>	<b>DWG. NO.</b>	<b>REV.</b>
<b>DRAFTER</b>	M.RUIZ	08 NOV 2011	<b>B</b>	<b>D1101903</b>	<b>v2</b>
<b>CHECKER</b>	M. SMITH	17 MAY 2012	<b>SCALE:</b> 1:2	<b>PROJECTION:</b>	<b>SHEET 1 OF 2</b>
<b>APPROVAL</b>	M. SMITH	17 MAY 2012			

D1101903\_AdlIGO AOS, Support, Left, SR2 SCRAPER BAFFLE, PART PDM REV: X-016, DRAWING PDM REV: X-013

8

7

6

5

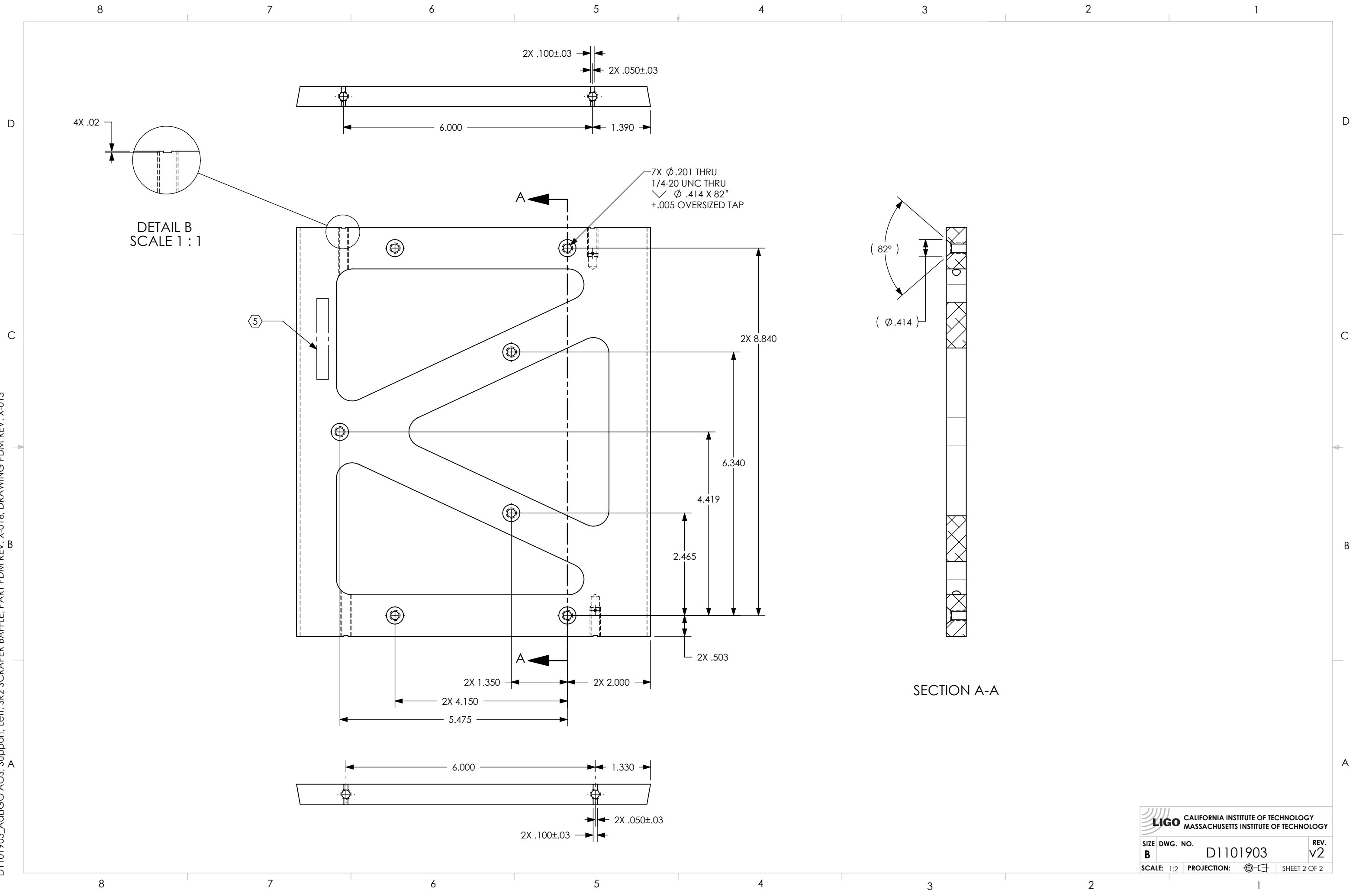
4


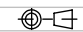
3

2

1

D1101903\_AoLIGO AOS, Support, Left, SR2 SCRAPER BAFFLE, PART PDM REV: X-016, DRAWING PDM REV: X-013



 <b>CALIFORNIA INSTITUTE OF TECHNOLOGY</b> <b>MASSACHUSETTS INSTITUTE OF TECHNOLOGY</b>		
SIZE <b>B</b>	DWG. NO. <b>D1101903</b>	REV. <b>v2</b>
SCALE: 1:2	PROJECTION: 	SHEET 2 OF 2